

U.S. TAPE®

WORLD CLASS TOOLS SINCE 1876

Stringliner®

DuraWheel™
COMMERCIAL DUTY

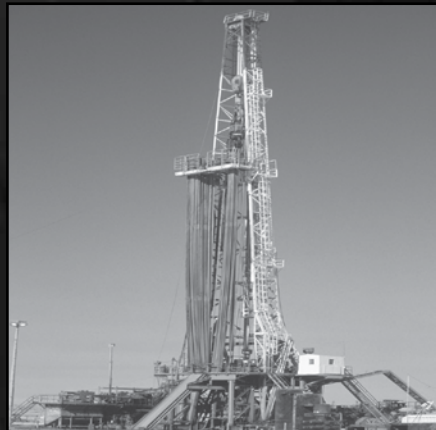
DuraMark

CENTER POINT®

PROTAPE®



2018



ABOUT U.S.TAPE COMPANY



U.S. Tape is a company that looks back proudly on its long history as it looks forward to its future growth. Founded by surveyor Justus Roe in 1876, U.S. Tape has been an innovator in the invention and manufacture of steel tape measures and the printing press designs that continue to serve as industry benchmarks. U.S. Tape continues to manufacture our Spencer forestry logger tapes, most oil tank gauging tapes, and a line of short and long measuring tapes here in our Pennsburg, PA facility. We also sell other quality tape measures and specialty tools for the professional user.

We are proud to feature such brands as DuraWheel-an industry leader in the design and manufacture of professional grade measuring wheels; DuraMark-a full line of quality measuring chalk, and chalk lines and reels; ProTape construction grade measuring tapes; CenterPoint® patented center finding measuring products; and Rhino™ fiberglass folding rulers.

The acquisition of the Stringliner line of products means we can now offer a one-stop shop for distributors with quality products such as construction/mason line and line reels, barricade tape and dispensers, and other items for construction and masonry professionals.

U.S. Tape is well known for our Private Label Program which allows you to custom label a wide variety of our short tape measures for your business. We offer full color/full size labels, low minimum order, volume discounts, and no additional label charges or set up fees. Getting your company name out there is fast, easy and cost effective.

As a tape measure supplier to the U.S. Government Supply Administration (GSA), our products are built for accuracy and durability. Our oil tank gauging tapes exceed the standards set by the American Society of Testing and Materials (ASTM) and the American Petroleum Institute (API).

DEDICATION TO QUALITY AND CUSTOMER SERVICE

The core of our reputation-based on over 140 years of experience as an innovative manufacturer of measuring tools-is dedication to quality, value, and meeting the needs of our customers.


At U.S. Tape Company we understand that our lasting success starts and ends with our customer.

TABLE OF CONTENTS

CHALK

Chalk Reels, Lines	1	
Marking Chalk	2	


MASONS LINE

Mason/Construction Line	3	
Pro Reels	4	
LevelWiz, Accessories	5	
Original Reels	6	


MEASURING WHEELS

DW-500, DW-1000, Carry Cases	7	
DW-PRO, DIGI-PRO	8	

OIL GAUGE

General Information, Plated Tapes and Refills,	9	
Double Duty, Black Etched, Etched Stainless Steel Tapes and Refills	10	
Derrick and Strapping Tapes and Refills, Plumb Bobs, Line Wiper, Accessories	11	

SPECIALTY

Bench Tapes	12	
Folding Rulers, Stainless Steel Center-Finding Rulers	13	
TapeWiz Caution Tape and Reels, CordWiz Extension Cord Holders	14	
Dead Blow Hammers, Magtite Magnetic Tape Holster, Pencil Pal	15	

TAPE MEASURES

Long Tapes: Auto Rewind Tapes and Refills	16
Open Reel Tapes: Nylon Clad Steel Blade, Fiberglass Blade	17
Black Vinyl Covered Steel Case Tapes, Contractor Plastic Case Tapes, Protape Construction Grade Tapes	18
Short Tapes: CenterPoint Items	19
Made in US Classic Series, and Diameter Pro	20
Protape XLT Series, Protape CB Series, Protape CR Series	21
Protape XR Series	22

PRIVATE LABEL TAPE MEASURE PROGRAM

23



Warranty, Terms and Conditions

24



DURAMARK CHALK REELS and LINES

MagnumPro

- Compact design with comfort rubber grip handle
- Holds over 10 oz. of marking chalk
- Easy to open slide for quick and simple fill
- Steel crank assembly; fast rewind capability
- 165' braided cotton string with large round ring for easy pull and set

Lil' Magnum

- Compact design holds 7 oz. of marking chalk
- Steel crank assembly; fast rewind capability
- 100' braided cotton line with large round ring for easy pull and set

Aluminum or Plastic Case Fast Rewind Reels

- 3:1 gear ratio
- Rubber plug for easy fill
- 100' line

Stoplevel Combo

- Comfort rubber grip handle and compact design
- Fast rewind
- 100' braided poly/cotton line
Packaged with 8 oz. blue chalk

Aluminum Case Reel

- Durable, compact metal case
- Easy to carry and use
- 100' twisted cotton line

Replacement Line



Item #	Description	Inner Pack	Master Pack
75300	MagnumPro 165' reel; holds over 10 oz. of chalk	1	12
75302	MagnumPro Contractor Pack: MagnumPro with (3) 5 lb. Blue chalks	1	1
75303	MagnumPro Contractor Pack: MagnumPro with (3) 5 lb. Red chalks	1	1
75200	Lil' Magnum 100' reel; holds 7 oz. of chalk	1	12
75400	Aluminum chalk box 100'; Orange case with rubber grip; braided line	12	12
75450	ABS plastic chalk box 100'; Orange case; twisted line	12	12
75508	Stoplevel Pack: 100' Stoplevel reel with 8 oz. Blue chalk	6	6
75100	Aluminum chalk box 100'; Silver case, twisted line	20	20
77100	165' Refill line for MagnumPro; 2.5mm braided cotton line on reel with crank and ring	1	1
77300	100' Refill line for Lil' Magnum; 2mm braided cotton line on reel with crank and ring	1	1
77400	100' Refill line; 1.5mm braided poly/cotton line	5	5
77500	100' Refill line; 1mm twisted cotton line	5	5

DURAMARK CHALK

- Premium chalk in brilliant colors
- Formulated to give you a precise, strong, lasting line
- Standard colors for every job including highly visible fluorescent orange
- Easy flow



Item #	Size	Description	Permanence Classification	Inner Pack	Master Pack
76108	8 oz. bottle	Blue chalk	Semi-Permanent	6	6
76208	8 oz. bottle	Red chalk	Semi-Permanent	6	6
76308	8 oz. bottle	Yellow chalk	Standard-High Vis.	6	6
76408	8 oz. bottle	White chalk	Standard	6	6
76508	8 oz. bottle	Black chalk	Semi-Permanent	6	6
76608	8 oz. bottle	Fluorescent Orange chalk	Standard-High Vis.	6	6
76132	32 oz. bottle	Blue chalk	Semi-Permanent	6	6
76232	32 oz. bottle	Red chalk	Semi-Permanent	6	6
76332	32 oz. bottle	Yellow chalk	Standard-High Vis.	6	6
76432	32 oz. bottle	White chalk	Standard	6	6
76532	32 oz. bottle	Black chalk	Semi-Permanent	6	6
76632	32 oz. bottle	Fluorescent Orange chalk	Standard-High Vis.	6	6
76180	5 lb. bottle	Blue chalk	Semi-Permanent	1	6
76280	5 lb. bottle	Red chalk	Semi-Permanent	1	6
76380	5 lb. bottle	Yellow chalk	Standard-High Vis.	1	6
76480	5 lb. bottle	White chalk	Standard	1	6
76580	5 lb. bottle	Black chalk	Semi-Permanent	1	6
76680	5 lb. bottle	Fluorescent Orange chalk	Standard-High Vis.	1	6

STRINGLINER MASON LINE

- **Quality #18 Nylon Line** (tensile strength 165 lbs.)
- **Bright solid or mixed colors**
- **Twisted or Braided**
- **#27 Nylon Line** (tensile strength 216 lbs.)
- **Cotton line also available**
- ***Black/White, Black/Mixed Color, and #27 lines are Bonded** (coated for added durability, UV, water, and wear resistance)



Item # Length Description

1/8 lb. #18 Nylon Line

35000	135 Ft.	Twisted; Gold
35003	135 Ft.	Twisted; White
35006	135 Ft.	Twisted; Fluorescent Orange
35009	135 Ft.	Twisted; Fluorescent Pink
35012	135 Ft.	Twisted; Fluorescent Yellow
35015	135 Ft.	Twisted; Fluorescent Green
35050	125 Ft.	Braided; Yellow
35053	125 Ft.	Braided; White
35056	125 Ft.	Braided; Green
35059	125 Ft.	Braided; Fluorescent Orange
35062	125 Ft.	Braided; Fluorescent Pink
35065	125 Ft.	Braided; Fluorescent Yellow
35068	125 Ft.	Braided; Fluorescent Green
35090	125 Ft.	Braided; Black/White*

1/2 lb. #18 Nylon Line

35400	540 Ft.	Twisted; Gold
35403	540 Ft.	Twisted; White
35406	540 Ft.	Twisted; Fluorescent Orange
35409	540 Ft.	Twisted; Fluorescent Pink
35412	540 Ft.	Twisted; Fluorescent Yellow
35415	540 Ft.	Twisted; Fluorescent Green
35450	500 Ft.	Braided; Yellow
35453	500 Ft.	Braided; White
35456	500 Ft.	Braided; Green
35459	500 Ft.	Braided; Fluorescent Orange
35462	500 Ft.	Braided; Fluorescent Pink
35465	500 Ft.	Braided; Fluorescent Yellow
35468	500 Ft.	Braided; Fluorescent Green
35490	500 Ft.	Braided; Black/White*
35491	500 Ft.	Braided; Black/Orange*
35492	500 Ft.	Braided; Black/Yellow*
35494	500 Ft.	Braided; Black/Fl.Yellow*

1/2 lb. #27 Bonded Nylon Line

35495	320 Ft.	Braided; Black/Yellow*
35496	320 Ft.	Braided; Black/Orange*

1/2 lb. Cotton Line

12493	540 Ft.	Twisted; White
-------	---------	----------------

Item # Length Description

1/4 lb. #18 Nylon Line

35100	270 Ft.	Twisted; Gold
35103	270 Ft.	Twisted; White
35106	270 Ft.	Twisted; Fluorescent Orange
35109	270 Ft.	Twisted; Fluorescent Pink
35112	270 Ft..	Twisted; Fluorescent Yellow
35115	270 Ft.	Twisted; Fluorescent Green
35150	250 Ft.	Braided; Yellow
35153	250 Ft.	Braided; White
35156	250 Ft.	Braided; Green
35159	250 Ft.	Braided; Fluorescent Orange
35162	250 Ft.	Braided; Fluorescent Pink
35165	250 Ft.	Braided; Fluorescent Yellow
35168	250 Ft.	Braided; Fluorescent Green
35190	250 Ft.	Braided; Black/White*

1 lb. #18 Nylon Line

35700	1080 Ft.	Twisted; Gold
35703	1080 Ft.	Twisted; White
35706	1080 Ft.	Twisted; Fluorescent Orange
35709	1080 Ft.	Twisted; Fluorescent Pink
35712	1080 Ft.	Twisted; Fluorescent Yellow
35715	1080 Ft.	Twisted; Fluorescent Green
35750	1000 Ft.	Braided; Yellow
35753	1000 Ft.	Braided; White
35756	1000 Ft.	Braided; Green
35759	1000 Ft.	Braided; Fluorescent Orange
35762	1000 Ft.	Braided; Fluorescent Pink
35765	1000 Ft.	Braided; Fluorescent Yellow
35768	1000 Ft.	Braided; Fluorescent Green
35790	1000 Ft.	Braided; Black/White*
35791	1000 Ft.	Braided; Black/Orange*
35792	1000 Ft.	Braided; Black/Yellow*
35794	1000 Ft.	Braided; Black/Fl.Yellow*

1 lb. #27 Bonded Nylon Line

35795	640 Ft.	Braided; Black/Yellow*
35796	640 Ft.	Braided; Black/Orange*
35797	640 Ft.	Braided; Black/Fl.Yellow*

1 lb. Cotton Line

12793	1080 Ft.	Twisted; White
-------	----------	----------------

STRINGLINER PRO REELS

- Patented line reel made of durable polyethylene

US Pat. No.: 7,121,498 Canadian Pat. No.: 2,198,678

- Various line lengths and colors
- Fits all 1" line cores from 4"-6" long
- Line secures in convenient notch
- Reload rolls of line easily
- Rewind hand crank
(or automatic rewind using
power screwdriver in slot in
bottom of handle)

*Black/White and Black/Mixed Color
lines are Bonded (coated for
added durability, UV, water,
and wear resistance)



Item # Length Description

1/8 lb. #18 Nylon Line

25000	135 Ft.	Twisted; Gold
25003	135 Ft.	Twisted; White
25006	135 Ft.	Twisted; Fluorescent Orange
25009	135 Ft.	Twisted; Fluorescent Pink
25012	135 Ft.	Twisted; Fluorescent Yellow
25015	135 Ft.	Twisted; Fluorescent Green
25050	125 Ft.	Braided; Yellow
25053	125 Ft.	Braided; White
25056	125 Ft.	Braided; Green
25059	125 Ft.	Braided; Fluorescent Orange
25062	125 Ft.	Braided; Fluorescent Pink
25065	125 Ft.	Braided; Fluorescent Yellow
25068	125 Ft.	Braided; Fluorescent Green
25090	125 Ft.	Braided; Black/White*

1/2 lb. #18 Nylon Line

25400	540 Ft.	Twisted; Gold
25403	540 Ft.	Twisted; White
25406	540 Ft.	Twisted; Fluorescent Orange
25409	540 Ft.	Twisted; Fluorescent Pink
25412	540 Ft.	Twisted; Fluorescent Yellow
25415	540 Ft.	Twisted; Fluorescent Green
25450	500 Ft.	Braided; Yellow
25453	500 Ft.	Braided; White
25456	500 Ft.	Braided; Green
25459	500 Ft.	Braided; Fluorescent Orange
25462	500 Ft.	Braided; Fluorescent Pink
25465	500 Ft.	Braided; Fluorescent Yellow
25468	500 Ft.	Braided; Fluorescent Green
25490	500 Ft.	Braided; Black/White*
25491	500 Ft.	Braided; Black/Orange*
25492	500 Ft.	Braided; Black/Yellow*
25494	500 Ft.	Braided; Black/Fl. Yellow*

Item # Length Description

1/4 lb. #18 Nylon Line

25100	270 Ft.	Twisted; Gold
25103	270 Ft.	Twisted; White
25106	270 Ft.	Twisted; Fluorescent Orange
25109	270 Ft.	Twisted; Fluorescent Pink
25112	270 Ft.	Twisted; Fluorescent Yellow
25115	270 Ft.	Twisted; Fluorescent Green
25150	250 Ft.	Braided; Yellow
25153	250 Ft.	Braided; White
25156	250 Ft.	Braided; Green
25159	250 Ft.	Braided; Fluorescent Orange
25162	250 Ft.	Braided; Fluorescent Pink
25165	250 Ft.	Braided; Fluorescent Yellow
25168	250 Ft.	Braided; Fluorescent Green
25190	250 Ft.	Braided; Black/White*

1 lb. #18 Nylon Line

25700	1080 Ft.	Twisted; Gold
25703	1080 Ft.	Twisted; White
25706	1080 Ft.	Twisted; Fluorescent Orange
25709	1080 Ft.	Twisted; Fluorescent Pink
25712	1080 Ft.	Twisted; Fluorescent Yellow
25715	1080 Ft.	Twisted; Fluorescent Green
25750	1000 Ft.	Braided; Yellow
25753	1000 Ft.	Braided; White
25756	1000 Ft.	Braided; Green
25759	1000 Ft.	Braided; Fluorescent Orange
25762	1000 Ft.	Braided; Fluorescent Pink
25765	1000 Ft.	Braided; Fluorescent Yellow
25768	1000 Ft.	Braided; Fluorescent Green
25790	1000 Ft.	Braided; Black/White*
25791	1000 Ft.	Braided; Black/Orange*
25792	1000 Ft.	Braided; Black/Yellow*
25794	1000 Ft.	Braided; Black/Fl. Yellow*

STRINGLINER LEVEL WIZ

- Stringliner Pro reloadable line reel with detachable precision line level
- Level stores right on the handle
- #18 Nylon Line
- Level available separately



Item #	Length	Description
--------	--------	-------------

1/4 lb. #18 Nylon Line

24106	270 Ft.	Twisted; Fluorescent Orange
24162	250 Ft.	Braided; Fluorescent Pink

1/2 lb. #18 Nylon Line

24406	540 Ft.	Twisted; Fluorescent Orange
24462	500 Ft.	Braided; Fluorescent Pink

Precision Line Level

24927	Level (2 pack)	
-------	----------------	--



MASONRY ACCESSORIES



Line Bone



Line Block



Ground Stakes

Item #	Description
--------	-------------

25940	Line Bone; Set a level course for hollow block (2 pack)
25943	4" Wood Line Block; Set a level course for walls/corners (2 pack)
19941CD	11" Ground Stake (24 ct. case display)
19946CD	16" Ground Stake (12 ct. case display)

STRINGLINER ORIGINAL REELS

- Line reel handle made of durable polyethylene
- Quality #18 Twisted or Braided nylon line
- Large selection of colors
- Line secures in convenient notch
- *Black/White line is Bonded (coated for added durability, UV, water, and wear resistance)



Item # Length Description

Model 100 #18 Twisted Nylon Line

11100	100 Ft.	Twisted; Gold
11103	100 Ft.	Twisted; White
11106	100 Ft.	Twisted; Fluorescent Orange
11109	100 Ft.	Twisted; Fluorescent Pink
11112	100 Ft.	Twisted; Fluorescent Yellow
11115	100 Ft.	Twisted; Fluorescent Green

Model 110 #18 Twisted Nylon Line

11400	270 Ft.	Twisted; Gold
11403	270 Ft.	Twisted; White
11406	270 Ft.	Twisted; Fluorescent Orange
11409	270 Ft.	Twisted; Fluorescent Pink
11412	270 Ft.	Twisted; Fluorescent Yellow
11415	270 Ft.	Twisted; Fluorescent Green

Model 500 #18 Twisted Nylon Line

11700	500 Ft.	Twisted; Gold
11703	500 Ft.	Twisted; White
11706	500 Ft.	Twisted; Fluorescent Orange
11709	500 Ft.	Twisted; Fluorescent Pink
11712	500 Ft.	Twisted; Fluorescent Yellow
11715	500 Ft.	Twisted; Fluorescent Green

Item # Length Description

Model 100 #18 Braided Nylon Line

11150	100 Ft.	Braided; Yellow
11153	100 Ft.	Braided; White
11156	100 Ft.	Braided; Green
11159	100 Ft.	Braided; Fluorescent Orange
11162	100 Ft.	Braided; Fluorescent Pink
11165	100 Ft.	Braided; Fluorescent Yellow
11168	100 Ft.	Braided; Fluorescent Green
11190	100 Ft.	Braided; Black/White*

Model 110 #18 Braided Nylon Line

11450	250 Ft.	Braided; Yellow
11453	250 Ft.	Braided; White
11456	250 Ft.	Braided; Green
11459	250 Ft.	Braided; Fluorescent Orange
11462	250 Ft.	Braided; Fluorescent Pink
11465	250 Ft.	Braided; Fluorescent Yellow
11468	250 Ft.	Braided; Fluorescent Green
11490	250 Ft.	Braided; Black/White*

Model 500 #18 Braided Nylon Line

11750	500 Ft.	Braided; Yellow
11753	500 Ft.	Braided; White
11756	500 Ft.	Braided; Green
11759	500 Ft.	Braided; Fluorescent Orange
11762	500 Ft.	Braided; Fluorescent Pink
11765	500 Ft.	Braided; Fluorescent Yellow
11768	500 Ft.	Braided; Fluorescent Green
11790	500 Ft.	Braided; Black/White*

DURAWHEEL COMMERCIAL DUTY MEASURING WHEELS

DW-500 6" diameter wheel

Normally used for shorter distances and smoother surfaces.

- Tri-fold handle

DW-1000 12.5" diameter wheel

Ideal for long distances over rough surfaces.

- Strong oval tube design
- Wide stance folding kick stand
- Heavy duty chassis
- Debris scraper



- Measures to 9999 feet
- Pistol grip handle
- Balanced in-line design
- Sealed roller bearings
- Belt driven counter for long life and smooth operation
- 25% Larger counter numbers than previous models
- Hi-traction tire
- Folds for easy carrying and storage



DW-500 and DW-1000 WHEELS, and DW CASES

Item #	Size	Description	Inner Pack	Master Pack
68910	12.5" dia. wheel	DW-1000 measuring wheel; Feet/Tenths	1	5
68912	12.5" dia. wheel	DW-1000 measuring wheel; Meters/Centimeters	1	5
68920	6" dia. wheel	DW-500 measuring wheel; Feet/Tenths	1	10
68922	6" dia. wheel	DW-500 measuring wheel; Meters/Centimeters	1	10
68930		Carrying Case for DW-PRO and DW-1000	1	N/A
68932		Carrying Case for DW-500	1	N/A

Designed and Built for Professionals

DW-PRO 12.5" diameter wheel

Has all the features of the DW-1000 and more:

- Trigger operated brake
- Grip mounted counter-reset control along with reset button near counter

DIGI-PRO 12.5" diameter wheel

Digital counter converts distances to various scales.

- Reset button on counter can scroll through units of measure
- Trigger operated brake
- Comes complete with carrying case (Uses 2 AA batteries, not included)



DW-PRO and DIGI-PRO PREMIUM WHEELS

Item #	Size	Description	Inner Pack	Master Pack
68900	12.5" dia. wheel	DW-PRO measuring wheel WITH case; Feet/Tenths	1	5
68901	12.5" dia. wheel	DW-PRO measuring wheel NO case; Feet/Tenths	1	5
68902	12.5" dia. wheel	DW-PRO measuring wheel WITH case; Meters/Centimeters	1	5
68903	12.5" dia. wheel	DW-PRO measuring wheel NO case; Meters/Centimeters	1	5
68940	12.5" dia. wheel	DIGI-PRO Digital measuring wheel WITH case	1	5

OIL GAUGING TAPES, DERRICK TAPES, REFILLS

Wide variety of Gauging Tapes:

- Plated, Double Duty, and Derrick Tapes (Made in USA)
- Black Etched and Etched Stainless

Meets or exceeds American Petroleum Institute (API) Standard 2545 and American Society for Testing and Materials (ASTM) Standard D1085

NIST Certification available

Oil Gauge Frames:

- Strong and durable
- Corrosion resistant
- Safety yellow handle with grounding wire (oil gauge)
- Longer crank arm to speed retraction

(Plated and Double Duty 75' and shorter complete tapes are housed in small frame.

All Black Etched and Stainless complete tapes are housed in small frame.)

Blades:

- New coating on blades helps reduce the wear caused by harsh chemicals
- Variety of blade materials, graduations, and lengths
- Refill blades are compatible with competitors frames
- 3 rivet end assembly for dependability and durability



PLATED for Dark Liquids; Corrosion Resistant

Item # Size/Description

Innage Complete

58811	1/2" x 18'; Ft/In/8ths
58813	1/2" x 25'; Ft/In/8ths
58815	1/2" x 33'; Ft/In/8ths
58819	1/2" x 50'; Ft/In/8ths
58821	1/2" x 66'; Ft/In/8ths
58823	1/2" x 75'; Ft/In/8ths
58825	1/2" x 100'; Ft/In/8ths
58833	1/2" x 66'; Ft/10ths
58828	1/2" x 75'; Ft/10ths
58829	1/2" x 100'; Ft/10ths
58835	1/2" x 66'; Ft/In/16ths
58837	1/2" x 100'; Ft/In/16ths

Outage Complete

59011	1/2" x 18'; Ft/In/8ths
59013	1/2" x 25'; Ft/In/8ths
59015	1/2" x 33'; Ft/In/8ths
59019	1/2" x 50'; Ft/In/8ths
59021	1/2" x 66'; Ft/In/8ths
59023	1/2" x 75'; Ft/In/8ths
59025	1/2" x 100'; Ft/In/8ths
59029	1/2" x 100'; Ft/10ths

Item # Size/Description

Innage Refill

58911	1/2" x 18'; Ft/In/8ths
58913	1/2" x 25'; Ft/In/8ths
58915	1/2" x 33'; Ft/In/8ths
58919	1/2" x 50'; Ft/In/8ths
58921	1/2" x 66'; Ft/In/8ths
58923	1/2" x 75'; Ft/In/8ths
58925	1/2" x 100'; Ft/In/8ths
58933	1/2" x 66'; Ft/10ths
58931	1/2" x 75'; Ft/10ths
58929	1/2" x 100'; Ft/10ths
58935	1/2" x 66'; Ft/In/16ths
58937	1/2" x 100'; Ft/In/16ths

Outage Refill

59111	1/2" x 18'; Ft/In/8ths
59113	1/2" x 25'; Ft/In/8ths
59115	1/2" x 33'; Ft/In/8ths
59119	1/2" x 50'; Ft/In/8ths
59121	1/2" x 66'; Ft/In/8ths
59123	1/2" x 75'; Ft/In/8ths
59125	1/2" x 100'; Ft/In/8ths
59129	1/2" x 100'; Ft/10ths



DOUBLE DUTY for Dark and Light Liquids

Item #	Size/Description	Item #	Size/Description
Innage Complete		Innage Refill	
58812	1/2" x 18'; Ft/lb/8ths	58912	1/2" x 18'; Ft/lb/8ths
58814	1/2" x 25'; Ft/lb/8ths	58914	1/2" x 25'; Ft/lb/8ths
58816	1/2" x 33'; Ft/lb/8ths	58916	1/2" x 33'; Ft/lb/8ths
58820	1/2" x 50'; Ft/lb/8ths	58920	1/2" x 50'; Ft/lb/8ths
58822	1/2" x 66'; Ft/lb/8ths	58922	1/2" x 66'; Ft/lb/8ths
58824	1/2" x 75'; Ft/lb/8ths	58924	1/2" x 75'; Ft/lb/8ths
58826	1/2" x 100'; Ft/lb/8ths	58926	1/2" x 100'; Ft/lb/8ths
58846	1/2" x 25'/7.5m; Ft/lb/8ths/m/cm/mm	58946	1/2" x 25'/7.5m; Ft/lb/8ths/m/cm/mm
58848	1/2" x 33'/10m; Ft/lb/8ths/m/cm/mm		
58850	1/2" x 50'/15m; Ft/lb/8ths/m/cm/mm	58950	1/2" x 50'/15m; Ft/lb/8ths/m/cm/mm
58853	1/2" x 66'/20m; Ft/lb/8ths/m/cm/mm	58953	1/2" x 66'/20m; Ft/lb/8ths/m/cm/mm
58854	1/2" x 75'/23m; Ft/lb/8ths/m/cm/mm	58954	1/2" x 75'/23m; Ft/lb/8ths/m/cm/mm
58856	1/2" x 100'/30m; Ft/lb/8ths/m/cm/mm	58956	1/2" x 100'/30m; Ft/lb/8ths/m/cm/mm
Outage Complete		Outage Refill	
59012	1/2" x 18'; Ft/lb/8ths	59112	1/2" x 18'; Ft/lb/8ths
59014	1/2" x 25'; Ft/lb/8ths	59114	1/2" x 25'; Ft/lb/8ths
59016	1/2" x 33'; Ft/lb/8ths	59116	1/2" x 33'; Ft/lb/8ths
59020	1/2" x 50'; Ft/lb/8ths	59120	1/2" x 50'; Ft/lb/8ths
59022	1/2" x 66'; Ft/lb/8ths	59122	1/2" x 66'; Ft/lb/8ths
59024	1/2" x 75'; Ft/lb/8ths	59124	1/2" x 75'; Ft/lb/8ths
59026	1/2" x 100'; Ft/lb/8ths	59126	1/2" x 100'; Ft/lb/8ths

**BLACK ETCHED for Clear and Dark Liquids; all sizes small frame**

Item #	Size/Description	Item #	Size/Description
Innage Complete		Innage Refill	
59246	1/2" x 25'/7.5m; Ft/lb/16ths/m/cm/mm	59346	1/2" x 25'/7.5m; Ft/lb/16ths/m/cm/mm
59257	1/2" x 33'; Ft/lb/16ths	59357	1/2" x 33'; Ft/lb/16ths
59247	1/2" x 33'/10m; Ft/lb/16ths/m/cm/mm	59347	1/2" x 33'/10m; Ft/lb/16ths/m/cm/mm
59249	1/2" x 50'/15m; Ft/lb/16ths/m/cm/mm	59349	1/2" x 50'/15m; Ft/lb/16ths/m/cm/mm
59251	1/2" x 66'/20m; Ft/lb/16ths/m/cm/mm	59351	1/2" x 66'/20m; Ft/lb/16ths/m/cm/mm
59255	1/2" x 100'/30m; Ft/lb/16ths/m/cm/mm	59355	1/2" x 100'/30m; Ft/lb/16ths/m/cm/mm
Outage Complete		Outage Refill	
59457	1/2" x 33'; Ft/lb/16ths	59557	1/2" x 33'; Ft/lb/16ths
59447	1/2" x 33'/10m; Ft/lb/16ths/m/cm/mm	59547	1/2" x 33'/10m; Ft/lb/16ths/m/cm/mm
59449	1/2" x 50'/15m; Ft/lb/16ths/m/cm/mm	59549	1/2" x 50'/15m; Ft/lb/16ths/m/cm/mm
59451	1/2" x 66'/20m; Ft/lb/16ths/m/cm/mm	59551	1/2" x 66'/20m; Ft/lb/16ths/m/cm/mm
59455	1/2" x 100'/30m; Ft/lb/16ths/m/cm/mm	59555	1/2" x 100'/30m; Ft/lb/16ths/m/cm/mm

**ETCHED STAINLESS for All Liquids; all sizes small frame**

Item #	Size/Description	Item #	Size/Description
Innage Complete		Innage Refill	
62457	1/2" x 33'; Ft/lb/16ths	62557	1/2" x 33'; Ft/lb/16ths
62447	1/2" x 33'/10m; Ft/lb/16ths/m/cm/mm	62547	1/2" x 33'/10m; Ft/lb/16ths/m/cm/mm
62449	1/2" x 50'/15m; Ft/lb/16ths/m/cm/mm	62549	1/2" x 50'/15m; Ft/lb/16ths/m/cm/mm
62451	1/2" x 66'/20m; Ft/lb/16ths/m/cm/mm	62551	1/2" x 66'/20m; Ft/lb/16ths/m/cm/mm
62452	1/2" x 75'/23m; Ft/lb/16ths/m/cm/mm	62554	1/2" x 75'/23m; Ft/lb/16ths/m/cm/mm
62453	1/2" x 82'/25m; Ft/lb/16ths/m/cm/mm	62553	1/2" x 82'/25m; Ft/lb/16ths/m/cm/mm
62455	1/2" x 100'/30m; Ft/lb/16ths/m/cm/mm	62555	1/2" x 100'/30m; Ft/lb/16ths/m/cm/mm
Outage Complete		Outage Refill	
62657	1/2" x 33'; Ft/lb/16ths	62857	1/2" x 33'; Ft/lb/16ths
62647	1/2" x 33'/10m; Ft/lb/16ths/m/cm/mm	62847	1/2" x 33'/10m; Ft/lb/16ths/m/cm/mm
62649	1/2" x 50'/15m; Ft/lb/16ths/m/cm/mm	62849	1/2" x 50'/15m; Ft/lb/16ths/m/cm/mm
62655	1/2" x 100'/30m; Ft/lb/16ths/m/cm/mm	62855	1/2" x 100'/30m; Ft/lb/16ths/m/cm/mm



DERRICK and STRAPPING TAPES



Item #	Size/Description	Item #	Size/Description
Complete		Refill	
59625	1/4" x 100' Derrick Tape	59725	1/4" x 100' Derrick Refill
59630	1/4" x 30m Derrick Tape	59730	1/4" x 30m Derrick Refill
59650	1/4" x 100' Strapping Tape	59750	1/4" x 100' Strapping Refill

PLUMB BOBS and ACCESSORIES

Innage Plumb Bob



Outage Plumb Bob



Large frame



Small frame

Line wiper



Item #	Size/Description
58883	6" Hollow plumb bob with Thermometer; graduated in 1", 1/4"; brass
58885	20 oz. Innage graduated plumb bob with Rubber Tip; brass
58887	20 oz. Innage non-graduated plumb bob; brass
58888	20 oz. Innage English/Metric graduated plumb bob; brass
58890	20.48 oz. Innage English/Metric graduated plumb bob; stainless steel
58891	20 oz. Innage Metric (cm/mm) graduated plumb bob; brass
58892	23 oz. 12" Outage English graduated plumb bob
58893	16 oz. Outage Decimal (10ths) graduated plumb bob; brass
58894	20 oz. Innage Decimal (10ths) graduated plumb bob; brass
58895	22 oz. 6" Innage English/Metric graduated plumb bob; brass with stainless steel tip
58898	16 oz. Outage plumb bob, graduated; brass
58899	20 oz. Innage plumb bob, graduated; brass
58875	Rubber Tip replacement for 58885
58877	Line Wiper
58878	Wiper replacement parts set; 2 rubber cylinders, 2 screws, 2 nuts
63004	Derrick X frame assembly
63005	Grounding wire handle and clip
63007	Small oil gauge frame assembly
63011	Large oil gauge frame assembly
63041	Grounding wire and clip alone

STEEL BENCH TAPES with ADHESIVE BACKING

- Premium steel- .0075" thick
- Adhesive backed
- Can be trimmed to desired length
- Many blade styles and lengths now available



Made in USA unless marked with *



Item #	Size	Description	Inner Pack	Master Pack
50004	1/2" x 12'/3.6m	L-R ; 32nds first Ft., then 16ths top, mm bottom; White	10	N/A
50005 *	1/2" x 12'/3.6m	R-L ; 32nds first Ft., then 16ths top, mm bottom; White	10	N/A
50006	1/2" x 12'	L-R ; 32nds first Ft., then 16ths; White	10	N/A
50007	1/2" x 12'	R-L ; 32nds first Ft., then 16ths; White	10	N/A
50008 *	1/2" x 12'	L-R ; CenterPoint® center-finding bottom, 16ths top; White	10	N/A
50009 *	1/2" x 6'	L-R ; 32nds first Ft., then 16ths; White	10	N/A
50010 *	1/2" x 6'	R-L ; 32nds first Ft., then 16ths; White	10	N/A
50011	3/4" x 25'	L-R / R-L ; 32nds first Ft., then 16ths; Yellow	5	N/A
50012	3/4" x 8m	L-R ; m/cm top, mm bottom; Yellow	5	N/A
50013 *	3/4" x 6'	L-R ; 32nds first Ft., then 16ths; White	10	N/A
50014 *	3/4" x 6'/1.8m	L-R ; 32nds first Ft., then 16ths top, mm bottom; White	10	N/A
50019	1/2" x 4'	L-R ; 32nds first Ft., then 16ths; White	10	N/A
50020	1/2" x 4'/1.2m	L-R ; 32nds first Ft., then 16ths top, mm bottom; White	10	N/A
50021	1/2" x 3m	L-R ; m/cm top, mm bottom; Yellow	10	N/A
50022	1/2" x 3m	R-L ; m/cm top, mm bottom; Yellow	10	N/A
58500	3/8" x 25'	L-R ; Continuous inches, 16ths bottom; Yellow	5	N/A
58501	3/8" x 50'	L-R ; Continuous inches, 16ths bottom; Yellow	5	N/A
58502	3/8" x 25'	R-L ; Continuous inches, 16ths bottom; Yellow	5	N/A
58503	3/8" x 50'	R-L ; Continuous inches, 16ths bottom; Yellow	5	N/A
58504	3/8" x 8m	L-R ; Continuous cm, repeat every m, mm bottom; Yellow	5	N/A
58505	3/8" x 15m	L-R ; Continuous cm, repeat every m, mm bottom; Yellow	5	N/A
58506	3/8" x 25'	L-R ; 8ths top and bottom; Yellow	5	N/A
58507	3/8" x 50'	L-R ; 8ths top and bottom; Yellow	5	N/A
58508	3/8" x 100'	L-R ; 8ths top and bottom; Yellow	5	N/A
58509	3/8" x 25'	R-L ; 8ths top and bottom; Yellow	5	N/A
58510	3/8" x 50'	R-L ; 8ths top and bottom; Yellow	5	N/A
58512	3/8" x 26'/8m	L-R ; 8ths top, cm/mm bottom; Yellow	5	N/A
58513	3/8" x 50'/15m	L-R ; 8ths top, cm/mm bottom; Yellow	5	N/A
59600 *	1/4" x 6'	L-R ; 32nds first Ft., then 8ths top, 16ths bottom; Yellow	10	N/A
59604 *	1/4" x 10'	L-R ; 32nds first Ft., then 8ths top, 16ths bottom; Yellow	10	N/A
59610 *	1/4" x 3m	L-R ; cm/mm top and bottom; Yellow	10	N/A

RHINO FLEXIBLE FOLDING RULERS

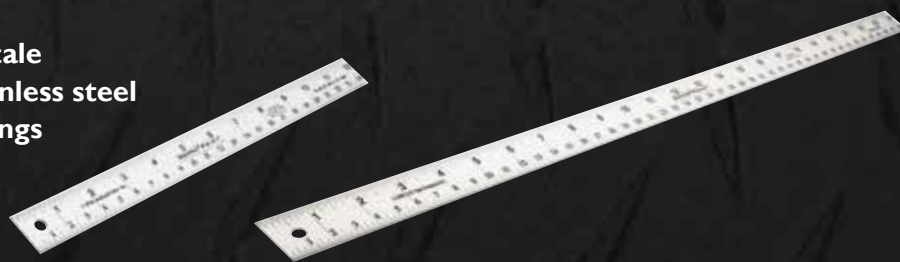
- Polyamide reinforced with 30% fiberglass
- Waterproof-will not warp or swell like wooden rulers
- Wear resistant and maintenance free
- Deeply embossed scales won't wear away under harsh working conditions
- Flexible and scratch resistant
- 90° positive stop joints



Item #	Size	Description	Inner Pack	Master Pack
55110	5/8" x 6'	Brick Spacing; other side Ft/In/16ths	6	72
55115	5/8" x 6'	Oversize Brick Spacing; other side Ft/In/16ths	6	72
55120	5/8" x 6'	Modular Spacing; other side Ft/In/16ths	6	72
55125	5/8" x 6'	Engineer's; Ft/10ths/100ths; other side Ft/In/16ths	6	72
55130	5/8" x 6'	Engineer/Metric; Ft/10ths/100ths; other side m/cm/mm	6	72
55140	5/8" x 6'	Carpenter's Outside-reading; Ft/In/16ths	6	72
55145	5/8" x 6'	Carpenter's Inside-reading; Ft/In/16ths	6	72
55155	5/8" x 6'	English/Metric; Ft/In/16ths; other side m/cm/mm	6	72
55160	5/8" x 6'	Carpenter's with 6" sliding extension; Ft/In/16ths	6	72
55170	15mm x 2m	Euro Metric; m/cm/mm; other side Ft/In/16ths	6	72

STAINLESS STEEL CENTERPOINT® RULERS

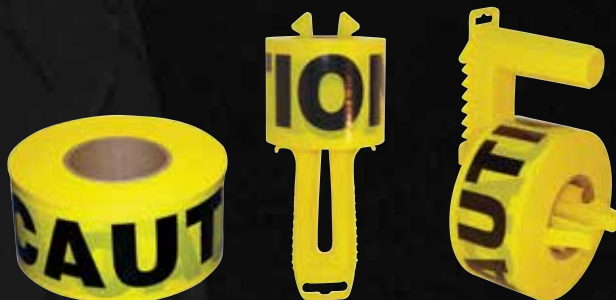
- Patented CenterPoint® scale
- .031 gauge tempered stainless steel
- Etched, black filled markings



Item #	Size	Description	Inner Pack	Master Pack
50001	1" x 12"	Stainless Steel ruler; patented Center-finding scale and 16ths	10	N/A
50002	1" x 24"	Stainless Steel ruler; patented Center-finding scale and 16ths	10	N/A

TAPEWIZ BARRICADE TAPE DISPENSER

- Dispenses barricade tape with ease
- Notch secures loose tape end
- Simple to reload
- Assorted models of barricade tape available



Item # Description

TAPEWIZ Holds 300' of 2-4 mil. barricade tape

42000	TapeWiz dispenser
42010	TapeWiz + 300' Caution Tape 2 mil
42012	TapeWiz + 300' Cuidado Tape (Sp) 2 mil

TAPEWIZ PRO Holds 1000' of 2-4 mil. barricade tape; Serrated edge cuts tape quickly; No loose parts when reloading

42003	TapeWiz Pro dispenser
42020	TapeWiz Pro + 1000' Caution 2 mil
42022	TapeWiz Pro + 1000' Police DNC 2 mil
42027	TapeWiz Pro + 1000' Fire Line DNC 2 mil
42028	TapeWiz Pro + 1000' Sheriff DNC 2 mil
42029	TapeWiz Pro + 1000' Crime DNC 2 mil
42037	TapeWiz Pro + 1000' Cuidado (Sp) 2 mil
42025	TapeWiz Pro + 1000' Electric Line Buried Below 4 mil

Item #

Length

Description

Barricade Tape

16930	300 Ft.	Caution 2 mil
16930SF	300 Ft.	Caution (Fr) 2 mil
16932	300 Ft.	Cuidado (Sp) 2 mil
16940	1000 Ft.	Caution 2 mil
16940SF	1000 Ft.	Caution (Fr) 2 mil
16942	1000 Ft.	Police DNC 2 mil
16944	1000 Ft.	Fire Line DNC 2 mil
16945	1000 Ft.	Sheriff DNC 2 mil
16946	1000 Ft.	Crime Scene DNC 2 mil
16947	1000 Ft.	Cuidado (Sp) 2 mil
16970	1000 Ft.	Electric Line Buried Below 4 mil

CORDWIZ EXTENSION CORD HOLDERS



CORDWIZ

Holds 100' of 14/3 AWG cord
Holds 150' of 16/3 AWG cord
Stand keeps cord off the ground
Use both ends without unwinding the whole cord
Eliminates cord mess
(Extension cord not included)



CORDWIZ PRO

Holds 125' of 12/3 AWG cord
Holds 150' of 14/3 AWG cord
Wrap and dispense heavy cord easily
Dispense cord automatically using rotating handles
(Extension cord not included)



CORDWIZ CLASSIC

Holds 100' of 12/3 AWG cord
Holds 125' of 14/3 AWG cord
Dispense cord automatically using rotating handles
Replaces flimsy H-winders
(Extension cord not included)

Item #

Description

30000

CordWiz

Item #

Description

30100

CordWiz Pro

Item #

Description

30200

CordWiz Classic

STRIKER DEAD BLOW HAMMERS

- Soft face prevents marring of the work surface and reduces noise
- Sand-loaded head adds weight for controlled impact, minimized rebound, and low vibration
- Controlled swing allows for less fatigue with use
- Textured grip handle makes hammer easy to hold

Item #	Size	Inner Pack	Master Pack
69002	.5 Lb.	4	24
69003	1 Lb.	4	24
69004	1.5 Lb.	4	24
69000	2 Lb.	4	24
69005	3 Lb.	4	24
69006	4 Lb.	4	24



MAGTITE MAGNETIC TAPE HOLSTER

- Grips steel studs, duct work, or any steel surface
- Powerful 35 lb. magnetic force
- Snaps easily into its belt clip holster



Item #	Size	Description	Inner Pack	Master Pack
MagTite Fits most 16', 25', 30' tapes				
59955		Magnetic tape measure holster	6	48

PENCIL PAL

- Magnetic hat clip pencil holder with pencil
- Super strong magnet
- Quality banded pencils
- Nylon clip can be used on bill of cap or over the ear



Item #	Description	Item #	Description
PENCIL PAL with Standard pencil or Carpenter pencil		PENCIL PAL DISPLAYS 36 packs with display box and clip strips	
27003	Standard pencil (3)	27013	Standard pencil
27006	Carpenter pencil (2)	27016	Carpenter pencil

PROTAPE AUTO-REWIND TAPES

- Open reel design with gear drive
- Aircraft aluminum case
- Alloy steel main shaft
- Locking brake, folding engineer's hook, belt clip
- Active bumper to cushion blade tip on rewind
- **IMPROVED** Nylon Coated double side print blade
- Variety of blade styles and lengths
- Complete tapes and refill blades



Item #	Size	Description	Inner Pack	Master Pack
PROTAPE Auto-Rewind Tapes with Nylon Coated Blade-Made in USA with global components				
45622	3/8" x 50'	Black aluminum case (Model 950B); Ft/In/8ths	1	12
47322	3/8" x 100'	Black aluminum case (Model 900B); Ft/In/8ths	1	12
45422	3/8" x 50'/15m	Black aluminum case (Model 950EMB); Ft/In/8ths/m/cm	1	12
45722	3/8" x 15m	Black aluminum case (Model 950MEB); m/cm	1	12
47422	3/8" x 30m/Dia.	Black aluminum case (Model 900MEDB); m/cm/Diameter	1	12
45322	3/8" x 50'/Dia.	Black aluminum case (Model 950DCB); Ft/10ths/Diameter	1	12
47122	3/8" x 100'/Dia.	Black aluminum case (Model 900DCB); Ft/10ths/Diameter	1	12
48400	3/8" x 50'	Yellow Delrin plastic case (Model 50SXB); Ft/In/8ths	1	24
PROTAPE Auto-Rewind Nylon Coated Refill blades				
45629	3/8" x 50'	Refill for 45622 and 68400 (Model 965E); Ft/In/8ths	6	96
47329	3/8" x 100'	Refill for 47322 (Model 905E); Ft/In/8ths	6	48
45429	3/8" x 50'/15m	Refill for 45422 (Model 965EME); Ft/In/8ths/m/cm	6	96
45729	3/8" x 15m	Refill for 45722 (Model 965MEE); m/cm	6	96
47429	3/8" x 30m/Dia.	Refill for 47422 (Model 905MEDE); m/cm/Diameter	6	48
45329	3/8" x 50'/Dia.	Refill for 45322 (Model 965DCE); Ft/10ths/Diameter	6	96
47129	3/8" x 100'/Dia.	Refill for 47122 (Model 905DCE); Ft/10ths/Diameter	6	48

PROTAPE OPEN REEL TAPES

- Nylon Clad Steel or Fiberglass blades
- ABS plastic case with contoured grip handle
- Hand-wind
- Folding end hook
- Extra large stake enables secure measurements



Item #	Size	Description	Inner Pack	Master Pack
Nylon Clad Steel blade				
59927	1/2" x 100'	English; Ft/In/8ths	1	20
59928	1/2" x 200'	English; Ft/In/8ths	1	10
59929	1/2" x 300'	English; Ft/In/8ths	1	10
59932	1/2" x 100'/30m	English/Metric; Ft/In/8ths/m/cm	1	20
59933	1/2" x 200'/60m	English/Metric; Ft/In/8ths/m/cm	1	10
59934	1/2" x 300'/90m	English/Metric; Ft/In/8ths/m/cm	1	10
59936	1/2" x 100'	Engineer's; Ft/10ths/100ths	1	20
59937	1/2" x 200'	Engineer's; Ft/10ths/100ths	1	10
59938	1/2" x 300'	Engineer's; Ft/10ths/100ths	1	10



Item #	Size	Description	Inner Pack	Master Pack
Fiberglass blade				
59962	1/2" x 100'/30m	English/Metric; Ft/In/8ths/m/cm	1	20
59963	1/2" x 200'/60m	English/Metric; Ft/In/8ths/m/cm	1	10
59964	1/2" x 300'/90m	English/Metric; Ft/In/8ths/m/cm	1	10
59965	1/2" x 100'	English; Ft/In/8ths	1	20
59966	1/2" x 200'	English; Ft/In/8ths	1	10
59967	1/2" x 300'	English; Ft/In/8ths	1	10
59972	1/2" x 100'	Engineer's; Ft/10ths/100ths	1	20
59973	1/2" x 200'	Engineer's; Ft/10ths/100ths	1	10
59974	1/2" x 300'	Engineer's; Ft/10ths/100ths	1	10

BLACK VINYL COVERED STEEL CASE TAPES

- Made in USA
- Yellow, Chrome, or White blades
- Folding end hook
- Hand-wind



Item #	Size	Description	Inner Pack	Master Pack
58515	3/8" x 25'	Yellow blade; Ft/l n/8ths	6	28
58519	3/8" x 50'	Yellow blade; Ft/l n/8ths	6	28
58525	3/8" x 100'	Yellow blade; Ft/l n/8ths	6	28
58549	3/8" x 50'/15m	Yellow blade; Ft/l n/8ths/m/cm	6	28
58551	3/8" x 66'/20m	Yellow blade; Ft/l n/8ths/m/cm	6	28
58555	3/8" x 100'/30m	Yellow blade; Ft/l n/8ths/m/cm	6	28
58522	3/8" x 50'	Yellow blade; Ft/10ths	6	28
58530	3/8" x 100'	Yellow blade; Ft/10ths	6	28
68560	3/8" x 50'/Dia.	Yellow blade; Ft/10ths/Diameter	6	28
58521	3/8" x 50'	Chrome blade; Ft/l n/8ths	6	28
58535	3/8" x 100'	Chrome blade; Ft/l n/8ths	6	28
58520	3/8" x 50'	Chrome blade; Ft/10ths	6	28
58528	3/8" x 100'	Chrome blade; Ft/10ths	6	28
58550TC	3/8" x 50'/15m	White blade; Ft/10ths/m/cm	6	28
58556TC	3/8" x 100'/30m	White blade; Ft/10ths/m/cm	6	28

CONTRACTOR LONG TAPES

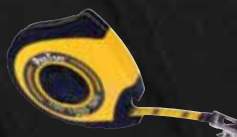
- Made in USA
- ABS plastic case
- Folding end hook
- Hand-wind



Item #	Size	Description	Inner Pack	Master Pack
58620	3/8" x 50'	Yellow case; Ft/l n/8ths	6	28
58621	3/8" x 50'/15m	Yellow case; Ft/l n/8ths/m/cm	6	28
58630	3/8" x 100'	Yellow case; Ft/l n/8ths	6	28
58633	3/8" x 100'/30m	Yellow case; Ft/l n/8ths/m/cm	6	28
58610	3/8" x 50'	Orange case; Ft/l n/8ths	6	28
58615	3/8" x 100'	Orange case; Ft/l n/8ths	6	28
58619	3/8" x 50'	Black case; Ft/l n/8ths	6	28
58649	3/8" x 50'/15m	Black case; Ft/l n/8ths/m/cm	6	28
58625	3/8" x 100'	Black case; Ft/l n/8ths	6	28
58655	3/8" x 100'/30m	Black case; Ft/l n/8ths/m/cm	6	28

PROTAPE CONSTRUCTION GRADE TAPE

- ABS plastic case with comfort rubber grip
- Folding end hook
- Hand-wind

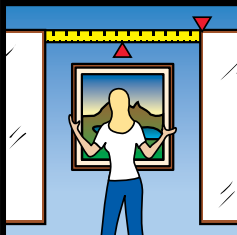


Item #	Size	Description	Inner Pack	Master Pack
58794	3/8" x 100'	Yellow case with rubber grip; Ft/l n/8ths	12	N/A

CENTERPOINT® PATENTED CENTER-FINDING PRODUCTS

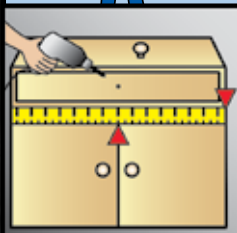
HOUSEHOLD

- Picture hanging
- Interior decorating
- Tile work
- Installing cabinets



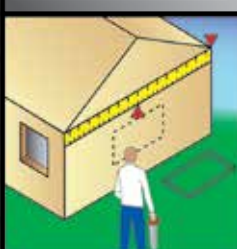
WORKSHOP

- Woodworking
- Framing
- Cabinet design



CONSTRUCTION

- Remodeling
- Brickwork
- Plumbing
- Electrical



EASY TO USE

Just take your measurement using the top scale.



Then find that same number on the bottom scale.

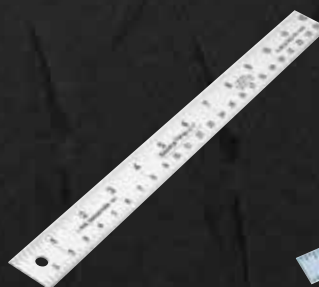
THIS IS THE CENTER!

Simple Accurate Fast

Simplify common jobs such as layout (for floors, tile, framing, and cabinets), hanging pictures, installing drawer pulls, or any job that requires dividing a measured distance.

Mark the exact center of your work every time and avoid costly mistakes.

Quickly divide fractions without complicated math. Use this one simple tool for all your measuring needs. CenterPoint® tapes have the patented center-finding scale as well as all standard markings.



Item #	Size	Description	Inner Pack	Master Pack
50036	3/4" x 16'	CenterPoint® tape measure in Yellow/Black case (XR style)	6	48
50035	1" x 25'	CenterPoint® tape measure in Yellow/Black case (XR style)	6	48
53825	1" x 25'	CenterPoint® tape measure in Chrome/Red case	6	48
50001	1" x 12"	CenterPoint® Stainless Steel ruler	10	N/A
50002	1" x 24"	CenterPoint® Stainless Steel ruler	10	N/A
50008	1/2" x 12'	CenterPoint® Adhesive-backed steel bench tape	10	N/A

CLASSIC SERIES TAPES - MADE in USA

- Original case design that has stood the test of time
- Durable ABS plastic case
- Large numbers for easy reading
- Crafted for the professional
- Made in USA



Item #	Size	Description	Inner Pack	Master Pack
56705	1/2" x 10'	Chrome case; Ft/In/16ths	10	80
56735	1/2" x 10'3m	Chrome case; Ft/In/16ths/m/cm/mm	10	80
56707	1/2" x 12'	Chrome case; Ft/In/16ths	10	80
56737	1/2" x 12'3.5m	Chrome case; Ft/In/16ths/m/cm/mm	10	80
56907	3/4" x 12'	Chrome case; Ft/In/16ths	6	48
56937	3/4" x 12'3.5m	Chrome case; Ft/In/16ths/m/cm/mm	6	48
56908	3/4" x 12' (10ths)	Chrome case; Ft/10ths/100ths and In/16ths	6	48
56909	3/4" x 16'	Chrome case; Ft/In/16ths	6	48
56939	3/4" x 16'5m	Chrome case; Ft/In/16ths/m/cm/mm	6	48
57213	1" x 25'	Chrome case; Ft/In/16ths (32nds first 6")	6	48
57243	1" x 26'8m	Chrome case; Ft/In/16ths/m/cm/mm	6	48
56605	1/2" x 10'	Black case; Ft/In/16ths	10	80
56635	1/2" x 10'3m	Black case; Ft/In/16ths/m/cm/mm	10	80
56607	1/2" x 12'	Black case; Ft/In/16ths	10	80
56637	1/2" x 12'3.5m	Black case; Ft/In/16ths/m/cm/mm	10	80
56807	3/4" x 12'	Black case; Ft/In/16ths	6	48
56837	3/4" x 12'3.5m	Black case; Ft/In/16ths/m/cm/mm	6	48
56809	3/4" x 16'	Black case; Ft/In/16ths	6	48
56839	3/4" x 16'5m	Black case; Ft/In/16ths/m/cm/mm	6	48
57113	1" x 25'	Black case; Ft/In/16ths (32nds first 6")	6	48
57143	1" x 26'8m	Black case; Ft/In/16ths/m/cm/mm	6	48
57613	1" x 25'	Orange case; Ft/In/16ths (32nds first 6")	6	48
57643	1" x 26'8m	Orange case; Ft/In/16ths/m/cm/mm	6	48

DIAMETER PRO - Made in USA

- Converts circumference to diameter
- Double side printed blade
Feet/Inches/16ths on front
Diameter equivalents in 16ths and 10ths on back



Item #	Size	Description	Inner Pack	Master Pack
56675	3/8" x 12'	Black Classic case; loop end	10	80

PROTAPE XLT SERIES TAPES



NEW!

- Nylon coated blade for added durability
- Gold and Silver Chrome ABS plastic case
- Comfort rubber grip
- Matte finish on blade
- Large, multi-riveted end hook
- Positive lock
- Heavy duty spring

Item #	Size	Description	Inner Pack	Master Pack
PROTAPE XLT Series Nylon Coated large-read English blade				
53525	1" x 25'	Gold + Silver Chrome case; Ft/In/16ths (32nds to first 12")	6	48

PROTAPE CB SERIES TAPES



- Fractional-Read blade
- Chrome/Black ABS plastic case
- Matte finish on blade
- Large, multi-riveted end hook
- Compact design
- Positive lock

Item #	Size	Description	Inner Pack	Master Pack
PROTAPE CB Series Fractional-read blade; Shows fractions to 8ths, markings to 16THS				
53712	5/8" x 12'	Chrome/Black case; Ft/In/16ths (32nds to first 12")	6	48
53716	3/4" x 16'	Chrome/Black case; Ft/In/16ths (32nds to first 12")	6	48
53725	1" x 25'	Chrome/Black case; Ft/In/16ths (32nds to first 12")	6	48

PROTAPE CR SERIES TAPES



- Patented Center-Finding scale
- Chrome/Red ABS plastic case
- Matte finish on blade
- Large, multi-riveted end hook
- Compact design
- Positive lock

Item #	Size	Description	Inner Pack	Master Pack
PROTAPE CR Series Patented CenterPoint® blade; Center-finding scale; All standard markings and graduations				
53825	1" x 25'	Chrome/Red case; Ft/In/16ths	6	48

PROTAPE XR SERIES CONSTRUCTION GRADE TAPES

- Compact design ABS plastic case
- Comfort rubber grips
- Matte finish on blade
- Large, multi-riveted end hook
- Positive Lock
- Heavy duty spring
- Active bumper

Yellow case unless noted



Specialty blade styles



Item #	Size	Description	Inner Pack	Master Pack
52712	3/4" x 12'	Carpenter's; Large, easy to read numbers; Ft/In/16ths	6	48
52716	3/4" x 16'	Carpenter's	6	48
52725	1" x 25'	Carpenter's	6	48
52745	1" x 25'	Carpenter's; Red case	6	48
52730	1" x 30'	Carpenter's	6	48
50036	3/4" x 16'	CenterPoint®; Center-finding scale; All standard markings	6	48
50035	1" x 25'	CenterPoint®	6	48
52717	3/4" x 16'/5m	English/Metric; Ft/In/16ths and m/cm/mm	6	48
52768	1" x 26'/8m	English/Metric	6	48
53025	1" x 25'	Engineer's; Ft/10ths/100ths and Ft/In/16ths	6	48
52436	3/4" x 16'	Brick Spacing; 10 Common course scales	6	48
52446	3/4" x 16'	CSR Brick Spacing; Large brick scales	6	48
52466	3/4" x 16'	Modular Spacing; Various masonry scales	6	48
52718	19mm x 3m	Metric; Red case; m/cm/mm	6	48
52719	19mm x 5m	Metric	6	48
52748	25mm x 8m	Metric	6	48

PRIVATE LABEL TAPE MEASURE PROGRAM



You can private label our quality ProTape XLT, CB, CR, and XR series short tapes in a variety of blade styles including:

Carpenter's (English) Fractional-Read CenterPoint® English/Metric Engineer's

Labels are FULL COLOR and FULL SIZE.

There are NO LABEL CHARGES or SET UP FEES!

IT'S SIMPLE

1. Choose your tape model and size

Choose from our Protape XLT, Protape CB, Protape CR, or Protape XR series short tapes in any blade style or length.*

2. Place your order

Please email privatelabel@ustape.com for specific ordering information.

There is a minimum order of 72 pieces (for higher quantities please order in increments of 12).

Production turnaround time is approximately 10 business days after label approval.

There is a 50% deposit required on orders for new customers. (All promotional companies' orders will have 50% deposit due at time of order, and remaining balance due at time of shipment, payable by credit card.)

3. Design your label

You can design your own label, or send your logo, color requirements and any information you want to include on your label to our art department and we'll do it for you. Contact us by email at privatelabel@ustape.com.

We can work with electronic files (ai, eps, pdf, jpg, tif, bmp), or scannable logos.

**Item # 56675 (Diameter Pro) is not available for private label.*



Packaging Options:

1. Bulk (All)
2. Individual white boxes (All)
3. U.S. Tape hang cards (All)
4. **NEW** Private Labeled plastic hang cards (All)
You can customize your hang card with any information you want (Company logo, address, website, slogan, etc.)
5. U.S. Tape hang cards in a 12 pc. Counter Display (All, except XLT)
6. 12 pack Bulk Counter Display (XR 25' +30', CR and CB 25' only)

Options 1, 2, 3 are NO charge. There is an additional fee / tape for options 4, 5, and 6.

WARRANTY

U.S.Tape Company warrants to the purchaser that should this product or any part thereof, under normal use and conditions, be proven defective in material or workmanship within the first twelve month period from the date of shipment, such defect(s) will be repaired, replaced, or credited at the Company's option, without charge for parts or labor directly related to the defect(s).

RETURNS and CLAIMS

Prior authorization must be obtained through customer service before any return to the factory will be honored for credit or replacement at our discretion.

All order discrepancies must be reported to customer service within 10 days of invoice date.

TERMS and CONDITIONS**PAYMENT TERMS:**

Net 30 days

MINIMUM ORDER:

Minimum order is \$100 Net

NEW ACCOUNTS:

New accounts must sign our Customer Credit Application and provide bank, trade, credit references and a COPY of RESALE CERTIFICATE at time of initial order.

Amount of credit to be established at sole discretion of the U.S.Tape credit department.

FREIGHT:

Shipping and Handling charges will be applied to orders totaling less than the "prepaid" minimums.

Freight will be prepaid* on all orders valued at \$500.00 or more to one destination within the contiguous U. S. by carrier of our choice.

*Freight will be prepaid on all orders valued at \$1000.00 or more to Alaska and Hawaii.

Canadian prepaid shipping (US\$):

\$750 QC, ON; \$1000 NL, NS, PE, NB, MB, SK, AB, BC;

\$1500 NU, NT, YT

All Forestry items and Special Orders are freight collect.

PRICING:

Prices are subject to change and will be those in effect at the time of shipment.

U.S.TAPE Company

**2452 Quakertown Road, Suite 300
Pennsburg, PA 18073**

Tel: 215-541-1850

Fax: 215-541-1760

General Inquiries Email: info@ustape.com

Order Inquiries Email: orders@ustape.com

Web: www.ustape.com

www.stringliner.com

www.oilgaugingtapes.com