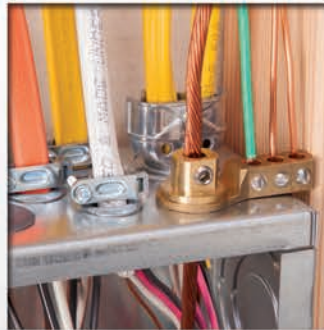
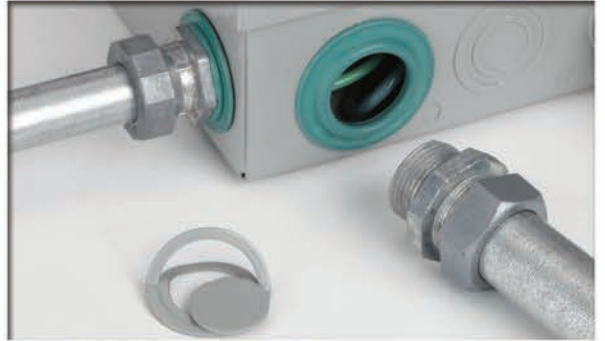


# RESIDENTIAL PRODUCTS



**SEE THE BRIDGEPORT FITTINGS DIFFERENCE**



SCAN TO  
VISIT OUR  
YOUTUBE  
CHANNEL



# THE BRIDGEPORT DIFFERENCE: WE HELP YOU DO MORE WITH LESS

**WHERE AMERICA LIVES,  
YOU'LL FIND BRIDGEPORT.**

Products for single and multi-family homes, condominiums and mobile homes.

**PUT THE BRIDGEPORT  
DIFFERENCE TO WORK FOR YOU.**

The Bridgeport Difference is an operating philosophy that guides our engineering, production, service and support to deliver what our customers need to solve problems and succeed – helping you cut material cost and time in the field.

**YOU'LL FIND THE  
BRIDGEPORT DIFFERENCE  
IN EVERY PRODUCT WE MAKE.**

Check out the product innovations throughout this catalog to see the hundreds of ways the Bridgeport Difference can do more for you.



FOR MORE INFORMATION, VISIT [WWW.BPTFITTINGS.COM](http://WWW.BPTFITTINGS.COM).





**RIGHT AT HOME MEETING THE DEMANDING NEEDS  
OF RESIDENTIAL TIME AND COST CHALLENGES**





## EMT FITTINGS



Zinc 1/2" thru 1"

### Set Screw Couplings

Set screw type couplings used to join two lengths of EMT. Concrete-tight. Furnished with Tri-Drive slot/Phillips/Robertson head screws.

UL File No. E24001

CSA File No. LR39354



Zinc 1 1/4" thru 2"

### Zinc Die Cast

Catalog Number	Trade Size	Unit Qty.	Std. Pkg.
240-DC	1/2"	50	500
241-DC	3/4"	25	250
242-DC	1"	25	250
243-DC	1 1/4"	10	100
244-DC	1 1/2"	10	100
245-DC	2"	10	60



1/2" thru 1"

### Set Screw Connectors

Set screw connectors used to join EMT to box or enclosure. Concrete-tight. Furnished with Tri-Drive slot/Phillips/Robertson head screws.

UL File No. E24001

CSA File No. LR39354



1 1/4" thru 2"

### Zinc Die Cast

Catalog Number	Trade Size	Unit Qty.	Std. Pkg.
230-DC2	1/2"	50	500
231-DC2	3/4"	25	250
232-DC2	1"	25	250
233-DC2	1 1/4"	10	100
234-DC2	1 1/2"	10	100
235-DC2	2"	10	60



2 1/2" thru 4"

### Zinc Die Cast / Insulated Throat - 105°C

Catalog Number	Trade Size	Unit Qty.	Std. Pkg.
230-DCI2	1/2"	50	500
231-DCI2	3/4"	25	250
232-DCI2	1"	25	250
233-DCI2	1 1/4"	10	100
234-DCI2	1 1/2"	10	100
235-DCI2	2"	10	60



### Mighty-Align® EMT Slip Couplings

Used to join two lengths of EMT in tight or limited-access applications. Back out center screw, slide coupling over one end of conduit, then slide other conduit into place. Fully install center screw between conduits and tighten set screws.

cULus File No. E24001

### Zinc Die Cast

Catalog Number	Trade Size	Unit Qty.	Std. Pkg.
241-DCSLP	3/4"	25	250
242-DCSLP	1"	25	250

## EMT FITTINGS



### PUSH-EMT®

#### Mighty-Seal® Raintight Connectors

cULus File No. E24001



Catalog Number	Trade Size	Unit Qty.	Std. Pkg.
250-MSRT	1/2"	25	250
251-MSRT	3/4"	25	250



#### Mighty-Seal® Raintight Connectors (Insulated)

cULus File No. E24001



Catalog Number	Trade Size	Unit Qty.	Std. Pkg.
250-MSRTI	1/2"	25	250
251-MSRTI	3/4"	25	250



#### Mighty-Seal® Raintight Couplings

cULus File No. E24001



Catalog Number	Trade Size	Unit Qty.	Std. Pkg.
260-MSRT	1/2"	25	250
261-MSRT	3/4"	25	250



#### Mighty-Bite™ Dry-Location Connectors

cULus File No. E24001



Catalog Number	Trade Size	Unit Qty.	Std. Pkg.
250-MB	1/2"	25	250
251-MB	3/4"	25	250



#### Mighty-Bite™ Dry-Location Connectors (Insulated)

cULus File No. E24001



Catalog Number	Trade Size	Unit Qty.	Std. Pkg.
250-MBI	1/2"	25	250
251-MBI	3/4"	25	250



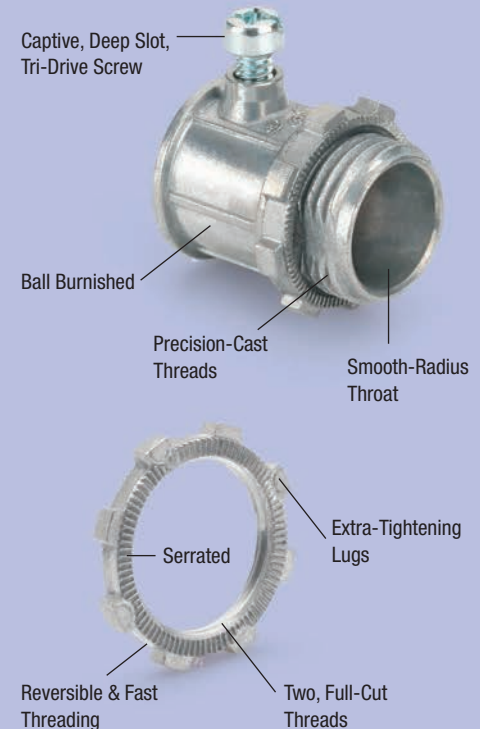
#### Mighty-Bite™ Dry-Location Couplings

cULus File No. E24001



Catalog Number	Trade Size	Unit Qty.	Std. Pkg.
260-MB	1/2"	25	250
261-MB	3/4"	25	250

## THE BRIDGEPORT DIFFERENCE FOR EMT



### The Locknuts

- Extra tightening lugs accessible from all angles – easy installation
- Serrated on both sides for installation flexibility – cannot be improperly installed
- Serrated design provides increased continuity and has the ability to remove non-conductive coatings
- Two, full-cut threads spin on with one finger ease, help prevent cross threading and resist jumping threads when tightened

### The Body

- Strong ribbed design for added strength
- Smooth conduit entry and flush-mounted screws allow easy conduit insertion
- Smooth radius throat prevents damage to conductor insulation
- Precision-cast threads are perfectly matched between the fitting and locknut
- Locknuts are threaded ¾ of the way onto the fitting to prevent disassembly in transit
- Ball Burnished finish closes surface porosity, reduces mechanical friction, enhances corrosion protection and gives a characteristic shine



# LIQUID TIGHT FITTINGS



## Liquid Tight Connectors, Straight & 90°

Nonmetallic straight and 90° connectors for use with nonmetallic "Type B" liquid tight conduit. Sunlight resistant.

cULus File No. E9391



429-NMLT

### Straight Nonmetallic

Catalog Number	Trade Size	Unit Qty.	Std. Pkg.
429-NMLT	3/8"	25	100
430-NMLT	1/2"	25	100
431-NMLT	3/4"	10	50
432-NMLT	1"	5	25
433-NMLT	1 1/4"	5	25
434-NMLT	1 1/2"	2	10
435-NMLT	2"	2	10



470-NMLT

### 90° Nonmetallic

Catalog Number	Trade Size	Unit Qty.	Std. Pkg.
469-NMLT	3/8"	25	100
470-NMLT	1/2"	25	100
471-NMLT	3/4"	10	50
472-NMLT	1"	5	25
473-NMLT	1 1/4"	2	10
474-NMLT	1 1/2"	2	10
475-NMLT	2"	2	10

## Screw-On Liquid Tight Connectors, Straight & 90°

Nonmetallic straight and 90° connectors for use with nonmetallic "Type B" liquid tight conduit. Connectors simply screw onto conduit. No tools required! Sunlight resistant.

UL File No. E9391



430-NMLTS

### Straight Nonmetallic

Catalog Number	Trade Size	Unit Qty.	Std. Pkg.
430-NMLTS	1/2"	25	100
431-NMLTS	3/4"	25	100



470-NMLTS

### 90° Nonmetallic

Catalog Number	Trade Size	Unit Qty.	Std. Pkg.
470-NMLTS	1/2"	10	100
471-NMLTS	3/4"	10	100

## LIQUID TIGHT FITTINGS



### Push-on Nonmetallic Liquidtight Connector

Push-on Nylon, Swivel Type, Multi-Angle Connectors for 0-90° Nonmetallic Liquidtight (LNMFC) Connections. Rubber O-Ring and steel locknut included. Nylon construction resists salt water, weak acids, gasoline, alcohol, oil, grease, and many common solvents. No disassembly required: installs by pushing the connector onto the conduit or tubing and tightening the domed sealing nut.

UL File No. 9391

### Swivel Nonmetallic

Catalog Number	Trade Size	Unit Qty.	Std. Pkg.
480-NMLTS	1/2"	10	100
481-NMLTS	3/4"	10	100



### Liquid Tight Connectors, 90°

90° connectors for use with metallic and nonmetallic "Type B" liquid tight conduit.

UL File No. E9391

CSA File No. LR39354

### Die Cast Zinc

Catalog Number	Trade Size	Unit Qty.	Std. Pkg.
469-LT2	3/8"	25	100
470-LT2	1/2"	25	100
471-LT2	3/4"	10	50
472-LT2	1"	5	25
473-LT2	1 1/4"	5	25

### Die Cast Zinc / Insulated Throat - 105°C

Catalog Number	Trade Size	Unit Qty.	Std. Pkg.
469-LTI2	3/8"	25	100
470-LTI2	1/2"	25	100
471-LTI2	3/4"	10	50
472-LTI2	1"	5	25
473-LTI2	1 1/4"	5	25

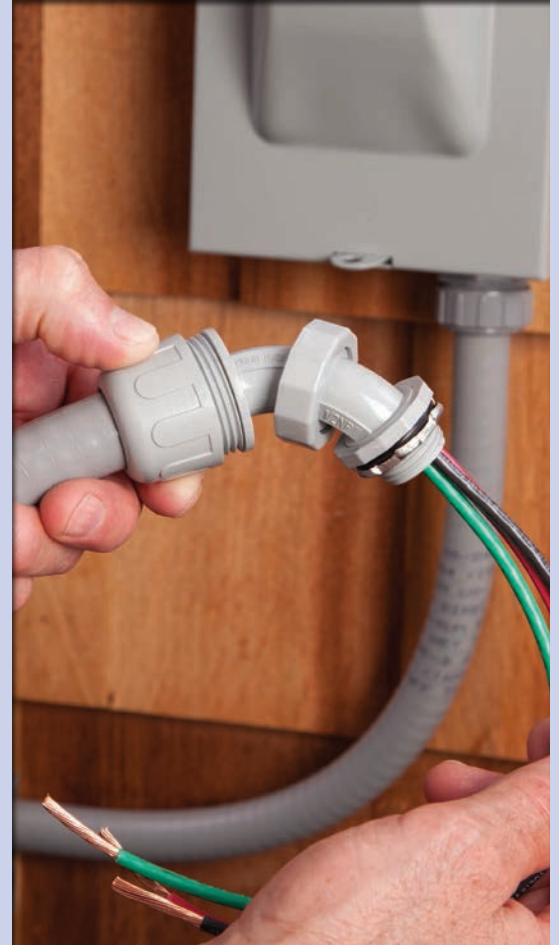
### Cast Zinc

Catalog Number	Trade Size	Unit Qty.	Std. Pkg.
474-LT2	1 1/2"	2	10
475-LT2	2"	---	5

### Cast Zinc / Insulated Throat - 105°C

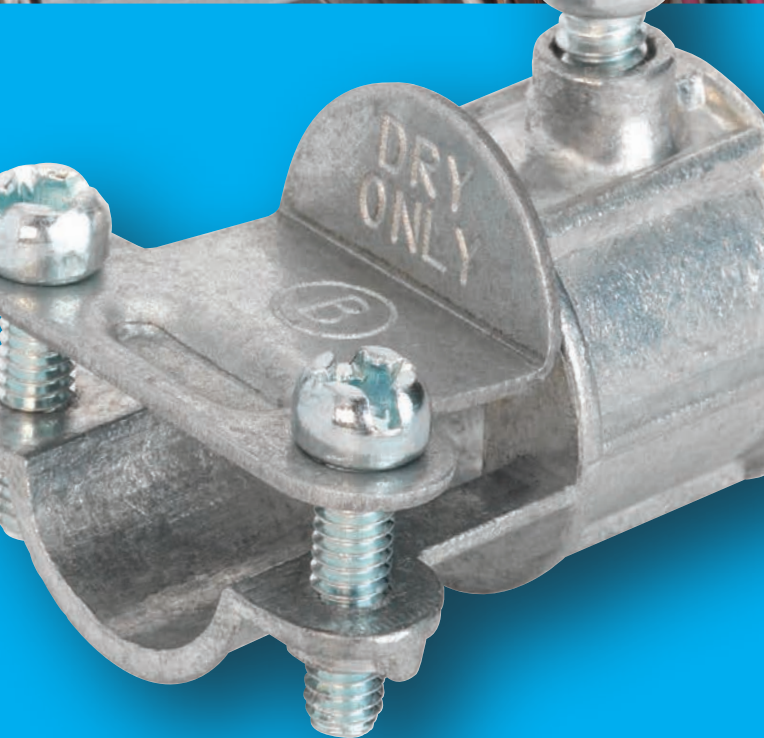
Catalog Number	Trade Size	Unit Qty.	Std. Pkg.
474-LTI2	1 1/2"	2	10
475-LTI2	2"	---	5

## THE BRIDGEPORT DIFFERENCE FOR LIQUID TIGHT





## NONMETALLIC CABLE FITTINGS



### Combination Couplings

Set screw type couplings used to join EMT to nonmetallic cable. Steel strap. Patented. cULus File No. E9391



#### Zinc Die Cast

Catalog Number	Nonmetallic Cable Range	Unit Qty.	Std. Pkg.
280-DC	(2) 14/2	25	100
	(1) 12/3		



### Single Screw Strap Type Connector With Tri-Drive Screw

For connecting 14/2 to 10/2 nonmetallic cable to box or enclosure. CSA listed for 14/2 to 10/3 ACG90. cULus File No. E20534  
CSA File No. LR39354



#### Zinc Die Cast

Catalog Number	Trade Size	K.O. Size	Unit Qty.	Std. Pkg.
560-DC2	3/8"	1/2"	50	500



### Multi-Purpose Connector Two Screw, Strap Type

Used to connect 14/2 to 12/2 nonmetallic sheath cable (NM-B), steel/aluminum 14/2 to 12/2 armored cable (AC), metal clad (MC) cable, or steel/aluminum 3/8" flexible metal conduit to 1/4" knockout. Will fit 1/4" knockouts with flats, such as used in lighting applications.

Recognized UL File No. E9391

#### Zinc Die Cast

Catalog Number	Trade Size	K.O. Size	Unit Qty.	Std. Pkg.
563-DC2	3/8"	1/4"	50	500

### Duplex Connector

Strap type fitting used to connect 14/3 to 10/3 nonmetallic cable to box or enclosure. CSA listed for 14/2 to 10/3 ACG90.

UL File No. E20534

CSA File No. LR39354



#### Zinc Die Cast

Catalog Number	Trade Size	K.O. Size	Unit Qty.	Std. Pkg.
601-DC2	3/8"	1/2"	20	200



## NONMETALLIC CABLE FITTINGS



616-NMD

### PVC "Snap-In" Type Connectors

For connecting nonmetallic cable to box or enclosure. Locknut not required.

UL File No. E11698



617-NMD

#### PVC

Catalog Number	K.O. Size	Nonmetallic Cable Range		Unit Qty.	Std. Pkg.
		Min.	Max.		
616-NMD	1/2"	One 14/2	to 6/2	100	1000
		Two 14/2 to 12/3 In Any Combination			



617-NMD	3/4"	One 8/2, 8/3, 6/2, 6/3		50	500
---------	------	---------------------------	--	----	-----



### PVC "Snap-In" Type Connectors

For connecting nonmetallic cable to box or enclosure. Locknut not required.

UL File No. E11698

CSA File No. LR74878

#### PVC

Catalog Number	K.O. Size	Nonmetallic Cable Range		Unit Qty.	Std. Pkg.
		Min.	Max.		
620-NM	1/2"	14/2	10/3	50	500
		Or Two 14/2 12/2			



Catalog Number	K.O. Size	Nonmetallic Cable Range		Unit Qty.	Std. Pkg.
		Min.	Max.		
621-NM	3/4"	8/3	6/3	25	250
		Or Two 12/3 8/3			



### Two-Piece Clamp Type Connectors

For connecting single nonmetallic cable to box or enclosure. Locknut not required.

UL File No. E11698: 642 thru 644

#### Steel

Catalog Number	K.O. Size	Nonmetallic Cable Range		Unit Qty.	Std. Pkg.
		Min.	Max.		
642	1/2"	.180"	.560"	100	1000
643	3/4"	.250"	.830"	50	500
644	1 1/4"	.250"	.980"	50	250
645	1 1/2"	.312"	1.125"	20	100



### Single Screw, Strap Type Connector

For connecting nonmetallic cable to box or enclosure. For use with one or two 14/2 NM-B or 12/2 NM-B cables, or one 14/2 through 10/3 NM-B cable. Also listed for use with 18/3 to 12/3 SJO cord. Patented.

UL File No. E11698

#### Zinc Die Cast

Catalog Number	Trade Size	K.O. Size	Unit Qty.	Std. Pkg.
651-DC2	3/8"	1/2"	100	1000



### Whipper-Snap® Single Screw, Strap Type Connector

For connecting nonmetallic cable to box or enclosure. For use with one 14/2 to 10/3 or two 14/2 to 12/2 NM-B cables. Also listed for use with 18/3 to 12/3 SJO cord. Simply snap connector into electrical box. External spring-steel locking tabs secure connector to electrical box. Patented Whipper-Snap design.

UL File No. E11698

#### Zinc Die Cast

Catalog Number	Trade Size	K.O. Size	Unit Qty.	Std. Pkg.
651SP	3/8"	1/2"	100	1000



566-DC2

### Two Screw, Strap Type Connectors

For connecting nonmetallic cable to box or enclosure. 566-DC2, 650-DC2 and 650-HD2 can be used for one or two 14/2 or 12/2 NM-B cables or one 14/2 through 10/3 NM-B cable. The 650-DC2 is also listed for use with 18/3 to 12/3 SJO cord. The 650-HD2 has a die cast strap for heavy duty use and is listed for use with 16/2 to 14/3 SJO cord. The 566-DC2 is also CSA listed for 14/2 to 10/3 ACG90.

UL File No. E20534: 566-DC2

UL File No. E11698: 650-DC2, 651SP, 650-HD2

UL File No. E15123: 660-DC2 thru 666-DC2;  
670-DC2 thru 676-DC2

CSA File No. LR39354: 650-DC2, 660-DC2, 670-DC2, 566-DC2


 660-DC2 thru  
666-DC2

#### Zinc Die Cast - Round Cable

Catalog Number	K.O. Size	Nonmetallic Cable Range		Unit Qty.	Std. Pkg.
		Min.	Max.		
566-DC2	1/2"	14/2	or larger	100	1000
660-DC2	3/4"	.680"	.800"	25	250
662-DC2	1"	.850"	1.000"	10	100
664-DC2	1 1/4"	1.090"	1.300"	10	100
665-DC2	1 1/2"	1.187"	1.490"	---	25
666-DC2	2"	1.750"	1.950"	---	25

# RESIDENTIAL PRODUCTS

## NONMETALLIC CABLE FITTINGS



650-DC2 thru  
676-DC2

### Zinc Die Cast - Oval Cable

Catalog Number	K.O. Size	Oval Service Cable Size		Unit Qty.	Std. Pkg.
		Height	Width		
650-DC2	1/2"	.250"	.500"	100	1000
650-HD2	1/2"	.250"	.500"	100	1000
670-DC2	3/4"	.437"	.625"	25	250
672-DC2	1"	.500"	.750"	10	100
674-DC2	1 1/4"	.625"	1.062"	10	100
675-DC2	1 1/2"	.750"	1.250"	---	25
676-DC2	2"	1.062"	1.625"	---	25



### Whipper-Snap® Two Screw, Strap Type Connector

For connecting nonmetallic cable to box or enclosure. For use with one 14/2 to 10/3 or two 14/2 to 12/2 NM-B cables. Simply snap connector into electrical box. External spring-steel locking tabs secure connector to electrical box. Patented Whipper-Snap design.

UL File No. E11698

### Zinc Die Cast

Catalog Number	Trade Size	K.O. Size	Unit Qty.	Std. Pkg.
841SP	3/8"	1/2"	100	1000



### Knockout Insulating Bushings

Converts metallic box rough-edged holes to smooth insulated holes for protection of electrical, voice, data and video cables.

CSA File No. LR24719

UL File No. E240912

### Plastic Rated 105°C

Catalog Number	K.O.	K.O. Dia.	Unit Qty.	Std. Pkg.
9791	1/2"	.875"	100	1000
9792	3/4"	1.109"	100	1000
9793	1"	1.375"	50	500
9794	1 1/4"	1.734"	50	500
9795	1 1/2"	1.984"	25	250
9796	2"	2.469"	20	100



### Stud Bushings

Protects wire insulation from abrasion in metal studs. Bushing allows smooth wire pulling. Used for all pre-punched shaped holes.

UL File No. E11259



### Polypropylene

Catalog Number	Trade Size	Unit Qty.	Std. Pkg.
9882	---	50	500



NMCB-1



NMCB-2

### Cable Supports

NMCB-1 positions maximum of (6) 14/2 to 10/3 NM-B cables or (4) 14/2 to 12/2 AC or MC cables. Also suitable for use with low-voltage cabling to 3/8" diameter. Furnished with (2) #8 screws for use on wood or steel stud. Complies with NEC Articles 300.4(D) and 320.23(B). Patented.

NMCB-2 is provided with a nail for use on wood studs or 3/4" thick furring strips to position nonmetallic sheath cable. Capable of positioning a single 14/2 to 10/3 NM cable or two 14/2 NM cables in each of three rectangular slots. May also be used with low-voltage cable. Low-profile design and unique self-locking fingers prevent accidental removal of cables. Grooved nail for extra gripping with stud. Patented.

cJLus File No. E161206

### Polypropylene

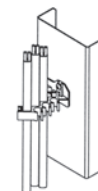
Catalog Number	Trade Size	Unit Qty.	Std. Pkg.
NMCB-1	---	25	100
NMCB-2	---	25	100



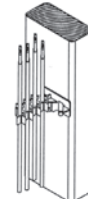
### Cable Stacker

For use on steel or wood studs to support nonmetallic sheath, communication, and data cables. Furnished with nail for wood stud. Use #8 x 1/2" self-tapping sheet metal screw for steel stud. Complies with NEC Articles 300-4(D) and 320.23(B). Patented.

cJLus File No. E161206



Metal Stud



Wood Stud

### Polypropylene

Catalog Number	Size	Unit Qty.	Std. Pkg.
NMWH-43	---	25	100

### CABLE RANGES:

#### Data / Communication Cable

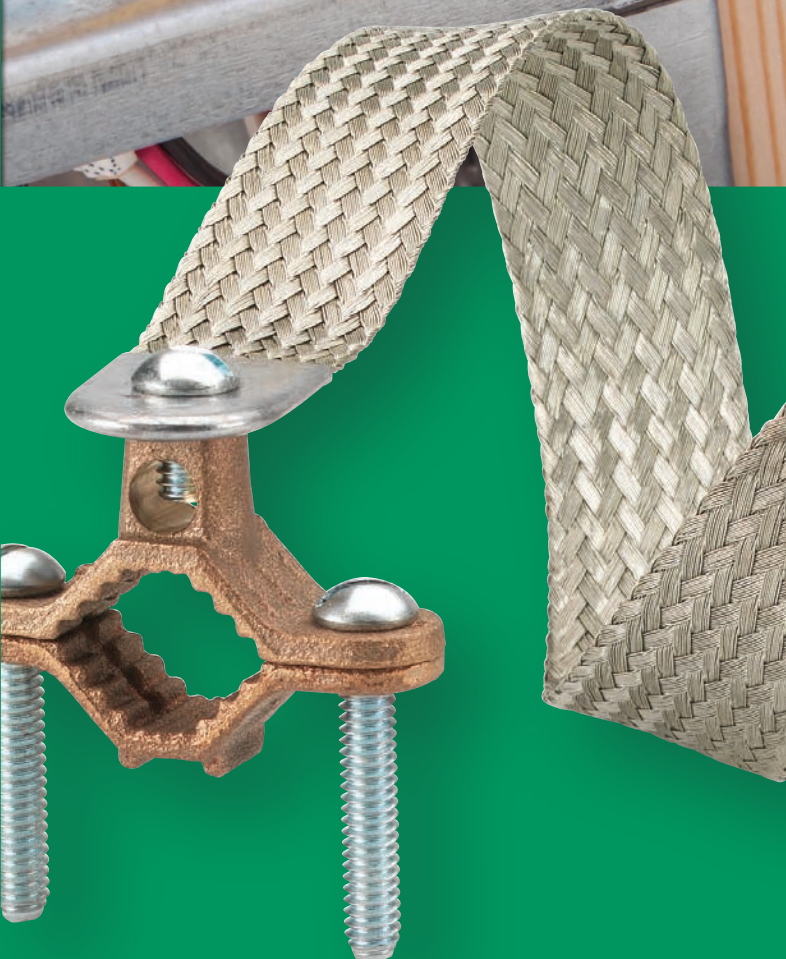
Oval Openings:	1 or 2	.06" to .20" diameter
	1	.20" to .32" diameter
Round Openings:	1	.16" to .50" diameter

#### Nonmetallic Sheath Cable

Oval Openings:	1 or 2	14/2 AWG
	1 or 2	12/2 AWG
	1	10/2 AWG
Round Openings:	1	14/3 AWG
	1	12/3 AWG
	1	10/3 AWG



# GROUNDING PRODUCTS



1312-B



1306-B, 1308-B,  
1308-DC



1307-B, 1307-B1,  
1309-B, 1309-DC,  
1315-B



1313-B

## Ground Clamps - Protective Type

For making connection with protective armor of 4, 6, or 8 AWG copper conductor and ground pipe or grounding electrode.

1308-DC also suitable for use with 1/2" or 3/4" copper water pipe.

UL File No. E20412: 1306-B, 1308-B, 1308-DC

CSA File No. LR39354: 1308-DC

## Brass with Steel Strap

Catalog Number	Ground Pipe Grounding Electrode Size	Unit Qty.	Std. Pkg.
1306-B	1/2" - 1"	25	100
1308-B	1/2" - 1"	25	100
1312-B	1 1/4" - 2"	---	20

## Zinc Die Cast with Steel Strap

Catalog Number	Ground Pipe Grounding Electrode Size	Unit Qty.	Std. Pkg.
1308-DC	1/2" - 1"	25	250

## Ground Clamps - Bare Wire Type

For making connection with No. 4, 6, or 8 AWG bare copper ground wire and 1/2" through 4" grounding pipe or grounding electrode.

1309-DC also suitable for use with 1/2" or 3/4" copper water pipe.

cULus File No. E20412: All, except 1307-B1

CSA File No. LR39354: 1309-DC

## Zinc Die Cast

Catalog Number	Ground Pipe Grounding Electrode Size	Unit Qty.	Std. Pkg.
1309-DC	1/2" - 1"	20	200

## Brass

Catalog Number	Ground Pipe Grounding Electrode Size	Unit Qty.	Std. Pkg.
1307-B	1/2" - 1"	50	200
1309-B	1/2" - 1"	20	200
1313-B	1 1/4" - 2"	---	20
1315-B	2 1/4" - 4"	2	10

## Brass with Brass Screws

Catalog Number	Ground Pipe Grounding Electrode Size	Unit Qty.	Std. Pkg.
1307-B1	1/2" - 1"	50	200

# RESIDENTIAL PRODUCTS

## GROUNDING PRODUCTS



### Ground Clamps - Threaded Hub Type

For making connection with No. 4, 6, or 8 AWG copper ground wire through threaded rigid conduit.

cULus File No. E20412

#### Brass

Catalog Number	Ground Pipe Grounding Electrode Size	Rigid Trade Size	Unit Qty.	Std. Pkg.
1325-B	1/2" - 1"	1/2"	---	50
1326-B	1 1/4" - 2"	1/2"	---	20
1328-B	2 1/2" - 4"	1/2"	---	10
1330-B	1/2" - 1"	3/4"	---	50
1331-B	1 1/4" - 2"	3/4"	---	20

#### Brass with Brass Screws

Catalog Number	Ground Pipe Grounding Electrode Size	Rigid Trade Size	Unit Qty.	Std. Pkg.
1325-B1	1/2" - 1"	1/2"	---	50

### Brass Ground Clamps With Strap and Hub

For making connection with No. 4, 6, or 8 AWG copper wire through threaded conduit. Ground wire terminated to set screw.

UL File No. E20412

#### Brass with Steel Screws

Catalog Number	Trade Size In Inches	Hub Size	Unit Qty.	Std. Pkg.
1325-BH	1/2, 3/4, 1	1/2"	---	25
1330-BH	1/2, 3/4, 1	3/4"	---	25
1345-BH	1/2, 3/4, 1	1"	---	25

### Solderless Lugs

Copper lugs are used with copper conductors and provide high conductivity with lower heat rise. Copper lugs are rated for direct burial. Aluminum lay-in lugs are suitable for use with copper or aluminum conductors.

UL File No. E155561

#### Aluminum

Catalog Number	CU Wire Range	Stud Size	Unit Qty.	Std. Pkg.
ALI-50	4 thru 14	#10	25	250
ALI-112	1/0 thru 14	1/4"	20	200
ALI-252	250 MCM thru 6	5/16"	10	100

#### Copper

Catalog Number	AWG KCM Wire Capacity	Stud Size	Unit Qty.	Std. Pkg.
CLI-10	4 thru 14	#10	20	200
CLI-20	4 thru 14	1/4"	20	200



### Solar Panel Grounding Connector

Designed to prevent galvanic reactions and enhance conductivity. The connector body has extruded serrations for breaking the anodized finish on photovoltaic modules and frames. The serrations in the wire binding break corrosion on the grounding wire, which means that no surface preparation is required for the PV module, the frame or the ground wire. The unique clamp-on design means no mounting holes are required. The connector simply clamps onto the frame of the solar panel. The unit is UL 467 Listed and accommodates aluminum or copper #4 to 14 AWG. The connectors feature stainless-steel hardware.

UL File No. E20412

#### Aluminum with Stainless Steel Hardware

Catalog Number	AWG Wire Capacity	Unit Qty.	Std. Pkg.
ALI-SLR	#4 - 14	25	250

### Bonding Jumper Assembly

Use Bonding Jumper Assembly to comply with Article 250 of the National Electrical Code. Suitable for use on EMT, rigid conduit, or copper water pipe. Assembly features bronze ground clamps and copper bonding strip.

cULus File No. E20412

#### Bronze

Catalog Number	Conduit Trade Size	Unit Qty.	Std. Pkg.
BJ-100	1/2" thru 1"	1	10
BJ-200	1 1/4" thru 2"	1	10

### Ground Clamps - Direct Burial Type

For making connection with No. 4, 6, or 8 AWG copper wire and 1/2" through 1" ground pipe or grounding electrode, or 3/8" thru 3/4" rebar. DB-1308 protective type for bare or armored copper ground wire.

DB-1309 for bare ground only.

All materials contain minimum of 80% copper.

cULus File No. E20412

Clamps meet both UL and NEC requirements for burial in earth or embedment in concrete.

#### Bronze

Catalog Number	Ground Pipe Grounding Electrode Size	Unit Qty.	Std. Pkg.
DB-1308	1/2" - 1"	25	100
DB-1309	1/2" - 1"	20	200



ALI Series



CLI Series



DB-1308



DB-1309



## GROUNDING PRODUCTS



### Mighty-Bond® Intersystem Bonding Bridge

Intersystem Bonding Bridge used inside or outside of an enclosure or panel board. 3-Equipment bonding terminations. Meets the requirement of NEC Article 250.94. Patented.

UL File No. E20412

#### Brass with Stainless Steel Hardware

Catalog Number	Trade Size	AWG Wire Capacity	Unit Qty.	Std. Pkg.
IGB-050	1/2"	#14 - 4	25	100
IGB-075	3/4"	#14 - 4	25	100



### Mighty-Bond® Intersystem Ground Rod Bridge Clamp

Intersystem Ground Rod Bridge Clamp used as an Intersystem bonding means by utilizing 4-terminal points for connecting communication systems to the same electrical grounding electrode/rod. Listed for 1/2" and 5/8" ground rods. Meets the requirement of NEC Article 250.94. Patented.

UL File No. E20412

#### Brass with Stainless Steel Hardware

Catalog Number	Trade Size	AWG Wire Capacity	Unit Qty.	Std. Pkg.
IGBC-063	1/2"	#14 - 4	25	100



### Grounding Rod Clamps - Direct Burial Type

For terminating bare copper conductor to ground rod. Conductor range #10 solid to #2 stranded. Clamps meet both UL and NEC requirements for burial in earth or embedment in concrete.

UL File No. E20412

#### Bronze

Catalog Number	Ground Pipe Grounding Electrode Size	Unit Qty.	Std. Pkg.
GRC-50	1/2"	100	400
GRC-63	5/8"	50	200
GRC-75	3/4"	50	200



### Intersystem Bonding Bridge

For installation on dwelling wall. For #6 to #2 AWG grounding electrode conductors and #14 to #4 AWG bonding conductors. Meets NEC Article 250.94.

UL File No. E20412

Catalog Number	Unit Qty.	Std. Pkg.
IGB-WM	5	50



### Mighty-Bond® Enclosure Grounding Connectors

Low cost and easy to use connector for securing grounding conductors at the enclosure in accordance with National Electrical Code (NEC) Article 250.8. Selection of conductor size to be made per NEC Article 250.66. Suitable for service entrance grounding. Product advantages include:

- Precision machined brass body with zinc die cast locknut and stainless steel set screw
- Professional installation appearance
- Serrated locknut removes residual paint from box
- Tamper Resistant as locknut and set screw are mounted inside the box
- Low profile flange on outside of box clearly marked with application guideline for ease in AHJ inspection
- UL listed for grounding per UL467 Patent Pending.

UL File No. E20412

#### Brass

Catalog Number	Trade Size	AWG Wire Capacity	Unit Qty.	Std. Pkg.
MC-050	1/2"	Copper: #8 - #2 Solid & Stranded Aluminum: #6 - #2 Stranded	25	100
MC-075	3/4"	Copper: #4 - #2 Solid, #4 - 3/0 Stranded Aluminum: #2 - 3/0 Stranded	25	100
MC-100	1"	Copper: 1/0 to 250 MCM Stranded Aluminum: 3/0 to 4/0 Compact Stranded	10	40



### Mighty-Bond® Enclosure Grounding Couplings

Low cost and easy to use coupling for use with rigid conduit and for securing grounding conductors at the enclosure in accordance with National Electrical Code (NEC) article 250.8. Selection of conductor size to be made per NEC Article 250.66. Suitable for service entrance grounding. Product advantages include:

- Precision machined brass body with zinc die cast locknut and stainless steel set screw
- Professional installation
- Serrated locknut removes residual paint from box
- Use with rigid metallic or PVC rigid conduit
- Low profile flange on inside of box clearly marked with application guideline for ease in AHJ inspection
- UL listed for grounding per UL467

Patent Pending.

UL File No. E20412

#### Brass

Catalog Number	Trade Size	AWG Wire Capacity	Unit Qty.	Std. Pkg.
MCC-050	1/2"	Copper: #8 - #2 Solid & Stranded Aluminum: #6 - #2 Stranded	25	100
MCC-075	3/4"	Copper: #4 - #2 Solid, #4 - 3/0 Stranded Aluminum: #2 - 3/0 Stranded	25	100
MCC-100	1"	Copper: 1/0 to 250 MCM Stranded Aluminum: 3/0 to 4/0 Compact Stranded	10	40



MCH-075



MCH-100

### Mighty-Bond® Raintight Grounding and Bonding Hubs

Bridgeport Fittings Raintight Grounding and Bonding Hubs provide a listed method of bonding between ground electrode conductors (GEC), grounded conductors, bonding jumpers, and boxes, devices or enclosures.

The MCH is listed for use in wet locations. When connected to rigid metal conduit, the MCH will also function as a raceway bonding hub, yoke or choke. Setting the conductor set screw bonds the MCH to the raceway, the bonding or grounding conductor, and to the enclosure without the need for an external lug. Note: Not for use in concentric knockouts.

ETL Listed

#### Brass

Catalog Number	Trade Size	Conductor Range	Max O.D.	Unit Qty.	Std. Pkg.
MCH-075	3/4"	#6 to 4/0 AL/CU	.550	10	40
MCH-100	1"	#2 to 350 MCM AL/CU	.720	1	10



### Mighty-Bond® Intersystem Bonding Bridge with Enclosure Grounding Coupling Kit

Intersystem Bonding Bridge with Enclosure Grounding Coupling is used for securing and bonding ground electrode conductors to the enclosure in accordance with the National Electrical Code (NEC) Article 250. The MBG-050 and MBG-075 are also designed to connect the raceway of the ground electrode conductor to the enclosure while providing three accessible intersystem bonding termination points. Saves installation time! Patented.

UL File No. E20412

#### Brass with Stainless Steel Hardware

Catalog Number	Trade Size	AWG Wire Capacity	Unit Qty.	Std. Pkg.
MBG-050	1/2"	Copper: #8 - #2 Solid & Stranded Aluminum: #6 - #2 Stranded	10	50
MBG-075	3/4"	Copper: #4 - #2 Solid, #4 - 3/0 Stranded Aluminum: #2 - 3/0 Stranded	10	50



RB-16



RB-17

### Rebar Ground Clamps - Direct Burial Type

For making connection with #10 AWG solid to #2 AWG stranded copper wire to 1/2" to 1" ground water pipe or 3/8" to 1" rebar. All materials contain minimum of 80% copper.

UL File No. E20412

Clamps meet both UL and NEC requirements for burial in earth or embedment in concrete.

#### Bronze

Catalog Number	Ground Pipe	Rebar	Unit Qty.	Std. Pkg.
RB-16	1/2" - 1"	3/8" - 1"	20	200
RB-17	1/2" - 1"	3/8" - 1"	20	200



### Mighty-Bond® Direct Burial Single Bolt Grounding Clamps

Designed for the grounding and bonding of electrical and plumbing systems. The SDB series is constructed of bronze and assembled with stainless steel hardware and is available in three distinct styles: lay-in lug, copper lug and enclosed style. The SDB series is listed for attachment to 1/2" through 1" in diameter EMT and rigid conduit raceways, and steel and copper water piping systems. Patent Pending.

cULus File No. E20412

#### Brass

Catalog Number	Lug Type	Conductor Range	Unit Qty.	Std. Pkg.
SDB-1300B	Copper	#4 - #14 AWG Copper Only	20	100
SDB-1301B	Lay-in lug	#2 - #10 AWG Copper Only	20	100
SDB-1302B	Closed Lug	#2 - #10 AWG Copper Only	20	100



# STRAPS, CLAMPS AND HANGERS



## Switch Box Supports

To support switch box in wallboard; installed in pairs.

### Steel

Catalog Number	Unit Qty.	Std. Pkg.
722	100	1000



## One Hole Service Entrance Straps

To support oval service entrance cable, types SE and SEU to mounting surface.

### Zinc Plated Steel

Catalog Number	SE / SEU Cable Size	Unit Qty.	Std. Pkg.
881-SE	#3, #8, #6, #4	100	1000
882-SE	#3, #3, #2	100	1000
883-SE	#3, #1, #0, #1/0, #2/0	50	500
884-SE	#3/0, #4/0	50	500



## Rigid Nail Straps

Used to secure rigid conduit and IMC to wood.

### Zinc Plated Steel

Catalog Number	Trade Size	Unit Qty.	Std. Pkg.
901-NS	1/2"	100	1000
902-NS	3/4"	100	1000
903-NS	1"	100	1000



## EMT Nail Straps

Nail-type strap to support EMT to mounting surface.

### Zinc Plated Steel

Catalog Number	Trade Size	Unit Qty.	Std. Pkg.
920-NS	1/2"	100	1000
921-NS	3/4"	100	1000
922-NS	1"	100	1000



## Aluminum – Service Entrance Cable One Hole Straps

Used to support oval service entrance cable to mounting surface.

### Aluminum

Catalog Number	SE / SEU Cable Size	Unit Qty.	Std. Pkg.
933	3 - #2 to #3	---	200
934	3 - #1/0	---	200
935	3 - #2/0	---	100
936	3 - 3/0 to #4/0	---	100

# RESIDENTIAL PRODUCTS

## STRAPS, CLAMPS AND HANGERS



### Two Hole Service Entrance Straps

To support oval service entrance cable, types SE and SEU to mounting surface.

#### Zinc Plated Steel

Catalog Number	SE / SEU Cable Size	Unit Qty.	Std. Pkg.
1881-SE	3-#8, #6, #4	100	1000
1882-SE	3-#3, #2	50	500
1883-SE	3-#1, #0, #1/0, #2/0	50	500
1884-SE	3-#3/0, #4/0	50	500



### Mighty-Hold® Universal Clamp Straps

One piece clamp back and strap secures EMT, Rigid, IMC, Liquid Tight Metallic and Nonmetallic, FMC, AC/MC and PVC. Meets applicable NEC requirements.

The UCS-5075 secures 1/2" and 3/4" EMT, Rigid, IMC, Metallic Liquid Tight, Nonmetallic Liquid Tight, FMC, and Schedule 40 and Schedule 80 PVC conduit, as well as .710" Ø to 1.10" Ø steel and aluminum AC/MC cable.

The UCS-75100 secures 3/4" and 1" EMT, Rigid, IMC, Metallic Liquid Tight, Nonmetallic Liquid Tight, FMC, and Schedule 40 and Schedule 80 PVC conduit, as well as .925" Ø to 1.32" Ø steel and aluminum AC/MC cable.

cULus File No. E161206

#### Zinc Plated Steel

Catalog Number	Trade Size	Unit Qty.	Std. Pkg.
UCS-5075	1/2" - 3/4"	25	100
UCS-75100	3/4" - 1"	25	100



### Two Hole Rigid Pipe Straps

Used to secure rigid conduit or IMC.

CSA File No. LR39354

#### Zinc Plated Steel

Catalog Number	Trade Size	Unit Qty.	Std. Pkg.
1901	1/2"	250	2500
1902	3/4"	150	1500
1903	1"	100	1000
1904	1 1/4"	50	500
1905	1 1/2"	50	500
1906	2"	25	250



### Tubing and Coaxial Straps

Used to support tubing and coaxial cable to mounting surface.



#### Zinc Plated Steel

Catalog Number	Trade Size	Unit Qty.	Std. Pkg.
CC-25	1/4"	100	1000
CC-31	5/16"	100	1000
CC-37	3/8"	100	1000



## THE BRIDGEPORT DIFFERENCE FOR STRAPS, CLAMPS AND HANGERS





# SERVICE ENTRANCE



## Two Screw Strap Type Connectors

For connecting round or oval service cable to box or enclosure.

UL File No. E15123

CSA File No. LR39354: 660-DC2, 670-DC2

### Zinc Die Cast - Round Cable



Round Cable

Catalog Number	K.O. Size	Round Service Cable Range		Unit Qty.	Std. Pkg.
		Min.	Max.		
660-DC2	3/4"	.680"	.800"	25	250
662-DC2	1"	.850"	1.000"	10	100
664-DC2	1 1/4"	1.090"	1.300"	10	100
665-DC2	1 1/2"	1.187"	1.490"	---	25
666-DC2	2"	1.750"	1.950"	---	25



Oval Cable

### Zinc Die Cast - Oval Cable

Catalog Number	K.O. Size	Oval Service Cable Range		Unit Qty.	Std. Pkg.
		Height	Width		
670-DC2	3/4"	.437"	.625"	25	250
672-DC2	1"	.500"	.750"	10	100
674-DC2	1 1/4"	.625"	1.062"	10	100
675-DC2	1 1/2"	.750"	1.250"	---	25
676-DC2	2"	1.062"	1.625"	---	25



## UF Connectors

Connector provides watertight seal around underground feeder cable. Tapered (NPT) threads.

UL File No. E11698

### Zinc Die Cast

Catalog Number	Trade Size	Cable Size	Unit Qty.	Std. Pkg.
761-UF	1/2"	14/2, 12/2, 10/2 (.250" x .500")	25	100
762-UF	3/4"	14/3, 12/3, 10/3 (.260" x .720")	10	50

# RESIDENTIAL PRODUCTS

## SERVICE ENTRANCE



### Watertight Service Entrance Cable Connectors

Compression type connector which provides watertight seal around service entrance cable.

#### Zinc Die Cast

Catalog Number	K.O. Size	Grommet Opening Size	Unit Qty.	Std. Pkg.
763-4	1"	.520" x .840"	10	100
763-6	1"	.440" x .700"	10	100
763-8	1"	.406" x .688"	10	100
764-2	1 1/4"	.600" x 1.000"	5	50
764-2N	1 1/4"	.665" x 1.094"	5	50
764-3	1 1/4"	.560" x .950"	5	50
765-2	1 1/2"	.865" x 1.325"	---	25
765-3	1 1/2"	.875" x 1.375"	---	25
766-2	2"	.860" x 1.340"	---	10
766-3	2"	.870" x 1.370"	---	10
766-4	2"	.900" x 1.500"	---	10
766-4N	2"	1.100" x 1.750"	---	10

### One & Two Hole Service Entrance Straps

To support oval service entrance cable, types SE and SEU to mounting surface.



881-SE thru 884-SE

#### Zinc Plated Steel - One Hole Straps

Catalog Number	SE / SEU Cable Size	Unit Qty.	Std. Pkg.
881-SE	#3, #8, #6, #4	100	1000
882-SE	#3, #3, #2	100	1000
883-SE	#3, #1, #0, #1/0, #2/0	50	500
884-SE	#3/0, #4/0	50	500



1881-SE thru 1884-SE

#### Zinc Plated Steel - Two Hole Straps

Catalog Number	SE / SEU Cable Size	Unit Qty.	Std. Pkg.
1881-SE	3 - #8, #6, #4	100	1000
1882-SE	3 - #3, #2	50	500
1883-SE	3 - #1, #0, #1/0, #2/0	50	500
1884-SE	3 - #3/0, #4/0	50	500



### Aluminum - Service Entrance Cable One Hole Straps

Used to support oval service entrance cable to mounting service.

#### Aluminum

Catalog Number	SE / SEU Cable Size	Unit Qty.	Std. Pkg.
933	3 - #2 to #3	---	200
934	3 - #1/0	---	200
935	3 - #2/0	---	100
936	3 - 3/0 to #4/0	---	100



### Sill Plates

When used with sealing compound, sill plates prevent water from entering structure.

### Aluminum With Screws and Sealing Compound

Catalog Number	Service Cable Size	Unit Qty.	Std. Pkg.
938-C	3 - #2	10	100
939-C	3 - 1/0 to 2/0	---	5
940-C	3 - 3/0 to 4/0	---	5

### PVC Without Screws and Sealing Compound

Catalog Number	Service Cable Size	Unit Qty.	Std. Pkg.
938-PVC	3 - #4 to 3 - #0	10	100



### Service Entrance LB

Allows access to the interior of a conduit system for inspection, pulling and maintenance. Mounts flush against structure, raintight.

UL File No. E11077

#### Aluminum

Catalog Number	Trade Size	Unit Qty.	Std. Pkg.
1025	1/2"	5	50
1026	3/4"	5	50
1027	1"	---	20
1028	1 1/4"	---	10
1029	1 1/2"	---	5
1030	2"	---	4
1028-XL	1 1/4"	---	10
1030-XL	2"	1	6



## SERVICE ENTRANCE



### Entrance Caps – Threaded Type

Threaded-type entrance cap for rigid conduit or IMC.

UL File No. E11259

#### Aluminum

Catalog Number	Trade Size	Unit Qty.	Std. Pkg.
1201	1/2"	5	50
1202	3/4"	5	50
1203	1"	2	20
1204	1 1/4"	---	10
1205	1 1/2"	---	5
1206	2"	---	5

#### Entrance Cap Hole Sizes:

- 1201: 4 holes 5/16" dia.  
 1202: 2 holes 3/8" dia., 3 holes 7/16" dia.  
 1203: 2 holes 7/16" dia., 3 holes 5/8" dia.  
 1204: 2 holes 7/16" dia., 3 holes 5/8" dia.  
 1205: 1 hole 7/16" dia., 2 holes 5/8" dia., 3 holes 3/4" dia.  
 1206: 1 hole 9/16" dia., 2 holes 3/4" dia., 3 holes 1" dia.



### Entrance Caps For Oval Service Entrance Cable

Entrance cap for use with oval service entrance cable.

UL File No. E15123

#### Zinc Die Cast

Catalog Number	Oval Service Cable Size	Unit Qty.	Std. Pkg.
1220	3 - #2	5	50

#### Aluminum

Catalog Number	Oval Service Cable Size	Unit Qty.	Std. Pkg.
1221	3 - #1/0 thru 3 - #4/0	---	10

#### Entrance Cap Hole Sizes:

- 1220: 2 holes 9/16" dia.  
 1221: 2 holes 25/32" dia.



### Entrance Caps For Oval Service Entrance Cable

Electrical grade rigid PVC entrance cap with galvanized steel mounting bracket and strap for use with oval service entrance cable.

UL File No. E15123

#### PVC

Catalog Number	Oval Service Cable Size	Unit Qty.	Std. Pkg.
1240-PVC	3 - #8, 6, 4, 2	5	50
1241-PVC	3 - #1/0, 2/0	---	10
1242-PVC	3 - #3/0, 4/0	---	10



### Entrance Caps – Mast Type

Slip-fit screw-type entrance cap for rigid conduit or IMC.

UL File No. E11259

#### Aluminum / Phenolic Insulator

Catalog Number	Size	Unit Qty.	Std. Pkg.
1246-MT	2" Conduit, 1 1/4" Cap	---	10
1257-MT	2 1/2" Conduit, 2" Cap	---	5

#### Entrance Cap Hole Sizes:

- 1246-MT: 2 holes 7/16" dia., 3 holes 5/8" dia.  
 1257-MT: 1 hole 9/16" dia., 2 holes 3/4" dia., 3 holes 1" dia.



### Entrance Caps – Clamp-On Type

Clamp-type entrance cap for rigid conduit and IMC.

UL File No. E11259

#### Aluminum

Catalog Number	Trade Size	Unit Qty.	Std. Pkg.
1251	1/2"	5	50
1252	3/4"	5	50
1253	1"	---	20
1254	1 1/4"	---	10
1255	1 1/2"	---	5
1256	2"	---	5

#### Entrance Cap Hole Sizes:

- 1251: 4 holes 5/16" dia.  
 1252: 2 holes 3/8" dia., 3 holes 7/16" dia.  
 1253: 2 holes 7/16" dia., 3 holes 1/2" dia.  
 1254: 2 holes 7/16" dia., 3 holes 5/8" dia.  
 1255: 1 hole 7/16" dia., 2 holes 5/8" dia., 3 holes 3/4" dia.  
 1256: 1 hole 9/16" dia., 2 holes 3/4" dia., 3 holes 1" dia.

# RESIDENTIAL PRODUCTS

## SERVICE ENTRANCE



### PVC Entrance Heads

PVC entrance heads for mounting on PVC, rigid, IMC or EMT. Removable EMT adapter sleeve and no-turn square nut allow for fast installation.

UL File No. E9391

CSA File No. LR74878

### PVC

Catalog Number	Trade Size	Unit Qty.	Std. Pkg.
1251-PVC	1/2"	5	50
1252-PVC	3/4"	5	50
1253-PVC	1"	---	20
1254-PVC	1 1/4"	---	10
1255-PVC	1 1/2"	---	5
1256-PVC	2"	---	5



### Entrance Caps – Set Screw Type

Set screw type entrance cap for rigid conduit or IMC.

1253-S thru 1255-S - comes with one screw.

1256-S - comes with two screws.

UL File No. E11259

### Aluminum / Phenolic Insulator

Catalog Number	Trade Size	Unit Qty.	Std. Pkg.
1253-S	1"	---	20
1254-S	1 1/4"	---	10
1255-S	1 1/2"	---	5
1256-S	2"	---	5

### Entrance Cap Hole Sizes:

1253-S: 2 holes 7/16" dia., 3 holes 1/2" dia.

1254-S: 2 holes 7/16" dia., 3 holes 5/8" dia.

1255-S: 1 hole 7/16" dia., 2 holes 5/8" dia., 3 holes 3/4" dia.

1256-S: 1 hole 9/16" dia., 2 holes 3/4" dia., 3 holes 1" dia.



### Mast Kits

Service entrance mast kits provide an assortment of mast components for installing overhead service drops. Use for both residential and commercial buildings that utilize conduit.

Catalog Number	Description Contents	Unit Qty.	Std. Pkg.
MK-10020	2" Service Entrance Kit (125-150-200 Amp) <ul style="list-style-type: none"> <li>• Service Head (Cat. 1256)</li> <li>• Roof Flashing (Cat. RF-200)</li> <li>• Porcelain Wire Holder (Cat. MWH-1)</li> <li>• 2" Rigid Pipe Strap (2 pcs.) (Cat 1906)</li> </ul>	---	1
MK-20025	2-1/2" Service Entrance Kit (125-150-200 Amp) <ul style="list-style-type: none"> <li>• Service Head (Cat. 1257-MT)</li> <li>• Roof Flashing (Cat. RF-250)</li> <li>• Conduit Support (2 pcs.)</li> <li>• Porcelain Wire Holder (Cat MWH-1)</li> </ul>	---	1
MK-20025R	2-1/2" Service Entrance Kit (125-150-200 Amp) <ul style="list-style-type: none"> <li>• Service Head (Cat. 1257-MT)</li> <li>• Porcelain Wire Holder (Cat. MWH-1)</li> <li>• Roof Flashing (Cat. RF-250)</li> <li>• Conduit Support (2 pcs.)</li> <li>• Bottom Reducer</li> </ul>	---	1



## SERVICE ENTRANCE



### Mogul Conduit Bodies

Allows larger access to the inside of a raceway for wire pulling. Raintight.

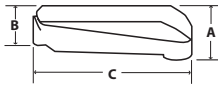
UL File No. E11077

cULus File No. E11077

#### Aluminum

Catalog Number	Trade Size	Unit Qty.	Std. Pkg.
MLB-44	1 1/4"	---	5
MLB-45	1 1/2"	---	2
MLB-46	2"	---	2

	Dim A	Dim B	Dim C
	3 1/2"	3"	9 1/2"
	5 1/8"	4"	14 1/2"
	5 1/8"	4"	14 1/2"



RF-125 thru RF-200

### Roof Flashings

Galvanized – for use with galvanized, plastic, or cast iron electrical service mast. Fits flats to 40°. Neoprene – for use with copper, cast iron, galvanized, or plastic pipe. Fits up to 45° angle, not recommended for hot-mopped or built-up roofs.



RFN-125 & RFN-200

#### Galvanized

Catalog Number	Trade Size	Unit Qty.	Std. Pkg.
RF-125	1 1/4"	---	25
RF-150	1 1/2"	---	25
RF-200	2"	---	25

#### Neoprene

Catalog Number	Trade Size	Unit Qty.	Std. Pkg.
RFN-125	1 1/4" - 1 1/2"	---	12
RFN-200	2"	---	12



RWH-1



MWH-1

### Porcelain Wire Holders

RWH-1 - Reinforced-type wire holder with 3/8" lag screw 2 1/2" long. MWH-1 - Clamp-on adjustable wire holder for 1 1/4", 1 1/2", 2", 2 1/2" and 3" service entrance mast.

#### Porcelain

Catalog Number	Trade Size	Unit Qty.	Std. Pkg.
RWH-1	---	---	50
MWH-1	1 1/4" - 3"	---	20



### Wedge Grip Clamps

For reducing strain and sagging of overhead type ACSR service entrance cables. Place service entrance cable into shell, slide wedge forward and secure in place. Hook stainless steel bail onto lag, or similar mounting device, on building structure. Maximum load is 1,000 lbs.

#### Aluminum

Catalog Number	Wire Size ACSR	Unit Qty.	Std. Pkg.
WGC-1	6 - 4	25	100
WGC-2	4 - 1/0	10	40
WGC-3	2/0 - 4/0	10	40



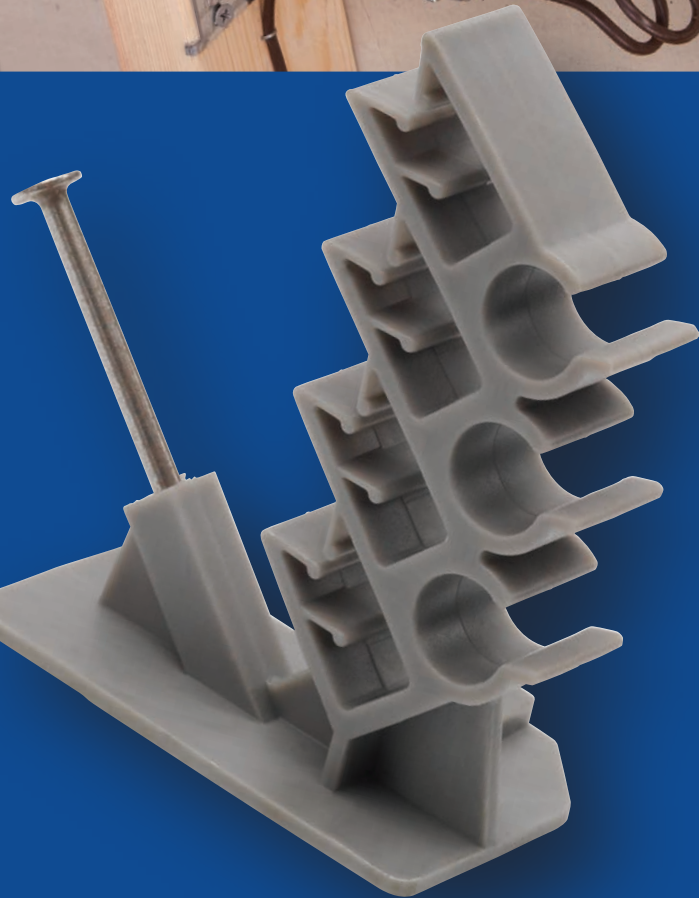
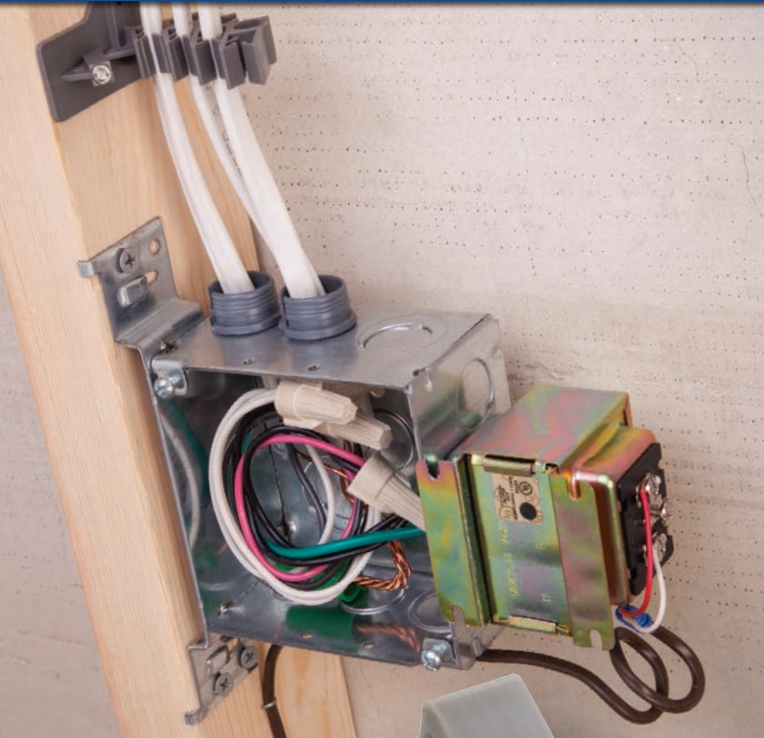
### Service Entrance Kits

Service entrance kits provide an assortment of components for electrical service installation.

Catalog Number	Description	Unit Qty.	Std. Pkg.
SE-KIT100	100 Amp SE Cable Kit <ul style="list-style-type: none"> <li>• Service Head (1240-PVC)</li> <li>• Water Tight Connector (764-2N)</li> <li>• Duct Seal (DS-100)</li> <li>• Sill Plate (938-C)</li> <li>• (2) SE Connectors (674-DC2)</li> <li>• (12) 1 Hole Straps (882-SE)</li> <li>• (2) Ground Clamps (1308-DC)</li> <li>• (2) Ground Rod Clamps (GRC-63)</li> </ul>	---	1
SE-KIT200	200 Amp SE Cable Kit <ul style="list-style-type: none"> <li>• Service Head (1242)</li> <li>• Water Tight Connector (766-3)</li> <li>• Duct Seal (DS-100)</li> <li>• Sill Plate (940-C)</li> <li>• (2) SE Connectors (676-DC2)</li> <li>• (10) 2 Hole Straps (1884-SE)</li> <li>• (2) Ground Clamps (1308-DC)</li> <li>• (2) Ground Rod Clamps (GRC-63)</li> </ul>	---	1



## VOICE / DATA / VIDEO



### Insulator Support Beam Clamps

Single screw beam clamp insulator support with two threaded holes.

cULus File No. E161206: 951 thru 954



951



951-S

### Malleable Iron

Catalog Number	Size	Tap Size (UNC)	Approx. Jaw Opening	Max. Load Lbs.	Unit Qty.	Std. Pkg.
951	1"	1/4-20	3/4"	125	25	100
952	1 1/2"	5/16-18	1 1/16"	300	---	50
953	2"	3/8-16	7/8"	300	---	50

### Steel

Catalog Number	Size	Tap Size (UNC)	Approx. Jaw Opening	Max. Load Lbs.	Unit Qty.	Std. Pkg.
951-S	1"	1/4-20	3/4"	75	25	100
953-S	2"	3/8-16	7/8"	200	---	50

### Knockout Insulating Bushings

Converts metallic box rough-edged holes to smooth insulated holes for protection of electrical, voice, data and video cables.

CSA File No. LR24719

UL File No. E240912



### Plastic Rated - 105°C

Catalog Number	K.O.	K.O. Dia.	Unit Qty.	Std. Pkg.
9791	1/2"	.875"	100	1000
9792	3/4"	1.109"	100	1000
9793	1"	1.375"	50	500
9794	1 1/4"	1.734"	50	500
9795	1 1/2"	1.984"	25	250
9796	2"	2.469"	20	100

### Stud Bushings

Protects wire insulation from abrasion in metal studs. Bushing allows smooth wire pulling. Used for all pre-punched shaped holes.

UL File No. E11259



### Polypropylene

Catalog Number	Trade Size	Unit Qty.	Std. Pkg.
9882	---	50	500





BR

### Bridle Rings

Steel bridle rings provide support for voice, data, or video cables. Open loop end allows easy insertion of cables. Machine thread style has 1/4-20 thread for use with beam clamps or other clamping devices. Wood-style rings are threaded for easy assembly into 1/8" dia. pre-drilled hole.

UL File No. E161206 (BRI-150, BRI-200, BRWI-150 & BRWI-200)



BRI

### Zinc Plated Threaded Bridle Rings

Catalog Number	Trade Size	Unit Qty.	Std. Pkg.
BR-150	1 1/2"	---	100
BR-200	2"	---	100



BRW

### Zinc Plated Threaded Bridle Rings / Plastic Insulator

Catalog Number	Trade Size	Unit Qty.	Std. Pkg.
BRI-150	1 1/2"	---	50
BRI-200	2"	---	50



BRWI

### Zinc Plated Bridle Rings For Wood

Catalog Number	Trade Size	Unit Qty.	Std. Pkg.
BRW-150	1 1/2"	---	100
BRW-200	2"	---	100

### Zinc Plated Bridle Rings For Wood / Plastic Insulator

Catalog Number	Trade Size	Unit Qty.	Std. Pkg.
BRWI-150	1 1/2"	---	50
BRWI-200	2"	---	50



BXE-100

### Electrical Box Extender / Insulator

For use with most metallic or nonmetallic electrical boxes to extend box face. Simply slide non-conductive extender into box to correct setbacks up to 1". May also be used as an insulating barrier between metallic box and device. Extender / Insulator does not require trimming and is completely hidden by faceplate. Complies with NEC Article 314.20. Patented.

UL File No. E216710

Available in single gang BXE-100, duplex BXE-200 or round BXE-300 configurations.



BXE-300

### PVC

Catalog Number	Unit Qty.	Std. Pkg.
BXE-100	25	100
BXE-200	---	25
BXE-300	---	25



### Tubing and Coaxial Straps

To support tubing and coaxial cable to mounting surface.

### Zinc Plated Steel

Catalog Number	Trade Size	Unit Qty.	Std. Pkg.
CC-25	1/4"	100	1000
CC-31	5/16"	100	1000
CC-37	3/8"	100	1000



### Distribution Rings

For support of communication cables. May be mounted in horizontal or vertical position. Enclosed design; all rings have four mounting holes for #10 screws.

### Aluminum

Catalog Number	Trade Size	Unit Qty.	Std. Pkg.
DR-200	2"	10	40
DR-300	3"	10	20

### Communications / Data Plate Mounting Bracket (Old Work)



Eliminates need for outlet box. Provides mounting base for securing communication or data line face plates. Mounts standard low voltage outlets and plates (Class 2 only). Hardware included.

### Zinc Plated Steel

Catalog Number	Unit Qty.	Std. Pkg.
LVB-1	10	100



NMCB-1

### Cable Supports

Positions maximum of (6) 14/2 to 10/3 NM-B cables or (4) 14/2 to 12/2 AC or MC cables. Also suitable for use with low voltage cabling to 3/8" diameter. Furnished with (2) #8 screws for use on wood or steel stud. Complies with NEC Articles 300.4(D) and 320.23(B). Patented.

cULus File No. E161206



NMCB-2

NMCB-2 is provided with a nail for use on wood studs or 3/4" thick furring strips to position nonmetallic sheath cable. Capable of positioning a single 14/2 to 10/3 NM cable or two 14/2 NM cables in each of three rectangular slots. May also be used with low-voltage cable. Low-profile design and unique self-locking fingers prevent accidental removal of cables. Grooved nail for extra gripping with stud. Patented.

cULus File No. E161206

### Polypropylene

Catalog Number	Trade Size	Unit Qty.	Std. Pkg.
NMCB-1	---	25	100
NMCB-2	---	25	100

# RESIDENTIAL PRODUCTS

VOICE / DATA / VIDEO



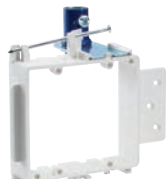
NMLV-100F



NMLV-200F



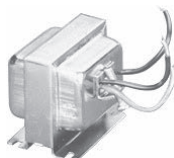
NMLV-100B



NMLV-200B



T-601



T-602, T-603, T-604

## Low Voltage Device Holders for New Work

NMLV-100F and NMLV-200F used on 3/4" thick furring strips, 2" x 4" wood or steel stud. Provided with 2 nails for use on 2" x 4" wood stud. Use #6 flat head screws for steel stud or 3/4" thick furring strip.

NMLV-100B and NMLV-200B used on 2" x 4" wood or steel stud with 1/2" or 3/4" EMT. Provided with 2 nails for use on 2" x 4" wood stud. Use #6 flat head screws for steel stud. Steel bracket will accommodate 1/2" or 3/4" EMT connector. Patented.

UL File No. E11259

### PVC

Catalog Number	Trade Size	Unit Qty.	Std. Pkg.
NMLV-100B	Single Gang	5	50
NMLV-100F	Single Gang	10	100
NMLV-200B	Double Gang	5	50
NMLV-200F	Double Gang	5	50

## Class 2 Signaling Transformers

Low cost, highly reliable transformers that provide convenient low-voltage power for a variety of commercial, residential and industrial purposes. All primary leads are pre-stripped for quick connection. Units mount in a standard 1/2" (13mm) knockout or surface mount using the provided locknut or clamp. The T-601 uses a standard locknut. The T-602, T-603 and T-604 use an integral clamp. These transformers may be safely mounted in both plastic- and metal-back boxes.

The T-601 is ideal for doorbells, chimes and other light duty applications. The T-602, T-603 and T-604 offer higher power for longer wire runs.

UL Listed File No. E208949

CSA Certified

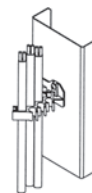
Catalog Number	Primary	Secondary	
		Volts	VA
T-601	120VAC	16	10
T-602	120VAC	8	10
		16	10
		24	20
		24	20
T-603	120VAC	8	20
		16	20
		24	30
		24	30
T-604	120VAC	24	40



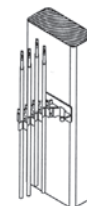
## Cable Stacker

For use on steel or wood studs to support nonmetallic sheath, communication, and data cables. Furnished with nail for wood stud. Use #8 x 1/2" self-tapping sheet metal screw for steel stud. Complies with NEC Articles 300-4(D) and 320.23(B). Patented.

cULus File No. E161206



Metal Stud



Wood Stud

## Polypropylene

Catalog Number	Size	Unit Qty.	Std. Pkg.
NMWH-43	---	25	100

### CABLE RANGES

#### Data / Communication Cable

Oval Openings:	1 or 2	.06" to .20" diameter
	1	.20" to .32" diameter
Round Openings:	1	.16" to .50" diameter

#### Nonmetallic Sheath Cable

Oval Openings:	1 or 2	14/2 AWG
	1 or 2	12/2 AWG
	1	10/2 AWG
Round Openings:	1	14/3 AWG
	1	12/3 AWG
	1	10/3 AWG

## Insulating Bushing

EMT bushing insulates telephone, computer, video and other low-voltage wiring from sharp edges of EMT. Complies with NEC Article 300-15(c).



## Polyethylene - 90°C

Catalog Number	Trade Size	Unit Qty.	Std. Pkg.
TWB-51	1/2"	100	1000
TWB-52	3/4"	50	500
TWB-53	1"	25	250
TWB-54	1 1/4"	25	250
TWB-55	1 1/2"	---	100
TWB-56	2"	---	50



# SPECIALTY PRODUCTS



## Jack Chain

Maximum safe load is 25 lbs.  
 Catalog 703 provided in convenient 300' bucket.

### Steel

Catalog Number	Size	Description	Std. Pkg.
701	#12	100' Spool	800'
703	#12	300' Bucket	300'



## "S" Hooks

Maximum safe load is 25 lbs.

### Steel

Catalog Number	Size	Unit Qty.	Std. Pkg.
705	1 1/4"	100	1000



## Safety Plates

Protects cable running through wooden studs from nails and screws.

UL File No. E161206

### Galvanized Steel

Catalog Number	Unit Qty.	Std. Pkg.
732-SP	100	500



## Mighty-Seal® Raintight Reducing Sealing Washers

Used when a concentric knockout breaks out larger than expected. Maintains NEMA 3R rating on listed enclosures. Includes one coated and one uncoated washer. Coated washer installs on the exterior of the box. Sunlight resistant. Patent Pending.

cULus File No. E11259

### Coated Galvanized Steel

Catalog Number	Trade Size	Unit Qty.	Std. Pkg.
1061-RT	3/4" - 1/2"	20	200
1062-RT	1" - 1/2"	20	200
1063-RT	1" - 3/4"	20	200
1065-RT	1 1/4" - 3/4"	20	200
1071-RT	2" - 1/2"	10	100

# RESIDENTIAL PRODUCTS

## SPECIALTY PRODUCTS



### Box Connectors

Used as a raceway between two boxes.

UL File No. E11259

CSA File No. LR39354

#### Zinc Die Cast

Catalog Number	Trade Size	Unit Qty.	Std. Pkg.
1191-DC2	1/2"	50	500



### Offset Nipples

Used to offset the axis of raceway 3/4" between enclosure runs.

cULus File No. E9391: 1520-DC thru 1525-DC

cETLus Listed: 1520-RT through 1522-RT

#### Zinc Die Cast

Catalog Number	Trade Size	Unit Qty.	Std. Pkg.
1520-DC	1/2"	20	200
1521-DC	3/4"	10	100
1522-DC	1"	5	50
1523-DC	1 1/4"	10	40
1524-DC	1 1/2"	10	40
1525-DC	2"	5	30

#### Zinc Die Cast / Raintight

Catalog Number	Trade Size	Unit Qty.	Std. Pkg.
1520-RT	1/2"	20	200
1521-RT	3/4"	10	100
1522-RT	1"	5	50



Steel

### Knockout Plugs

To cap unused knockout holes in box or enclosure.

#### Zinc Plated Steel

Catalog Number	Trade Size	Unit Qty.	Std. Pkg.
1691	1/2"	100	1000
1692	3/4"	100	1000
1693	1"	50	500
1694	1 1/4"	50	200
1695	1 1/2"	50	200
1696	2"	20	200



Plastic

#### Plastic

Catalog Number	Trade Size	Unit Qty.	Std. Pkg.
9891	1/2"	100	1000
9892	3/4"	100	1000
9893	1"	50	500
9894	1 1/4"	50	500
9895	1 1/2"	25	250
9896	2"	20	100



### Box Supports

Use to support FS box, outdoor lighting fixture, or similar devices per NEC Article 370-23 requirements. Tapered threads (NPT) provide raintight seal. Simply assemble box support onto the box or fixture and fasten to steel rigid conduit or water pipe driven into the ground.

cULus File No. E161206: BS-050

#### Zinc Die Cast

Catalog Number	Trade Size	Unit Qty.	Std. Pkg.
BS-050	1/2"	25	100
BS-075	3/4"	25	100



BXE-100



BXE-300

### Electrical Box Extender / Insulator

For use with most metallic or nonmetallic electrical boxes to extend box face. Simply slide non-conductive extender into box to correct setbacks up to 1". May also be used as an insulating barrier between metallic box and device. Extender / Insulator does not require trimming and is completely hidden by face-plate. Complies with NEC Article 314.20. Patented.

UL File No. E216710

Available in single gang BXE-100, duplex BXE-200 or round BXE-300 configurations.

#### PVC

Catalog Number	Unit Qty.	Std. Pkg.
BXE-100	25	100
BXE-200	---	25
BXE-300	---	25



### Firestop

A water-based, non-corrosive, non-toxic, odorless quality intumescent. The FS-1000 is rated 3000°F for 8 hours. Adheres to most construction materials, including ceramics, composites, masonry, metal, plastic and wood. Can be safely removed with soap and water prior to curing. Paintable and sandable. Refer to [www.bptfittings.com](http://www.bptfittings.com) for installation instructions. Classified by Underwriters Laboratories as a non-combustible product in compliance with zero flame and zero smoke index.

cULus File No. R25422

#### Intumescent

Catalog Number	Cartridge Size	Unit Qty.	Std. Pkg.
FS-1000	10.5 fluid ounces	1	12



## SPECIALTY PRODUCTS



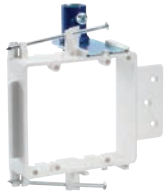
NMLV-100F



NMLV-100B



NMLV-200F



NMLV-200B



### Low Voltage Device Holders for New Work

NMLV-100F and NMLV-200F used on 3/4" thick furring strips, 2" x 4" wood or steel stud. Provided with 2 nails for use on 2" x 4" wood stud. Use #6 flat head screws for steel stud or 3/4" thick furring strip. NMLV-100B and NMLV-200B used on 2" x 4" wood or steel stud with 1/2" or 3/4" EMT. Provided with 2 nails for use on 2" x 4" wood stud. Use #6 flat head screws for steel stud. Steel bracket will accommodate 1/2" or 3/4" EMT connector. Patented.

UL File No. E11259

#### PVC

Catalog Number	Trade Size	Unit Qty.	Std. Pkg.
NMLV-100B	Single Gang	5	500
NMLV-100F	Single Gang	10	100
NMLV-200B	Double Gang	5	50
NMLV-200F	Double Gang	5	50

### Door Light Switches

All-purpose electric door switches for use anywhere that lights are turned on and off automatically by the opening and closing of a door. Units may be wired either normally open or normally closed. The units are shipped normally closed. The switch mounts using the 3" (76mm) on-center mounting holes.

Units may be used on sliding or on hinged doors. Typical applications include closet doors, walk-in refrigerators, vault and photo labs. Models available for standard or narrow construction; refer to www.bptfittings.com for dimensions.

UL Recognized Switch.

Catalog Number	Description	Finish
PB-301	Standard Door Light Switch	Painted Brass
PB-301N	Narrow Construction Door Light Switch	Painted Brass



SFS-75



SFR-75

### Swivel Fixture Hangers

Ball type swivel fixture covers for mounting pendant or fluorescent lighting fixtures to box. For lamps up to 50 lbs. maximum and 20° maximum swing from vertical. Tapped for use with 3/4" thread and furnished with 3/4" x 1/2" steel reducing bushing. Slotted cover holes for easy assembly to box. Malleable iron swivel, steel cover.

UL File No. E235970

#### 4" Square Box Cover

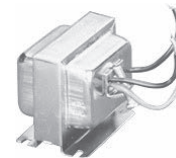
Catalog Number	Trade Size	Unit Qty.	Std. Pkg.
SFS-75	3/4"	1	10

#### 4" Round or Octagonal Box Cover

Catalog Number	Trade Size	Unit Qty.	Std. Pkg.
SFR-75	3/4"	1	10



T-601



T-602, T-603, T-604

### Class 2 Signaling Transformers

Low cost, highly reliable transformers that provide convenient low-voltage power for a variety of commercial, residential and industrial purposes. All primary leads are pre-stripped for quick connection. Units mount in a standard 1/2" (13mm) knockout or surface mount using the provided locknut or clamp. The T-601 uses a standard locknut. The T-602, T-603 and T-604 use an integral clamp. These transformers may be safely mounted in both plastic- and metal-back boxes.

The T-601 is ideal for doorbells, chimes and other light duty applications. The T-602, T-603 and T-604 offer higher power for longer wire runs.

UL Listed File No. E208949

CSA Certified

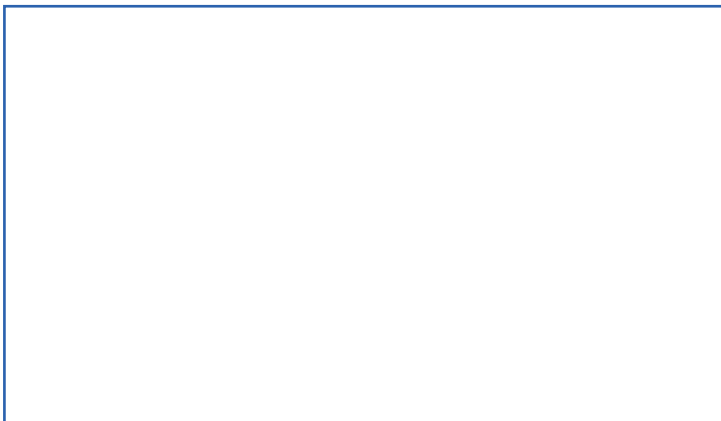
Catalog Number	Primary	Secondary	
		Volts	VA
T-601	120VAC	16	10
T-602	120VAC	8	10
		16	10
		24	20
T-603	120VAC	8	20
		16	20
		24	30
T-604	120VAC	24	40



## THE BRIDGEPORT FITTINGS DIFFERENCE



Distributed by:



705 Lordship Blvd.  
Stratford, CT 06615-7313

Voice: 203.377.5944  
Fax: 203.381.3488  
E-mail: sales@bptfittings.com

[www.bptfittings.com](http://www.bptfittings.com)

CONNECT  
ONLINE



Printed in the U.S.A.  
© 2013 Bridgeport Fittings, Inc. All rights reserved.