

30" Microwave Combination Oven, HBL87M53UC, Stainless Steel



Features and Benefits

Design

- Touch control with SteelTouch™ buttons makes operating the oven easier
- Bosch wall ovens are compatible with most existing cutouts

Performance

- Lower oven's convection multi-rack mode gives uniform baking results even when using all 3 racks simultaneously
- Family or guests late to dinner? Keep food warm in the lower oven without overcooking until ready to serve by using the warm mode
- Lower oven's proof mode maintains a low temperature to proof yeast doughs for an even and faster rise compared to being left on the countertop
- Closed-door broiling prevents intense heat from escaping the lower oven - offering rich, even browning on tender cuts of meat and perfectly toasted casseroles

Efficiency

- Download Bosch Home Connect application and control the lower wall oven with your smart phone or tablet

Convenience

- Keep your home safe by avoiding accidental or unsupervised use of your wall oven with the panel lock feature
- 1 light in the upper microwave and 2 lights in the lower oven gives visibility in the cavity so you can see the cooking progress
- Large oven window lets you monitor the cooking progress without opening the oven door to maintain a consistent oven temperature
- Lower oven comes with 2 standard racks and 1 telescopic rack that gives easier accessibility for large or heavy dishes
- Dampened hinges softly guide the lower oven's QuietClose door shut. It's premium engineering that you'll appreciate each time you close your oven

Capacity

- With capacities of 1.6 cu. ft upper microwave and 4.6 cu. ft. lower oven allows enough space to cook everyday meals or for a crowd

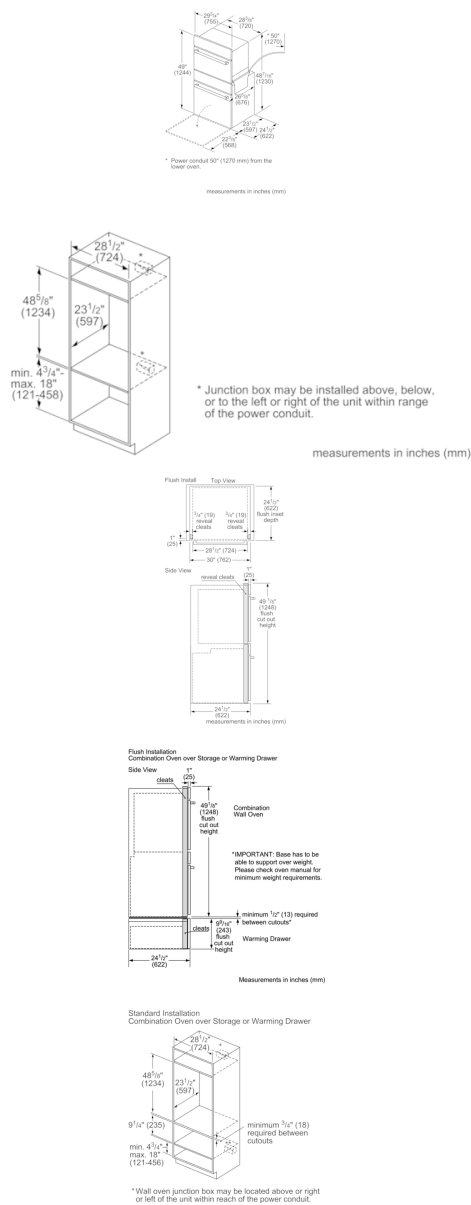
Notes: All height, width and depth dimensions are shown in inches. *Please refer to installation instructions prior to making cutout. BSH reserves the absolute and unrestricted right to change product materials and specifications, at any time, without notice. Consult the product's installation instructions for final dimensional data and other details. Applicable product warranty can be found in a accompanying product literature or you may contact your account manager for further details.

For more information on our entire line of products, go to boschappliances.com or call 1-800-944-2904.

Copyright ©2019 BSH Home Appliances Corporation. All rights reserved. Bosch is a registered trademark of Robert Bosch GmbH.

Litho Date: 07/2019

30" Microwave Combination Oven, HBL87M53UC, Stainless Steel



Features

Cooking mode	Microwave
Cooking method secondary cavity	3rd element convection, Convection Bake, Convection Broil, Convection Roast, Dough proving setting, Pizza setting, Small area grill, Top/bottom heating, Top heating, 1/3 bottom heat., Variable small-area grill, Warming
Integrated Cleaning system	No
Number of interior lights	1
Timer	Yes
Included accessories	1 x oven racks / lower, 1 x temperature probe /lower
Bake Element Wattages primary cavity (W)	600
Broil Element Wattages primary cavity (W)	1750
Convection Element Wattages primary cavity (W)	1700
Microwave Wattages (W)	1000

Technical Specification

UPC code	825225960164
Product color	Stainless steel
Alternative colors available	
Energy source	Electric
Watts (W)	7975
Current (A)	40
Volts (V)	208-240
Frequency (Hz)	60
Approval certificates	CSA
Power Cord Length	50"
Plug type	no plug
Required cutout size (HxWxD) (in)	48 5/8" x 28 1/2" x 23 1/2"
Overall appliance dimensions (HxWxD) (in)	49" x 29 3/4" x 24 1/2"
Product packaging dimensions (HxWxD) (in)	55 3/4" x 34" x 31 1/2"
Net weight (lbs)	328
Gross weight (lbs)	328

Notes: All height, width and depth dimensions are shown in inches. *Please refer to installation instructions prior to making cutout. BSH reserves the absolute and unrestricted right to change product materials and specifications, at any time, without notice.Consult the product's installation instructions for final dimensional data and other details. Applicable product warranty can be found in a accompanying product literature or you may contact your account manager for further details.