

X3C



High Efficiency, Gas Fired, Stainless Steel, Condensing Water Boiler

- Up to 95% AFUE - high efficiency, and low emissions!
- Inexpensive, value-priced, and value-packed condensing boiler
- 80-180 MBH (5 sizes)
- 5:1 turndown saves energy
- ASME "H" stamp-certified stainless steel heat exchanger
- Factory pre-set, advanced Sage2.2 Boiler Control and LCD display reduce installation time and provides EASY, "out-of-the-box" setup and high efficiency from initial startup
- 100% system tested at factory
- Universal vent connection
- Outdoor reset and sensor
- 5-year parts warranty

U.S. Boiler Company

MADE IN U.S.A.

X-C: Technical Information



Standard Equipment

- Direct vent appliance
- Natural or LP gas
- Stainless steel heat exchanger
- Easy access control panel
- Sage2.2 Control System
 - LCD display
 - (3) circulator outputs available
 - Outdoor reset including outside sensor
 - DHW priority
- Variable speed combustion blower
- Gas valve
- Polypropylene condensate trap
- Flow switch, pre-installed
- Supply, return, and flue temperature sensors
- Universal exhaust vent connection
- Differential pressure switch
- Pre-installed hanging bracket and wall mount kit

Accessories

- Kit, CPVC starter and PVC vent terminations: (2" P/N: 107039-01) (3" P/N: 107039-02)
- Service parts repair kit (P/N: 106260-02)

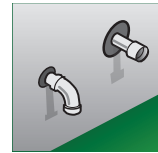
X-C Ratings & Specifications

Model	AFUE%	Input (MBH) min-max	DOE Heating Capacity (MBH)	Net AHRI (MBH)	Vent Size (Inches)
X-C080	94.0	16-80	74	64	2 or 3
X-C100	93.3	20-100	92	80	2 or 3
X-C120	94.0	24-120	112	97	3
X-C150	95.0	30-150	142	123	3
X-C180	94.0	36-180	170	148	3

Safety Relief Valve Pressure, Water – 30 PSI std. ASME "H" stamp. Maximum Allowable Working Pressure is 50 PSI. Boilers shipped set for natural gas. Product is listed for elevations to 2000'.

Typical Venting Configurations (Horizontal and Vertical)

Illustrations are for representation only. For complete venting information, please see X-C Installation manual.



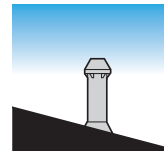
Horizontal 2-pipe



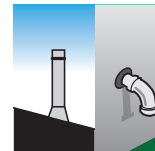
Horizontal 2-pipe low profile



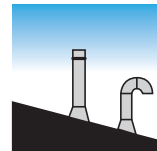
Horizontal 2-pipe concentric



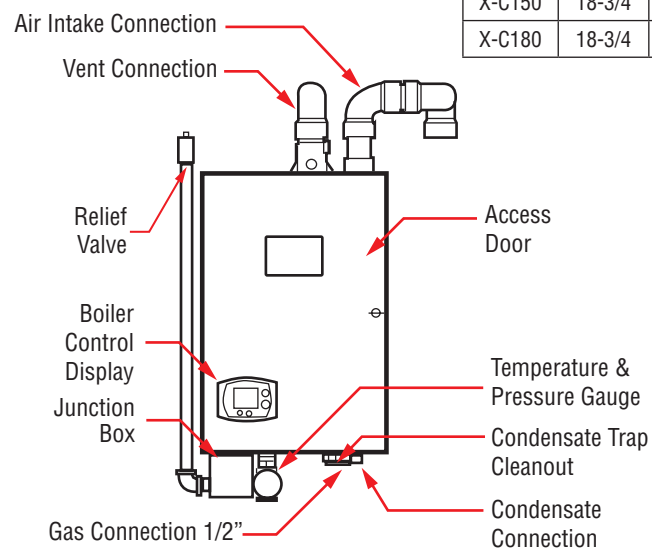
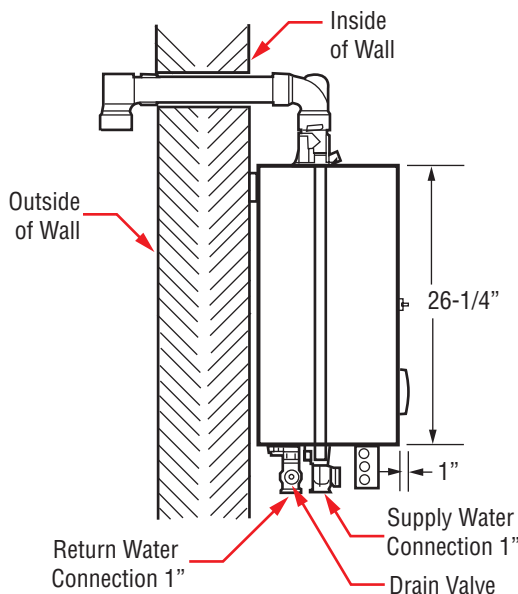
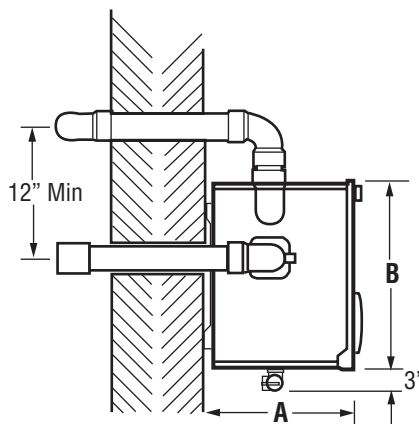
Vertical 2-pipe concentric



Hybrid



Vertical 2-pipe



X-C Dimensions (Inches)

Model	A	B
X-C080	14	17-7/16
X-C100	14	17-7/16
X-C120	14	17-7/16
X-C150	18-3/4	19-15/16
X-C180	18-3/4	19-15/16