

## Type 75 Workshop Socket Fusion Tool

- ✓ Suitable for PE, PB, PP and PVDF
- ✓ Size range from 20mm O.D. to 75mm O.D.

The Widos Type 75 socket fusion welding machine will weld piping systems made from PE, PB, PP or PVDF in sizes from 20mm O.D. up to 75mm O.D.

This machine has easy adjustment on both sides of the tool to ensure correct alignment. There are two clamps on the pipe side, whereas the fitting side has a single clamp plus an insertion stop. The insertion stop will control the entry of the pipe into the fitting.

The electronically controlled heating element (230V/630W) holds the anti-stick coated heating tools. It can also be removed from the prismatic mount and put into a table locking device for external use. A rack-and-pinion mechanism controls the opening and closing motion of the machine.



The Type 75 is optionally available with 110v supply and with inch sized heater blocks.

## Type 3500 and 3600 Workshop Socket Fusion Tool

- ✓ Suitable for PE, PB, PP and PVDF
- ✓ Type 3500 size range from 20mm O.D. to 110mm or 125mm O.D.
- ✓ Type 3600 size range from 20mm O.D. to 160mm O.D.

The Widos Type 3500 socket fusion welding machine will weld piping systems made from PE, PB, PP or PVDF in sizes from 20mm O.D. up to 110mm O.D., or up to 125mm O.D.

The Widos Type 3600 socket fusion welding machine will weld piping systems made from PE, PB, PP or PVDF in sizes from 20mm O.D. up to 160mm O.D.

The machines are mounted on a solid frame and have easy adjustment on both sides of the tool to ensure correct alignment. There are two clamps on the pipe side, whereas the fitting side has a single clamp plus an insertion stop. The insertion stop will control the entry of the pipe into the fitting.



The electronically controlled heating element (230V/1100W) is in accordance with DVS 2208. It holds the anti-stick coated heating tools which may also be ordered in inch dimensions if required. It can also be removed from the prismatic mount and put into a table locking device for external use. A rack-and-pinion mechanism controls the opening and closing motion of the machine.

Special voltages are also available to order.

### Socket Fusion Machines Type 75, 3500 and 3600

| Item  | Size (O.D. mm) | Code      | Price          |
|---|----------------|-----------|----------------|
| Widos Type 75 * (110v / 630w)                         | 20 - 75        | 3701110   |                |
| Steel carry case for Type 75                          |                | TK0075    |                |
| Widos Type 3500 / OD110 * (110v / 1100w)              | 20 - 110       | 3720110   |                |
| Widos Type 3500 / OD125 * (110v / 1100w)              | 20 - 125       | 3740110   | on application |
| Transport and mounting case for Type 3500             |                | TK3500    |                |
| Widos Type 3600 * (110v / 1100w)                      | 63 - 160       | 3730110   |                |
| Optional electronic heating element for Type 3600     |                | H3600E110 |                |
| Transport and mounting case with drawer for Type 3600 |                | TK3600    |                |
| Packing (not required if transport case is purchased) |                | TV0955    |                |

\* Heating blocks not included

### Accessories

| Item                                    | Size (O.D. mm) | Code   | Price          |
|---|----------------|--------|----------------|
| Heating block, non-stick coated, grey * | 20             | HD020S |                |
| Heating block, non-stick coated, grey * | 25             | HD025S |                |
| Heating block, non-stick coated, grey * | 32             | HD032S |                |
| Heating block, non-stick coated, grey * | 40             | HD040S |                |
| Heating block, non-stick coated, grey * | 50             | HD050S |                |
| Heating block, non-stick coated, grey * | 63             | HD063S | on application |
| Heating block, non-stick coated, grey * | 75             | HD075S |                |
| Heating block, non-stick coated, grey * | 90             | HD090S |                |
| Heating block, non-stick coated, grey * | 110            | HD110S |                |
| Heating block, non-stick coated, grey * | 125            | HD125S |                |
| Heating block, non-stick coated, grey * | 140            | HD140S |                |
| Heating block, non-stick coated, grey * | 160            | HD160S |                |

\* Available inch sizes on request

## SG160 Workshop Combined Socket and Butt Fusion Tool

### Butt Fusion Welding

- ✓ Suitable for PE, PP and PVDF
- ✓ Sizes from 32mm to 160mm

### Socket Fusion Welding

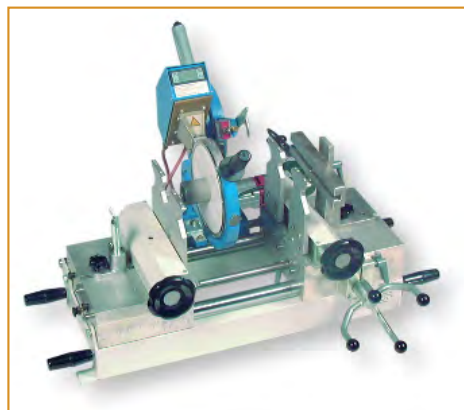
- ✓ Suitable for PE, PB, PP and PVDF
- ✓ Sizes from 16mm to 110mm

The SG160 combined socket and butt fusion tool is a convenient and compact workshop or site tool providing versatile options for use.

As a butt fusion tool it includes motorized parallel planing of the pipe ends, and a heating element with exchangeable PTFE cover sheets. When used for socket fusion welding, it features motorized peeling and chamfering.

Heating surfaces are PTFE coated. All tools have an on/off switch and a digital temperature display.

The standard SG160 includes a 110v power supply. 240v machines are available on request.



## SG160 Combined Socket and Butt Fusion Tool

| Item             | Code  | Price          |
|------------------|-------|----------------|
| SG160 Complete * | SG160 | on application |

\* Machine includes electric planer, heating element, clamping device for butt fusion in sizes 32mm to 160mm, heating blocks for socket fusion in sizes 20mm to 110mm, and transportation case.

### Spares

| Item                                     | Size (O.D. mm) | Code   | Price          |
|--|----------------|--------|----------------|
| Heating block, non-stick coated, grey *  | 20             | HD020S |                |
| Heating block, non-stick coated, grey *  | 25             | HD025S |                |
| Heating block, non-stick coated, grey *  | 32             | HD032S |                |
| Heating block, non-stick coated, grey *  | 40             | HD040S |                |
| Heating block, non-stick coated, grey *  | 50             | HD050S |                |
| Heating block, non-stick coated, grey *  | 63             | HD063S |                |
| Heating block, non-stick coated, grey *  | 75             | HD075S |                |
| Heating block, non-stick coated, grey *  | 90             | HD090S |                |
| Heating block, non-stick coated, grey *  | 110            | HD110S | on application |
| Heating block, non-stick coated, green * | 20             | HD020  |                |
| Heating block, non-stick coated, green * | 25             | HD025  |                |
| Heating block, non-stick coated, green * | 32             | HD032  |                |
| Heating block, non-stick coated, green * | 40             | HD040  |                |
| Heating block, non-stick coated, green * | 50             | HD050  |                |
| Heating block, non-stick coated, green * | 63             | HD063  |                |
| Heating block, non-stick coated, green * | 75             | HD075  |                |
| Heating block, non-stick coated, green * | 90             | HD090  |                |
| Heating block, non-stick coated, green * | 110            | HD110  |                |

\* Available inch sizes on request



### Tool Hire

Many of our workshop or site welding tools are available for hire on a weekly basis. In most cases the hire includes welder training either on site or in our workshop by TWI certified CSWIP qualified welding professionals.

To discuss machine hire or welder training contact Tony Charlton on [tcharlton@ipsflowsystems.com](mailto:tcharlton@ipsflowsystems.com)

Type 2500 Workshop Butt Fusion Tool

- ✓ Suitable for PE, PP and PVDF
- ✓ Size range from 50mm O.D. to 75mm O.D.

The Widos Type 2500 butt fusion welding machine will weld piping systems made from PE, PP or PVDF. The three standard machines will weld pipes in diameters from 50mm O.D. to 160mm O.D., 50mm O.D. to 250mm O.D., or 50mm O.D. to 315mm O.D. A special “Kombi” model is also available that provides butt fusion welding in pipe diameters from 50mm O.D. to 160mm O.D., and socket fusion welding in pipe diameters from 20mm O.D. to 125mm O.D.

The machine includes an electrically operated planer and electronic heating element. The clamping tool is divided into two parts (except for 160mm), each side swivelling up to 15° with clamping inserts and pipe support. This allows welding of segmented bends. A transport and mounting crate is available for safe, clean and protected storage.

The Type 2500 is a handy, mobile welding machine that is suitable for use on site as well as in the workshop. It is available for use with a 110v or 230v power supply - please specify with order.



Butt Fusion Machines Type 2500

| Item                       | Size (O.D. mm) | Code     | Price          |
|----------------------------|----------------|----------|----------------|
| Widos Type 2500 / OD 160 * | 50 - 160       | 38SV11N1 | on application |
| Widos Type 2500 / OD 250 * | 50 - 250       | 38SV21N1 |                |
| Widos Type 2500 / OD 315 * | 50 - 315       | 38SV01N1 |                |
| Transport case             |                | TK2500   |                |

\* Machine includes planer, heating element, basic clamping device, reducer inserts in sizes to suit the machine and prismatic pipe support. For component and accessory prices, please enquire.

Machine Hire

Don't have the tools?  
We have a dedicated fleet of welding equipment available to hire on a weekly basis.



## Type 4001 Workshop Butt Fusion Tool

- ✓ Suitable for PE, PP and PVDF
- ✓ Sizes from 90mm to 315mm

The Widos Type 4001 is a rugged and reliable machine designed for welding polyolefine pipes in the size range from 90mm O.D. to 315mm O.D. An optional extension kit is available to increase the size range up to 450mm O.D.

A universal control lever with separate pressure setting manage the electro-hydraulic welding forces, distances and speeds during the welding process. The planer includes a high torque electrical chain drive and exchangeable blades. Other features of this machine include external chip removal, an adjustable timer and a clamping device that swivels on each side up to 15° for the welding of segmented bends and fittings.

This bench machine can be ordered with an optional support frame if required, and is supplied complete with two carrying handles to assist portability. The hydraulic unit, planer, heating element and clamping tools can also be easily removed for transporting the machine. Other options include special tools to enable the production of tees and crosses, or the electronic weld log recorder SPA 600 which automatically documents all relevant welding parameters.



### Butt Fusion Machine Type 4001

| Item                           | Size (O.D. mm) | Code     | Price          |
|--------------------------------|----------------|----------|----------------|
| Widos Type 4001 (110v / 1300w) | 90 - 315       | 0241110  | on application |
| Conversion kit to 450mm *      | 90 - 450       | 02410110 |                |
| Steel support frame            |                | 024101   |                |

\* Kit includes basic machine with hydraulics but without planer and basic clamping device.  
For component and accessory prices, please enquire.

## Type 4002 Workshop Butt Fusion Tool

- ✓ Suitable for PE, PP and PVDF
- ✓ Sizes from 90mm to 315mm

The Widos Type 4002 is a rugged and reliable machine designed for welding polyolefine pipes in the size range from 90mm O.D. to 315mm O.D. An optional extension kit is available to increase the size range up to 450mm O.D.

A universal control lever with separate pressure setting manage the electro-hydraulic welding forces, distances and speeds during the welding process. The planer includes a high torque electrical chain drive and exchangeable blades. Other features of this machine include external chip removal, an adjustable timer and a clamping device that swivels on each side up to 15° for the welding of segmented bends and fittings.

This machine is supplied fitted to a heavy duty support frame, and is complete with two carrying handles to assist portability. The hydraulic unit, planer, heating element and clamping tools can also be easily removed for transporting the machine. Other options include special tools to enable the production of tees and crosses, or the electronic weld log recorder SPA 600 which automatically documents all relevant welding parameters. CNC control may be included for semi-automatic operation and high levels of control.



### Butt Fusion Machine Type 4002

| Item   | Size (O.D. mm) | Code      | Price          |
|--|----------------|-----------|----------------|
| Widos Type 4002 (110v / 1300w)                       | 90 - 315       | 0231110   | on application |
| Conversion kit to 450mm *                            | 90 - 450       | 02310110  |                |
| Widos Type 4002 with SPA 600 recorder (110v / 1300w) | 90 - 315       | 0231110SP |                |
| Widos Type 4002 S CNC (110v / 1300w)                 | 90 - 315       | 1720110   |                |

\* Kit includes basic machine with hydraulics but without planer and basic clamping device.  
For component and accessory prices, please enquire.

## Miniplast 2 Portable Butt Fusion Tool

- ✓ Suitable for PE, PP and PVDF
- ✓ Size range from 20mm O.D. to 110mm O.D.
- ✓ Highly portable device

The Widos Miniplast 2 is a butt welding machine for PE, PP and PVDF pipes and fittings in diameters from 20mm O.D. to 110mm O.D. It is lightweight and compact.

The special design of this machine makes it suitable for welding in confined spaces where other machines would be unsuitable.

The basic machine has two large aluminium basic clamping tools which swivel up to 15° on each side for the fabrication of segmented bends. By screwing in 4 small reduction inserts, clamping is possible on smaller diameters. For fittings with short legs, a small fitting clamping tool is available. The light and compact manual planer is ratchet operated (electric option), and the electronically controlled heating element is accordance with DVS 2208.

A steel carry case and heat-protected box for the planer and heating element is included when the complete machine is purchased. It is available for use with a 110v or 230v power supply - please specify with order.



### Miniplast 2 Butt Fusion Machine

| Item                   | Size (O.D. mm) | Code     | Price          |
|------------------------|----------------|----------|----------------|
| Widos Miniplast 2 *    | 20 - 110       | 45SVMIN1 | on application |
| Electric planer (110v) |                | 4504110  |                |
| Electric planer (230v) |                | 4504230  |                |

\* Machine includes table support, ratchet planer, heating element, clamping device for 110mm with reducer inserts in sizes 20mm to 90mm, heat protected box and steel carry case.  
For component and accessory prices, please enquire.

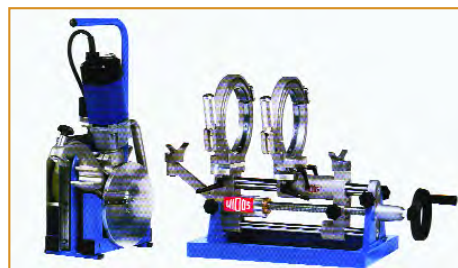
## Maxiplast Portable Butt Fusion Tool

- ✓ Suitable for PE, PP and PVDF
- ✓ Size range from 50mm O.D. to 160mm O.D.
- ✓ Highly portable device

The Widos Maxiplast is a butt welding machine for PE, PP and PVDF pipes and fittings in diameters from 50mm O.D. to 160mm O.D. It is lightweight and compact.

The special design of this machine makes it suitable for welding in confined spaces where other machines would be unsuitable.

The basic machine has two large aluminium basic clamping tools which swivel up to 15° on each side for the fabrication of segmented bends. By using reduction inserts, clamping is possible on smaller diameters. The compact planer is electrically operated, and the electronically controlled heating element is accordance with DVS 2208.



A transportation case and heat-protected box for the planer and heating element is included when the complete machine is purchased. It is available for use with a 110v or 230v power supply - please specify with order.

### Maxiplast Butt Fusion Machine

| Item              | Size (O.D. mm) | Code    | Price          |
|-------------------|----------------|---------|----------------|
| Widos Maxiplast * | 50 - 160       | 45SVMAX | on application |

\* Machine includes table support, electric planer, heating element, clamping device with reducer inserts in sizes 50mm to 140mm, heat protected box and transportation case.  
For component and accessory prices, please enquire.



## Proxima Centaur Electrofusion Machine

- ✓ Suitable for PE and PP fittings up to 48v
- ✓ Welding process is monitored throughout
- ✓ Barcode or manual entry
- ✓ Simple to operate
- ✓ Robust yet easy to handle



- Level 3 Maxifuse Proxima Centaur electrofusion processor
- Available for use with either 110 or 230 volt A.C. supplies
- Fusion times input manually, by reading barcode
- Detachable fitting supply chord with military plug & socket and choice of 4.0 or 4.7mm fittings connector plugs
- Output voltage level user selectable 10-48 in manual mode
- Optional operative ID card recognition and lock out for restricting unqualified users
- Optional ability to accept additional information on the joint, e.g. batch no etc.
- Confirmation the joint was scraped and clamped
- Bar code reader option and manual override
- USB port to download weld data
- Optional control function to restrict welder activities e.g. jointing up to 180mm, from 180-355mm & 355mm
- Multilingual display

### Technical Data

|                  |  |                   |   |
|------------------|--|-------------------|---|
| Operating mode:  | Manual Time Entry<br>Bar Code Entry                        | Output voltage:   | 39.5v ac true rms (default 40v mode)<br>(10 to 48v ac selectable in 40v manual mode)<br>(8 to 48v ac in barcode mode) |
| GPS location:    | Available on Request                                       | Output stability: | +/- 1.5%  |
| Data log memory: | 702 welds  | Output current:   | 1 A to 60 A (continuous)  |
| Memory download: | USB Flash Disc   | Output power:     | 40w to 2370w  |
| Languages:       | English (others available on request)                      | Operating temp:   | -10°C to +40°C  |
| Input voltage:   | 110v ac (88 to 132) or<br>240v ac (184 to 276)             | Weight:           | 22.6kg (excluding output leads)   |
| Input frequency: | 50 Hz (40 to 70)   | Dimensions:       | 38.5 x 27.5 x 21.5cm  |
| Input current:   | 1 A to 30 A with 110v input<br>1 A to 14 A with 240v input | Protection level: | IP54  |
| Input power:     | 110 VA to 3300 VA (apparent)                               | Protection class: | Class 1 (equipment must be earthed)   |
| Power factor:    | Apparent 0.72  |                   |   |

### Information display:

All the welding information and entered data is shown here. The display is permanently illuminated and is visible in all light conditions.

### USB data port:

The USB data port allows connection to a USB memory device for downloading the weld information records. With a barcode reader wand or scanner connected to the USB data port the capability of performing full barcode welding is enabled.

### Start button:

Used to start the welding cycle also used in entering weld information.

### Stop button:

Used to stop the welding cycle also used in entering weld information.

### Keypad:

Used for entering weld information. Designed to withstand harsh site environments.



## Type 4400/4600/4900 Site Butt Fusion Tool

- ✓ Suitable for PE, PP and PVDF
- ✓ Type 4400 size range from 50mm O.D. to 160mm O.D.
- ✓ Type 4600 size range from 75mm O.D. to 250mm O.D.
- ✓ Type 4900 size range from 90mm O.D. to 315mm O.D.
- ✓ Can be retro-fitted with SPA weld log recorder
- ✓ CNC version available

The Widos Types 4400/4600/4900 are butt welding machines for PE, PP and PVDF pipes and fittings that have been designed for rugged use on construction sites and in trenches.

The machine has a double clamping device with quick clamping on the fixed and on the movable side guided by two hydraulic cylinders. There are two flexible hoses with quick-action couplings for connection to the hydraulic control unit. The double clamping devices are screwed to the steel pipe frame. The outer fixed clamping tool can be easily dismantled to enable welding in places of poor accessibility.

The electro-hydraulic unit (for moving the right-hand clamping device and for the exact control of the welding forces) has a pressure backup for supporting the welding force during the cooling period, two quick-action couplings as well as a digital pressure gauge.

The planer is suspended in the guide shafts, has a chain drive in a closed aluminium housing, a security micro switch with lock and an automatic external chip removal.

The heating element is suspended in the guide shafts and is anti-stick coated. It has an electronic temperature control with digital display, control lamps, an on/off switch and a connection cable with shock-proof plug. The heat-separating device prevents the heating element from sticking to the pipe after the heating process.

The Widos 4400, 4600 and 4900 welding machines can easily be retrofitted with the Widos SPA weld log recorder and can also be supplied in CNC controlled version. Automatic movement of the heating element is also an option. The machines are supplied with a transportation case and are available for use with a 110v or 230v power supply - please specify with order.



Type 4400



Type 4600



Type 4900

### Butt Fusion Machine Type 4400

| Item  | Size (O.D. mm) | Code     | Price          |
|---|----------------|----------|----------------|
| Widos Type 4400 with 160mm clamping device *        | 50 - 160       | 16SV44N1 | on application |
| Widos Type 4400 SPA600 with 160mm clamping device * | 50 - 160       | 62SV44S1 |                |
| Widos Type 4400 CNC3.0 with 160mm clamping device * | 50 - 160       | 62SV44C1 |                |
| Reducer inserts, set 50mm - 140mm                   |                | 16VS140  |                |

\* Reducer inserts not included

### Butt Fusion Machine Type 4600

| Item  | Size (O.D. mm) | Code     | Price          |
|---|----------------|----------|----------------|
| Widos Type 4600 with 250mm clamping device *        | 75 - 250       | 09SV46N1 | on application |
| Widos Type 4600 SPA600 with 250mm clamping device * | 75 - 250       | 09SV46S1 |                |
| Widos Type 4600 CNC3.0 with 250mm clamping device * | 75 - 250       | 61SV46C1 |                |
| Reducer inserts, set 75mm - 225mm                   |                | 09VS225  |                |

\* Reducer inserts not included

### Butt Fusion Machine Type 4900

| Item  | Size (O.D. mm) | Code     | Price          |
|---|----------------|----------|----------------|
| Widos Type 4900 with 315mm clamping device *        | 90 - 315       | 21SV49N1 | on application |
| Widos Type 4900 SPA600 with 315mm clamping device * | 90 - 315       | 21SV49S1 |                |
| Widos Type 4900 CNC3.0 with 315mm clamping device * | 90 - 315       | 63SV49C1 |                |
| Reducer inserts, set 90mm - 280mm                   |                | 21VS280  |                |

\* Reducer inserts not included

## Type 5100/5500/6100 Site Butt Fusion Tool

- ✓ Suitable for PE, PP and PVDF
- ✓ Type 5100 size range from 200mm O.D. to 450mm O.D.
- ✓ Type 5500 size range from 200mm O.D. to 500mm O.D.
- ✓ Type 6100 size range from 315mm O.D. to 630mm O.D.
- ✓ Can be retro-fitted with SPA weld log recorder
- ✓ CNC version available

The Widos Types 5100/5500/6100 are butt welding machine for PE, PP and PVDF pipes and fittings that have been designed for rugged use on construction sites and in trenches.

The machine has a double clamping device with quick clamping on the fixed and on the movable side guided by two hydraulic cylinders. There are two flexible hoses with quick-action couplings for connection to the hydraulic control unit. The double clamping devices are screwed to the steel pipe frame. The outer fixed clamping tool can be easily dismounted to enable welding in places of poor accessibility.

The electro-hydraulic unit (for moving the right-hand clamping device and for the exact control of the welding forces) has a pressure backup for supporting the welding force during the cooling period, two quick-action couplings as well as a digital pressure gauge.

The planer is suspended in the guide shafts, has a chain drive in a closed aluminium housing, a security micro switch with lock and an automatic external chip removal.

The heating element is suspended in the guide shafts and is anti-stick coated. It has an electronic temperature control with digital display, control lamps, an on/off switch and a connection cable with shock-proof plug. The heat-separating device prevents the heating element from sticking to the pipe after the heating process.

The Widos 5100, 5500 and 6100 welding machines can easily be retrofitted with the Widos SPA weld log recorder and can also be supplied in CNC controlled version. Automatic movement of the heating element is also an option. The machines are supplied with a transportation case and are available for use with a 415v 3 phase power supply.



Type 5100



Type 5500



Type 6100

### Butt Fusion Machine Type 5100

| Item  | Size (O.D. mm) | Code     | Price          |
|---|----------------|----------|----------------|
| Widos Type 5100 with 450mm clamping device *        | 200 - 450      | 07SV51N1 | on application |
| Widos Type 5100 SPA600 with 450mm clamping device * | 200 - 450      | 07SV51S1 |                |
| Widos Type 5100 CNC3.0 with 450mm clamping device * | 200 - 450      | 64SV51C1 |                |
| Reducer inserts, set 200mm - 400mm                  |                | 07VS400  |                |

\* Reducer inserts not included

### Butt Fusion Machine Type 5500

| Item  | Size (O.D. mm) | Code     | Price          |
|---|----------------|----------|----------------|
| Widos Type 5500 with 500mm clamping device *        | 200 - 500      | 39SV55N1 | on application |
| Widos Type 5500 SPA600 with 500mm clamping device * | 200 - 500      | 09SV46S1 |                |
| Widos Type 5500 CNC3.0 with 500mm clamping device * | 200 - 500      | 39SV55C1 |                |
| Reducer inserts, set 200mm - 450mm                  |                | 39VS450  |                |

\* Reducer inserts not included

### Butt Fusion Machine Type 6100

| Item  | Size (O.D. mm) | Code     | Price          |
|---|----------------|----------|----------------|
| Widos Type 6100 with 630mm clamping device *        | 315 - 630      | 08SV61N1 | on application |
| Widos Type 6100 SPA600 with 630mm clamping device * | 315 - 630      | 08SV61S1 |                |
| Widos Type 6100 CNC3.0 with 630mm clamping device * | 315 - 630      | 65SV61C1 |                |
| Reducer inserts, set 315mm - 560mm                  |                | 08VS560  |                |

\* Reducer inserts not included



## for AGRU high purity piping systems

### AGRU SP Series IR Fusion

#### FULLY AUTOMATED WELDING OPERATION

All welding parameters are recorded by the computer. By means of a touch-screen, all steps are controlled and sequential.

#### OPERATOR CONTROL

Use of the machine is controlled by PCMCIA cards which also double as storage discs for downloading of welding data from the computer's memory. Historical welding information can be recalled at any time and displayed on screen, simplifying traceability.

#### THE FUSION PROCESS

The computer will control pressure, temperature, heating time and cooling time according to pre-programmed welding parameters which meet the requirements of DVS.

#### CLAMPING TOOLS

The clamping tools are equipped with a new and unique closing device which ensures uniform and repeatable clamping pressure.

#### HEATING ELEMENT

The heating element is produced from a special alloy which is controlled and automatically changed to compensate for the smallest temperature changes.

#### SUITABLE FOR CLEAN ROOM USE

(Class 100 and less)

All surfaces are specially heated and coated to protect against particle generation. Motors and actuators are encapsulated, and guiding devices are free of oil and are fully covered. Records of each weld are printed onto a special thermal printer onto a thermoplastic label which resists IPA.

#### POWER SUPPLY

Special voltage limiting circuits are included so that the machine is insensitive to spikes. If the voltage is incorrect, it is visible on the touch-screen.

#### WIDE SIZE RANGE

The SP110S machine welds 20mm to 110mm.

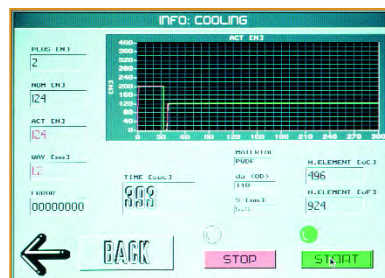
The SP315S machine welds 75mm to 315mm.



Agru SP110S computer controlled IR welding machine



Highly reproduceable accurate weld beads  
Printed labels give weld traceability



Touch screen computer control displays live welding parameters



## Agru SP110S IR Fusion

- ✓ Suitable for welding PP, PVDF, PFA and ECTFE
- ✓ Size range 20mm to 110mm
- ✓ Infra Red (IR) heating element
- ✓ Fully automatic welding
- ✓ Touch screen controls
- ✓ PCMCIA code card included
- ✓ Optional thermolabel printer
- ✓ Optional nitrogen purge



## Agru SP315S IR Fusion

- ✓ Suitable for welding PP, PVDF, PFA and ECTFE
- ✓ Size range 75mm to 250mm
- ✓ Infra Red (IR) heating element
- ✓ Fully automatic welding
- ✓ Touch screen controls
- ✓ PCMCIA code card included
- ✓ Optional thermolabel printer
- ✓ Optional nitrogen purge



## Agru HPF Electrofusion

- ✓ Suitable for welding AGRU PVDF
- ✓ HPF sleeves can be used with all AGRU PVDF pipes and fittings
- ✓ Size range 20mm to 63mm
- ✓ Fully automatic barcoded welding system
- ✓ Interface for printer
- ✓ Can be supplied with silicon balloon for high purity welding
- ✓ Optional long cables for welding in remote locations



## Don't know how to use a product?

Give our expert team a call:

**0800 975 79 71**

Or from outside of the UK: +44 191 521 3111

