

GoodParts®

HVAC SUPPLIES & SERVICES



SPRING/SUMMER 2010

GOODMAN® INDOOR AIR QUALITY PRODUCTS

Goodman® GBB - Builder's Media	3
Goodman® GMU.....	5
Goodman® G13MU	7
Goodman® GRAM - Right-Angle.....	9
Goodman® G1EAC - 1" Charged Media	11
Goodman® GSAS	13
Goodman® GGM - Grille Mount	15
Goodman® GHEPA/GDMHEPA.....	17
Goodman® DMH900.....	19
Goodman® UVX - Object Purifier.....	21
Goodman® UVX - Air Purifier	23
Goodman® HRV/ERV	25
Goodman® HUM	27

AMANA® INDOOR AIR QUALITY PRODUCTS

Amana® ABB - Builder's Media.....	31
Amana® AMU	33
Amana® A13MU	35
Amana® ARAM - Right-Angle	37
Amana® A1EAC - 1" Charged Media.....	39
Amana® ASAS	41
Amana® AGM - Grille Mount.....	43
Amana® AHEPA/ADMHEPA	45
Amana® DMH900	47
Amana® UVX – Object Purifier	49
Amana® UVX - Air Purifier.....	51
Amana® HRV/ERV.....	53
Amana® HUM.....	55

CONTROLS

Goodman® Controls	59
Amana® Controls.....	61

UNIT PROTECTIVE COVERS

Unit Protective Covers.....	63
-----------------------------	----

TIE STRAPS & DUCT STRAPS

Tie Straps & Duct Straps.....	65
-------------------------------	----

MCDANIEL METAL PRODUCTS

McDaniel Metal Products	67
-------------------------------	----

EQUIPMENT PADS

Equipment Pads.....	69
---------------------	----

GAS CONNECTION LINES

Gas Connection Lines	71
----------------------------	----

CONDENSATE PUMPS

Condensate Pumps	73
------------------------	----

continued on next page

FILTER DRYERS/SYSTEM PROTECTORS

Parker - Dryers, TXV & Sightglasses	75
Refrigerant Tools & Accessories.....	79

ELECTRICAL COMPONENTS

Electrical Components	81
Goodparts® Motors	87
Motors - Universal Replacement & Accessories.....	89
Commercial Smoke Detectors	91
Aquaguard	93
Float Switches	95
Whips & Disconnect Switches.....	97

SCREWS AND FASTENERS

Screws & Fasteners.....	99
-------------------------	----

THERMOSTAT WIRE

Thermostat Wire	101
-----------------------	-----

FUSES

Littlefuse® Fuses.....	103
------------------------	-----

LINESETS & ROLLED COPPER

HVAC Line Sets	105
Copper Refrigeration Tubing.....	107

COPPER FITTINGS

Copper Fittings.....	109
----------------------	-----

PIPE INSULATION

Pipe Insulation.....	113
K-Flex Tapes	115

PVC PIPE AND FITTING

Thermoplastic Piping.....	117
---------------------------	-----

TAPES AND ADHESIVES

Fasson® Tapes & Adhesives.....	119
--------------------------------	-----

CHIMNEY LINER KITS

Chimney Liner Kits.....	121
-------------------------	-----

GRILLES AND REGISTERS

Grilles & Registers	123
---------------------------	-----

QUIETFLEX®

Quietflex® Insulated Sleeve.....	131
Quietflex® Mobile Home-Approved.....	135
Quietflex® "RIP-STOP" Silver Jacket	137
Quietflex® UV-Inhibited Black Jacket	143
Quietflex® Uninsulated Air Connector.....	147

GOODMAN® GBB - BUILDER'S MEDIA

The Goodman® GBB High-Efficiency Builder's Media Air Cleaner is designed to remove airborne contaminants down to 0.3 micron. The GBB helps protect and prolong the operating efficiency of the heating and cooling equipment.

PRODUCT FEATURES

- High-efficiency MERV 11 Media Filter helps remove household particles down to 0.3 micron
- Perfect-fit filter allows no air gaps
- User-friendly, easy-to-change filter
- Reversible airflow; mounts in any position
- 22-gauge galvanized-steel cabinet



Goodman® GBB - Builder's Media

**Full warranty details available at www.goodmanmfg.com*

GOODMAN® GBB BUILDER'S MEDIA	DESCRIPTION	STANDARD PACK QTY
GBB1625	16" x 25" Builder's Media Air Cleaner 1400 CFM	1
GBB2025	20" x 25" Builder's Media Air Cleaner 2000 CFM	1
M1-1056	Media Filter for GMU1625/GBB1625	3
M8-1056	Media Filter for GMU2025/GBB2025/GRAM2000	3

GOODMAN® GMU

PRODUCT FEATURES

- High-efficiency MERV 11 Media Filter helps remove household particles down to 0.3 micron
- Carbon filters remove odors
- Easy-to-change filter
- Replacement filters available; see table below
- Heavy-gauge galvanized-steel cabinet provides trouble-free vertical or horizontal installation
- Reversible airflow; mounts in any position
- Durable, attractive Architectural Gray powder-paint finish resists corrosion



Goodman® GMU

*Full warranty details available at www.goodmanmfg.com

GOODMAN® GMU	DESCRIPTION	STANDARD PACK QTY
GMU1620A	16" x 20" Media Air Cleaner 1200 CFM	1
GMU1625A	16" x 25" Media Air Cleaner 1400 CFM	1
GMU2020A	20" x 20" Media Air Cleaner 1400 CFM	1
GMU2025A	20" x 25" Media Air Cleaner 2000 CFM	1
M0-1056	Media Filter for GMU1620	3
M1-1056	Media Filter for GMU1625/GBB1625	3
M2-1056	Media Filter for GMU2020	3
M8-1056	Media Filter for GMU2025/GBB2025/GRAM2000	3
1156-3	Carbon Filters GSAS - 10,11/GMU 1620,1625	1
1856-3	Carbon Filters GSAS - 12, 18/GMU 2020, 2025	1

GOODMAN® G13MU

- Removes airborne contaminants down to 0.3 micron on the first pass of air.
- Filter material uses both charged fibers and traditional mechanical filtration principles. The charged fibers allow the media to achieve MERV 13 levels upon installation.
- Extra deep, 5¼", 26-pleat filter contains more media material than other filters on the market. More surface area means more collection area, longer filter life, and lower static pressure.
- Filter fits snugly into cabinet
- User-friendly, easy-to-change filter cartridge
- Filter lasts up to one year in standard applications
- Reversible airflow
- Mounts in any position
- Easily upgrades to the new Goodman "D Series" High-Efficiency Electronic Air Cleaner, which is capable of removing harmful contaminants as small as 0.01 micron (1/2,540,000 of an inch)



Goodman® G13MU

*Full warranty details available at www.goodmanmfg.com

CABINET FEATURES

- Heavy-gauge galvanized-steel cabinet resists corrosion
- Trouble-free vertical or horizontal installation
- Durable powder-paint finish on door resists corrosion

GOODMAN® G13MU	DESCRIPTION	STANDARD PACK QTY
G13MU1625	Green Efficiency Media Retrofit Air Cleaner 16" x 25" x 5"	ea
G13MU2025	Green Efficiency Media Retrofit Air Cleaner 20" x 25" x 5"	ea
G1-1056	MERV 13 Media Repl Filter (16" x 25")	ea
G8-1056	MERV 13 Media Repl Filter (20" x 25")	ea
EACK1625A	Upgrade Kit to GSAS EAC for G13MU & GMU 16" x 25"	ea
EACK2025A	Upgrade Kit to GSAS EAC for G13MU & GMU 20" x 25"	ea

GOODMAN® GRAM - RIGHT-ANGLE

- High-efficiency MERV 11 Media Filter removes atmospheric and household particles down to 0.3 micron
- Reversible airflow
- Perfect-fit filter allows no air gaps
- User-friendly, easy-to-change filter means no fussing with complicated combs or brackets
- Adjustable inlet duct opening replaces need for field-forming transition, significantly reducing installation time



Goodman® GRAM - Right-Angle

**Full warranty details available at www.goodmanmfg.com*

GOODMAN® GRAM RIGHT- ANGLE	DESCRIPTION	STANDARD PACK QTY
GRAM2000	Right Angle Media Air Cleaner 2000 CFM	1
M8-1056	Media Filter for GMU2025 /GGB2025/GRAM2000	3

GOODMAN® G1EAC - 1" CHARGED MEDIA

The Goodman® G1EAC 1" Charged-Media Electronic Air Cleaner provides a 24-volt polarized charge on the media pads to capture and remove airborne particles. Contributing to the air cleaner's reliable operation is its carbon-graphite-center charging screen, which is permanently mounted to the air cleaner frame. Attached to each of the frame's four corners, internal center screen spacers are open-faced to maximize airflow. For added durability, a one-piece, injection-molded power head is "capped" and sealed to be watertight.

PRODUCT FEATURES

- Highest efficiency in the industry for a 1" electronic air cleaner
- Does not produce hazardous ozone or positive ions
- Quiet operation
- Fully electronic, reliable, high-efficiency carbon-graphite-center screen removes particles as small as 0.01 micron
- Uses little electrical current to avoid system overload
- Efficiency increases as the air cleaner operates
- Designed to operate with constant power or with the system's fan to permit reliable, long-term performance
- Independently tested and certified
- MERV 10-Rated Efficiency (ASHRAE Standard 52.2)



Goodman® G1EAC - 1" Charged Media

**Full warranty details available at www.goodmanmfg.com*

- Replacement media pads feature high dust-holding capacities and low-static pressure curves
- Easy to install, maintain, and service
- Fits all central HVAC residential systems
- Corrosion-resistant construction
- Open-face design maintains low static pressure

GOODMAN® G1EAC 1" CHARGED MEDIA	DESCRIPTION	STANDARD PACK QTY
G1EAC-1224	12" x 24" x 1" Electronic Air Cleaner	3
G1EAC-1420	14" x 20" x 1" Electronic Air Cleaner	3
G1EAC-1424	14" x 24" x 1" Electronic Air Cleaner	3
G1EAC-1425	14" x 25" x 1" Electronic Air Cleaner	3
G1EAC-1430	14" x 30" x 1" Electronic Air Cleaner	3
G1EAC-1520	15" x 20" x 1" Electronic Air Cleaner	3
G1EAC-1620	16" x 20" x 1" Electronic Air Cleaner	3
G1EAC-1624	16" x 24" x 1" Electronic Air Cleaner	3
G1EAC-1625	16" x 25" x 1" Electronic Air Cleaner	3
G1EAC-1820	18" x 20" x 1" Electronic Air Cleaner	3
G1EAC-2020	20" x 20" x 1" Electronic Air Cleaner	3

continued on next page

continued from previous page

GOODMAN® G1EAC 1" CHARGED MEDIA	DESCRIPTION	STANDARD PACK QTY
G1EAC-2024	20" x 24" x 1" Electronic Air Cleaner	3
G1EAC-2025	20" x 25" x 1" Electronic Air Cleaner	3
G1EAC-2424	24" x 24" x 1" Electronic Air Cleaner	3
G1EAC-2030	20" x 30" x 1" Electronic Air Cleaner	3
G1EAC-2036	20" x 36" x 1" Electronic Air Cleaner	3
	REPLACEMENT MEDIA	
GA1MEDIA-1224	12" x 24" Replacement Media	3
GA1MEDIA-1420	14 x 20" Replacement Media	3
GA1MEDIA-1424	14" x 24" Replacement Media	3
GA1MEDIA-1425	14" x 25" Replacement Media	3
GA1MEDIA-1430	14" x 30" Replacement Media	3
GA1MEDIA-1520	15" x 20" Replacement Media	3
GA1MEDIA-1620	16" x 20" Replacement Media	3
GA1MEDIA-1624	16" x 24" Replacement Media	3
GA1MEDIA-1625	16" x 25" Replacement Media	3
GA1MEDIA-1820	18" x 20" Replacement Media	3
GA1MEDIA-2020	20" x 20" Replacement Media	3
GA1MEDIA-2024	20" x 24" Replacement Media	3
GA1MEDIA-2025	20" x 25" Replacement Media	3
GA1MEDIA-2424	24" x 24" Replacement Media	3
GA1MEDIA-2030	20" x 30" Replacement Media	3
GA1MEDIA-2036	20" x 36" Replacement Media	3
GA1MEDIA-ROLL	Replacement Media Roll 30" x 30"	3

GOODMAN® GSAS

PRODUCT FEATURES

- Environmentally friendly lifetime filtration system electronically removes lung-damaging air pollutants down to 0.01 micron
- Carbon filters remove odors
- Dual indicator lights show unit operation at a glance
- Electronic Air Proving Switch cycles the air cleaner on/off with the system fan
- Includes dual indicator lights
- Replacement filters available; see table below
- Heavy-gauge galvanized-steel cabinet provides trouble-free vertical or horizontal installation
- Durable powder-coat paint finish resists corrosion



Goodman® GSAS

*Full warranty details available at www.goodmanmfg.com

GOODMAN® GSAS	DESCRIPTION	STANDARD PACK QTY
GSAS-10	Electronic Air Cleaner 16" x 20" 1200 CFM	1
GSAS-11	Electronic Air Cleaner 16" x 25" 1400 CFM	1
GSAS-12	Electronic Air Cleaner 20" x 20" 1400 CFM	1
GSAS-18	Electronic Air Cleaner 20" x 25" 2000 CFM	1
GSAS10-2	Electronic Air Cleaner 16" x 20" 1200 CFM - 240V	1
GSAS11-2	Electronic Air Cleaner 16" x 25" 1400 CFM - 240V	1
GSAS12-2	Electronic Air Cleaner 20" x 20" 1400 CFM - 240V	1
GSAS18-2	Electronic Air Cleaner 20" x 25" 2000 CFM - 240V	1
GSAS-10PC	Electronic Air Cleaner 16" x 20" w/Power Cord	1
GSAS-11PC	Electronic Air Cleaner 16" x 25" w/Power Cord	1
GSAS-12PC	Electronic Air Cleaner 20" x 20" w/Power Cord	1
GSAS-18PC	Electronic Air Cleaner 20" x 25" w/Power Cord	1
1156-3	Carbon Filters GSAS - 10,11/GMU 1620,1625	1
1856-3	Carbon Filters GSAS-12, 18/GMU 2020, 2025	1
FS9900	32oz Dax Detergent, Spray Bottle	6

GOODMAN® GGM - GRILLE MOUNT

The Goodman® brand GGM High-Efficiency Grille-Mount Electronic Air Cleaner is designed to remove airborne contaminants down to 0.01 micron. The GGM Series helps protect and prolong the operating efficiency of the heating and cooling equipment.

PRODUCT FEATURES

- Pre-filters (2) are constructed of aluminum mesh to prevent lint and large particles from entering the collecting cells
- Collecting cells (2) are constructed of heavy-gauge aluminum for durability and ease of maintenance
- Plastic intake grille is easy to wipe clean
- Hinged, swing-out door allows easy access to filters
- Automatic interlock switch disconnects power when door is opened
- Air-proving switch allows for quick wiring; automatically cycles air cleaner on/off with the system fan
- Performance indicator light ensures air cleaner is operating properly at a glance
- Reliable solid-state power board is uniquely equipped with a variable resistor (potentiometer) to adjust high-voltage output if necessary



Goodman® GGM - Grille Mount

**Full warranty details available at www.goodmanmfg.com*

GOODMAN® GGM GRILLE MOUNT	DESCRIPTION	STANDARD PACK QTY
GGM20AS-A	Return Grille Mount Electronic Air Cleaner	1
FS9900	32oz DAX Detergent, Spray Bottle	6

GOODMAN® GHEPA/GDMHEPA

The Goodman® GHEPA/GDMHEPA Whole-House True HEPA Air Cleaners are designed to help protect and prolong the operating efficiency of the heating and cooling equipment. The activated carbon pre-filter and the optional after-filter remove atmospheric and household odors and particles. While the GHEPA models are easily installed in a free-standing position, the GDMHEPA model has various installation options (duct-mounted, collar-mounted or free-standing).

PRODUCT FEATURES

- Certified true HEPA (High-Efficiency Particulate Air) filter
- 99.97% efficient at removing particles down to 0.3 micron
- Activated carbon pre-filter
- Carbon VOC (Volatile Organic Compound) filter (included with Model GHEPA 550)
- Removes atmospheric and household particles
- Easy-to-change filters
- Power cord for plug-in; no electrical wiring
- Heavy-gauge steel cabinet with powder-paint finish
- Versatile installation
 - GHEPA: free-standing, ceiling-mounted, or wall-mounted
 - GDMHEPA: free-standing, duct-mounted, or collar-mounted
- Corrosion-resistant cabinet provides rigid installation and durability



GHEPA Model



GDMHEPA Model

Goodman® GHEPA/GDMHEPA

*Full warranty details available at www.goodmanmfg.com



GOODMAN® GHEPA/GDMHEPA	DESCRIPTION	STANDARD PACK QTY
GHEPA350	Whole-House HEPA Filtration Unit 245 CFM	1
GHEPA450	Whole-House HEPA Filtration Unit 330 CFM	1
GHEPA550-3	Whole-House HEPA Filtration Unit 540 CFM	1
GHEPA650	Whole-House HEPA Filtration Unit 560 CFM	1
GDMHEPA400	Duct Mount HEPA Filtration Unit 320 CFM	1
GHEPA350 REPLACEMENT FILTERS		
W3-0840	HEPA Filter Cylinder - GHEPA 350	1
W3-0855	Carbon Pre-filter Blanket - GHEPA 350	1
W3-0810	Inner Carbon VOC Blanket - GHEPA 350	1
GHEPA450 REPLACEMENT FILTERS		
W4-0840	HEPA Filter Cylinder - GHEPA 450	1
W4-0855	Carbon Pre-filter Blanket - GHEPA 450	1
W4-0810	Inner Carbon VOC Blanket - GHEPA 450	1

continued on next page

continued from previous page

GOODMAN® GHEPA/GDMHEPA	DESCRIPTION	STANDARD PACK QTY
	GHEPA550-3 REPLACEMENT FILTERS	
W5-0860	HEPA Filter Cylinder - GHEPA 550 (Old Style)	1
W5-0860-3	HEPA Filter Cylinder - GHEPA 550-3	1
W5-0810	Carbon Pre-filter - GHEPA 550-3	1
W5-0820	Carbon VOC After-filter - GHEPA 550-3	1
W5-0885	Carbon/Potass./ Permanganate VOC After-filter	1
	GHEPA650 REPLACEMENT FILTERS	
W6-0840	HEPA Filter Cylinder - GHEPA 650	1
W6-0855	Carbon Pre-filter Blanket - GHEPA 650	1
W6-0810	Inner Carbon VOC Blanket - GHEPA 650	1
	GDMHEPA400 REPLACEMENT FILTERS	
DMH4-0400	HEPA Replacement Filter - GDMHEPA400	1
DMH4-0810	Merv 8 Pre-filter - GDM HEPA 400	1
DMH4-0855	Carbon Pre-filter - GDM HEPA 400	1
DMH4-0810	Merv 8 Pre-filter - GDM HEPA 400	1
DMH4-0855	Carbon Pre-filter - GDM HEPA 400	1

GOODMAN® DMH900

The Goodman® brand DMH900 Whole-House Air Cleaner uses HEPA, UVC germicidal lights (non-ozone producing) and CinQuartz® Photo-Catalytic Oxidation to filter and sterilize the air. This unit removes and destroys allergens and atmospheric dust, as well as biological and chemical contaminants and odors. The DMH900 can be mounted in a variety of positions: duct-mounted, collar-mounted, or free-standing.

PRODUCT FEATURES

- 99.97% efficient at removing particles down to 0.3 micron
- Two UVC germicidal lights enclosed in an anodized UV reflector to intensify UV rays
- The UVC light and CinQuartz® Photo-Catalytic Oxidation (PCO) filter decompose organic materials into basic molecules such as H₂O and CO₂
- Carbon pre-filter removes lint and hair before they enter HEPA filter
- Motor delivers 250 CFM of clean air, without adding static pressure to the HVAC system
- Versatile installation: duct-mounted, collar-mounted, or free-standing
- One piece steel cabinet wrap



Goodman® DMH900

*Full warranty details available at www.goodmanmfg.com

- Powder-coat paint finish
- Pre-punched openings and mounting template for easier installation; no external ducting required

GOODMAN® DMH900	DESCRIPTION	STANDARD PACK QTY
DMH-900	Duct Mount HEPA, UV & Photo Catalytic Air Filter	1
DMH4-0400	99.97% HEPA Media Filter	1
DM900-0855	Pre-filter Carbon	1
DMH4-1002	Mounting Kit: (2) 8" Collars with 16 Screws	1
DMH4-1004	Mounting Kit: (4) 8" Collars with 32 Screws	1
DM900-0191	UV Lamp: Includes lamp support clip	1
DM900-0450	Photo-Catalytic Oxidation (PCO) Filter	1
DM900-0810	Final Filter, Carbon/ Potassium Permanganate	1
DM900-1002	UV Lamp & PCO Filter Kit: contains 2 UV lamps, 2 lamp support clips and IPCO filter, gloves, alcohol wipe	1

GOODMAN® UVX - PR SERIES OBJECT PURIFIER

The Goodman® UVX-PR Series Ultraviolet Object Purifier is ideal for offices, lounges, smoking rooms, daycare centers and any location where clean air is desired. Specific units come with a high-intensity, 19mm, quartz, germicidal UVC lamp (UVX-PR Series). Units also feature the ultra-bright LED “Smart Lamp System” visual display.

PRODUCT FEATURES

- Reduces bacteria, mold, and viruses
- Patent-pending, aluminum parabolic reflector directs and intensifies all UV energy to the desired area, ensuring a coil free of microbial growth
- Parabolic reflector can be rotated 360 degrees around the lamp
- Multi-Installation — installed above or inside the A-coil, keeps it free of biological contaminants, including mold and fungus
- Parabolic reflector is designed to protect the drain pan from UV degradation
- Lamp available in 12" and 18" lengths
- High-intensity, 19mm quartz germicidal UVC lamp
- Ultra-bright LED “Smart Lamp System” visual display
- CSA/NRTL certified



Goodman® UVX-PR Series – Object Purifier

**Full warranty details available at www.goodmanmfg.com*

GOODMAN® UVX OBJECT PURIFIER	DESCRIPTION	STANDARD PACK QTY
UVX-PR12	Ultraviolet Object Purifier- 12" Lamp	1
UVX-PR18	Ultraviolet Object Purifier- 18" Lamp	1
UVX-PR12 & PR18 - REPLACEMENT COMPONENTS		
UVX-LAMPPR12	Replacement Lamp for UVX-PR12	1
UVX-LAMPPR18	Replacement Lamp for UVX-PR18	1
UVX-00212SP	120/230V Ballast for UVX-PR12, UVX-PR18	1
UVX-07901	On/Off Switch for UVX-PR12, UVX-PR18	1
UVX-085	Female Connector for Ultraviolet Lamp	1

GOODMAN® UVX-DM SERIES - AIR PURIFIER

The Goodman® UVX-DM Series Ultraviolet Air Purifier is ideal for offices, lounges, smoking rooms, daycare centers and any location where clean air is desired. Specific units come with a high-intensity, 19mm, quartz, UVC/UVV germicidal oxidizing lamp (UVX-DM Series). Units also feature the ultra-bright LED "Smart Lamp System" visual display.

PRODUCT FEATURES

- Reduces chemical and biological odors and volatile organic compounds
- Larger, high-intensity UVC/UVV 19mm, quartz, dual-zone lamp for more purifying area
- Easy, one-lever lamp clamp
- Patented, high-efficiency aluminum Turbulator at reflector inlet slows contaminated air to be mixed around the UV lamp
- Aluminum reflector can be rotated in 90° increments on the back plate
- Designed to be installed in the return plenum
- Hard-wired to HVAC System UVX-DM1700
- In-duct installation for whole-house purification



Goodman® UVX-DM Series - Air Purifier

**Full warranty details available at www.goodmanmfg.com*

- "Plug & Play" Operation; pressure sensor automatically turns purifier on/off
- High-intensity, 19mm quartz germicidal UVC lamp and UVC/UVV germicidal oxidizing lamp
- Ultra-Bright LED "Smart Lamp System" visual display
- CSA/NRTL certified

GOODMAN® UVX AIR PURIFIER	DESCRIPTION	STANDARD PACK QTY
UVX-DM1700	Ultraviolet Air Purifier (Purify up to 1700 sq ft)	1
UVX-DM4000	Ultraviolet Air Purifier (Purify up to 4000 sq ft)	1
UVX-DM1700 - REPLACEMENT COMPONENTS		
UVX-LAMPDM1700	Replacement Lamp for UVX-DM1700	1
UVX-163	120/230V Ballast for UVX-DM1700	1
UVX-S307	Turbulator for UVX-DM1700	1
UVX-085	Female Connector for Ultraviolet Lamp	1
UVX-07901	On/Off Switch for UVX-DM1700	1
UVX-DM4000 - REPLACEMENT COMPONENTS		
UVX-LAMPDM4000	Replacement Lamp for UVX-DM4000	1
UVX-163	120/230V Ballast for UVX-DM4000	1
UVX-S307	Turbulator for UVX-DM4000	1
UVX-08101	Vacuum Switch for UVX-DM4000	1
UVX-085	Female Connector for Ultraviolet Lamp	1

GOODMAN® HRV/ERV

The Goodman® HRV/ERV Heat/Energy Recovery Ventilators are easy to install and service. The fully insulated cabinet with 1" high-density, polystyrene foam insulation prevents condensation and meets the requirements of the UL 94 HF. The unit is constructed of 22-gauge galvanized steel with a powder-coat paint finish. (HRV-150 and HRV-150D are 24-gauge.)

PRODUCT FEATURES

- Two German-manufactured, factory-balanced EBM™ external rotor motors with backward-curved blades
- Motors have permanently lubricated, sealed bearings
- Energy-efficient, aluminum heat recovery ventilator core and enthalpy energy recovery ventilator core are configured for efficient cross-flow ventilation and are designed to withstand extreme temperature variations (HRV-300D has two cores.)
- Washable, electrostatic, panel-type air filters (2)
- External, three-position (Low/Standby/Medium) rocker switch offers continuous ventilation
- Screw-type dial on electrical box allows supply air to be adjusted to match exhaust airflow and uses the "TRUE" motor adjustment feature (HRV-150D, HRV-200D only)
- Optional remote controls provide easy operation
- State-of-the-art control boards provide easy connection to existing HVAC equipment
- Advanced Defrost Cycle (HRV Series)



Goodman® HRV/ERV

*Full warranty details available at www.goodmanmfg.com

- Unit can be serviced through an easy-access, latched door
- Core conveniently slides out on channel guide system
- Easy maintenance via service light indicator and external electrical box
- Unit may be installed using the factory-supplied installation kit that includes mounting bolts or chains and hooks for suspension

GOODMAN® HRV/ERV	DESCRIPTION	STANDARD PACK QTY
ERV-150	Energy Recovery Ventilator 135 CFM	1
ERV-200	Energy Recovery Ventilator 155 CFM	1
HRV-150	Heat Recovery Ventilator 123 CFM	1
HRV-200	Heat Recovery Ventilator 168 CFM	1
HRV-150D	Heat Recovery Ventilator 123 CFM w/Recirculation	1
HRV-200D	Heat Recovery Ventilator 168 CFM w/Recirculation	1
HRV-300D	Heat Recovery Ventilator 247 CFM w/Recirculation	1
CONTROLS & ACCESSORIES		
DMFC	Digital Multi-Function Control	1
DMFC-REC	Digital Multi-Function Control with Recirculation	1
MD-2W	2-Wire, Low-Voltage Mechanical Dehumidistat	1

continued on next page

continued from previous page

GOODMAN® HRV/ERV	DESCRIPTION	STANDARD PACK QTY
MD-4W	4-Wire, Low-Voltage Mech Dehumidistat w/on-off SW	1
RT-15M	15 Minute Push Button Timer	1
CT-30M	30 Minute Crank Timer	1
AQS	Air Quality Sensor	1
SEH-6M	Metal Supply & Exhaust Hoods (6")	1
SEH-6P	Plastic Supply & Exhaust Hoods (6")	1

GOODMAN® HUM

The Goodman® HUM Bypass and Fan-Powered High-Capacity Humidifiers are a good choice for homes with warm-air heating systems. The durable thermoplastic cabinet resists rust, corrosion, and warping-it is UV-resistant plastic and is architectural gray.

PRODUCT FEATURES

- Designed to fit today's narrower plenums, as narrow as 10" (HUM-SFTBP) and 14" (HUM-LFTBP, HUM-FP)
- Reversible side panels with unique snap-lock fittings permit easy change; left-side or right-side bypass installation (HUM-SFTBP, HUM-LFTBP)
- Ideal for installations where the return air plenum is not easily accessible (HUM-FP)
- Summer Shut-off Damper reduces bypass air through the humidifier during the summer months (HUM-SFTBP, HUM-LFTBP)
- Improved wicking and water distribution system accommodates non-level plenums
- Low profile makes unit ideal where space is limited



Goodman® HUM

*Full warranty details available at www.goodmanmfg.com

GOODMAN® HUM	DESCRIPTION	STANDARD PACK QTY
HUM-SFTBP	Small Flow-Thru Bypass Humidifier - 14 GPD@120° F	1
HUM-LFTBP	Large Flow-Thru Bypass Humidifier - 18 GPD@120° F	1
HUM-FP	Fan Powered Humidifier - 19 GPD@120° F	1
HUM-HSTAT	Humidistat 24 volt (standard)	1
HUM-A50	Current Sensing Relay	1
HUM-SFTBP - REPLACEMENT COMPONENTS		
HUM-1725052	Replacement Evaporator Pad	12
HUM-1730094	Mounting Base	1
HUM-0602055	Drip Tray	1
HUM-1317091	Wick	1
HUM-1730089	Side Piece without Collar	1
HUM-0641171	Cover	1
HUM-0814148	Solenoid Valve 24V	1
HUM-1128005	Saddle Valve Assembly	1
HUM-1106030	Orifice (.020) Diameter	1

continued on next page

continued from previous page

GOODMAN® HUM	DESCRIPTION	STANDARD PACK QTY
HUM-1175028	Fill Tube	1
HUM-0814008	Transformer, 24V	1
HUM-1730124	PANEL, DAMPER SIDE	1
HUM-0803041	Screw, Cover Attach	1
HUM-1319051	Inline Water Filter	1
HUM-LFTBP - REPLACEMENT COMPONENTS		
HUM-1725051	Replacement Evaporator Pad	12
HUM-1730091	Mounting Base	1
HUM-0602055	Drip Tray	1
HUM-1317091	Wick	1
HUM-1730089	Side Piece without Collar	1
HUM-0641170	Cover	1
HUM-0814148	Solenoid Valve 24V	1
HUM-1128005	Saddle Valve Assembly	1
HUM-1106030	Orifice (.020) Diameter	1
HUM-1175028	Fill Tube	1
HUM-0814008	Transformer, 24V	1
HUM-1730124	Panel, Damper Side	1
HUM-0803041	Screw, Cover Attach	1
HUM-1319051	Inline Water Filter	1
HUM-FP - REPLACEMENT COMPONENTS		
HUM-1725051	Replacement Evaporator Pad	12
HUM-1730091	Mounting Base	1
HUM-0602055	Drip Tray	1
HUM-1317091	Wick	1
HUM-1730089	Side Piece without Collar (2 Required)	1
HUM-0641169	Cover with Vents	1
HUM-1318080	Blade, Fan, 10" Diameter	1
HUM-0814148	Solenoid Valve 24V	1
HUM-1128005	Saddle Valve Assembly	1
HUM-1106030	Orifice (.020) Diameter	1
HUM-0811123	Cord, Power Supply	1
HUM-0811122	2-Piece Connector Assembly	1
HUM-1721048	Motor, Fan	1

continued on next page

continued from previous page

GOODMAN[®] HUM	DESCRIPTION	STANDARD PACK QTY
HUM-0431034	Relay, Isolation	1
HUM-1730092	Shroud, Fan	1
HUM-1175028	Fill Tube	1
HUM-0803041	Screw, Cover Attach	1
HUM-1319051	Inline Water Filter	1

AMANA® ABB - BUILDER'S MEDIA

The Amana® brand ABB High-Efficiency Builder's Media Air Cleaner is designed to remove airborne contaminants down to 0.3 micron. This unit helps protect and prolong the operating efficiency of the heating and cooling equipment.

PRODUCT FEATURES

- High-efficiency MERV 11 Media Filter removes household particles down to 0.3 micron
- Perfect-fit filter allows no air gaps
- User-friendly, easy-to-change filter
- Reversible airflow; mounts in any position
- Easy to replace with an Amana® brand High-efficiency Electronic Air Cleaner, capable of removing contaminants as small as 0.01 micron
- Heavy-gauge galvanized steel cabinet with powder-painted snap-on door
- Vertical or horizontal installation
- Pre-drilled holes facilitate mounting the unit to duct work or air-handling system



Amana® ABB - Builder's Media

**Full warranty details available at www.amana-hac.com*

AMANA® ABB BUILDER'S MEDIA	DESCRIPTION	STANDARD PACK QTY
ABB1625	16" x 25" Builder's Media Air Cleaner 1400 CFM	1
ABB2025	20" x 25" Builder's Media Air Cleaner 2000 CFM	1
M1-1056	Media Filter for AMU1625/ABB1625	3
M8-1056	Media Filter for AMU2025/ABB2025/ARAM2000	3

AMANA® AMU

The Amana® brand AMU High-Efficiency, MERV 11 Charged-Media Retrofit Air Cleaner is designed to remove air contaminants down to 0.3 micron. The AMU helps protect and prolong the operating efficiency of heating and cooling equipment. Its perfect fit allows no air gaps, thereby maximizing the system's ability to clean the air. The AMU's reversible airflow allows the filter to be mounted in any position.

PRODUCT FEATURES

- High-efficiency MERV 11 Media Filter removes air contaminants down to 0.3 micron
- Reversible airflow; mounts in any position
- Perfect-fit filter allows no air gaps, maximizing the system's ability to clean the air
- Easy-to-change filter
- Removes atmospheric and household particles
- Easily upgrades to an Amana® brand high-efficiency electronic air cleaner
- Heavy-gauge galvanized steel resists corrosion
- Durable, powder-paint finish resists corrosion
- Vertical or horizontal installation



Amana® AMU

*Full warranty details available at www.amana-hac.com

- Pre-drilled holes facilitate mounting the unit to duct work or air-handling system

AMANA® AMU	DESCRIPTION	STANDARD PACK QTY
AMU1620A	16" x 20" Media Air Cleaner 1200 CFM	1
AMU1625A	16" x 25" Media Air Cleaner 1400 CFM	1
AMU2020A	20" x 20" Media Air Cleaner 1400 CFM	1
AMU2025A	20" x 25" Media Air Cleaner 2000 CFM	1
M0-1056	Media Filter for AMU1620	3
M1-1056	Media Filter for AMU1625/ABB1625	3
M2-1056	Media Filter for AMU2020	3
M8-1056	Media Filter for AMU2025/ABB2025/ARAM2000	3
CARBON REPLACEMENT FILTERS/DAX		
1156-3	Carbon Filters ASAS - 10,11/AMU 1620,1625	1
1856-3	Carbon Filters ASAS - 12, 18/AMU 2020, 2025	1

AMANA® A13MU

- Removes airborne contaminants down to 0.3 micron on the first pass of air.
- Filter material uses both charged fibers and traditional mechanical filtration principles. The charged fibers allow the media to achieve MERV 13 levels upon installation.
- Extra deep, 5¼", 26-pleat filter contains more media material than other filters on the market. More surface area means more collection area, longer filter life, and lower static pressure.
- Filter fits snugly into cabinet
- User-friendly, easy-to-change filter cartridge
- Filter lasts up to one year in standard applications
- Reversible airflow
- Mounts in any position
- Easily upgrades to the new Goodman "D Series" High-Efficiency Electronic Air Cleaner, which is capable of removing harmful contaminants as small as 0.01 micron (1/2,540,000 of an inch)



Amana® A13MU

*Full warranty details available at www.amana-hac.com

CABINET FEATURES

- Heavy-gauge galvanized-steel cabinet resists corrosion
- Trouble-free vertical or horizontal installation
- Durable powder-paint finish on door resists corrosion.

AMANA® A13MU	DESCRIPTION	STANDARD PACK QTY
A13MU1625	Green Efficiency Media Retrofit Air Cleaner 16" x 25" x 5"	ea
A13MU2025	Green Efficiency Media Retrofit Air Cleaner 20" x 25" x 5"	ea
A1-1056	MERV 13 Media Repl Filter (16" x 25")	ea
A8-1056	MERV 13 Media Repl Filter (20" x 25")	ea
EACK1625A	Upgrade Kit to ASASD EAC for A13MU & AMU 16" x 25"	ea
EACK2025A	Upgrade Kit to ASASD EAC for A13MU & AMU 20" x 25"	ea

AMANA® ARAM - RIGHT-ANGLE

PRODUCT FEATURES

- High-efficiency MERV 11 Media Filter removes atmospheric and household particles down to 0.3 micron
- Reversible airflow
- Perfect-fit filter allows no air gaps
- User-friendly, easy-to-change filter means no fussing with complicated combs or brackets
- Adjustable inlet duct opening replaces need for field-forming transition, significantly reducing installation time



Amana® ARAM - Right-Angle

**Full warranty details available at www.amana-hac.com*

AMANA® ARAM RIGHT-ANGLE	DESCRIPTION	STANDARD PACK QTY
ARAM2000	Right Angle Media Air Cleaner 2000 CFM	1
M8-1056	Media Filter for AMU2025 /ABB2025/ARAM2000	3

AMANA® A1EAC - 1" CHARGED MEDIA

The Amana® brand A1EAC 1" Charged-Media Electronic Air Cleaner provides a 24-volt, polarized charge on the media pads to capture and remove airborne particles as small as 0.01 micron. Contributing to the air cleaner's reliable operation is its carbon-graphite center charging screen, which is permanently mounted to the air cleaner frame. Attached to each of the frame's four corners, internal center screen spacers are open-faced to maximize airflow. For added durability, a one-piece, injection-molded power head is "capped" and sealed to be watertight.

PRODUCT FEATURES

- Environmentally safe - does not produce hazardous ozone or positive ions
- Fits into any one-inch filter opening
- Quiet operation
- Fully electronic, reliable, high-efficiency carbon-graphite center screen removes small airborne particles
- Efficiency increases as the air cleaner operates
- Designed to operate with constant power or with the system's fan
- Easily removable, high-density, multi-layered replacement media pads
- Fits all central HVAC residential systems



Amana® A1EAC— 1" Charged Media

**Full warranty details available at www.amana-hac.com*

- Stainless-steel latches provide durability
- Corrosion-resistant construction
- Open-face design maintains low static pressure
- Independently tested and certified
- MERV-10 Rated Efficiency (ASHRAE Standard 52.2)

AMANA® A1EAC 1" CHARGED MEDIA	DESCRIPTION	STANDARD PACK QTY
A1EAC-1224	12" x 24" x 1" Electronic Air Cleaner	3
A1EAC-1420	14" x 20" x 1" Electronic Air Cleaner	3
A1EAC-1424	14" x 24" x 1" Electronic Air Cleaner	3
A1EAC-1425	14" x 25" x 1" Electronic Air Cleaner	3
A1EAC-1430	14" x 30" x 1" Electronic Air Cleaner	3
A1EAC-1520	15" x 20" x 1" Electronic Air Cleaner	3
A1EAC-1620	16" x 20" x 1" Electronic Air Cleaner	3
A1EAC-1624	16" x 24" x 1" Electronic Air Cleaner	3
A1EAC-1625	16" x 25" x 1" Electronic Air Cleaner	3
A1EAC-1820	18" x 20" x 1" Electronic Air Cleaner	3
A1EAC-2020	20" x 20" x 1" Electronic Air Cleaner	3

continued on next page

continued from previous page

AMANA® A1EAC 1" CHARGED MEDIA	DESCRIPTION	STANDARD PACK QTY
A1EAC-2024	20" x 24" x 1" Electronic Air Cleaner	3
A1EAC-2025	20" x 25" x 1" Electronic Air Cleaner	3
A1EAC-2424	24" x 24" x 1" Electronic Air Cleaner	3
A1EAC-2030	20" x 30" x 1" Electronic Air Cleaner	3
A1EAC-2036	20" x 36" x 1" Electronic Air Cleaner	3
REPLACEMENT MEDIA		
GA1MEDIA-1224	12" x 24" Replacement Media - 3 Sets	3
GA1MEDIA-1420	14" x 20" Replacement Media - 3 Sets	3
GA1MEDIA-1424	14" x 24" Replacement Media - 3 Sets	3
GA1MEDIA-1425	14" x 25" Replacement Media - 3 Sets	3
GA1MEDIA-1430	14" x 30" Replacement Media - 3 Sets	3
GA1MEDIA-1520	15" x 20" Replacement Media - 3 Sets	3
GA1MEDIA-1620	16" x 20" Replacement Media - 3 Sets	3
GA1MEDIA-1624	16" x 24" Replacement Media - 3 Sets	3
GA1MEDIA-1625	16" x 25" Replacement Media - 3 Sets	3
GA1MEDIA-1820	18" x 20" Replacement Media - 3 Sets	3
GA1MEDIA-2020	20" x 20" Replacement Media - 3 Sets	3
GA1MEDIA-2024	20" x 24" Replacement Media - 3 Sets	3
GA1MEDIA-2025	20" x 25" Replacement Media - 3 Sets	3
GA1MEDIA-2424	24" x 24" Replacement Media - 3 Sets	3
GA1MEDIA-2030	20" x 30" Replacement Media - 3 Sets	3
GA1MEDIA-2036	20" x 36" Replacement Media - 3 Sets	3
GA1MEDIA-ROLL	Replacement Media Roll 30" x 30"	3

AMANA® ASAS

The Amana® brand ASAS High-Efficiency Electronic Air Cleaner is designed to remove air contaminants down to 0.01 micron. The ASAS helps protect and prolong the operating efficiency of the heating and cooling equipment. An air-proving switch automatically cycles the air cleaner on and off with the system fan as well as detects airflow and energizes the air cleaner. With a four-stage air cleaning process, pre-filters, charging section, grounding plates, and carbon filters, ASAS air cleaners efficiently remove atmospheric and household particles.

PRODUCT FEATURES

- Environmentally friendly lifetime filtration system electronically removes air pollutants down to 0.01 micron
- Collecting cells constructed of heavy-gauge aluminum for durability and ease of maintenance
- Pre-filters constructed of aluminum mesh to prevent lint and large particles from entering collecting cells
- Activated carbon filters help remove odors
- Air-proving switch cycles the air cleaner on/off with the system fan
- Equipped with a variable resistor (potentiometer) to adjust high-voltage output; output is preset for optimum efficiency
- Removable power box contains the ON/OFF switch, performance indicator light, safety interlock switch, high-voltage power board, and air-proving switch
- Heavy-gauge galvanized steel resists corrosion and provides trouble-free vertical or horizontal installation
- Durable, powder-paint finish resists corrosion
- Dual indicator lights show unit operation at a glance
- Performance indicator light indicates high voltage to collecting cells, ensuring the air cleaner is operating properly
- Cell guides ensure proper placement of collecting cells in cabinet



Amana® ASAS

*Full warranty details available at www.amana-hac.com

AMANA® ASAS	DESCRIPTION	STANDARD PACK QTY
ASAS-10	Electronic Air Cleaner 16" x 20" 1200 CFM	1
ASAS-11	Electronic Air Cleaner 16" x 25" 1400 CFM	1
ASAS-12	Electronic Air Cleaner 20" x 20" 1400 CFM	1
ASAS-18	Electronic Air Cleaner 20" x 25" 2000 CFM	1
ASAS10-2	Electronic Air Cleaner 16" x 20" 1200 CFM - 240V	1
ASAS11-2	Electronic Air Cleaner 16" x 25" 1400 CFM - 240V	1
ASAS12-2	Electronic Air Cleaner 20" x 20" 1400 CFM - 240V	1
ASAS18-2	Electronic Air Cleaner 20" x 25" 2000 CFM - 240V	1
ASAS-10PC	Electronic Air Cleaner 16" x 20" w/Power Cord	1
ASAS-11PC	Electronic Air Cleaner 16" x 25" w/Power Cord	1

continued on next page

continued from previous page

AMANA® ASAS	DESCRIPTION	STANDARD PACK QTY
ASAS-12PC	Electronic Air Cleaner 20" x 20" w/Power Cord	1
ASAS-18PC	Electronic Air Cleaner 20" x 25" w/Power Cord	1
ASAS-12PC	Electronic Air Cleaner 20" x 20" w/Power Cord	1
ASAS-18PC	Electronic Air Cleaner 20" x 25" w/Power Cord	1
	CARBON REPLACEMENT FILTERS/DAX	
1156-3	Carbon Filters ASAS - 10,11/AMU 1620,1625	1
1856-3	Carbon Filters ASAS - 12, 18/AMU 2020, 2025	1
FS9900	32oz DAX Detergent, Spray Bottle	6

AMANA® AGM - GRILLE MOUNT

The Amana® brand AGM High-Efficiency Grille-Mount Electronic Air Cleaner is designed to remove airborne contaminants down to 0.01 micron. The AGM Series helps protect and prolong the operating efficiency of the heating and cooling equipment.

PRODUCT FEATURES

- Pre-filters (2) constructed of aluminum mesh
- Collecting cells (2) constructed of heavy-gauge aluminum
- Automatic interlock switch disconnects power when door is opened
- Air-proving switch allows for quick wiring; automatically cycles air cleaner on/off with the system fan
- Performance indicator light (green LED) indicates high voltage to collecting cells, ensuring air cleaner is operating properly at a glance
- Solid-state power board equipped with a variable resistor (potentiometer) to adjust high-voltage output
- Durable, powder-paint finish on heavy-gauge steel
- Wall or ceiling-mount installation
- Hinged, swing door allows easy access to filters



Amana® AGM - Grille Mount

**Full warranty details available at www.amana-hac.com*

- Plastic intake grille easy to wipe clean
- Holes provided to facilitate mounting to duct work
- Easily installs on the wall or ceiling in the main return duct of a central forced-air heating/cooling system

AMANA® AGM GRILLE MOUNT	DESCRIPTION	STANDARD PACK QTY
AGM20AS	Return Grille Mount Electronic Air Cleaner	1
FS9900	32oz DAX Detergent, Spray Bottle	6

AMANA® AHEPA/ADMHEPA

The Amana® brand AHEPA/ADMHEPA Whole-House True HEPA Air Cleaners are designed to help protect and prolong the operating efficiency of the heating and cooling equipment. The activated carbon pre-filter and the optional after-filter removes odors, atmospheric and household particles. While the AHEPA models are easily installed in a free-standing position, the ADMHEPA models have various installation options (duct-mounted, collar-mounted, or free-standing).

PRODUCT FEATURES

- Certified true HEPA (High-Efficiency Particulate Air) filter
- 99.97% efficient at removing particles down to 0.3 micron
- Activated carbon pre-filter
- Carbon VOC (Volatile Organic Compound) filter (included with Model AHEPA 550)
- Removes atmospheric and household particles
- Easy-to-change filters
- Power cord for plug-in; no electrical wiring
- Heavy-gauge steel cabinet
- Versatile installation
 - AHEPA: free-standing, ceiling-mounted, or wall-mounted
 - ADMHEPA: free-standing, duct-mounted, or collar-mounted



ADMHEPA Model

AHEPA Model

Amana® AHEPA/ADMHEPA

*Full warranty details available at www.amana-hac.com

- Powder-paint finish
- Corrosion-resistant cabinet provides rigid installation and durability

AMANA® AHEPA/ADMHEPA	DESCRIPTION	STANDARD PACK QTY
AHEPA350	Whole-House HEPA Filtration Unit 245 CFM	1
AHEPA450	Whole-House HEPA Filtration Unit 330 CFM	1
AHEPA550-3	Whole-House HEPA Filtration Unit 540 CFM	1
AHEPA650	Whole-House HEPA Filtration Unit 560 CFM	1
ADMHEPA400	Duct Mount HEPA Filtration Unit 320 CFM	1
AHEPA350 REPLACEMENT FILTERS		
W3-0840	HEPA Filter Cylinder - AHEPA 350	1
W3-0855	Carbon Pre-filter Blanket - AHEPA 350	1
W3-0810	Inner Carbon VOC Blanket - AHEPA 350	1
AHEPA450 REPLACEMENT FILTERS		
W4-0840	HEPA Filter Cylinder - AHEPA 450	1
W4-0855	Carbon Pre-filter Blanket - AHEPA 450	1
W4-0810	Inner Carbon VOC Blanket - AHEPA 450	1

continued on next page

continued from previous page

AMANA® AHEPA/ADMHEPA	DESCRIPTION	STANDARD PACK QTY
AHEPA550-3 REPLACEMENT FILTERS		
W5-0860	HEPA Filter Cylinder - AHEPA550 (Old Style)	1
W5-0860-3	HEPA Filter Cylinder - AHEPA 550-3	1
W5-0810	Carbon Pre-filter - AHEPA 550-3	1
W5-0820	Carbon VOC After-filter - AHEPA 550-3	1
W5-0885	Carbon/Potass./Permanganate VOC After-filter	1
AHEPA650 REPLACEMENT FILTERS		
W6-0840	HEPA Filter Cylinder - AHEPA 650	1
W6-0855	Carbon Pre-filter Blanket - AHEPA 650	1
W6-0810	Inner Carbon VOC Blanket - AHEPA 650	1
ADMHEPA400 REPLACEMENT FILTERS		
DMH4-0400	HEPA Replacement Filter - ADMHEPA400	1
DMH4-0810	Merv 8 Pre-filter - ADM HEPA 400	1
DMH4-0855	Carbon Pre-filter - ADM HEPA 400	1

AMANA® DMH900

The Amana® brand DMH900 Whole-House Air Cleaner uses HEPA, UVC germicidal lights (non-ozone producing) and CinQuartz® Photo-Catalytic Oxidation to filter and sterilize the air. This unit removes and destroys allergens and atmospheric dust, as well as biological and chemical contaminants and odors. The DMH900 can be mounted in a variety of positions: duct-mounted, collar-mounted, or free-standing.

PRODUCT FEATURES

- 99.97% efficient at removing particles down to 0.3 micron
- Two UVC Germicidal Lights enclosed in an anodized UV Reflector to intensify UV rays
- The UVC light and CinQuartz® Photo-Catalytic Oxidation (PCO) filter decompose organic materials into basic molecules such as H₂O and CO₂
- Carbon Pre-filter removes lint, odors and hair before they enter HEPA filter
- Motor delivers 250 CFM of clean air, without adding static pressure to the HVAC system
- Versatile installation - duct-mounted, collar-mounted, or free-standing
- One piece steel cabinet wrap
- Powder-coat paint finish
- Pre-punched openings and mounting template for easier installation; no external ducting required



DMH900

*Full warranty details available at www.amana-hac.com

AMANA® DMH900	DESCRIPTION	STANDARD PACK QTY
DMH-900	Duct Mount HEPA, UV & Photo Catalytic Air Filter	1
DMH4-0400	99.97% HEPA Media Filter	1
DM900-0855	Pre-filter Carbon	1
DMH4-1002	Mounting Kit: (2) 8" Collars with 16 Screws	1
DMH4-1004	Mounting Kit: (4) 8" Collars with 32 Screws	1
DM900-0191	UV Lamp: Includes lamp support clip	1
DM900-0450	Photo-Catalytic Oxidation (PCO) Filter	1
DM900-0810	Final Filter, Carbon/ Potassium Permanganate	1
DM900-1002	UV Lamp & PCO Filter Kit: contains 2 UV lamps, 2 lamp support clips and IPCO filter, gloves, alcohol wipe	1

AMANA® UVX-PR SERIES – OBJECT PURIFIER

The Amana® brand UVX-PR Series Ultraviolet Object Purifiers are ideal for offices, lounges, smoking rooms, daycare centers, and any location where clean air is desired. Specific units come with a high-intensity, 19mm, quartz, germicidal UVC lamp (UVX-PR Series). Units also feature the ultra-bright LED “Smart Lamp System” visual display.

PRODUCT FEATURES

- Reduces bacteria, mold, and viruses
- Patent-pending, aluminum parabolic reflector directs and intensifies all UV energy to the desired area, ensuring a coil free of microbial growth
- Parabolic reflector can be rotated 360 degrees around the lamp
- Multi-position Installation - installed above or inside the A-coil, keeps it free of biological contaminants, including mold and fungus
- Parabolic reflector is designed to protect the drain pan from UV degradation
- Lamp available in 12" and 18" lengths



Amana® UVX-PR Series – Object Purifier

**Full warranty details available at www.amana-hac.com*

- High-intensity, 19mm quartz germicidal UVC lamp
- Ultra-Bright LED “Smart Lamp System” visual display
- CSA/NRTL certified

AMANA® UVX OBJECT PURIFIER	DESCRIPTION	STANDARD PACK QTY
UVX-PR12	Ultraviolet Object Purifier- 12" Lamp	1
UVX-PR18	Ultraviolet Object Purifier- 18" Lamp	1
UVX-PR12 & PR18 - REPLACEMENT COMPONENTS		
UVX-LAMPPR12	Replacement Lamp for UVX-PR12	1
UVX-LAMPPR18	Replacement Lamp for UVX-PR18	1
UVX-00212SP	120/230V Ballast for UVX-PR12, UVX-PR18	1
UVX-07901	On/Off Switch for UVX-PR12, UVX-PR18	1
UVX-085	Female Connector for Ultraviolet Lamp	1

AMANA® UVX-DM SERIES - AIR PURIFIER

The Amana® brand UVX-DM Series Ultraviolet Air Purifier is ideal for offices, lounges, smoking rooms, daycare centers, and any location where clean air is desired. Specific units come with a high-intensity, 19mm, quartz, UVC/UVV germicidal oxidizing lamp (UVX-DM Series). Units also feature the ultra-bright LED “Smart Lamp System” visual display.

PRODUCT FEATURES

- Reduces chemical and biological odors and volatile organic compounds
- Larger, high-intensity UVC/UVV 19mm, quartz, dual-zone lamp for more purifying area
- Easy, one-lever lamp clamp
- Patented, high-efficiency aluminum turbulator at reflector inlet slows contaminated air to be mixed around the UV lamp
- Aluminum reflector can be rotated in 90° increments on the back plate
- Designed to be installed in the return plenum
- Hard-wired to HVAC System UVX-DM1700
- In-duct installation for whole-house purification
- “Plug & Play” operation; pressure sensor automatically turns purifier on and off
- High-intensity, 19mm quartz UVC/UVV germicidal oxidizing lamp
- Ultra-Bright LED “Smart Lamp System” visual display
- CSA/NRTL certified



Amana® UVX-DM Series - Air Purifier

**Full warranty details available at www.amana-hac.com*

AMANA® UVX AIR PURIFIER	DESCRIPTION	STANDARD PACK QTY
UVX-DM1700	Ultraviolet Air Purifier (Purify up to 1700 sq ft)	1
UVX-DM4000	Ultraviolet Air Purifier (Purify up to 4000 sq ft)	1
UVX-DM1700 - REPLACEMENT COMPONENTS		
UVX-LAMPDM1700	Replacement Lamp for UVX-DM1700	1
UVX-163	120/230V Ballast for UVX-DM1700	1
UVX-S307	Turbulator for UVX-DM1700	1
UVX-085	Female Connector for Ultraviolet Lamp	1
UVX-07901	On/Off Switch for UVX-DM1700	1
UVX-DM4000 - REPLACEMENT COMPONENTS		
UVX-LAMPDM4000	Replacement Lamp for UVX-DM4000	1
UVX-163	120/230V Ballast for UVX-DM4000	1
UVX-S307	Turbulator for UVX-DM4000	1
UVX-08101	Vacuum Switch for UVX-DM4000	1
UVX-085	Female Connector for Ultraviolet Lamp	1

AMANA® HRV/ERV

The Amana® brand HRV/ERV Heat/Energy Recovery Ventilators are easy to install and service. The fully insulated cabinet with 1" high-density, polystyrene foam insulation prevents condensation and meets the requirements of the UL 94 HF. Unit is constructed of galvanized-steel and finished with a powder-paint finish.

PRODUCT FEATURES

- Energy-efficient aluminum HRV core and enthalpy ERV core are configured for efficient cross-flow ventilation
- Designed to withstand extreme temperature variations
- Factory-balanced EBM™ external rotor motors with backward-curved blades
- External, three-position (Low/Stand-by/Medium) rocker switch for continuous ventilation
- State-of-the-art control boards provide easy connection to existing HVAC equipment
- Screw-type dial on electrical box allows supply air to be adjusted to match exhaust airflow
- Optional remote controls provide easy operation
- Easy-access door, service light indicator, and external electrical box for easy service and maintenance
- Advanced Defrost Cycle (HRV Series)
- Two washable, electrostatic, panel-type air filters
- Fully insulated cabinet with 1" high-density, polystyrene foam insulation prevents condensation and meets the requirements of the UL 94 HF
- Galvanized-steel cabinet with powder-paint finish
- Permanently lubricated, sealed motor bearings
- Factory-supplied installation kit



Amana® HRV/ERV

*Full warranty details available at www.amana-hac.com

AMANA® HRV/ERV	DESCRIPTION	STANDARD PACK QTY
ERV-150	Energy Recovery Ventilator 135 CFM	1
ERV-200	Energy Recovery Ventilator 155 CFM	1
HRV-150	Heat Recovery Ventilator 123 CFM	1
HRV-200	Heat Recovery Ventilator 168 CFM	1
HRV-150D	Heat Recovery Ventilator 123 CFM w/Recirculation	1
HRV-200D	Heat Recovery Ventilator 168 CFM w/Recirculation	1
HRV-300D	Heat Recovery Ventilator 247 CFM w/Recirculation	1
CONTROLS & ACCESSORIES		
DMFC	Digital Multi-Function Control	1
DMFC-REC	Digital Multi-Function Control with Recirculation	1
MD-2W	2-Wire, Low-Voltage Mechanical Dehumidistat	1
MD-4W	4-Wire, Low-Voltage Mech Dehumidistat w/on-off SW	1

continued on next page

continued from previous page

AMANA® HRV/ERV	DESCRIPTION	STANDARD PACK QTY
RT-15M	15 Minute Push Button Timer	1
CT-30M	30 Minute Crank Timer	1
AQS	Air Quality Sensor	1
SEH-6M	Metal Supply & Exhaust Hoods (6")	1
SEH-6P	Plastic Supply & Exhaust Hoods (6")	1

AMANA® HUM

The Amana® brand HUM Bypass and Fan-Powered High-Capacity Humidifiers are a good choice for homes with warm-air heating systems. The durable thermoplastic cabinet resists rust, corrosion, and warping. It is UV-resistant plastic is architectural gray.

PRODUCT FEATURES

- Designed to fit today's narrower plenums, as narrow as 10" and 14"
- Reversible side panels with snap-lock fittings permit easy change; left- or right-side bypass installation
- Ideal for installations where the return-air plenum is not easily accessible
- Summer shut-off damper reduces bypass air through the humidifier during the summer months, allowing the air conditioner to run more efficiently and economically
- Improved wicking and water distribution system accommodates non-level plenums
- Low profile makes unit ideal where space is limited
- Evaporator pad dispenses water evenly in front of a warm air stream to evaporate and efficiently raise the humidity level



AMANA® HUM

*Full warranty details available at www.amana-hac.com

- Durable, UV-resistant thermoplastic cabinet resists rust, corrosion, and warping

AMANA® HUM	DESCRIPTION	STANDARD PACK QTY
HUM-SFTBP	Small Flow-Thru Bypass Humidifier - 14 GPD@120° F	1
HUM-LFTBP	Large Flow-Thru Bypass Humidifier - 18 GPD@120° F	1
HUM-FP	Fan Powered Humidifier - 19 GPD@120° F	1
HUM-HSTAT	Humidistat 24 volt (standard)	1
HUM-A50	Current Sensing Relay	1
HUM-SFTBP - REPLACEMENT COMPONENTS		
HUM-1725052	Replacement Evaporator Pad	12
HUM-1730094	Mounting Base	1
HUM-0602055	Drip Tray	1
HUM-1317091	Wick	1
HUM-1730089	Side Piece without Collar	1
HUM-0641171	Cover	1
HUM-0814148	Solenoid Valve 24V	1
HUM-1128005	Saddle Valve Assembly	1
HUM-1106030	Orifice (.020) Diameter	1

continued on next page

continued from previous page

AMANA® HUM	DESCRIPTION	STANDARD PACK QTY
HUM-1175028	Fill Tube	1
HUM-0814008	Transformer, 24V	1
HUM-1730124	PANEL, DAMPER SIDE	1
HUM-0803041	Screw, Cover Attach	1
HUM-1319051	Inline Water Filter	1
HUM-LFTBP - REPLACEMENT COMPONENTS		
HUM-1725051	Replacement Evaporator Pad	12
HUM-1730091	Mounting Base	1
HUM-0602055	Drip Tray	1
HUM-1317091	Wick	1
HUM-1730089	Side Piece without Collar	1
HUM-0641170	Cover	1
HUM-0814148	Solenoid Valve 24V	1
HUM-1128005	Saddle Valve Assembly	1
HUM-1106030	Orifice (.020) Diameter	1
HUM-1175028	Fill Tube	1
HUM-0814008	Transformer, 24V	1
HUM-1730124	Panel, Damper Side	1
HUM-0803041	Screw, Cover Attach	1
HUM-1319051	Inline Water Filter	1
HUM-FP - REPLACEMENT COMPONENTS		
HUM-1725051	Replacement Evaporator Pad	12
HUM-1730091	Mounting Base	1
HUM-0602055	Drip Tray	1
HUM-1317091	Wick	1
HUM-1730089	Side Piece without Collar (2 Required)	1
HUM-0641169	Cover with Vents	1
HUM-1318080	Blade, Fan, 10" Diameter	1
HUM-0814148	Solenoid Valve 24V	1
HUM-1128005	Saddle Valve Assembly	1
HUM-1106030	Orifice (.020) Diameter	1
HUM-0811123	Cord, Power Supply	1
HUM-0811122	2-Piece Connector Assembly	1
HUM-1721048	Motor, Fan	1

continued on next page

continued from previous page

AMANA[®] HUM	DESCRIPTION	STANDARD PACK QTY
HUM-0431034	Relay, Isolation	1
HUM-1730092	Shroud, Fan	1
HUM-1175028	Fill Tube	1
HUM-0803041	Screw, Cover Attach	1
HUM-1319051	Inline Water Filter	1

GOODMAN - VALUE, PREMIUM, COMMERCIAL

PRODUCT FEATURES

- Large easy to read display
- Programmable and non-programmable
- Residential and commercial controls
- 1/1 non-programmable to 3/2 7 day multi event
- Unique features
- Private labeling program available
- Myriad of accessories



Goodman - Value, Premium, Commercial

GOODMAN® CONTROLS	DESCRIPTION	STANDARD PACK QTY
GOODMAN VALUE CONTROLS		
TSTATG1100	Tstat - Goodman 1H/1C Non Prog	6
TSTATG2100	Tstat Goodman 2H/1C Hp Non Prog	6
TSTATG1152	Tstat Goodman 1H/1C 5+2 Prog	6
TSTATG2152	Tstat Goodman 2H/1C Hp 52 Prog	6
GOODMAN PREMIUM CONTROLS		
TSTATG2111	Tstat Goodman 2H/1C 1Day Prog	6
TSTATG3272	Tstat Goodman 3H/2C 7Day Prog	6
TSTATG3273	Tstat Goodman 3H/2C 7Day Prog	6
GOODMAN COMMERCIAL CONTROLS		
TSTATG2200C	T-Stat Goodman 2H/2C Non Prog	6
TSTATG3271C	Tstat Goodman 3H/2C 7Day Prog	6
TSTATG3272C	Tstat Goodman 3H/2C 7Day Prog	6

continued on next page

continued from previous page

GOODMAN® CONTROLS	DESCRIPTION	STANDARD PACK QTY
	GOODMAN CONTROLS ACCESSORIES	
TSTATGAC0423	Wall Plate 1100 1152 2100 2152	ea
TSTATGAC0401	Goodman- Indoor Sensor - Wired	ea
TSTATGAC0400	Goodman - Outdoor Sensor - Wired	ea
TSTATGAC0410	Goodman- Add-A-Wire	ea
TSTATGAC0414RF	Goodman - Wireless Sensor	ea
TSTATGAC0414REC	Goodman- Wireless Receiver	ea
TSTATGAC0430	Goodman- Humidity Module	ea
TSTATGAC0431	Goodman Remote Control & Rec	ea
TSTATGAC0432	Goodman - EZ-Programmer	ea
TSTATGAC0433	Goodman - Comfort Call	ea
TSTATGAC0620	Goodman - Locking Cover	ea

AMANA - VALUE, PREMIUM, COMMERCIAL

PRODUCT FEATURES

- Large easy to read display
- Programmable and non-programmable
- Residential and commercial controls
- 1/1 non-programmable to 3/2 7 day multi event
- Unique features
- Private labeling program available
- Myriad of accessories



Amana - Value, Premium, Commercial

AMANA® CONTROLS	DESCRIPTION	STANDARD PACK QTY
AMANA VALUE CONTROLS		
TSTAT1100	Tstat Amana 1H/1C Non Prog	
TSTAT2100	Tstat Amana 2H/1C Hp Non Prog	6
TSTAT1152	Tstat Amana 1H/1C 5+2 Prog	6
TSTAT2152	Tstat -Amana 2H/1C Hp 5+2 Prog	6
AMANA PREMIUM CONTROLS		
TSTAT2111	Tstat -Amana 2H/1C 1Day Prog	6
TSTAT3272	Tstat Amana 3H/2C 7Day Prog	6
TSTAT3273	Tstat -Amana 3H/2C 7Day Prog	6
AMANA COMMERCIAL CONTROLS		
TSTAT2200C	Tstat -Amana 2H/2C Non Prog	6
TSTAT3271C	Tstat Amana 3H/2C 7Day Prog	6
TSTAT3272C	Tstat -Amana 3H/2C 7Day Prog	6

continued on next page

continued from previous page

AMANA® CONTROLS	DESCRIPTION	STANDARD PACK QTY
	AMANA CONTROLS ACCESSORIES	
TSTATAAC0423	Wall Plate 1100 2100 1152 2152	ea
TSTATAAC0401	Amana Indoor Sensor- Wired	ea
TSTATAAC0400	Amana Outdoor Sensor - Wired	ea
TSTATAAC0410	Amana Add-A-Wire	ea
TSTATAAC0414RF	Amana Wireless Sensor	ea
TSTATAAC0414REC	Amana Wireless Receiver	ea
TSTATAAC0430	Amana -Humidity Module	ea
TSTATAAC0431	Amana Remote Control & Rec	ea
TSTATAAC0432	Amana EZ-Programmer	ea
TSTATAAC0433	Amana Comfort Call	ea
TSTATAAC0620	Amana -Locking Cover	ea

UNIT PROTECTIVE COVERS

PRODUCT FEATURES

- Protects outdoor units from moisture, elements and UV
- Sturdy UV resistant vinyl
- Featuring "Innerflow System" reducing buildup of moisture
- Prevents rain and snow from reaching the unit
- Allows for free movement of air while blocking particles, rain and snow from encountering the unit and coil surface
- Goodman and Amana brand stickers included for easy on-site labeling



Unit Protective Covers

UNIT PROTECTIVE COVERS	DESCRIPTION	STANDARD PACK QTY
GAIC-2628	Unit Protective Cover 26" x 26" x 28"	1
GAIC-2632	Unit Protective Cover 26" x 26" x 32"	1
GAIC-2932	Unit Protective Cover 29" x 29" x 32"	1
GAIC-2936	Unit Protective Cover 29" x 29" x 36½"	1
GAIC-3536	Unit Protective Cover 35½" x 35½" x 36½"	1
GAIC-2929	Unit Protective Cover 29"x 29" x 28"	1
GAIC-2940	Unit Protective Cover 29" x 29" x 39"	1

TIE STRAPS & DUCT STRAPS

PRODUCT FEATURES

- Sturdy nylon construction
- Excellent for joining flex duct to metal connections - snugly and securely
- Natural color
- Variety of sizes
- Black poly duct strap excellent for cradling flex duct runs
- Attaches easily to rafters or joist for simpler and easier installation of flex duct



Tie Straps & Duct Straps

TIE STRAPS & DUCT STRAPS	DESCRIPTION	STANDARD PACK QTY
CT36-175	36" Heavy Duty Tie Strap - Natural 50bag	500
CT48-175	48" Heavy Duty Tie Strap - Natural 50bag	500
710-100-EW	PP Black Duct Strap -1.75"	24

MCDANIEL METAL PRODUCTS

McDaniel offers a wide variety of high quality HVAC metals products for any Goodman/Amana gas furnace, air handler, and package unit installation.

PRODUCT FEATURES

- Accommodator filter bases
- Labor saver filter housing
- Supply and return plenums
- Drain pans
- Ask about our commercial accessories as well!



McDaniel Metal Products

MCDANIEL METAL PRODUCTS	DESCRIPTION	STANDARD PACK QTY
ACE1420-6	14" x 20" AHU Filter Housing 1", 2", 4"	1
ACE1620-6	16" x 20" AHU Filter Housing 1", 2", 4"	1
ACE2025-6N	20" x 25" AHU Filter Housing 1", 2", 4"	1
ACE1420-3	14" x 20" AHU Filter Housing 1" or 2"	1
ACE1620-3	16" x 20" AHU Filter Housing 1" or 2"	1
ACE2025-3N	20" x 25" AHU Filter Housing 1" or 2"	1
ACG1425-6	14" x 25" Gas Furn Filter Housing 1", 2", 4"	1
ACG1625-6	16" x 25" Gas Furn Filter Housing 1", 2", 4"	1
ACG2025-6	20" x 25" Gas Furn Filter Housing 1", 2", 4"	1
ACG2424-6	24" x 24" Gas Furn Filter Housing 1", 2", 4"	1
ACG1425-3	14" x 25" Gas Furn Filter Housing 1" or 2"	1
ACG1625-3	16" x 25" Gas Furn Filter Housing 1" or 2"	1
ACG2025-3	20" x 25" Gas Furn Filter Housing 1" or 2"	1
ACG2424-3	24" x 24" Gas Furn Filter Housing 1" or 2"	1
LS2832	Labor Svr Filter Housing 1.5-3ton	1
LS2840	Labor Svr Filter Housing 3.5-5ton	1
DP32X36W	32" x 36" Welded Drain Pan	1
DP32X48W	32" x 48" Welded Drain Pan	1
DP32X60W	32" x 60" Welded Drain Pan	1
131/2X11X36R6	13½" x 11" x 36" Plenum R-6 Liner	1
171/2X11X36R6	17½" x 11" x 36" Plenum R-6 Liner	1
20X11X36R6	20" x 11" x 36" Plenum R-6 Liner	1

continued on next page

continued from previous page

MCDANIEL METAL PRODUCTS	DESCRIPTION	STANDARD PACK QTY
19X13X36R6	19" x 13" x 36" Plenum R-6 Liner	1
161/2X19X36R6	16½" x 19" x 36" Plenum R-6 Liner	1
19X20X36R6	19" x 20" x 36" Plenum R-6 Liner	1
23X19X36R6	23" x 19" x 36" Plenum R-6 Liner	1
16X21X36R6	16" x 21" x 36" Plenum R-6 Liner	1
24X21X36R6	24" x 21" x 36" Plenum R-6 Liner	1
30X21X36R6	30" x 21" x 36" Plenum R-6 Liner	1

EQUIPMENT PADS

We offer a complete line of concrete and plastic equipment pads for any heat pump or condensing unit installation.

PRODUCTS

- Cladlite Equipment Pads
- E-Lite Equipment Pads
- Ultralite Equipment Pads
- Black Plastic Equipment Pads



Equipment Pads

EQUIPMENT PADS	DESCRIPTION	STANDARD PACK QTY
3232-3	Cladlite Pad 32" x 32" x 3"	20
3660-3	Cladlite Pad 36" x 60" x 3"	15
EL2424-2	E-Lite Pad 24" x 24" x 2"	44
EL2424-3	E-Lite Pad 24" x 24" x 3"	16
EL2436-2	E-Lite Pad 24 x 36 x 2"	22
EL2626-2	E-Lite Pad 26" x 26" x 2"	22
EL3030-2	E-Lite Pad 30" x 30" x 2"	22
EL3030-3	E-Lite Pad 30" x 30" x 3"	16
EL3232-2	E-Lite Pad 32" x 32" x 2"	22
EL3232-3	E-Lite Pad 32" x 32" x 3"	16
EL3636-2	E-Lite Pad 32" x 32" x 2"	22
EL3636-3	E-Lite Pad 36" x 36" x 3"	16
EL3648-3	E-Lite Pad 36" x 48" x 3"	16
EL3870-3	E-Lite Pad 38" x 70" x 3"	16
EL4040-3	E-Lite Pad 40" x 40" x 3"	16
EL5252-3	E-Lite Pad 52" x 52" x 3"	16
EL5658-3	E-Lite Pad 56" x 58" x 3"	16
UC1636-2	Ultralite Pad 16" x 36" x 2"	20
UC2424-2	Ultralite Pad 24" x 24" x 2"	20
UC2660-3	Ultralite Pad 26" x 60" x 3"	15

continued on next page

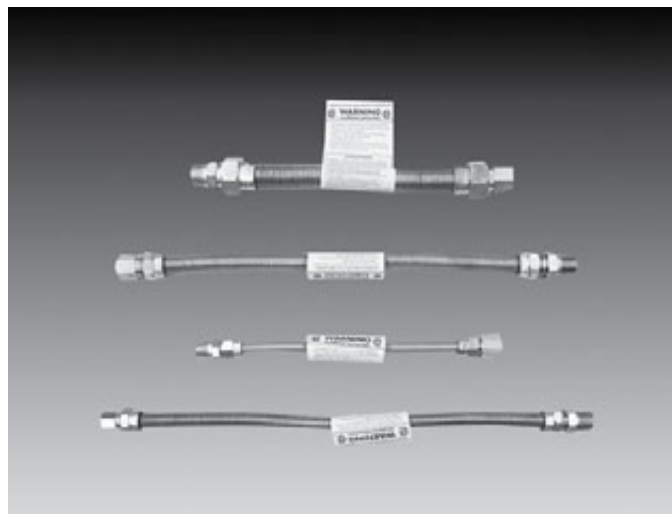
continued from previous page

EQUIPMENT PADS	DESCRIPTION	STANDARD PACK QTY
UC3030-2	Ultralite Pad 30" x 30" x 2"	20
UC3030-3	Ultralite Pad 30" x 30" x 3"	15
UC3232-2	Ultralite Pad 32" x 32" x 2"	20
UC3232-3	Ultralite Pad 32" x 32" x 3"	15
UC3445-3	Ultralite Pad 34" x 45" x 3"	15
UC3636-2	Ultralite Pad 36" x 36" x 2"	20
UC3636-3	Ultralite Pad 36" x 36" x 3"	15
UC4042-3	Ultralite Pad 40" x 42" x 3"	15
ACP24243	Black Pad 24" x 24" x 3"	16
ACP30303	Black Pad 30" x 30" x 3"	16
ACP32323	Black Pad 32" x 32" x 3"	16
ACP36363	Black Pad 36" x 36" x 3"	16
ACP36483	Black Pad 36" x 48" x 3"	16
ACP52523	Black Pad 52" x 52" x 3"	15

GAS CONNECTORS

PRODUCTS

- Constructed from high tensile strength stainless steel
- One piece construction - no solder joints
- Greater flexibility, easier installations
- Resist corrosion caused by common household chemicals
- Manufactured with smooth flared tube ends. Less torque required to connect



Gas Connection Lines

GAS CONNECTORS	DESCRIPTION	STANDARD PACK QTY
PFSAGK-2000	1/2" x 25' Gas Kit	15
HFSB-2424	1/2" FIP x 1/2" FIP Straight Ball Valve - Red Top Valve	25
	FIP BALL VALVE GAS CONNECTOR	
HFDC-5K-18	1/2" FIP x 1/2" FIP Ball Valve x 18" Gas Connector	25
HFRC-4K-18	1/2" MIP x 1/2" FIP Ball Valve x 18" Gas Connector	25
HFDC-4K-24	1/2" MIP x 1/2" FIP Ball Valve x 24" Gas Connector	25
HFDC-4K-36	1/2" MIP x 1/2" FIP Ball Valve x 36" Gas Connector	25
HFRC-45-18	1/2" MIP x 1/2" FIP x 18" Gas Connector	25
HFDC-45-24	1/2" MIP x 1/2" FIP x 24" Gas Connector	25
HFRC-45-24	1/2" MIP x 1/2" FIP x 24" Gas Connector	25
HFRC-45-36	1/2" MIP x 1/2" FIP x 36" Gas Connector	25
HFRC-44-24	1/2" MIP x 1/2" MIP x 24" Gas Connector	25
HFRC-44-36	1/2" MIP x 1/2" MIP x 36" Gas Connector	25
HFRC-44-48	1/2" MIP x 1/2" MIP x 48" Gas Connector	25
HFRC-4J-30	1/2" MIP x 3/4" FIP Ball Valve x 30" Gas Connector	25
HFRC-4J-36	1/2" MIP x 3/4" FIP Ball Valve x 36" Gas Connector	15
HFDC-4K-18	1/2" MIP x 1/2" OD x 3/8" ID x 18" w/ FIP Vlv < 93k btu	15
HFRC-4K-24	1/2" MIP x 5/8" OD x 1/2" ID x 24" w/ FIP Vlv < 150k btu	15
HFRC-4K-36	1/2" MIP x 5/8" OD x 1/2" ID x 36" w/ FIP Vlv < 125k btu	15
HFSA-12-12	1/2" MIP x 3/4" FIP x 12" Special App Gas Connector	6

continued on next page

continued from previous page

GAS CONNECTORS	DESCRIPTION	STANDARD PACK QTY
	FIP SPECIAL APP GAS CONNECTOR	
HFSA-12-18	$\frac{3}{4}$ " MIP x $\frac{3}{4}$ " FIP x 18" Special App Gas Connector	6
HFSA-12-24	$\frac{3}{4}$ " MIP x $\frac{3}{4}$ " FIP x 24" Special App Gas Connector	10
HFSA-12-36	$\frac{3}{4}$ " MIP x $\frac{3}{4}$ " FIP x 36" Special App Gas Connector	3
HFSA-12-48	$\frac{3}{4}$ " MIP x $\frac{3}{4}$ " FIP x 48" Special App Gas Connector	25
HFSA-12-60	$\frac{3}{4}$ " MIP x $\frac{3}{4}$ " FIP x 60" Special App Gas Connector	25
HFSA-12-72	$\frac{3}{4}$ " MIP x $\frac{3}{4}$ " FIP x 72" Special App Gas Connector	25

CONDENSATE PUMPS

Beckett offers a complete line of condensate removal pumps for the heating and air conditioning industry; applications include air conditioners, high efficiency gas furnaces, refrigeration units, beverage machines and dehumidifiers.

FEATURES

- All black flame retardant plastic
- Larger high impact abs tank
- Mounting available for either side
- New improved duck-bill check valve design
- Three intake holes
- Reliable micro switch float mechanism
- Heavy gauge steel motor mount
- Convenient discharge with barb and threads
- Capable of handling mild acid
- Stainless steel shaft



Condensate Pumps

- Thermal overload protection
- 1-Year limited warranty

CONDENSATE PUMPS	DESCRIPTION	STANDARD PACK QTY
MEDIUM CAPACITY		
CB151UL	Condensate Pump - 115v 15' Lift	6
CB151LSUL	Condensate Pump - 115v 15' Lift No Safety	6
CB151TUL	Condensate Pump - 115v 15' Lift W/Tubing	4
CB201UL	Condensate Pump - 115v 20' Lift	6
CB201LSUL	Condensate Pump - 115v 20' Lift No Safety	6
CB201TUL	Condensate Pump - 115v 20' Lift W/Tubing	4
CB202UL	Condensate Pump - 230v 20' Lift	6
CB202TUL	Condensate Pump - 230v 20' Lift W/Tubing	6
LARGE CAPACITY		
CB221UL	Condensate Pump - 115v 22' Lift	4
CB221TUL	Condensate Pump - 115v 20' Lift W/Tubing	4
CB222UL	Condensate Pump - 230v 22' Lift	4
COMPACT LOW PROFILE		
CL201UL	Condensate Pump - 115v 20' Lift Low Pro	6
CL202UL	Condensate Pump - 230v 20' Lift Low Pro	6

continued on next page

continued from previous page

CONDENSATE PUMPS	DESCRIPTION	STANDARD PACK QTY
INDUSTRIAL MODELS		
CB251UL	Condensate Pump - 115v 25' Lift	1
CB251ULHT	Condensate Pump - 115v 25' Lift High Temp	1
CB252UL	Condensate Pump - 230v 25' Lift	1
CB252ULHT	Condensate Pump - 230v 25' Lift High Temp	1
CB501UL	Condensate Pump - 115v 50' Lift	1
CB501ULHT	Condensate Pump - 115v 50' Lift High Temp	1
CB502UL	Condensate Pump - 230v 50' Lift	1
CB502ULHT	Condensate Pump - 230v 50' Lift High Temp	1
CB504UL	Condensate Pump - 460v 50' Lift	1
CB504ULHT	Condensate Pump - 460v 50' Lift High Temp	1
IN-PAN MODEL		
IPC13A	Condensate Pump - 115v 12' Lift	4
SAFETY CONTROL SWITCHES		
SS-1502	Condensate Pump - Safety Switch	12
SS-1502R8	Condensate Pump - Safety Switch 8' Leads	12
SS-1506	Condensate Pump - Safety Switch 9' Leads	12

PARKER - DRYERS, TXV & SIGHTGLASSES

Parker Hannifin offers a complete line of liquid and suction line filter dryers, thermal expansion valves, sight glass/moisture indicators, shells and dryer cores.

PRODUCTS

- Liquid line filter dryers
- Bi-flow filter dryer
- Suction line filter dryers
- Sight glass/moisture indicators
- Thermal expansion valves
- Shells and dryer cores



Parker Hannifin - System Protectors

PARKER - DRYERS, TXV & SIGHTGLASSES	DESCRIPTION	STANDARD PACK QTY
032	1/4" SAE Male Filter Dryer	25
032S	1/4" ODF Filter Dryer	25
032FM	1/4" SAE Fem x Male Filt Dryer	25
052	1/4" SAE Male Filter Dryer	25
052S	1/4" ODF Filter Dryer	25
0525S	5/16" ODF Filter Dryer	25
053	3/8" SAE Male Filter Dryer	25
053S	3/8" ODF Filter Dryer	25
082	1/4" SAE Male Filter Dryer	25
082S	1/4" ODF Filter Dryer	25
0825S	5/16" ODF Filter Dryer	25
083	3/8" SAE Male Filter Dryer	25
083S	3/8" ODF Filter Dryer	25
084	1/2" SAE Male Filter Dryer	25
084S	1/2" ODF Filter Dryer	25
162	1/4" SAE Male Filter Dryer	25
162S	1/4" ODF Filter Dryer	25
1625S	5/16" ODF Filter Dryer	25
163	3/8" SAE Male Filter Dryer	25
163S	3/8" ODF Filter Dryer	25
164	1/2" SAE Male Filter Dryer	25

continued on next page

continued from previous page

PARKER - DRYERS, TXV & SIGHTGLASSES	DESCRIPTION	STANDARD PACK QTY
164S	1/2" ODF Filter Dryer	25
165	5/8" SAE Male Filter Dryer	25
165S	5/8" ODF Filter Dryer	25
303ODF	3/8" SAE Male Filter Dryer	10
303S	3/8" ODF Filter Dryer	10
304	1/2" SAE Male Filter Dryer	10
304S	1/2" ODF Filter Dryer	10
305	5/8" SAE Male Filter Dryer	10
305S	5/8" ODF Filter Dryer	10
307S	7/8" ODF Filter Dryer	10
413	3/8" SAE Male Filter Dryer	10
414ODF	1/2" SAE Male Filter Dryer	10
414S	1/2" ODF Filter Dryer	10
415ODF	5/8" SAE Male Filter Dryer	10
415S	5/8" ODF Filter Dryer	10
417S	7/8" ODF Filter Dryer	10
756S	3/4" ODF Filter Dryer	10
757S	7/8" ODF Filter Dryer	4
759S	1 1/8" ODF Filter Dryer	4
SS-053S	3/8" ODF Filter Dryer	4
SS-083S	3/8" ODF Filter Dryer	25
SS-163S	3/8" ODF Filter Dryer	25
083S-XF	3/8" ODF Filter Dryer R410a	25
163S-XF	3/8" ODF Filter Dryer R410a	25
303S-XF	3/8" ODF Filter Dryer R410a	25
SLD8-5SVHH	5/8" ODF Suct Line Filt Dryer	15
SLD8-6SVHH	3/4" ODF Suct Line Filt Dryer	15
SLD8-7SVHH	7/8" ODF Suct Line Filt Dryer	15
SLD13-5VHH	5/8" ODF Suct Line Filt Dryer	12
SLD13-5SVHH	5/8" ODF Suct Line Filt Dryer	12
SLD13-6SVHH	3/4" ODF Suct Line Filt Dryer	12
SLD13-7SVHH	7/8" ODF Suct Line Filt Dryer	12
SLD13-9SVHH	1 1/8" ODF Suct Line Filt Dryer	12
SLD27-7SVHH	7/8" ODF Suct Line Filt Dryer	12
SLD27-9SVHH	1 1/8" ODF Suct Line Filt Dryer	12
SLD54-11SVHH	1 3/8" ODF Suct Line Filt Dryer	12
SLD54-13SVHH	1 5/8" ODF Suct Line Filt Dryer	12

continued on next page

continued from previous page

PARKER - DRYERS, TXV' & SIGHTGLASSES	DESCRIPTION	STANDARD PACK QTY
SLD165-V	5/8" ODF Suct Line Dryer Sahara	25
SLD166-V	3/4" ODF Suct Line Dryer Sahara	25
SLD167-V	7/8" ODF Suct Line Dryer Sahara	25
SLD305-V	5/8" ODF Suct Line Dryer Sahara	10
SLD306-V	3/4" ODF Suct Line Dryer Sahara	10
SLD307-V	7/8" ODF Suct Line Dryer Sahara	10
BF082S	1/4" ODF Suct Line Filter Dryer	25
BF083	3/8" SAE Suct Line Filter Dryer	25
BF083S	3/8" ODF Suct Line Filter Dryer	25
BF084	1/2" SAE Suct Line Filter Dryer	25
BF084S	1/2" ODF Suct Line Filter Dryer	25
BF162S	1/4" ODF Suct Line Filter Dryer	25
BF163	3/8" SAE Suct Line Filter Dryer	25
BF163S	3/8" ODF Suct Line Filter Dryer	25
BF163-XF	3/8" SAE Suct Line Dryer R410a	25
BF163S-XF	3/8" ODF Suct Line Dryer R410a	25
BF083S (COP)	3/8" ODF Suct Line Filter Dryer	25
BF164	1/2" SAE Suct Line Filter Dryer	25
BF164S	1/2" ODF Suct Line Filter Dryer	25
BF165S	5/8" ODF Suct Line Filter Dryer	25
PSG-2	1/4" MXF SAE Sight Glass	25
PSG-3	3/8" MXF SAE Sight Glass	25
PSG-4	1/2" MXF SAE Sight Glass	25
PSG-5	5/8" MXF SAE Sight Glass	25
PSG-2MF	1/4" Flx Fem SAE FI Sight Glass	25
PSG-3MF	3/8" Flx Fem SAE FI Sight Glass	25
PSG-4MF	1/2" Flx Fem SAE FI Sight Glass	25
PSG-5MF	5/8" Flx Fem SAE FI Sight Glass	25
PSG-2S	1/4" ODF Sight Glass	25
PSG-3S	3/8" ODF Sight Glass	25
PSG-4S	1/2" ODF Sight Glass	25
PSG-5S	5/8" ODF Sight Glass	25
PSG-7S	7/8" ODF Sight Glass	25
PSG-9S	1 1/8" ODF Sight Glass	25
PSG-11S	1 3/8" ODF Sight Glass	1
PSG-13S	1 5/8" ODF Sight Glass	1
PSG-17S	2 1/8" ODF Sight Glass	1

continued on next page

continued from previous page

PARKER - DRYERS, TXV & SIGHTGLASSES	DESCRIPTION	STANDARD PACK QTY
P-487	7/8" ODF Core Filt Dry Shell	1
P-489	1 1/8" ODF Core Filt Dry Shell	1
P-967	7/8" ODF 2 Core Filt Dry Shell	1
FILTER DRIERS & TXV VALVES		
PM3083-5-4C	1/8" ODF Muffler Bi-Direct Conn	ea
PCK-100	100 Cu. In. Filter Dryer Core	ea
P-969	1 1/8 ODF 2 Core Filt Dry Shell	ea
P-9611	1 3/8 ODF 2 Core Filt Dry Shell	12
P-9613	1 5/8 ODF 2 Core Filt Dry Shell	12
PCX-48	48 Cu. In. Filter Dryer Core	12
PCK-48HH	48 Cu. In. Filter Dryer Core	4
PCK-48	48 Cu. In. Filter Dryer Core	12
PFE48-BF	48 Cu. In. Filter Dryer Core	ea
HCAE-3-VX100A	TXV 1-1/2" to 3 Tons Florater	ea
HCAE-5-VX100A	TXV 3-1/2" to 5 Tons Florater	ea
HCAE-3-ZX200A	TXV 1-1/2" to 3 Tons Florater R410A	ea
HCAE-5-ZX200A	TXV 3-1/2" to 5 Tons Florater R410A	ea

RITCHIE HVAC PRODUCTS

PRODUCTS

- Recovery machines
- Vacuum pumps
- Wide variety of manifolds, hoses and gauges
- Many accessories and tools
- Well engineered to exact standards
- Worldwide recognition for performance and quality
- HVAC and refrigeration



Ritchie HVAC Products

REFRIGERANT TOOLS & ACCESSORIES	DESCRIPTION	STANDARD PACK QTY
	CHARGING HOSES	
21260	1/4" Plus II 60" Blue Hose	ea
21660	1/4" Plus II 60" Red Hose	ea
21060	1/4" Plus II 60" Yellow Hose	ea
14560	3/8" Plus II 60" Yellow Hose	ea
11985	1/4" Std. 60" Charging Hose Set	ea
21985	1/4" Plus II 60" Charging Hose Set	ea
29985	1/4" Plus II 60" W/Compact BV Charging Hose Set	ea
25985	1/4" Plus II 60" W/Flexflow Charging Hose Set	ea
22985	1/4" Plus II 60" W/Sealright Charging Hose Set	ea
29980	1/4" Plus II 9" W/Compact BV Charging Hose Set	ea
	MANIFOLDS & GUAGES	
42000	Std Brass R12/R22/R502 Manifold W/O Hoses	ea
41213	Std Brass R12/R22/R502 Manifold W/Std. 36" Hoses	ea
41215	Std Brass R12/R22/R502 Manifolds W/Std. 60" Hoses	ea
42004	Std Brass R22/R404A/R410A Manifold W/Plus II 60" Hoses	ea
41709	Std Brass 410A Manifold W/Plus II 60" Hose Set	ea
49863	2V Alum. R22/R404A/R410A Manifold W/O Hoses	ea
49867	2V Alum. R22/R404a/R410a Manifold W/Plus II 60" Hoses	ea
49892	4v Alum. Solar Manifold W/O Hoses	ea
19020	Pkg.10 Ch-20 Bulk Gaskets	ea
49138	80mm Blue Compound R22/R404A/R410A °F Gauge	ea

continued on next page

continued from previous page

REFRIGERANT TOOLS & ACCESSORIES	DESCRIPTION	STANDARD PACK QTY
	ACCUPROBE LEAK DETECTOR	
69354	Accuprobe II Leak Detector	ea
69365	Accuprobe Leak Detector	ea
78055	Gas Test Kit 0-10 In.	ea
78060	Gas Test Kit 0-35 In.	ea
	SPECIALTY TOOLS	
60351	6 Pc. Bending Spring Set	ea
60100	Blades For 60101 & 60102	ea
60278	Deluxe Flare Tool $\frac{1}{8}$ - $\frac{3}{4}$	ea
60609	Hex Key Adapter	ea
60079	Indiv. Pin & Clip - 60101	ea
60616	Knuckle Saver Ratchet Wrench	ea
60331	Ratchet Hand Bender	ea
60121	Mini Cutter $\frac{1}{8}$ " to $\frac{7}{8}$ "	ea
60072	New Cutter Wheel - 60121	ea
60101	Prem. Tube Cutter $\frac{1}{8}$ " to $1\frac{1}{8}$ "	ea
60102	Prem. Tubecutter $\frac{1}{4}$ " to $1\frac{5}{8}$ "	ea
60613	Reversible Ratchet Wrench	ea
60610	Reversible Ratchet Wrench W/Hex Key	ea
60638	Shorter $\frac{3}{16}$ " & $\frac{5}{16}$ " Hex Key Adapter	ea
68848	Wrap-Around Heater 115V	ea
	VACUUM PUMPS & ACCESSORIES	
93560	6CFM - Vacuum Pump	ea
69086	Handheld Vacuum Gauge Kit	ea
93094	Vacuum Oil - Gallons 4/Case	ea
93092	Vacuum Oil - Quarts 12/Case	ea
18971	$\frac{1}{4}$ " Vacuum/Charging Valve W/O Port	ea
18975	$\frac{1}{4}$ " Vacuum/Charging Valve W/Port	ea
19109	Seal Right Coupling - Straight	ea
19209	90 Degree Seal Right Coupler	ea
	REFRIGERANT RECOVERY & ACCESSORIES	
95760	XLT REFRIGERANT RECOVERY UNIT	ea
68802	110# Refrigerant Platform Scale	ea
19173	$\frac{5}{16}$ " QC X $\frac{1}{4}$ " MFL 410A Coupler	ea

**ELECTRICAL COMPONENTS
PRODUCTS**

- Capacitors
 - 370V & 440V
 - Oval & Round
 - Dual Oval & Round
- Contactors
 - 1, 2 & 3 Pole
 - 24V, 120V & 208/240V
 - 30 to 90 AMPS
- Relays
 - NO/NC - 24V, 120V, 208/240V
 - SPDT - 24V, 120V, 208/240V
 - DPDT - 24V, 120V, 208/240V
- Transformers
 - 20VA - 100VA
 - 120/208/240/480V - 24V


Oval Motor Run Capacitors

CAPACITORS	DESCRIPTION	STANDARD PACK QTY
370 V OVAL CAPACITORS		
ELE-33700V	3 MFD/370V Oval Capacitor	10
ELE-43700V	4 MFD/370V Oval Capacitor	10
ELE-53700V	5 MFD/370V Oval Capacitor	10
ELE-753700V	7.5 MFD/370V Oval Capacitor	10
ELE-103700V	10 MFD/370V Oval Capacitor	10
ELE-1253700V	12.5 MFD/370V Oval Capacitor	10
ELE-153700V	15 MFD/370V Oval Capacitor	10
ELE-203700V	20 MFD/370V Oval Capacitor	10
ELE-253700V	25 MFD/370V Oval Capacitor	10
ELE-303700V	30 MFD/370V Oval Capacitor	10
ELE-353700V	35 MFD/370V Oval Capacitor	10
ELE-403700V	40 MFD/370V Oval Capacitor	10
ELE-453700V	45 MFD/370V Oval Capacitor	10
ELE-503700V	50 MFD/370V Oval Capacitor	5
370V ROUND CAPACITORS		
ELE-5370RD	5 MFD/370V Round Capacitor	10
ELE-75370RD	7.5 MFD/370V Round Capacitor	10
ELE-10370RD	10 MFD/370V Round Capacitor	10
ELE-125370RD	12.5 MFD/370V Round Capacitor	10

continued on next page

continued from previous page

CAPACITORS	DESCRIPTION	STANDARD PACK QTY
ELE-15370RD	15 MFD/370V Round Capacitor	10
ELE-20370RD	20 MFD/370V Round Capacitor	10
ELE-25370RD	25 MFD/370V Round Capacitor	10
ELE-30370RD	30 MFD/370V Round Capacitor	10
ELE-35370RD	35 MFD/370V Round Capacitor	10
ELE-40370RD	40 MFD/370V Round Capacitor	10
ELE-45370RD	45 MFD/370V Round Capacitor	10
ELE-50370RD	50 MFD/370V Round Capacitor	5
ELE-60370RD	60 MFD/370V Round Capacitor	5
	440V OVAL CAPACITORS	
ELE-34400V	3 MFD/440V Oval Capacitor	10
ELE-44400V	4 MFD/440V Oval Capacitor	10
ELE-54400V	5 MFD/440V Oval Capacitor	10
ELE-754400V	7.5 MFD/440V Oval Capacitor	10
ELE-104400V	10 MFD/440V Oval Capacitor	10
ELE-1254400V	12.5 MFD/440V Oval Capacitor	10
ELE-154400V	15 MFD/440V Oval Capacitor	10
ELE-204400V	20 MFD/440V Oval Capacitor	10
ELE-254400V	25 MFD/440V Oval Capacitor	10
ELE-304400V	30 MFD/440V Oval Capacitor	10
ELE-354400V	35 MFD/440V Oval Capacitor	10
ELE-404400V	40 MFD/440V Oval Capacitor	10
ELE-454400V	45 MFD/440V Oval Capacitor	10
ELE-504400V	50 MFD/440V Oval Capacitor	5
	440V ROUND CAPACITORS	
ELE-3440RD	3 MFD/440V Round Capacitor	10
ELE-4440RD	4 MFD/440V Round Capacitor	10
ELE-5440RD	5 MFD/440V Round Capacitor	10
ELE-75440RD	7.5 MFD/440V Round Capacitor	10
ELE-10440RD	10 MFD/440V Round Capacitor	10
ELE-125440RD	12.5 MFD/440V Round Capacitor	10
ELE-15440RD	15 MFD/440V Round Capacitor	10
ELE-20440RD	20 MFD/440V Round Capacitor	10
ELE-25440RD	25 MFD/440V Round Capacitor	10
ELE-30440RD	30 MFD/440V Round Capacitor	10
ELE-35440RD	35 MFD/440V Round Capacitor	10
ELE-40440RD	40 MFD/440V Round Capacitor	10
ELE-45440RD	45 MFD/440V Round Capacitor	10

continued on next page

continued from previous page

CAPACITORS	DESCRIPTION	STANDARD PACK QTY
ELE-50440RD	50 MFD/440V Round Capacitor	5
ELE-55440RD	55 MFD/440V Round Capacitor	5
ELE-60440RD	60 MFD/440V Round Capacitor	5
	370V DUAL OVAL CAPACITORS	
ELE-15/53700V	15/5 370V Dual Oval Capacitor	10
ELE-20/53700V	20/5 370V Dual Oval Capacitor	10
ELE-25/53700V	25/5 370V Dual Oval Capacitor	10
ELE-30/53700V	30/5 370V Dual Oval Capacitor	10
ELE-35/53700V	35/5 370V Dual Oval Capacitor	10
ELE-40/53700V	40/5 370V Dual Oval Capacitor	10
ELE-45/53700V	45/5 370V Dual Oval Capacitor	10
ELE-50/53700V	50/5 370V Dual Oval Capacitor	5
	370V DUAL ROUND CAPACITORS	
ELE-25/5370RD	25/5 370V Dual Round Capacitor	10
ELE-30/5370RD	30/5 370V Dual Round Capacitor	10
ELE-35/5370RD	35/5 370V Dual Round Capacitor	10
ELE-40/5370RD	40/5 370V Dual Round Capacitor	10
ELE-45/5370RD	45/5 370V Dual Round Capacitor	10
ELE-50/5370RD	50/5 370V Dual Round Capacitor	5
ELE-60/5370RD	60/5 370V Dual Round Capacitor	5
ELE-80/5370RD	80/5 370V Dual Round Capacitor	5
	440V DUAL OVAL CAPACITORS	
ELE-15/54400V	15/5 440V Dual Oval Capacitor	10
ELE-20/54400V	20/5 440V Dual Oval Capacitor	10
ELE-25/54400V	25/5 440V Dual Oval Capacitor	10
ELE-30/54400V	30/5 440V Dual Oval Capacitor	10
ELE-35/54400V	35/5 440V Dual Oval Capacitor	10
ELE-40/54400V	40/5 440V Dual Oval Capacitor	10
ELE-45/54400V	45/5 440V Dual Oval Capacitor	10
ELE-50/54400V	50/5 440V Dual Oval Capacitor	5
	440V DUAL ROUND CAPACITORS	
ELE-15/5440RD	15/5 440V Dual Round Capacitor	10
ELE-25/5440RD	25/5 440V Dual Round Capacitor	10
ELE-30/5440RD	30/5 440V Dual Round Capacitor	10
ELE-35/5440RD	35/5 440V Dual Round Capacitor	10
ELE-SPDT120V	SPDT - 120VAC Relay	10
ELE-SPDT240V	SPDT - 208/240VAC Relay	10
ELE-DPDT24V	DPDT - 24VAC Relay	10

continued on next page

continued from previous page

CAPACITORS, CONTRACTORS, RELAYS	DESCRIPTION	STANDARD PACK QTY
ELE-40/5440RD	40/5 440V Dual Round Capacitor	10
ELE-45/5440RD	45/5 440V Dual Round Capacitor	10
ELE-50/5440RD	50/5 440V Dual Round Capacitor	5
ELE-55/5440RD	55/5 440V Dual Round Capacitor	5
ELE-60/5440RD	60/5 440V Dual Round Capacitor	5
CONTACTORS		
ELE-1P30A24V	1P - 30A - 24VAC Contactor	10
ELE-1P30A120V	1P - 30A - 120VAC Contactor	10
ELE-1P30A240V	1P - 30A - 208/240VAC Contactor	10
ELE-2P30A24V	2P - 30A - 24VAC Contactor	10
ELE-2P30A120V	2P - 30A - 120VAC Contactor	10
ELE-2P30A240V	2P - 30A - 208/240VAC Contactor	10
ELE-2P40A24V	2P - 40A - 24VAC Contactor	10
ELE-2P40A120V	2P - 40A - 120VAC Contactor	10
ELE-2P40A240V	2P - 40A - 208/240VAC Contactor	10
ELE-3P30A24V	3P - 30A - 24VAC Contactor	5
ELE-3P30A120V	3P - 30A - 120VAC Contactor	5
ELE-3P30A240V	3P - 30A - 208/240VAC Contactor	5
ELE-3P40A24V	3P - 40A - 24VAC Contactor	5
ELE-3P40A120V	3P - 40A - 120VAC Contactor	5
ELE-3P40A240V	3P - 40A - 208/240VAC Contactor	5
ELE-3P50A24V	3P - 50A - 24VAC Contactor	5
ELE-3P50A120V	3P - 50A - 120VAC Contactor	5
ELE-3P50A240V	3P - 50A - 208/240VAC Contactor	5
ELE-3P60A24V	3P - 60A - 24VAC Contactor	5
ELE-3P60A120V	3P - 60A - 120VAC Contactor	5
ELE-3P60A240V	3P - 60A - 208/240VAC Contactor	5
ELE-3P75A24V	3P - 75A - 24VAC Contactor	6
ELE-3P75A120V	3P - 75A - 120VAC Contactor	6
ELE-3P75A240V	3P - 75A - 208/240VAC Contactor	6
ELE-3P90A24V	3P - 90A - 24VAC Contactor	6
ELE-3P90A120V	3P - 90A - 120VAC Contactor	6
ELE-3P90A240V	3P - 90A - 208/240VAC Contactor	6
RELAYS		
ELE-NO/NC24V	1NO/1NC - 24VAC Relay	10
ELE-NO/NC120V	1NO/1NC - 120VAC Relay	10
ELE-NO/NC240V	1NO/1NC - 208/240VAC Relay	10
ELE-SPDT24V	SPDT - 24VAC Relay	10

continued on next page

continued from previous page

ELE-DPDT120V	DPDT - 120VAC Relay	10
ELE-DPDT1240V	DPDT - 208/240VAC Relay	10
TRANSFORMERS		
ELE-24V20A	120- 24V 20VA Transformer	10
ELE-24V40A	120/208/240-24V 40VA Transformer	10
ELE-24V75A	120/208/240/480V- 24V 75VA Transformer	12
ELE-24V100A	120/208/240/480V- 24V 100VA Transformer	5
COMPRESSOR SAVERS		
CSR-U-1	1-3 Ton Compressor Saver - Start Kit	25
CSR-U-2	3-5 Ton Compressor Saver - Start Kit	25
CSR-U-3	4-5 Ton Scroll Comp Saver - Start Kit	25

continued on next page

GOODPARTS® MOTORS

- One year warranty over the counter
- Handle grip box
- All the information you need to make right choice available on the label
- Color coded easy to identify labels
- Competitive cross-reference on each label
- Universal condenser, blower and multi-horse SOS/rescue motor models


Goodparts® Motors

GOODPARTS® MOTORS	DESCRIPTION	STANDARD PACK QTY
UNIVERSAL COND MOTOR 825 RMP		
GP3403	Univ Cond Motor - 1/6HP 208-230V 825 RMP	ea
GP3404	Univ Cond Motor - 1/4HP 208-230V 825 RPM	ea
GP3405	Univ Cond Motor - 1/4HP 208/230V 825 RPM	ea
GP3746	Univ Cond Motor - 1/2HP 208/230V 825 RPM	ea
UNIVERSAL COND MOTOR 1075 RMP		
GP3727	Univ Cond Motor - 1/6HP 208-230V 1075 RPM	ea
GP3728	Univ Cond Motor - 1/4HP 208-230V 1075 RPM	ea
GP3729	Univ Cond Motor - 1/2HP 208/230V 1075 RPM	ea
GP3730	Univ Cond Motor - 1/2HP 208/230V 1075 RPM	ea
GP3731	Univ Cond Motor - 3/4HP 208/230V 1075 RPM	ea
UNIVERSAL COND MOTOR MULTI HORSE POWER		
GP3465	Univ Cond 1/6-1/3HP 230V 1075 RPM	ea
GP3468	Univ Cond 1/5-1/2HP 230V 1075 RPM	ea
GP3469	Univ Cond 1/6-1/3HP 230V 825 RPM	ea
UNIVERSAL BLWR MOTOR 1075 RMP		
GP3583	Univ Blwr Motor 1/4HP - 115V 1075 RPM	ea
GP3585	Univ Blwr Motor 1/3HP - 115V 1075 RPM	ea
GP3587	Univ Blwr Motor 1/2HP - 115V 1075 RPM	ea
GP3589	Univ Blwr Motor 3/4HP - 115V 1075 RPM	ea

continued on next page

continued from previous page

GOODPARTS® MOTORS	DESCRIPTION	STANDARD PACK QTY
	UNIVERSAL BLWR MOTOR 1075 RMP	
GP3584	Univ Blwr Motor 1/4HP - 230V 1075 RPM	ea
GP3586	Univ Blwr Motor 1/3HP - 230V 1075 RPM	ea
GP3588	Univ Blwr Motor 1/2HP - 230V 1075 RPM	ea
GP3590	Univ Blwr Motor 3/4HP - 230V 1075 RPM	ea
	UNIVERSAL BLWR MOTOR MULTI HORSE POWER	
GP3463	Univ Cond 1/6-1/2HP 115V 1075 RPM	ea
GP3466	Univ Cond 1/5-3/4HP 115V 1075 RPM	ea
GP3464	Univ Cond 1/6-1/2HP 230V 1075 RPM	ea
GP3467	Univ Cond 1/5-3/4HP 230V 1075 RPM	ea

GE MOTORS

- By Regal Beloit
- Replacement condenser fan motors
- Replacement furnace and AHU blower motors
- Multi horse power replacement motors
- 1 year warranty
- Sleeve and ball bearing motors



GE Motors

GE MOTORS	DESCRIPTION	STANDARD PACK QTY
UNIVERSAL HIGH EFFICIENCY MOTORS		
3202	1/8HP 825RPM 1SPD 208-230V Up/Dwn Ball	ea
3203	1/8HP 825RPM 1SPD 208-230V Up/Dwn Ball	ea
3204	1/4HP 825RPM 1SPD 208-230V Up/Dwn Ball	ea
3205	1/3HP 825RPM 1SPD 208-230V Up/Dwn Ball	ea
3403	1/8HP 825RPM 1SPD 208-230V Up/Dwn Sleeve	ea
3404	1/4HP 825RPM 1SPD 208-230V Up/Dwn Sleeve	ea
3405	1/3HP 825RPM 1SPD 208-230V Up/Dwn Sleeve	ea
MULTI-TAP REPLACEMENT MOTORS		
3458	1/3-1/6HP 208-230V 1075RPM 1SPD Ball 1SPD	ea
3459	1/3-1/6HP 208-230V 825RPM 1SPD Ball 1SPD	ea
3463	1/2-1/6HP 115V 1075RPM 4SPD Sleeve	ea
3464	1/2-1/6HP 208-230V 1075RPM 4SPD Sleeve	ea
3465	1/3-1/6HP 208-230V 1075RPM 2SPD Ball	ea
3466	3/4-1/5HP 115V 1075RPM 4SPD Ball	ea
3467	3/4-1/6HP 208-230V 1075RPM 4SPD Ball	ea
3468	1/2-1/5HP 208-230V 1075RPM 2SPD Ball	ea
3469	1/3-1/6HP 208-230V 825RPM 2SPD Ball	ea
3746	1/2HP 825RPM 1SPD 208-230V Up/Dwn Ball	ea
3456HS	1/3-1/6HP, 1PH, 208-230V, 1075RPM-Sleeve	ea
3457HS	1/3-1/6HP, 1PH, 208-230V, 825RPM-Sleeve	ea

continued on next page

continued from previous page

GE MOTORS	DESCRIPTION	STANDARD PACK QTY
UNIVERSAL CONDENSER AND BLOWER MOTORS		
3583	1/4HP 1075RPM 3SPD 115V Sleeve	ea
3584	1/4HP 1075RPM 3SPD 208-230V Sleeve	ea
3585	1/3HP 1075RPM 3SPD 115V Sleeve	ea
3586	1/3HP 1075RPM 3SPD 208-230V Sleeve	ea
3587	1/2HP 1075RPM 3SPD 115V Sleeve	ea
3588	1/2HP 1075RPM 3SPD 208-230V Sleeve	ea
3589	3/4HP 1075RPM 3SPD 115V Sleeve	ea
3590	3/4HP 1075RPM 3SPD 208-230V Sleeve	ea
3727	1/6HP 1075RPM 1SPD 208-230V Up/Dwn Sleeve	ea
3728	1/4HP 1075RPM 1SPD 208-230V Up/Dwn Sleeve	ea
3729	1/3HP 1075RPM 1SPD 208-230V Up/Dwn Sleeve	ea
3730	1/2HP 1075RPM 1SPD 208-230V Up/Dwn Sleeve	ea
3731	3/4HP 1075RPM 1SPD 208-230V Up/Dwn Sleeve	ea
3732	1/4HP 1075RPM 1SPD 208-230V Up/Dwn Sleeve	ea
3733	1/3HP 1075RPM 1SPD 208-230V Up/Dwn Sleeve	ea
3734	1/2HP 1075RPM 1SPD 208-230V Up/Dwn Sleeve	ea
3735	3/4HP 1075RPM 1SPD 208-230V Up/Dwn Sleeve	ea
460V REPLACEMENT MOTORS		
3736	1/4HP 1075RPM 1SPD 460V Up/Dwn Sleeve	ea
3737	1/3HP 1075RPM 1SPD 460V Up/Dwn Sleeve	ea
3738	1/2HP 1075RPM 1SPD 460V Up/Dwn Sleeve	ea
3739	3/4HP 1075RPM 1SPD 460V Up/Dwn Sleeve	ea
TESTING & INSTALL ACCESSORIES		
A556	Torsion Flex Mounting Adapter Kit - 3 LUG	5
GETECMATEPRO	GE Motor Testing - ECM Trblshoot	ea

COMMERCIAL SMOKE DETECTORS

- System sensor
- Photoelectric
- Versatile mounting options
- Watertight available
- Variety of sample tubes
- Variety of accessories


Commercial Smoke Detectors

COMMERCIAL SMOKE DETECTORS	DESCRIPTION	STANDARD PACK QTY
D4120	Smoke Detector, Photo 4Wire	ea
D4S	Smoke Detector, Sensor Only	ea
D4P120	Smoke Detector Powerboard Only	ea
D4120W	Smoke Detector, Watertight	ea
METAL SAMPLING TUBE		
DST1.5	Metal Sampling Tube, 1- 2' Duct	10
DST3	Metal Sampling Tube, 2- 4' Duct	10
DST5	Metal Sampling Tube, 4- 8' Duct	10
ACCESSORIES		
APA151	Remote Annunciator-Piezo Alarm	ea
RA400Z	Remote Annunciator	ea
RTS451	Mag- Remote Test/ Reset Station	ea
RTS451KEY	Key- Remote Test/ Reset Station	ea
SSK451	Multi Signaling Accessory	ea
MHW	Pulsed Sounder 12/24V (White)	ea
MHR	Pulsed Sounder 12/24V (Red)	ea
PS24LOW	PA400 Add-on Strobe (White)	ea
PS12/24SLENSC	Smoke Lens Blue Lettering Ceil	ea
PS12/24SLENSW	Smoke Lens Blue Lettering Wall	ea

AQUAGUARD FLOAT SWITCHES

- Drain pan overflow protection
- Detect clogged drains
- 4 ft Leads - 18 AWG wire
- Tested to UL508
- Multiple types for multitude of installations



Aquaguard Float Switches

FLOAT SWITCHES	DESCRIPTION	STANDARD PACK QTY
AG1100+	Water Sensor for Metal Sec. Drain Pans - Magnetic	30
AG1175E	Water Sensor for Metal Sec. Drain Pans - Electronic	10
AG1200+	Water sensor for Metal Sec. Plastic Pans	30
AG2550	In-Line Water sensor	10
AG3150E	Electronic Water Sensor for Sec. Drain Lines	10
AG3175E	Electronic Water Sensor for Sec. Drain Lines - Plenum Rated	10
AG3176	Clip-on Attachment	50
AG3177	3150/3175 Extension Wire	50
AG3180E	Electronic Water Sensor with clip for commercial/package unit application	10
AG3575E	Complete kit = AG3150E, AG3176, AG2550E, 6" Plenum rated	10
Aquamate	Aquamate - Line Access Valve Ports - 10pk Ctr	10

FLOAT SWITCHES

- Drain pan overflow protection
- Detect clogged drains
- 4 ft Leads - 18 AWG wire
- Tested to UL508
- Multiple types for multitude of installations



Float Switches

FLOAT SWITCHES	DESCRIPTION	STANDARD PACK QTY
SS1	Safe-T-Switch SS1	50
SS2	Safe-T-Switch SS2	50
SS3	Safe-T-Switch SS3	50

WHIPS & DISCONNECT SWITCHES

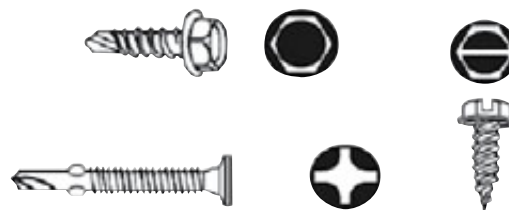
- Fused and non-fused disconnects
- Multiple amperage disconnects
- Metallic and non-metallic whips
- 8 & 10 guage
- 1/2" & 3/4" in sizes


Whips & Disconnect Switches

WHIPS & DISCONNECT SWITCHES	DESCRIPTION	STANDARD PACK QTY
	DISCONNECT SWITCHES	
83396	Disconnect Switch 30A Fused	6
83317	Disconnect Switch 60A Fused	6
83335	Disconnect Switch 60A Non Fused	6
	WHIPS METALLIC CONN	
84132	WHIP 1/2" x 4' #10 Metallic Conn	24
84136	WHIP 1/2" x 6' #10 Metallic Conn	24
84134	WHIP 3/4" x 4' #8 Metallic Conn	24
84138	WHIP 3/4" x 6' #8 Metallic Conn	12
	WHIP NON-METALLIC CONN	
84131	WHIP 1/2" x 4' #10 Non-Metallic Conn	24
84135	WHIP 1/2" x 6' #10 Non-Metallic Conn	24
84133	WHIP 3/4" x 4' #8 Non-Metallic Conn	24
84137	WHIP 3/4" x 6' #8 Non-Metallic Conn	12

SCREWS & FASTENERS

- Standard Packs
- Bulk Packs
- Drill Point
- TPR Point
- Anchor Kits
- EZ Chuck Bits


Screws & Fasteners

SCREWS & FASTENERS	DESCRIPTION	STANDARD PACK QTY
7x1/2TPM	TPR Pt Scrw 7" x 1/2" - 1000/Box	1
7x1/2TPB15	TPR Pt Scrw 7" x 1/2" - 15000/Box	1
7x1/2TPP15	TPR Pt Scrw 7" x 1/2" - 15000/Pail	1
7x1/2TPK	TPR Pt Scrw 7" x 1/2" - 55000/Keg	1
8x1/2TPM	TPR Pt Scrw 8" x 1/2" - 1000/Box	1
8x1/2TPB12	TPR Pt Scrw 8" x 1/2" - 12000/Box	1
8x1/2TPP12	TPR Pt Scrw 8" x 1/2" - 12000/Pail	1
8x1/2TPK	TPR Pt Scrw 8" x 1/2" - 50000/Keg	1
8x3/4TPM	TPR Pt Scrw 8" x 3/4" - 1000/Box	1
8x3/4TPB	TPR Pt Scrw 8" x 3/4" - 10000/Box	1
8x1TP500	TPR Pt Scrw 8" x 1" - 500/Box	1
8x1TPB	TPR Pt Scrw 8" x 1" - 7500/Box	1
8x1-1/2TPW250	TPR Pt Scrw 8" x 1 1/2" - WH 250/Box	1
8x1-1/2TP500	TPR Pt Scrw 8" x 1 1/2" - 500/Box	1
8x1-1/2TPW500	TPR Pt Scrw 8" x 1 1/2" - W 500/Box	1
8x1-1/2TPB	TPR Pt Scrw 8" x 1 1/2" - 5000/Box	1
8x1-1/2TPWB	TPR Pt Scrw 8" x 1 1/2" - W 5000/Box	1
8x2TP250	TPR Pt Scrw 8" x 2" - 250/Box	1
8x2TPW250	TPR Pt Scrw 8" x 2" - WH 250/Box	1
8x2TPB	TPR Pt Scrw 8" x 2" - 3000/Box	1
8x2TPWB	TPR Pt Scrw 8" x 2" - WH 3000/Box	1
8x1/2DP500	Drill Pt Scrw 8" x 1/2" - 500/Box	1
8x1/2DPB	Drill Pt Scrw 8" x 1/2" - 10000/Box	1

continued on next page

continued from previous page

SCREWS & FASTENERS	DESCRIPTION	STANDARD PACK QTY
8x ³ / ₄ DP500	Drill Pt Scrw 8" x ³ / ₄ " - 500/Box	1
8x ³ / ₄ DPB	Drill Pt Scrw 8" x ³ / ₄ " - 5000/Box	1
8x1DP500	Drill Pt Scrw 8" x 1" - 500/Box	1
8x2DP250	Drill Pt Scrw 8" x 2" - 250/Box	1
10x ¹ / ₂ DP500	Drill Pt Scrw 10" x ¹ / ₂ " - 500/Box	1
10x ³ / ₄ DP500	Drill Pt Scrw 10" x ³ / ₄ " - 500/Box	1
AK ¹ / ₄ HW100	Anch KIT 10" x 1 ¹ / ₄ " - HWH 100/Box	1
EZ ¹ / ₄	Ez-Chuck ¹ / ₄ " x 1 ³ / ₄ "	1
EZ ⁵ / ₁₆	Ez-Chuck ⁵ / ₁₆ " x 1 ³ / ₄ "	1

THERMOSTAT WIRE

Complete line of UL Listed 18 gauge thermostat wire on reels.
20 gauge and bags available for order!

FEATURES

- 18 & 20 gauge wire
- 2 HRU 10 conductor
- UL listed
- Convenient reels - bags available for order



Thermostat Wire

THERMOSTAT WIRE	DESCRIPTION	STANDARD PACK QTY
TWR182	Therm Wire 18/2 Cl2,UL (Reel)	4
TWR183	Therm Wire 18/3 Cl2,UL (Reel)	4
TWR184	Therm Wire 18/4 Cl2,UL (Reel)	4
TWR185	Therm Wire 18/5 Cl2,UL (Reel)	4
TWR186	Therm Wire 18/6 Cl2,UL (Reel)	4
TWR187	Therm Wire 18/7 Cl2,UL (Reel)	4
TWR188	Therm Wire 18/8 Cl2,UL (Reel)	4
TWR189	Therm Wire 18/9 Cl2,UL (Reel)	4
TWR1810	Therm Wire 18/10 Cl2,UL (Reel)	4

LITTLEFUSE® FUSES

Littlefuse® FLNR series fuses have been the superior UL Class RK dual-element time-delay fuses, and are the most widely used class of fuses. FLNR series fuses provide excellent protection for all types of circuits especially those containing motors.

APPLICATIONS

- Service entrance switches
- Switchboard main and feeder switches
- Motor control center mains and motor branch circuits
- Individual fused combination motor controllers
- Distribution panel boards
- Industrial control panels
- Protection of fully-rated panel boards and load centers
- All general purpose circuits

SAFETY

- 200,000 A.I.R. - Reliable interruption of all over currents up to 200,000 amperes
- Faster acting short circuit protection than any non-current limiting mechanical protective device

RELIABILITY

- Accurate and reliable
- Automated, precision manufactured and assembled parts ensure accurate, consistent response to overloads and short circuits



Littlefuse® Fuses

LITTLEFUSE® FUSES	DESCRIPTION	STANDARD PACK QTY
FLNR015.T	Fuse Dual Element 15AMP	10
FLNR020.T	Fuse Dual Element 20AMP	10
FLNR025.T	Fuse Dual Element 25AMP	10
FLNR030.T	Fuse Dual Element 30AMP	10
FLNR035.T	Fuse Dual Element 35AMP	10
FLNR040.T	Fuse Dual Element 40AMP	10
FLNR045.T	Fuse Dual Element 45AMP	10
FLNR050.T	Fuse Dual Element 50AMP	10
FLNR060.T	Fuse Dual Element 60AMP	10
ONLN030.T	Fuse One Time 30AMP	10
ONLN035.T	Fuse One Time 35AMP	10
ONLN040.T	Fuse One Time 40AMP	10
ONLN045.T	Fuse One Time 45AMP	10
ONLN050.T	Fuse One Time 50AMP	10
ONLN060.T	Fuse One Time 60AMP	10

LINE SETS

Our line sets are designed especially for the HVAC market and feature the highest rated UV retardant insulation in its class. We offer many different line set combinations for quick, cost-efficient field installation of split system air conditioners and heat pumps.

PRODUCT FEATURES

- Quick, efficient and economical field installation
- Increased system efficiency using factory applied insulation
- Correct lengths for reducing waste
- Quality, consistency and economy



Line Sets

HVAC LINE SETS	DESCRIPTION	STANDARD PACK QTY
LS38343825	Line Set $\frac{3}{8}$ " x $\frac{3}{4}$ " x $\frac{3}{8}$ " 25'	13
LS38343830	Line Set $\frac{3}{8}$ " x $\frac{3}{4}$ " x $\frac{3}{8}$ " 30'	11
LS38343835	Line Set $\frac{3}{8}$ " x $\frac{3}{4}$ " x $\frac{3}{8}$ " 35'	11
LS38343850	Line Set $\frac{3}{8}$ " x $\frac{3}{4}$ " x $\frac{3}{8}$ " 50'	7
LS38341225	Line Set $\frac{3}{8}$ " x $\frac{3}{4}$ " x $\frac{1}{2}$ " 25'	11
LS38341230	Line Set $\frac{3}{8}$ " x $\frac{3}{4}$ " x $\frac{1}{2}$ " 30'	8
LS38341235	Line Set $\frac{3}{8}$ " x $\frac{3}{4}$ " x $\frac{1}{2}$ " 35'	8
LS38341250	Line Set $\frac{3}{8}$ " x $\frac{3}{4}$ " x $\frac{1}{2}$ " 50'	6
LS38343425	Line Set $\frac{3}{8}$ " x $\frac{3}{4}$ " x $\frac{3}{4}$ " 25'	5
LS38343430	Line Set $\frac{3}{8}$ " x $\frac{3}{4}$ " x $\frac{3}{4}$ " 30'	5
LS38343435	Line Set $\frac{3}{8}$ " x $\frac{3}{4}$ " x $\frac{3}{4}$ " 35'	4
LS38343450	Line Set $\frac{3}{8}$ " x $\frac{3}{4}$ " x $\frac{3}{4}$ " 50'	3
LS38783825	Line Set $\frac{3}{8}$ " x $\frac{7}{8}$ " x $\frac{3}{8}$ " 25'	11
LS38783830	Line Set $\frac{3}{8}$ " x $\frac{7}{8}$ " x $\frac{3}{8}$ " 30'	11
LS38783835	Line Set $\frac{3}{8}$ " x $\frac{7}{8}$ " x $\frac{3}{8}$ " 35'	8
LS38783850	Line Set $\frac{3}{8}$ " x $\frac{7}{8}$ " x $\frac{3}{8}$ " 50'	6
LS38781225	Line Set $\frac{3}{8}$ " x $\frac{7}{8}$ " x $\frac{1}{2}$ " 25'	8
LS38781230	Line Set $\frac{3}{8}$ " x $\frac{7}{8}$ " x $\frac{1}{2}$ " 30'	8
LS38781235	Line Set $\frac{3}{8}$ " x $\frac{7}{8}$ " x $\frac{1}{2}$ " 35'	8
LS38781250	Line Set $\frac{3}{8}$ " x $\frac{7}{8}$ " x $\frac{1}{2}$ " 50'	6

continued on next page

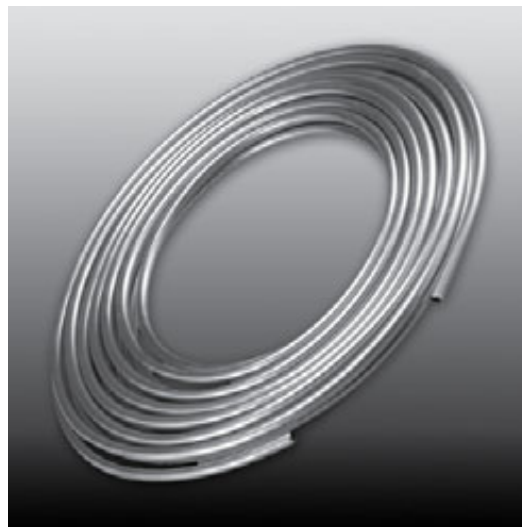
continued from previous page

HVAC LINE SETS	DESCRIPTION	STANDARD PACK QTY
LS38783835	Line Set $\frac{3}{8}$ " x $\frac{7}{8}$ " x $\frac{3}{8}$ " 35'	8
LS38783850	Line Set $\frac{3}{8}$ " x $\frac{7}{8}$ " x $\frac{3}{8}$ " 50'	6
LS38781225	Line Set $\frac{3}{8}$ " x $\frac{7}{8}$ " x $\frac{1}{2}$ " 25'	8
LS38781230	Line Set $\frac{3}{8}$ " x $\frac{7}{8}$ " x $\frac{1}{2}$ " 30'	8
LS38781235	Line Set $\frac{3}{8}$ " x $\frac{7}{8}$ " x $\frac{1}{2}$ " 35'	8
LS38781250	Line Set $\frac{3}{8}$ " x $\frac{7}{8}$ " x $\frac{1}{2}$ " 50'	6
LS38343425	Line Set $\frac{3}{8}$ " x $\frac{7}{8}$ " x $\frac{1}{2}$ " 25'	5
LS38343430	Line Set $\frac{3}{8}$ " x $\frac{7}{8}$ " x $\frac{1}{2}$ " 30'	5
LS38343435	Line Set $\frac{3}{8}$ " x $\frac{7}{8}$ " x $\frac{1}{2}$ " 35'	4
LS38343450	Line Set $\frac{3}{8}$ " x $\frac{7}{8}$ " x $\frac{1}{2}$ " 50'	3
LS381183825	Line Set $\frac{3}{8}$ " x $1\frac{1}{8}$ " x $\frac{3}{8}$ " 25'	6
LS381183830	Line Set $\frac{3}{8}$ " x $1\frac{1}{8}$ " x $\frac{3}{8}$ " 30'	6
LS381183835	Line Set $\frac{3}{8}$ " x $1\frac{1}{8}$ " x $\frac{3}{8}$ " 35'	5
LS381183850	Line Set $\frac{3}{8}$ " x $1\frac{1}{8}$ " x $\frac{3}{8}$ " 50'	5
LS381181225	Line Set $\frac{3}{8}$ " x $1\frac{1}{8}$ " x $\frac{1}{2}$ " 25'	6
LS381181230	Line Set $\frac{3}{8}$ " x $1\frac{1}{8}$ " x $\frac{1}{2}$ " 30'	6
LS381181235	Line Set $\frac{3}{8}$ " x $1\frac{1}{8}$ " x $\frac{1}{2}$ " 35'	5
LS381181250	Line Set $\frac{3}{8}$ " x $1\frac{1}{8}$ " x $\frac{1}{2}$ " 50'	5
LS381183425	Line Set $\frac{3}{8}$ " x $1\frac{1}{8}$ " x $\frac{3}{4}$ " 25'	5
LS381183430	Line Set $\frac{3}{8}$ " x $1\frac{1}{8}$ " x $\frac{3}{4}$ " 30'	4
LS381183435	Line Set $\frac{3}{8}$ " x $1\frac{1}{8}$ " x $\frac{3}{4}$ " 35'	4
LS381183450	Line Set $\frac{3}{8}$ " x $1\frac{1}{8}$ " x $\frac{1}{2}$ " 50'	2

COPPER REFRIGERATION TUBING

A complete line of ASTM tested copper refrigeration tubing is available in sizes $\frac{3}{16}$ " through $1\frac{5}{8}$ ", in 50' and 100' foot lengths.

- 50' lengths - nominal sizes - $\frac{3}{16}$ " thru $1\frac{5}{8}$ "
- 100' lengths - nominal sizes - $\frac{1}{4}$ " thru $1\frac{1}{8}$ "
- ASTM B280 specification



Copper Refrigeration Tubing

COPPER REFRIGERATION TUBING	DESCRIPTION	STANDARD PACK QTY
CT316X500D	Copper Ref Tubing $\frac{3}{16}$ " x 50'	10
CT14X500D	Copper Ref Tubing $\frac{1}{4}$ " x 50'	10
CT516X500D	Copper Ref Tubing $\frac{5}{16}$ " x 50'	10
CT38X500D	Copper Ref Tubing $\frac{3}{8}$ " x 50'	5
CT12X500D	Copper Ref Tubing $\frac{1}{2}$ " x 50'	5
CT58X500D	Copper Ref Tubing $\frac{5}{8}$ " x 50'	5
CT34X500D	Copper Ref Tubing $\frac{3}{4}$ " x 50'	5
CT78X500D	Copper Ref Tubing $\frac{7}{8}$ " x 50'	1
CT118X500D	Copper Ref Tubing $1\frac{1}{8}$ " x 50'	1
CT138X500D	Copper Ref Tubing $1\frac{3}{8}$ " x 50'	1
CT158X500D	Copper Ref Tubing $1\frac{5}{8}$ " x 50'	1
CT14X1000D	Copper Ref Tubing $\frac{1}{4}$ " x 100'	5
CT516X1000D	Copper Ref Tubing $\frac{5}{16}$ " x 100'	1
CT38X1000D	Copper Ref Tubing $\frac{3}{8}$ " x 100'	1
CT12X1000D	Copper Ref Tubing $\frac{1}{2}$ " x 100'	1
CT58X1000D	Copper Ref Tubing $\frac{5}{8}$ " x 100'	1
CT34X1000D	Copper Ref Tubing $\frac{3}{4}$ " x 100'	1
CT78X1000D	Copper Ref Tubing $\frac{7}{8}$ " x 100'	1
CT118X1000D	Copper Ref Tubing $1\frac{1}{8}$ " x 100'	1

COPPER FITTINGS

- Manufactured to ASTM B88 specs
- Milled to ASTM B75 Alloy C12200
- NSF-61 approved - lead free


Copper Fittings

COPPER FITTINGS	DESCRIPTION	STANDARD PACK QTY
CFW02009	3/8" OD 90 ELL CXC	25
CFW02017	1/2" OD 90 ELL CXC	25
CFW02028	3/4" OD 90 ELL CXC	25
CFW02034	7/8" OD 90 ELL CXC	25
CFW02047	1 1/8" OD 90 ELL CXC	10
CFW02312	3/8" OD 90 STR ELL CXC	25
CFW02321	1/2" OD 90 STR ELL CXC	25
CFW02326	5/8" OD 90 STR ELL CXC	25
CFW02330	3/4" OD 90 STR ELL CXC	25
CFW02334	7/8" OD 90 STR ELL CXC	10
CFW02344	1 1/8" OD 90 STR ELL CXC	10
CFW02716	3/8" OD 90 Long ELL CXC	25
CFW02717	1/2" OD 90 Long ELL CXC	25
CFW02722	5/8" OD 90 Long ELL CXC	25
CFW02728	3/4" OD 90 Long ELL CXC	25
CFW02734	7/8" OD 90 Long ELL CXC	10
CFW02747	1 1/8" OD 90 Long ELL CXC	10
CFW02809	1/8" OD 90 STR Long ELL FTCXC	25
CFW02817	1/2" OD 90 STR Long ELL FTCXC	25
CFW02822	5/8" OD 90 STR Long ELL FTCXC	25
CFW02828	3/4" OD 90 STR Long ELL FTCXC	25
CFW02834	7/8" OD 90 STR Long ELL FTCXC	10

continued on next page

continued from previous page

COPPER FITTINGS	DESCRIPTION	STANDARD PACK QTY
CFW02847	1 1/8" OD 90 STR Long ELL FTCXC	10
CFW03012	3/8" OD 45 ELL CXC	25
CFW03021	1/2" OD 45 ELL CXC	25
CFW03026	5/8" OD 45 ELL CXC	25
CFW03030	3/4" OD 45 ELL CXC	25
CFW03034	7/8" OD 45 ELL CXC	25
CFW03044	1 1/8" OD 45 ELL CXC	10
CFW03312	3/8" OD 45 STR ELL CXC	25
CFW03321	1/2" OD 45 STR ELL CXC	25
CFW03326	5/8" OD 45 STR ELL CXC	25
CFW03330	3/4" OD 45 STR ELL CXC	25
CFW03334	7/8" OD 45 STR ELL CXC	25
CFW03344	1 1/8" OD 45 STR ELL CXC	10
CFW01009	3/8" OD Coupling	25
CFW01017	1/2" OD Coupling	25
CFW01022	5/8" OD Coupling	25
CFW01028	3/4" OD Coupling	25
CFW01034	7/8" OD Coupling	25
CFW01047	1 1/8" OD Coupling	10
CFW01011	3/8" x 1/4" OD Reducing Coupling	25
CFW01023	5/8" x 1/2" OD Reducing Coupling	25
CFW01025	5/8" x 3/8" OD Reducing Coupling	25
CFW01029	3/4" x 5/8" OD Reducing Coupling	25
CFW01030	3/4" x 1/2" OD Reducing Coupling	25
CFW01035	7/8" x 3/4" OD Reducing Coupling	25
CFW01036	7/8" x 5/8" OD Reducing Coupling	25
CFW01049	1 1/8" x 7/8" OD Reducing Coupling	10
CFW01306	3/8" x 1/4" OD FTG Reducer	25
CFW01312	1/2" x 3/8" OD FTG Reducer	25
CFW01315	5/8" x 1/2" OD FTG Reducer	25
CFW01317	5/8" x 3/8" OD FTG Reducer	25
CFW01325	7/8" x 3/4" OD FTG Reducer	25
CFW01326	7/8" x 5/8" OD FTG Reducer	25
CFW01337	1 1/8" x 7/8" OD FTG Reducer	10
CFW01338	1 1/8" x 3/4" OD FTG Reducer	10
CFW01125	1/2" x 3/8" OD Male Adapter	25
CFW01131	5/8" x 1/2" OD Male Adapter	25
CFW01130	5/8" x 3/4" OD Male Adapter	25

continued on next page

continued from previous page

COPPER FITTINGS	DESCRIPTION	STANDARD PACK QTY
CFW02847	1½" OD 90 STR Long ELL FTCXC	10
CFW03012	¾" OD 45 ELL CXC	25
CFW03021	½" OD 45 ELL CXC	25
CFW03026	⅝" OD 45 ELL CXC	25
CFW03030	¾" OD 45 ELL CXC	25
CFW03034	⅞" OD 45 ELL CXC	25
CFW03044	1⅛" OD 45 ELL CXC	10
CFW03312	¾" OD 45 STR ELL CXC	25
CFW03321	½" OD 45 STR ELL CXC	25
CFW03326	⅝" OD 45 STR ELL CXC	25
CFW03330	¾" OD 45 STR ELL CXC	25
CFW03334	⅞" OD 45 STR ELL CXC	25
CFW03344	1⅛" OD 45 STR ELL CXC	10
CFW01009	¾" OD Coupling	25
CFW01017	½" OD Coupling	25
CFW01022	⅝" OD Coupling	25
CFW01028	¾" OD Coupling	25
CFW01034	⅞" OD Coupling	25
CFW01047	1⅛" OD Coupling	10
CFW01011	¾" x ¼" OD Reducing Coupling	25
CFW01023	⅝" x ½" OD Reducing Coupling	25
CFW01025	⅝" x ⅜" OD Reducing Coupling	25
CFW01029	¾" x ⅝" OD Reducing Coupling	25
CFW01030	¾" x ½" OD Reducing Coupling	25
CFW01035	⅞" x ¾" OD Reducing Coupling	25
CFW01036	⅞" x ⅝" OD Reducing Coupling	25
CFW01049	1⅛" x ⅞" OD Reducing Coupling	10
CFW01306	¾" x ¼" OD FTG Reducer	25
CFW01312	½" x ⅜" OD FTG Reducer	25
CFW01315	⅝" x ½" OD FTG Reducer	25
CFW01317	⅝" x ⅜" OD FTG Reducer	25
CFW01325	⅞" x ¾" OD FTG Reducer	25
CFW01326	⅞" x ⅝" OD FTG Reducer	25
CFW01337	1⅛" x ⅞" OD FTG Reducer	10
CFW01338	1⅛" x ¾" OD FTG Reducer	10
CFW01125	½" x ⅜" OD Male Adapter	25
CFW01131	⅝" x ½" OD Male Adapter	25
CFW01130	⅝" x ¾" OD Male Adapter	25

continued on next page

continued from previous page

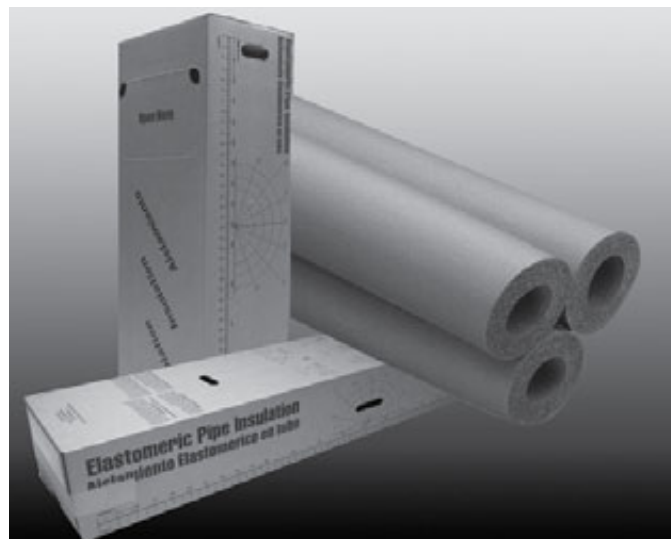
COPPER FITTINGS	DESCRIPTION	STANDARD PACK QTY
CFW01146	7/8" x 3/4" OD Male Adapter	25
CFW01163	1 1/8" x 1" OD Male Adapter	10
CFW01164	1 1/8" x 3/4" OD Male Adapter	10
CFW01225	1/2" x 3/8" OD Female Adapter	25
CFW01231	5/8" x 1/2" OD Female Adapter	25
CFW01230	5/8" x 3/4" OD Female Adapter	25
CFW01246	7/8" x 3/4" OD Female Adapter	25
CFW01247	7/8" x 1/2" OD Female Adapter	25
CFW01263	1 1/8" x 1" OD Female Adapter	10
CFW07004	3/8" OD Cap	25
CFW07006	1/2" OD Cap	25
CFW07007	5/8" OD Cap	25
CFW07008	3/4" OD Cap	25
CFW07009	7/8" OD Cap	25
CFW04001	1/2" OD Tee	25
CFW04006	5/8" OD Tee	25
CFW04017	3/4" OD Tee	25
CFW04031	7/8" OD Tee	20
CFW04048	1 1/8" OD Tee	10

PIPE INSULATION

Pipe Insulation is a flexible, closed cell and light weight elastomeric material designed for insulating liquid cooling and heating lines. Pipe Insulation is available in $\frac{3}{8}$ ", $\frac{1}{2}$ ", $\frac{3}{4}$ " and 1" thickness, and popular sizes up to 1 $\frac{1}{8}$ " ID. Insul-Tube® 6-foot is a black, flexible elastomeric foam tube used to retard heat gain and prevent condensation on piping applications. The closed cell properties of Insul-Tube® 6-foot (unslit) create an exceptional insulation, protect against moisture penetration and provide the best solution for applications within a -297°F to 220°F temperature range.

PRODUCT FEATURES

- Greenguard certified
- Low conductivity
- Easy to install
- Non-porous and non-fibrous. Resist mold, fungal and microbial growth. Treated with anti-microbial agent
- Versatile, for heating, AC, refrigeration, and plumbing



Pipe Insulation

INSULTUBE PART NUMBER	DESCRIPTION	STANDARD PACK QTY
6RX028118	AC Insultube 1 $\frac{1}{8}$ " x $\frac{1}{2}$ " x 6' (36 Length Per Box)	41
INSULTUBE 1/2"		
6RX048058	CG Insultube $\frac{5}{8}$ " x $\frac{1}{2}$ " x 6' AC5812	54
6RX048068	Insultube $\frac{3}{4}$ " x $\frac{1}{2}$ " x 6' AC3412	45
6RX048078	Insultube $\frac{7}{8}$ " x $\frac{1}{2}$ " x 6' AC7812	38
6RX048118	Insultube 1 $\frac{1}{8}$ " x $\frac{1}{2}$ " x 6' AC11812	26
INSULTUBE 3/4"		
6RX068058	Insultube $\frac{5}{8}$ " x $\frac{3}{4}$ " x 6' (42 Length Per Box)	30
6RX068068	Insultube $\frac{3}{4}$ " x $\frac{3}{4}$ " x 6' (30 Length Per Box)	24
6RX068078	Insultube $\frac{7}{8}$ " x $\frac{3}{4}$ " x 6' (30 Length Per Box)	21
6RX068118	Insultube 1 $\frac{1}{8}$ " x $\frac{3}{4}$ " x 6' (20 Length Per Box)	15
INSULTUBE 1"		
6RX100058	Insultube $\frac{5}{8}$ " x 1" x 6' (20 Length Per Box)	18
6RX100068	Insultube $\frac{3}{4}$ " x 1" x 6' (20 Length Per Box)	18
6RX100078	Insultube $\frac{7}{8}$ " x 1" x 6' (20 Length Per Box)	15
6RX100118	Insultube 1 $\frac{1}{8}$ " x 1" x 6' (16 Length Per Box)	11

continued on next page

K-FLEX TAPES

High Quality Self-Adhesive Insulation Foam Tape

K-FLEX is a flexible and self adhering foam tape and is made from the same high quality EPDM material that our Aerocel and Aerocel-CG closed cell insulation is made from.

K-FLEX is ideal for wrapping hot and cold pipe, tubing and fittings. K-FLEX is easy to use and prevents condensation. K-FLEX is designed to prevent heat gain, heat loss and prevent frost from forming on chilled water tubing and refrigeration lines.



KFlex Foam & Cork Tape

PART NUMBER	DESCRIPTION	STANDARD PACK QTY
800-EL-018	Foam Tape 1/8" x 2" x 30'	12
800-TAPE-CRK	Cork Tape 1/8" x 2" x 30'	12

THERMOPLASTIC PIPING

IPEX designs and manufactures one of the world's largest and most diverse lines of integrated thermoplastic piping systems - pipe, valves, fittings, auxiliary components and tools - all engineered from the ground up to handle the full range of today's municipal, industrial, commercial and residential applications.



IPEX Thermoplastic Piping

THERMOPLASTIC PIPING	DESCRIPTION	STANDARD PACK QTY
PVC34x10	PVC Pipe ¾" 10' sch 40	50' Length
PVC2x10	PVC Pipe 2" 10' sch 40	10' Length
PVC3x10	PVC Pipe 3" 10' sch 40	10' Length
PVC34x10-200PSI	PVC Pipe ¾" 10' psi 200	50' Length
PVC34T	PVC Tee ¾"	45
PVC3490	PVC 90 Ell ¾"	75
PVC290	PVC 90 Ell 2"	20
PVC34S90	PVC 90 Street Ell ¾"	50
PVC3445	PVC 45 Ell ¾"	50
PVC345	PVC 45 Ell 3"	10
PVC34C0	PVC Coupling ¾"	45
PVC34FA	PVC Female Adapter ¾"	60
PVC34MA	PVC Male Adapter ¾"	60
PVC34PL	PVC Plug ¾"	50
PVC2LS90	PVC 2 IN LONG SWEEP 90	25
PVC3LS90	PVC 3 IN LONG SWEEP 90	10

FASSON® TAPES & ADHESIVES

Pressure Sensitive Solutions for HVAC/R & Industrial Insulation Applications

FASSON® brand tapes meet or exceed UL 181A-P and UL 181B-FX standards. Contractors can choose from a complete line of plain foil, FSK, ASJ, and cloth duct tapes, classified in accordance with UL 723. These closure tapes are well-suited for delivering a fast, permanent bond and creating a moisture barrier for sealing ductboard, flexible duct, and insulation facings.

- Fiberglass ductboard
- Flexible ductwork
- Hanging & sealing
- Insulation facings
 - Pipe insulation
 - Metal building insulation

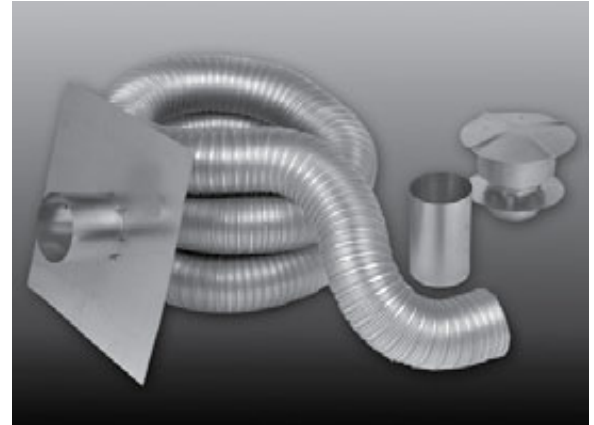


Fasson® Tapes & Adhesives

FASSON® TAPES & ADHESIVES	DESCRIPTION	STANDARD PACK QTY
	FASSON FOIL	
0800-2.5	FASSON 0800 – 2.5" Foil	16
0800-3	FASSON 0800 – 3.0" Foil	16
0802-2	FASSON 0802 – 2.0" Foil	24
0802-2.5	FASSON 0802 – 2.5" Foil	16
0802-3	FASSON 0802 – 3.0" Foil	16
0821-3	FASSON 0821 – 3.0" Foil	16
0810-2.5	FASSON 0810 – 2.5" Foil	16
0810-3	FASSON 0810 – 3.0" Foil	16
	FASSON CLOTH DUCT TAPE	
950S	FASSON 950S – 48mm Cloth Duct Tape	24
950B	FASSON 950B – 48mm Cloth Duct Tape	24
955M	FASSON 955M – 48mm Cloth Duct Tape	24
957B	FASSON 957B - 48mm UL Cloth Duct Tape	24
957S	FASSON 957S - 48mm UL Cloth Duct Tape	24
957M	FASSON 957M - 48mm UL Cloth Duct Tape	24
	FASSON FILM TAPE	
FT48B	FASSON FAS-FLEX - 48mm Film Tape	36
FT72B	FASSON FAS-FLEX - 72mm Film Tape	24
FT48M	FASSON FAS-FLEX - 48mm Film Tape	36
FT72M	FASSON FAS-FLEX - 72mm Film Tape	24
	FASSON SPRAY ADHESIVE	
1000S	FASSON 1000S - Spray Adhesive	12
	INSULATION TAPES - BY K-FLEX	
800-EL-018	Foam Tape 1/8" x 2" x 30"	12
800-TAPE-CRK	Cork Tape 1/8" x 2" x 30"	12

CHIMNEY LINER KITS

- Available in 3", 4", 5", 6", 10" diameters
- Available in increments up to 50 ft.
- UL listed aluminum chimney liner kit for category I gas fired heating equipment and gas fireplaces

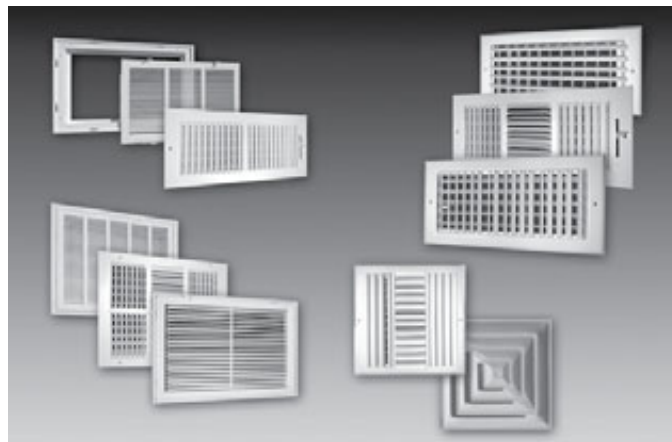


Chimney Liner Kits

CHIMNEY LINER KITS	DESCRIPTION	STANDARD PACK QTY
2GACKIT0325	Chimney Liner Kit 3" x 25'	1
2GACKIT0335	Chimney Liner Kit 3" x 35'	1
2GACKIT0425	Chimney Liner Kit 4" x 25'	1
2GACKIT0435	Chimney Liner Kit 4" x 35'	1
2GACKIT0445	Chimney Liner Kit 4" x 45'	1
2GACKIT0525	Chimney Liner Kit 5" x 25'	1
2GACKIT0535	Chimney Liner Kit 5" x 35'	1
2GACKIT0545	Chimney Liner Kit 5" x 45'	1
2GACKIT0625	Chimney Liner Kit 6" x 25'	1
2GACKIT0635	Chimney Liner Kit 6" x 35'	1
2GACKIT1035	Chimney Liner Kit 10" x 35'	1

TRUAIRE GRILLES & REGISTERS

- High quality stamped steel and aluminum grilles
- “Smooth glide” manufacturing process
- Baked powder cost finish
- Rust resistant. Painted before assembly!
- Quiet, won't rattle!
- Multitude of residential and light commercial grille solutions


Truair Grilles & Registers

TRUAIRE GRILLES & REGISTERS	DESCRIPTION	STANDARD PACK QTY
	BASEBOARD GRILLE	
122R14X06	Baseboard R/A Grille ¾" Turnback	10
122R14X08	Baseboard R/A Grille ¾" Turnback	10
122R30X06	Baseboard R/A Grille ¾" Turnback	10
122R30X08	Baseboard R/A Grille ¾" Turnback	10
150TSB02X10	Toe Space Grille Brown	20
150TSB02X12	Toe Space Grille Brown	20
150TSB02X14	Toe Space Grille Brown	20
154R04X08	Heavy Duty Floor Return Brown	10
154R04X10	Heavy Duty Floor Return Brown	10
154R04X12	Heavy Duty Floor Return Brown	10
154R08X12	Heavy Duty Floor Return Brown	10
154R08X24	Heavy Duty Floor Return Brown	5
154R10X20	Heavy Duty Floor Return Brown	5
154R12X12	Heavy Duty Floor Return Brown	5
154R12X20	Heavy Duty Floor Return Brown	5
154R12X24	Heavy Duty Floor Return Brown	5
154R14X14	Heavy Duty Floor Return Brown	5
154R14X20	Heavy Duty Floor Return Brown	5
154R16X16	Heavy Duty Floor Return Brown	2
154R16X20	Heavy Duty Floor Return Brown	2
154R24X24	Heavy Duty Floor Return Brown	2

continued on next page

continued from previous page

TRUAIRE GRILLES & REGISTERS	DESCRIPTION	STANDARD PACK QTY
	RETURN AIR GRILLE, STAMPED	
17006X06	Return Air Grille, Stamped	40
17008X04	Return Air Grille, Stamped	40
17008X08	Return Air Grille, Stamped	40
17010X06	Return Air Grille, Stamped	40
17010X08	Return Air Grille, Stamped	40
17010X10	Return Air Grille, Stamped	40
17012X06	Return Air Grille, Stamped	40
17012X08	Return Air Grille, Stamped	20
17012X12	Return Air Grille, Stamped	20
17012X20	Return Air Grille, Stamped	10
17012X24	Return Air Grille, Stamped	10
17014X06	Return Air Grille, Stamped	40
17014X08	Return Air Grille, Stamped	20
17014X10	Return Air Grille, Stamped	20
17014X14	Return Air Grille, Stamped	20
17014X20	Return Air Grille, Stamped	10
17016X06	Return Air Grille, Stamped	40
17016X08	Return Air Grille, Stamped	20
17016X16	Return Air Grille, Stamped	10
17016X20	Return Air Grille, Stamped	10
17016X25	Return Air Grille, Stamped	10
17016X36	Return Air Grille, Stamped	10
17018X06	Return Air Grille, Stamped	20
17018X08	Return Air Grille, Stamped	20
17018X10	Return Air Grille, Stamped	20
17018X12	Return Air Grille, Stamped	20
17018X18	Return Air Grille, Stamped	10
17018X24	Return Air Grille, Stamped	10
17020X06	Return Air Grille, Stamped	20
17020X08	Return Air Grille, Stamped	10
17020X10	Return Air Grille, Stamped	10
17020X12	Return Air Grille, Stamped	10
17020X14	Return Air Grille, Stamped	10
17020X16	Return Air Grille, Stamped	10
17020X18	Return Air Grille, Stamped	10
17020X20	Return Air Grille, Stamped	10
17020X24	Return Air Grille, Stamped	10

continued on next page

continued from previous page

TRUAIRE GRILLES & REGISTERS	DESCRIPTION	STANDARD PACK QTY
17020X25	Return Air Grille, Stamped	10
17020X30	Return Air Grille, Stamped	5
17024X06	Return Air Grille, Stamped	20
17024X08	Return Air Grille, Stamped	10
17024X12	Return Air Grille, Stamped	10
17024X14	Return Air Grille, Stamped	10
17024X16	Return Air Grille, Stamped	10
17024X18	Return Air Grille, Stamped	10
17024X20	Return Air Grille, Stamped	10
17024X24	Return Air Grille, Stamped	5
17025X20	Return Air Grille, Stamped	10
17030X06	Return Air Grille, Stamped	20
17030X08	Return Air Grille, Stamped	10
17030X12	Return Air Grille, Stamped	10
17030X14	Return Air Grille, Stamped	10
17030X16	Return Air Grille, Stamped	10
17030X18	Return Air Grille, Stamped	10
17036X06	Return Air Grille, Stamped	10
17036X12	Return Air Grille, Stamped	10
17036X18	Return Air Grille, Stamped	5
17036X24	Return Air Grille, Stamped	5
	STAMPED FILTER GRILLE, REMOVABLE FACE	
190RF10X10	Stamped Filter Grille Removable Face	10
190RF12X12	Stamped Filter Grille Removable Face	10
190RF12X20	Stamped Filter Grille Removable Face	5
190RF12X24	Stamped Filter Grille Removable Face	5
190RF12X30	Stamped Filter Grille Removable Face	5
190RF14X14	Stamped Filter Grille Removable Face	5
190RF14X20	Stamped Filter Grille Removable Face	ea
190RF14X30	Stamped Filter Grille Removable Face	ea
190RF16X16	Stamped Filter Grille Removable Face	5
190RF16X20	Stamped Filter Grille Removable Face	5
190RF16X25	Stamped Filter Grille Removable Face	ea
190RF16X30	Stamped Filter Grille Removable Face	ea
190RF16X36	Stamped Filter Grille Removable Face	ea
190RF18X12	Stamped Filter Grille Removable Face	5
190RF18X18	Stamped Filter Grille Removable Face	5
190RF18X24	Stamped Filter Grille Removable Face	ea

continued on next page

continued from previous page

TRUAIRE GRILLES & REGISTERS	DESCRIPTION	STANDARD PACK QTY
190RF18X30	Stamped Filter Grille Removable Face	ea
190RF18X36	Stamped Filter Grille Removable Face	ea
190RF20X12	Stamped Filter Grille Removable Face	5
190RF20X14	Stamped Filter Grille Removable Face	5
190RF20X16	Stamped Filter Grille Removable Face	5
190RF20X20	Stamped Filter Grille Removable Face	ea
190RF20X24	Stamped Filter Grille Removable Face	ea
190RF20X25	Stamped Filter Grille Removable Face	ea
190RF20X30	Stamped Filter Grille Removable Face	ea
190RF24X10	Stamped Filter Grille Removable Face	5
190RF24X12	Stamped Filter Grille Removable Face	5
190RF24X14	Stamped Filter Grille Removable Face	5
190RF24X18	Stamped Filter Grille Removable Face	ea
190RF24X20	Stamped Filter Grille Removable Face	ea
190RF24X24	Stamped Filter Grille Removable Face	ea
190RF24X30	Stamped Filter Grille Removable Face	ea
190RF25X16	Stamped Filter Grille Removable Face	ea
190RF25X20	Stamped Filter Grille Removable Face	ea
190RF30X12	Stamped Filter Grille Removable Face	ea
190RF30X14	Stamped Filter Grille Removable Face	ea
190RF30X20	Stamped Filter Grille Removable Face	ea
190RF30X10	Stamped Filter Grille Removable Face	5
190RF30X16	Stamped Filter Grille Removable Face	ea
190RF30X18	Stamped Filter Grille Removable Face	ea
190RF30X24	Stamped Filter Grille Removable Face	ea
190RF36X12	Stamped Filter Grille Removable Face	ea
190RF36X18	Stamped Filter Grille Removable Face	ea
190RF40X20	Stamped Filter Grille Removable Face	ea
190RF50X20	Stamped Filter Grille Removable Face	ea
	VERTICAL BAR TYPE SINGLE DEFLECTION REGISTER	
210VM08X04	Vert. Bar Type Single Deflection Register	20
210VM08X08	Vert. Bar Type Single Deflection Register	20
210VM10X04	Vert. Bar Type Single Deflection Register	20
210VM10X06	Vert. Bar Type Single Deflection Register	20
210VM10X08	Vert. Bar Type Single Deflection Register	20
210VM12X06	Vert. Bar Type Single Deflection Register	20
210VM14X06	Vert. Bar Type Single Deflection Register	10
210VM14X08	Vert. Bar Type Single Deflection Register	10

continued on next page

continued from previous page

TRUAIRE GRILLES & REGISTERS	DESCRIPTION	STANDARD PACK QTY
	1 WAY STAMPED CEIL/SIDEWALL	
101D14X06	1 way Stamped Ceil/Sidewall (down)	20
101D10X06	1 way Stamped Ceil/Sidewall (down)	20
101D12X06	1 way Stamped Ceil/Sidewall (down)	20
	2 WAY STAMPED CEIL/SIDEWALL	
102M08X04	2 way Stamped Ceil/Sidewall Reg	40
102M08X06	2 way Stamped Ceil/Sidewall Reg	20
102M10X04	2 way Stamped Ceil/Sidewall Reg	40
102M10X06	2 way Stamped Ceil/Sidewall Reg	20
102M10X08	2 way Stamped Ceil/Sidewall Reg	20
102M12X04	2 way Stamped Ceil/Sidewall Reg	20
102M12X06	2 way Stamped Ceil/Sidewall Reg	20
102M12X08	2 way Stamped Ceil/Sidewall Reg	20
102M14X06	2 way Stamped Ceil/Sidewall Reg	20
102M16X06	2 way Stamped Ceil/Sidewall Reg	20
	3 WAY STAMPED CEIL/SIDEWALL	
103M08X04	3 way Stamped Ceil/Sidewall Reg	40
103M10X04	3 way Stamped Ceil/Sidewall Reg	40
103M10X06	3 way Stamped Ceil/Sidewall Reg	20
103M10X08	3 way Stamped Ceil/Sidewall Reg	20
103M10X10	3 way Stamped Ceil/Sidewall Reg	20
103M12X06	3 way Stamped Ceil/Sidewall Reg	20
103M12X08	3 way Stamped Ceil/Sidewall Reg	20
103M14X06	3 way Stamped Ceil/Sidewall Reg	20
103M14X08	3 way Stamped Ceil/Sidewall Reg	10
	4 WAY STAMPED CEIL/SIDEWALL	
104M06X06	4 way Stamped Ceil/Sidewall Reg	40
104M08X08	4 way Stamped Ceil/Sidewall Reg	20
104M10X10	4 way Stamped Ceil/Sidewall Reg	20
104M12X12	4 way Stamped Ceil/Sidewall Reg	10
	1 WAY ADJUSTABLE CURVED BLADE REG	
301M08X04	1 way Adjustable Curved Blade Reg	20
301M10X06	1 way Adjustable Curved Blade Reg	20
301M10X08	1 way Adjustable Curved Blade Reg	10
301M12X06	1 way Adjustable Curved Blade Reg	10
301M12X08	1 way Adjustable Curved Blade Reg	10
301M14X06	1 way Adjustable Curved Blade Reg	10
301M14X08	1 way Adjustable Curved Blade Reg	10

continued on next page

continued from previous page

TRUAIRE GRILLES & REGISTERS	DESCRIPTION	STANDARD PACK QTY
303M08X04	1 way Adjustable Curved Blade Reg	20
303M10X06	1 way Adjustable Curved Blade Reg	10
303M12X06	1 way Adjustable Curved Blade Reg	10
303M14X06	1 way Adjustable Curved Blade Reg	10
303M14X08	1 way Adjustable Curved Blade Reg	10
304M06X06	1 way Adjustable Curved Blade Reg	20
304M08X08	1 way Adjustable Curved Blade Reg	10
304M10X10	1 way Adjustable Curved Blade Reg	10
304M12X12	1 way Adjustable Curved Blade Reg	10
1 WAY STAMPED CURVED BLADE REG		
401M06X06	1 way Stamped Curved Blade Reg	40
401M08X04	1 way Stamped Curved Blade Reg	40
401M08X06	1 way Stamped Curved Blade Reg	20
401M10X04	1 way Stamped Curved Blade Reg	20
401M10X06	1 way Stamped Curved Blade Reg	20
401M10X08	1 way Stamped Curved Blade Reg	20
401M10X10	1 way Stamped Curved Blade Reg	20
401M12X06	1 way Stamped Curved Blade Reg	20
401M12X08	1 way Stamped Curved Blade Reg	20
401M12X12	1 way Stamped Curved Blade Reg	10
401M14X06	1 way Stamped Curved Blade Reg	20
401M14X08	1 way Stamped Curved Blade Reg	10
2 WAY STAMPED CURVED BLADE REG		
402HM08X04	2 way Horiz. Stamped Curved Blade Reg	40
402HM10X06	2 way Horiz. Stamped Curved Blade Reg	20
402HM12X06	2 way Horiz. Stamped Curved Blade Reg	20
402HM12X08	2 way Horiz. Stamped Curved Blade Reg	20
402VM10X06	2 way Vert. Stamped Curved Blade Reg	20
402VM10X10	2 way Vert. Stamped Curved Blade Reg	20
402VM12X06	2 way Vert. Stamped Curved Blade Reg	20
402VM12X08	2 way Vert. Stamped Curved Blade Reg	20
402VM12X12	2 way Vert. Stamped Curved Blade Reg	20
3 WAY STAMPED CURVED BLADE REG		
403M08X04	3 way Stamped Curved Blade Reg	40
403M08X08	3 way Stamped Curved Blade Reg	20
403M10X06	3 way Stamped Curved Blade Reg	20
403M10X08	3 way Stamped Curved Blade Reg	20
403M10X10	3 way Stamped Curved Blade Reg	20

continued on next page

continued from previous page

TRUAIRE GRILLES & REGISTERS	DESCRIPTION	STANDARD PACK QTY
403M12X06	3 way Stamped Curved Blade Reg	20
403M12X08	3 way Stamped Curved Blade Reg	20
403M12X12	3 way Stamped Curved Blade Reg	10
403M14X06	3 way Stamped Curved Blade Reg	20
403M14X08	3 way Stamped Curved Blade Reg	10
404M06X06	4 way Stamped Curved Blade Reg	40
404M08X08	4 way Stamped Curved Blade Reg	20
404M10X10	4 way Stamped Curved Blade Reg	20
404M12X12	4 way Stamped Curved Blade Reg	10
STEP DOWN DIFFUSER, 2 CONE		
2003CD06	Step Down Diffuser, 2 cone	2
2003CD08	Step Down Diffuser, 2 cone	2
2003CD10	Step Down Diffuser, 2 cone	2
2003CD12	Step Down Diffuser, 2 cone	2
STEP DOWN DIFFUSER, 2 CONE W/R6 INS		
2003CD06IN	Step Down Diff 2 cone W/R6 Ins	2
2003CD08IN	Step Down Diff 2 cone W/R6 Ins	2
2003CD10IN	Step Down Diff 2 cone W/R6 Ins	2
2003CD12IN	Step Down Diff 2 cone W/R6 Ins	2
STEP DOWN DIFFUSER, 3 CONE		
2004CD06	Step Down Diffuser, 3 cone	2
2004CD08	Step Down Diffuser, 3 cone	2
2004CD10	Step Down Diffuser, 3 cone	2
2004CD12	Step Down Diffuser, 3 cone	2
STEP DOWN DIFFUSER, 3 CONE W/R6 INS		
2004CD06IN	Step Down Diff 3 cone W/R6 Ins	2
2004CD08IN	Step Down Diff 3 cone W/R6 Ins	2
2004CD10IN	Step Down Diff 3 cone W/R6 Ins	2
2004CD12IN	Step Down Diff 3 cone W/R6 Ins	2
BASEBOARD REGISTER SUPPLY		
118SW	18" Baseboard Register Supply White	20
STAMPED FLOOR REGISTER		
150MB02X10	Stamped Floor Register Brown	20
150MB02X12	Stamped Floor Register Brown	20
150MB02X14	Stamped Floor Register Brown	20
150MB04X08	Stamped Floor Register Brown	20
150MB04X10	Stamped Floor Register Brown	20
150MB04X12	Stamped Floor Register Brown	20

continued on next page

continued from previous page

TRUAIRE GRILLES & REGISTERS	DESCRIPTION	STANDARD PACK QTY
150MB04X14	Stamped Floor Register Brown	10
150MB06X10	Stamped Floor Register Brown	10
150MB06X12	Stamped Floor Register Brown	10
150MB06X14	Stamped Floor Register Brown	10
150MW04X10	Stamped Floor Register Brown	20
150MW04X12	Stamped Floor Register Brown	10
	T-BAR SUPPLY	
1010MAS	24" x 24" Perforated T-Bar Supply w/molded back	2
4010FG	24" x 24" T-Bar R/A Filt Grl	2
4010FG-DB	24" x 24" T-Bar R/A Filt Grl W/Box R6 Back	2

QUIETFLEX® INSULATED SLEEVE

The Quietflex® Insulated Sleeve is ideal for use in insulating new or existing hard pipe. It increases the efficiency of warm or cool air traveling through the duct and reduces condensation build-up.

PRODUCT FEATURES

- Johns Manville Formaldehyde-Free™ fiber glass insulation
- Available in reinforced metallic polyester vapor barrier or in polyethylene vapor barrier
- Available in R-4.2, R-6.0, and R-8.0
- Standard length: 5'
- One starter cap included in each box



Quietflex® Insulated Sleeve



QUIETFLEX® INSULATED SLEEVE	DESCRIPTION	FT PER BOX
R-4.2	INSULATED SLEEVE	PER BOX
SS0442	R-4.2 Silver Sleeve, 5' pieces	75'
SS0542	R-4.2 Silver Sleeve, 5' pieces	75'
SS0642	R-4.2 Silver Sleeve, 5' pieces	75'
SS0742	R-4.2 Silver Sleeve, 5' pieces	75'
SS0842	R-4.2 Silver Sleeve, 5' pieces	75'
SS0942	R-4.2 Silver Sleeve, 5' pieces	75'
SS1042	R-4.2 Silver Sleeve, 5' pieces	50'
SS1242	R-4.2 Silver Sleeve, 5' pieces	50'
SS1442	R-4.2 Silver Sleeve, 5' pieces	50'
SS1642	R-4.2 Silver Sleeve, 5' pieces	50'
R-6.0	INSULATED SLEEVE	PER BOX
SS0460	R-6.0 Silver Sleeve, 5' pieces	75'
SS0560	R-6.0 Silver Sleeve, 5' pieces	75'
SS0660	R-6.0 Silver Sleeve, 5' pieces	75'
SS0760	R-6.0 Silver Sleeve, 5' pieces	75'
SS0860	R-6.0 Silver Sleeve, 5' pieces	75'
SS0960	R-6.0 Silver Sleeve, 5' pieces	75'
SS1060	R-6.0 Silver Sleeve, 5' pieces	50'

continued on next page

continued from previous page

QUIETFLEX® INSULATED SLEEVE	DESCRIPTION	FT PER BOX
R-4.2	INSULATED SLEEVE	PER BOX
SS0442	R-4.2 Silver Sleeve, 5' pieces	75'
SS0542	R-4.2 Silver Sleeve, 5' pieces	75'
SS0642	R-4.2 Silver Sleeve, 5' pieces	75'
SS0742	R-4.2 Silver Sleeve, 5' pieces	75'
SS0842	R-4.2 Silver Sleeve, 5' pieces	75'
SS0942	R-4.2 Silver Sleeve, 5' pieces	75'
SS1042	R-4.2 Silver Sleeve, 5' pieces	50'
SS1242	R-4.2 Silver Sleeve, 5' pieces	50'
SS1442	R-4.2 Silver Sleeve, 5' pieces	50'
SS1642	R-4.2 Silver Sleeve, 5' pieces	50'
R-6.0	INSULATED SLEEVE	PER BOX
SS0460	R-6.0 Silver Sleeve, 5' pieces	75'
SS0560	R-6.0 Silver Sleeve, 5' pieces	75'
SS0660	R-6.0 Silver Sleeve, 5' pieces	75'
SS0760	R-6.0 Silver Sleeve, 5' pieces	75'
SS0860	R-6.0 Silver Sleeve, 5' pieces	75'
SS0960	R-6.0 Silver Sleeve, 5' pieces	75'
SS1060	R-6.0 Silver Sleeve, 5' pieces	50'
SS1260	R-6.0 Silver Sleeve, 5' pieces	50'
SS1460	R-6.0 Silver Sleeve, 5' pieces	50'
SS1660	R-6.0 Silver Sleeve, 5' pieces	50'
R-8.0	INSULATED SLEEVE	PER BOX
SS0480	R-8.0 Silver Sleeve, 5' pieces	75'
SS0580	R-8.0 Silver Sleeve, 5' pieces	75'
SS0680	R-8.0 Silver Sleeve, 5' pieces	75'
SS0780	R-8.0 Silver Sleeve, 5' pieces	75'
SS0880	R-8.0 Silver Sleeve, 5' pieces	75'
SS0980	R-8.0 Silver Sleeve, 5' pieces	75'
SS1080	R-8.0 Silver Sleeve, 5' pieces	50'
SS1280	R-8.0 Silver Sleeve, 5' pieces	50'
SS1480	R-8.0 Silver Sleeve, 5' pieces	50'
SS1680	R-8.0 Silver Sleeve, 5' pieces	50'

continued on next page

continued from previous page

QUIETFLEX® INSULATED SLEEVE	DESCRIPTION	STANDARD PACK QTY
R-4.2	INSULATED SLEEVE	PER BOX
BS0442	R-4.2 Black Sleeve, 5' pieces	75'
BS0542	R-4.2 Black Sleeve, 5' pieces	75'
BS0642	R-4.2 Black Sleeve, 5' pieces	75'
BS0742	R-4.2 Black Sleeve, 5' pieces	75'
BS0842	R-4.2 Black Sleeve, 5' pieces	75'
BS0942	R-4.2 Black Sleeve, 5' pieces	75'
BS1042	R-4.2 Black Sleeve, 5' pieces	50'
BS1242	R-4.2 Black Sleeve, 5' pieces	50'
BS1442	R-4.2 Black Sleeve, 5' pieces	50'
BS1642	R-4.2 Black Sleeve, 5' pieces	50'
R-6.0	INSULATED SLEEVE	PER BOX
BS0460	R-6.0 Black Sleeve, 5' pieces	75'
BS0560	R-6.0 Black Sleeve, 5' pieces	75'
BS0660	R-6.0 Black Sleeve, 5' pieces	75'
BS0760	R-6.0 Black Sleeve, 5' pieces	75'
BS0860	R-6.0 Black Sleeve, 5' pieces	75'
BS0960	R-6.0 Black Sleeve, 5' pieces	75'
BS1060	R-6.0 Black Sleeve, 5' pieces	50'
BS1260	R-6.0 Black Sleeve, 5' pieces	50'
R-8.0	INSULATED SLEEVE	PER BOX
BS0580	R-8.0 Black Sleeve, 5' pieces	75'
BS0680	R-8.0 Black Sleeve, 5' pieces	75'
BS0780	R-8.0 Black Sleeve, 5' pieces	75'
BS0880	R-8.0 Black Sleeve, 5' pieces	75'
BS0980	R-8.0 Black Sleeve, 5' pieces	75'
BS1080	R-8.0 Black Sleeve, 5' pieces	50'
BS1280	R-8.0 Black Sleeve, 5' pieces	50'
BS1480	R-8.0 Black Sleeve, 5' pieces	50'
BS1680	R-8.0 Black Sleeve, 5' pieces	50'

continued on next page

QUIETFLEX® MOBILE HOME-APPROVED

The Quietflex Mobile Home Flex Duct has an extra heavy-duty, UV-inhibited, polyethylene vapor barrier and complies with HUD standards for outdoor use with mobile homes. Standard diameters include 6", 8", 10", 12", 14", 16" and 18" with 25 feet per bag/box.

PRODUCT FEATURES

- Johns Manville Formaldehyde-Free™ fiber glass insulation
- Oversized core to fit on collars and register boxes
- Galvanized, reinforced core
- Weather-resistant packaging
- Available R-4.2, R-6.0, and R-8.0
- Easy-to-carry package: up to 10 sizes strapped together as pair
- Meets most federal, state, and local codes and standards



Quietflex® Mobile Home-Approved



QUIETFLEX® MOBILE HOME APPROVED	DESCRIPTION	STANDARD PACK PER BAG/BOX
R-4.2 51 Series	6", 8", 10", 18"	BAG
651	Mobile Home Black Jacket R-4.2	25'
851	Mobile Home Black Jacket R-4.2	25'
1051	Mobile Home Black Jacket R-4.2	25'
1251	Mobile Home Black Jacket R-4.2	25'
1451	Mobile Home Black Jacket R-4.2	25'
1651	Mobile Home Black Jacket R-4.2	25'
1851	Mobile Home Black Jacket R-4.2	25'
R-6.0 71 Series	10" - 18"	BAG
1071	Mobile Home Black Jacket R-6.0	25'
1271	Mobile Home Black Jacket R-6.0	25'
1471	Mobile Home Black Jacket R-6.0	25'
1671	Mobile Home Black Jacket R-6.0	25'
1871	Mobile Home Black Jacket R-6.0	25'

continued on next page

continued from previous page

QUIETFLEX® MOBILE HOME APPROVED	DESCRIPTION	STANDARD PACK PER BAG/BOX
R-4.2 51 Series	6", 8", 10", 18"	BAG
651	Mobile Home Black Jacket R-4.2	25'
851	Mobile Home Black Jacket R-4.2	25'
1051	Mobile Home Black Jacket R-4.2	25'
1251	Mobile Home Black Jacket R-4.2	25'
1451	Mobile Home Black Jacket R-4.2	25'
1651	Mobile Home Black Jacket R-4.2	25'
1851	Mobile Home Black Jacket R-4.2	25'
R-6.0 71 Series	10" - 18"	BAG
1071	Mobile Home Black Jacket R-6.0	25'
1271	Mobile Home Black Jacket R-6.0	25'
1471	Mobile Home Black Jacket R-6.0	25'
1671	Mobile Home Black Jacket R-6.0	25'
1871	Mobile Home Black Jacket R-6.0	25'
R-8.0 81 Series	10" - 18"	BAG
1081	Mobile Home Black Jacket R-8.0	25'
1281	Mobile Home Black Jacket R-8.0	25'
1481	Mobile Home Black Jacket R-8.0	25'
1681	Mobile Home Black Jacket R-8.0	25'
1881	Mobile Home Black Jacket R-8.0	25'

QUIETFLEX® “RIP-STOP” SILVER JACKET

The Quietflex Rip-Stop Silver Jacket Flex Duct has a metallic, polyester-vapor barrier with a special rip-stop scrim reinforcement. Standard diameters are available in 3" to 22", 12½', 25' or 50' per package.

PRODUCT FEATURES

- Johns Manville Formaldehyde-Free™ fiber glass insulation
- Available in R-4.2, R-6.0, and R-8.0
- Oversized core to fit on collars and register boxes
- Galvanized, reinforced core
- Weather-resistant packaging
- Available in boxes and bags
- Meets most federal, state, and local codes and standards
- ETL Listed/Approved to UL181 standard



Quietflex® “Rip-Stop” Silver Jacket



QUIETFLEX® “RIP-STOP” SILVER JACKET	DESCRIPTION	LENGTH PER BAG/BOX
R-4.2 40 Series	4" - 22"	BAG
440	Silver Jacket R-4.2	25'
540	Silver Jacket R-4.2	25'
640	Silver Jacket R-4.2	25'
740	Silver Jacket R-4.2	25'
840	Silver Jacket R-4.2	25'
940	Silver Jacket R-4.2	25'
1040	Silver Jacket R-4.2	25'
1240	Silver Jacket R-4.2	25'
1440	Silver Jacket R-4.2	25'
1640	Silver Jacket R-4.2	25'
1840	Silver Jacket R-4.2	25'
2040	Silver Jacket R-4.2	25'
2240	Silver Jacket R-4.2	25'

continued on next page

continued from previous page

QUIETFLEX® “RIP-STOP” SILVER JACKET	DESCRIPTION	LENGTH PER BAG/BOX
R-4.2 Serves 40-50	4" - 20"	PER BAG
440-50	Silver Jacket R-4.2	50'
540-50	Silver Jacket R-4.2	50'
640-50	Silver Jacket R-4.2	50'
740-50	Silver Jacket R-4.2	50'
840-50	Silver Jacket R-4.2	50'
940-50	Silver Jacket R-4.2	50'
1040-50	Silver Jacket R-4.2	50'
1240-50	Silver Jacket R-4.2	50'
1440-50	Silver Jacket R-4.2	50'
1640-50	Silver Jacket R-4.2	50'
1840-50	Silver Jacket R-4.2	50'
2040-50	Silver Jacket R-4.2	50'
R-4.2 30 Series	4" - 20"	PER BOX
430	Silver Jacket R-4.2	25'
530	Silver Jacket R-4.2	25'
630	Silver Jacket R-4.2	25'
730	Silver Jacket R-4.2	25'
830	Silver Jacket R-4.2	25'
930	Silver Jacket R-4.2	25'
1030	Silver Jacket R-4.2	25'
1230	Silver Jacket R-4.2	25'
1430	Silver Jacket R-4.2	25'
1630	Silver Jacket R-4.2	25'
1830	Silver Jacket R-4.2	25'
2030	Silver Jacket R-4.2	25'
R4.6 80 Series	4" - 22"	PER BAG
380	Silver Jacket R-6.0	25'
480	Silver Jacket R-6.0	25'
580	Silver Jacket R-6.0	25'
680	Silver Jacket R-6.0	25'
780	Silver Jacket R-6.0	25'
880	Silver Jacket R-6.0	25'

continued from previous page

QUIETFLEX® “RIP-STOP” SILVER JACKET	DESCRIPTION	LENGTH PER BAG/BOX
R4.6 80 Series	4" - 22"	PER BAG
980	Silver Jacket R-6.0	25'
1080	Silver Jacket R-6.0	25'
1280	Silver Jacket R-6.0	25'
1480	Silver Jacket R-6.0	25'
1680	Silver Jacket R-6.0	25'
1880	Silver Jacket R-6.0	25'
2080	Silver Jacket R-6.0	25'
2280	Silver Jacket R-6.0	25'
R-6.0 80-50 Series	4" - 20"	PER BAG
480-50	Silver Jacket R-6.0	50'
580-50	Silver Jacket R-6.0	50'
680-50	Silver Jacket R-6.0	50'
780-50	Silver Jacket R-6.0	50'
880-50	Silver Jacket R-6.0	50'
980-50	Silver Jacket R-6.0	50'
1080-50	Silver Jacket R-6.0	50'
1280-50	Silver Jacket R-6.0	50'
R-6.0 80-12.5 Series	4" - 20"	PER BAG
480-12.5	Silver Jacket R-6.0	12½'
580-12.5	Silver Jacket R-6.0	12½'
680-12.5	Silver Jacket R-6.0	12½'
780-12.5	Silver Jacket R-6.0	12½'
880-12.5	Silver Jacket R-6.0	12½'
980-12.5	Silver Jacket R-6.0	12½'
1080-12.5	Silver Jacket R-6.0	12½'
1280-12.5	Silver Jacket R-6.0	12½'
1480-12.5	Silver Jacket R-6.0	12½'
1680-12.5	Silver Jacket R-6.0	12½'
1880-12.5	Silver Jacket R-6.0	12½'
2080-12.5	Silver Jacket R-6.0	12½'

continued on next page

continued from previous page

QUIETFLEX® “RIP-STOP” SILVER JACKET	DESCRIPTION	LENGTH PER BAG/BOX
R-6.0 80-50 Series	4" - 20"	PER BAG
480-50	Silver Jacket R-6.0	50'
580-50	Silver Jacket R-6.0	50'
680-50	Silver Jacket R-6.0	50'
780-50	Silver Jacket R-6.0	50'
880-50	Silver Jacket R-6.0	50'
980-50	Silver Jacket R-6.0	50'
1080-50	Silver Jacket R-6.0	50'
1280-50	Silver Jacket R-6.0	50'
R-6.0 80-12.5 Series	4" - 20"	PER BAG
480-12.5	Silver Jacket R-6.0	12½'
580-12.5	Silver Jacket R-6.0	12½'
680-12.5	Silver Jacket R-6.0	12½'
780-12.5	Silver Jacket R-6.0	12½'
880-12.5	Silver Jacket R-6.0	12½'
980-12.5	Silver Jacket R-6.0	12½'
1080-12.5	Silver Jacket R-6.0	12½'
1280-12.5	Silver Jacket R-6.0	12½'
1480-12.5	Silver Jacket R-6.0	12½'
1680-12.5	Silver Jacket R-6.0	12½'
1880-12.5	Silver Jacket R-6.0	12½'
2080-12.5	Silver Jacket R-6.0	12½'
R-6.0 70 Series	4" - 20"	PER BOX
470	Silver Jacket R-6.0	25'
570	Silver Jacket R-6.0	25'
670	Silver Jacket R-6.0	25'
770	Silver Jacket R-6.0	25'
870	Silver Jacket R-6.0	25'
970	Silver Jacket R-6.0	25'
1070	Silver Jacket R-6.0	25'
1270	Silver Jacket R-6.0	25'
1470	Silver Jacket R-6.0	25'
1670	Silver Jacket R-6.0	25'

continued on next page

continued from previous page

QUIETFLEX® “RIP-STOP” SILVER JACKET	DESCRIPTION	LENGTH PER BAG/BOX
R-6.0 70 Series	4" - 20"	PER BOX
1870	Silver Jacket R-6.0	25'
2070	Silver Jacket R-6.0	25'
R-8.0 85 Series	4" - 20"	PER BAG
485	Silver Jacket R-8.0	25'
585	Silver Jacket R-8.0	25'
685	Silver Jacket R-8.0	25'
785	Silver Jacket R-8.0	25'
885	Silver Jacket R-8.0	25'
985	Silver Jacket R-8.0	25'
1085	Silver Jacket R-8.0	25'
1285	Silver Jacket R-8.0	25'
1485	Silver Jacket R-8.0	25'
1685	Silver Jacket R-8.0	25'
1885	Silver Jacket R-8.0	25'
2085	Silver Jacket R-8.0	25'
R-8.0 85-12.5 Series	4" - 20"	PER BAG
485-12.5	Silver Jacket R-8.0	12 ¹ / ₂ '
585-12.5	Silver Jacket R-8.0	12 ¹ / ₂ '
685-12.5	Silver Jacket R-8.0	12 ¹ / ₂ '
785-12.5	Silver Jacket R-8.0	12 ¹ / ₂ '
885-12.5	Silver Jacket R-8.0	12 ¹ / ₂ '
985-12.5	Silver Jacket R-8.0	12 ¹ / ₂ '
1085-12.5	Silver Jacket R-8.0	12 ¹ / ₂ '
1285-12.5	Silver Jacket R-8.0	12 ¹ / ₂ '
1485-12.5	Silver Jacket R-8.0	12 ¹ / ₂ '
1685-12.5	Silver Jacket R-8.0	12 ¹ / ₂ '
1885-12.5	Silver Jacket R-8.0	12 ¹ / ₂ '
2085-12.5	Silver Jacket R-8.0	12 ¹ / ₂ '
R-8.0 84 Series	4" - 20"	PER BOX
484	Silver Jacket R-8.0	25'
584	Silver Jacket R-8.0	25'

continued on next page

continued from previous page

QUIETFLEX® “RIP-STOP” SILVER JACKET	DESCRIPTION	LENGTH PER BAG/BOX
R-8.0 84 Series	4" - 20"	PER BOX
684	Silver Jacket R-8.0	25'
784	Silver Jacket R-8.0	25'
884	Silver Jacket R-8.0	25'
984	Silver Jacket R-8.0	25'
1084	Silver Jacket R-8.0	25'
1284	Silver Jacket R-8.0	25'
1484	Silver Jacket R-8.0	25'
1684	Silver Jacket R-8.0	25'
1884	Silver Jacket R-8.0	25'
2084	Silver Jacket R-8.0	25'

QUIETFLEX® UV-INHIBITED BLACK JACKET

The Quietflex UV-Inhibited Black Jacket Flex Duct has a UV-inhibited polyethylene vapor barrier. Standard diameters are available in 3" to 20", with 12½', 25' or 50' per package.

PRODUCT FEATURES

- Johns Manville Formaldehyde-Free™ fiber glass insulation
- Available in R-4.2, R-6.0, and R-8.0
- Oversized core to fit on collars and register boxes
- Galvanized, reinforced core
- Weather-resistant packaging
- Easy-to-carry package: up to 10 sizes strapped together as pair
- Available in boxes and bags
- Meets most federal, state, and local codes and standards



Quietflex® Duct UV-Inhibited Black Jacket



QUIETFLEX® UV-INHIBITED BLACK JACKET	DESCRIPTION	LENGTH PER BAG/BOX
R-4.2 20 Series	4" - 22"	PER BAG
420	Black Jacket R-4.2	25'
520	Black Jacket R-4.2	25'
620	Black Jacket R-4.2	25'
720	Black Jacket R-4.2	25'
820	Black Jacket R-4.2	25'
920	Black Jacket R-4.2	25'
1020	Black Jacket R-4.2	25'
1220	Black Jacket R-4.2	25'
1420	Black Jacket R-4.2	25'
1620	Black Jacket R-4.2	25'
1820	Black Jacket R-4.2	25'
2020	Black Jacket R-4.2	25'

continued on next page

continued from previous page

QUIETFLEX® UV-INHIBITED BLACK JACKET	DESCRIPTION	LENGTH PER BAG/BOX
R-4.2 20-50 Series	4" - 22"	PER BAG
420-50	Black Jacket R-4.2	50'
520-50	Black Jacket R-4.2	50'
620-50	Black Jacket R-4.2	50'
720-50	Black Jacket R-4.2	50'
820-50	Black Jacket R-4.2	50'
920-50	Black Jacket R-4.2	50'
1020-50	Black Jacket R-4.2	50'
1220-50	Black Jacket R-4.2	50'
1420-50	Black Jacket R-4.2	50'
1620-50	Black Jacket R-4.2	50'
1820-50	Black Jacket R-4.2	50'
2020-50	Black Jacket R-4.2	50'
R-4.2 10 Series	4" - 22"	PER BOX
410	Black Jacket R-4.2	25'
510	Black Jacket R-4.2	25'
610	Black Jacket R-4.2	25'
710	Black Jacket R-4.2	25'
810	Black Jacket R-4.2	25'
910	Black Jacket R-4.2	25'
1010	Black Jacket R-4.2	25'
1210	Black Jacket R-4.2	25'
1410	Black Jacket R-4.2	25'
1610	Black Jacket R-4.2	25'
1810	Black Jacket R-4.2	25'
2010	Black Jacket R-4.2	25'
R-6.0 60 Series	4" - 20"	PER BAG
460	Black Jacket R-6.0	25'
560	Black Jacket R-6.0	25'
660	Black Jacket R-6.0	25'
760	Black Jacket R-6.0	25'

continued on next page

continued from previous page

QUIETFLEX® UV-INHIBITED BLACK JACKET	DESCRIPTION	LENGTH PER BAG/BOX
860	Black Jacket R-6.0	25'
960	Black Jacket R-6.0	25'
1060	Black Jacket R-6.0	25'
1260	Black Jacket R-6.0	25'
1460	Black Jacket R-6.0	25'
1660	Black Jacket R-6.0	25'
1860	Black Jacket R-6.0	25'
2060	Black Jacket R-6.0	25'
R-6.0 60-50 Series	4" - 20"	PER BAG
460-50	Black Jacket R-6.0	50'
560-50	Black Jacket R-6.0	50'
660-50	Black Jacket R-6.0	50'
760-50	Black Jacket R-6.0	50'
860-50	Black Jacket R-6.0	50'
960-50	Black Jacket R-6.0	50'
1060-50	Black Jacket R-6.0	50'
1260-50	Black Jacket R-6.0	50'
R-6.0 50 Series	4" - 20"	PER BOX
450	Black Jacket R-6.0	25'
550	Black Jacket R-6.0	25'
650	Black Jacket R-6.0	25'
750	Black Jacket R-6.0	25'
850	Black Jacket R-6.0	25'
950	Black Jacket R-6.0	25'
1050	Black Jacket R-6.0	25'
1250	Black Jacket R-6.0	25'
1450	Black Jacket R-6.0	25'
1650	Black Jacket R-6.0	25'
1850	Black Jacket R-6.0	25'
2050	Black Jacket R-6.0	25'

continued on next page

continued from previous page

QUIETFLEX® UV-INHIBITED BLACK JACKET	DESCRIPTION	LENGTH PER BAG/BOX
R.8 65 Series	4" - 20"	PER BOX
465	Black Jacket R-8.0	25'
565	Black Jacket R-8.0	25'
665	Black Jacket R-8.0	25'
765	Black Jacket R-8.0	25'
865	Black Jacket R-8.0	25'
965	Black Jacket R-8.0	25'
1065	Black Jacket R-8.0	25'
1265	Black Jacket R-8.0	25'
1465	Black Jacket R-8.0	25'
1665	Black Jacket R-8.0	25'
1865	Black Jacket R-8.0	25'
2065	Black Jacket R-8.0	25'
R-8.0 54 Series	4" - 20"	PER BOX
454	Black Jacket R-8.0	25'
554	Black Jacket R-8.0	25'
654	Black Jacket R-8.0	25'
754	Black Jacket R-8.0	25'
854	Black Jacket R-8.0	25'
954	Black Jacket R-8.0	25'
1054	Black Jacket R-8.0	25'
1254	Black Jacket R-8.0	25'
1454	Black Jacket R-8.0	25'
1654	Black Jacket R-8.0	25'
1854	Black Jacket R-8.0	25'
2054	Black Jacket R-8.0	25'

QUIETFLEX® UNINSULATED AIR CONNECTOR

The Quietflex Metallic Uninsulated Air Connector comes in 25' pieces. Standard diameters available are 3" to 20". The 3" and 4" are shipped in a master carton containing 25' individually boxed pieces at 25' each (625'). The 5" through 20" come with four 25' connectors (100') per master carton.

PRODUCT FEATURES

- Oversized core to fit on collars and register boxes
- Galvanized metal core reinforcing
- Temperature range is 20°F to 200°F intermittent
- Installation Notes:
 - Not to be installed in lengths greater than 14 feet
 - Not to be used to vent appliances for cooling, heating and clothes drying unless approved and recommended by appliance manufacturer.



Quietflex® Uninsulated Air Connector

QUIETFLEX® UNINSULATED AIR CONNECTOR	DESCRIPTION	FEET PER BOX
306	Uninsulated Air Connector, 25' Per Piece	625'
406	Uninsulated Air Connector, 25' Per Piece	625'
506	Uninsulated Air Connector, 25' Per Piece	100'
606	Uninsulated Air Connector, 25' Per Piece	100'
706	Uninsulated Air Connector, 25' Per Piece	100'
806	Uninsulated Connector, 25' Per Piece	100'
906	Uninsulated Air Connector, 25' Per Piece	100'
1006	Uninsulated Air Connector, 25' Per Piece	100'
1206	Uninsulated Air Connector, 25' Per Piece	100'
1406	Uninsulated Air Connector, 25' Per Piece	100'
1606	Uninsulated Air Connector, 25' Per Piece	100'
1806	Uninsulated Air Connector, 25' Per Piece	100'

Quietflex® is a registered trademark of Quietflex Manufacturing Company, L.P.

INDEX

A

Accuporobe, See Refrigerant Tools & Accessories

Air Purifier(s)

- Amana® UVX - Air Purifier 51
- Goodman® UVX - Air Purifier 23

Amana® Products

- Amana® A1EAC - 1" Charged Media 39
- Amana® A13MU 35
- Amana® ABB - Builder's Media 31
- Amana® AGM - Grille Mount 43
- Amana® AHEPA/ADMHEPA 45
- Amana® AMU 33
- Amana® ARAM - Right-Angle 37
- Amana® ASAS 41
- Amana® Controls 61
- Amana® DMH900 47
- Amana® HRV/ERV 53
- Amana® HUM 55
- Amana® UVX - Air Purifier 51
- Amana® UVX – Object Purifier 49
- Unit Protective Covers 63

Aquaguard, See Float Switches

C

Capacitors, See Electrical Componets

Charging Hoses, See Refrigerant Tools & Accessories

Chimney Liner Kits 121

Compressor Saver(s), See Electrical Components

Condensate Pumps

- Compact Low Profile 73
- Industrial Models 74
- In-Pan Model 74
- Large Capacity 73
- Medium Capacity 73
- Safety Control Switches 74

Contactors, See electrical Components

Controls

- Amana® Controls 61
- Goodman® Controls 59

Copper Fittings 109

Copper Refrigeration Tubing 107

D

Disconnect Switches 97

Ducts, See quietflex®

Duct Straps 65

E

Electrical Componets

- 370V Dual Oval Capacitors 83
- 370V Dual Round Capacitors 83
- 370V Oval Capacitors 81
- 370V Round Capacitors 81
- 440V Dual Oval Capacitors 83
- 440V Dual Round Capacitors 83
- 440V Oval Capacitors 82
- 440V Round Capacitors 82
- Compressor Savers 85
- Contactors 84
- Relays 84
- Transformers 85

Equipment Pads 69

F

Fasson® Tapes & Adhesives 119

- Fasson Cloth Duct Tape 119
- Fasson Film Tape 119
- Fasson Foil 119

Fasteners 99

Filter Dryers

- Parker - Dryers, Txv & Sightglasses 75

Float Switches

- Aquaguard 93
- Safe-T-Switch 95

Fuses

- Littlefuse® Fuses 103

G

Gas Connection Lines 71

Goodman® Products

- Goodman® Controls 59
- Goodman® Dmh900 19
- Goodman® G1EAC - 1" Charged Media 11
- Goodman® G13MU 7
- Goodman® GBB - Builder's Media 3
- Goodman® GGM - Grille Mount 15
- Goodman® GHEPA/GDMHEPA 17
- Goodman® GMU 5
- Goodman® Gram - Right-Angle 9
- Goodman® GSAS 13
- Goodman® HRV/ERV 25
- Goodman® HUM 27
- Goodman® UVX - Air Purifier 23

Goodman® UVX - Object Purifier 21
Unit Protective Covers 63

Goodparts® Motors, *See* Motors

Grilles

Amana® AGM - Grille Mount 43
Baseboard Grille 123
Return Air Grille, Stamped 124
Stamped Filter Grille, Removable Face 125

I

Insulitube, *See* Pipe Insulation

K

K-Flex Tapes 115

L

Linesets 105

M

Manifolds & Guages 79

McDaniel Metal Products 67

Motors

Goodparts® Motors 87
Universal Blwr Motor 1075 Rmp 87
Universal Blwr Motor 1075 Rmp 88
Universal Blwr Motor Multi Horse Power 88
Universal Cond Motor 825 Rmp 87
Universal Cond Motor 1075 Rmp 87
Universal Cond Motor Multi Horse Power 87
Multi-Tap Replacement Motors 89
Replacement Motors 90
Testing & Install Accessories 90
Universal Condenser and Blower Motors 90
Universal High Efficiency Motors 89

O

Object Purifier

Amana® UVX – Object Purifier 49
Goodman® UVX - Object Purifier 21

P

PARKER - Dryers, TXV & Sightglasses 75

Pipe Insulation

Insultube 113

PVC Pipe

Thermoplastic Piping 117

Q

Quietflex®

Insulated Sleeve 131
Mobile Home Flex Duct 135
“Rip-Stop” Silver Jacket 137
Uninsulated Air Connector 147
UV-Inhibited Black Jacket 143

R

Refrigerant Tools & Accessories

Accuprobe Leak Detector 80
Charging Hoses 79
Manifolds & Guages 79
Refrigerant Recovery & Accessories 80
Specialty Tools 80
Vacuum Pumps & Accessories 80

Register(s)

1 way Adjustable Curved Blade Reg 127
1 way Stamped Ceil/Sidewall 127
1 way Stamped Curved Blade Reg 128
2 way Stamped Ceil/Sidewall 127
2 way Stamped Curved Blade Reg 128
3 way Stamped Ceil/Sidewall 127
3 way Stamped Curved Blade Reg 128
4 way Stamped Ceil/Sidewall 127
Baseboard Register Supply 129
Stamped Floor Register 129
Step Down Diffuser, 2 cone 129
Step Down Diffuser, 2 cone w/R6 Ins 129
Step Down Diffuser, 3 Cone 129
Step Down Diffuser, 3 Cone w/R6 Ins 129
T-Bar Supply 130
Vertical Bar Type Single Deflection Register 126

Relays, *See* Electrical Components

Rolled Copper

Copper Refrigeration Tubing 107

S

Screws & Fasteners 99

Sightglasses 77

Smoke Detectors

Accessories 91
Metal Sampling Tube 91
Smoke Detectors 91

Specialty Tools 80

Spray Adhesive 119

T

Tapes

Cork Tape 115

Fasson® Tapes, *See* Fasson® Tapes & Adhesives

Foam Tape 115

Thermoplastic piping 117

Thermostat Wire 101

Tie Straps 65

Transformers, *See* Electrical Components

TXV Valves 78

U

Unit Protective Covers 63

V

Vacuum Pumps & Accessories 80

W

Whips

Whip Non-Metallic Conn 97

Whips Metallic Conn 97

Goodman Manufacturing Company, L.P., reserves the right to discontinue, or change at any time, specifications or designs without notice or without incurring obligations.

© 2010 Goodman Manufacturing Company, L.P. All rights reserved.

Amana® is a registered trademark of Maytag Corporation and its related companies and is used under license to Goodman Company L.P.

Quietflex® is a registered trademark of Quietflex Manufacturing Company, L.P.



CONTACT INFORMATION