



COPPERHEAD INDUSTRIES, LLC

# TABLE OF CONTENTS:

<b>2</b>	<b>About Copperhead</b>
<b>3</b>	<b>Copperhead Difference &amp; Time Line</b>
<b>4</b>	<b>Copperhead Innovation</b>
	<b>Complete System</b>
<b>5</b>	<b>Complete Tracer Wire System</b>
	<b>Open Cut</b>
<b>7</b>	<b>Copperhead High Strength</b>
	<b>Open Cut</b>
<b>9</b>	<b>Copperhead SuperFlex</b>
	<b>Directional Drill</b>
<b>11</b>	<b>Copperhead SoloShot Extra High Strength</b>
	<b>Pipe Burst</b>
<b>13</b>	<b>Copperhead SoloShot Xtreme</b>
	<b>Test Stations</b>
<b>15</b>	<b>Copperhead SnakePit Test Stations</b>
	<b>Connectors</b>
<b>17</b>	<b>Copperhead SnakeBite Locking Connector</b>
	<b>Locator</b>
<b>19</b>	<b>Copperhead ViperMag Locator</b>
	<b>Equipment</b>
<b>21</b>	<b>Copperhead CopperCaddy</b>
	<b>Equipment</b>
<b>21</b>	<b>Copperhead SnakeCharmer</b>
	<b>Equipment</b>
<b>21</b>	<b>Copperhead Anode</b>
<b>23</b>	<b>Copperhead Product Table</b>

# ABOUT COPPERHEAD

**In 2004, Copperhead Industries introduced copper-clad steel tracer wire to the world.**

## **Copperhead continues to bring new products to the Underground Construction Industry**

Copperhead tracer wire was a breakthrough idea fired by the imaginations of people who had been in the gas industry for 35 years. As strategic sourcing partners for gas distribution companies and their contractors, we saw a need for better products to locate underground utilities. Solid copper had been used as tracer wire for decades. We felt controlled by the volatility of the copper wire market and decided to do something about it.

We took our idea to one of the oldest metal-cladding companies in the U.S. With nearly 100 years of cladding experience, they helped us provide the industry with an intelligent alternative to solid copper. Copper-clad steel (CCS) is a bimetallic product manufactured through a metallurgical bond that combines the mechanical strength of steel with the conductivity and corrosion resistance of copper. Once combined, the two metals are inseparable. CCS has little to no scrap value and deters theft.

The solution was perfect! Strong, but conductive. Corrosion resistant. And a lot less likely to break when you put it through the rigors of underground construction. Suddenly, the volatility of the price of copper was minimized and its attractiveness to copper thieves was diminished. Copperhead's innovation brought the underground construction industry a superior performing product at a more economical price.

**Copperhead Industries set the standard for copper-clad steel tracer wire. Our competitors have been trying to catch up with us ever since.**





# THE COPPERHEAD DIFFERENCE!

## THE ALTERNATIVE TO SOLID COPPER TRACER WIRE

Other companies sell tracer wire. Some of it is copper-clad steel. But not all copper-clad steel is created equal, so don't be fooled by inferior alternatives. Copperhead products are manufactured in the United States and designed with American ingenuity. Our best-in-class customer service department represents Copperhead products with integrity. Our products are built better and they're built to last! In fact, we just made them even better. Copperhead's improved reinforced tracer wire represents an engineering breakthrough for the underground construction industry. It offers superior performance, strength and reliability. Without changing the physical characteristics of original Copperhead we now offer products that are stronger, more durable, and even more reliable.

**When you specify Copperhead tracer wire, expect value and reliability. It's no wonder we're the preferred choice of engineers, municipalities and utility companies.**

**2004**

Copperhead introduces copper-clad steel tracer wire to the underground construction industry.

**4/04** – Official 'launch' of the Copperhead brand.

**10/04** – Copperhead's original High Strength Reinforced Tracer Wire debuts on the market.

**2005**

Copperhead applies for an application patent for the use of copper-clad steel in directional drilling applications.

**2006**

**1/06** – Patent granted for the use of copper-clad steel for directional drilling applications.

**2/06** – Copperhead trademarks and introduces SnakePit magnetized test stations.

**2008**

**2/08** – Copperhead introduces Snake Charmer and CopperCaddy wire handling equipment

**9/08** – Copperhead introduces SuperFlex Tracer Wire.

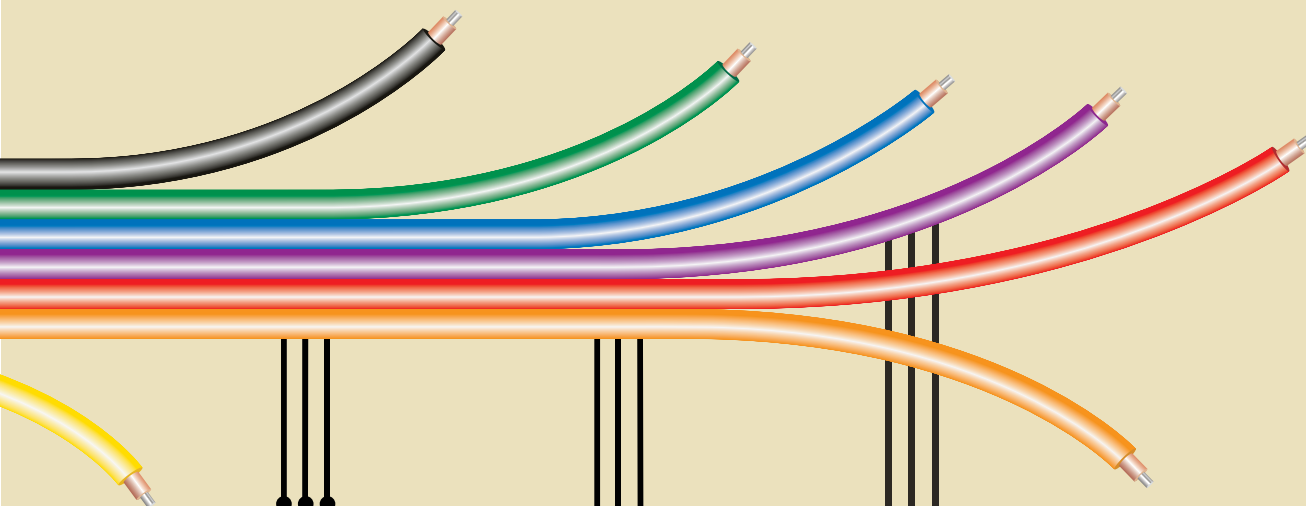




## Dedicated to the Underground Construction Industry.

Tracer wire is not just another product to us. Copperhead Industries believes that utilities and contractors should have complete confidence in the products they use to locate underground infrastructure. We strive to deliver a product that's strong and reliable, is corrosion-resistant, cost-effective and delivers superior performance.

**Our products work! It's just that simple.** From open ditch, to directional drilling, to pipe bursting, Copperhead offers a product that can be specified. Copperhead brought copper-clad steel tracer wire to you in 2004 and continues to serve utilities and contractors by providing reliable products to easily locate underground utilities.



**2009**

**Introduction of SnakeBite locking connectors.**

**3/09** – Copperhead becomes the first company to begin offering a Complete Tracer Wire System.

**5/09** – Copperhead incorporates grounding anodes as part of the Complete Tracer Wire System.

**2010**

**Created engineering drawings for the Complete Tracer Wire System.**

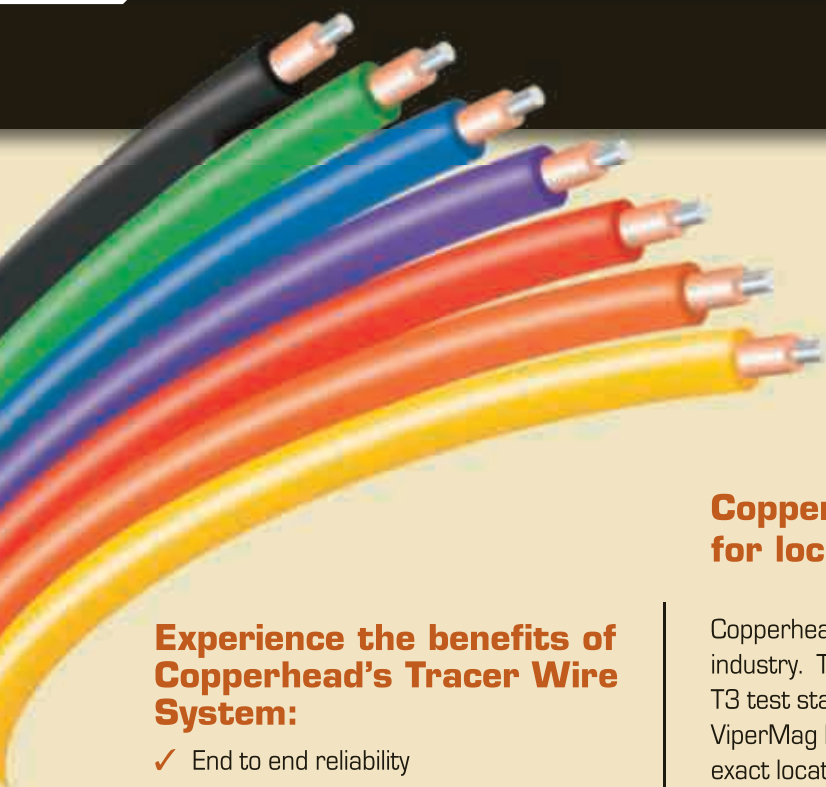
**2013**

**Copperhead introduces new products; SoloShot Xtreme, Improved HS and SF, ViperMag Locator, Cobra T-3.**





## ONLY COPPERHEAD OFFERS A COMPLETE TRACER WIRE SYSTEM



### Experience the benefits of Copperhead's Tracer Wire System:

- ✓ End to end reliability
- ✓ Our "complete system" improves the locate signal
- ✓ Locate your utility with pin-point accuracy
- ✓ More durable, longer lasting performance
- ✓ More stable, longer term pricing
- ✓ Direct connection point makes it easy to connect to your tracer wire

### Copperhead Industries - the intelligent choice for locating underground utilities

Copperhead Industries offers the only complete tracer wire system in the industry. The system includes Copperhead tracer wire, SnakePit and Cobra T3 test stations, grounding anodes, SnakeBite locking connectors, and the ViperMag locator. You get end-to-end reliability which helps you pinpoint the exact location of the underground utility.

### The Complete System Includes:

- ✓ Copperhead Tracer Wire
- ✓ SnakePit Test Stations
- ✓ Grounding Anodes
- ✓ SnakeBite Locking Connectors
- ✓ ViperMag Locator

**Copperhead's Complete Tracer Wire System  
and its accessories deliver EVERY TIME!**



# COMPLETE TRACER WIRE SYSTEM



COMPLETE SYSTEM

6

## Tracer Wire

Pioneered by Copperhead Industries, copper-clad steel reinforced tracer wire provides you with an intelligent choice for locating buried plastic pipes and fiber optic lines. We offer High Strength tracer wire for open cut applications, SoloShot Extra High-Strength tracer wire for directional drilling, SoloShot Xtreme tracer wire engineered specifically for pipe bursting, and SuperFlex tracer wire as an intelligent alternative to solid copper. Whatever the application, Copperhead has the right product for your job.

**High Strength Tracer Wire:** A premium product for open cut, Copperhead's industry-exclusive CCS reinforced tracer wire combines the strength of fully annealed high carbon steel with the conductivity and corrosion resistance of solid copper. The result: a more cost effective, stronger conductor with superior performance.

**SoloShot Tracer Wire:** We have several high carbon CCS products in the SoloShot line offering break load strengths from 1150-4700 lbs. Copperhead's SoloShot tracer wire products are specifically engineered for horizontal directional drilling and pipe bursting.

**SuperFlex Tracer Wire:** For light duty open cut applications, Copperhead's SuperFlex tracer wire features a fully annealed low carbon steel. SuperFlex offers all the field-proven advantages of original Copperhead reinforced tracer wire with the added advantage of flexibility making it the ultimate alternative to solid copper wire!

## SnakePit Test Station

Copperhead's SnakePit test station makes locating your underground utility easy! The SnakePit offers an insulated direct connection point for your locate transmitter that attaches easily to tracer wire. Our exclusive encapsulated magnet system makes finding the access point simple. Anti-corrosion technology and a locking cover will give you peace of mind. Secure it, cover it, and don't worry about it.

## Grounding Anodes

Installing anodes at all dead ends of the tracer wire system improves the locate signal. Grounding a tracer wire system completes the circuit for accurate locates and allows you to mark the pipe location with pinpoint accuracy. The Copperhead grounding anode enhances the locate transmission and improves the signal for the locator.

## SnakeBite Locking Connector

Connecting tracer wire is easy with Copperhead SnakeBite connectors. SnakeBite's exclusive 90-degree Twist Lock design means you simply insert the wires, twist 90 degrees and the SnakeBite connector is locked. Done! It's that simple! No need to strip the wires! Using SnakeBite connectors reduces installation time and lowers your overall labor costs.

## Locator

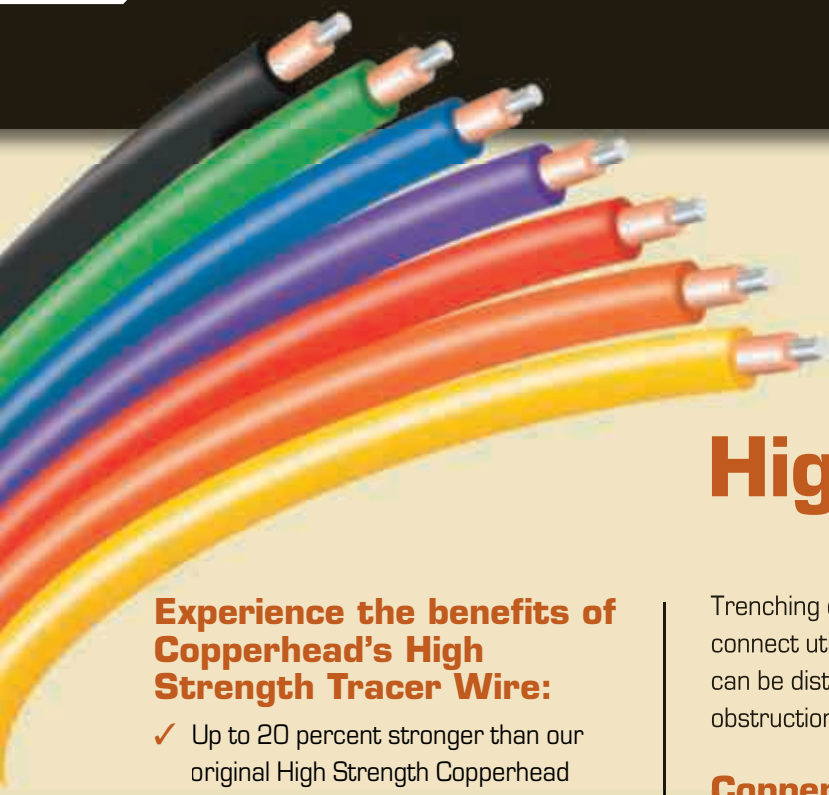
The ViperMag is a general-purpose locator designed to help locate Copperhead's Complete Tracer Wire System and other metallic utilities. Featuring multiple frequencies, push button depth, and ferrous metal detection. ALL IN ONE DEVICE!







## INCREASED BREAKLOAD! EVEN MORE RELIABLE



### Experience the benefits of Copperhead's High Strength Tracer Wire:

- ✓ Up to 20 percent stronger than our original High Strength Copperhead tracer wire
- ✓ Equally as flexible as our original High Strength tracer wire
- ✓ Reliable! Combines the strength of fully annealed high-carbon steel and the conductivity and corrosion resistance of solid copper
- ✓ 11 percent lighter than solid copper – reduced freight expenses
- ✓ Provided exclusively by Copperhead Industries

## High Strength

Trenching or plowing, commonly called open cut, is a common way to connect utilities. Open cut is used when the ground above the utilities can be disturbed and there are no buildings, roadways or other obstructions in the way.

### Copperhead's premium product for open cut applications, and most popular, is our High Strength Reinforced Tracer Wire

Unmatched by other copper-clad steel manufacturers, Copperhead's High Strength reinforced tracer wire combines the strength of fully annealed high-carbon steel with the conductivity and corrosion resistance of solid copper. The result is an industry exclusive in strength and reliability. So what's new? We just made it better! Copperhead's improved High Strength reinforced tracer wire is an engineering breakthrough for the underground construction industry. Without changing the physical characteristics of the wire, we have increased the break load and made it even more reliable.





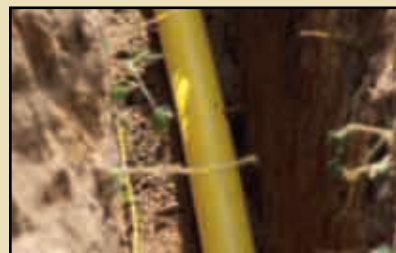
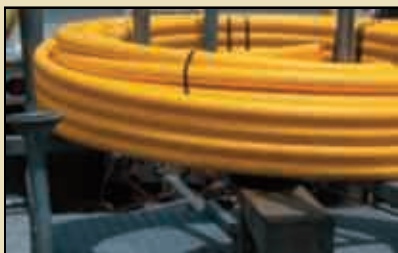
# COPPERHEAD HIGH STRENGTH



OPEN CUT

8

**Copperhead's improved High Strength reinforced tracer wire represents a revolutionary breakthrough for the utility industry and offers substantial savings in material, shipping and labor.**



## Copperhead High Strength Tracer Wire

Product Name	Part Number	Application	Wire Gauge	Spool Size	Break Load	Coating Thickness
High Strength 1830	1830*-HS-**	Open Cut	18 awg	500, 1000, 2500	107 lb.	30 mil
High Strength 1630	1630*-HS-**	Open Cut	16 awg	500, 1000, 2500	144 lb.	30 mil
High Strength 1430	1430*-HS-**	Open Cut	14 awg	500, 1000, 2500	282 lb.	30 mil
High Strength 1230	1230*-HS-**	Open Cut	12 awg	500, 1000, 2500	452 lb.	30 mil
High Strength 1030	1030*-HS-**	Open Cut	10 awg	500, 1000, 2500	684 lb.	30 mil

Available with 45 mil jacketing

\*Denotes Color: B=Blue, G=Green, P=Purple, N=Orange, R=Red, W=White, Y=Yellow, K=Black

\*\*Denotes Spool Length: 500', 1000', 2500'





OPEN CUT

9



# AS FLEXIBLE AS SOLID COPPER!

## OUTPERFORMS CONVENTIONAL COPPER TRACER WIRE



## SuperFlex

### Experience the benefits of Copperhead's SuperFlex Tracer Wire:

- ✓ Flexible – like working with solid copper
- ✓ Stronger – superior impact and breaking strength compared to solid copper
- ✓ Economical – saves you money
- ✓ Easy to install – reduces labor costs
- ✓ 11 percent lighter than solid copper – reduced freight expenses
- ✓ Inner core allows wire to stretch to accommodate ground movement
- ✓ Durable – HDPE coating offers superior underground protection

Also engineered for open cut applications, SuperFlex is the intelligent alternative to solid copper

### Improved SuperFlex Tracer Wire

Our improved SuperFlex tracer wire offers all the field-proven advantages of our original SuperFlex product. Designed specifically for open cut applications, SuperFlex acts and feels like solid copper, yet offers superior strength and durability. In fact, SuperFlex is 70 percent stronger than solid copper and is stronger than most tracer wire offered by other copper-clad steel providers.





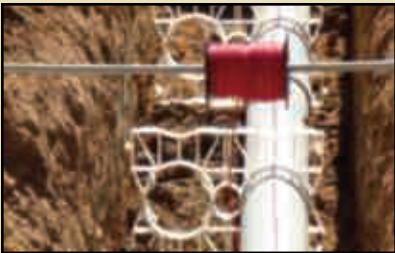
# COPPERHEAD SUPERFLEX



OPEN CUT

10

**Copperhead SuperFlex gives you all of the field-proven advantages of original Copperhead Reinforced Tracer Wire with the added advantage of flexibility making it the ultimate alternative to solid copper wire!**



## Copperhead SuperFlex Tracer Wire

Product Name	Part Number	Application	Wire Gauge	Spool Size	Break Load	Coating Thickness
SuperFlex 1830	1830*-SF-**	Open Cut	18 awg	500, 1000, 2500	75 lb.	30 mil
SuperFlex 1630	1630*-SF-**	Open Cut	16 awg	500, 1000, 2500	115 lb.	30 mil
SuperFlex 1430	1430*-SF-**	Open Cut	14 awg	500, 1000, 2500	194 lb.	30 mil
SuperFlex 1230	1230*-SF-**	Open Cut	12 awg	500, 1000, 2500	302 lb.	30 mil
SuperFlex 1030	1030*-SF-**	Open Cut	10 awg	500, 1000, 2500	513 lb.	30 mil

\*Denotes Color: B=Blue, G=Green, P=Purple, N=Orange, R=Red, W=White, Y=Yellow, K=Black

\*\*Denotes Spool Length: 500', 1000', 2500'





# PULLS THROUGH THE FIRST TIME!

## ENGINEERED SPECIFICALLY FOR DIRECTIONAL DRILLING



### Experience the benefits of SoloShot Extra High Strength Tracer Wire:

- ✓ Has six times the breaking strength of solid copper
- ✓ Eliminates costly re-bores
- ✓ Fewer re-bores means reduced material and time costs
- ✓ Weighs less, which means reduced shipping costs
- ✓ Copperhead tracer wire has virtually no scrap value, reducing the threat of jobsite theft
- ✓ 2006 Patent granted to Copperhead for the use of SoloShot EHS for Directional Drill applications

## Extra High Strength

Directional drilling is ideal for bores that need to go under roads, sidewalks, buildings, or existing land that cannot be disturbed. This allows utilities to be connected from one side of the obstruction to the other without disturbing or destroying what lies above.

### SoloShot Extra High Strength Tracer Wire is manufactured with drillers in mind

Engineered specifically to handle the rigors of directional drilling! Copperhead's SoloShot Extra High Strength (EHS) reinforced tracer wire has six times the breaking strength of solid copper in directional drill applications. SoloShot Extra High Strength outperforms conventional copper wire in both performance and cost. SoloShot Extra High Strength represents another breakthrough in the trenchless industry. Don't tolerate the hassle and cost associated with running multiple wires and costly re-bores due to broken tracer wire. For critical bores use SoloShot Xtreme with a breaking strength of 4,700 lbs.





# COPPERHEAD SOLOSHOT



**DIRECTIONAL DRILL**

12

**Switch to SoloShot EHS (Extra High Strength) and minimize costly re-bores due to tracer wire failure.**



## Copperhead SoloShot Directional Drill Tracer Wire

Product Name	Part Number	Application	Wire Gauge	Spool Size	Break Load	Coating Thickness
SoloShot EHS	1245*-EHS-**	Horizontal Directional Drill	12 awg	500, 1000, 2500	1150 lb.	45 mil
SoloShot EHS	1045*-EHS-**	Horizontal Directional Drill	10 awg	500, 1000, 2500	2032 lb.	45 mil
SoloShot EHS	845*-EHS-**	Horizontal Directional Drill	8 awg	500, 1000, 2500	2785 lb.	45 mil
SoloShot Xtreme	PBX-50-**	Critical Bores	.2043" 7 x 7 stranded CCS	Custom min qty 500' qty discount at 5,000' +	4700 lb.	50 mil

\*Denotes Color: B=Blue, G=Green, P=Purple, N=Orange, R=Red, W=White, Y=Yellow, K=Black

\*\*Denotes Spool Length: 500', 1000', 2500'





# TOUGHEST AND MOST DURABLE!

## ENGINEERED SPECIFICALLY FOR PIPE BURSTING



### Experience the benefits of SoloShot Xtreme Tracer Wire:

- ✓ Eliminate broken tracer wire and costly re-bores
- ✓ Features a 50-mil coating of tough, durable high density polyethylene (HDPE) insulation
- ✓ With 4,700 lbs. of breaking strength, SoloShot Xtreme is 1,000 lbs. stronger than 3/16 stranded stainless steel but equally flexible
- ✓ At 21 percent conductivity, SoloShot Xtreme is significantly more conductive than stainless steel, providing a better signal for a more accurate locate

## Xtreme Strength

Pipe bursting is a trenchless method of replacing buried pipelines or to expand a pipeline's carrying capacity by replacing smaller pipes with larger ones. By utilizing this method, these jobs can be completed without the need for a traditional construction trench. Launching and receiving pits replace the trench needed for conventional pipe-laying.

### **New SoloShot Xtreme: Engineered specifically for pipe bursting, Xtreme is the toughest, most durable tracer wire, EVER!**

SoloShot Xtreme is reinforced tracer wire engineered specifically to withstand the volatile environment of pipe bursting and critical bores. With a breaking strength of 4,700 lbs., this stranded copper-clad steel tracer wire is nearly 30 percent stronger than 3/16 stranded stainless steel and equally as flexible. SoloShot Xtreme provides you with the strongest, most reliable tracer wire available. It combines the strength of high carbon steel with the conductivity and corrosion resistance of copper for a more accurate locate. SoloShot Xtreme has such a high breaking strength, only one wire is needed for bursting and critical boring applications.



# COPPERHEAD SOLOSHOT XTREME



PIPE BURST

14

**SoloShot Xtreme has such a high breaking strength, only one wire is needed for bursting and critical boring applications.**



## Copperhead SoloShot Pipe Bursting Tracer Wire

Product Name	Part Number	Application	Wire Gauge	Spool Size	Break Load	Coating Thickness
SoloShot Xtreme	PBX-50-**	Pipe Burst	.2043" 7 x 7 stranded CCS	Custom min qty 500' qty discount at 5,000' +	4700 lb.	50 mil
SoloShot Burst	3/16*-PB-**	Pipe Burst	3/16" stainless steel	Custom min qty 500'	3700 lb.	45 mil

\*Denotes Color: B=Blue, G=Green, P=Purple, N=Orange, R=Red, W=White, Y=Yellow, K=Black

\*\*Denotes Spool Length: 500', 1000', 2500'





# SnakePit TEST STATIONS!

## MAKES LOCATING YOUR UNDERGROUND UTILITY EASY

### SnakePit Test Station

Copperhead's SnakePit makes locating your underground utility easy! The SnakePit offers an insulated direct connection point for your locate transmitter that attaches easily to your tracer wire. Our exclusive encapsulated magnet system makes finding the access point simple. Anti-corrosion technology and a locking cover will give you peace of mind. Secure it, cover it, and don't worry about it. SnakePit's cast iron covers are color-coded according to the American Public Works Association (APWA) standards. What does this mean for you? Instant recognition of the underground utility you are tracing.

The **Lite Duty** and **Lite Duty Adjustable** are designed for yards and ditches.

Our **Lite Duty XL** features Posi-Lock pull out restraint & anti-sink flange adaptor where shifting soil may be an issue.

**Concrete/Driveway Boxes** have a 6" flange perfect for driveway applications.

**Roadway Boxes** are the strongest of all SnakePits and can take the constant pounding of heavy traffic.

### Cobra T3 Test Station

The Cobra T3 provides convenient above ground access to connect your locating equipment while protecting your tracer wire. The Cobra T3 can handle up to three terminals plus optional shorting jumpers to give complete flexibility for many field configurations.

### Configuration examples:

- ✓ 1 terminal - Single wire connection, easy access connection for a locator.
- ✓ 2 terminals with a jumper - Single wire connection plus an anode connection offers an excellent locate signal with the jumper connected. With the jumper connected, the anode protects the wire and provides an excellent locate signal from other locations.
- ✓ 3 terminals with jumpers - Two wire connections plus an anode offer an excellent locate signal in two directions with the jumpers disconnected. With the jumpers connected, you'll have great protection for the wires and an excellent locate signal from other locations.

### The Cobra T3 offers the following features:

- ✓ Made of polypropylene material - maintenance-free, long life, durable
- ✓ 1" NPT or 3/4" NPT threads
- ✓ All hardware including jumpers are stainless steel - standard
- ✓ APWA color coded for easy identification of underground utilities
- ✓ Easily installed in any application - Wall Mount, 24" Rigid PVC, or 24" Flexible PVC conduit to protect the wires





# COPPERHEAD TEST STATIONS

**SnakePit  
Test Station**

**Cobra T3  
Test Station**



**TEST STATIONS**

16

**SnakePit's exclusive Encapsulated Magnet System makes locating your access boxes easier by magnifying the ferromagnetic signal!**

<b>Copperhead SnakePit and Cobra Test Stations</b>					
<b>Product Name</b>	<b>Part Number</b>	<b>Application</b>	<b>Description</b>	<b>Case Quantity</b>	<b>Color</b>
Lite Duty	LD14*TP	Non-roadway applications	Light duty box, 14" length	20	YEL, BLU, GRN, PUR, ORN, RED, BLK
Lite Duty - Adjustable	LD14*TP-ADJ	Non-roadway applications	Light duty adjustable, 18 5/8" - 24"	20	YEL, BLU, GRN, PUR, ORN, RED, BLK
Lite Duty -XL	LDXL36*TP	Non-roadway applications	Light duty box, 36" length	10	YEL, BLU, GRN, PUR, ORN, RED, BLK
Concrete/Driveway	CD14*TP	Low traffic drives and driveways	Concrete/driveway box, 14" length	10	YEL, BLU, GRN, PUR, ORN, RED, BLK
Roadway	RB14*TP	High traffic roadways	Roadway box, 14" length	5	YEL, BLU, GRN, PUR, ORN, RED, BLK
Cobra T3	T1-*01	Above grade	One terminal; 1" conduit	5	YEL, BLU, GRN, PUR, ORN, RED, BLK
Cobra T3	T1-*75	Above grade	One terminal; 3/4" conduit	5	YEL, BLU, GRN, PUR, ORN, RED, BLK
Cobra T3	T2-*01	Above grade	Two terminals with jumper; 1" conduit	5	YEL, BLU, GRN, PUR, ORN, RED, BLK
Cobra T3	T2-*75	Above grade	Two terminals with jumper; 3/4" conduit	5	YEL, BLU, GRN, PUR, ORN, RED, BLK
Cobra T3	T3-*01	Above grade	Three terminals with jumper; 1" conduit	5	YEL, BLU, GRN, PUR, ORN, RED, BLK
Cobra T3	T3-*75	Above grade	Three terminals with jumper; 3/4" conduit	5	YEL, BLU, GRN, PUR, ORN, RED, BLK

\*Denotes Color: B=Blue, G=Green, P=Purple, N=Orange, R=Red, W=White, Y=Yellow, K=Black





# EASY TO USE, REDUCES TIME & LABOR! IMPROVE YOUR LOCATE SIGNAL

## SnakeBite Locking Connector



Connecting tracer wire is easy with Copperhead SnakeBite connectors. SnakeBite's exclusive 90-degree Twist Lock design means you simply insert the wires, twist 90 degrees and the SnakeBite connector is locked. Done! It's that simple! No need to strip the wires! Using SnakeBite connectors reduces installation time and lowers your overall labor costs.

## All of Copperhead's connectors are waterproof and corrosion proof and are specifically designed for use with tracer wire.



The **DryConn 3-way Direct Bury Lug** eliminates the need to cut the main line and installs in less than a minute. This connector is pre-filled with dielectric silicone sealant that never hardens making it waterproof and corrosion proof. The improved outer lid locks down in three places keeping your connection free from contaminants and the user friendly design prevents cuts and handling discomfort.



We also offer the **DryConn Direct Bury Twist-on** with or without strain relief which both offer the same water proof and corrosion proof benefits as the Direct Bury Lug by being pre-filled with dielectric silicone sealant. Both Twist-on connectors are one piece for easy installation and work perfectly for splicing lines.

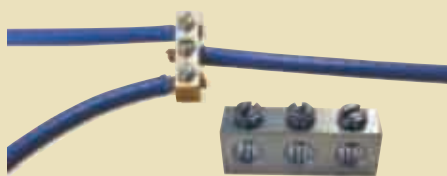
# COPPERHEAD CONNECTORS



CONNECTORS

18

## SnakeBite Pipe Burst Connector



Copperhead's SnakeBite Pipe Burst Connector is a tin plated copper alloy made from 3/8" x 1/2" material with 1/4-20 slotted stainless steel set screws with oval points standard. We offer a three-hole connector for hooking up service and a two-hole connector for splice only. Wax tape is included with all pipe burst connector packages to eliminate moisture and prevent corrosion

## Copperhead Connectors

Product Name	Part Number	Application	Description	Package Quantity	Color
Locking Connector	LSC1030*	Main splice and/or service line	Twist lock connector	Jar qty of 10, 25 or Bulk box of 100	BLU, YEL, ORN
Locking Connector	LSC1230*	Main splice and/or service line	Twist lock connector	Jar qty of 10, 25 or Bulk box of 100	BLU, YEL, ORN
Locking Connector	LSC1430*	Main splice and/or service line	Twist lock connector	Jar qty of 10, 25 or Bulk box of 100	BLU, YEL, ORN
Single Connector - Regular	SCB-01	Main splice or dead end	Direct bury water proof	Pkg qty 20 or Bulk box of 100	BLU
Single Connector - Large	SCB-01-LG	Main splice or termination	Direct bury water proof - large	Pkg qty 8	BLU
Single Connector - Strain Relief	SCB-01-SR	Main splice	Direct bury twist on with strain relief	Pkg qty 20 or Bulk box of 100	BLU
Three-way Lug Connector	3WB-01	Main splice to service line	3-way direct bury water proof	Pkg qty 10	BLU
Pipe Burst Connector	SC-PB-01	Main splice	Set screw type	Pkg qty 1	
Pipe Burst Connector	SC-2WPB-01	Main splice	Set screw type	Pkg qty 18	
Pipe Burst Connector	SC-3WPB-01	Main splice and/or service line	Set screw type	Pkg qty 18	

\*Denotes Color





# THE NEW VIPERMAG LOCATOR!

## 4 UNIQUE FEATURES IN ONE DEVICE

**The NEW ViperMag is a general-purpose locator designed to help locate Copperhead's Complete Tracer Wire System and other metallic utilities.**

### Locator

The Copperhead ViperMag pipe and cable locator is a general purpose locator used to detect buried pipe and cable services in a variety of situations. The ViperMag has achieved a compact and lightweight design without compromising strength and performance to meet the requirements of those wishing to detect the presence of active power cables, metal locating, and tracing all types of pipes and cables. The ViperMag transmitter can supply a very useful 1 watt signal power. Signal application can be either direct connection or induction if there is no access point. With the addition of the optional signal clamp the ViperMag transmitter can be applied to the target line no matter what the situation.

### Features

- Passive Power Locating - 60Hz
- Active Frequencies - 512Hz, 8kHz, 83kHz
- Ferrous Metal Locating
- Push Button Depth

### Standard Equipment

Receiver, Transmitter, Direct Connection Cables, Ground Rod, Alkaline Batteries, Soft Sided Case, User Guide

### Optional Accessories

#### Clamps

2" and 4" Clamps – used to apply the transmitter signal to a target cable when safe access to the conductor is not possible.

#### Hard Case

Our hard case features a rugged exterior and custom cut high density foam inserts to give your ViperMag ultimate protection. The interior is oversized providing plenty of room for your receiver, transmitter, direct connection cables, ground rod, and other accessories.





# COPPERHEAD LOCATOR



LOCATOR

20

The ViperMag is an affordable, easy-to-use locator including four unique features in one device.



## Copperhead ViperMag

Product Name	Part Number	Application	Transmitter Features	Receiver Features
Viper Mag	VIP-MAG	Pipe and cable locator, metal locator	1 watt output power High and low output settings Induction & Direct connection modes - (automatically selected) Low battery warning Good connection indication IP54 rating Long life battery pack (4 x D cells - approx. 60 hrs) Hook for hanging transmitter	Passive power 60Hz & Ferrous Metal 3 active frequencies 512Hz, 8kHz, 83kHz Twin antenna peak response High contrast responsive display IP54 rating Simple four button control pad One touch gain control One touch depth measurement Carbon fiber antenna tube Audio and visual indication 2 x AA battery power for approx. 20 hrs Continuous battery monitoring
Viper Clamp	VIP-CL2 VIP-CL4	Apply transmitter signal to target cable when safe access to the conductor is not possible	Diameter 2 inches Diameter 4 inches	
Hard Case	VIP-Case	Ultimate protection for your locator		



# MAKE YOUR JOB EASIER WITH WIRE HANDLING EQUIPMENT FROM COPPERHEAD

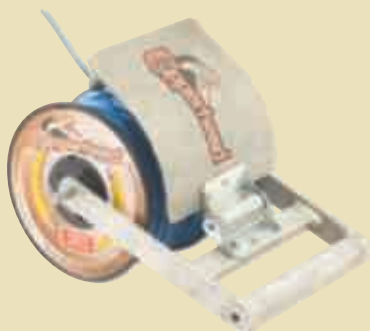
## CopperCaddy



### Transport and dispense wire with ease!

- ✓ Spring torque tension control to prevent wire whip
- ✓ Heavy duty pneumatic tires for ease of movement
- ✓ Up to 23" diameter spool
- ✓ 300 # weight capacity

## SnakeCharmer



### Easily control wire payoff!

- ✓ Spring torque tension control to prevent wire whip
- ✓ Heavy duty all aluminum welded construction
- ✓ Designed for smaller spools

## Grounding Anodes



### Installing anodes at all dead ends of the tracer wire system improves the locate signal.

Grounding a tracer wire system completes the circuit for accurate locates and allows you to mark the pipe location with pinpoint accuracy. The Copperhead grounding anode enhances the locate transmission and improves the signal for the locator.

# COPPERHEAD WIRE HANDLING



EQUIPMENT

22

**Copperhead wire handling equipment makes your projects easier and saves time and money.**



## Wire Handling Equipment

Product Name	Part Number	Application	Description	Features
CopperCaddy	CC-2008	Transport and dispense wire	Minimum arbor 1 3/8" Up to 23" diameter spool Up to 300lb capacity	Heavy duty pneumatic tires Spring torque tension control
Snake Charmer	SC-625	Transport and dispense wire	Fit spools with traverse of 6" - 7"	Spring torque tension control
Snake Charmer	SC-725	Transport and dispense wire	Fit spools with traverse of 8.5" - 10"	Heavy duty aluminum welded construction

## Copperhead Anode

Product Name	Part Number	Application	Description
Magnesium Anode	ANO-1005	All dead ends that are not brought to the surface	Used to complete the electrical circuit





## Copperhead Tracer Wire and Equipment

### Open Cut

#### Copperhead SuperFlex Tracer Wire

Product Name	Part Number	Application
SuperFlex 1830	1830*-SF-**	Open Cut
SuperFlex 1630	1630*-SF-**	Open Cut
SuperFlex 1430	1430*-SF-**	Open Cut
SuperFlex 1230	1230*-SF-**	Open Cut
SuperFlex 1030	1030*-SF-**	Open Cut

### Open Cut

#### Copperhead High Strength Tracer Wire

Product Name	Part Number	Application
High Strength 1830	1830*-HS-**	Open Cut
High Strength 1630	1630*-HS-**	Open Cut
High Strength 1430	1430*-HS-**	Open Cut
High Strength 1230	1230*-HS-**	Open Cut
High Strength 1030	1030*-HS-**	Open Cut

### Horizontal Directional Drill

#### Copperhead SoloShot Tracer Wire - HDD

Product Name	Part Number	Application
SoloShot Extra High Strength	1245*-EHS-**	Horizontal Directional Drill
SoloShot Extra High Strength	1045*-EHS-**	Horizontal Directional Drill
SoloShot Extra High Strength	845*-EHS-**	Horizontal Directional Drill
SoloShot Xtreme	PBX-50*-**	Critical Bores

### Pipe Burst

#### Copperhead SoloShot Tracer Wire - Pipe Burst

Product Name	Part Number	Application
SoloShot Xtreme	PBX-50*-**	Pipe Burst and Critical Bores
SoloShot Burst	3/16*-PB-**	Pipe Burst

\* Denotes Color: B=Blue, G=Green, P=Purple, N=Orange, R=Red, W=White, Y=Yellow, K=Black

\*\* Denotes Spool Length: 500', 1000' & 2500'

### Test Stations

#### Copperhead SnakePit and Cobra Test Stations

Product Name	Part Number	Application
Lite Duty	LD14*TP	Non-roadway applications
Lite Duty - Adjustable	LD14*TP-ADJ	Non-roadway applications
Lite Duty -XL	LDXL36*TP	Non-roadway applications
Concrete/Driveway	CD14*TP	Low traffic drives and driveways
Roadway	RB14*TP	High traffic road ways
Cobra	T1-*01	Above grade
Cobra	T1-*75	Above grade
Cobra	T2-*01	Above grade
Cobra	T2-*75	Above grade
Cobra	T3-*01	Above grade
Cobra	T3-*75	Above grade

\* Denotes Color: B=Blue, G=Green, P=Purple, N=Orange, R=Red, W=White, Y=Yellow, K=Black



## To order from Copperhead Industries:

Ph: 877-726-5644 • Fx: 763-271-3694

www.copperheadwire.com

or contact your local distributor



### PRODUCTS

24

Wire Gauge	Spool Size	Break Load	Coating Thickness
18 awg	500, 1000, 2500	75 lb.	30 mil
16 awg	500, 1000, 2500	115 lb.	30 mil
14 awg	500, 1000, 2500	194 lb.	30 mil
12 awg	500, 1000, 2500	302 lb.	30 mil
10 awg	500, 1000, 2500	513 lb.	30 mil

Wire Gauge	Spool Size	Break Load	Coating Thickness
18 awg	500, 1000, 2500	107 lb.	30 mil
16 awg	500, 1000, 2500	144 lb.	30 mil
14 awg	500, 1000, 2500	282 lb.	30 mil
12 awg	500, 1000, 2500	452 lb.	30 mil
10 awg	500, 1000, 2500	684 lb.	30 mil

Wire Gauge	Spool Size	Break Load	Coating Thickness
12 awg	500, 1000, 2500	1150 lb.	45 mil
10 awg	500, 1000, 2500	2032 lb.	45 mil
8 awg	500, 1000, 2500	2785 lb.	45 mil
.2043"	Custom length spools	4700 lb.	50 mil
7 x 7 stranded CCS	min qty 500' - qty discount at 5,000'		

Wire Gauge	Spool Size	Break Load	Coating Thickness
.2043"	Custom length spools	4700 lb.	50 mil
7 x 7 stranded CCS	min qty 500' - qty discount at 5,000'		
3/16" stainless steel	Custom length spools min qty 500'	3700 lb.	45 mil

Description	Case Quantity	Color
Light duty box, 14" length	20	YEL, BLU, GRN, PUR, ORN, RED, BLK
Light duty adjustable, 18 5/8" - 24"	20	YEL, BLU, GRN, PUR, ORN, RED, BLK
Light duty box, 36" length	10	YEL, BLU, GRN, PUR, ORN, RED, BLK
Concrete/driveway box, 14" length	10	YEL, BLU, GRN, PUR, ORN, RED, BLK
Roadway box, 14" length	5	YEL, BLU, GRN, PUR, ORN, RED, BLK
One terminal; 1" conduit	5	YEL, BLU, GRN, PUR, ORN, RED, BLK
One terminal; 3/4" conduit	5	YEL, BLU, GRN, PUR, ORN, RED, BLK
Two terminals with jumper; 1" conduit	5	YEL, BLU, GRN, PUR, ORN, RED, BLK
Two terminals with jumper; 3/4" conduit	5	YEL, BLU, GRN, PUR, ORN, RED, BLK
Three terminals with jumper; 1" conduit	5	YEL, BLU, GRN, PUR, ORN, RED, BLK
Three terminals with jumper; 3/4" conduit	5	YEL, BLU, GRN, PUR, ORN, RED, BLK





## Copperhead Tracer Wire and Equipment

### Connectors

#### Copperhead SnakeBite Connector

Product Name	Part Number	Application
Locking Connector	LSC1030 *	Main splice and/or service line
Locking Connector	LSC1230 *	Main splice and/or service line
Locking Connector	LSC1430 *	Main splice and/or service line
Single Connector - Regular	SCB-01	Main splice or termination
Single Connector - Large	SCB-01-LG	Main splice or termination
Single Connector - Strain Relief	SCB-01-SR	Main splice
Three-way Lug Connector	3WB-01	Main splice to service line
Pipe Burst Connector	SC-PB-01	Main splice
Pipe Burst Connector	SC-2WPB-01	Main splice
Pipe Burst Connector	SC-3WPB-01	Main splice and/or service line

\*Denotes Color

### Locator

#### Copperhead Viper Mag

Product Name	Part Number	Application
Viper Mag	VIP-MAG	Pipe and cable locator, metal locator
Viper Clamp	VIP-CL2	Apply transmitter signal to target cable
	VIP-CL4	when safe access to the conductor is not possible
Hard Case	VIP-Case	Ultimate protection for your locator

### Equipment

#### Wire Handling Equipment

Product Name	Part Number	Application
CopperCaddy	CC-2008	Transport and dispense wire
Snake Charmer	SC-625	Transport and dispense wire
	SC-725	

### Anode

#### Copperhead Anode

Product Name	Part Number	Application
Magnesium Anode	ANO-1005	All dead ends that are not brought to the surface

## To order from Copperhead Industries:

Ph: 877-726-5644 • Fx: 763-271-3694

www.copperheadwire.com

or contact your local distributor



## PRODUCTS

26

Description	Package Quantity	Color
Twist lock connector	Jar qty of 10, 25 or Bulk box of 100	BLU, YEL, ORN
Twist lock connector	Jar qty of 10, 25 or Bulk box of 100	BLU, YEL, ORN
Twist lock connector	Jar qty of 10, 25 or Bulk box of 100	BLU, YEL, ORN
Direct bury water proof	Pkg qty 20 or bulk box of 100	BLU
Direct bury water proof - large	Pkg qty 8	BLU
Direct bury twist on with strain relief	Pkg qty 20 or bulk box of 100	BLU
3-way direct bury water proof	Pkg qty 10	BLU
Set screw type with shrink wrap water proof	Pkg qty 1	
Set screw type with wax wrap for water proof	Pkg qty 18	
Set screw type with wax wrap for water proof	Pkg qty 18	

Transmitter Features	Receiver Features
1 watt output power	Passive power 60Hz & Ferrous Metal
3 active frequencies 512Hz, 8kHz, 83kHz	3 active frequencies 512Hz, 8kHz, 83kHz
High and low output settings	Twin antenna peak response
Induction & Direct connection modes - (automatically selected)	High contrast responsive display
Signal clamp accessories	IP54 rating
Low battery warning	Simple four button control pad
Good connection indication	One touch gain control
IP54 rating	One touch depth measurement
Long life battery pack	Carbon fiber antenna tube
[4 x D cells - approx. 60 hrs]	Audio and visual indication
Hook for hanging transmitter	2 x AA battery power for approx. 20 hrs
	Continuous battery monitoring
Diameter 2 inches	
Diameter 4 inches	

Description	Features
Minimum arbor 1 3/8"	Heavy duty pneumatic tires
Up to 23" diameter spool	Spring torque tension control
Up to 300lb capacity	
Fits spools with traverse of 6" - 7".	Spring torque tension control
Fits spools with traverse of 8.5" - 10"	Heavy duty aluminum welded construction

Description
Used to complete the electrical circuit





# QUALITY IS OUR CALLING CARD.

## LOCATE YOUR UNDERGROUND UTILITY WITH PINPOINT ACCURACY

### Specify Copperhead

Whether a utility, municipality, engineer or contractor, when planning your next development specify and use Copperhead's Complete Tracer Wire System. Have the confidence of knowing you'll be able to locate your underground utility with pinpoint accuracy for decades to come. Specify Copperhead's Complete Tracer Wire System.

**Call Copperhead Industries, LLC at 877-726-5644 today to put our extensive experience to work for you.**



#### Distributed By:

Tecvalco Ltd

#### Copperhead Industries, LLC

111 Thomas Park Drive

Monticello, MN 55362

Ph: 877-726-5644 • Fx: 763-271-3694

[www.copperheadwire.com](http://www.copperheadwire.com)



Copperhead tracer wire conforms to the APWA Uniform Color Code for sewer, potable water, reclaimed water, electric, communication and gas pipes.  
© 2013 Copperhead Industries, LLC 082013, 5K