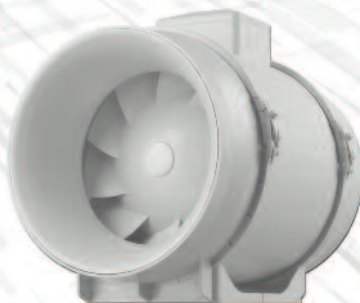
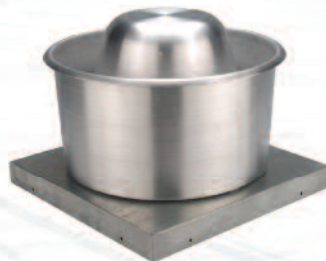


CFMTM
CONTINENTAL FAN

Wholesale Ventilation Products



... better AIRFLOW by DESIGN!

AXC BATHROOM VENTILATION KITS

AXC in-line duct fans provide exhaust that is two to four times greater than traditional bathroom fans. The remote mounted design is suitable for direct shower ventilation and for use with multiple ventilation points. AXC fans are available in a selection of easy-to-install bathroom ventilation kits with one or two exhaust points.

ROOM SIZE	FAN MODEL	AVAILABLE KITS
Up to 100 sq. ft.	AXC100A-ES	RG100-ES; AGK100-ES
Up to 150 sq. ft.	AXC150A-ES	RG150A-ES; AGK150A-ES; DX150A-ES; DXAGK150A-ES
Over 150 sq. ft.	AXC200A-ES	DX200A-ES

NOTE: DX KITS FEATURE TWO VENTS.

ADJUSTABLE GRILLE BATHROOM VENTILATION KITS

Attack moisture at its source. Vary airflow to suit your needs.

RG Kits Include:

AXC Fan, Mounting Brackets, GR Adjustable Grille/Collar (1), Gear Clamp (3)

- ☐ RG100-ES: 4" Fan, 147 cfm
- ☐ RG150A-ES: 6" Fan, 235 cfm



DX Kits Include:

AXC Fan, Mounting Brackets, GR Adjustable Grilles/Collar (2), Gear Clamp (7), Y-Fitting (1)

- ☐ DX150A-ES: 6" Fan, 235 cfm
- ☐ DX200A-ES: 8" Fan, 368 cfm



AEROGRILLE BATHROOM VENTILATION KITS

The attractive, non-adjustable AeroGrille provides superior ventilation when combined with an AXC in-line duct fan.

AGK Kits Include:

AXC Fan, Mounting Brackets, AeroGrille/Collar/Damper (1), Gear Clamp (3)

- ☐ AGK100-ES: 4" Fan, 147 cfm
- ☐ AGK150A-ES: 6" Fan, 235 cfm



DXAGK Kit Includes:

AXC Fan, Mounting Brackets, AeroGrille/Collar/Damper (2), Gear Clamp (7), Y-Fitting (1)

- ☐ DXAGK150A-ES: 6" Fan, 235 cfm



HELPFUL TIPS

- AXC fan mounts easily to attic joists with the exclusive Continental Fan mounting bracket.
- Always use insulated duct in unheated spaces.
- When direct venting a shower, or if noise is a significant factor, use insulated flexible duct to reduce condensation and/or noise levels.
- Add a DFC digital fan control for smart control technology and energy savings.

BATHROOM FANS & KITS

TF140-DC TRANQUIL BATHROOM FAN

TF140-DC Tranquil bathroom fan with its high efficiency DC motor offers whisper quiet exhaust. The fan will operate at the desired airflow rate determined by the toggle switch settings. The toggle switch position determines the desired airflow rate, ranging from 90 to 140 cfm.

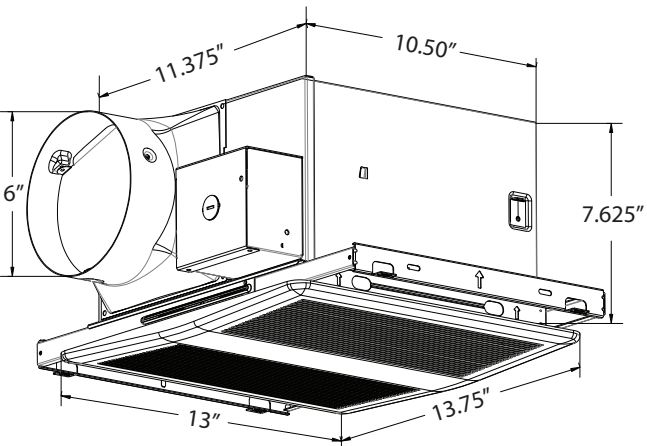
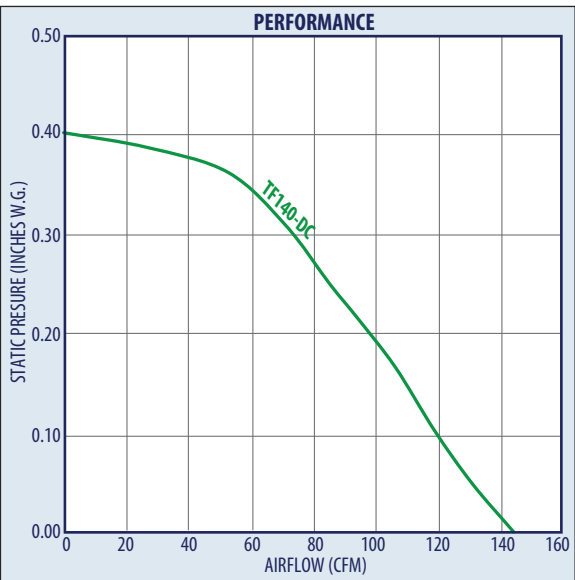
FEATURES & BENEFITS

- Efficient DC motor
- Superior ventilation & efficient performance
- Whisper-quiet, under 1 sone
- Multi-speed fan
- Clean, simple grille design
- Galvanized steel housing
- Easy installation
- Install to joist with mounting frame
- Built-in backdraft damper
- 120V, 60 Hz operation, single phase operation
- Automatic reset thermal overload protection
- Available to fit 6" duct



ACCESSORIES / OPTIONS

- Controls - pages 36-37
- Accessories - pages 38-39



MODEL	MANUFACTURE CODE	PERFORMANCE			
		CFM 0.1" SP	SONES	WATTS	POWER SUPPLY
TF140-DC	SED1104	90	0.5	8.1	120 V 60 Hz 1 Phase
		110	0.9	10.3	
		120	1.2	12.2	
		140	1.5	15.6	

	DIMENSIONS IN INCHES*					
MODEL	DUCT DIA.	GRILLE SIZE	HOUSING SIZE			WT LBS
			L	W	H	
TF140-DC	6	13 x 13.75	11.375	10.5	7.625	5.0

*DO NOT USE FOR CONSTRUCTION

CONSULT FACTORY FOR CERTIFIED PRINTS



TF TRANQUIL BATHROOM FANS

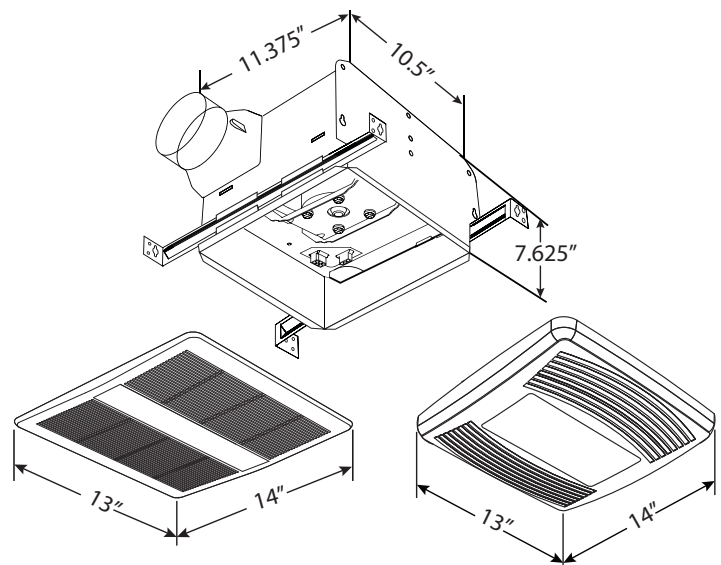
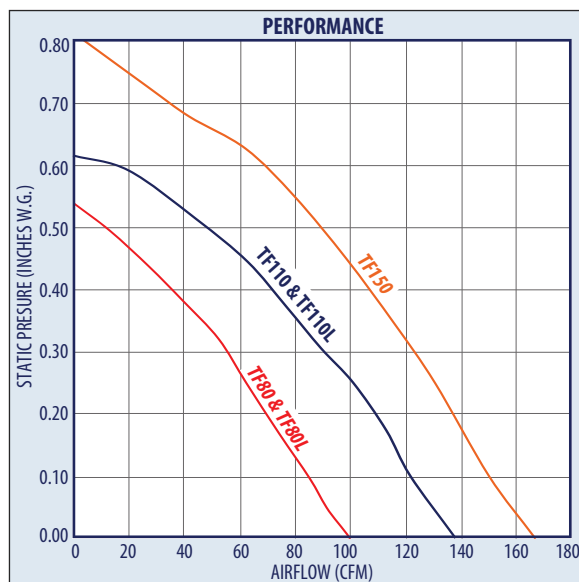
TF Tranquil Bathroom Fans are available in non-lighted and lighted versions, providing superior ventilation and efficient performance that is suitable for all interiors. The built-in damper prevents a backdraft, keeping tempered air in a home when the fan is not operating.

FEATURES & BENEFITS

- Whisper-quiet, under 1 sone
- Non-lighted (TF80 & TF110) & lighted (TF80L & TF110L) versions
- Clean, simple grille design
- Galvanized steel housing
- Easy installation
- Double hanger mounting brackets adjust up to 24" span
- Built-in backdraft damper
- Efficient AC motor
- 120V, 60 Hz operation
- Automatic reset thermal overload protection
- Max 26W GU24 fluorescent light
- Available to fit duct sizes 4" & 6"

ACCESSORIES / OPTIONS

- Controls - pages 36-37
- Accessories - pages 38-39



PERFORMANCE					
MODEL	CFM 0.1" SP	CFM 0.25 SP	SONES	WATTS	ENERGY STAR QUALIFIED
NON-LIGHTED FANS					
TF80	80	58	0.4	25.0	Yes
TF110	110	100	0.9	33.0	Yes, 6" duct only
TF150	150	130	1.1	43.2	No
LIGHTED FANS					
TF80L	80	58	0.4	25.0	Yes
TF110L	110	100	0.9	33.0	Yes, 6" duct only

	DIMENSIONS IN INCHES*					
MODEL	DUCT DIA.	GRILLE SIZE	HOUSING SIZE			WT LBS
			L	W	H	
NON-LIGHTED FANS						
TF80	4 & 6	13 x 14	11.375	10.5	7.625	5.0
TF110	4 & 6	13 x 14	11.375	10.5	7.625	5.0
TF150	6	13 x 14	11.375	10.5	7.625	5.0
LIGHTED FANS						
TF80L	4 & 6	13 x 14	11.375	10.5	7.625	5.0
TF110L	4 & 6	13 x 14	11.375	10.5	7.625	5.0

*DO NOT USE FOR CONSTRUCTION

CONSULT FACTORY FOR CERTIFIED PRINTS

BATHROOM FANS & KITS

CF BATHROOM EXHAUST FANS

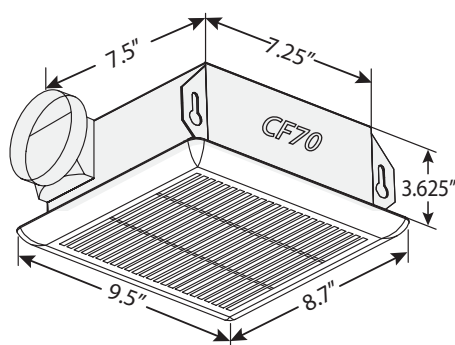
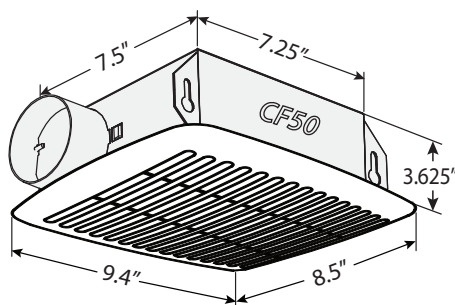
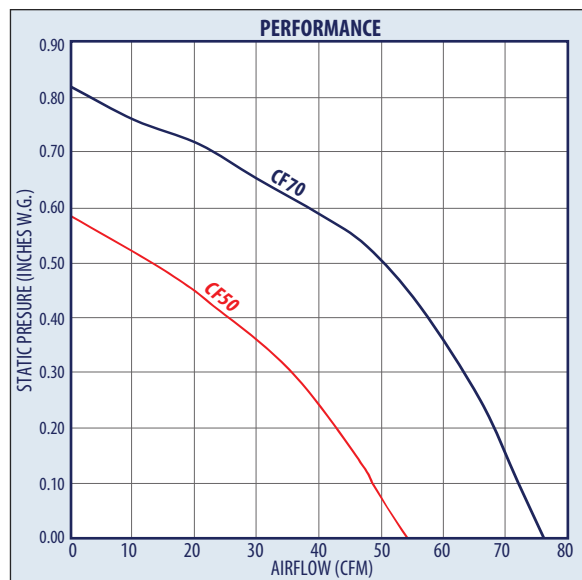
CF Bathroom Exhaust Fans come complete with a clean and simple grille design, suitable for all interiors. The built-in damper prevents a backdraft, keeping tempered air in a home when the fan is not operating.

FEATURES & BENEFITS

- Clean, simple grille design
- Galvanized steel housing
- Easy installation
- Double hanger mounting brackets adjust up to 24" span
- Built-in backdraft damper
- Efficient AC motor
- 120 V, 60 Hz operation
- Automatic reset thermal overload protection
- Contractor packages available (6 units per box)
- Available to fit duct sizes 3" & 4"

ACCESSORIES / OPTIONS

- Controls - pages 36-37
- Accessories - pages 38-39



PERFORMANCE			
MODEL	SONES	WATTS	CFM @ 0.1" SP
CF50	3.5	51	50
CF70	3.5	63	70

DIMENSIONS IN INCHES*					
MODEL	DUCT DIA.	GRILLE SIZE	HOUSING SIZE		
			L	W	H
CF50	3	9.4 X 8.5	7.25	7.5	3.625
CF70	4	9.5 X 8.7	7.25	7.5	3.625

*DO NOT USE FOR CONSTRUCTION

CONSULT FACTORY FOR CERTIFIED PRINTS



HVI Certified model CF70

AEROFAN BATHROOM FANS

Whisper-quiet, two-speed operation sets the AeroFan apart from the competition. These traditional in-ceiling fans are engineered to provide superior ventilation and efficient performance, delivering powerful, effective and quiet ventilation for any bathroom.

FEATURES & BENEFITS

- 2 - speed operation
- Steel housing with corrosion resistant finish
- Long-life ball bearing condenser motor
- Power rating is 120V / 60 Hz
- Thermal overload protection
- Built-in counterbalanced damper
- Adjustable mounting brackets
- Designed for easy installation
- UL Listed for use over a tub/shower enclosure with a GFCI circuit (selected units only)
- Fits 4" & 5" ducts

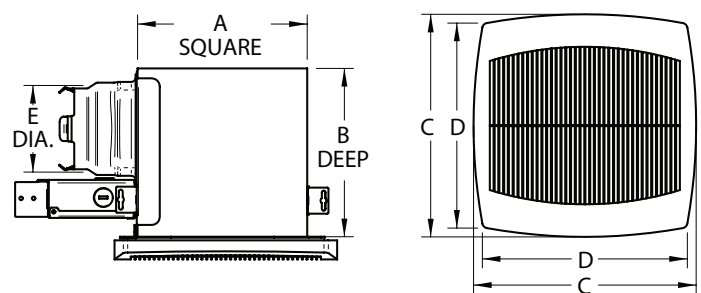
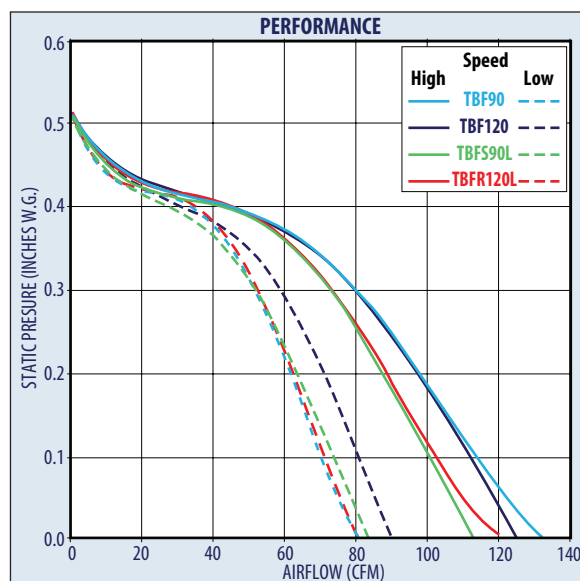


ACCESSORIES / OPTIONS

- Controls - pages 36-37
- Decorative grilles - page 38
- Accessories - pages 38-39

	PERFORMANCE								
MODEL	OPERATING SPEED	CFM	SONES	RMP	AMPS	WATTS			TUB/SHOWER MOUNTING*
						FAN	LAMP	NIGHT-LIGHT	
NON-LIGHTED FANS									
TBF90	Low	50	0.9	750	0.2	21.1	n/a	n/a	Yes
	High	80	2.0	1050	0.2	26.1			
TBF120	Low	80	1.0	775	0.3	31.9	n/a	n/a	Yes
	High	110	2.0	1050	0.3	35.4			
LIGHTED FANS									
TBFS90L	Low	50	0.6	750	0.2	19.6	26	4	No
	High	70	1.5	1050	0.2	23.4	26	4	
TBFR120L	Low	70	0.8	775	0.3	32.3	26	4	Yes
	High	100	2.0	1050	0.3	34.7	26	4	

*THESE FANS ARE ACCEPTABLE FOR USE OVER A BATHTUB OR SHOWER ENCLOSURE WHEN INSTALLED IN A GFCI PROTECTED CIRCUIT.



MODEL	DIMENSIONS IN INCHES*					SHIP WT (LBS) 1-unit / 4-units
	A	B	C	D	E	
TBF90	8.0	8.0	10.3	9.4	4" & 5"	10 / 41
TBF120	9.5	8.0	11.8	10.8	4" & 5"	11 / 45
TBFS90L	8.0	8.5	10.3	9.4	4" & 5"	11 / 45
TBFR120L	9.5	8.5	11.8	10.8	4" & 5"	13 / 53

*DO NOT USE FOR CONSTRUCTION

CONSULT FACTORY FOR CERTIFIED PRINTS



BATHROOM FANS & KITS

COMMERCIAL TF 200 TRANQUIL BATHROOM FAN

TF200 bathroom fan offers higher air delivery for commercial applications. The built-in backdraft damper prevents outside air from entering and keeps tempered air inside a room when the fan is not operating.

FEATURES & BENEFITS

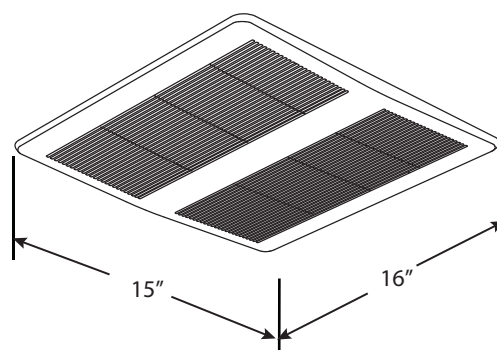
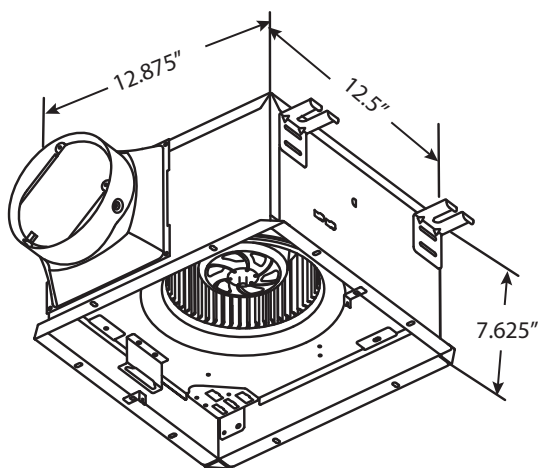
- Superior ventilation & efficient performance
- Clean, simple grille design
- Galvanized steel housing w/corrosion resistant finish
- Easy installation
- Install to joist with included hanger brackets & vibration isolators
- Built-in backdraft damper
- Efficient AC motor
- 120V, 60 Hz operation
- Automatic reset thermal overload protection
- Fits 6" duct

ACCESSORIES / OPTIONS

- Controls - pages 36-37
- Accessories - pages 38-39



MODEL	MANUFACTURE CODE	PERFORMANCE			
		CFM 0.1" SP	SONES	WATTS	POWER SUPPLY
TF200	SEC200	220	2.5	31.3	120V / 60 Hz



	DIMENSIONS IN INCHES*					
MODEL	DUCT DIA.	GRILLE SIZE	HOUSING SIZE			WT LBS
			L	W	H	
TF200	6	15 X 16	12.875	12.5	7.625	8.0

*DO NOT USE FOR CONSTRUCTION

CONSULT FACTORY FOR CERTIFIED PRINTS



CEF CEILING EXHAUST FANS

CEF Ceiling Exhaust Fans provide the perfect solution for hotels, public restrooms, or any commercial spaces that require continuous ventilation. These ceiling or in-line mount, exhaust fans feature a low profile grille and an integral backdraft damper.

FEATURES & BENEFITS

- Acoustically insulated galvanized steel housing
- Low profile grille
- Integral backdraft damper
- Easily removable blower assembly
- Horizontal (standard) or vertical discharge
- 8 position mounting brackets
- Anti-vibration mounts isolate motor for smooth operation
- Thermally protected fan motor

ACCESSORIES / OPTIONS

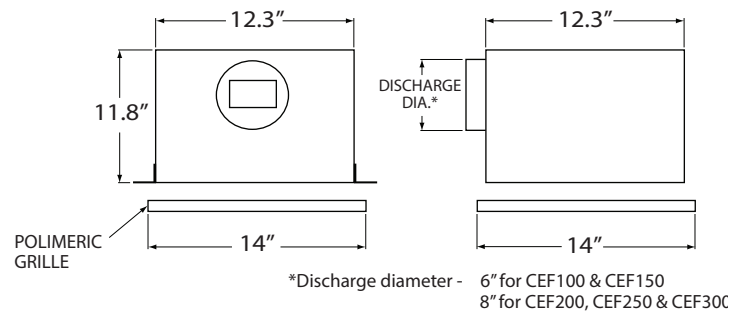
- Variable speed control
- Time delay switch
- In-line kit (CEF400 & larger)
- Radiation damper
- Roof & wall caps
- Square to round discharge transition



MODELS CEF100 THRU CEF300

MODEL	WATTS	RPM*	CFM 0.125" SP	DUCT DIA.	WT LBS
CEF100	88	640 / 650	109	6"	23
CEF150	96	710 / 750	157	6"	23
CEF200	124	740 / 760	210	8"	23
CEF250	160	830 / 860	259	8"	23
CEF300	204	935 / 950	308	8"	24

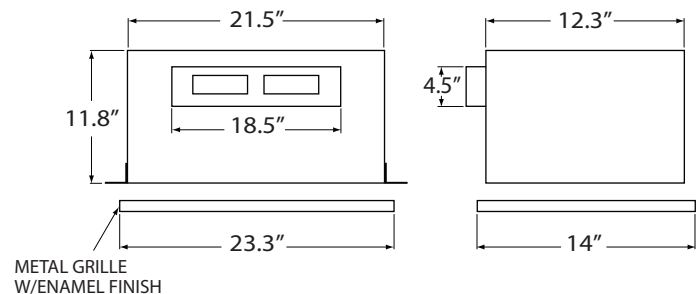
*RPM shown is horizontal / vertical discharge at 0.125".



MODELS CEF400 & CEF700

MODEL	WATTS	RPM*	CFM 0.125" SP	DUCT DIA.	WT LBS
CEF400	137	735 / 755	434	18.5" x 4.5"	34
CEF700	298	960 / 985	701	18.5" x 4.5"	34

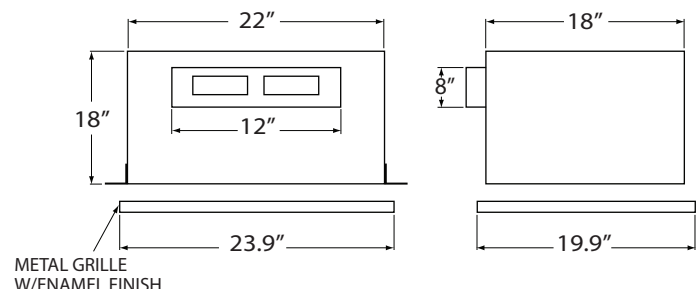
*RPM shown is horizontal / vertical discharge at 0.125".



MODELS CEF900 & CEF1500

MODEL	WATTS	RPM*	CFM 0.125" SP	DUCT DIA.	WT LBS
CEF900	261	650 / 675	901	12" x 8"	65
CEF1500	436	955 / 955	1513	12" x 8"	65

*RPM shown is horizontal / vertical discharge at 0.125".



*DO NOT USE FOR CONSTRUCTION
CONSULT FACTORY FOR CERTIFIED PRINTS

VISIT OUR WEBSITE FOR COMPLETE PERFORMANCE DATA

CONTROLS



VARIABLE SPEED CONTROLS (SOLID STATE)

VSC3 and VSC9 variable speed controls are designed for AC motors.

- ☐ VSC3 Variable Speed Control (Knob-Style) - 3 amp - 3 Wire
- ☐ VSC9 Variable Speed Control (Knob-Style) - 9 amp - 3 Wire
- ☐ DVSC5 Variable Speed Control (Decora Slide) - 5 amp



DIGITAL TIMERS

Time control auto shut off, in preset intervals, allows for proper ventilation and energy savings. The red LED indication light remains lit until the unit shuts off.

- ☐ DT60 Digital Timer 10 - 20 - 30 - 60 Minutes



SPRING WOUND TIMER

Spring wound timer provides energy savings by limiting the "on-time" of the fan, up to 60 minutes. CT timers are easily installed in a standard electrical box. Cover plate not included.

- ☐ CT100V Spring Wound Timer 0 - 1 Hour



ON/OFF SWITCH (W/PILOT LIGHT)

The neon light is ON when the switch is in the ON position. 15Amp, 120V Single Pole/ AC Switch. Cover plate not included.

- ☐ PLS120V ON/OFF Switch w/Pilot Light



OCCUPANCY SENSOR

Single relay occupancy sensor features 180 degree field of view with coverage up to 900 sq. ft. It turns the load on or off when activity is detected or has stopped.

- ☐ SOS125V Occupancy Sensor - 5 AMP



THERMOSTAT

The TST120V thermostat is suitable for direct connection with any resistance heating element or unit heater.

- ☐ TST120V Line Voltage Thermostat, 120V



DEHUMIDISTAT (FOR HUMIDITY CONTROL)

The adjustable sensitivity of DHST dehumidistat allows a user to prevent false cycling. The air cycle mode turns fan on/off for a set period (10, 20, 30, or 45 minutes), cycling hourly.

- ☐ DHST120V Humidity Control



CURRENT SENSOR (SOLID STATE)

The CS120VAF current sensor provides a compact, low cost method of detecting AC current. It is ideal for ON/OFF sensing of remote equipment.

- ☐ CS120AF Current Sensor, 120V, Solid State



PRESSURE SWITCH (WITH TIME DELAY)

Designed for HVAC or Energy Management applications, PST120V pressure switch is an airflow proving switch with an electronic cycle timing board.

- ☐ PST120V Pressure Switch w/Time Delay



AUTO TRANSFORMER

TF auto transformer allows for voltage to be regulated to 60V & 90V increments. Channel frame mounting and metal end shells make for a simple installation.

- ☐ TF120V Auto Transformer - 90/60V

CONTROLS, GRILLES & ACCESSORIES

GRILLES



AEROGRILLE VENTILATION GRILLES

AeroGrilles are designed for use with either in-line or external mount duct fans.

- | | |
|-----------------------------------|-------------------------------|
| <input type="checkbox"/> AG150 | AeroGrille 6" |
| <input type="checkbox"/> AG150-C | AeroGrille 6", Collar |
| <input type="checkbox"/> AG150-CD | AeroGrille 6", Collar, Damper |

ADJUSTABLE VENTILATION GRILLES

Designed for ceiling or wall applications, the fully adjustable GR ventilation grilles are easy to install and adjust.

- | | |
|------------------------------------|--------------------------------------|
| <input type="checkbox"/> GR100 | Adjustable Grille 4", Collar |
| <input type="checkbox"/> GR150 | Adjustable Grille 6", Collar |
| <input type="checkbox"/> GR200 | Adjustable Grille 8", Collar |
| <input type="checkbox"/> GR100-6PK | Adjustable Grille 4", Collar - 6 pcs |
| <input type="checkbox"/> GR150-6PK | Adjustable Grille 6", Collar - 6 pcs |



DECORATIVE VENTILATION GRILLES

These attractive grilles are designed for use with non-lighted versions of AeroFan bathroom fans.

- | | |
|-----------------------------------|------------------------------------------|
| <input type="checkbox"/> TGRRD90 | Grille TBF90, Round Silver/Chrome |
| <input type="checkbox"/> TGRRD120 | Grille TBF120, Round Silver/Chrome |
| <input type="checkbox"/> TGRSQ90 | Grille TBF90, Square Silver/Chrome |
| <input type="checkbox"/> TGRSQ120 | Grille TBF120, Square Silver/Chrome |
| <input type="checkbox"/> TGRCH90 | Grille TBF90, Rectangular Silver/Chrome |
| <input type="checkbox"/> TGRCH120 | Grille TBF120, Rectangular Silver/Chrome |



ACCESSORIES

DUCT REDUCERS/INCREASERS

DRI duct reducers/increasers are used to transition a duct from a larger or smaller size. Available in 28 Ga.

- | | |
|------------------------------------|-------------------------------------------------------|
| <input type="checkbox"/> DRI-04-03 | Duct Reducer/In increaser, 4" - 3" Duct, Plastic |
| <input type="checkbox"/> DRI-06-04 | Duct Reducer/In increaser, 6" - 4" Duct, Galvanized |
| <input type="checkbox"/> DRI-08-06 | Duct Reducer/In increaser, 8" - 6" Duct, Galvanized |
| <input type="checkbox"/> DRI-10-08 | Duct Reducer/In increaser, 10" - 8" Duct, Galvanized |
| <input type="checkbox"/> DRI-12-10 | Duct Reducer/In increaser, 12" - 10" Duct, Galvanized |
| <input type="checkbox"/> DRI-14-12 | Duct Reducer/In increaser, 14" - 12" Duct, Galvanized |



MOUNTING CLAMPS FOR RIGID DUCT

MC mounting clamps are designed for use with rigid duct. The foam neoprene layer creates an air tight installation.

- | | |
|--------------------------------|------------------------------------------|
| <input type="checkbox"/> MC100 | Mounting Clamps for Rigid 4" Duct (2pc) |
| <input type="checkbox"/> MC125 | Mounting Clamps for Rigid 5" Duct (2pc) |
| <input type="checkbox"/> MC150 | Mounting Clamps for Rigid 6" Duct (2pc) |
| <input type="checkbox"/> MC200 | Mounting Clamps for Rigid 8" Duct (2pc) |
| <input type="checkbox"/> MC250 | Mounting Clamps for Rigid 10" Duct (2pc) |
| <input type="checkbox"/> MC300 | Mounting Clamps for Rigid 12" Duct (2pc) |
| <input type="checkbox"/> MC355 | Mounting Clamps for Rigid 14" Duct (2pc) |



GEAR CLAMPS FOR FLEXIBLE DUCT

GC stainless steel gear clamps easily connect a duct fan to flexible insulated duct and other auxiliary pieces.

- | | |
|--------------------------------|--------------------------------------------------|
| <input type="checkbox"/> GC150 | Gear Clamp for 4" - 6" Duct, Stainless Steel |
| <input type="checkbox"/> GC200 | Gear Clamp for 5.5" - 8.5" Duct, Stainless Steel |



LOUVERED SHUTTERS (WITH TAIL PIECE)

LS louvered shutters are designed as plastic molded vent hoods that prevent wind and rain from entering the vent.

- | | |
|-----------------------------------|---------------------------|
| <input type="checkbox"/> LS100-4W | Louvered Shutter, 4" Duct |
| <input type="checkbox"/> LS150-6W | Louvered Shutter, 6" Duct |



ACCESSORIES



WYE FITTINGS

WYE fittings provide an airtight branch fitting. The crimp and bead edging ensures an easy connection.

- | | |
|---------------------------------|--------------------------|
| <input type="checkbox"/> WYE-04 | Y-Fitting, 4"x4"x4" Duct |
| <input type="checkbox"/> WYE-06 | Y-Fitting, 6"x6"x6" Duct |
| <input type="checkbox"/> WYE-08 | Y-Fitting, 8"x8"x8" Duct |

SOUND ATTENUATORS

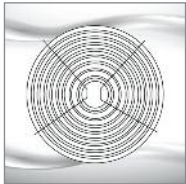
SA sound attenuators reduce fan noise traveling along ventilation ducts. Ideal for either supply or exhaust ducts.



- | | |
|--------------------------------|------------------------------|
| <input type="checkbox"/> SA100 | Sound Attenuator, 4" Duct |
| <input type="checkbox"/> SA150 | Sound Attenuator, 6" Duct |
| <input type="checkbox"/> SA200 | Sound Attenuator, 8" Duct |
| <input type="checkbox"/> SA250 | Sound Attenuator, 10" Duct |
| <input type="checkbox"/> SA300 | Sound Attenuator, 12.4" Duct |
| <input type="checkbox"/> SA400 | Sound Attenuator, 16" Duct |

GUARDS

Utilize a PG guard as a grille, or mount it directly on the outlet/inlet of a fan to allow for a safe installation.



- | | |
|--------------------------------|-----------------|
| <input type="checkbox"/> PG100 | Guard, 4" Duct |
| <input type="checkbox"/> PG125 | Guard, 5" Duct |
| <input type="checkbox"/> PG150 | Guard, 6" Duct |
| <input type="checkbox"/> PG200 | Guard, 8" Duct |
| <input type="checkbox"/> PG250 | Guard, 10" Duct |
| <input type="checkbox"/> PG300 | Guard, 12" Duct |

ROOF CAPS

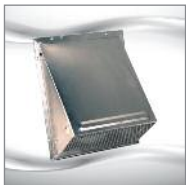
Black plastic roof caps include damper, screen, and collar. Aluminum wall caps include spring controlled damper.



- | | |
|--------------------------------|----------------------------------|
| <input type="checkbox"/> RC100 | Roof Cap, 4" Duct, Black Plastic |
| <input type="checkbox"/> RC150 | Roof Cap, 6" Duct, Black Plastic |
| <input type="checkbox"/> RC200 | Roof Cap, 8" Duct, Black Plastic |

WALL CAPS

Aluminum wall caps include spring controlled damper.



- | | |
|--------------------------------|----------------------------------------------|
| <input type="checkbox"/> WC100 | Wall Cap, 4" Duct, Aluminum, Reducer 4" - 3" |
| <input type="checkbox"/> WC150 | Wall Cap, 6" Duct, Aluminum |
| <input type="checkbox"/> WC200 | Wall Cap, 8" Duct, Aluminum |

FLEXIBLE INSULATED DUCT

FL models are UL-181 Class 1 air duct, wrapped with R4.2 insulation. FLM models are UL-181 and ULCS-110 M Class air duct, wrapped with 2-ply black polyester laminated inner core.



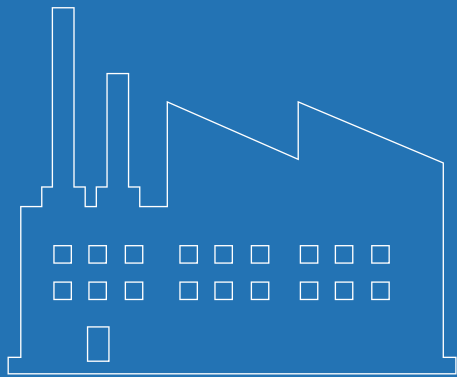
- | | | |
|-----------------------------------|------------------------------------|-------------------------------------------|
| <input type="checkbox"/> FLM100 | | Flexible Insulated 4" Duct - 10' Length |
| <input type="checkbox"/> FL100 | | Flexible Insulated 4" Duct - 12.5' Length |
| <input type="checkbox"/> FL100-25 | <input type="checkbox"/> FLM100-25 | Flexible Insulated 4" Duct - 25' Length |
| <input type="checkbox"/> FL125 | <input type="checkbox"/> FLM125 | Flexible Insulated 5" Duct - 25' Length |
| <input type="checkbox"/> FL150 | <input type="checkbox"/> FLM150 | Flexible Insulated 6" Duct - 25' Length |
| <input type="checkbox"/> FL200 | <input type="checkbox"/> FLM200 | Flexible Insulated 8" Duct - 25' Length |
| <input type="checkbox"/> FL250 | <input type="checkbox"/> FLM250 | Flexible Insulated 10" Duct - 25' Length |
| <input type="checkbox"/> FL300 | <input type="checkbox"/> FLM300 | Flexible Insulated 12" Duct - 25' Length |

LINT TRAP

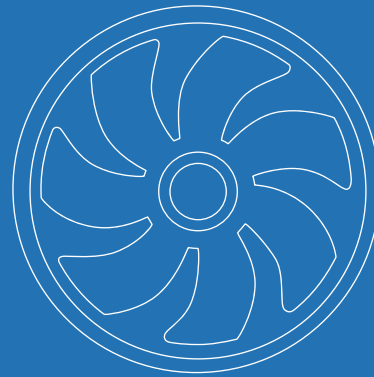
Reduce maintenance associated with dryer vents by installing a LT100 Lint Trap, which mounts to a wall or ceiling.

- | | |
|--------------------------------|------------------------------|
| <input type="checkbox"/> LT100 | Lint Trap for Dryer, 4" Duct |
|--------------------------------|------------------------------|





***Industrial Fans
& Blowers***



***OEM Solutions
& Custom Fans***



***Commercial Fans
& Dampers***



***Residential Fans &
Air Purifiers***



Wholesale Ventilation Products

Continental Fan Manufacturing Inc.
203 Eggert Road
Buffalo, New York 14215

Continental Fan Canada Inc.
12-205 Matheson Blvd. E
Mississauga, Ontario L4Z 3E3

Continental Fan Manufacturing Inc.
6274 Executive Blvd.
Dayton, Ohio 45424

1-800-779-4021 • www.continentialfan.com

Distributed by:

