

# EB Series

Simkar's Low-Profile Emergency Ballast series allows a fixture to be used for both normal AC operation and emergency operation. In the event of a power failure, the unit will switch to emergency mode and operate one or two of the existing lamps for a minimum of 90 minutes each. All ballasts include a battery pack, battery charger and inverter circuit in a heavy-duty compact steel case. The low-profile emergency ballast can be mounted on top of the fixture or in the wire-way, and is designed to comply with the latest codes and performance standards, including UL 924.

**HOUSING** Heavy gauge steel case, white powder coat finish.

**ILLUMINATION** EB100 operates one lamp at 500 initial lumens. EB60 and EB50 can operate one or two lamps at 450, 700, or 1400 initial lumens. Compatible with most 1, 2, 3, and 4-lamp electronic, standard, energy saving and dimming AC ballasts.

**ELECTRICAL** Dual 120/277V voltage. Charge rate/power on LED indicator light and push-to-test switch for code compliance.

**BATTERY** Sealed nickel-cadmium, maintenance-free, rechargeable with life expectancy of 7 to 10 years.

**MOUNTING** Inside, on top of, or remote mount from existing fluorescent fixtures. Remote mounting distance of emergency ballasts should not exceed half the AC ballast manufacturer's recommended remote mounting distance from the lamps for standard AC ballasts, or 50 feet, whichever is less.

**LISTINGS** UL listed, damp location, for retrofit/field installation to UL924 and C-UL, NFPA 101 Life Safety Code, and NEC requirements.

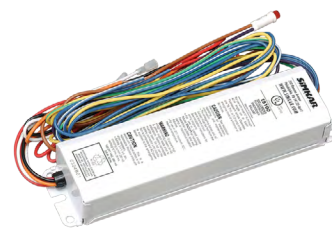
**WARRANTY** 5 year limited warranty on all electronics and case.

Project

Catalog Number

Type

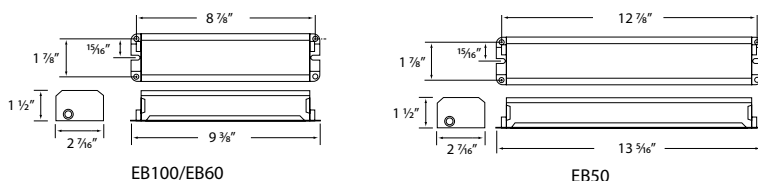
Date



## EB Series Fluorescent Emergency Ballasts

SERIES	OPTIONS
EB	<b>50</b> = Operates one or two lamps, 1400 maximum lumen output <b>60</b> = Operates one or two lamps, 700 maximum lumen output <b>100</b> = Operates one lamp, 450 maximum lumen output

## Dimensions



## Performance

Model	EB100	EB60	EB50
Lumen	500	700	1400
Lamp Type	Number and Wattage of Lamps Supported		
T5			
T8	One - 25W-40W	One - 17W-110W Two - 17W-40W	One - 17W-110W Two - 17W-40W
T10	One - 25W-40W	One - 17W-110W Two - 17W-40W	One - 17W-110W Two - 17W-40W
T12	One - 25W-40W	One - 17W-110W Two - 17W-40W	One - 17W-110W Two - 17W-40W
CFL	One - 26W-42W		
Long CFL			