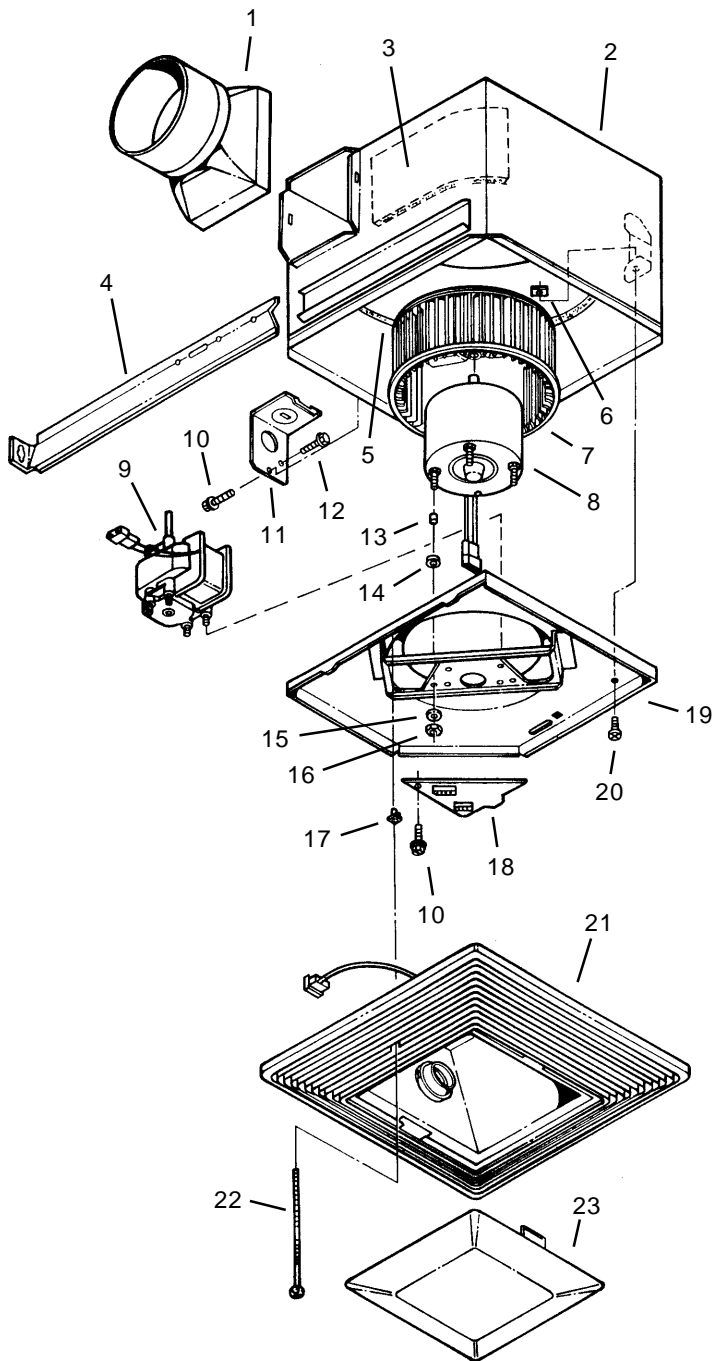


SERVICE PARTS

MODELS S80LU & S110LU

KEY NO.	PART NO.	DESCRIPTION
1	97013349	Damper/Duct Connector Assembly
2	97013400	Housing Assembly
3	99500389	Insulation — Short
4	98003036	Mounting Bracket (4 Req.)
5	99500388	Insulation — Long
6	93260454	Sheet Metal Nut #8-18*
7	99020270	Impeller — S80LU
	99020269	Impeller — S110LU
8	99080450	Motor — S110LU
9	99080448	Motor — S80LU
10	99170245	Screw #8-18 x .375 (2 Req.)*
11	98008868	Knockout Panel
12	99150471	Ground Screw #10-32 x .500*
13	99710033	Spacer (4 Req.)
14	99100483	Grommet (4 Req.)
15	99250254	Washer #8 (4 Req.)*
16	99260425	Nut #8-32 (4 Req.)*
17	99420631	Grille Nut (2 Req.)
18	97013567	Wiring Box Cover Assembly
19	97013401	Venturi Plate Assembly
20	93150459	Screw #8-18 x .500*
21	97013566	Grille Assembly
22	99150565	Grille Screw (2 Req.)
23	99110736	Light Lens
--	97013569	Blower Assembly — S80LU (Includes Key Nos. 7, 9, 13, 14, 15, 16, 17 & 19)
--	97013570	Blower Assembly — S110LU (Includes Key Nos. 7, 8, 13, 14, 15, 16, 17 & 19)

* Standard Hardware. May be purchased locally.
Order service parts by "PART NO." — NOT by "KEY NO."



BROAN-NUTONE ONE YEAR LIMITED WARRANTY

Broan-NuTone warrants to the original consumer purchaser of its products that such products will be free from defects in materials or workmanship for a period of one year from the date of original purchase. THERE ARE NO OTHER WARRANTIES, EXPRESS OR IMPLIED, INCLUDING, BUT NOT LIMITED TO, IMPLIED WARRANTIES OF MERCHANTABILITY OR FITNESS FOR A PARTICULAR PURPOSE.

During this one-year period, Broan-NuTone will, at its option, repair or replace, without charge, any product or part which is found to be defective under normal use and service.

THIS WARRANTY DOES NOT EXTEND TO FLUORESCENT LAMP STARTERS AND TUBES. This warranty does not cover (a) normal maintenance and service or (b) any products or parts which have been subject to misuse, negligence, accident, improper maintenance or repair (other than by Broan-NuTone), faulty installation or installation contrary to recommended installation instructions.

The duration of an implied warranty is limited to the one-year period as specified for the express warranty. Some states do not allow limitation on how long an implied warranty lasts, so the above limitation may not apply to you.

BROAN-NUTONE'S OBLIGATION TO REPAIR OR REPLACE, AT BROAN-NUTONE'S OPTION, SHALL BE THE PURCHASER'S SOLE AND EXCLUSIVE REMEDY UNDER THIS WARRANTY. BROAN-NUTONE SHALL NOT BE LIABLE FOR INCIDENTAL, CONSEQUENTIAL OR SPECIAL DAMAGES ARISING OUT OF OR IN CONNECTION WITH PRODUCT USE OR PERFORMANCE. Some states do not allow the exclusion or limitation of incidental or consequential damages, so the above limitation may not apply to you.

This warranty gives you specific legal rights, and you may also have other rights, which vary from state to state. This warranty supersedes all prior warranties.

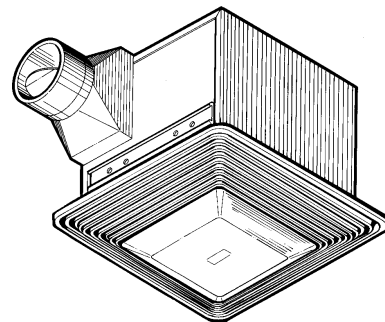
To qualify for warranty service, you must (a) notify Broan-NuTone at the address stated below or telephone: 1-800-637-1453, (b) give the model number and part identification and (c) describe the nature of any defect in the product or part. At the time of requesting warranty service, you must present evidence of the original purchase date.

Broan-NuTone LLC, 926 West State Street, Hartford, WI 53027 (1-800-637-1453)



MODELS S80LU & S110LU

SOLITAIRE ULTRA-SILENT® FAN / LIGHT / NIGHT LIGHT



READ AND SAVE THESE INSTRUCTIONS

WARNING

TO REDUCE THE RISK OF FIRE, ELECTRIC SHOCK, OR INJURY TO PERSONS, OBSERVE THE FOLLOWING:

1. Use this unit only in the manner intended by the manufacturer. If you have questions, contact the manufacturer at the address or telephone number listed in the warranty.
2. Before servicing or cleaning unit, switch power off at service panel and lock the service disconnecting means to prevent power from being switched on accidentally. When the service disconnecting means cannot be locked, securely fasten a prominent warning device, such as a tag, to the service panel.
3. Installation work and electrical wiring must be done by a qualified person(s) in accordance with all applicable codes and standards, including fire-rated construction codes and standards.
4. Sufficient air is needed for proper combustion and exhausting of gases through the flue (chimney) of fuel burning equipment to prevent backdrafting. Follow the heating equipment manufacturer's guideline and safety standards such as those published by the National Fire Protection Association (NFPA), and the American Society for Heating, Refrigeration and Air Conditioning Engineers (ASHRAE), and the local code authorities.

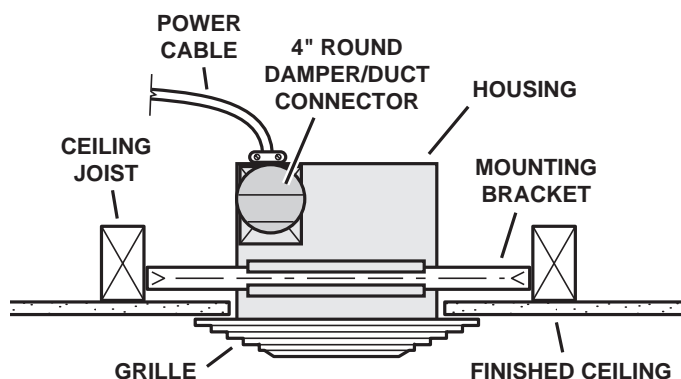
WARNING

5. When cutting or drilling into wall or ceiling, do not damage electrical wiring and other hidden utilities.
6. Ducted fans must always be vented to the outdoors.
7. If this unit is to be installed over a tub or shower, it must be marked as appropriate for the application and be connected to a GFCI (Ground Fault Circuit Interrupter) - protected branch circuit.
8. Never place a switch where it can be reached from a tub or shower.
9. This unit must be grounded.

CAUTION

1. For general ventilating use only. Do not use to exhaust hazardous or explosive materials and vapors.
2. This product is designed for ceiling installation only. This product is designed for installation in ceilings up to a 7/12 pitch. Ductwork must point up. **DO NOT MOUNT THIS PRODUCT IN A WALL.**
3. To avoid motor bearing damage and noisy and/or unbalanced impellers, keep drywall spray, construction dust, etc. off power unit.
4. Please read specification label on product for further information and requirements.

TYPICAL INSTALLATION



This unit can be installed anywhere between joists using mounting brackets provided.

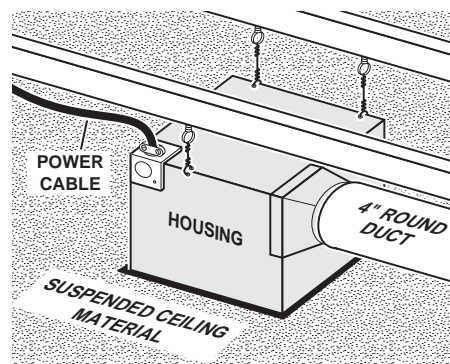
The unit can be installed in a suspended ceiling using wire as shown.

The unit will operate most quietly when located where the shortest possible duct run and minimum number of elbows will be needed.

Plan to supply the unit with proper line voltage and appropriate power cable.

Follow these basic steps when installing this unit:

- Nail housing to joists.
- Attach ductwork.
- Connect power cable.
- Install blower assembly.
- Fasten grille to housing.



**INSTALLER: LEAVE THIS MANUAL WITH THE HOMEOWNER.
HOMEOWNER: USE AND CARE INSTRUCTIONS ON PAGE 3.**