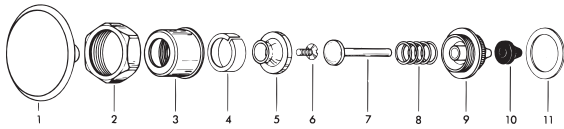


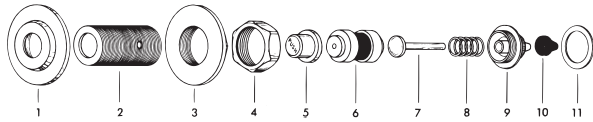
## Push, Pull, Pedal Push and Pedal Handle Push Button



### 3" Push Button For Exposed Royal® & Crown®

Item No.	Code No.	Part No.	Description
<b>Repair Kits</b>			
	<b>3303396</b>	C-64-A	Push Button Repair Kit contains item nos. 7-11
	<b>3303347</b>	C-1000-A	Replacement Kit contains item nos. 1,5 & 6
<b>Repair Parts</b>			
1-11.	<b>0303351</b>	C-42-A	Push Button Assembly
1.	*	C-42	3" Push Button CP
2.	<b>0301082</b>	A-6	CP Coupling
3-4.	<b>0302109</b>	B-7-A	Socket
5.	*	C-41	Shank Head
6.	*	C-43	Screw RB
7.	*	B-8-A	Plunger
8.	<b>0303019</b>	C-7	Spring
9.	*	B-49	Bushing
10.	<b>5302297</b>	B-39	Seal
11.	<b>5301139</b>	A-31	Gasket

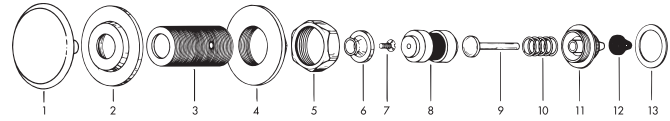
\*Available in kit only.



### Push Button For Concealed Royal® & Crown®

Item No.	Code No.	Part No.	Description
<b>Repair Kits</b>			
	—	C-9-A	Complete Push Button Assembly. Items 1-11. Consult factory.
	<b>3303398</b>	C-77-A	Push Button Repair Kit contains item nos. 7-11
<b>Repair Parts</b>			
1.	<b>0302248</b>	B-23	CP Wall Flange 2-3/4" O.D.
1.	<b>0302257</b>	B-23	CP Wall Flange 3-1/2" O.D.
2.	—	B-6/B-6-A	In-Wall Sleeve. If required, consult factory.
3.	<b>0302260</b>	B-24	RB Locknut
4.	<b>0301082PO</b>	A-6	RB Coupling
5.	<b>0303002</b>	C-2	Index Push Button
6.	—	B-15-A	N/A. Multiple lengths available. Consult factory.
7.	*	B-8-A	Plunger
8.	*	C-7	Spring
9.	*	B-41	Bushing
10.	—	B-85	Permex® Seal
11.	<b>5301139</b>	A-31	Gasket

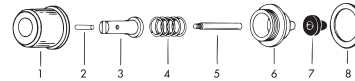
\*Available in kit only.



### 3" Push Button For Concealed Royal® & Crown®

Item No.	Code No.	Part No.	Description
<b>Repair Kits</b>			
	—	C-43-A	3" Push Button Assembly. Items 1-13. Consult factory.
	<b>3303398</b>	C-70-A	Push Button Repair Kit contains item nos. 9-13*
	<b>3303399</b>	C-77-A	Push Button Repair Kit contains item nos. 9-13 – Triple Seal Cone Seal*
	<b>3303347</b>	G-1000-A	Replacement Kit contains item nos. 1,6 & 7
<b>Repair Parts</b>			
1.	*	C-42	3" Push Button CP
2.	<b>0302248</b>	B-23	CP Wall Flange 2-3/4" O.D.
2.	<b>0302257</b>	B-23	CP Wall Flange 3-1/2" O.D.
3.	—	B-6/B-6-A	In-Wall Sleeve. If required, consult factory.
4.	<b>0302260</b>	B-24	RB Locknut
5.	<b>0301083</b>	A-6	RB Coupling
6.	*	C-41	Shank Head
7.	*	C-43	RB Screw
8.	—	B-15-A	N/A. Multiple lengths available. Consult factory.
9.	*	B-8-A	Plunger
10.	<b>0303019</b>	C-7	Spring
11.	*	B-41	Bushing
12.	<b>5302297</b>	B-39	Seal
13.	<b>5301139</b>	A-31	Gasket

\*Available in kit only.



### Pull Button For Exposed Royal® & Crown® (Seat Action)

Item No.	Code No.	Part No.	Description
<b>Repair Kit</b>			
	<b>3303393</b>	C-61-A	Repair Kit contains item nos. 4-9
<b>Repair Parts</b>			
1.	<b>0303174</b>	C-25	Socket
2.	<b>5303213</b>	C-29	RB Pin
3.	<b>0303155</b>	C-23	CP Plunger Sleeve
4.	*	C-28	Spring
5.	*	C-24	Plunger Stem
6.	*	C-61	Bushing
7.	<b>5302297</b>	B-39	Seal
8.	<b>5301139</b>	A-31	Gasket

\*Available in kit only.