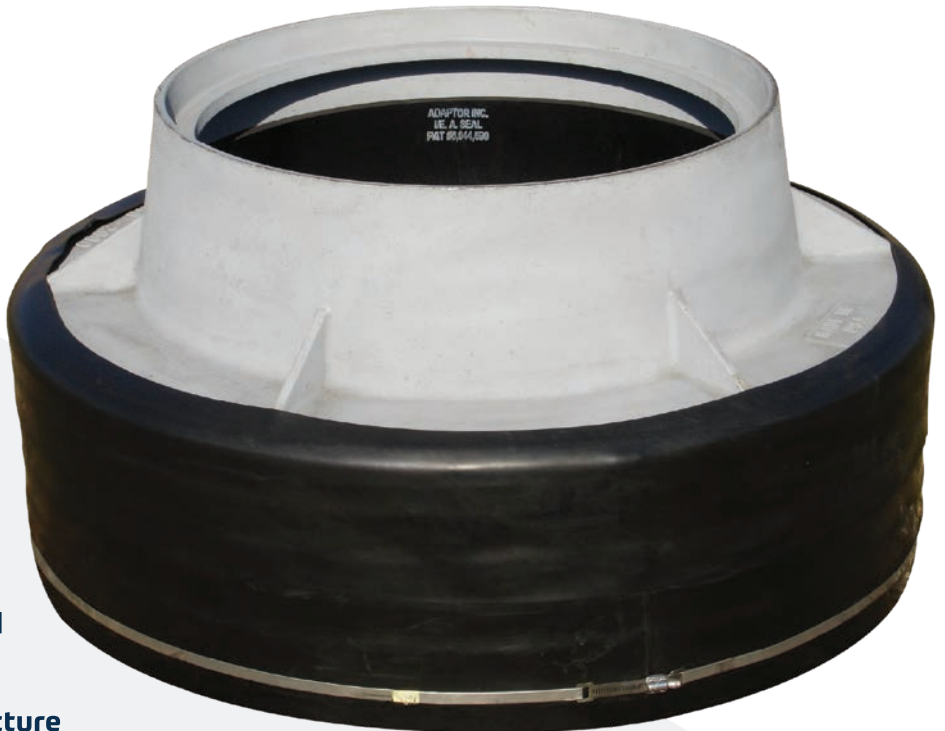


INTERNAL/EXTERNAL MANHOLE SEAL

ADAPTOR

THE INTERNAL/EXTERNAL ADAPTOR SEAL (IEA SEAL) IS A SANITARY MANHOLE SEAL THAT PREVENTS INFILTRATION INTO THE SEWER SYSTEM. THE IEA SEAL STOPS INFLOW BETWEEN THE MANHOLE FRAME AND THE TOP ADJUSTING RING, AND SEALS THE MANHOLE CHIMNEY FROM THE FRAME TO THE CONE. A RUBBER GASKET SEALS THE FRAME AND ALLOWS IT TO MOVE WITH THE ROAD SURFACE DURING THERMAL EXPANSION, AND CREATES A STRESS BARRIER BETWEEN THE FRAME AND DIRECT LOAD BEARING OF THE TRAFFIC PASSING OVER THE COVER, HELPING PRESERVE THE INTEGRITY OF THE MANHOLE CHIMNEY.

THE INTERNAL/EXTERNAL ADAPTOR SEAL IS THE ONLY MANHOLE SEAL IN THE INDUSTRY TO SEAL BOTH INTERNALLY AND EXTERNALLY WHILE INCORPORATING A $\frac{3}{4}$ " RUBBER RING UNDER THE CASTING. THE ONE-PIECE DESIGN ALLOWS FOR A QUICK AND EASY INSTALLATION OF THE SEAL WITH NO SPECIAL TOOLS. IEA SEALS ARE MANUFACTURED WITH STANDARD SLEEVE LENGTHS OF 12" AND 16". EXTENSION SLEEVES ARE ALSO AVAILABLE.



Advantages

- Custom Sizes
- Eliminates inflow and infiltration
- Allows movement from thermal expansion and contraction
- Preserves integrity of the structure

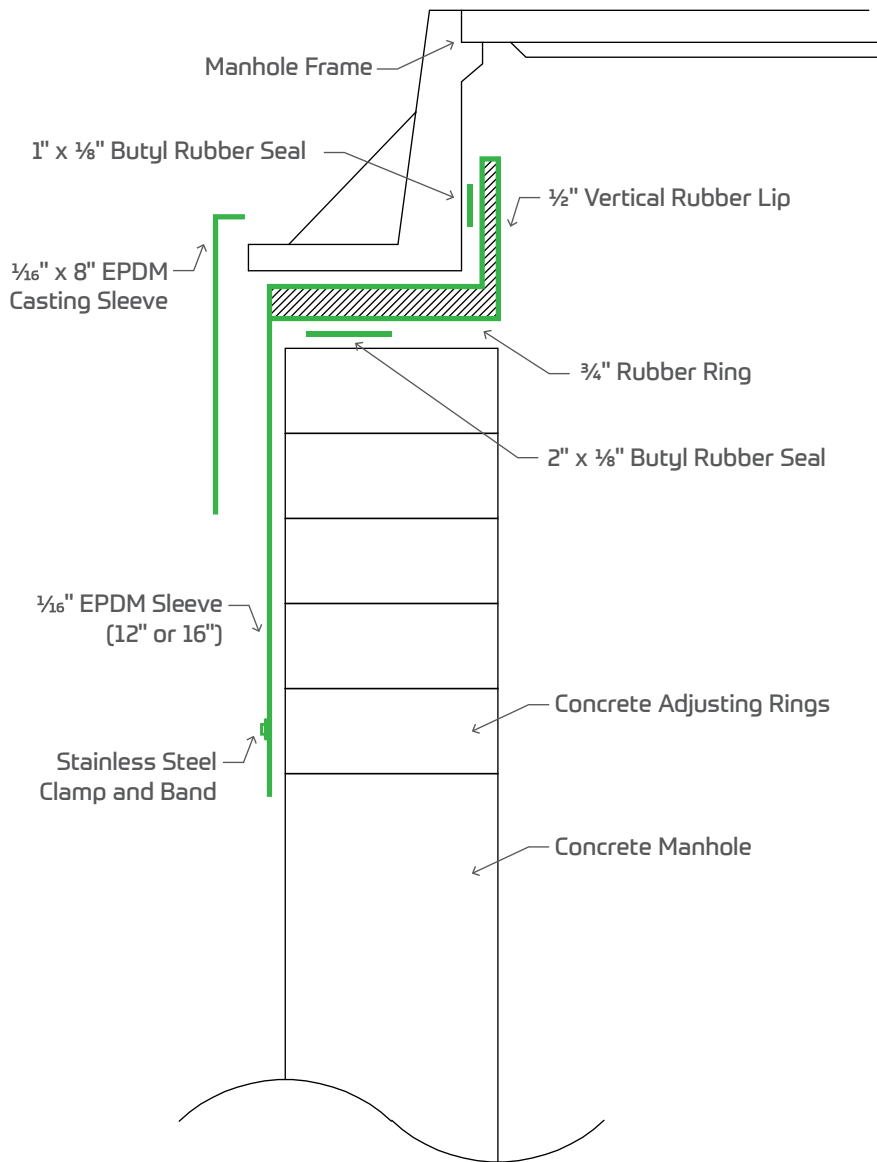
CALL OR VISIT OUR WEBSITE TO LEARN MORE

2151 South 54th Street, West Allis, WI 53219 • office 414.764.6733 • fax 414.764.1494 • adaptorinc.com •



American Made

INTERNAL/EXTERNAL MANHOLE SEAL



Order Information Needed

- * **Casting ID#:** example (1661, 1550, 1022-z2)
- * **Sleeve length:** 12" or 16" (amount of adjusting rings plus 2")
- * **O.D. of adjusting rings :** (34", 35", 36", 38", 40")

Product Details

All sanitary manholes shall be provided with an Internal/ External Adaptor Seal with a rubber sleeve to seal the outside of the chimney from the manhole frame down to the cone. The IEA Seal shall be installed per Adaptor Inc. installation instructions.

The IEA Seal is made from a high-grade EPDM rubber sleeve, recycled rubber ring, and Butyl mastic which meets or exceeds the ASTM C877 and ASTM C932 specifications.

The IEA seal shall remain flexible for a 20-year design life. It will allow for repeated vertical movement of the frame of not less than 2" and at least 1/2" of horizontal movement, with both rates of movement occurring at rates not less than .10 inch per minute.

