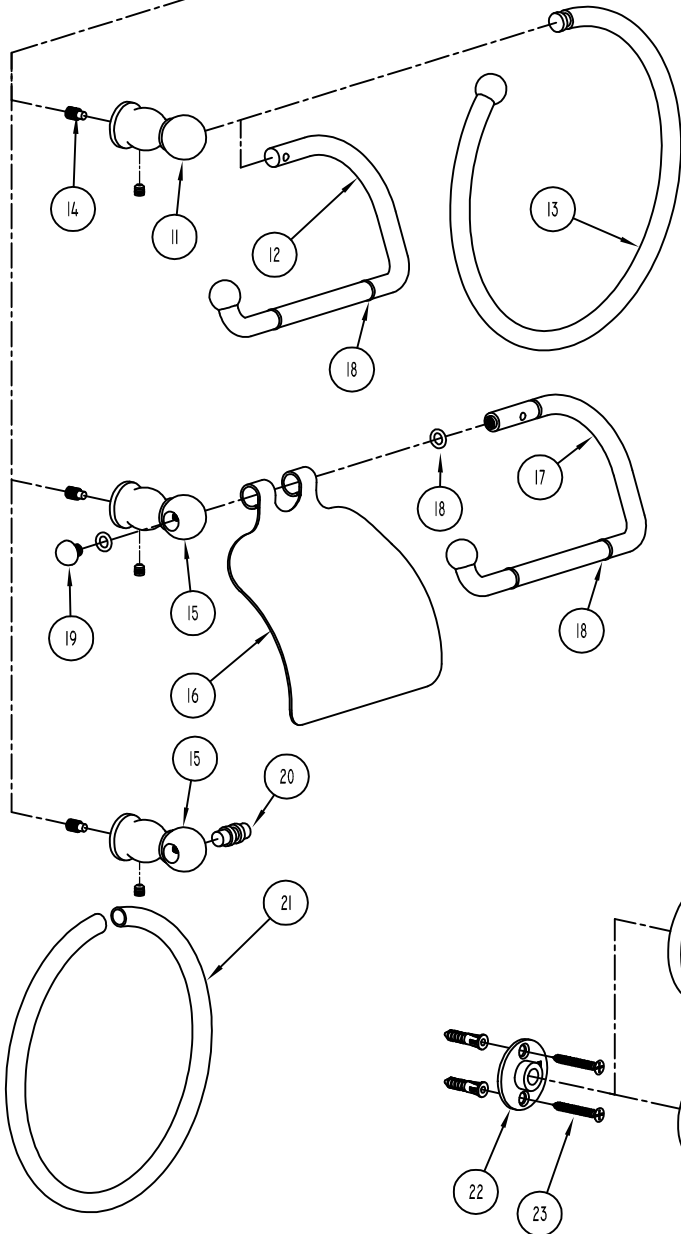
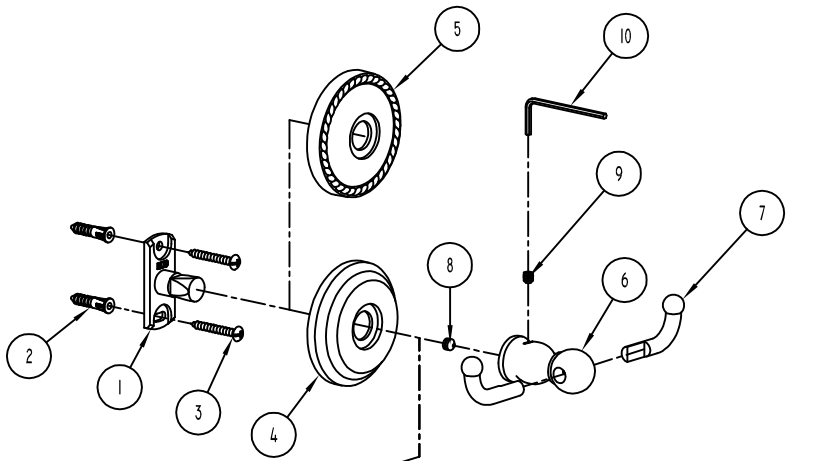


CANTERBURY - CHELSEA



PARTS LIST		
ITEM	PART NAME	PART NO.
1	MOUNTING BRACKET	IIXXD
2	NO 8 WALL ANCHOR	CA
3	NO 8 X 1-1/4" TAP SCREW	8-1.2CPZ
4	CHELSEA ROSETTE	I100C *
5	CANTERBURY ROSETTE	I500C *
6	DOUBLE HOOK POST	I111P *
7	HOOK ARM	XX11A *
8	M6 X 6 SET SCREW	SM6-6S
9	M5 X 5 SET SCREW	SM5-5S
10	2-1/2 MM HEX KEY	M2.5HK
11	HANGING TISSUE POST	I109P *
12	HANGING TISSUE BAR	XX09B *
13	OPEN RING	XX21R *
14	M6 DOG POINT SET SCREW	SM6-10DA
15	HOODED TISSUE POST	I127P *
16	HOOD	XX27H *
17	HOODED TISSUE BAR	XX27B *
18	O-RING	XX27R
19	HOOD FINISHING SCREW	XX27F *
20	TOWEL RING COUPLER	XX05C
21	6" RING	XX05T/6 *
22	SINGLE HOOK MOUNTING BRACKET	I1XXB
23	NO 8 X 1-1/4" FLAT HEAD TAP SCREW	8-1.2PFZ
24	CHELSEA SINGLE HOOK ROSETTE	I100B *
25	SINGLE HOOK POST	I110P *

* REQUIRES FINISH CODE

CHELSEA FINISHES:

- 3 POLISHED BRASS
- 14 POLISHED NICKEL
- 15 SATIN NICKEL
- 15A ANTIQUE NICKEL
- 26 POLISHED CHROME

CANTERBURY FINISHES:

- 3 POLISHED BRASS
- 15 SATIN NICKEL
- 15A ANTIQUE NICKEL
- 26 POLISHED CHROME