



A PRODUCT SHEET OF NEPTUNE TECHNOLOGY GROUP

E-CODER® Solid State Absolute Encoder



The E-CODER® is Neptune's high-resolution solid state absolute encoder register. The E-CODER features a custom integrated-circuit design that digitally encodes the rotation of the measuring chamber, providing "absolute" registration with no internal battery requirement. The E-CODER functions in two modes: E-CODER BASIC and E-CoderPLUS. The E-CODER BASIC mode functionality is the same as ProRead™ (ARB® VI), featuring programmability up to a 10-digit ID number, three user characters, and 3-6 digit meter reading. In addition to the meter reading, the E-CODER provides a visual readout on rate of flow every twelve seconds when the LCD display is activated. When connected to Neptune® R900®, R450™, or cellular MIU (CMIU™), the E-CODER automatically operates in E-CoderPLUS mode, providing a high-resolution, 8-digit remote meter reading, and value-added features including leak, tamper, and reverse flow detection. True point-of-use leak detection is provided by monitoring a 24-hour period in fifteen-minute intervals. Tamper detection is provided by reverse flow detection and monitoring the number of days of zero flow over the previous 35 days.

The E-CoderPLUS features are communicated through the E-CODER protocol, allowing host software platforms to interpret the data and pass the information directly to billing packages, CIS screens, and operational and maintenance reports. The E-CoderPLUS features enhance customer service and improve operational efficiencies for water utilities.

The E-CODER is available in two different configurations – inside set meters and pit set meters. For inside set applications, the E-CODER is housed in our plastic encoder register housing with terminal screws. For pit set applications, the E-CODER is housed in a glass lens and copper can enclosure with factory-potted wire connections.

Warranty

Neptune provides a 10-year limited warranty with respect to its E-CODER solid state absolute encoder register for performance, materials, and workmanship.

KEY FEATURES

- "Absolute" 9-digit meter reading on display
- Up to 8-digit remote meter reading
- Battery-free functionality
- Pit set version: roll-sealed copper shell and glass lens
- Inside set version: plastic enclosure
- True point-of-use leak detection*
- Tamper detection*
- Reverse flow detection*
- LCD leak indicators
- Directional flow indicator
- Rate of flow on LCD displays unaffected by meter position or in-line piping stresses

KEY BENEFITS

- Enhanced "customer care"
 - Leak history/diagnostics
 - Proactive leak notification
- Increased operational efficiencies
 - Work order reduction for high water bill inquiries
 - Prioritization of meter maintenance
 - Drought management
 - Reduction of water loss through proactive notification of water leaks
- Tamper management
 - Identification and prioritization of potential tamper situations

* When connected to Neptune R900 or R450 RF MIUs.

Options

Sizes

- Available for all sizes and makes of current Neptune meters

Electronic Accessory Equipment

- R900 Wall and Pit RF MIUs
- R450 Wall and Pit RF MIUs
- Cellular Wall and Pit MIUs

Data Collection Systems

- Pocket ProReader
- Advantage
- CE5320
- MRX920™
- R900® Gateways

Units of Measure

- US Gallons, Cubic Feet, Imperial Gallons, Cubic Metres

9-digit local registration

8-digit remote registration

4-8 digits can be communicated for billing

Technical Specifications

Materials

- Inside Set Housing: polycarbonate
Pit Set Housing: copper shell and glass lens
- Connecting wire: 3-lead #22 AWG
- Remote receptacles: ABS, nylon, and polycarbonate

Distance

- A single register may be located with up to 500 feet (152 m) of wire from receptacle or MIU.

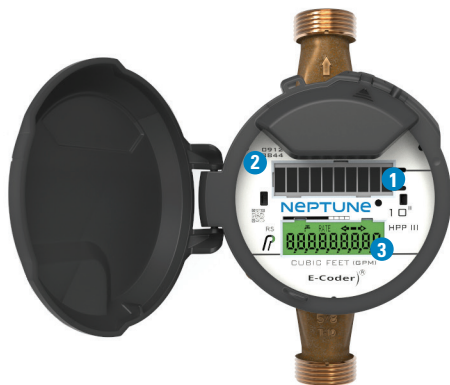
- Two networked registers can be located with up to 300 feet (91 m) of wire from receptacle or MIU.

Environmental Conditions

- Operating temperature: 15°F to 149°F (-10°C to 65°C)
- Storage temperature: -40°F to +158°F (-40°C to +70°C)
- Operating humidity: 0 to 100% (pit version)

Register

- Warranty: 10 years



- 1 Solar Panel
- 2 Date of Manufacture
- 3 LCD Display

	<p>FLOW INDICATOR Shows the direction of flow through the meter: ON Water in use. OFF Water not in use. Flashing Water is running slowly. (-) Reverse flow. (+) Forward flow.</p>
	<p>LEAK INDICATOR Displays a possible leak: OFF No leak indicated. Flashing Intermittent leak indicates that water has been used for at least 50 of the 96 15-minute intervals during the previous 24-hour period. On Continuously Indicates water use for all 96 15-minute intervals during the previous 24-hour period.</p>
<p>RATE</p>	<p>RATE OF FLOW Average flow rate is displayed every twelve (12) seconds on LCD display.</p>
	<p>LCD DISPLAY Nine-digit LCD displays the meter reading in billing units of measure: U.S. gallons, cubic feet, Imperial gallons, or cubic metres.</p> <ul style="list-style-type: none"> 1 E-CODER Basic Reading/Customary 6-digit remote reading 2 Customary sweep hand digits 3 E-CoderPLUS Reading (8-digit remote reading)



#winyourday
neptunetg.com

Neptune Technology Group
1600 Alabama Highway 229
Talladega, AL 36078
800-633-8754 f 334-283-7293