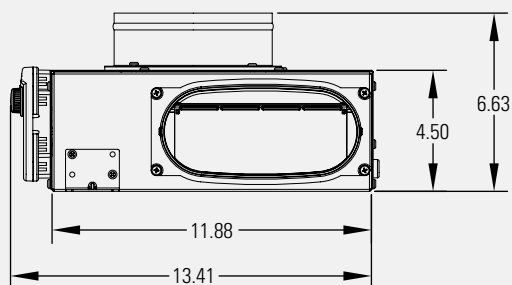
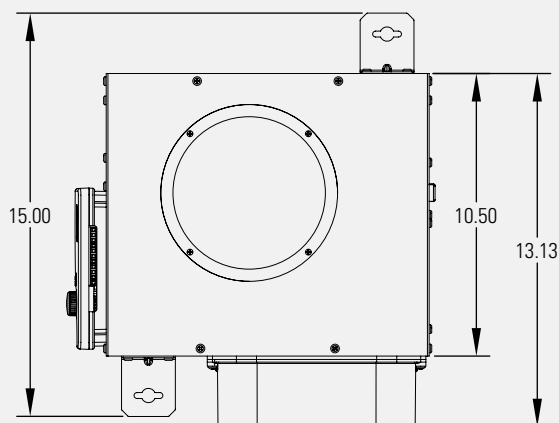


8142 VENTILATOR WITH BACKDRAFT DAMPER NO FILTER

SPECIFICATIONS

Overall Dimensions	6.6" H x 13.1" W x 13.4" L including control
Inlet Collar	6" Round
Outlet Collar	6" Oval
Ventilation Time Dial Setting	Off, 15-60 minutes, (5 min increments), Test/Reset
Ambient Temperature	0°F to 160°F
Outdoor Temperature	Setting "A", no limit, time only
Limit Settings	"B", 105°F high limit, 20°F low limit "C", 100°F high limit, 30°F low limit "D", 95°F high limit, 40°F low limit
Voltage	115 VAC, 1 phase, 60 Hz
Power	Includes 5' power cord with 3 prong plug
Ducting	6" diameter flexible insulated duct
Warranty	5 years
ETL	Tested to UL Standard 705 - Power Ventilators Not For Outdoor Use



FEATURES

- + Unit is designed, when properly installed, to achieve ASHRAE Standard 62.2 2010
- + Operates a minimum of one hour out of every four to meet 2012/2015 IRC requirements
- + Complies with 2012 & 2015 IECC (2.8 cfm/watt)
- + Control is integrated into the ventilator
- + High and Low Temperature Limit Lock-outs while maintaining ASHRAE 62.2 2010
- + Simple plug-in installation
- + Installation temperature range up to 160°F

BENEFITS

- + The precise amount of outside air needed in today's efficiently designed homes is delivered
- + Optimize energy savings by locking out ventilation during hottest/coldest times of the day
- + Improves indoor air quality
- + Robust design handles hot attics up to 160°F
- + Installation labor reduced, requires only a switched outlet and 24 volt wiring to HVAC system
- + Furnace or air handler does not require an ECM motor to meet efficacy requirement

When properly installed and set, the Aprilaire Model 8142 Fresh Air Ventilator will meet the mechanical ventilation requirements of:

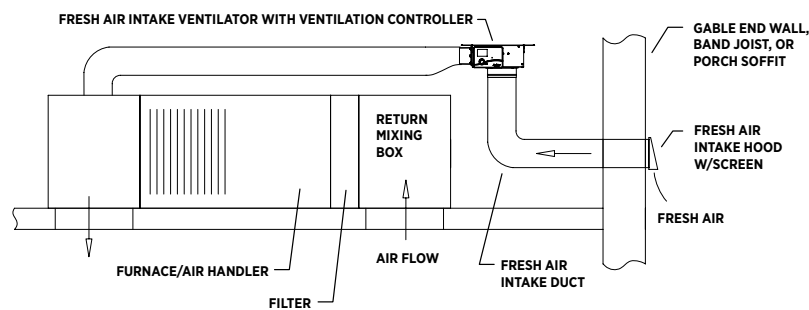
- + Energy Star Certified Homes, Version 3
- + EPA Indoor airPLUS, Version 1
- + 2012 & 2015 International Residential Code (IRC)
- + 2012 & 2015 International Energy Conservation Code (IECC)
- + California Energy Commission Title 24

PERFORMANCE			
Static Pressure* (in WC)	Airflow (CFM)	Current (amps)	Efficacy (CFM/watt)
0.0	245	0.63	3.30
0.2	220	0.64	2.96
0.4	190	0.64	2.57
0.6	160	0.63	2.12
0.8	120	0.61	1.69
1.0	95	0.60	1.35

* Measured across ventilator.

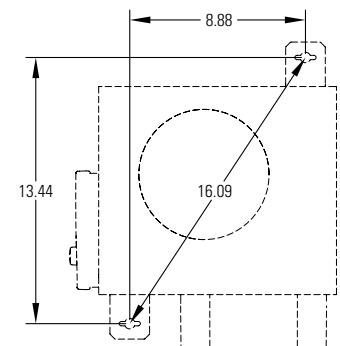
Typical Attic Installation

FRESH AIR INTAKE VENTILATOR DUCTED TO SUPPLY DUCT



Mounting Bracket Dimensions

INCHES



Alternate Attic Installation

FRESH AIR INTAKE VENTILATOR DUCTED TO RETURN DUCT

