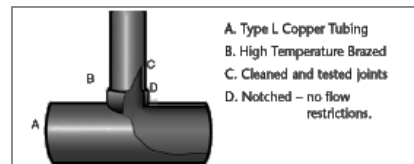




## Cut-to-size 72" Headers



Please note: This product is not recommended to be used with press on type fittings. We can make this product with extended outlets for this type of fitting. Please ask your wholesaler to contact us for a quote.

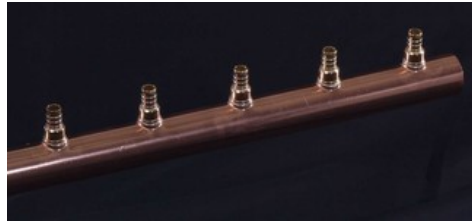


**Copper Outlets, 1", 1 1/4", 1 1/2" or 2" Pipe Run with 24 1/2" or 3/4" copper outlets on **3" centers****

Stock Number	Pipe Run	Outlet Size	Unit/Box
CC1005024	1"	1/2"	5
CC1255024	1 1/4 "	1/2"	4
CC1505024	1 1/2"	1/2"	3
CC2005024	2"	1/2"	2

# Copper Manifolds, Headers & Tees

CC1007524	1"	3/4"	4
CC1257524	1 1/4"	3/4"	4
CC1507524	1 1/2"	3/4"	3
CC2007524	2"	3/4"	2
CC1251024	1 1/4"	1"	4
CC1501024	1 1/2"	1"	3
CC2001024	2"	1"	2



**24 Pex Outlets, 1", 1 1/4", 1 1/2" or 2" Pipe Run with 24 1/2" Crimpex Lead Free outlets on 3" centers.** The last two products listed have **1/2" or 3/4" (optional) pex valves.**

Stock Number	Pipe Run	Outlet Size	Unit/Box
CX1005024	1"	1/2" PEX	6
CX1255024	1 1/4"	1/2" PEX	4
CX1505024	1 1/2"	1/2" PEX	3
CX2005024	2"	1/2" PEX	2

**Variations available to the above at an additional charge.**  
3/4" Crimpex

CX1005024V	1"	1/2" PEX V	2
CX1255024V	1 1/4"	1/2" PEX V	2
CX1505024V	1 1/2"	1/2" PEX V	2
CX2005024V	2"	1/2" PEX V	2

**Variations available to the above at an additional charge.**  
3/4" Crimpex valves

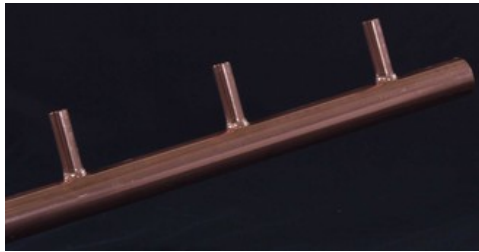
Please note: This product is not recommended to be used with press on type fittings. We can make this product with extended outlets for this type of fitting. Please ask your wholesaler to contact us for a quote.



**18 Copper Outlets, 1", 1 1/4", 1 1/2" or 2" Pipe Run with 18 1/2", or 3/4" copper outlets on 4" centers.** Also available in 1 1/4", 1 1/2" or 2" with 18 1" copper outlets.

Stock Number	Pipe Run	Outlet Size	Unit/Box
CC1005018	1"	1/2"	5
CC1255018	1 1/4"	1/2"	4
CC1505018	1 1/2"	1/2"	3
CC2005018	2"	1/2"	2
CC1007518	1"	3/4"	4
CC1257518	1 1/4"	3/4"	4
CC1507518	1 1/2"	3/4"	3
CC2007518	2"	3/4"	2
CC1251018	1 1/4"	1"	3
CC1501018	1 1/2"	1"	3
CC2001018	2"	1"	2

**12 Copper Outlets, 1", 1 1/4", 1 1/2" or 2" Pipe Run with 12 1/2",**



or 3/4" copper outlets on **6" centers**. Also available in 1 1/4", 1 1/2" or 2" pipe run with 12 - 1" copper outlets.

Stock Number	Pipe Run	Outlet Size	Unit/Box
CC1005012ER	1"	1/2"	5
CC1255012ER	1 1/4"	1/2"	4
CC1505012ER	1 1/2"	1/2"	3
CC2005012ER	2"	1/2"	2
CC1007512ER	1"	3/4"	4
CC1257512ER	1 1/4"	3/4"	4
CC1507512ER	1 1/2"	3/4"	3
CC2007512ER	2"	3/4"	2
CC1251012ER	1 1/4"	1"	3
CC1501012ER	1 1/2"	1"	3
CC2001012ER	2"	1"	2



**30 Copper Outlets, Cut to Size 62"** Pipe run 1" with 30 1/2" copper outlets on **2" centers**  
*Please Note: There will be outlet wastage when cutting 2" center product to **meet plumbing codes.***

Stock Number	Pipe Run	Outlet Size	Unit/Box
CC1005030	1"	1/2"	5