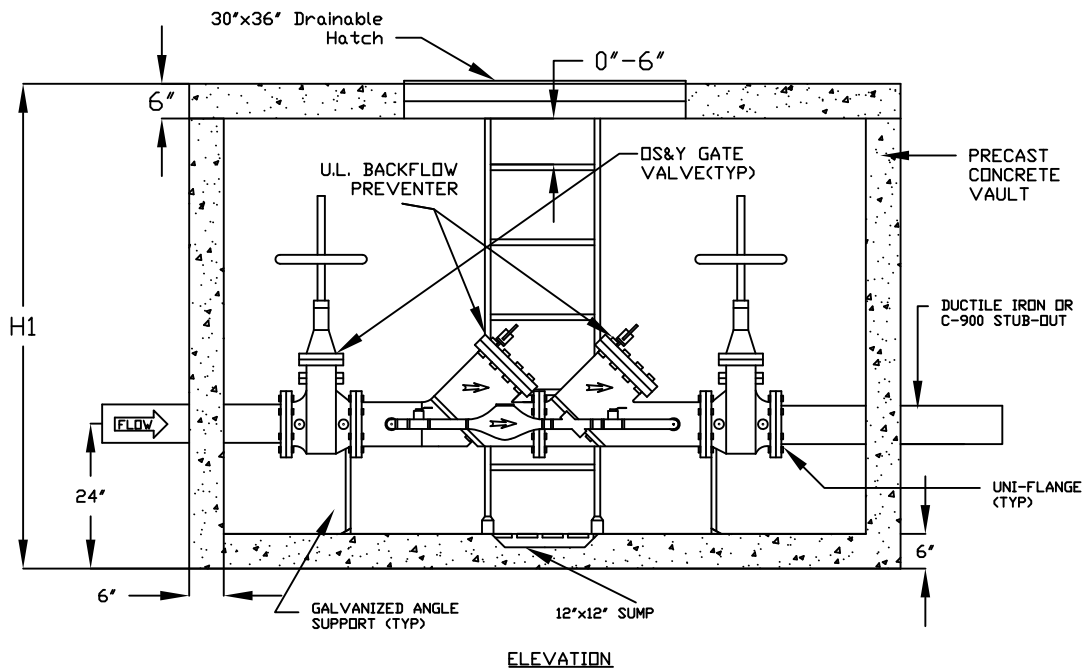


Model	Size	L1	W1	H1	Wt. (Lbs)
DDBP3	3'	9'-0"	5'-0"	5'-6"	16,000
DDBP4	4'	9'-0"	5'-0"	5'-6"	16,000
DDBP6	6'	9'-0"	5'-0"	5'-6"	16,000
DDBP8	8'	9'-0"	5'-0"	5'-6"	18,000
DDBP10	10'	9'-0"	5'-0"	7'-0"	19,000



**Description**

Includes Certified Detector Check Backflow Preventer with 3/4" Detector Meter with Backflow Preventer, & (2) UL/FM DS&Y Gate Valves & Stub Out for Hook-up w/ Ductile Iron Pipe.

Completely Assembled and Installed in Precast Concrete Vault w/ Drainable Galvanized Steel Cover or Drainable Aluminum Hatchway.

**Specifications**

- CONCRETE: CLASS 1 CONCRETE WITH DESIGN STRENGTH OF 4500 PSI AT 28 DAYS. UNIT IS OF MONOLITHIC CONSTRUCTION AT FLOOR AND FIRST STAGE OF WALL WITH SECTIONAL RISER TO REQUIRED DEPTH.
- REINFORCEMENT: GRADE 60 REINFORCED. STEEL REBAR CONFORMING TO ASTM A615 DN REQUIRED CENTERS OR EQUAL.
- HATCHWAY: 1/4" ALUMINUM DIAMOND PLATE COVER WITH EXTRUDED ALUMINUM FRAME. HATCH TO BE FURNISHED WITH 316 STAINLESS STEEL SNAP LOCK HINGES.

**The Turner Co.**

DRAWN BY: DJH	JOB NO:	DATE: 4/21/11
CUSTOMER & PRODUCT FORT WORTH DETECTOR CHECK VAULT		JOB NAME