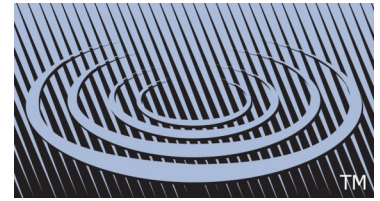


Jackel



Sump Basin Cover



The SF44 Sump Basin Cover is ideal for use with a submersible sump pump where a gas / radon tight sump basin seal is required.

The corrosion proof single piece cover is constructed of injection molded structural foam polyethylene and provides superior structural toughness and reliability.

The SF44 is available with 1-1/4", 1-1/2", 2" or 3" slip fit discharge flanges and 2" or 3" threaded vent flanges.

Specifications

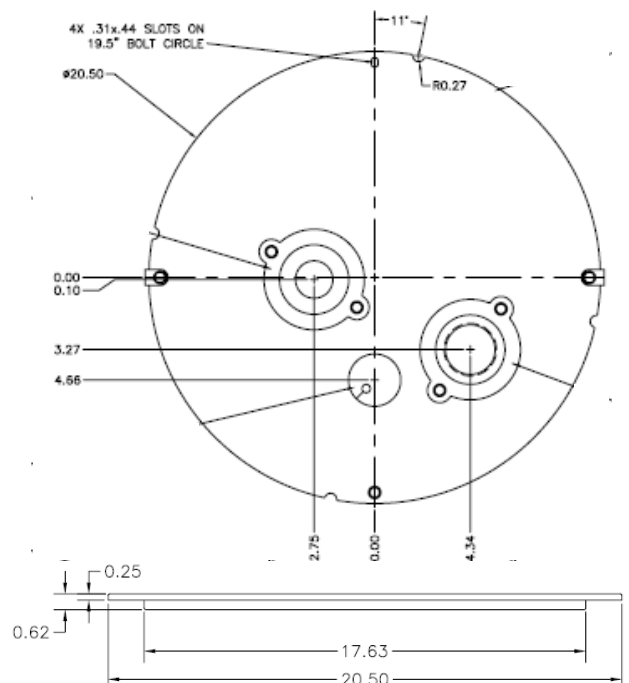
- **Cover Material:** Injection molded high density structural foam
- **Fittings:** Acrylonitrile butadiene styrene (ABS)
- **Washers and Bolts:** 301 Stainless Steel
- **Structural Thickness:** 5/8"

Part Number: SF44

Features and Benefits

- For use on SF20 and SF22A basins
- Heavy duty structural foam injection molded construction
- Gas and radon tight
- Hole location provides maximum versatility
- Works with all submersible sump pumps
- Available with 1-1/4", 1-1/2", 2" or 3" slip fit discharge flanges and 2" or 3" threaded vent flanges
- 5/8" thick
- Available in .075" steel

Dimensions



© 2014 Jackel, Inc.
SF44, 01/14