



ECO-VALVE

Figure # 206AB

Low Lead Brass Threaded Gate Valve

Product Features

- 125# WSP / 200# WOG
- Brass Body
- Screw in Bonnet
- Non-Rising Stem
- Solid Wedge Disc
- Threaded Ends
- NSF 61-G & NSF 372 Certified

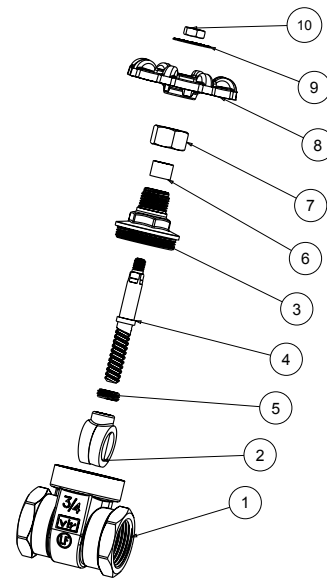


Certified to
ANSI/NSF 61



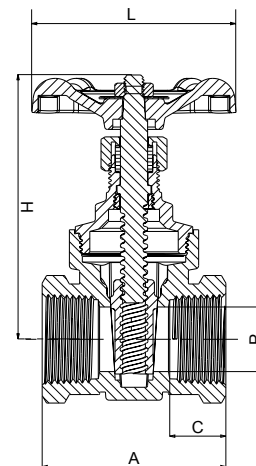
Materials & Specifications

Item	Description	Material	Specification
1	Body	Low Lead Brass	C28500
2	Wedge	Low Lead Brass	C28500
3	Bonnet	Low Lead Brass	C28500
4	Stem	Low Lead Brass	C28500
5	Ring	Low Lead Brass	C28500
6	Packing ring	Graphite	WRAS approved
7	Packing nut	Brass	B124 C37700
8	Handwheel	Aluminum	B85
9	Disc	Aluminum	B85
10	Nut	Zinc Plated Steel	A36



Dimensions, Weights (inches-lbs.) & Valve Data

Size	1/2	3/4	1	1-1/4	1-1/2	2	2-1/2	3	4
A	1.97	2.12	2.44	2.75	2.84	3.23	3.81	4.37	5.15
C	0.65	0.65	0.78	0.86	0.86	0.96	1.10	1.29	1.49
H	2.79	3.17	3.93	4.21	4.82	6.27	70.9	8.03	10.31
L	2.36	2.36	2.75	3.15	3.15	3.75	5.12	5.12	5.90
P	0.51	0.74	1	1.25	1.50	2.00	2.36	2.79	3.81
Cv	10.8	23	42	72	120	210	309	413	725
Wt	0.49	0.78	1.13	1.82	2.38	3.97	5.78	8.88	15.25



RED-WHITE VALVE CORP.

20600 Regency Lane, Lake Forest, CA 92630

TEL: 949.859.1010 • FAX: 949.859.7200 • www.redwhitevalvecorp.com

(150527)