



VEE GEE Scientific

2017

Retail CATALOG/PRICING





VEE GEE Scientific

Laboratory Equipment & Supplies

With VEE GEE Scientific, you can count on:

- Unparalleled Customer Service
- Wide Selection & High Quality
- Detailed Product Specifications
- Fast & Accurate Shipping

Have a Great 2017!

Best Regards,
VEE GEE Scientific, Inc.

CONTACT INFORMATION

BUSINESS HOURS:
8:30 AM TO 4:00 PM PST

INQUIRY TO:
sales@clarksonlab.com

PHYSICAL / MAILING ADDRESS:
Clarkson Lab & Supply Inc
350 Trousdale Drive
Chula Vista, CA 91910

CUSTOMER SERVICE :
(619) 425-1932

FAX (24/7):
(619) 425-7917

TABLE OF CONTENTS

Application Kits

Wine.....	4
Beer.....	4
Soil.....	4
Wastewater.....	4
Aqua-Culture.....	4
Automotive.....	4

GLASSWARE

Beakers.....	5
Beaker Kits.....	5
Burets.....	5
Buret Kit.....	5
Crucibles.....	6
Cylinders.....	6
Cylinder Kits.....	6
Filter Holders.....	7
Flasks.....	8
Flask Kit.....	8
Flask Stoppers.....	8
Funnels.....	9
Media Bottles.....	9
Pipets.....	10

HYDROMETERS

Alcohol.....	11
API.....	11-12
ASTM.....	11,15
Plato.....	12
Battery Syphon Set.....	12
Baume (Heavy).....	12
Brix.....	12-13
Calcium Chloride.....	13
Cases.....	16
Certification.....	16
Liquid Petroleum Gas (LPG).....	14
Sodium Chloride.....	13
Soil Analysis.....	15
Specific Gravity.....	14-15

MICROSCOPES

Clinical/Compound

1400 Series.....	17
1300 Series.....	17
1200 Series.....	17
1100 Series.....	17

Fluorescence

1400 Series.....	18
1200 Series.....	18

Industrial / Metallurgical

1400 Series.....	18
1200 Series.....	18

Inverted

1400 Series.....	19
1200 Series.....	19

Stereo, Dual-Magnification

1100 Series.....	19
1200 Series.....	19
1300 Series.....	19

Stereo, Zoom

1100 Series.....	19-20
1200 Series.....	19-20
1300 Series.....	20

Camera Systems

Adapters, DSLR.....	21
Video, Color CCD.....	21
Digital w/ Microscopy Software.....	21
Digital SLR.....	21
Video Eyepiece.....	21

MICROSCOPES (Cont.)

Lighting

Fluorescent Ring Lamps.....	21
LED Light Source & Accessories.....	22
LED Sodium Package.....	28

Parts & Accessories

Condensers.....	22
Dust Covers.....	22
Eyepieces.....	22
Filters.....	22
Fluorescence Kits & Accessories.....	23
Fuses.....	23
Immersion Oil.....	23
Kohler Illumination.....	23
Lamps.....	23
Lenses, Supplementary.....	23
Microscope Cases.....	25
Objectives.....	23-24
Phase Contrast Centering Telescopes.....	24
Polarizing Kits.....	25
Stage Plates.....	25

Reticles & Micrometers

Crosshair.....	26
Grid.....	26
Howard Mold Count.....	26
IMA/USP.....	26
Pointer.....	26
Scale.....	26
Stage Micrometers/Calibration Plates.....	26
Walton & Becket (3:1).....	26

OPTICAL ANALYTICAL Instruments

Polarimeter

Manual.....	28
-------------	----

Refractometers

Abbe.....	28
Calibration Services.....	31
Digital, Portable.....	29
Handheld.....	30
Parts & Accessories.....	31

PORCELAIN

Crucibles & Covers.....	27
Dishes, Evaporating.....	27
Funnels, Buchner.....	27
Mortar & Pestles.....	27
Spot Plates.....	27

THERMOMETERS

Armor/Cases.....	34-35
Calibration Services.....	35
Dial.....	32
Digital.....	33
General Laboratory.....	33
Maximum-Minimum.....	33
Serialized, Precision.....	34
Serialized Encapsulated.....	34
Wall.....	35

GENERAL EQUIPMENT

Burners.....	6
Buret Clamps.....	5
Counters.....	6
Pipet Pump.....	10
Buret/Retort Stand.....	5

Featured Products



Glassware Kits



Five new Glassware Kits for Education, Sampling or General Purpose

- 5 Piece VEE GEE® Beaker Kit, Page 5
- 3 Piece VEE GEE® Erlenmeyer Flask Kit, Page 7
- 4 Piece SIBATA® Clear Volumetric Flask Kit, Page 8
- 4 Piece SIBATA® Class A Graduated Cylinder Kit, Page 6
- 4 Piece SIBATA® Student Grade Graduated Cylinder Kit, Page 6



New 1300-Series Stereo Microscope Lineup

Eight New VanGuard® Stereo Microscopes with improved features, modernized base designs and overall performance upgrades.

- 1300SL-Series Stereo Microscopes with Dual Magnification
- 1300ZL-Series Zoom, & 1300ZP-Series Non Illuminated Stereo Microscopes
- Modernized Designs and Bases
- Larger Footprint for Maximum Stability
- Improved Performance and Controls
- See Page 19 for Details

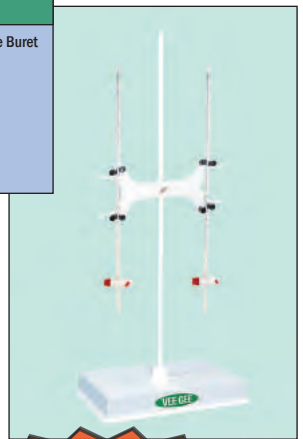


Buret Kit



Three kits with a Buret Retort Stand, Our White Double Buret Clamp and Two Burets in three sizes available:

- 10mL
- 25mL
- 50mL
- See Bottom of Page 5



Application Kits



See All on Page 4
We have taken a variety of our most useful test equipment and put them into Kits specifically for the following applications:

- Wine Making: Standard and Advanced Kit
- Beer Making: For the Homebrew Starter
- Soil Testing: For Forestry and Agriculture
- Waste Water: Standard Waste Water Testing
- Aquaculture: Standard and Advanced Kits
- Automotive: Battery Acid and Coolant



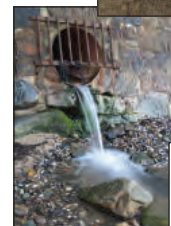
Beer



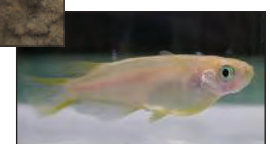
Wine



Soil



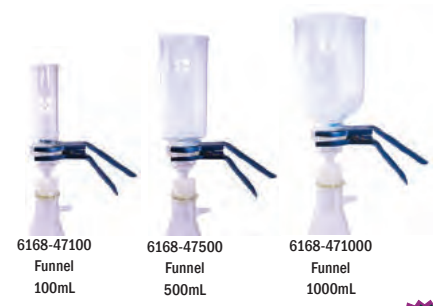
Wastewater



Aquaculture



Automotive



6168-47100
Funnel
100mL

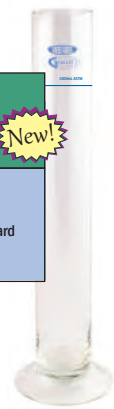
6168-47500
Funnel
500mL

6168-471000
Funnel
1000mL

Hydrometer Jar w/Graduation Line



Cat. No. 21000-1000-L
• 1000mL with ASTM calibrated Graduation Line
• For Soil Testing and Applications Requiring this Standard
• See Bottom of Page 16 for Details



Three new SIBATA® Filter Holder Sizes & 2000mL Filtering Flask

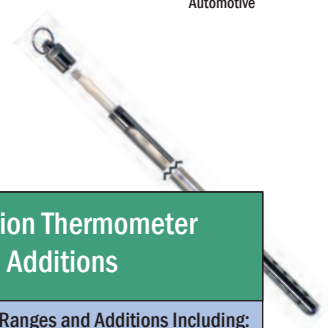


- 6168-Series
- Three new Kit Sizes for the 100, 500 & 1000mL Funnels
 - Individual Funnels available
 - 2000mL Filter Flask with #9 Silicone Stopper to interface with the Filter Holder Assembly



Precision Thermometer Additions

- Several New Ranges and Additions Including:
- Extra Long: 15.375" Encapsulated, Armored Addition
Excellent for Food and Beverage Testing
 - See page 34



VEE GEE® Application Kits



Wine/Beer Making Test Kits

VEE GEE® Quality Products specifically suited for Wine Making and Beer Brewing

Kit 1: Standard Wine: 2- BRIX Hydrometers, 1- BTX-1 Handheld Refractometer, 1- 1000mL Hydrometer Jar, 1- 15 1/2" Long, Armored, Encapsulated Thermometer
 Kit 2: Standard Beer: 2- Specific Gravity Hydrometers, 1- BTX-1 Handheld Refractometer, 1- 1000mL Hydrometer Jar, 1- 15 1/2" Long, Armored, Encapsulated Thermometer
 Kit 3: Advanced Wine: 2- BRIX Hydrometers, 1- MDX-401 Digital Refractometer, 1- 1000mL Hydrometer Jar, 1- 12" Long, Digital Thermometer

Cat. No.	Description	Cat. No. Kit Components	List Price (Each)
404AK-101	Kit 1: Standard Wine	6601-10, 6601TS-13, 43002, 21000-1000, 80904E-A	230.00
404AK-102	Kit 2: Standard Beer	6602TS-7, 6602TS-8, 43002, 21000-1000, 80904E-A	240.00
404AK-103	Kit 3: Advanced Wine	6601-10, 6601TS-13, 48401, 21000-1000, 83210-12	425.00

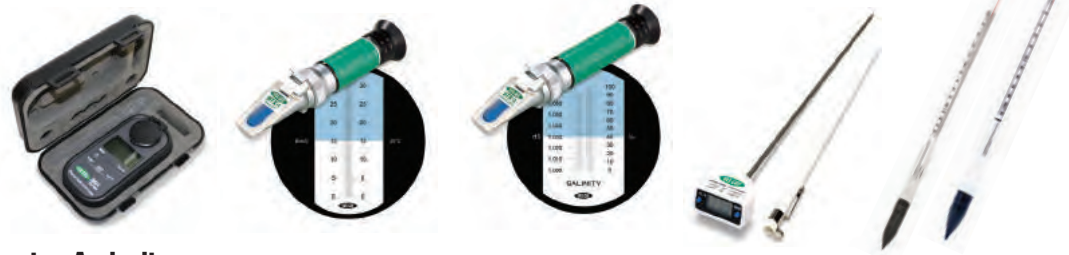


Water Testing, Waste and Aquaculture

VEE GEE® Quality Products specifically suited for Testing Water

Kit 1: Standard Wastewater: 2- Sodium Chloride and Specific Gravity Hydrometers, 1- BTX-1 Handheld Refractometer, 1- 1000mL Hydrometer Jar, One 12" Long, Digital Thermometer
 Kit 2: Standard Aquaculture: 2- Sodium Chloride and Specific Gravity Hydrometers, 1- STX-3 Handheld Refractometer, 1- 1000mL Hydrometer Jar, One 12" Long, Digital Thermometer
 Kit 3: Advanced Aquaculture: 2- Sodium Chloride and Specific Gravity Hydrometers, 1- MDX-202 Digital Refractometer, 1- 1000mL Hydrometer Jar, One 12" Long Digital Thermometer

Cat. No.	Description	Cat. No. Kit Components	List Price (Each)
404AK-201	Kit 1: Standard Wastewater Kit	6611-1, 6603-1, 43002, 21000-1000, 83210-12	170.00
404AK-202	Kit 2: Standard Aqua-Culture Kit	6611-1, 6603-1, 43036, 21000-1000, 83210-12	170.00
404AK-203	Kit 3: Advanced Aqua Culture Kit	6611-1, 6603-1, 48202, 21000-1000, 83210-12	375.00



Soil, Water Testing, Forestry, Agriculture

VEE GEE® Quality Products specifically suited for Testing Soil & Water

Kit 1: Standard Soil: 2- Soil Analysis & Specific Gravity Hydrometers, 1- 1000mL Hydrometer Jar with ASTM Graduated Line, 1- STX-3 Handheld Refractometer, 1- 3" Dial, Thermometer, 6" Stem
 Kit 2: Advanced Soil: 2- Soil Analysis & Specific Gravity Hydrometers, 1- 1000mL Hydrometer Jar with ASTM Graduated Line, 1- MDX-202 Digital Refractometer, 1- 3" Dial, Thermometer, 6" Stem

Cat. No.	Description	Cat. No. Kit Components	List Price (Each)
404AK-301	Kit 1: Standard Soil Kit	67151H, 6602-7, 43036, 21000-1000-L, 82160-6	178.00
404AK-302	Kit 2: Advanced Soil Kit	67151H, 6602-7, 48202, 21000-1000-L, 82160-6	380.00



Automotive Testing, Battery Acid, Antifreeze/Coolant

VEE GEE® Quality Products specifically suited for Automotive Testing

Kit 1: Standard Automotive: 1 - Battery Acid Testing, Specific Gravity Hydrometer Syphon Set, 1- CTX-1 Handheld Refractometer for °C, 1- Min Max Digital Thermo-Hygrometer Clock
 Kit 2: Standard Automotive: 1 - Battery Acid Testing, Specific Gravity Hydrometer Syphon Set, 1- CTX-2 Handheld Refractometer for °F, 1- Min Max Digital Thermo-Hygrometer Clock
 Kit 3: Advanced Automotive: 1 - Battery Acid Testing, Specific Gravity Hydrometer Syphon Set, 1- MDX-603(°C & °F) Digital Refractometer, 1- Min Max Digital Thermo-Hygrometer Clock

Cat. No.	Description	Cat. No. Kit Components	List Price (Each)
404AK-401	Kit 1: Automotive testing Kit for °C	6605-5, 43062 °C, 84004	176.00
404AK-402	Kit 2: Automotive testing Kit for °F	6605-5, 43062 °F, 84004	176.00
404AK-403	Kit 3: Advanced Automotive Testing (°C & °F)	6605-5, 48603, 84004	440.00



VEE GEE
Laboratory Glassware

Glassware



Lines

Beakers

VEE GEE®, Griffin, Low-Form, Double Scale, Graduated, Manufactured From Borosilicate Tubing

Cat. No.	Capacity (mL)	Pack Qty.	Case Qty.	List Price (Pack)	List Price (Case)
20229-10	10	12	48	17.40	63.36
20229-20	20	12	48	22.32	81.12
20229-30	30	12	48	23.64	85.92
20229-50	50	12	48	29.04	105.60
20229-100	100	12	48	31.68	115.20
20229-150	150	12	48	36.48	132.48
20229-250	250	12	48	33.00	120.00
20229-400	400	12	48	41.76	151.68
20229-600	600	6	36	24.78	135.00
20229-1000	1000	6	24	56.76	206.40
20229-2000	2000	4	8	79.20	144.00
20229-3000	3000	1	6	39.60	216.00
Variety Kit					
202GK-002	1 Each: 50, 100, 250, 600 & 1000	5	N/A	19.99	N/A



Beaker Kit

Burets, Class A

VEE GEE®, Made from Borosilicate Tubing, w/ PTFE Stopcock

Cat. No.	Capacity (mL)	Pack Qty.	Case Qty.	List Price (Pack)	List Price (Case)
20114-10	10	1	24	32.18	702.00
20114-25	25	1	24	32.18	702.00
20114-50	50	1	24	35.20	768.00
20114-100	100	1	24	41.25	900.00



Buret Clamps, Double

VEE GEE®, Fits Micro to 100ml

Cat. No.	Finish	List Price (Each)
3020	Chrome	28.00
3021	White	9.50



Buret/Retort Stand

VEE GEE®, Non-corrosive polystyrene base with polypropylene covered metallic rod threads into base. (5.5lbs.)

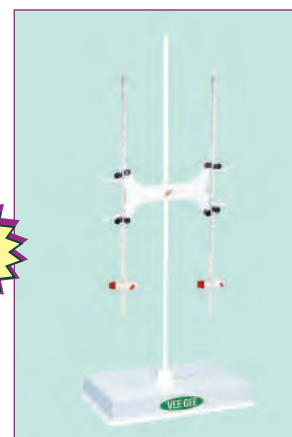
Cat. No.	Dimensions Base / Rod (mm)	Type	List Price (Each)
20117	300 X 200 12.5 X 750	Center Hold	25.00



Buret Kits

VEE GEE®, One Buret Retort Stand, Two 10, 25 or 50mL Class A Burets, One White Double Buret Clamp

Cat. No.	Cat. No. Kit Components	List Price (Each)
Kit1	Two 20114-10, One 20117, & One 3021	85.00
Kit2	Two 20114-25, One 20117, & One 3021	85.00
Kit3	Two 20114-50, One 20117, & One 3021	85.00



Buret Kit



Burners, Alcohol

VEE GEE®, Glass, Metal Cap, for Denatured Alcohol

Cat. No.	Capacity (mL)	Pack Qty.	Case Qty.	List Price (Pack)	List Price (Case)
3040	150	12	72	102.00	612.00

Burners, Alcohol, Replacement Wicks

VEE GEE®, Fits 3040 Alcohol Burners

Cat. No.	Pack Qty.	List Price (Pack)
3040-W	10	3.00

Counters, Hand Tally

VEE GEE®, 0-9999

Cat. No.	List Price (Each)
3509	13.75



Crucibles, Gooch, Glass

Sibata, High-Form, w/ Fritted Disc

Cat. No.	Capacity (mL)	Pore Size (µm)	Porosity	Type	Pack Qty.	List Price (Pack)
1305-1250A	30	250	Extra Coarse	1G	3	50.40
1305-1100A	30	100	Coarse	1G	3	50.40
1305-140A	30	40	Partly Coarse	1G	3	50.40
1305-116A	30	16	Medium	1G	3	50.40
1305-15A	30	5.5	Fine	1G	3	154.50
1305-2250A	50	250	Extra Coarse	2G	3	60.75
1305-2160A	50	160	Semiextra Coarse	2G	3	60.75
1305-2100A	50	100	Coarse	2G	3	60.75
1305-240A	50	40	Partly Coarse	2G	3	60.75
1305-216A	50	16	Medium	2G	3	60.75
1305-25A	50	5.5	Fine	2G	3	184.50



Cylinders, Graduated, Class A

Sibata, Double Metric Scale*, To Contain

Cat. No.	Capacity (mL)	Pack Qty.	Case Qty.	List Price (Pack)	List Price (Case)
2351A-5	5	4	48	29.48	321.60
2351A-10	10	4	48	29.48	321.60
2351A-25	25	4	48	40.36	440.16
2351A-50	50	4	48	43.96	479.52
2351A-100	100	4	48	46.00	501.60
2351A-250	250	4	24	64.80	353.52
2351A-500	500	2	12	59.16	322.68
2351A-1000	1000	2	8	104.24	379.04
2351A-2000	2000	1	6	78.12	426.12
Variety Kit 202GK-006	1 Each: 10, 25, 50 & 100	4	N/A	32.50	N/A



Class A Grad. Cylinder Kit



*Except 5, 10, and 25mL sizes.

NOTE: Bumper guard not included with 2000mL size.

Cylinders, Graduated, Class B

Sibata, Double Metric Scale*, To Contain

Cat. No.	Capacity (mL)	Pack Qty.	Case Qty.	List Price (Pack)	List Price (Case)
2351-10	10	4	48	28.56	311.52
2351-25	25	4	48	39.20	427.68
2351-50	50	4	48	43.08	469.92
2351-100	100	4	48	45.12	492.00
2351-250	250	4	24	63.44	346.08
2351-500	500	2	12	56.88	310.20
2351-1000	1000	2	8	96.98	352.64
2351-2000	2000	1	6	73.08	398.64

*Except 10 and 25mL sizes.

NOTE: Bumper guard not included with 2000mL size.

Cylinders, Graduated, Student

Sibata, Plastic Hexagonal Base, Double Metric Scale*, To Contain

Cat. No.	Capacity (mL)	Pack Qty.	Case Qty.	List Price (Pack)	List Price (Case)
2355-10	10	6	24	23.10	84.00
2355-25	25	6	24	25.50	92.64
2355-50	50	6	24	35.40	128.64
2355-100	100	6	24	43.14	156.96
Variety Kit 202GK-005	1 Each: 10, 25, 50, & 100	4	N/A	15.50	N/A

*Except 10 and 25mL sizes.



Student Grad. Cylinder Kit



Prices subject to change.



Filter Holders

Sibata, Glass Microanalysis

Kits with Fritted Glass for General & Biological Applications: 6168-0001 (300mL), 6168-0003 (100mL), 6168-005 (500mL), 6168-007, (1000mL)

Kits with Stainless Steel Screen for Ultraclean Filtrate & Proteinaceous Solutions: 6168-0002 (300mL), 6168-0004 (100mL), 6168-006 (500mL), 6168-007 (1000mL)

Cat. No.	Description	Pack Qty.	List Price (Pack)
6168-0001	Filter System, Fritted Glass (General & Biological Applications) 300mL Funnel	1	144.45
6168-0002	Filter System, Stainless Steel Screen (Ultraclean Filtrate & Proteinaceous Solutions) 300mL Funnel	1	186.80
6168-0003	Filter System, Fritted Glass (General & Biological Applications) 100mL Funnel	1	142.45
6168-0004	Filter System, Stainless Steel Screen (Ultraclean Filtrate & Proteinaceous Solutions) 100mL Funnel	1	184.80
6168-0005	Filter System, Fritted Glass (General & Biological Applications) 500mL Funnel	1	158.45
6168-0006	Filter System, Stainless Steel Screen (Ultraclean Filtrate & Proteinaceous Solutions) 500mL Funnel	1	200.80
6168-0007	Filter System, Fritted Glass (General & Biological Applications) 1000mL Funnel	1	195.45
6168-0008	Filter System, Stainless Steel Screen (Ultraclean Filtrate & Proteinaceous Solutions) 1000mL Funnel	1	237.80
6168-47100	Funnel, 100mL	1	57.00
6168-4711	Funnel, 300mL	1	59.00
6168-47500	Funnel, 500mL	1	73.00
6168-471000	Funnel, 1000mL	1	110.00
6168-4721	Glass Support Base, for Stainless Steel Screen	1	33.65
6168-4722	Glass Support Base, Fritted	1	45.30
6168-4731	Stainless Steel Screen	1	43.80
6168-4741	PTFE Gasket	10	10.20
6168-4751	No. 8 Silicone Stopper	1	11.25
6168-4752	No. 9 Silicone Stopper To interface with 2000mL Filter Flask (Cat No. 20074-2000)	1	12.00
6168-4762	Aluminum Clamp, Anodized, 47mm I.D.	1	28.90



3 Funnel Size Additions



6168-47100 Funnel 100mL
6168-4711 Funnel 300mL
6168-47500 Funnel 500mL
6168-471000 Funnel 1000mL



6168-4762 Aluminum Clamp Anodized



6168-4731 Stainless Steel Screen



6168-4741 PTFE Gaskets (10pk)



6168-4721 Glass Support Base



6168-4751 (#8) Silicone Stopper



6168-4722 Fritted Glass Support Base

Flasks, Erlenmeyer

VEE GEE®, Narrow Mouth, Heavy-Duty Rim, Graduated, Made from Borosilicate Tubing

Cat. No.	Capacity (mL)	Pack Qty.	Case Qty.	List Price (Pack)	List Price (Case)
20231-25	25	12	48	26.40	96.00
20231-50	50	12	48	30.36	110.40
20231-125	125	12	48	42.24	153.60
20231-250	250	12	48	52.20	189.60
20231-500	500	6	36	40.26	219.60
20231-1000	1000	6	24	68.34	248.40
20231-2000	2000	1	8	22.83	166.00
Variety Kit					
202GK-003	1 Each: 125, 250, & 500	3	N/A	14.99	N/A



Erlenmeyer 3 Piece Kit

Flasks, Erlenmeyer, Wide Mouth

VEE GEE®, Wide Mouth, Heavy-Duty Rim, Graduated, Made from Borosilicate Tubing

Cat. No.	Capacity (mL)	Pack Qty.	Case Qty.	List Price (Pack)	List Price (Case)
20232-125	125	12	48	42.24	153.60
20232-250	250	12	48	52.20	189.60
20232-500	500	6	36	40.26	219.60
20232-1000	1000	6	24	68.34	248.40
20232-2000	2000	1	8	22.83	166.00



Flasks, Filtering

VEE GEE®, Heavy Wall, Tubulation, Made from Borosilicate Tubing

Cat. No.	Capacity (mL)	Graduations	Pack Qty.	Case Qty.	List Price (Pack)	List Price (Case)
20074-250	250	Yes	6	18	94.08	256.50
20074-500	500	Yes	6	18	118.80	324.00
20074-1000	1000	Yes	6	12	173.58	315.60
20074-2000	2000	Yes	1	8	55.33	402.40



2000mL Size Addition



Flasks, Volumetric, Snap Cap, Class A

Sibata, To Contain

Cat. No.	Capacity (mL)	Pack Qty.	Case Qty.	List Price (Pack)	List Price (Case)
2303A-5	5	6	72	48.54	529.20
2303A-10	10	6	72	48.54	529.20
2303A-25	25	6	72	56.76	619.20
2303A-50	50	4	48	39.16	427.20
2303A-100	100	4	48	41.52	453.12
2303A-200	200	4	24	55.44	302.40
2303A-250	250	4	24	59.88	326.64
2303A-500	500	2	12	39.60	216.00
2303A-1000	1000	2	8	56.32	204.80

Flasks, Volumetric, Ground Glass Stopper, Class A

Sibata, Standard Taper, To Contain

Cat. No.	Capacity (mL)	Pack Qty.	Case Qty.	List Price (Pack)	List Price (Case)
2306A-1 (Micro)	1	6	96	79.14	1,151.04
2306A-2 (Micro)	2	6	96	79.14	1,151.04
2306A-5	5	6	72	74.58	813.60
2306A-10	10	6	72	74.58	813.60
2306A-25	25	6	72	79.56	867.60
2306A-50	50	4	48	55.00	600.00
2306A-100	100	4	48	58.16	634.56
2306A-200	200	4	24	78.76	429.60
2306A-250	250	4	24	88.00	480.00
2306A-500	500	2	12	51.04	278.40
2306A-1000	1000	2	8	69.96	254.40
2306A-2000	2000	2	8	124.74	453.60
Variety Kit					
202GK-004	1 Each: 10, 25, 50 & 100	4	N/A	41.50	N/A

Flasks, Volumetric, Ground Glass Stopper, Amber, Class A

Sibata, Standard Taper, To Contain

Cat. No.	Capacity (mL)	Pack Qty.	Case Qty.	List Price (Pack)	List Price (Case)
2307A-10	10	6	72	73.02	796.32
2307A-20	20	6	72	93.06	1,015.20
2307A-25	25	6	72	93.06	1,015.20
2307A-50	50	4	48	67.56	736.80
2307A-100	100	4	48	76.60	835.68
2307A-200	200	4	24	160.56	875.76
2307A-250	250	4	24	184.36	1,005.60
2307A-500	500	2	12	125.40	684.00
2307A-1000	1000	2	8	189.20	688.00

Flasks, Stoppers, Ground Glass

Sibata, Standard Taper

Cat. No.	Standard Taper Stopper No.	Color	Fits 2306A & 2307A Size	Pack Qty.	List Price (Pack)
03081	9	Clear	5, 10, 25mL	6	18.00
03082	13	Clear	50, 100mL	6	18.00
03083	16	Clear	200, 250mL	6	23.70
03084	19	Clear	500mL	6	26.40
03085	22	Clear	1000mL	6	30.60
03087	27	Clear	2000mL	6	54.00
03081-A	9	Amber	10, 20, 25mL	6	29.40
03082-A	13	Amber	50, 100mL	6	30.00
03083-A	16	Amber	200mL	6	39.00
03084-A	19	Amber	500mL	6	42.00
03085-A	22	Amber	1000 mL	6	60.00

Flasks, Stoppers, Polyethylene

Sibata, Standard Taper

Cat. No.	Standard Taper Stopper No.	Fits 2306A & 2307A Size	Pack Qty.	List Price (Pack)
009	9	5, 10, 25mL	50	40.00
013	13	50, 100mL	50	50.00
016	16	200, 250mL	50	50.00
019	19	500mL	50	55.00
027	27	2000mL	50	55.00



New!

Volumetric Flask Kit



Funnels, Buchner, Glass

Sibata, w/ Fritted Disc

Cat. No.	Capacity (mL)	Pore Size (µm)	Porosity	Type	Pack Qty.	List Price (Pack)
1311-3250A	30	250	Extra Coarse	3G	3	64.20
1311-3100A	30	100	Coarse	3G	3	64.20
1311-340A	30	40	Partly Coarse	3G	3	64.20
1311-316A	30	16	Medium	3G	3	64.20
1311-35A	30	5.5	Fine	3G	3	154.50
1311-11250A	60	250	Extra Coarse	11G	3	76.50
1311-11100A	60	100	Coarse	11G	3	76.50
1311-1140A	60	40	Partly Coarse	11G	3	76.50
1311-1116A	60	16	Medium	11G	3	76.50
1311-115A	60	5.5	Fine	11G	3	169.50
1311-17250	140	250	Extra Coarse	17G	1	48.50
1311-17100	140	100	Coarse	17G	1	48.50
1311-1740	140	40	Partly Coarse	17G	1	48.50
1311-1716	140	16	Medium	17G	1	62.30
1311-175	140	5.5	Fine	17G	1	109.50



Funnels, Separatory, w/ Stopper

VEE GEE®, Squibb, Pear-Shaped, PTFE Stopcock

Cat. No.	Capacity (mL)	Stopper Type	Pack Qty.	Case Qty.	List Price (Pack)	List Price (Case)
20149-250	250	Polyethylene	1	24	31.35	684.00
20149-500	500	Polyethylene	1	24	36.30	792.00
20149-1000	1000	Polyethylene	1	12	46.20	504.00
20149-2000	2000	Polyethylene	1	9	71.50	585.00

NOTE: Beakers, Erlenmeyer Flasks, Separatory Funnels, and Filtering Flasks are assortable for the 16+ case discount.
20149-Series made from Borosilicate Tubing



Glassware Kit, Mini Gift Set

VEE GEE®, Erlenmeyer Flask, Narrow Mouth, Heavy-Duty Rim, Graduated, made from Borosilicate Tubing

VEE GEE®, Beaker, Griffin, Low-Form, Double Scale, Graduated, Manufactured From Borosilicate Tubing

Cat. No.	Capacity (mL)	Description	Pack Qty.	List Price (Pack)
202GK-001	20	Beaker	1 Each.	9.79
	25	Flask		



Media Bottles, Clear

VEE GEE®, made from Borosilicate Tubing, White Markings, Threaded Blue Plastic Caps (GL-45)

Cat. No.	Capacity (mL)	Pack Qty.	List Price (Pack)
20274-100	100	10	55.00
20274-250	250	10	67.50
20274-500	500	10	90.00
20274-1000	1000	10	122.50
20274-2000	2000	4	72.00



Media Bottles, Amber

VEE GEE®, made from Borosilicate Tubing, White Markings, Threaded Blue Plastic Caps (GL-45)

Cat. No.	Capacity (mL)	Pack Qty.	List Price (Pack)
20275-100	100	10	102.50
20275-250	250	10	145.00
20275-500	500	10	212.50
20275-1000	1000	10	305.00
20275-2000	2000	4	174.00





Pipets, Measuring, Mohr

Sibata, Reusable Glass, Measuring, Class A, Color Coded, w/Colored Markings, To Deliver, DRAIN OUT

Cat. No.	Capacity (mL)	Graduation Interval	Pack Qty.	Case Qty.	List Price (Pack)	List Price (Case)
2010A-01-c	0.1	0.01	12	72	57.24	312.48
2010A-02-c	0.2	0.01	12	72	56.16	306.00
2010A-1-c	1	0.01	12	72	35.64	194.40
2010A-1-d	1	0.1	12	72	35.64	194.40
2010A-2-d	2	0.1	12	72	35.64	194.40
2010A-5	5	0.1	12	72	41.40	226.08
2010A-10	10	0.1	12	72	43.68	238.32
2010A-25	25	0.1	12	72	122.64	668.88

Pipets, Serological

Sibata, Reusable Glass, Measuring, Class A, Color Coded, w/Colored Markings, To Deliver, BLOW OUT

Cat. No.	Capacity (mL)	Graduation Interval	Pack Qty.	Case Qty.	List Price (Pack)	List Price (Case)
2011A-01-c	0.1	0.01	12	72	57.24	312.48
2011A-02-c	0.2	0.01	12	72	56.16	306.00
2011A-1-c	1	0.01	12	72	35.64	194.40
2011A-1-d	1	0.1	12	72	35.64	194.40
2011A-2-d	2	0.1	12	72	35.64	194.40
2011A-5	5	0.1	12	72	41.40	226.08
2011A-10	10	0.1	12	72	43.68	238.32
2011A-25	25	0.1	12	72	122.64	668.88

Pipets, Serological, WideTip Opening

Sibata, Reusable Glass, Measuring

Cat. No.	Capacity (mL)	Hole mm	Graduated Interval	Length mm	Pack Qty.	Case Qty.	List Price (Pack)	List Price (Case)
20200-11A	1	1.5	0.2	350	12	72	59.40	324.00
20200-31A	3	2.0	0.5	350	12	72	66.00	360.00
20200-51A	5	2.0	0.5	350	12	72	68.64	374.40
20200-101A	10	3.0	0.5	350	12	72	73.32	399.60
20200-12A	1	1.5	0.2	205	10	90	46.20	378.00
20200-32A	3	2.0	0.5	205	10	90	51.70	423.00
20200-52A	5	2.0	0.5	205	10	60	55.60	303.00
20200-102A	10	3.0	0.2	205	10	120	57.80	630.00

Sibata, Measuring, Large Hole, Short Length

20210-52A	5	3.0	0.5	205	10	60	55.60	303.00
20210-102A	10	3.5	0.2	205	10	120	57.80	630.00

Sibata, Measuring, Graduated to Tip

20140-1A	1	1.2	0.01	360	12	72	59.40	324.00
20140-2A	2	1.2	0.02	360	12	72	66.00	360.00
20140-5A	5	1.2	0.05	366	12	72	68.64	374.40
20140-10A	10	1.4	1.00	366	12	72	73.32	399.60
20140-20A	20	1.5	1.00	435	12	72	97.68	532.80

Pipets, Volumetric

Sibata, Reusable Glass, Class A, Color Coded, w/Colored Markings, To Deliver

Cat. No.	Capacity (mL)	Pack Qty.	Case Qty.	List Price (Pack)	List Price (Case)
2040A-05	0.5	12	72	46.20	252.00
2040A-1	1	12	72	32.16	175.68
2040A-2	2	12	72	34.68	189.36
2040A-3	3	12	72	40.68	221.76
2040A-4	4	12	72	40.68	221.76
2040A-5	5	12	72	44.40	241.92
2040A-6	6	12	72	75.48	411.84
2040A-7	7	12	72	75.48	411.84
2040A-8	8	12	72	79.20	432.00
2040A-9	9	12	72	79.20	432.00
2040A-10	10	12	72	79.20	432.00
2040A-13	13	6	36	42.30	230.76
2040A-15	15	6	36	39.60	216.00
2040A-20	20	6	36	40.14	218.88
2040A-25	25	6	36	44.22	241.20
2040A-50	50	6	36	55.80	304.20
2040A-100	100	6	36	99.90	545.04

Pipets, Volumetric, Wide-Tip Opening

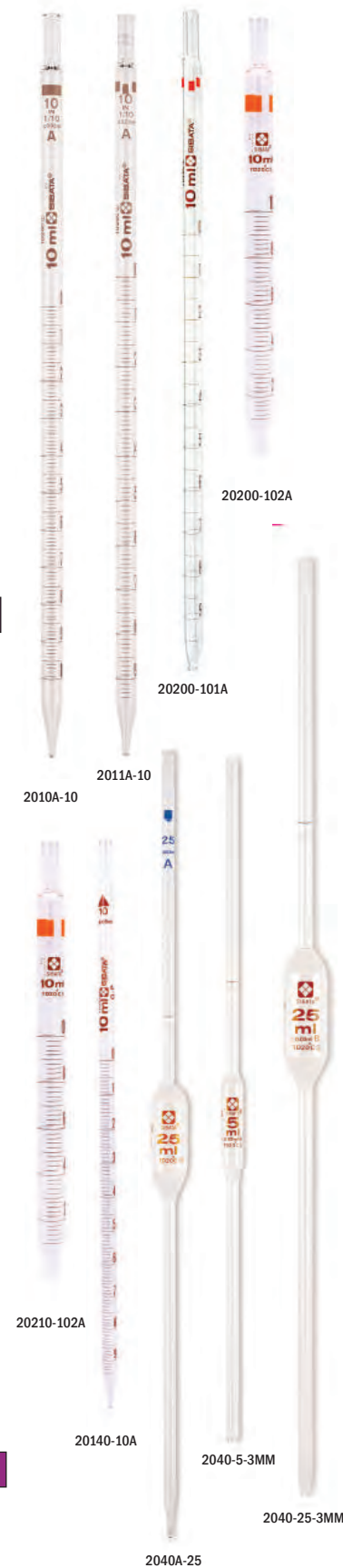
Sibata, Reusable Glass, Class B, To Deliver Sizes 1, 2 & 5mL do not have drawn tips, sizes 10mL through 100mL feature standard drawn tips.

Cat. No.	Capacity (mL)	Pack Qty.	Case Qty.	List Price (Pack)	List Price (Case)
2040-1-1.9MM	1	12	72	38.04	207.36
2040-2-2.4MM	2	12	72	39.72	216.72
2040-5-3MM	5	12	72	50.28	274.32
2040-10-3MM	10	12	72	84.48	460.80
2040-20-3MM	20	6	36	43.80	239.04
2040-25-3MM	25	6	36	49.62	270.72
2040-50-3MM	50	6	36	57.84	315.36
2040-100-3MM	100	6	36	108.12	589.68

Pipet Pump

VEE GEE®, Knurled thumbwheel rotates to draw up or dispense liquids, holds various pipette sizes.

Cat. No.	Capacity	List Price (Each)
20104-2	2 mL	10.95
20104-10	10 mL	10.95
20104-25	25mL	12.95



Hydrometers, Alcohol, Tralle & Proof Scales, (Alcometer)

VEE GEE®, Standard Temperature: 60°F, 6612-2TS w/ Thermometer (Safety Blue) Thermometer Scale: -10 to +100°F (Subdivision: 1°F)

Cat. No.	Tralle Range	Subdivision/Tolerance	Proof Range	Subdivision/Tolerance	Approx. Length (mm)	List Price (Each)
6612-1	0 to 100%	1% / ±1%	0-200%	2% / ±2%	305	23.25
6612-2TS	0 to 100%	1% / ±1%	0 to 200%	2% / ±2%	355	49.25

Hydrometers, Alcohol, Proof Scale, Internal Revenue Service Specifications

VEE GEE®, Standard Temperature: 60°F

Cat. No.	Proof Range	Internal Revenue Size	Subdivision/Tolerance	Approx. Length (mm)	List Price (Each)
6613-B	80 to 120%	B	0.5% / ±0.5%	230	52.25
6613-F	0 to 20%	F	0.2% / ±0.3%	305	52.25
6613-G	20 to 40%	G	0.2% / ±0.4%	305	52.25
6613-H	40 to 60%	H	0.2% / ±0.4%	305	52.25
6613-I	60 to 80%	I	0.2% / ±0.3%	305	52.25
6613-K	75 to 95%	K	0.2% / ±0.3%	305	52.25
6613-L	90 to 110%	L	0.2% / ±0.3%	305	52.25
6613-M	105 to 125%	M	0.2% / ±0.3%	305	52.25
6613-N	125 to 145%	N	0.2% / ±0.3%	305	52.25
6613-P	145 to 165%	P	0.2% / ±0.3%	305	52.25
6613-Q	165 to 185%	Q	0.2% / ±0.2%	305	52.25
6613-R	185 to 206%	R	0.2% / ±0.2%	305	52.25

Hydrometers, Alcohol, Proof Scale, IRS Specifications w/ NIST, 3 Point Certification

VEE GEE®, Standard Temperature: 60°F (10 day lead time)

Cat. No.	Proof Range	Internal Revenue Size	Subdivision/Tolerance	Approx. Length (mm)	List Price (Each)
6613-B-C	80 to 120%	B	0.5% / ±0.5%	230	342.00
6613-F-C	0 to 20%	F	0.2% / ±0.3%	305	342.00
6613-G-C	20 to 40%	G	0.2% / ±0.4%	305	342.00
6613-H-C	40 to 60%	H	0.2% / ±0.4%	305	342.00
6613-I-C	60 to 80%	I	0.2% / ±0.3%	305	342.00
6613-K-C	75 to 95%	K	0.2% / ±0.3%	305	342.00
6613-L-C	90 to 110%	L	0.2% / ±0.3%	305	342.00
6613-M-C	105 to 125%	M	0.2% / ±0.3%	305	342.00
6613-N-C	125 to 145%	N	0.2% / ±0.3%	305	342.00
6613-P-C	145 to 165%	P	0.2% / ±0.3%	305	342.00
6613-Q-C	165 to 185%	Q	0.2% / ±0.2%	305	342.00
6613-R-C	185 to 206%	R	0.2% / ±0.2%	305	342.00

Hydrometers, API, w/ Thermometer

VEE GEE®, Standard Temperature: 60°F, Accuracy: ±1 Subdivision, Thermometer Scale: +10 to +130°F (Subdivision: 2°F)

Cat. No.	API Range	Liquid Type	Subdivision	Approx. Length (mm)	List Price (Each)
6608-2TS	9-21°	Spirit	0.2°	195	48.00
6608-3TS	19-31°	Spirit	0.2°	195	48.00
6608-4TS	29 to 41°	Spirit	0.2°	195	48.00
6608-5TS	39 to 51°	Spirit	0.2°	195	48.00
6608-6TS	49 to 61°	Spirit	0.2°	195	48.00
6608-7TS	59-71°	Spirit	0.2°	195	48.00
6608-11TS	10 to 45°	Spirit	1.0°	195	48.00
6608-12TS	45 to 90°	Spirit	1.0°	195	48.00

Hydrometers, API, ASTM

VEE GEE®, Standard Temperature: 60°F, Accuracy: ±1 Subdivision

Cat. No.	ASTM No.	API Range	Subdivision	Approx. Length (mm)	List Price (Each)
6721H	21H	0 to 6°	0.1°	165	30.00
6722H	22H	5 to 11°	0.1°	165	30.00
6723H	23H	10 to 16°	0.1°	165	30.00
6724H	24H	15 to 21°	0.1°	165	30.00
6725H	25H	20 to 26°	0.1°	165	30.00
6726H	26H	25 to 31°	0.1°	165	30.00
6727H	27H	30 to 36°	0.1°	165	30.00
6728H	28H	35 to 41°	0.1°	165	30.00
6729H	29H	40 to 46°	0.1°	165	30.00
6730H	30H	45 to 51°	0.1°	165	30.00
6731H	31H	50 to 56°	0.1°	165	30.00
6732H	32H	55 to 61°	0.1°	165	30.00
6733H	33H	60 to 66°	0.1°	165	30.00
6734H	34H	65 to 71°	0.1°	165	30.00
6735H	35H	70 to 76°	0.1°	165	30.00
6736H	36H	75 to 81°	0.1°	165	30.00
6737H	37H	80 to 86°	0.1°	165	30.00
6738H	38H	85 to 91°	0.1°	165	30.00
6739H	39H	90 to 96°	0.1°	165	30.00



The API Scale was selected in 1921 by the American Petroleum Institute (API), the U.S. Bureau of Mines, and the National Institute of Standards and Technology (NIST) as the standard hydrometer scale for petroleum products. The API Scale is based on the following formula:

$$\text{API Scale} \quad \text{°API @ 60°F} = \left(\frac{141.5}{\text{Specific Gravity @ } \frac{60\text{°F}}{60\text{°F}}} \right) - 131.5$$

The thermometer scale for VEE GEE Hydrometers (w/ Thermometers) is located in the body. A correction scale for conversion of readings to 60°F is printed opposite the temperature scale. General Specifications for VEE GEE ASTM Hydrometers: Manufactured in strict accordance to specifications of ASTM (American Society for Testing and Materials) for accuracy and design. All instruments are suitable for certification for use as a primary reference standard with NIST traceability.



Hydrometers, API, w/ Thermometer (SafetyBLUE), ASTM

VEE GEE®, Standard Temperature: 60°F, Accuracy: ±1 Subdivision, Thermometer Scale: 0 to +150°F (Subdivision: 2°F)

Cat. No.	ASTM No.	API Range	Subdivision	Approx. Length (mm)	List Price (Each)
6751HTS	51H	-1 to 11°	0.1°	380	48.00
6752HTS	52H	9 to 21°	0.1°	380	48.00
6753HTS	53H	19 to 31°	0.1°	380	48.00
6754HTS	54H	29 to 41°	0.1°	380	48.00
6755HTS	55H	39 to 51°	0.1°	380	48.00
6756HTS	56H	49 to 61°	0.1°	380	48.00
6757HTS	57H	59 to 71°	0.1°	380	48.00
6758HTS	58H	69 to 81°	0.1°	380	48.00

Hydrometers, Plato, w/ Thermometer

VEE GEE®, Standard Temperature: 20°C, Accuracy: ±1 Subdivision

Thermometer Scale (6614TS-5/-6/-7): 0 to +50°C (Subdivision: 1°C), Thermometer Scale (6614TS-8): +30 to +120°F (Subdivision: 1°F)

Cat. No.	Plato Range	Liquid Type	Subdivision	Approx. Length (mm)	List Price (Each)
6614TS-5	0 to 8.5°	Spirit	0.1°	360	47.00
6614TS-6	7.5 to 16°	Spirit	0.1°	360	47.00
6614TS-7	15.5 to 24°	Spirit	0.1°	360	47.00
6614TS-8	0 to 32°	Spirit	0.5°	380	48.00

Hydrometers, Battery, Syphon Set

VEE GEE®, Standard Temperature: 77°F, Accuracy: ±1 Subdivision

VEE GEE®, Hydrometer, Glass Syphon glass tube w/ rubber bulb and nozzle with clamp.

Rubber parts made of Nitrile rubber, which is chemically inert with long life. (Comes in a storage box.)



Cat. No.	Specific Gravity Range	Description	Subdivision	Approx. Length (mm)	List Price (Each)
6605-5	1.150 to 1.300	Hydrometer and Syphon Set	0.002	507mm	85.00
6605-5H	1.150 to 1.300	Hydrometer Only	0.002	220 mm	52.00
6605-OSY	N/A	Glass Syphon, Rubber, Clamp Only	N/A	507 mm	37.00

Hydrometers, Baume (Heavy)

VEE GEE®, Standard Temperature: 60°F, Accuracy: ±1 Subdivision

Cat. No.	Baume Range	Subdivision	Approx. Length (mm)	List Price (Each)
6609-1	0 to 12°	0.1°	305	23.25
6609-2	9 to 21°	0.1°	305	23.25
6609-3	19 to 31°	0.1°	305	23.25
6609-4	29 to 41°	0.1°	305	23.25
6609-5	39 to 51°	0.1°	305	23.25
6609-6	49 to 61°	0.1°	305	23.25
6609-7	59 to 71°	0.1°	305	23.25
6609-8	0 to 15°	0.1°	305	23.25
6609-9	0 to 25°	0.2°	305	23.25
6609-10	0 to 35°	0.5°	305	23.25
6609-11	0 to 50°	0.5°	305	23.25
6609-12	35 to 70°	0.5°	305	23.25
6609-13	0 to 50°	1.0°	305	23.25
6609-14	0 to 70°	1.0°	305	23.25
6609-15	0 to 90°	1.0°	305	38.00

Hydrometers, Brix

VEE GEE®, Standard Temperature: 20°C, Accuracy: ±1 Subdivision

Cat. No.	Brix Range	Subdivision	Approx. Length (mm)	List Price (Each)
6601-1	0 to 12°	0.1°	330	27.20
6601-2	9 to 21°	0.1°	330	27.20
6601-3	19 to 31°	0.1°	330	27.20
6601-4	29 to 41°	0.1°	330	27.20
6601-5	39 to 51°	0.1°	330	27.20
6601-6	49 to 61°	0.1°	330	27.20
6601-7	59 to 71°	0.1°	330	27.20
6601-8	69 to 81°	0.1°	330	27.20
6601-9	79 to 91°	0.1°	330	27.20
6601-10	0 to 35°	0.5°	330	27.20
6601-11	35 to 70°	0.5°	330	27.20
6601-12	0 to 70°	1.0°	330	27.20
6601-13	-5 to 5°	0.1°	330	27.20
6601-14	5 to 15°	0.1°	330	27.20
6601-15	15 to 25°	0.1°	330	27.20



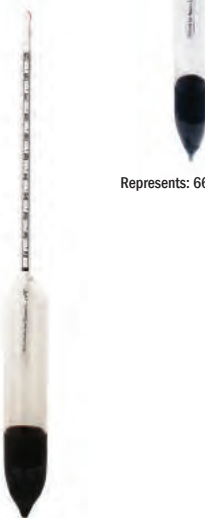
Represents: 6750HTS-Series



Represents: 6614TS-Series



6605-5



Represents: 6609-Series

Represents: 6601-Series

Hydrometers, Brix, w/ Thermometer (SafetyBLUE, °C)

VEE GEE®, Standard Temperature: 20°C, Accuracy: ±1 Subdivision, Thermometer Scale: 0 to +50°C (Subdivision: 1°C)

Cat. No.	Brix Range	Subdivision	Approx. Length (mm)	List Price (Each)
6601TS-1	0 to 12°	0.1°	370	47.00
6601TS-2	9 to 21°	0.1°	370	47.00
6601TS-3	19 to 31°	0.1°	370	47.00
6601TS-4	29 to 41°	0.1°	370	47.00
6601TS-5	39 to 51°	0.1°	370	47.00
6601TS-6	49 to 61°	0.1°	370	47.00
6601TS-7	59 to 71°	0.1°	370	47.00
6601TS-8	69 to 81°	0.1°	370	47.00
6601TS-9	79 to 91°	0.1°	370	47.00
6601TS-10	0 to 35°	0.5°	370	47.00
6601TS-11	35 to 70°	0.5°	370	47.00
6601TS-12	0 to 70°	0.5°	370	47.00
6601TS-13	-5 to 5°	0.1°	370	47.00
6601TS-14	5 to 15°	0.1°	370	47.00
6601TS-15	15 to 25°	0.1°	370	47.00



Represents: 6601TS-Series

Hydrometers, Brix, w/ Thermometer (SafetyBLUE, °F)

VEE GEE®, Standard Temperature: 68°F, Accuracy: ±1 Subdivision, Thermometer Scale: +30 to +130°F (Subdivision: 1°F)

Cat. No.	Brix Range	Subdivision	Approx. Length (mm)	List Price (Each)
6601TS-1F	0 to 12°	0.1°	370	47.00
6601TS-2F	9 to 21°	0.1°	370	47.00
6601TS-3F	19 to 31°	0.1°	370	47.00
6601TS-10F	0 to 35°	0.5°	370	47.00
6601TS-13F	-5 to 5°	0.1°	370	47.00

VEE GEE Brix Hydrometers are calibrated to show the percentage of sucrose by weight at 20°C. The Brix Scale is based on the following: The data of the National Bureau of Standards is used.

Brix Scale

1° Brix = 1% sucrose by weight at specified temperature (20°C).

The thermometer scale for VEE GEE Hydrometers (w/ Thermometers) is located in the body. The thermometers have a range of 0 to +50°C or +30 to 150°F with 1° subdivisions. A correction scale for conversion of readings to 20°C or 68°F is printed opposite the temperature scale.

Hydrometers, Calcium Chloride, Specific Gravity, Freezing Points

VEE GEE®, Standard Temperature: 60°F, Accuracy: ±1 Subdivision

Cat. No.	CaCl ₂ Range	Subdivision	Approx. Length (mm)	List Price (Each)
6611-3	1.000 to 1.280 (S.G) +30 to -40°F (F.P)	0.002 5°	305	23.25



6611-3

6611-1

6611-2

Hydrometers, Sodium Chloride, % Saturation

VEE GEE®, Standard Temperature: 60°F, Accuracy: ±1 Subdivision

Cat. No.	NaCl Range	Subdivision	Approx. Length (mm)	List Price (Each)
6611-1	0-100%	1.0%	305	23.25

Hydrometers, Sodium Chloride, % Weight

VEE GEE®, Standard Temperature: 60°F, Accuracy: ±1 Subdivision

Cat. No.	NaCl Range	Subdivision	Approx. Length (mm)	List Price (Each)
6611-2	0 to 26.5%	0.5%	305	23.25

Hydrometers, Specific Gravity

VEE GEE®, Standard Temperature: 60°F, Accuracy: ±1 Subdivision

Cat. No.	Specific Gravity Range	Subdivision	Approx. Length (mm)	Thermometer	List Price (Each)
6602-0	0.600 to 0.670	0.0005	330		27.25
6602-1	0.640 to 0.710	0.0005	330		27.25
6602-2	0.700 to 0.770	0.0005	330		27.25
6602-3	0.760 to 0.830	0.0005	330		27.25
6602-4	0.820 to 0.890	0.0005	330		27.25
6602-5	0.880 to 0.950	0.0005	330		27.25
6602-6	0.940 to 1.010	0.0005	330		27.25
6602-7	1.000 to 1.070	0.0005	330		27.25
6602-8	1.060 to 1.130	0.0005	330		27.25
6602-9	1.120 to 1.190	0.0005	330		27.25
6602-10	1.180 to 1.250	0.0005	330		27.25
6602-11	1.240 to 1.310	0.0005	330		28.50
6602-12	1.300 to 1.370	0.0005	330		28.50
6602-13	1.360 to 1.430	0.0005	330		28.50
6602-14	1.420 to 1.490	0.0005	330		31.00
6602-15	1.480 to 1.550	0.0005	330		31.00
6602-16	1.540 to 1.610	0.0005	330		31.00
6602-17	1.600 to 1.670	0.0005	330		31.00
6602-18	1.660 to 1.730	0.0005	330		31.00
6602-19	1.720 to 1.790	0.0005	330		31.00
6602-20	1.780 to 1.850	0.0005	330		31.00
6602-21	1.840 to 1.920	0.0005	330		31.00
6602-4S	0.820 to 0.890	0.001	165		27.25
6602-5S	0.880 to 0.950	0.001	165		27.25
6602-6S	0.940 to 1.010	0.001	165		27.25
6602-7S	1.000 to 1.070	0.001	165		27.25
6602-8S	1.060 to 1.130	0.001	165		27.25
6602-9S	1.120 to 1.190	0.001	165		27.25
6602-10S	1.180 to 1.250	0.001	165		27.25
6602TS-7	1.000 to 1.070	0.001	385	20 to 150°F	47.00
6602TS-8	1.060 to 1.130	0.001	385	20 to 150°F	47.00



Represents: 6602TS-Series (Beer Making)

Represents: 6602-Series

Hydrometers, Specific Gravity

VEE GEE®, Standard Temperature: 60°F, Accuracy: ±1 Subdivision

Cat. No.	Specific Gravity Range	Subdivision	Approx. Length (mm)	Thermometer Range	List Price (Each)
6603-1	1.000 to 1.220	0.002	305		23.25
6603TS-1	1.000 to 1.220	0.002	305	0°F to 150°F	48.00
6603-2	1.200 to 1.420	0.002	305		23.25
6603-3	1.400 to 1.620	0.002	305		23.25
6603-4	1.600 to 1.820	0.002	305		23.25
6603-5	1.800 to 2.020	0.002	305		23.25
6603-6	1.000 to 1.600	0.005	305		23.25
6603-7	1.000 to 2.000	0.010	305		21.50
6603-8	2.000 to 3.000	0.010	305		44.75
6603-9	3.000 to 4.000	0.010	305		44.75
6603-10	0.700 to 0.810	0.001	305		23.25
6603-11	0.800 to 0.910	0.001	305		23.25
6603-12	0.900 to 1.000	0.001	305		23.25
6603-13	0.650 to 1.000	0.005	305		21.50

Represents: 6603-Series

Hydrometers, Liquid Petroleum Gas (LPG), Specific Gravity, w/ Thermometer (SafetyBLUE)

VEE GEE®, Standard Temperature: 60°F, Accuracy: ±1 Subdivision, Thermometer Scale: +30 to +90°F (Subdivision: 1°F)

Cat. No.	Specific Gravity Range	Subdivision	Approx. Length (mm)	List Price (Each)
67101HTS	0.500 to 0.650	0.001	365	55.75

67101HTS

Hydrometers, Specific Gravity & Baume, Dual Scale

VEE GEE®, Standard Temperature: 60°F, Accuracy: ±1 Subdivision

Cat. No.	Specific Gravity Range	Baume Range	Subdivision	Approx. Length (mm)	List Price (Each)
6603DS-1	1.000 to 1.220	0 to 26° (Heavy)	0.002 / 0.2°	305	23.25
6603DS-1S	1.000 to 1.225	0 to 26° (Heavy)	0.005	165	23.25
6603DS-2	1.200 to 1.420	24 to 42° (Heavy)	0.002 / 0.2°	305	23.25
6603DS-2S	1.200 to 1.425	24 to 42° (Heavy)	0.005	165	23.25
6603DS-3	1.400 to 1.620	42 to 55° (Heavy)	0.002 / 0.2°	305	23.25
6603DS-4	1.600 to 1.820	42 to 55° (Heavy)	0.002 / 0.2°	305	23.25
6603DS-5	1.800 to 2.020	64 to 72° (Heavy)	0.002 / 0.2°	305	23.25
6603DS-6	1.000 to 1.450	0 to 45° (Heavy)	0.005 / 0.5°	305	23.25
6603DS-6S	1.000 to 1.400	0 to 41° (Heavy)	0.01	165	23.25
6603DS-7	1.000 to 2.000	0 to 72° (Heavy)	0.010 / 1.0°	305	21.50
6603DS-13	0.600 to 1.000	10 to 100° (Light)	0.005 / 1.0°	305	23.25

Represents: 6603DS-Series



Hydrometers, Specific Gravity

VEE GEE®, Standard Temperature: 60°F, Accuracy: ±1 Subdivision

Cat. No.	Specific Gravity Range	Subdivision	Approx. Length (mm)	List Price (Each)
6604-1	1.000 to 1.250	0.005	165	23.25
6604-2	1.200 to 1.450	0.005	165	23.25
6604-3	1.400 to 1.650	0.005	165	23.25
6604-4	1.600 to 1.850	0.005	165	23.25
6604-5	1.800 to 2.050	0.005	165	23.25
6604DS-04*	0.70 to 1.00/70 to 10	0.01	165	23.25

* 6604DS has Dual Scale, Specific Gravity and Baume Range

Hydrometers, Specific Gravity, ASTM

VEE GEE®, Standard Temperature: 60°F, Accuracy: ±1 Subdivision

Cat. No.	ASTM No.	Specific Gravity Range	Subdivision	Approx. Length (mm)	List Price (Each)
6782H	82H	0.650 to 0.700	0.0005	330	29.75
6783H	83H	0.700 to 0.750	0.0005	330	29.75
6784H	84H	0.750 to 0.800	0.0005	330	29.75
6785H	85H	0.800 to 0.850	0.0005	330	29.75
6786H	86H	0.850 to 0.900	0.0005	330	29.75
6787H	87H	0.900 to 0.950	0.0005	330	29.75
6788H	88H	0.950 to 1.000	0.0005	330	29.75
6789H	89H	1.000 to 1.050	0.0005	330	29.75
6790H	90H	1.050 to 1.100	0.0005	330	29.75
67111H	111H	1.000 to 1.050	0.0005	330	29.75
67112H	112H	1.050 to 1.100	0.0005	330	29.75
67113H	113H	1.100 to 1.150	0.0005	330	29.75
67114H	114H	1.150 to 1.200	0.0005	330	29.75
67115H	115H	1.200 to 1.250	0.0005	330	29.75
67116H	116H	1.250 to 1.300	0.0005	330	29.75
67117H	117H	1.300 to 1.350	0.0005	330	29.75
67118H	118H	1.350 to 1.400	0.0005	330	29.75
67119H	119H	1.400 to 1.450	0.0005	330	29.75
67120H	120H	1.450 to 1.500	0.0005	330	29.75
67125H	125H	1.000 to 1.050	0.001	260	27.25
67126H	126H	1.050 to 1.100	0.001	260	27.25
67127H	127H	1.100 to 1.150	0.001	260	27.25
67128H	128H	1.150 to 1.200	0.001	260	27.25
67129H	129H	1.200 to 1.250	0.001	260	27.25
67130H	130H	1.250 to 1.300	0.001	260	27.25
67131H	131H	1.300 to 1.350	0.001	260	27.25
67132H	132H	1.350 to 1.400	0.001	260	27.25
67133H	133H	1.400 to 1.450	0.001	260	28.75
67134H	134H	1.450 to 1.500	0.001	260	28.75
67135H	135H	1.500 to 1.550	0.001	260	28.75
67136H	136H	1.550 to 1.600	0.001	260	28.75
67137H	137H	1.600 to 1.650	0.001	260	28.75
67138H	138H	1.650 to 1.700	0.001	260	28.75
67139H	139H	1.700 to 1.750	0.001	260	28.75
67140H	140H	1.750 to 1.800	0.001	260	28.75
67141H	141H	1.800 to 1.850	0.001	260	28.75



Represents: 6604-Series



6782H

Specific Gravity, also known as relative density, is the ratio of the mass of a solid or liquid to the mass of an equal volume of distilled water. The standard temperature of calibration in the U.S. is 60°F/60°F. All VEE GEE Specific Gravity Hydrometers listed are calibrated at 60°F/60°F.

Specific Gravity Scale

$$\text{Specific Gravity} = \frac{\text{Mass of X @ 60°F}}{\text{Mass of Distilled Water @ 60°F}}$$

The thermometer scale for VEE GEE Hydrometers (w/ Thermometers) is located in the body. A correction scale for conversion of readings to 60°F is printed opposite the temperature scale. General Specifications for VEE GEE ASTM Hydrometers: Manufactured in strict accordance to specifications of ASTM (American Society for Testing and Materials) for accuracy and design. All instruments are suitable for certification for use as a primary reference standard with NIST traceability.

Hydrometers, Specific Gravity, Universal

VEE GEE®, Standard Temperature: 60°F, Accuracy: ±1 Subdivision

Cat. No.	Specific Gravity Range	Subdivision (0.7 to 1.0)	Subdivision (1.0 to 2.0)	Baume Range	Subdivision (1.0)	Approx. Length (mm)	List Price (Each)
6605-1	0.700 to 2.000	0.005	0.01	0 to 72 High 70 to 10 Low	1.0	380	34.50

Hydrometers, Specific Gravity, Soil Analysis, ASTM

VEE GEE®, Standard Temperature: 68°F, Accuracy: ±1 Subdivision

Cat. No.	ASTM No.	Specific Gravity Range	Subdivision	Approx. Length (mm)	List Price (Each)
67151H	151H	0.995 to 1.038	0.001	280	41.75

Hydrometers, Soil Colloids (g), Soil Analysis, ASTM

VEE GEE®, Standard Temperature: 68°F, Accuracy: ±1 Subdivision

Cat. No.	ASTM No.	Soil Colloids	Subdivision	Approx. Length (mm)	List Price (Each)
67152H	152H	-5 to 60g	1.0	280	41.75



6605-1

67152H

Prices subject to change.



Hydrometer Cases

VEE GEE®, w/ Cap & Internal Padding

Cat. No.	Description	Length (mm / in)	List Price (Each)
66CS-8	Case/PVC	216 / 8.5	26.50
66CS-8F	Case/PVC (Short)	165 / 6.5	27.50
66CS-13	Case/PVC	343 / 13.5	29.00
66CS-13J	Case/PVC (Wide Body)	343 / 13.5	29.00
66CS-16	Case/PVC	420 / 16.5	32.00

NOTE: All Hydrometer Cases are assortable for the 10+ quantity discount. Custom sizes available; please contact us for details.

Case	Internal Dimension
66CS-8	210mm max
66CS-8F	175mm (6604,672xH, 673xH & 165mm)
66CS-13	340mm max
66CS-13J	340mm max (67151H, 67152H, 6613-Series)
66CS-16	390mm max



Use the charts to help determine the correct case or jar size for the hydrometer!

Hydrometer Series	Description	Approx. Length (mm)	Uses Case	Uses Jar
6601-Series	Brix	330	66CS-13	21000-500
6601T-Series	Brix w/Thermometer	370	66CS-16	21000-1000
6601TS-Series	Brix w/SafetyBlue Thermometer	370	66CS-16	21000-1000
6602, 6603-Series	Specific Gravity	305	66CS-13	21000-500
6603DS-Series	Specific Gravity & Baume	305	66CS-13	21000-500
6604-Series	Specific Gravity	165	66CS-8F	21000-500
6605-1	Specific Gravity & Baume: Universal	380	66CS-16	21000-1000
6608-Series	API	195	66CS-8	21000-250
6609-Series	Baume: Heavy	305	66CS-13	21000-500
6611-Series	CaCl ₂ or NaCl	305	66CS-13	21000-500
6612-1	Alcohol: Tralle & Proof	305	66CS-13	21000-500
6612-2TS	Alcohol: Tralle & Proof w SafetyBlue Thermometer	355	66CS-16	21000-1000
6613-Series	Alcohol: Proof, IRS	230-305	66CS-13J	21000-500
6614TS-Series	Plato w SafetyBlue Thermometer	360-380	66CS-16	21000-1000
672xH, 673xH-Series	API:ASTM	165	66CS-8F	21000-250
675xHTS-Series	API:ASTM w/ SafetyBlue Thermometer	380	66CS-16	21000-1000
6782H-67141H-Series	Specific Gravity: ASTM	360-330	66CS-13	21000-500
67101HTS	LPG w/ SafetyBlue Thermometer	365	66CS-16	21000-500
6715xH	Specific Gravity or Soil Colloids: ASTM	280	66CS-13J	21000-500

Hydrometer Certification, NIST, 3-Point

States corrections to the readings that are traceable to NIST

Cat. No.	Description	List Price (Each)
6600	NIST Certification, 3-Point Includes Case	289.00

NOTE: Hydrometer model must be specified at point of order. Certification pricing does not include the price of the hydrometer. Certification is nonrefundable and cannot be canceled once ordered. Please allow extra time for delivery.



Jar	Jar Capacity	Max. Hydrometer Length
21000-250	250mL	215mm max
21000-500	500mL	330mm max
21000-1000	1L	385mm max

Hydrometer Jars

Made from Borosilicate Tubing

Cat. No.	Description	Pack Qty.	Case Qty.	List Price Pack	List Price Case
21000-250	250 mL Hydrometer Jar	2	12	15.62	85.20
21000-500	500 mL Hydrometer Jar	2	12	24.20	132.00
21000-1000	1000 mL Hydrometer Jar	1	6	21.34	116.40
21000-100-L	1000 mL Hydrometer Jar with Graduation Line	1	6	35.50	213.00

Prices subject to change.



Microscopes, Clinical/Compound, 1400 Series

10X High Eyepoint Eyepieces, Halogen Illumination, Quintuple Nosepiece



Cat. No.	Head	Type	Objective Magnification	Objective Type	Optical Correction	List Price (Each)
1420BR	Binocular	Brightfield	4X,10X,40X,100X	Achromatic	Fixed	1,320.00
1421BRi	Binocular	Brightfield	4X,10X,40X,100X	Plan Achromatic	Infinity	1,735.00
1430BR	Trinocular	Brightfield	4X,10X,40X,100X	Achromatic	Fixed	1,410.00
1431BRi	Trinocular	Brightfield	4X,10X,40X,100X	Plan Achromatic	Infinity	1,825.00
1423PHi	Binocular	Phase Contrast/Darkfield/Brightfield	10X,20X,40X,100X	Plan Achromatic	Infinity	2,530.00
1433PHi	Trinocular	Phase Contrast/Darkfield/Brightfield	10X,20X,40X,100X	Plan Achromatic	Infinity	2,600.00

NOTE: 220 voltage available; please contact us for availability.



Microscopes, Clinical/Compound, 1300 Series

10X High Eyepoint Eyepieces, Halogen Illumination, Quadruple Nosepiece



Cat. No.	Head	Type	Objective Magnification	Objective Type	Optical Correction	List Price (Each)
1320BR	Binocular	Brightfield	4X,10X,40X,100X	Achromatic	Fixed	940.00
1321BRi	Binocular	Brightfield	4X,10X,40X,100X	Plan Achromatic	Infinity	1,295.00
1330BR	Trinocular	Brightfield	4X,10X,40X,100X	Achromatic	Fixed	999.00
1331BRi	Trinocular	Brightfield	4X,10X,40X,100X	Plan Achromatic	Infinity	1,410.00
1323PHi	Binocular	Phase Contrast/Darkfield/Brightfield	10X,20X,40X,100X	Plan Achromatic	Infinity	1,995.00
1333PHi	Trinocular	Phase Contrast/Darkfield/Brightfield	10X,20X,40X,100X	Plan Achromatic	Infinity	2,050.00

NOTE: 220 voltage available; please contact us for availability.



Microscopes, Clinical/Compound, 1200 Series

10X Eyepieces, Halogen Illumination (BP Model Features Battery-Powered LED Illumination), Quadruple Nosepiece



Cat. No.	Head	Type	Objective Magnification	Objective Type	List Price (Each)
1210CM	Monocular	Brightfield	4X,10X,40X,100X	Achromatic	585.00
1211CM	Monocular	Brightfield	4X,10X,40X,100X	Plan Achromatic	940.00
1220CM	Binocular	Brightfield	4X,10X,40X,100X	Achromatic	850.00
1220CM-BP	Binocular	Brightfield	4X,10X,40X,100X	Achromatic	875.00
1221CM	Binocular	Brightfield	4X,10X,40X,100X	Plan Achromatic	1,210.00
1230CM	Trinocular	Brightfield	4X,10X,40X,100X	Achromatic	920.00
1231CM	Trinocular	Brightfield	4X,10X,40X,100X	Plan Achromatic	1,275.00
1222CM	Binocular	Phase Contrast	10X,20X,40X,100X	Achromatic	1,335.00
1223CM	Binocular	Phase Contrast	10X,20X,40X,100X	Plan Achromatic	1,740.00
1232CM	Trinocular	Phase Contrast	10X,20X,40X,100X	Achromatic	1,415.00
1233CM	Trinocular	Phase Contrast	10X,20X,40X,100X	Plan Achromatic	1,825.00

NOTE: 220 voltage available. Five-position nosepieces available; please contact us for pricing and availability.



Microscopes, Compound, 1100 Series

10X Eyepieces, LED Illumination



Cat. No.	Head	Type	Objective Magnification	Objective Type	List Price (Each)
1101EML	Monocular	Brightfield	4X, 10X, 40X	Achromatic	185.00
1109AML	Monocular	Brightfield	4X, 10X, 40X	Achromatic	305.00
1111AML	Monocular	Brightfield	4X, 10X, 40X, 100X	Achromatic	525.00
1112AML	Dual Monocular	Brightfield	4X, 10X, 40X, 100X	Achromatic	595.00
1113AML	Binocular	Brightfield	4X, 10X, 40X, 100X	Achromatic	675.00
1115AML	Trinocular	Brightfield	4X, 10X, 40X, 100X	Achromatic	730.00

NOTE: 220 voltage available; please contact us for pricing and availability.





Microscopes, Fluorescence, 1400 Series

10X Eyepieces, Quintuple Nosepiece



Cat. No.	Head	Type	Objective Magnification	Objective Type	Optical Correction	List Price (Each)
1482FLi	Trinocular	Brightfield / Darkfield Fluorescence	4X,10X,40X,100X	Plan Achromatic	Infinity	4,995.00
1486FLi	Trinocular	Brightfield / Darkfield Fluorescence Phase Contrast / Darkfield	4X,10X,40X,100X 10X,20X,40X,100X	Plan Achromatic Plan Achromatic	Infinity	6,395.00

NOTE: 220 voltage available. Please contact us for availability.

Microscopes, Fluorescence, 1200 Series

10X Eyepieces, Quadruple Nosepiece



Cat. No.	Head	Type	Objective Magnification	Objective Type	List Price (Each)
1282ECM	Trinocular	Fluorescence Brightfield	25X,40X 4X,10X,40X,100X	Achromatic Plan Achromatic	3,800.00
1286ECM	Trinocular	Fluorescence Phase Contrast Brightfield	25X,40X 10X,20X,40X,100X 4X,10X,40X,100X	Achromatic Plan Achromatic Plan Achromatic	4,925.00

NOTE: 220 voltage available. Five-position nosepieces available; please contact us for pricing and availability.

Microscopes, Industrial, Metallurgical, 1400 Series

VanGuard® w/ 10X High Eyepoint Eyepieces, Reflected/Transmitted Halogen Illumination, Quintuple Nosepiece



Cat. No.	Head	Type	Objective Magnification	Objective Type	Optical Correction	List Price (Each)
1442MMi	Trinocular	Brightfield	5X, 10X, 20X, 40X	Plan Achromatic	Infinity	3,475.00

NOTE: 220 voltage available. Please contact us for availability.

Microscopes, Industrial, Metallurgical, 1200 Series

10X Eyepieces, Halogen Illumination, Quadruple Nosepiece



Cat. No.	Head	Type	Objective Magnification	Objective Type	List Price (Each)
Reflected Illumination					
1241MM	Trinocular	Brightfield	5X,10X,20X,40X	Plan Achromatic	1,825.00
Reflected/Transmitted Illumination					
1242MM	Trinocular	Brightfield	5X,10X,20X,40X	Plan Achromatic	2,060.00

NOTE: 220 voltage available. Five-position nosepieces available; please contact us for pricing and availability.



Prices subject to change.

VAN GUARD

VAN GUARD
Microscopes**Microscopes, Inverted, 1400 Series**

W/ 10X Eyepieces, Halogen Illumination, Quintuple Nosepiece

Cat. No.	Head	Type	Objective Magnification	Objective Type	Optical Correction	List Price (Each)
1491Ni	Trinocular	Brightfield	4X,10X,20X,40X	Plan Achromatic	Infinity	2,790.00
1493Ni	Trinocular	Phase Contrast	4X,10X,20X,40X	Plan Achromatic	Infinity	3,445.00

1490-FLP01	1491Ni & 1493Ni Fluorescence Upgrade Kit w/ 2 Broadband Filters (Blue & Green)					3,890.00
1490-FUV001	Fluorescence Filter for eGFP; fits upgrade kit 1490-FLP01					1,425.00
1490-FFXF000	Fluorescence Specialty Filters for Single- & Multi-Dye Applications; fits upgrade kit 1490-FLP01 Call for Price					

NOTE: 220 voltage available. Please contact us for availability.



VAN GUARD

Microscopes, Inverted, 1200 Series

W/ 10X Eyepieces, Halogen Illumination, Quadruple Nosepiece

Cat. No.	Head	Type	Objective Magnification	Objective Type	List Price (Each)
1291CMI	Trinocular	Brightfield	10X,25X,40X	Plan Achromatic	2,430.00
1293CMI	Trinocular	Phase Contrast	10X,25X,40X	Plan Achromatic	2,910.00



VAN GUARD

Microscopes, Stereo, Dual-Magnification, 1300 Series

W/ 10X Eyepieces, Illuminated Stands

Cat. No.	Head	Objective Magnification	Upper Illumination	Lower Illumination	List Price (Each)
1353SL	Binocular	1X & 3X	LED	LED	480.00
1354SL	Binocular	2X & 4X	LED	LED	480.00
1363SL	Trinocular	1X & 3X	LED	LED	540.00
1364SL	Trinocular	2X & 4X	LED	LED	540.00

NOTE: 220 voltage available. Please contact us for availability.



VAN GUARD

Microscopes, Stereo, Zoom, 1300 Series

W/ 10X Eyepieces, Illuminated Stands

Cat. No.	Head	Objective Magnification	Upper Illumination	Lower Illumination	List Price (Each)
1371ZL	Binocular	0.7X to 4.5X	LED	LED	965.00
1372ZL	Trinocular	0.7X to 4.5X	LED	LED	1,030.00

NOTE: 220 voltage available. Please contact us for availability.



VAN GUARD

Microscopes, Stereo, Zoom, 1300 Series

W/ 10X Eyepieces, Non-illuminated Stands

Cat. No.	Head	Objective Magnification	Illumination	List Price (Each)
1375ZP	Binocular	0.7X to 4.5X	No	895.00
1376ZP	Trinocular	0.7X to 4.5X	No	975.00

NOTE: 220 voltage available. Please contact us for availability.



VAN GUARD

Mechanical Stage Option for all 1300-Series Stereo Microscopes

Fine Control over X-Y movement

Cat. No.	Description	Dimensions mm	Installation Required	List Price (Each)
M1305-0001-1	X - Y Coaxial Control	105 X 103	Yes	110.00



All 1100, 1200-Series Stereo Microscopes 25+ Price Until Gone



Microscopes, Stereo, Dual-Magnification, 1200 Series

W/ 10X Eyepieces, Illuminated Stands

Cat. No.	Head	Objective Magnification	Upper Illumination	Lower Illumination	List Price (Each)
1252SL	Binocular	1X & 2X	LED	LED	480.00
1253SL	Binocular	1X & 3X	LED	LED	480.00
1254SL	Binocular	2X & 4X	LED	LED	480.00
1255SL	Binocular	1X & 4X	LED	LED	480.00

NOTE: 220 voltage available. Please contact us for availability.

Microscopes, Stereo, Zoom, 1200 Series

W/ 10X Eyepieces, Illuminated Stands

Cat. No.	Head	Objective Magnification	Upper Illumination	Lower Illumination	List Price (Each)
1271ZL	Binocular	0.7X to 4.5X	LED	LED	965.00
1272ZL	Trinocular	0.7X to 4.5X	LED	LED	1,030.00
1271ZF*	Binocular	0.7X to 4.5X	Halogen	Fluorescent	895.00

NOTE: 220 voltage available. Please contact us for availability.

*DISCONTINUED: Prices are effective for remaining stock only. The 1270ZF model is being replaced by the 1270ZL models with LED illumination.

Microscopes, Stereo, Dual-Magnification, 1100 Series

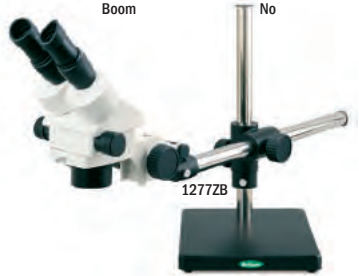
W/ 10X Eyepieces, Non-illuminated Stands

Cat. No.	Head	Objective Magnification	Stand	Illumination	List Price (Each)
1122SP	Binocular	1X & 2X	Pole	No	395.00
1123SP	Binocular	1X & 3X	Pole	No	395.00
1124SP	Binocular	2X & 4X	Pole	No	395.00
1125SP	Binocular	1X & 4X	Pole	No	395.00

Microscopes, Stereo, Zoom, 1200 Series

W/ 10X Eyepieces, Non-illuminated Stands

Cat. No.	Head	Objective Magnification	Stand	Illumination	List Price (Each)
1275ZP	Binocular	0.7X to 4.5X	Pole	No	785.00
1276ZP	Trinocular	0.7X to 4.5X	Pole	No	880.00
1277ZB	Binocular	0.7X to 4.5X	Boom	No	1,050.00
1278ZB	Trinocular	0.7X to 4.5X	Boom	No	1,115.00



Microscopes, Stereo, Zoom, 1100 Series

W/ 10X Eyepieces, Illuminated Stands

Cat. No.	Head	Objective Magnification	Upper Illumination	Lower Illumination	List Price (Each)
1131ZL	Binocular	0.75X to 3.4X	LED	LED	690.00
1132ZL	Trinocular	0.75X to 3.4X	LED	LED	840.00

NOTE: 220 voltage available. Please contact us for availability.

Prices subject to change.





Microscopes, Camera Systems, Color Video Eyepiece

Packages include power supply & RCA video cable. NTSC, 110V



Cat. No.	Camera	Lens Assembly	For Models	List Price (Each)
1200-VEK	Video Eyepiece	0.4X	1430's, 1480's, 1330's, 1100AMH's	325.00
1200-CVEK	Video Eyepiece	0.4X	1200CM's, 1240's, 1280's, 1290's	350.00
1200-ZVEK	Video Eyepiece	0.4X	1250's, 1260's, 1270's	325.00
1100-ZVEK	Video Eyepiece	0.4X	1100Z's	325.00
1200-VFE	Eyepiece, Video Framing, 10X, 23mm O.D.	N/A	Used w/ 1200-VEK, 1200-CVEK	70.00
1200-ML	Lens, F6.1	N/A	Used w/ All Video Eyepieces	25.00
M1397-K011-1	Video Eyepiece	0.4X	1353SL, 1354SL, 1371ZL, 1375ZP	325.00
M1397-K012-1	Video Eyepiece	0.4X	1363SL, 1364SL, 1372ZL, 1376ZP	325.00



Microscopes, USB Color Digital Camera Systems

Camera Kits Include Camera, Adapters to fit most eyetubes, USB Cable, and Software (Windows 32/64 Bit Only)



Cat. No.	Camera Type	Camera Model	For Microscope Models	List Price (Each)
1400-CDPC-10	USB Digital Camera, 10 Megapixels	ISH1000	1113AM's, 1115AM's, 1210's, 1220's, 1320's, 1330's, 1420's, 1430's, 1480's, 1490's	1,375.00
M1397-K009-1	USB Digital Camera, 10 Megapixels	ISH1000	1353SL, 1354SL, 1371ZL, 1375ZP	1,375.00
M1397-K010-1	USB Digital Camera, 10 Megapixels	ISH1000	1363SL, 1364SL, 1372ZL, 1376ZP	1,375.00
1200-CDPC-10	USB Digital Camera, 10 Megapixels	ISH1000	1230's, 1240's, 1280's, 1290's, 1442MMi's	1,375.00
1200-ZDPC-10	USB Digital Camera, 10 Megapixels	ISH1000	1200Z's	1,375.00
1100-ZDPC-10	USB Digital Camera, 10 Megapixels	ISH1000	1100Z's	1,375.00
1400-CDPC-5	USB Digital Camera, 5 Megapixels	ISH500	1113AM's, 1115AM's, 1210's, 1220's, 1320's, 1330's, 1420's, 1430's, 1480's, 1490's	845.00
M1397-K007-1	USB Digital Camera, 5 Megapixels	ISH500	1353SL, 1354SL, 1371ZL, 1375ZP	845.00
M1397-K008-1	USB Digital Camera, 5 Megapixels	ISH500	1363SL, 1364SL, 1372ZL, 1376ZP	845.00
1200-CDPC-5	USB Digital Camera, 5 Megapixels	ISH500	1230's, 1240's, 1280's, 1290's, 1442MMi	845.00
1200-ZDPC-5	USB Digital Camera, 5 Megapixels	ISH500	1200Z's	845.00
1100-ZDPC-5	USB Digital Camera, 5 Megapixels	ISH500	1100Z's	845.00
1400-CDPC-3	USB Digital Camera, 3 Megapixels	ISH300	1113AM's, 1115AM's, 1210's, 1220's, 1320's, 1330's, 1420's, 1430's, 1480's, 1490's	699.00
M1397-K005-1	USB Digital Camera, 3 Megapixels	ISH300	1353SL, 1354SL, 1371ZL, 1375ZP	699.00
M1397-K006-1	USB Digital Camera, 3 Megapixels	ISH300	1363SL, 1364SL, 1372ZL, 1376ZP	699.00
1200-CDPC-3	USB Digital Camera, 3 Megapixels	ISH300	1230's, 1240's, 1280's, 1290's, 1442MMi	699.00
1200-ZDPC-3	USB Digital Camera, 3 Megapixels	ISH300	1200Z's	699.00
1100-ZDPC-3	USB Digital Camera, 3 Megapixels	ISH300	1100Z's	699.00



Microscopes, Camera Systems, Color CCD Video

Camera Kits Include Camera, Adapters, S-Video & RCA Cables, and Power Supply. NTSC, 110V



Cat. No.	Camera	C-Mount Adapter/ Lens Assembly	Video Signal	For Models	List Price (Each)
1400-CVK	Color CCD Video	0.4X	NTSC	1113AM's, 1115AM's, 1210's, 1220's, 1320's, 1330's, 1420's, 1430's,	1,495.00
1490-CVK	Color CCD Video	0.4X	NTSC	1480's	1,495.00
1200-CVK	Color CCD Video	0.4X	NTSC	1490's	1,495.00
1200-ZVK	Color CCD Video	0.5X	NTSC	1230's, 1240's, 1280's, 1290's, 1442MMi	1,495.00
1100-ZVK	Color CCD Video	0.5X	NTSC	1200Z's	1,495.00
				1100Z's	



Microscopes, Digital SLR Camera Systems

Camera Kits Include Camera, Adapters, USB Cable, SD Memory Card, and Software (Windows & Mac)

Cat. No.	Camera	Model	For Models	List Price (Each)
1400-CDCK	DSLR	Call for Current Model	1113AM's, 1115AM's, 1210's, 1220's, 1320's, 1330's, 1420's, 1430's, 1480's, 1490's	2,495.00
M1397-K001-1	DSLR	Call for Current Model	1353SL, 1354SL, 1371ZL, 1375ZP	2,495.00
M1397-K002-1	DSLR	Call for Current Model	1363SL, 1364SL, 1372ZL, 1376ZP	2,495.00
1200-CDCK	DSLR	Call for Current Model	1230's, 1240's, 1280's, 1290's, 1442MMi	2,495.00
1200-ZDCK	DSLR	Call for Current Model	1200Z's	2,495.00
1100-ZDCK	DSLR	Call for Current Model	1100Z's	2,495.00

NOTE: Prices and camera model subject to change. Additional adapters are available to adapt many digital SLR camera models to VanGuard® Microscopes. Please contact us for details.
*These digital cameras are for sale in the USA only. Non Returnable.



Microscopes, Adapter Components, Digital SLR

VanGuard® Adapters (Camera not included)

Cat. No.	Camera	For Models	List Price (Each)
1400-CNC	Not Included	1113AM's, 1115AM's, 1210's, 1220's, 1320's, 1330's, 1420's, 1430's, 1480's, 1490's	780.00
M1397-K003-1	Not Included	1353SL, 1354SL, 1371ZL, 1375ZP	780.00
M1397-K004-1	Not Included	1363SL, 1364SL, 1372ZL, 1376ZP	780.00
1200-CNC	Not Included	1230's, 1240's, 1280's, 1290's, 1442MMi	780.00
1200-ZNC	Not Included	1200Z's	780.00
1100-ZNC	Not Included	1100Z's	780.00

Note: Make and model of camera must be specified at point of order.



Microscopes, Fluorescent Ring Lamps

VanGuard®

Cat. No.	Description	For Models	List Price (Each)
1200-LFLR	Fluorescent Ring Lamp w/50mm Adapter, 8W, 110V	1120's, 1130's, 1250's, 1260's, 1270's, 1370's	95.00
1200-8WFRL	Ring Lamp Bulb, Fluorescent, 8W (500-Hour Life)	1200-LFLR	17.50

Prices subject to change.



Microscopes, LED Light Source w/Light Guides & Accessories



VanGuard®

Cat. No.	Description	For Light Source Model	Variable Illumination	For All Models	List Price (Each)
1200-LED1	LED Control Unit w/dual single light guides	Not Applicable	Yes (dual independent)	1120's, 1130's, 1250's, 1260's,	315.00
1200-LEDRL1	Optional LED ring guide for LED1 light source	1200-LED1	Yes	1270's, 1370's	80.00

NOTE: 1200-LED1 comes standard with Control Unit and two single light guides. Other Wavelengths Available. Contact Us for Details.



Microscopes, Parts & Accessories

VanGuard®

Cat. No.	Description	For Models	List Price (Each)
----------	-------------	------------	-------------------

Condensers

1400-CMAC	1.25 N.A. Abbe w/ Iris & Filter Holder	1400BR (Older Models), 1482FL	42.00
1400-CMACi	1.25 N.A. Abbe w/ Iris, w/out Filter Holder	1400's (Current Models, except 1490's)	65.00
1400-CMDCD	0.90 N.A. Darkfield (Dry)	1400's, 1320's, 1330's	153.00
1400-CMDCi	1.25-1.36 N.A. Darkfield (Immersion)	1400's, 1300's	195.00
1400-CMMACi	1.25 N.A. Abbe w/ Iris & Filter Holder	1442MMi	60.00
1400-CMPC	1.25 N.A. Zernike Phase w/Iris & Filter Holder	1400's (Non Infinity)	255.00
1400-CMPCi	1.25 N.A. Zernike Phase w/Iris & Darkfield Stop	1400PHi's	340.00
1300-CMAC	1.25 N.A. Abbe w/ Iris, w/out Filter Holder	1320's, 1330's	62.00
1300-CMPCi	1.25 N.A. Zernike Phase w/Iris & Darkfield Stop	1300PHi's	443.00
1200-CMAC	1.25 N.A. Abbe w/ Iris & Filter Holder	1200CM's	39.00
1200-CMPCA	1.25 N.A. Zernike Phase w/ Iris & Filter Holder	1200CM's, 1286ECM	310.00
1200-AMAC	1.25 N.A. Abbe w/ Iris & Filter Holder	1242MM, 1282ECM	150.00
1200-CMIBC	0.40 N.A. LWD (30 mm) Brightfield Condenser w/Iris & Filter Holder 1.25	1291CMI	125.00
1200-CMIPC	N.A. Zernike Phase w/ Iris & Filter Holder	1293CMI	345.00
1200-CMDCD	0.85 N.A. Darkfield (Dry)	1200CM's, 1242MM, 1280's	155.00
1200-CMDCi	1.25 N.A. Darkfield (Immersion)	1200CM's, 1280's	200.00
1200-SDC	Darkfield Condenser	1130's, 1250's, 1260's, 1270ZF's, 1270ZH/L's	85.00



Dust Covers, Vinyl

Cat. No.	Dimensions Height x Length (mm)	For Models	List Price (Each)
1400-DC	460 X 590	1400BR's, 1400BRi's, 1400PHi's, 1400FLi's	5.00
1400-DCM	600 X 530	1442MMi's	9.00
1490-DC	830 X 640	1490INi's	5.00
1300-DC	460 X 610	1320's, 1330's	5.00
1200-DCADV	570 X 540	1200MM's, 1200CMi's, 1200ECM's	5.00
1200-DCC	450 X 480	1200CM's	5.00
1200-DCS	390 X 400	1200SH's, 1200SF's, 1100SP's	5.00
1200-DCZ	440 X 520	1200SL's, 1200ZL's, 1200ZH's, 1200ZF's	5.00
1100-DCAMH	350 X 400	1100AMH/L's	5.00
1100-DCAMI	360 X 430	1109AMI/L's	5.00
1100-DCEM	320 X 350	1101EM/L	5.00
M1397-001-1	450 X 490	1350's, 1360's, 1370's	14.00



Eyepieces

1400-10XCME	10X Widefield, Each	1400's, 1100AMH's, 1109AMI/L	32.00
1400-15XCME	15X Semi-Widefield, Each	1400's, 1400i's, 1320's, 1330's, 1200CM's, 1100AMH/L's, 1109AMI/L	45.00
1400-20XCME	20X Semi-Widefield, Each	1400's, 1400i's, 1320's, 1330's, 1200CM's, 1100AMH/L's, 1109AMI/L	55.00
1400-10XHE23E	10X Extra-Widefield, High Eyepoint, 23mm, Each	1320's, 1330's, 1400's	64.00
1400-10XHE30E	10X Ultra-Widefield, High Eyepoint, 30mm, Each	1490's	99.00
1400-10XHE30ME	10X Ultra-Widefield, High Eyepoint, 30mm, Each	1442MMi	67.00
1400-10XHE18.5E	10X Widefield, High Eyepoint, Each	1480FLi's	61.50
1200-10XSME	10X Widefield, Each	1120's, 1130's, 1250's, 1260's	54.00
1200-10XZME	10X Widefield, Each	1270's	68.00
1200-20XSZME	20X Semi-Widefield, Each	1120's, 1130's, 1250's, 1260's, 1270's	68.00
1200-10XCME	10X Widefield, Each	1200CM's, 1290's	40.00
1200-16XCME	16X Semi-Widefield, Each	1200CM's, 1240's, 1280's, 1290's	40.00
1200-10XAME	10X Super-Widefield, Each	1240's, 1280's	45.00
1100-10XEME	10X Widefield, Each	1101EM/L	23.00
M1304-0001-1	10X Widefield Eyepiece, Extra-Widefield, FD 20mm	1300SL's	67.00
M1304-0002-1	10X Widefield Eyepiece, Ultra-Widefield, FD 22mm	1300ZL/ZP	100.00
M1304-0003-1	15X Widefield Eyepiece, Widefield, FD 15mm	1300ZL/ZP	100.00
M1304-0004-1	20X Widefield Eyepiece, Semi-Widefield, FD 12mm	1300ZL/ZP	105.00
M1304-0005-1	25X Widefield Eyepiece, Semi-Widefield, FD 9mm	1300ZL/ZP	110.00



Filters

1400-BF44	Blue, 44mm	1400i's	5.00
1400-GF44	Green, 44mm	1400i's	5.00
1400-NF44	Dispersion, 44mm	1400i's	5.00
1400-BF45	Blue, 45mm	1490's	5.00
1400-GF45	Green, 45mm	1490's	5.00
1400-NF45	Dispersion, 45mm	1490's	5.00
1400-PIN	Polarizing	1442MMi	85.00
1200-BF	Blue, 32mm	1320's, 1330's, 1200CM's, 1242MM, 1280's, 1290's, 1100AMH, 1400's, 1442MMi	5.00
1200-GF	Green, 32mm	1320's, 1330's, 1200CM's, 1242MM, 1280's, 1290's, 1100AMH, 1400's, 1442MMi	5.00
1200-NF	Dispersion, 32mm	1320's, 1330's, 1200CM's, 1242MM, 1280's, 1290's, 1100AMH, 1400's, 1442MMi	5.00
1200-YF	Yellow, 32mm	1320's, 1330's, 1200CM's, 1242MM, 1280's, 1290's, 1100AMH, 1400's, 1442MMi	5.00
1200-BFZH	Blue, 39mm	1270ZH's, 1270ZF's	11.50
1200-ND70	Neutral Density Filter Set (70mm) (light, medium, heavy)	1250SL, 1270ZL	15.00



Microscopes, Parts & Accessories (continued)

VanGuard®

Cat. No.	Description	For Models	List Price (Each)
Fluorescence Kits & Accessories			
1490-FLP01	Fluorescence Upgrade Kit w/ 2 Broadband Filters (Blue & Green)	1490's	3,890.00
1490-FUV001	Fluorescence Specialty Filter for eGFP	1490-FLP01 (Upgrade for 1490's)	Call for Price
1490-FFXFXXX	Fluorescence Specialty Filters for Single- & Multiple-Dye Applications	1490-FLP01 (Upgrade for 1490's)	Call for Price
1490-EFH	Fluorescence Filter Holder (No Filters)	1490-FLP01 (Upgrade for 1490's)	375.00
1400-FHWF	Fluorescence Filter Holder w/ 2 Broadband Filters (Blue & Green)	1480FLi's	1,260.00
1400-FFXFXXX	Fluorescence Specialty Filters for Single- & Multiple-Dye Applications	1480FLi's	Call for Price
1400-EFH	Fluorescence Filter Holder (No Filters)	1480FLi's	140.00
1490-FUV-F1	Fluorescence Stock Filters	1490-FLO01 (Upgrade for 1490's)	19.60
Fuses			
1400-FS1	Fuse, 0.25A 250V	1300's, Older 1400's	2.00
1400-FS3	Fuse, 5.0A 250V	1482FL & 1486FL External Power Supply	2.00
1400-FS4	Fuse, 8.0A 250V	1482FLi & 1486FLi External Power Supply (2), 1490-FLP01 (2)	2.00
1400-FS5	Fuse, 3.0A 250V	1442MMi	2.00
1200-FS1	Fuse, 0.5A 250V	1101EM's, 1100AM's, 1200CM's, 1240's, 1280's, 1290's, Older 1300's, 1400BR's (2), 1400PH's (2), & 1480's (transmitted, 2), 1490's (2)(older)	2.00
1200-FS2	Fuse, 5.0A 250V	1282ECM & 1286ECM External Power Supply	2.00
1200-FS3	Fuse, 0.75A 250V	1250's, 1260's, 1270ZF's, 1270ZH's, 1130's	2.00
1200-FS4	Fuse, 1.0A 250V	1270ZL's, 1250SL's, 1130ZL's, 1490's (newer)	2.00
Immersion Oil			
1200-IOG	Immersion Oil, Low Viscosity (7.4 ml / ¼ oz)	All Oil Immersion Objectives (Except Fluorescence)	10.50
1200-IOF	Immersion Oil, for Fluorescence (7.4 ml / ¼ oz)	All Fluorescence Oil Immersion Objectives	14.50
Kohler Illumination			
1400-KIA	Field Diaphragm, for Kohler Illumination	1400's	129.00
1200-KIA	Field Diaphragm, for Kohler Illumination	1200CM's, 1242MM, 1280's	57.00
Lamps			
1400-20WHL	20W/6V Halogen	1400's (except 1490's)	8.50
1400-30WHL-P	30W/6V Halogen	1490's	12.50
1400-30W12VHL	30W/12V Halogen	1442MMi (Transmitted)	13.00
1400-50W12VHL	50W/12V Halogen	1442MMi (Reflected)	16.00
1400-100WMLO	100W Mercury HBO	1280's & 1480's Fluorescence Illuminator, 1490-FLP01, 200 hrs	222.00
1200-5WFL	5W Fluorescent, 2 Pin (Older Style)	1260SF's, 1270ZF's, 1130ZF's	10.00
1200-5WFL4	5W Fluorescent, 110V, 4 Pin (Current Models)	1260SF's, 1270ZF's, 1130ZF's	10.00
1200-5WFL-220	5W Fluorescent, 110V, 220V, 2 Pin	1260ZF's, 1270ZF's, 1130ZF's (220V)	10.00
1200-15WHL	15W Halogen w/ Reflector, 6V	1250's, 1260's, 1270ZH's, 1270ZF's, 1130's (Upper)	10.00
1200-15WHL	15W Halogen, 6V	1250's, 1270ZH's, 1130ZH's (Lower)	8.50
1200-20WHL	20W Halogen, 6V	1300's, 1200CM's, 1240's, 1280's, 1290's, 1100AMH's	8.50
1100-20WIL	20W Incandescent, 110V	1101EM, 1102SM, 1109AMI (110V Models)	6.00
1100-20WIL-220	20W Incandescent, 220V	1101EM, 1102SM, 1109AMI (220V Models)	5.80
Lenses, Supplementary			
1200-SL05	0.5X Reduction	1120's, 1130's, 1250's, 1260's, 1270's	150.00
1200-SL10	1.0X Protective Shield	1120's, 1130's, 1250's, 1260's, 1270's	39.00
1200-SL20	2.0X Magnification	1120's, 1130's, 1250's, 1260's, 1270's	192.00
M1304-0006-1	0.5X Supplementary Lens	1370's	130.00
M1304-0007-1	0.75X Supplementary Lens	1370's	140.00
M1304-0008-1	1.0X Supplementary Lens	1370's	50.00
M1304-0009-1	1.5X Supplementary Lens	1370's	150.00
M1304-0010-1	2.0X Supplementary Lens	1370's	160.00
Objectives			
1400-004XBAB	4X Achromatic (DIN), 0.10 N.A.	1300's, 1400's	28.00
1400-010XBAB	10X Achromatic (DIN), 0.25 N.A.	1300's, 1400's	42.00
1400-020XBAB	20X Achromatic (DIN), 0.40 N.A.	1300's, 1400's	60.00
1400-040XBAB	40X Achromatic (DIN), 0.65 N.A.	1300's, 1400's	67.00
1400-060XBAB	60X Achromatic (DIN), 0.85 N.A.	1200CM's, 1300's, 1400's	91.00
1400-100XBAB	100X Achromatic-Oil (DIN), 1.25 N.A.	1300's, 1400's	98.00
1400-002XBPOi	2X Plan Infinity, 0.05 N.A.	1300BRi's, 1400BRi's, 1480FLi's	92.20
1400-004XBPOi	4X Plan Infinity, 0.10 N.A.	1300BRi's, 1400BRi's, 1480FLi's	80.00
1400-010XBPOi	10X Plan Infinity, 0.25 N.A.	1300BRi's, 1400BRi's, 1480FLi's	112.00
1400-020XBPOi	20X Plan Infinity, 0.40 N.A.	1300BRi's, 1400BRi's, 1480FLi's	185.00
1400-040XBPOi	40X Plan Infinity, 0.65 N.A.	1300BRi's, 1400BRi's, 1480FLi's	192.00
1400-050XBPOi	50X Plan-Oil Infinity, 0.90 N.A.	1300BRi's, 1400BRi's, 1480FLi's	650.00
1400-100XBPOi	100X Plan-Oil Infinity-Oil, 1.25 N.A.	1300BRi's, 1400BRi's, 1480FLi's	320.00
1400-004XFLOi	4X Plan Fluorite Infinity, 0.10 N.A.	1300BRi's, 1400BRi's, 1480FLi's	125.00
1400-010XFLOi	10X Plan Fluorite Infinity, 0.25 N.A.	1300BRi's, 1400BRi's, 1480FLi's	312.00
1400-020XFLOi	20X Plan Fluorite Infinity, 0.40 N.A.	1300BRi's, 1400BRi's, 1480FLi's	425.00
1400-040XFLOi	40X Plan Fluorite Infinity, 0.65 N.A.	1300BRi's, 1400BRi's, 1480FLi's	520.00
1400-100XFLOi	100X Plan Fluorite Infinity, 1.25 N.A.	1300BRi's, 1400BRi's, 1480FLi's	1,225.00





Microscopes, Parts & Accessories (continued)

VanGuard®

Cat. No.	Description	For Models	List Price (Each)
Objectives			
1400-010XPP0i	10X Plan Phase Contrast Infinity, 0.25 N.A.	1300PHi's, 1400PHi's	155.00
1400-020XPP0i	20X Plan Phase Contrast Infinity, 0.40 N.A.	1300PHi's, 1400PHi's	185.00
1400-040XPP0i	40X Plan Phase Contrast Infinity, 0.65 N.A.	1300PHi's, 1400PHi's	265.00
1400-100XPP0i	100X Plan Phase Contrast Infinity-Oil, 1.25 N.A.	1300PHi's, 1400PHi's	492.00
1400-005XLROi	5X Plan Infinity, LWD, 0.12 N.A.	1442MMi	102.00
1400-010XLROi	10X Plan Infinity, LWD, 0.25 N.A.	1442MMi	140.00
1400-020XLROi	20X Plan Infinity, LWD, 0.40 N.A.	1442MMi	220.00
1400-040XLROi	40X Plan Infinity, LWD, 0.60 N.A.	1442MMi	242.00
1400-050XLROi	50X Plan Infinity, LWD, 0.70 N.A.	1442MMi	247.00
1400-060XLROi	60X Plan Infinity, LWD, 0.75 N.A.	1442MMi	273.00
1400-080XLROi	80X Plan Infinity, LWD, 0.80 N.A.	1442MMi	356.00
1400-100XLROi	100X Plan Infinity, LWD, 0.85 N.A.	1442MMi	535.00
1400-004XLBOi	4X Plan Infinity, LWD, 0.10 N.A.	1490's	90.00
1400-010XLBOi	10X Plan Infinity, LWD, 0.25 N.A.	1490's	120.00
1400-020XLBOi	20X Plan Infinity, LWD, 0.40 N.A.	1490's	180.00
1400-040XLBOi	40X Plan Infinity, LWD, 0.60 N.A.	1490's	245.00
1400-010XLPOi	10X Plan Phase Infinity, LWD, 0.25 N.A.	1493Ini	210.00
1400-020XLPOi	20X Plan Phase Infinity, LWD, 0.40 N.A.	1493Ini	245.00
1400-040XLPOi	40X Plan Phase Infinity, LWD, 0.60 N.A.	1493Ini	350.00
1490-004XLFLOi	4X Plan Fluorite Infinity, LWD, 0.13 N.A.	1490's	150.00
1490-010XLFLOi	10X Plan Fluorite Infinity, LWD, 0.30 N.A.	1490's	390.00
1490-020XLFLOi	20X Plan Fluorite Infinity, LWD, 0.50 N.A.	1490's	570.00
1490-040XLFLOi	40X Plan Fluorite Infinity, LWD, 0.60 N.A.	1490's	775.00
1200-004XBABO	4X Achromatic (DIN), 0.10 N.A.	1200CM's	28.00
1200-010XBABO	10X Achromatic (DIN), 0.25 N.A.	1200CM's	42.00
1200-020XBABO	20X Achromatic (DIN), 0.40 N.A.	1200CM's	60.00
1200-040XBABO	40X Achromatic (DIN), 0.65 N.A.	1200CM's	67.00
1200-100XBABO	100X Achromatic-Oil (DIN), 1.25 N.A.	1200CM's	98.00
1200-010XPAO	10X Achromatic Phase (DIN), 0.25 N.A.	1200CM's	95.00
1200-020XPAO	20X Achromatic Phase (DIN), 0.40 N.A.	1200CM's	121.00
1200-040XPAO	40X Achromatic Phase (DIN), 0.65 N.A.	1200CM's	143.00
1200-100XPAO	100X Achromatic Phase-Oil (DIN), 1.25 N.A.	1200CM's	206.00
1200-004XBPO	4X Plan (DIN), 0.10 N.A.	1200CM's, 1240's, 1280's, 1290's	65.00
1200-010XBPO	10X Plan (DIN), 0.25 N.A.	1200CM's, 1280's	115.00
1200-025XBPO	25X Plan (DIN), 0.40 N.A.	1200CM's, 1280's	170.00
1200-040XBPO	40X Plan (DIN), 0.65 N.A.	1200CM's, 1280's	235.00
1200-060XBPO	60X Plan (DIN), 0.85 N.A.	1200CM's, 1280's	255.00
1200-100XBPO	100X Plan-Oil (DIN), 1.25 N.A.	1200CM's, 1280's	255.00
1200-010XPPD	10X Plan Phase (DIN), 0.25 N.A.	1213CM, 1223CM, 1233CM, 1286ECM	155.00
1200-020XPPD	20X Plan Phase (DIN), 0.40 N.A.	1213CM, 1223CM, 1233CM, 1286ECM	195.00
1200-025XPPD	25X Plan Phase (DIN), 0.40 N.A.	1213CM, 1223CM, 1233CM, 1286ECM	195.00
1200-040XPPD	40X Plan Phase (DIN), 0.65 N.A.	1213CM, 1223CM, 1233CM, 1286ECM	220.00
1200-100XPPD	100X Plan Phase-Oil (DIN), 1.25 N.A.	1213CM, 1223CM, 1233CM, 1286ECM	309.00
1200-025XFLO	25X Achromatic UV Pass (DIN), 0.65 N.A.	1280's	170.00
1200-040XFLO	40X Achromatic UV Pass (DIN), 1.00 N.A.	1280's	230.00
1200-005XLRO	5X Achromatic Phase (DIN), 0.25 N.A.	1240's	65.00
1200-010XLRO	10X Plan (DIN), LWD, 0.25 N.A.	1240's	143.00
1200-020XLRO	20X Plan (DIN), LWD, 0.40 N.A.	1240's	195.00
1200-025XLRO	25X Plan (DIN), LWD, 0.40 N.A.	1240's	160.00
1200-040XLRO	40X Plan (DIN), LWD, 0.60 N.A.	1240's	200.00
1200-060XLRO	60X Plan (DIN), LWD, 0.75 N.A.	1240's	225.00
1200-080XLRO	80X Plan (DIN), LWD, 0.80 N.A.	1240's	260.00
1200-010XLBO	10X Plan (DIN), LWD, 0.25 N.A.	1290's	120.00
1200-025XLBO	25X Plan (DIN), LWD, 0.40 N.A.	1290's	180.00
1200-040XLBO	40X Plan (DIN), LWD, 0.65 N.A.	1290's	199.00
1200-010XLPO	10X Plan Phase (DIN), LWD, 0.25 N.A.	1293CMI	170.00
1200-025XLPO	25X Plan Phase (DIN), LWD, 0.40 N.A.	1293CMI	215.00
1200-040XLPO	40X Plan Phase (DIN), LWD, 0.65 N.A.	1293CMI	240.00
1100-004XBABO	4X Achromatic (DIN), 0.10 N.A.	1100AMH/L's, 1109AMI/L	21.00
1100-010XBABO	10X Achromatic (DIN), 0.25 N.A.	1100AMH/L's, 1109AMI/L	28.00
1100-040XBABO	40X Achromatic (DIN), 0.65 N.A.	1100AMH/L's, 1109AMI/L	52.00
1100-060XBABO	60X Achromatic (DIN), 0.85 N.A.	1100AMH/L's, 1109AMI/L	99.00
1100-100XBABO	100X Achromatic-Oil (DIN), 1.25 N.A.	1100AMH/L's	87.00
Phase Contrast Centering Telescopes			
1400-PCT	Centering Telescope for Phase Contrast	1300PHi's, 1400PHi's, 1486FLi	125.00
1400-PCTII	Centering Telescope for Phase Contrast	1493Ini	140.00
1200-PCT	Centering Telescope for Phase Contrast	1200CM's, 1286ECM	80.00
1200-PCTI	Centering Telescope for Phase Contrast	1293CMI	80.00





Microscopes, Parts & Accessories (continued)

VanGuard®, Microscope Case, Interior Straps with Velcro, Interior and Exterior Pockets, Padding and Vinyl Handle

Cat. No.	Description	For Models	List Price (Each)
1400-MCL	Case, Hard-Shell, Vinyl Interior Dimensions: 12 X 9.5 X 18"	For Most Microscopes	49.00



Microscopes, Parts & Accessories (continued)

VanGuard®

Cat. No.	Description	For Models	List Price (Each)
Polarizing Kits			
1400-PAK	Polarizer/Analyzer, Transmitted	1400's & 1400i series	75.00
1400-PAKMi	Polarizer/Analyzer, Transmitted	1442MMi	52.00
1200-PAK-38	Polarizer/Analyzer, 38mm, Transmitted	1200CM's, 1242MM, 1280's (w/ Köhler Illumination)	78.00
1200-ZPAK	Polarizer/Analyzer, Transmitted	1130's, 1250's, 1260's, 1270's	240.00
Stage Plates			
1400-SPG	Stage Insert, Glass	1490's	70.00
1400-SPGM	Stage Insert, Glass	1442MMi	12.10
1400-SPP	Stage Insert: Petri Dish, 38mm	1490's	70.00
1400-SPS	Stage Insert: Slide/Petri Dish, 54mm	1490's	70.00
1400-SPT	Stage Insert: Terasaki/Petri Dish, 65mm	1490's	85.00
M1305-0001-1	Mechanical Stage	1300-Stereo's	110.00
M1305-0002-1	Translucent Stage Plate, 90mm	1300SL's, 1300ZL's	11.50
M1305-0003-1	Black/White Stage Plate, 90mm	1300SL's, 1300ZL's	11.50
M1305-0004-1	Black/White Stage Plate, 78mm	1300ZP's	11.50
1200-SPFR	Stage Plate, Frosted, 75mm	1130's, 1250's, 1260's, 1270ZF/ZH's, 1270ZL's	5.80
1200-SPBW	Stage Plate, Black & White Reversible, 75mm	1130's, 1250's, 1260's, 1270ZF/ZH's, 1270ZL's	7.25
1200-SPBW1	Stage Plate, Black & White Reversible, 90mm	1120SP's, 1270ZP's	8.75
Miscellaneous			
1200-MSL10	Slides, 1x3", 1.0-1.2mm, 72/Box	All Microscopes	4.95
1200-CS242	Cover Glass, 24x24mm, 0.13-0.17mm, 1000/Pack (10 Boxes/100 Ea.)	All Microscopes	19.50
1200-MLCK	Cleaning Kit, Microscope Lens	All Microscopes	7.50
1400-LP	Lens Paper, 4 x 6 in Booklet, 50 Sheets/Booklet	All Microscopes	2.75
45000-OT001	VEE GEE Optical Tissue, 280/Box	All Microscopes	4.75



Microscopes Lens Cleaning Kit

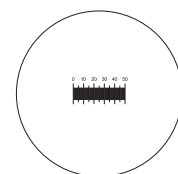


Microscopes Slides and Cover Glass Sold Separately

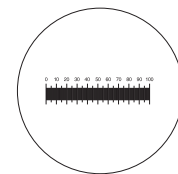
Microscopes, Reticles & Micrometers

VanGuard®, All Reticles Installed In An Eyepiece

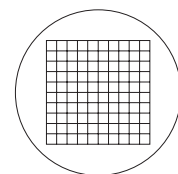
Cat. No.	Description	For Models	List Price (Each)
Scale Reticles			
1400-RSM5C10Ci	5 mm, 100 Divisions (0.05 mm), 10X Eyepiece	1400i's, 1320's, 1320's, 1330's	225.00
1400-RSM5C10F	5 mm, 100 Divisions (0.05 mm), 10X Eyepiece	1480's	215.00
1400-RSM5C10C	5 mm, 100 Divisions (0.05 mm), 10X Eyepiece	1400's, 1100AMH's	179.00
1400-RSM5C15C	5 mm, 100 Divisions (0.05 mm), 15X Eyepiece	1400's, 1400i's, 1300's, 1200CM's, 1240's, 1280's, 1290's, 1100AMH/L's	199.00
1400-RSM5C20C	5 mm, 100 Divisions (0.05 mm), 20X Eyepiece	1400's, 1400i's, 1300's, 1200CM's, 1240's, 1280's, 1290's, 1100AMH/L's	211.00
1490-RSM5C10C	5 mm, 100 Divisions (0.05 mm), 10X Eyepiece	1490's	260.00
M1304-K001-1	5 mm, 100 Divisions (0.05 mm), 10X Eyepiece	1300SL's	211.00
M1304-K002-1	5 mm, 100 Divisions (0.05 mm), 10X Eyepiece	1300ZL's	226.00
1200-RSM5C10C	5 mm, 100 Divisions (0.05 mm), 10X Eyepiece	1200CM's, 1290's	195.00
1200-RSM5C10A	5 mm, 100 Divisions (0.05 mm), 10X Eyepiece	1240's, 1280's	199.00
1200-RSM5C10S	5 mm, 100 Divisions (0.05 mm), 10X Eyepiece	1120's, 1130's, 1250's, 1260's	211.00
1200-RSM5C10Z	5 mm, 100 Divisions (0.05 mm), 10X Eyepiece	1270's	226.00
1200-RSM5C15SZ	5 mm, 100 Divisions (0.05 mm), 15X Eyepiece	1120's, 1130's, 1250's, 1260's, 1270's	220.00
1100-RSM5C10C	5 mm, 100 Divisions (0.05 mm), 10X Eyepiece	1109AM/L, 1100AMH/L's, 1102SM	100.00
1400-RSM10C10Ci	10 mm, 100 Divisions (0.1 mm), 10X Eyepiece	1400i's, 1320's, 1330's	220.00
1400-RSM10C10F	10 mm, 100 Divisions (0.1 mm), 10X Eyepiece	1480's	215.00
1400-RSM10C10C	10 mm, 100 Divisions (0.1 mm), 10X Eyepiece	1400's, 1100AMH's	179.00
1400-RSM10C15C	10 mm, 100 Divisions (0.1 mm), 15X Eyepiece	1400's, 1400i's, 1300's, 1200CM's, 1240's, 1280's, 1290's, 1100AMH/L's	200.00
1400-RSM10C20C*	10 mm, 100 Divisions (0.1 mm), 20X Eyepiece	1400's, 1400i's, 1300's, 1200CM's, 1240's, 1280's, 1290's, 1100AMH/L's	211.00
1490-RSM10C10C	10 mm, 100 Divisions (0.1 mm), 10X Eyepiece	1490's	260.00
1400-RSM10C10M	10 mm, 100 Divisions (0.1mm), 10X Eyepiece	1440MM's	154.00
M1340-K003-1	10 mm, 100 Divisions (0.1mm), 10X Eyepiece	1300SL's	211.00
M1340-K004-1	10 mm, 100 Divisions (0.1mm), 10X Eyepiece	1300ZL's	226.00
1200-RSM10C10C	10 mm, 100 Divisions (0.1 mm), 10X Eyepiece	1200CM's, 1290's	195.00
1200-RSM10C10A	10 mm, 100 Divisions (0.1 mm), 10X Eyepiece	1240's, 1280's	198.00
1200-RSM10C10S	10 mm, 100 Divisions (0.1 mm), 10X Eyepiece	1120's, 1130's, 1250's, 1260's	210.00
1200-RSM10C10Z	10 mm, 100 Divisions (0.1 mm), 10X Eyepiece	1270's	225.00
1200-RSM10C15SZ	10 mm, 100 Divisions (0.1 mm), 15X Eyepiece	1120's, 1130's, 1250's, 1260's, 1270's	220.00
1100-RSM10C10C	10 mm, 100 Divisions (0.1 mm), 10X Eyepiece	1109AM/L, 1100AMH/L's, 1102SM	100.00
1400-RSE05C10Ci	0.500 in, 100 Divisions (0.005 in), 10X Eyepiece	1400's, 1320's, 1330's	220.00
1400-RSE05C10F	0.500 in, 100 Divisions (0.005 in), 10X Eyepiece	1480's	215.00
1400-RSE05C10C	0.500 in, 100 Divisions (0.005 in), 10X Eyepiece	1400's, 1100AMH/L's	179.00
1490-RSE05C10C	0.500 in, 100 Divisions (0.005 in), 10X Eyepiece	1490's	260.00
M1304-K005-1	0.500 in, 100 Divisions (0.005 in), 10X Eyepiece	1300SL's	211.00
M1304-K006-1	0.500 in, 100 Divisions (0.005 in), 10X Eyepiece	1300ZL's	226.00
1200-RSE05C10C	0.500 in, 100 Divisions (0.005 in), 10X Eyepiece	1200CM's, 1290's	195.00
1200-RSE05C10A	0.500 in, 100 Divisions (0.005 in), 10X Eyepiece	1240's, 1280's	198.00
1200-RSE05C10S	0.500 in, 100 Divisions (0.005 in), 10X Eyepiece	1120's, 1130's, 1250's, 1260's	210.00
1200-RSE05C10Z	0.500 in, 100 Divisions (0.005 in), 10X Eyepiece	1270's	225.00
1200-RSE05C15SZ	0.500 in, 100 Divisions (0.005 in), 15X Eyepiece	1120's, 1130's, 1250's, 1260's, 1270's	220.00
* Due to the field size of the eyepiece, the whole scale cannot be seen.			
Grid Reticles			
1400-RGM10110Ci	10 mm x 10 mm, 100 Squares (1 mm ²), 10X Eyepiece	1400's, 1320's, 1330's	220.00
1400-RGM10110F	10 mm x 10 mm, 100 Squares (1 mm ²), 10X Eyepiece	1480's	215.00
1400-RGM10110C	10 mm x 10 mm, 100 Squares (1 mm ²), 10X Eyepiece	1400's, 1100AMH/L's	179.00
1490-RGM10110C	10 mm x 10 mm, 100 Squares (1 mm ²), 10X Eyepiece	1490's	260.00
M1304-K007-1	10 mm x 10 mm, 100 Squares (1 mm ²), 10X Eyepiece	1300SL's	211.00
M1304-K008-1	10 mm x 10 mm, 100 Squares (1 mm ²), 10X Eyepiece	1300ZL's	226.00
1200-RGM10110C	10 mm x 10 mm, 100 Squares (1 mm ²), 10X Eyepiece	1200CM's, 1290's	195.00
1200-RGM10110A	10 mm x 10 mm, 100 Squares (1 mm ²), 10X Eyepiece	1240's, 1280's	198.00
1200-RGM10110S	10 mm x 10 mm, 100 Squares (1 mm ²), 10X Eyepiece	1120's, 1130's, 1250's, 1260's	210.00
1200-RGM10110Z	10 mm x 10 mm, 100 Squares (1 mm ²), 10X Eyepiece	1270's	225.00
1200-RGM10115SZ	10 mm x 10 mm, 100 Squares (1 mm ²), 15X Eyepiece	1120's, 1130's, 1250's, 1260's, 1270's	220.00
1400-RGM100510Ci	10 mm x 10 mm, 400 Squares (0.5 mm ²), 10X Eyepiece	1400's, 1320's, 1330's	220.00
1400-RGM100510F	10 mm x 10 mm, 400 Squares (0.5 mm ²), 10X Eyepiece	1480's	215.00
1400-RGM100510C	10 mm x 10 mm, 400 Squares (0.5 mm ²), 10X Eyepiece	1400's, 1100AMH/L's	179.00
1490-RGM100510C	10 mm x 10 mm, 400 Squares (0.5 mm ²), 10X Eyepiece	1490's	211.00
M1304-K009-1	10 mm x 10 mm, 400 Squares (0.5 mm ²), 10X Eyepiece	1300SL's	226.00
M1304-K010-1	10 mm x 10 mm, 400 Squares (0.5 mm ²), 10X Eyepiece	1300ZL's	215.00
1200-RGM100510C	10 mm x 10 mm, 400 Squares (0.5 mm ²), 10X Eyepiece	1200CM's, 1290's	260.00
1200-RGM100510A	10 mm x 10 mm, 400 Squares (0.5 mm ²), 10X Eyepiece	1240's, 1280's	210.00
1200-RGM100510S	10 mm x 10 mm, 400 Squares (0.5 mm ²), 10X Eyepiece	1120's, 1130's, 1250's, 1260's	225.00
1200-RGM100510Z	10 mm x 10 mm, 400 Squares (0.5 mm ²), 10X Eyepiece	1270's	225.00
1200-RGM100515SZ	10 mm x 10 mm, 400 Squares (0.5 mm ²), 15X Eyepiece	1120's, 1130's, 1250's, 1260's, 1270's	225.00
General Reticles			
1400-RCH10Ci	Crosshair, 0.006 in Line Width, 10X Eyepiece	1400's, 1320's, 1330's	220.00
1400-RCH10F	Crosshair, 0.006 in Line Width, 10X Eyepiece	1480's	215.00
1400-RCH10C	Crosshair, 0.006 in Line Width, 10X Eyepiece	1400's, 1100AMH/L's	179.00
1490-RCH10C	Crosshair, 0.006 in Line Width, 10X Eyepiece	1490's	260.00
M1304-K011-1	Crosshair, 0.006 in Line Width, 10X Eyepiece	1300SL's	211.00
M1304-K012-1	Crosshair, 0.006 in Line Width, 10X Eyepiece	1300ZL's	226.00
1200-RCH10C	Crosshair, 0.006 in Line Width, 10X Eyepiece	1200CM's, 1290's	195.00
1200-RCH10A	Crosshair, 0.006 in Line Width, 10X Eyepiece	1240's, 1280's	198.00
1200-RCH10S	Crosshair, 0.006 in Line Width, 10X Eyepiece	1120's, 1130's, 1250's, 1260's	210.00
1200-RCH10Z	Crosshair, 0.006 in Line Width, 10X Eyepiece	1270's	225.00
1400-RPT10Ci	Pointer, 10X Eyepiece	1400i's, 1300's	220.00
1400-RPT10F	Pointer, 10X Eyepiece	1480's	215.00
1400-RPT10C	Pointer, 10X Eyepiece	1400's, 1100AMH/L's	179.00
1490-RPT10C	Pointer, 10X Eyepiece	1490's	260.00
M1304-K013-1	Pointer, 10X Eyepiece	1300SL's	211.00
M1304-K014-1	Pointer, 10X Eyepiece	1300ZL's	226.00
1200-RPT10C	Pointer, 10X Eyepiece	1200CM's, 1290's	195.00
1200-RPT10A	Pointer, 10X Eyepiece	1240's, 1280's	198.00
1200-RPT10S	Pointer, 10X Eyepiece	1120's, 1130's, 1250's, 1260's	225.00
1200-RPT10Z	Pointer, 10X Eyepiece	1270's	210.00
1100-RPT10C	Pointer, 10X Eyepiece	1109AM/L, 1100AMH/L's, 1102SM	55.00
Application Specific			
1400-RHM10Ci	Howard Mold Count, 10X Eyepiece (Counting Chamber Not Included)	1400's, 1320's, 1330's	220.00
1400-RHM10F	Howard Mold Count, 10X Eyepiece (Counting Chamber Not Included)	1480's	215.00
1200-RHM10C	Howard Mold Count, 10X Eyepiece (Counting Chamber Not Included)	1200CM's, 1290's	195.00
1400-RWB310Ci	Walton & Becket, 3:1 Ratio, 10X Eyepiece	1400i's, 1300's	385.00
1400-RWB310F	Walton & Becket, 3:1 Ratio, 10X Eyepiece	1480's	370.00
1200-RWB310C	Walton & Becket, 3:1 Ratio, 10X Eyepiece	1200CM's, 1290's	360.00
Stage Micrometer/Calibration Plate			
1200-SMM	Scale 1.0 mm, 0.01 mm/0.05 mm/0.1 mm increments	Metric Scale Reticles	258.00
1200-SME	Scale 0.1 in, 0.001 in/0.005 in/0.01 in increments	SAE (English) Scale Reticles	258.00
1200-SMME	1.0 mm/0.1 in, Dual Scale	Metric/SAE Scale Reticles	425.00
1200-SMM-C	Scale 1.0 mm, 0.01 mm/0.05 mm/0.1 mm increments	Metric Scale Reticles	80.00
1200-SM-010	Standard 10-Point Calibration (Minimum 10 Pts) (Micrometer Not Included) NIST Traceable, Serialized, Certificate	Stage Micrometers	390.00



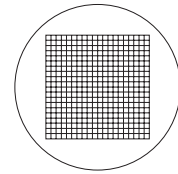
5mm Scale



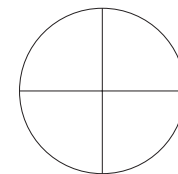
10mm Scale



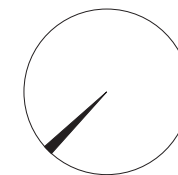
100 Square Grid



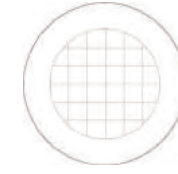
400 Square Grid



Crosshair



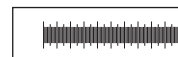
Pointer



Howard Mold Count



Walton & Becket



Stage Micrometer

Porcelain, Crucibles, w/o Cover

VEE GEE® (made by JIPO), High-Form, Glazed Inside & Out Except for Outside Bottom Surface & Rim

Cat. No.	Capacity (mL)	Dimensions Top O.D. X Height	Pack Qty.	List Price (Pack)
52120-0301	10	30 x 25 mm	5	15.25
52120-0351	12	35 x 28 mm	5	16.50
52120-0451	30	45 x 36 mm	5	21.25
52120-0501	45	50 x 40 mm	5	27.50
52120-0601	80	60 x 48 mm	5	32.50
52120-0701	120	70 x 56 mm	5	42.50



Porcelain, Crucible Covers

VEE GEE® (made by JIPO), w/ Ring Handle, Glazed Inside & Out Except for Rim

Cat. No.	Fits Diameter	Pack Qty.	List Price (Pack)
52100-0301	30 mm	5	17.00
52100-0351	35 mm	5	18.25
52100-0451	45 mm	5	24.00
52100-0501	50 mm	5	25.50
52100-0601	60 mm	5	28.75
52100-0701	70 mm	5	35.00



Porcelain, Dishes, Evaporating

VEE GEE® (made by JIPO), Rounded Bottom with Pouring Lip, Glazed Inside & Outside Top Lip. Rim and bottom Unglazed.

Cat. No.	Capacity (mL)	Dimensions Top O.D. X Height	Pack Qty.	List Price (Pack)
52220-6121	30	63 x 25 mm	5	37.50
52220-6201	60	80 x 32 mm	5	44.00
52220-6221	107	81 x 38 mm	5	46.25
52220-6321	150	100 x 40 mm	5	60.00
52220-6401	232	112 x 47 mm	5	81.25



Porcelain, Funnels, Buchner

VEE GEE® (made by JIPO), w/Fixed Perforated Plate, Glazed Inside & Out Except for Rim

Cat. No.	Capacity (mL)	Diameter of Plate (mm)	Diameter of Perf. Area (mm)	Filter Paper Size (cm)	List Price (Each)
53223-7201	70	62	45	5.5	22.75
53223-7301	120	77	58	7.0	27.00
53223-7401	240	97	70	9.0	36.00
53223-7501	400	116	95	11	45.00
53223-7601	600	130	110	12.5	62.00



Porcelain, Mortar & Pestles

VEE GEE® (made by JIPO) Mortar w/ Lip, Glazed Outside Except for Bottom Surface, Pestle Glazed to Grinding Surface

Cat. No.	Mortar/Pestle	Capacity (mL)	Mortar O.D. (mm)	Pestle Length (mm)
53121-1110	Mortar	70	63	NA
53121-3100	Pestle	NA	NA	115
53121-1220	Mortar	160	90	NA
53121-3200	Pestle	NA	NA	135
53121-1320	Mortar	400	125	NA
53121-3400	Pestle	NA	NA	175
53121-1500	Mortar	650	150	NA
53121-3500	Pestle	NA	NA	210



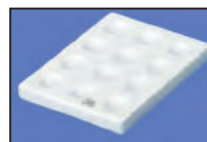
Mortars and Pestles Sold Separately



Porcelain, Spot Plates

VEE GEE® (made by JIPO), Glazed Except for Bottom Surface

Cat. No.	No. of Depressions	Dimensions L x W (mm)	Pack Qty.	List Price (Pack)
53326-3601	12	115 x 91	5	77.50



Desiccator Plates

Bellwether®, w/Center Hole, Glazed Inside & Out Except for Bottom Surface

Cat. No.	Diameter (mm)	Number Of Holes	Pack Qty.	List Price (Pack)
5080-140	140	6	1	7.72
5080-180	180	7	1	13.44



Dishes, Evaporating

Bellwether®, Rounded Bottom with Pouring Lip, Glazed Inside & Out Except for Rim

Cat. No.	Capacity (mL)	Dimensions Top O.D. X Height	Pack Qty.	List Price (Pack)
5020	35	60 x 24 mm	10	52.00
5022	80	80 x 34 mm	10	78.00
5023	120	93 x 40 mm	10	104.00





Polarimeters, Manual

VEE GEE®

Cat. No.	Model	Scale	Range	Resolution/ Accuracy	Lamp/ Wavelength	List Price (Each)
4601P	C25L	Angular°	±180°	0.1°/±0.1°	LED λ=589nm	899.00



Polarimeter Calibration Services

Traceable to National Standards

Cat. No.	Description	For Models	List Price (Each)
2000-040	Calibration to Standard	Polarimeter, Manual Only	360.00

NOTE: For VEE GEE® Polarimeter only, at time of purchase. Calibration service does not include the price of the polarimeter. Calibration service is nonrefundable. Please allow several extra days for delivery.



Polarimeters, Parts & Accessories

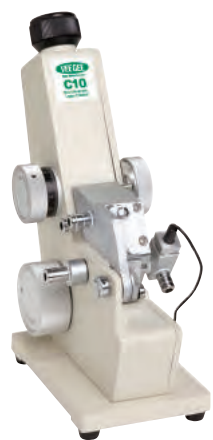
Cat. No.	Description	For Models	List Price (Each)
Sample Cells			
4600P-SC100	Glass w/ Bubble Trap, 100mm, 11ml	C25L	66.00
4600P-SC200	Glass w/ Bubble Trap, 200mm, 18ml	C25L	76.00



Refractometers, Abbe

VEE GEE® C10 Model with New Digital Thermometer

Cat. No.	Model	Scale	Range	Resolution/ Accuracy	List Price (Each)
C10	C10	Brix nD	0-95% 1.3000-1.7200	0.25%/±0.15% 0.0005/±0.00025	895.00



New C10 Model with Digital Thermometer

Refractometers, Abbe, LED / Sodium Light Package for Cat No. C10

VanGuard®

Cat. No.	Wavelength	Light Source	Light Guide	List Price (Each)
44000-LEDNA	589nm	LED	LED / Sodium Filter	425.00

NOTE: Comes standard with Control Unit, two single LED light guides and a single sodium filter.

Cat No. 44000-LEDNA shown with Cat No. C10



Refractometer, Contact Solution, w/ Letter of NIST Traceability Certification

Prices subject to change.

Cat. No.	Type	R.I. Value (25°C)	Bottle Volume	For Models	List Price (Each)
45000-OS001	Bromonaphthalene	1.656 nD	7.4mL / ¼ oz	C10	19.99



New MDX-Series Refractometers:

- Portable
- Compact
- Application Specific!



Refractometers, Portable, Digital, Compact

VEE GEE®, MDX-Series

Cat. No.	Model	Description/Scales	# of Scales	List Price (Each)
48101	MDX-101	nD,Brix , 0.0-50.0%	2	280.00
48102	MDX-102	nD,Brix (wide range) 0.0-90.0%	2	350.00
48103	MDX-103	Sugars: Dextran, Fructose, Glucose, Lactose, Maltose, nD	6	440.00
48201	MDX-201	NaCl %, NaCl PPT, Specific Gravity, nD	4	325.00
48202	MDX-202	Seawater, Chlorinity, Specific Gravity, nD	4	325.00
48301	MDX-301	Honey: Brix, Water, Be', nD	4	390.00
48401	MDX-401	Wine, Brix, % vol ap, Oe, KMW	4	325.00
48602	MDX-602	DEF, Battery Acid, nD	3	310.00
48603	MDX-603	Glycols °C & °F: Prop/Ethyl %, Prop/Ethyl Freeze Point °C & °F	4	390.00

NOTE: MDX-Series digital, portable refractometers are assortable for the 5+ quantity discount.



For Detailed Specifications on our MDX-Series Refractometers:

- Go to veegee.com
- Literature tab
- Refractometers
- MDX-Series Brochure

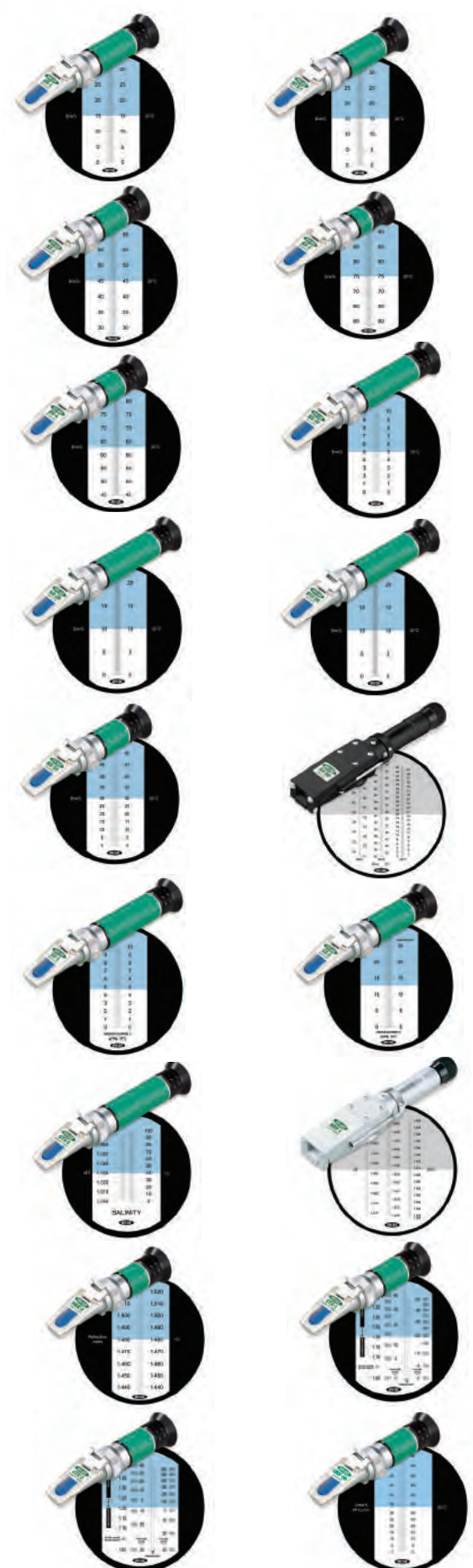




Refractometers, Handheld

VEE GEE®, X-Series, Analog

Cat. No.	Model	Scale	Range	ATC	List Price (Each)
43001	BX-1	Brix	0-32%	No	101.50
43002	BTX-1	Brix	0-32%	Yes	115.00
43003	BX-2	Brix	28-62%	No	101.50
43005	BX-3	Brix	58-92%	No	101.50
43007	BX-4	Brix	45-82%	No	101.50
43009	BX-10	Brix	0-10%	No	101.50
43011	BX-20	Brix	0-20%	No	101.50
43012	BTX-20	Brix	0-20%	Yes	115.00
43015	BX-50	Brix	0-50%	No	101.50
43017	BX-90	Brix	0-90%	No	410.00
43033	SX-1	NaCl	0-10%	No	101.50
43035	SX-2	NaCl	0-28%	No	101.50
43036	STX-3	Salinity	0-100‰	Yes	115.00
43053	NDX-1	nD	1.333-1.517	No	410.00
43055	NDX-2	nD	1.435-1.520	No	101.50
43062	CTX-1	Antifreeze/Coolant	Freezing Point/°C	Yes	115.00
43064	CTX-2	Antifreeze/Coolant	Freezing Point/°F	Yes	115.00
43071	URX-60	Urea	0-60%	No	101.50



NOTE: All handheld analog refractometers are assortable for the 5-49 and 50+ quantity discount.





Refractometers, Parts & Accessories

Cat. No.	Description	For Models	List Price (Each)
43000-DLXX	Daylight Plate Kit	X-Series Handheld Refractometers	25.00
43000-00100	Hard Case	All Handheld Units	7.75
43RP-008	Soft Fabric Carrying Case	X-Series Handheld Refractometers	7.75
1111	Soft Vinyl Carrying Case	BX-1, BTX-1, BX-2, BX-3, BX-4, BX-50, SX-2, NDX-2, CTX-1&2, CDX Series	3.90
1111L	Soft Vinyl Carrying Case	BX-10, BX-20, BTX-20, BX-90, CLX-1, SX-1, STX-3, NDX-1	3.90
45000-OT001	VEE GEE Optical Tissues, 280/Box	All Refractometers	4.75

* Daylight Plate Kit for VEE GEE® Refractometers only. Please specify model of refractometer at time of order. Models BX-90 and NDX-1 do not apply.



Refractometer Calibration Services

Traceable to NIST

Cat. No.	Description	For Models	List Price (Each)
2000-001	Calibration to Standard	Most Analog Handhelds	135.00
2000-002	Calibration to Standard	BX-90, NDX-1	150.00
2000-010	Calibration to Standard	MDX Series	250.00
2000-020	Calibration to Standard	C10	550.00
2000-030	Calibration to Standard	Bench Top	850.00

NOTE: For VEE GEE® Refractometers only, at time of purchase. Calibration service does not include the price of the refractometer. Calibration service is nonrefundable. Please allow several extra days for delivery.

EXAMPLE Certificate of Calibration

CALIBRATION REPORT FOR Refractometer

This report of calibration shall document that the instrument described herein was examined and tested against NIST traceable reference standards in accordance to ASTM. It is calibration meets the requirements of ISO/IEC 17025, ANSI/NCSL Z540-1 and the ISO 9000 series standards.

Date Calibrated: Next Recommended Due Date: Customer Information:	Instrument Description:
Scale Type: Manufacturer: VEE GEE Scientific, Inc. Size: Serial Number:	Results of Physical Examination:
Calibrating Technician:	QC Approval:



Refractometer Standards, w/ Letter Of NIST Traceability Certification

Cat. No.	Type	Brix Value (20°C)	R.I. Value (20°C)	R.I. Value (25°C)	Bottle Volume	List Price (Each)
45000-OS025	Oil	60.0%	1.4420 nD	1.440 nD	7.4mL / ¼ oz	56.50
45000-OS200	Water	0.00%	1.33297 nD	1.33249 nD	7.4mL / ¼ oz	195.00





Thermometers, Dial, 1" Diameter, Multiple Applications, Liquids, Concrete, Snow.

VEE GEE®, Bi-Metal Stem, Accuracy: ±1 Subdivision

Cat. No.	Range	Subdivision	Face Diameter (mm/in)	Stem Length (mm/in)	List Price (Each)
81070	-40 to +70°C	1°C	25/1	127/5	5.15
81110	-10 to +110°C	1°C	25/1	127/5	5.15
81125	+25 to +125°F	1°F	25/1	127/5	5.15
81150	0 to +150°C	2°C	25/1	127/5	5.15
81160	-40 to +160°F	2°F	25/1	127/5	5.15
81220	0 to +220°F	2°F	25/1	127/5	5.15
81250	0 to +250°C	2°C	25/1	127/5	5.15
81550	+50 to +550°F	5°F	25/1	127/5	5.15
81550G	+50 to +550°F	5°F	25/1	127/5	5.15

NOTE: 81000 series dial thermometers come with a plastic case w/ pocket clip. Cat. No. 81550G features a glass face.
NOTE: Clip for Dial Thermometers (used for attaching to containers, tanks, etc.) Sold Separately Cat No. 82999



81550G



81070

Thermometers, Dial, 1.75 / 2" Diameter, Multiple Applications, Liquids, Concrete, More.

VEE GEE®, Bi-Metal Stem, Accuracy: ±1 Subdivision. Comes with Clip (Used for attaching to containers, tanks, etc.)

Cat. No.	Range	Subdivision	Face Diameter (mm/in)	Stem Length (mm/in)	List Price (Each)
82100	0 to +100°C	1°C	45/1.75	203/8	8.90
82100V	-50 to +100°C	2.5°C	45/1.75	203/8	8.90
82110	-10 to +110°C	1°C	45/1.75	203/8	8.90
82125	+25 to +125°F	1°F	45/1.75	203/8	8.90
82150	0 to +150°C	2°C	45/1.75	203/8	8.90
82160	-40 to +160°F	2°F	45/1.75	203/8	8.90
82220	0 to +220°F	2°F	45/1.75	203/8	8.90
82250	0 to +250°C	2°C	45/1.75	203/8	8.90
82250F	+50 to +250°F	2°F	45/1.75	203/8	8.90
82550	+50 to +550°F	5°F	45/1.75	203/8	8.90
82550DG	+10 to +290°C	5°C	51/2	203/8	11.00
	+50 to +550°F	5°F			

NOTE: Cat. No. 82550DG features a glass face and has dual C & F Ranges.
NOTE: Additional Clips for Dial Thermometers Sold Separately Cat No. 82999



Dual Scale / Glass Face

Thermometers, Dial, 3" Diameter, Soil Testing / Liquids / Other.

VEE GEE®, Bi-Metal Stem, Accuracy: ±1 Subdivision

Cat. No.	Range	Subdivision	Face Diameter (mm/in)	Stem Length (mm/in)	List Price (Each)
82160-6	-40 to +160°F	2°F	76/3	152/6	16.80
82160-12	-40 to +160°F	2°F	76/3	305/12	22.05

See our Soil Kit under Applications Kit Page 3



82160-6

Thermometers, Dial, 3" Diameter, Compost Testing / Liquids / Other.

VEE GEE®, Bi-Metal Stem, Soil & Compost Testing, Accuracy: ±1 Subdivision

Cat. No.	Range	Subdivision	Face Diameter (mm/in)	Stem Length (mm/in)	List Price (Each)
82200-36	0 to +200°F	2°F	76/3	914/36	65.00
82200-48	0 to +200°F	2°F	76/3	1220/48	77.50
82200-72	0 to +200°F	2°F	76/3	1830/72	135.50

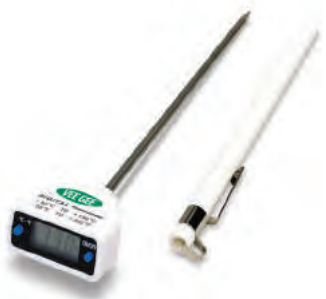




Thermometers, Digital, High Accuracy, Ultra High Accuracy, Long Probe Option

VEE GEE®, °C/°F Scales, Bi-Metal Stem, LCD Readout, On-Off Switch, Face Dimensions: 36 X 17 mm/1.4 x 0.7 in.

Cat. No.	Accuracy Model	Resolution/Accuracy	Range	Stem Length (mm/in)	List Price (Each)
83210	High Acc.	0.1°/±1.0°C & 0.1°/±2.0°F	-50 to +150°C / -58 to +302°F	127/5	21.00
83210-12	High Acc.-12"			300/12	30.00
83110	Ultra Acc.	0.1°/±0.5°C & ±1.0°F	-10 to +100°C / +14 to +212°F	127/5	24.50



Thermometers, General Laboratory

VEE GEE®, Liquid-in-Glass, Spirit-Filled, w/ Non-Roll Fittings, Accuracy: ±1 Subdivision

Cat. No.	Range	Subdivision	Immersion	Backing	List Price (Each)
80501	-20 to +110°C	1°C	Total	White	4.05
80502	-20 to +150°C	1°C	Total	White	4.05
80503	0 to +230°F	2°F	Total	White	4.05
80504	0 to +300°F	2°F	Total	White	4.05
80521	-20 to +110°C	1°C	76 mm	White	4.05
	0 to +230°F	2°F			
80601	-20 to +110°C	1°C	76 mm	White	4.05
80602	-20 to +150°C	1°C	76 mm	White	4.05
80603	0 to +230°F	2°F	76 mm	White	4.05
80604	0 to +300°F	2°F	76 mm	White	4.05
80621	-20 to +110°C	1°C	Total	White	4.05
	0 to +230°F	2°F			
80802	-20 to +110°C	None	Total	White	1.60

Note: 80802 does not have markings. It is intended for educational purposes to learn about temperature readings.



Thermometers, General Laboratory, Pocket, w/ Armor Case

VEE GEE®, Liquid-in-Glass, Spirit-Filled, Blue Plastic Armor Case, Accuracy: ±1 Subdivision

Cat. No.	Range	Subdivision	Immersion	Backing	List Price (Each)
84050	0 to +50°C	1°C	Total	White	5.50
84125	+25 to +125°F	1°F	Total	White	5.50



84050



84125

Thermometers, Maximum-Minimum, Digital Thermo-Hygrometer w/ Clock

VEE GEE®, °C/°F Scales; Accuracy is ± one subdivision. (3 in 1) display shows: Humidity/ Temperature / Time.

Cat. No.	Range	Resolution	Dimensions	List Price (Each)
84004	0 to +50°C +32 to +122°F 20 - 99% Humidity	1.0°C 2.0°F 1%	110 x 98 x 21 mm/ 4.33 x 3.86 x 0.83 in	30.50



Prices subject to change.

80902E
Encapsulated

80907

Thermometers, Serialized, Precision

VEE GEE®, Safety Blue fill, 12" unless noted, Accuracy: ± one subdivision.

Cat. No.	Range	Sub Division	Filled	Approx. Length	Immersion (mm)	Backing	List Price (Each)
80701	-30 to 120° F	2° F	Blue Liquid	12"	Total	White	21.00
80702	-4 to 230° F	2° F	Blue Liquid	12"	Total	White	21.00
80703	0 to 300° F	2° F	Blue Liquid	12"	Total	White	21.00
80706	-35 to 50° C	1° C	Blue Liquid	12"	Total	White	21.00
80707	-20 to 110° C	1° C	Blue Liquid	12"	Total	White	21.00
80708	-20 to 150° C	1° C	Blue Liquid	12"	Total	White	21.00
80901	-30 to 120° F	2° F	Blue Liquid	12"	Partial	White	21.00
80902	-4 to 230° F	2° F	Blue Liquid	12"	Partial	White	21.00
80903	0 to 300° F	2° F	Blue Liquid	12"	Partial	White	21.00
80905	20 to 500° F	2° F	Blue Liquid	15.375"	Partial	White	26.50
80906	-35 to 50° C	1° C	Blue Liquid	12"	Partial	White	21.00
80907	-20 to 110° C	1° C	Blue Liquid	12"	Partial	White	21.00
80908	-20 to 150° C	1° C	Blue Liquid	12"	Partial	White	21.00
80910	-10 to 250° C	2° C	Blue Liquid	12"	Partial	White	26.50

Thermometers, Serialized, Precision, Encapsulated

VEE GEE®, Safety Blue fill, Encapsulated in FEP, Accuracy: ± one subdivision.

Cat. No.	Range	Sub Division	Filled	Approx. Length	Immersion (mm)	Backing	List Price (Each)
80701E	-30 to 120° F, Encapsulated	2° F	Blue Liquid	12"	Total	White	42.00
80702E	-4 to 230° F, Encapsulated	2° F	Blue Liquid	12"	Total	White	42.00
80703E	0 to 300° F, Encapsulated	2° F	Blue Liquid	12"	Total	White	42.00
80704E	30 to 220° F, Encapsulated	2° F	Blue Liquid	15.375"	Total	White	53.00
80706E	-35 to 50° C, Encapsulated	1° C	Blue Liquid	12"	Total	White	42.00
80707E	-20 to 110° C, Encapsulated	1° C	Blue Liquid	12"	Total	White	42.00
80708E	-20 to 150° C, Encapsulated	1° C	Blue Liquid	12"	Total	White	42.00
80901E	-30 to 120° F, Encapsulated	2° F	Blue Liquid	12"	Partial	White	42.00
80902E	-30 to 120° F, Encapsulated	2° F	Blue Liquid	12"	Partial	White	42.00
80903E	-4 to 230° F, Encapsulated	2° F	Blue Liquid	12"	Partial	White	42.00
80904E	0 to 300° F, Encapsulated	2° F	Blue Liquid	15.375"	Partial	White	53.00
80906E	-35 to 50° C, Encapsulated	2° F	Blue Liquid	12"	Partial	White	42.00
80907E	30 to 220° F, Encapsulated	1° C	Blue Liquid	12"	Partial	White	42.00
80908E	-20 to 110° C, Encapsulated	1° C	Blue Liquid	12"	Partial	White	42.00

Thermometers, Serialized, Precision, Armored

VEE GEE®, Safety Blue fill, 12" unless noted, Accuracy: ± one subdivision.

Armor: 2 Part, Nickel Plated Brass

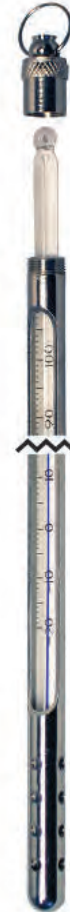
Cat. No.	Range	Sub Division	Filled	Approx. Length	Immersion (mm)	Backing	List Price (Each)
80701-A	-30 to 120° F	2° F	Blue Liquid	12"	Total	White	31.99
80702-A	-4 to 230° F	2° F	Blue Liquid	12"	Total	White	31.99
80703-A	0 to 300° F	2° F	Blue Liquid	12"	Total	White	31.99
80706-A	-35 to 50° C	1° C	Blue Liquid	12"	Total	White	31.99
80707-A	-20 to 110° C	1° C	Blue Liquid	12"	Total	White	31.99
80708-A	-20 to 150° C	1° C	Blue Liquid	12"	Total	White	31.99
80901-A	-30 to 120° F	2° F	Blue Liquid	12"	Partial	White	31.99
80902-A	-4 to 230° F	2° F	Blue Liquid	12"	Partial	White	31.99
80903-A	0 to 300° F	2° F	Blue Liquid	12"	Partial	White	31.99
80905-A	20 to 500° F	2° F	Blue Liquid	15.375"	Partial	White	40.99
80906-A	-35 to 50° C	1° C	Blue Liquid	12"	Partial	White	31.99
80907-A	-20 to 110° C	1° C	Blue Liquid	12"	Partial	White	31.99
80908-A	-20 to 150° C	1° C	Blue Liquid	12"	Partial	White	31.99
80910-A	-10 to 250° F	2° F	Blue Liquid	12"	Partial	White	37.99

Thermometers, Serialized, Precision, Encapsulated, Armored

VEE GEE®, Safety Blue fill, Encapsulated in FEP, Accuracy: ± one subdivision.

Armor: 2 Part, Nickel Plated Brass

Cat. No.	Range	Sub Division	Filled	Approx. Length	Immersion (mm)	Backing	List Price (Each)
80701E-A	-30 to 120° F, Encapsulated	2° F	Blue Liquid	12"	Total	White	54.75
80702E-A	-4 to 230° F, Encapsulated	2° F	Blue Liquid	12"	Total	White	54.75
80703E-A	0 to 300° F, Encapsulated	2° F	Blue Liquid	12"	Total	White	54.75
80704E-A	30 to 220° F, Encapsulated	2° F	Blue Liquid	15.375"	Total	White	70.75
80706E-A	-35 to 50° C, Encapsulated	1° C	Blue Liquid	12"	Total	White	54.75
80707E-A	-20 to 110° C, Encapsulated	1° C	Blue Liquid	12"	Total	White	54.75
80708E-A	-20 to 150° C, Encapsulated	1° C	Blue Liquid	12"	Total	White	54.75
80901E-A	-30 to 120° F, Encapsulated	2° F	Blue Liquid	12"	Partial	White	54.75
80902E-A	-4 to 230° F, Encapsulated	2° F	Blue Liquid	12"	Partial	White	54.75
80903E-A	0 to 300° F, Encapsulated	2° F	Blue Liquid	12"	Partial	White	54.75
80904E-A	30 to 220° F, Encapsulated	2° F	Blue Liquid	15.375"	Partial	White	70.75
80906E-A	-35 to 50° C, Encapsulated	1° C	Blue Liquid	12"	Partial	White	54.75
80907E-A	-20 to 110° C, Encapsulated	1° C	Blue Liquid	12"	Partial	White	54.75
80908E-A	-20 to 150° C, Encapsulated	1° C	Blue Liquid	12"	Partial	White	54.75

Represents:
Thermometer & Armor Kits

NOTE: Non Roll Fittings Sold Separately, Cat No. 82998



Thermometer Armor Cases Only, Nickel-Plated Brass

VEE GEE®, Armor Only

Cat. No.	For Thermometer Length (mm/in)	Type	List Price (Each)
83040N	152/6	2 Part	7.60
83041N	152/6	3 Part	10.35
83025A	305/12	2 Part	11.75
83025B	152/6	2 Part	10.25
83025C	178/7	2 Part	10.20
83025E	229/9	2 Part	13.25
83025F	356/14	2 Part	15.50
83025G	381/15	2 Part	15.50
83025N	393/15.5	2 Part	16.00
83025H	406/16	2 Part	16.00
83025J	457/18	2 Part	17.50
83025M	610/24	2 Part	23.50



Represents:
83025-Series Armor Only

Thermometers, Wall

VEE GEE®, Accuracy is ± one subdivision.

Cat. No.	Type	Thermometer Range	Subdivision	Hygrometer Range	Subdivision	List Price (Each)
85001	Clock w/ Small Thermometer & Hygrometer	-20 to +140°F	5°F	0-100	2	32.50
85002	Thermometer w/Small Hygrometer	-40 to +50°C -40 to +120°F	2°C 2°F	0-100	2	26.75
85003	Thermometer Only	-40 to +50°C -40 to +120°F	2°C 2°F	N/A	N/A	20.75



85001



85002



85003

Thermometer Calibration Services

Traceable to NIST

Cat. No.	Description	Description	List Price (Each)
86-TC01	Certificate of Conformance	Manufacturer's Statement of Thermometer Conformance	95.00
86-CC03	Calibration Certificate	Calibration for up to 3 Individual Thermometer Points	99.00

NOTE: Certification is nonrefundable. Please allow several extra days for delivery.



Thermometer Accessories

VEE GEE®, Clips and Non Roll Fittings

Cat. No.	Description	Description	List Price
82999	Clips (Used for attaching to Containers, tanks, etc.)	Fits on 1", 1.75" and 2" Dial Thermometers	1.95 Ea
82998	Non Roll Fittings	Fits on all Glass Thermometers	2.50 Pk/25



Thermometer Clip and Non Roll Fittings



Thermometer Armor Cases, Blue Plastic

VEE GEE®, Armor Only

Cat. No.	For Thermometer Length (mm/in)	List Price (Each)
83030A	152/6	1.30

Thermometers, General Laboratory

VEE GEE®, Liquid-in-Glass, Spirit-Filled, w/ Non-Roll Fittings, Accuracy: ±1 Subdivision

Cat. No.	Range	Subdivision	Immersion	Backing	List Price (Each)
80802		None	Total	White	1.60

Note: 80802 does not have markings. It is intended for educational purposes to learn about temperature readings.



Support Jacks

VEE GEE®, Anodized Aluminum

Cat. No.	Description	Pack Qty.	List Price (Each)
3050	Support Jack, 140 x 115 mm (5.5 x 4.5 in)	1	82.50
3050-R305	Rod, 305mm for attaching to Plates Only	1	19.26



Prices subject to change.