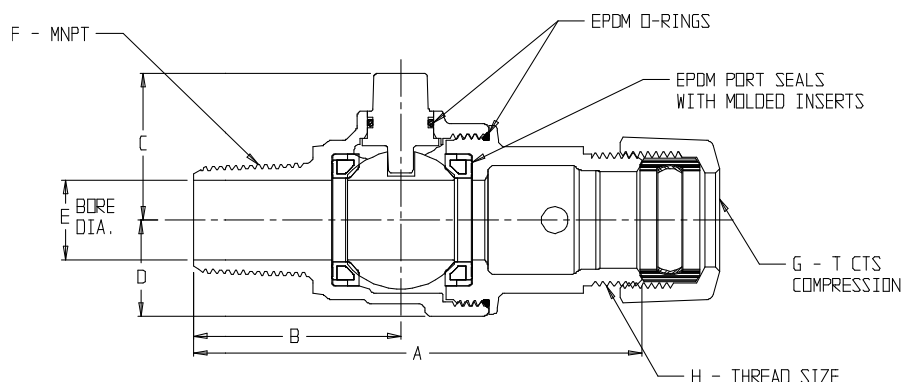
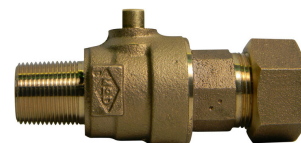


# SUBMITTAL DATA SHEET

NL Ball Style Corporation Stop – 74704BT

MNPT x T CTS Compression



| MODEL     | SIZE      | A    | B    | C    | D    | E    | F     | G     | H                  |
|-----------|-----------|------|------|------|------|------|-------|-------|--------------------|
| 74704BT   | 3/4       | 4.23 | 1.96 | 1.38 | .91  | .75  | 3/4   | 3/4   | 3/4 AWWA FLARE     |
| 74704BT   | 3/4 X 1   | 4.44 | 1.96 | 1.38 | .91  | .75  | 3/4   | 1     | 1 AWWA FLARE       |
| 74704BT   | 1         | 4.43 | 2.11 | 1.50 | 1.15 | 1.00 | 1     | 1     | 1 AWWA FLARE       |
| 74704BT   | 1 1/2     | 6.43 | 3.05 | 2.22 | 1.72 | 1.50 | 1 1/2 | 1 1/2 | 2 1/8 - 16 SPECIAL |
| 74704BT   | 1 1/2 X 2 | 6.97 | 3.05 | 2.22 | 1.72 | 1.50 | 1 1/2 | 2     | 2 5/8 - 16 SPECIAL |
| 74704BT   | 2         | 6.89 | 3.21 | 2.40 | 2.10 | 2.00 | 2     | 2     | 2 5/8 - 16 SPECIAL |
| 74704BTFT | 1 1/2     | 6.09 | 3.05 | 2.22 | 1.72 | 1.50 | 1 1/2 | 1 1/2 | 1 1/2 AWWA FLARE   |
| 74704BTFT | 1 1/2 X 2 | 6.97 | 3.05 | 2.22 | 1.72 | 1.50 | 1 1/2 | 2     | 2 AWWA FLARE       |
| 74704BTFT | 2         | 7.56 | 3.21 | 2.40 | 2.10 | 2.00 | 2     | 2     | 2 AWWA FLARE       |

## SUBMITTAL INFORMATION

- Manufactured in compliance with ANSI/AWWA C800 (latest revision)
- Brass components in contact with potable water conform to ASTM B584, UNS C89833 (latest revision) and identified with "NL"
- Certified to NSF/ANSI 61 and NSF/ANSI 372
- Brass components not in contact with potable water conform to ASTM B62 and ASTM B584, UNS C83600 -85-5-5-5 (latest revision)
- PTFE coated brass ball rotates 360°
- Rated for 300 PSIG water pressure
- Blow out proof EPDM port seals
- End piece joint sealed with an EPDM o-ring and thread locker
- Insert stiffeners required on all flexible plastic connections



**A.Y. McDonald Mfg. Co.**  
P.O. Box 508  
Dubuque, IA 52004-508

**Toll Free:** 1-800-292-2737  
**Fax:** 1-800-832-9296  
**Hours:** 7:00 a.m. – 5:00 p.m., CST

[sales@aymcdonald.com](mailto:sales@aymcdonald.com)  
[www.aymcdonald.com](http://www.aymcdonald.com)

A.Y. McDonald considers the information on this assembly drawing correct when published. Item and option availability, including specifications, are subject to change without notice.

**Submitted by:**