



COMMERCIAL-GRADE

RESIDENTIAL COMBI BOILERS

PROLINE® XE HIGH EFFICIENCY COMBI BOILERS COMMERCIAL-GRADE RESIDENTIAL

Ultra-Low NOx combi boiler provides high efficiency space heating and domestic hot water (DHW) in a compact footprint that's easy to install and maintain.

FEATURES:

95% AFUE

ENERGY STAR® QUALIFIED

AVAILABLE IN NATURAL GAS OR PROPANE (LP)

UP TO 74% MORE SPACE HEATING CAPACITY THAN COMPETITIVE COMBI BOILERS

MODULATING BURNER WITH 10:1 TURNDOWN

POWER DIRECT VENT DESIGN

- 2" up to 60 equivalent feet on the 110 and 150 models only
- 3" up to 100 equivalent feet on all models
- Flexible venting with PVC (solid core), Polypropylene, CPVC, and stainless steel.

INDUSTRY LEADING DHW DELIVERY UP TO 4.8 GPM @ 77°F RISE

FIRE TUBE HEAT EXCHANGER

- Innovative design increases heat transfer
- Lower pressure drop than water tube designs

MAXIMUM WORKING PRESSURE

- 150 PSI DHW
- 50 PSI Boiler

COMPLIES WITH LEAD FREE STANDARDS

USER FRIENDLY CONTROLS

- Programming the combi boiler takes less than two minutes and uses plain text rather than number codes.

AIR HANDLER INTERLOCK

- Priority control for DHW

QUICKER DHW RESPONSE

- Advanced control technology prevents the cold water sandwich often found with other combi boilers.

ACCESSORIES

- Low Water Cut-off with Manual Reset and Test
- Neutralizer Kit
- Isolation Valve Kit
- Concentric Termination
- Sidewall Vent Termination
- Product Preservers® Anti-Scale System
- Floor Stand
- Outdoor Temperature Sensor
- Natural Gas to LP Conversion Kit

WARRANTY

- 10-year limited warranty on heat exchanger in residential applications
- 5-year limited warranty on all parts

INDOOR MODELS



SOLID. STATE.



Model Number*	Gas Consumption Input		AFUE%	Heating Capacity BTU/H	Net AHRI Rating BTU/H**	Minimum in. W.C.†	Maximum in. W.C.	GPM at 77°F Rise	Water Connections		Gas Connection	Approx. Shipping Weight (lbs)
	Minimum BTU/H	Maximum BTU/H							Space Heating	DHW		
Indoor Models												
SCB-110S-N	11,000	110,000	95.0	102,000	89,000	4.0	14.0	2.6	1" NPT	3/4" NPT	1/2" NPT	139
SCB-150S-N	15,000	150,000	95.0	139,000	121,000	4.0	14.0	3.6	1" NPT	3/4" NPT	1/2" NPT	142
SCB-199S-N	19,999	199,999	95.0	185,000	161,000	4.0	14.0	4.8	1" NPT	3/4" NPT	1/2" NPT	159

*S Models can operate up to 4,500'. For high altitude (3,000' - 9,600'), change S to H. For liquid propane (LP), change N to P.

†For LP, minimum supply pressure is 8.0 in. W.C.

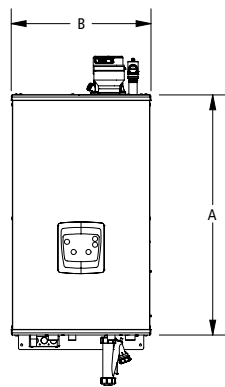
**The Net AHRI Water Ratings shown are based on a piping and pickup allowance of 1.15.

The manufacturer should be consulted before selecting a boiler for installations having unusual piping and pickup requirements, such as intermittent system operation, extensive piping systems, etc. The ratings have been determined under the provisions governing forced draft boilers.

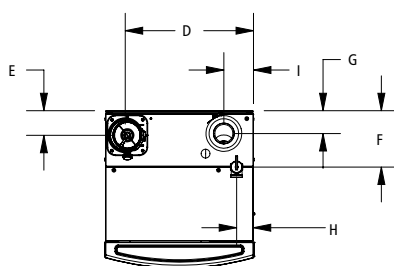
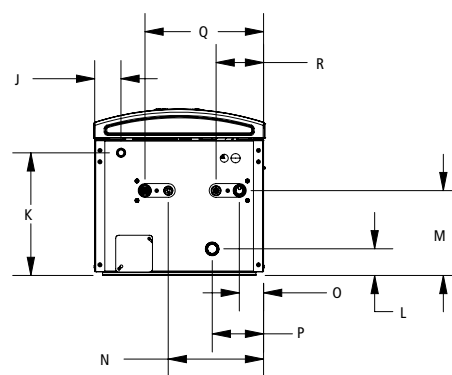
Model Number	Dimensions									
	A	B	C	D	E	F	G	H	I	
SCB-110S-N	32-1/2"	17-1/4"	18"	14-3/4"	2-3/4"	6-1/2"	2-3/4"	2"	3-1/2"	
SCB-150S-N	32-1/2"	18-3/4"	18"	6-3/4"	2-3/4"	6-3/4"	11-3/4"	2-1/2"	6-1/4"	
SCB-199S-N	32-1/2"	18-3/4"	18"	5-1/2"	2-3/4"	6-3/4"	11-1/2"	2-1/4"	5-1/2"	

Model Number	Dimensions									
	J	K	L	M	N	O	P	Q	R	
SCB-110S-N	8-3/4"	13-1/2"	2-3/4"	9"	10-1/2"	5"	14-1/2"	12-3/4"	5"	
SCB-150S-N	2-3/4"	13-1/2"	3"	9"	11-1/2"	5"	6-1/4"	13-3/4"	6"	
SCB-199S-N	2-3/4"	13-1/2"	2-3/4"	9-1/2"	10-1/2"	2-3/4"	5-1/2"	13"	5-1/4"	

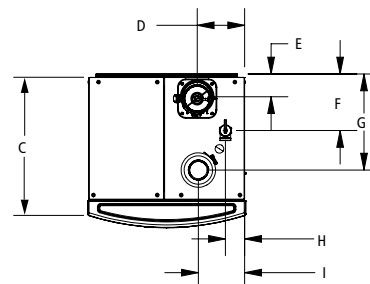
FRONT



BOTTOM



TOP
110 Models



TOP
150-199 Models

FOR MORE INFORMATION ON CALL 1-800-365-0024. STATE WATER HEATERS RESERVES THE RIGHT TO MAKE PRODUCT CHANGES OR IMPROVEMENTS WITHOUT PRIOR NOTICE.