

PRESSURE BALANCE SHOWER SET

SKU: 948667



FEATURES

- Material: Brass
- Shape: Square
- Handle Type: Lever
- Assembly Required: No
- Installation Type: Wall
- Shower Head Material: ABS
- Shower Head Spray: Rainfall
- Shower Arm Included: Yes
- Shower Head Swivel: Yes
- Metal Handle
- Extension Kit Available: ACF4001EXT
- Optional Rough-In Valve
- Shower Head Flow Rate: 1.8 gpm
(6.8L/min) max @ 80 psi

SIGNATURE HARDWARE Lifetime Warranty

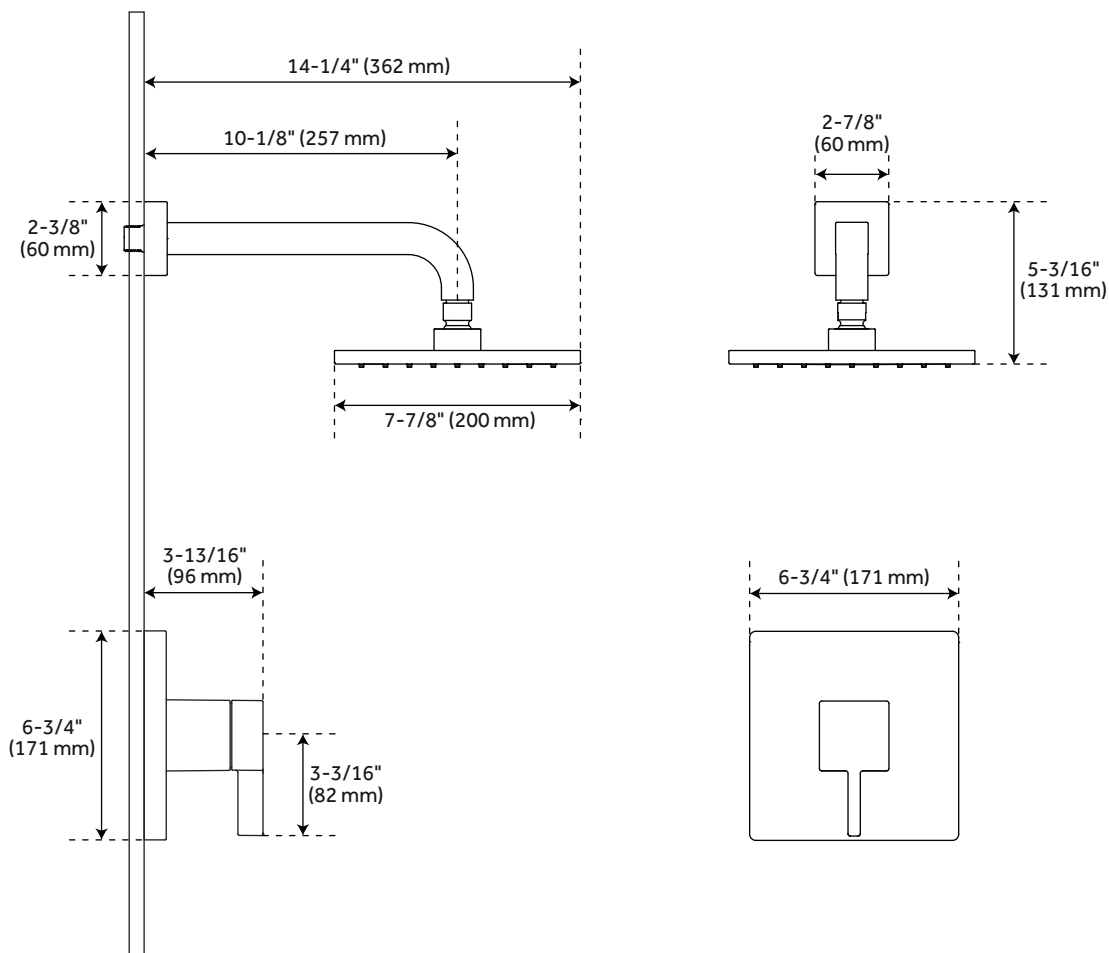
See website for detailed warranty information.

CONTENTS

| | | |
|------------|-------|--------|
| SHOWER SET | | PAGE 2 |
| VALVE | | PAGE 3 |

PRESSURE BALANCE SHOWER SET

SKU: 948667



FEATURES

Shower Head Length: 7-7/8"
 Shower Head Width: 7-7/8"
 Shower Arm Extension: 10-1/8"
 Shower Head IPS: 1/2"
 Valve Trim Width: 6-3/4"
 Valve Trim Height: 6-3/4"
 NPT Connection: 1/2"

CODES/STANDARDS

cUPC
 ASME A112.18.1/CSA B125.1
 ICC/ANSI A117.1 (when installed according
 to ADA standards)
 WaterSense
 CEC Listed
 Massachusetts Accepted

SIGNATURE HARDWARE LIFETIME WARRANTY

See website for warranty information

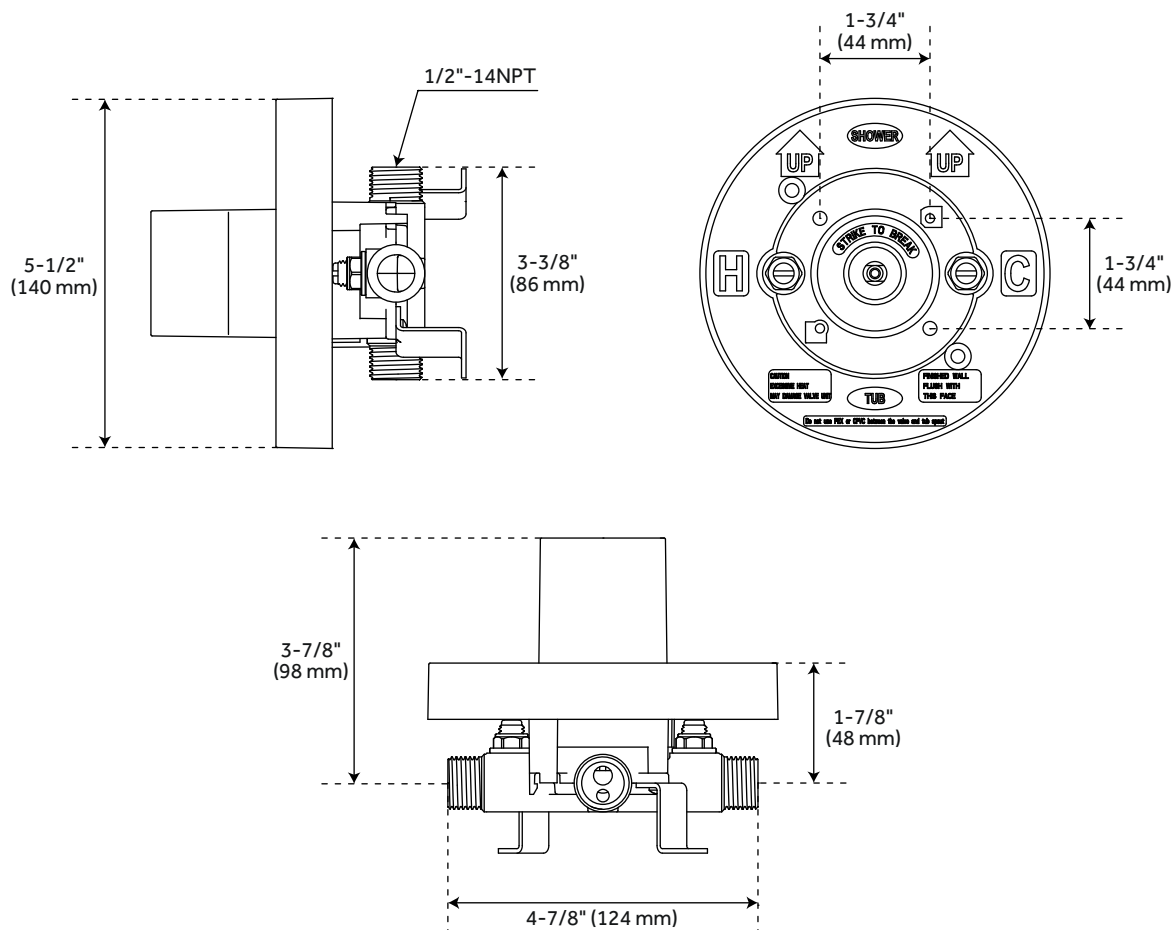


All dimensions and specifications are nominal and may vary. Use actual products for accuracy in critical situations.

PAGE 2
 Code: SHRI8020GBN/SHRI8020GCP

OPTIONAL PRESSURE BALANCE TUB AND SHOWER ROUGH IN VALVE

SKU: 948667



FEATURES

- Pressure Balance Valve With Integral Stops
- One-Piece Cartridge Design For Ease Of Maintenance
- Back-To-Back Capability
- Ceramic Disc Valve Cartridge
- Cast Bronze Valve Body
- Adjustable Temperature Limit Stop
- Quick Remove Plaster Guard
- Easy Mounting Brackets
- Check Valve
- ACF4001STOP: Replacement

CODES/STANDARDS

- cUPC
- ASME A112.18.1/CSA B125.1
- Massachusetts Accepted

SIGNATURE HARDWARE LIFETIME WARRANTY

See website for warranty information



All dimensions and specifications are nominal and may vary. Use actual products for accuracy in critical situations.

PAGE 3
Code: SH4001