

# LIMROCK

## SLIDING SHOWER DOOR

SKU: 949146

### BEFORE YOU BEGIN

We recommend consulting a professional if you are unfamiliar with installing plumbing fixtures. Signature Hardware accepts no liability for any damage to the shower tray, wall, or for personal injury during installation.

Observe all local plumbing and building codes.

Unpack and inspect the product for shipping damage. If any damage is found, contact our Customer Relations team at 1-866-855-2284.

### GETTING STARTED

- Ensure that you have gathered all the required materials that are needed for the installation.

### BEFORE INSTALLATION

For these instructions, it is assumed that the shower floor and finished walls/tile are in place.

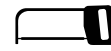
Shower threshold needs to have a flat surface of 2-3/4".

Not recommended for cast iron or enameled steel shower tray.

### TOOLS AND MATERIALS:



Pencil



Hacksaw



Phillips  
Screwdriver



Safety Glasses



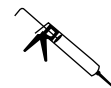
Tape Measure



Level



Drill



Silicone Sealant  
(100% Neutral Cure)



Cutting Pliers



1/4" Drill Bit



1/8" Drill Bit

REVISED 01/06 /2020

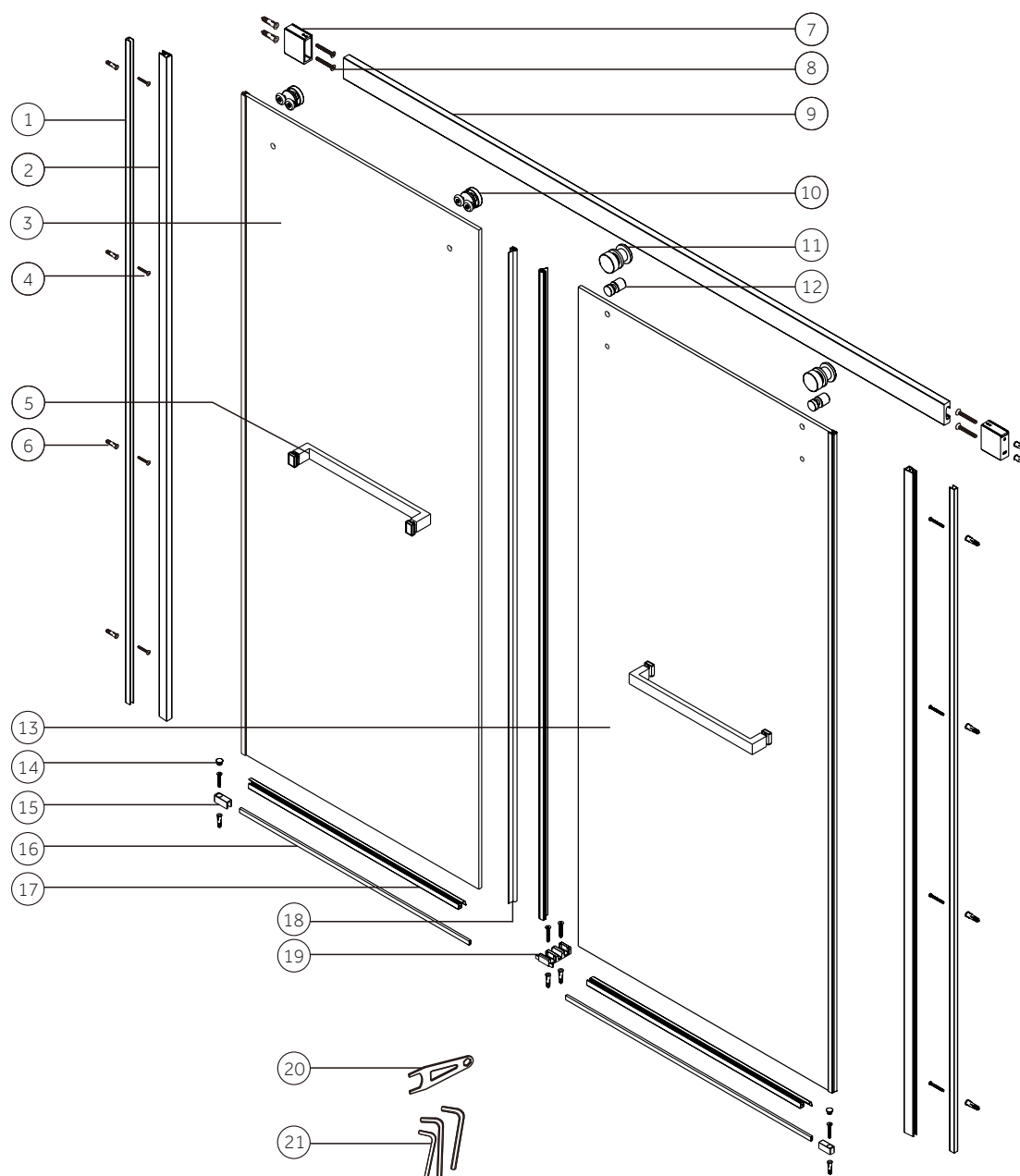
CODES: 525125, 525126, 525128, 525129, 528314, 528315

# LIMROCK

## SLIDING SHOWER DOOR

SKU: 949146

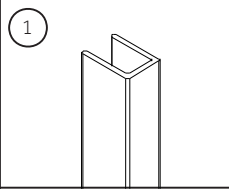
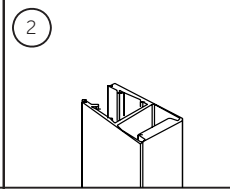
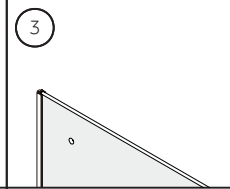
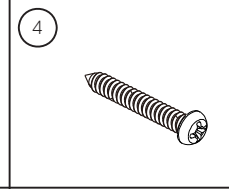
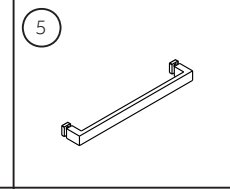
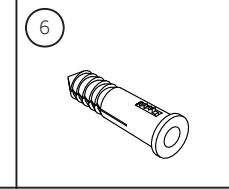
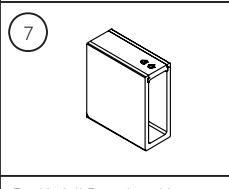
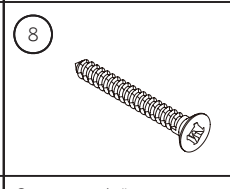
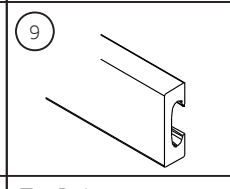
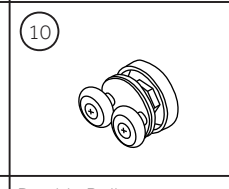
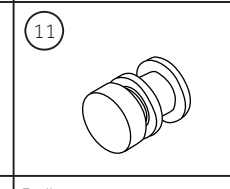
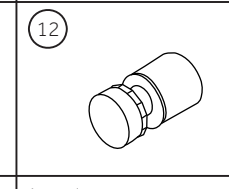
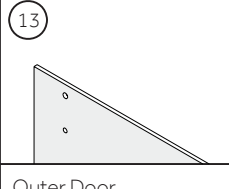
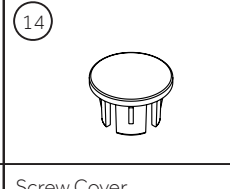
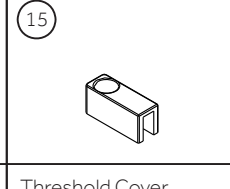
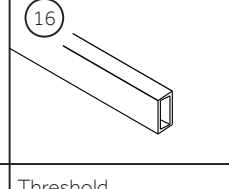
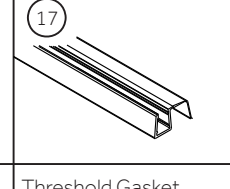
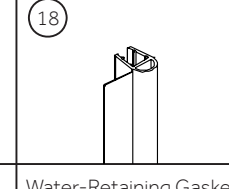
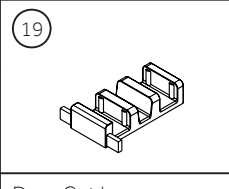
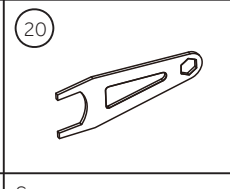
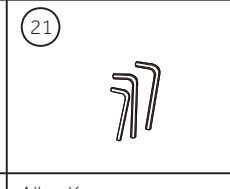
**Note:** Every step applies to both the left side assembly and the right side.



# LIMROCK

SLIDING SHOWER DOOR  
SKU: 949146

PART LIST

					
Magnetic Aluminum	180° Magnet Seal Short	Inner Door	Screw 1 1/4"	Handle	Wall Anchor
					
Rail Wall Bracket Kits	Screw 1 1/4"	Top Rail	Double Roller	Roller	Anti-Jumper
					
Outer Door	Screw Cover	Threshold Cover	Threshold	Threshold Gasket	Water-Retaining Gasket
					
Door Guide	Spanner	Allen Keys			

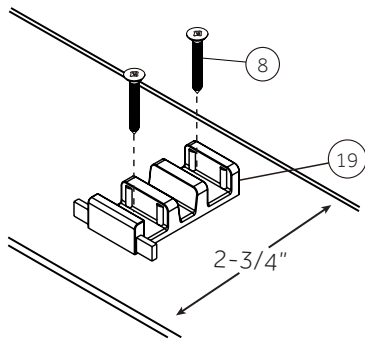
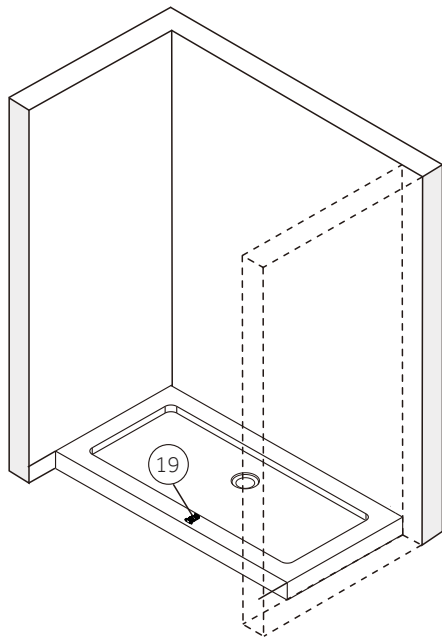
# LIMROCK

## SLIDING SHOWER DOOR

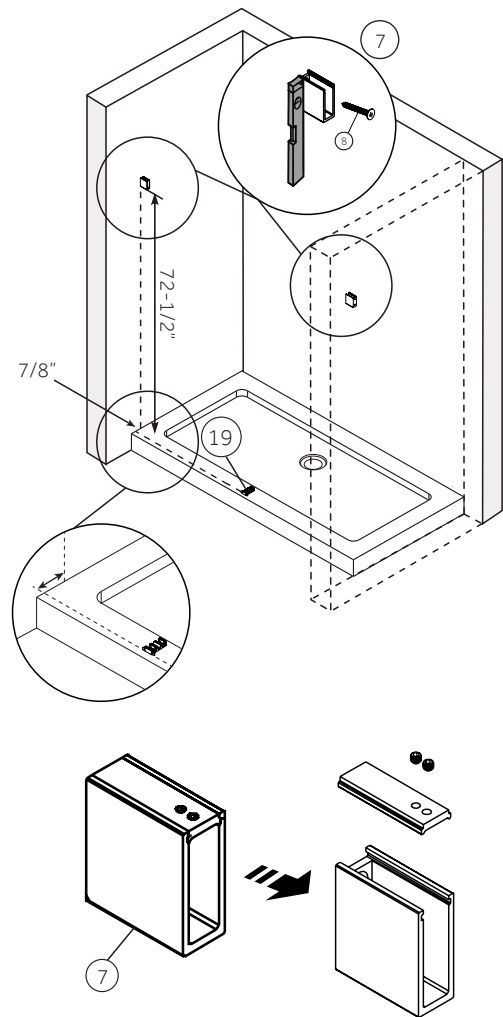
SKU: 949146

### INSTALLATION

1. Locate the center of the tray, draw and mark the installation hole and position line of door guide (19). Be sure that there is equal distance both from left to right and front to back on tray. Drill installation hole with 1/8" drill bit. Attach door guide (19) to tray with 1-1/4" screw (8).



2. Disassemble the rail wall bracket kit (7) as shown. The mounting bracket kit (7) should be mounted 7/8" back from front edge of door guide (19). The mounting bracket should be mounted 72-1/2" from the floor as shown. Drill installation hole with 1/4" drill bit. Apply a small amount of silicone sealant to the installation hole, then insert wall anchor (6). Attach rail wall bracket against the wall with 1-1/4" screw (8).



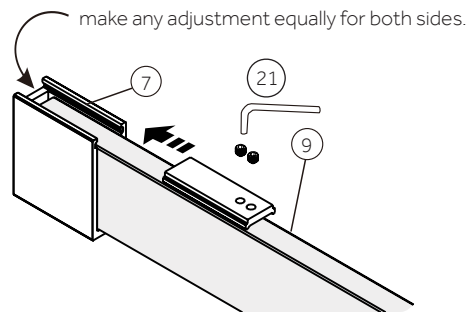
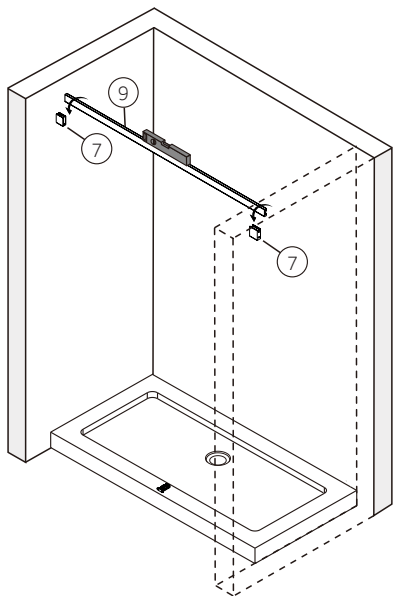
# LIMROCK

## SLIDING SHOWER DOOR

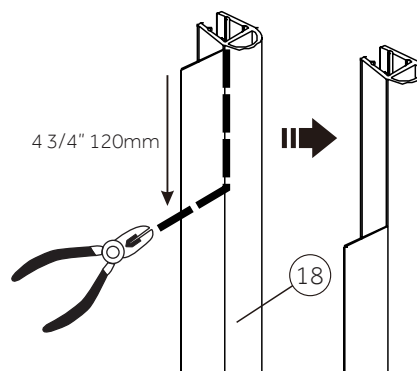
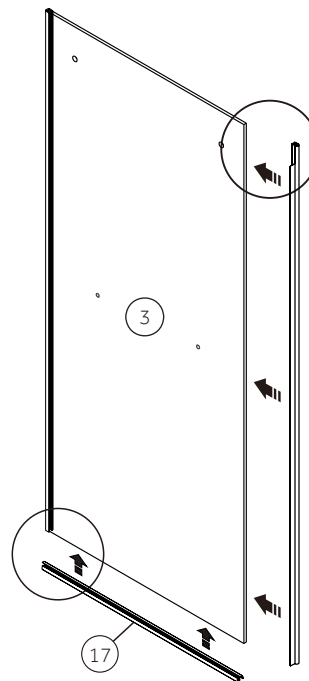
SKU: 949146

3. Insert top rail (9) into rail wall bracket (7). Using a level, ensure top rail is leveled. Install rail into rail wall bracket (7) with allen key (21).

**Note:** Minimum measurement for brackets and rail is 58", some trimming of the rail may be necessary depending on your installation.



4. Install threshold gasket (17) at the bottom of inner door (3). Using cutting pliers, trim the top 4-3/4" strip of the water-retaining gasket (18). Be sure to not cut the U-shaped portion of the gasket. Install water-retaining gasket (18) on inner glass.

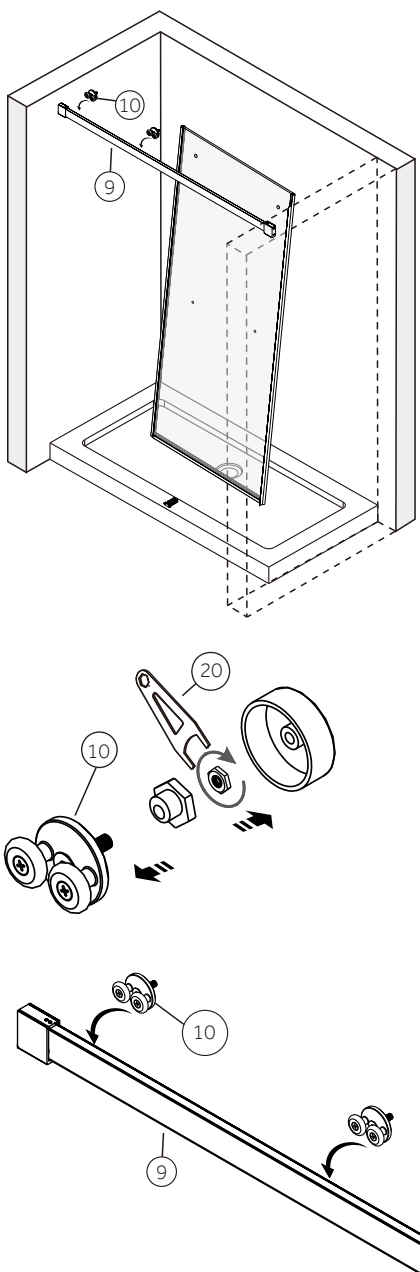


# LIMROCK

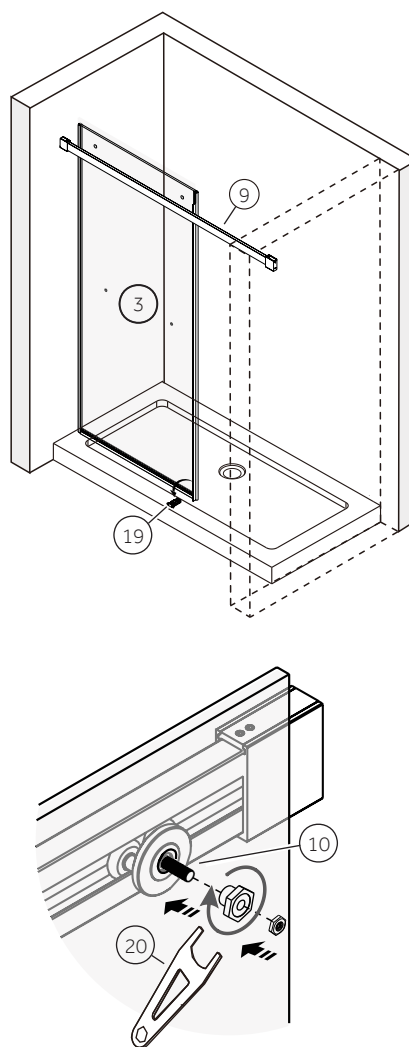
## SLIDING SHOWER DOOR

SKU: 949146

5. Disassemble double roller (10) as shown. Install the double roller onto the slot of the top rail (9).



6. Insert inner door (3) onto the door guide (19) slot. Attach the inner door panel (3) to the top rail (9) with the double roller (10). Tighten the hexagonal nut with spanner (20).

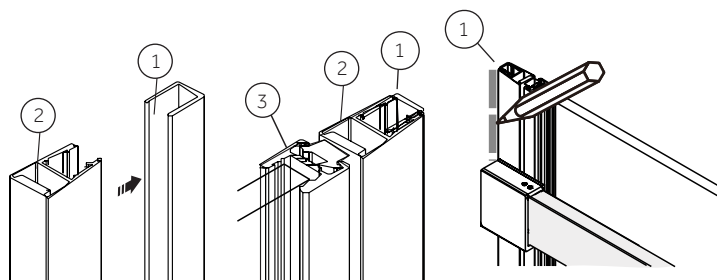
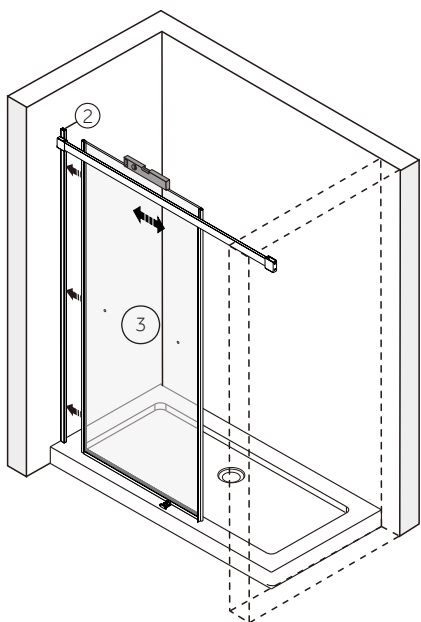


# LIMROCK

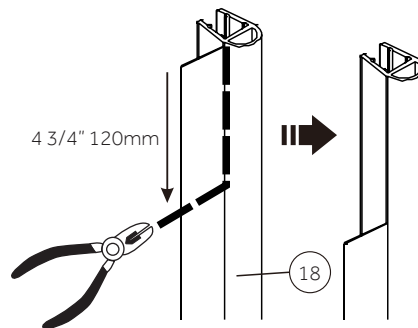
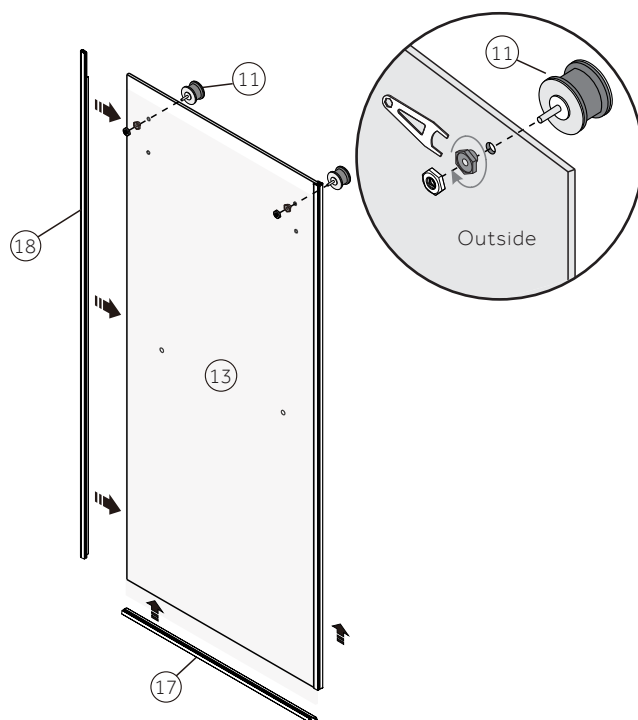
## SLIDING SHOWER DOOR

SKU: 949146

7. Make sure 180° magnet seal short (2) and the magnetic aluminum (1) attract to each other, adjusting the roller if there is any gap. Attach 180° magnet seal short (2) to inner door (3) and slide closed. Mark position of the magnetic aluminum (1) at the wall. Remove magnetic aluminum (1) from 180° magnet seal short (2). Position magnetic aluminum (1) on mounting line and mark the mounting hole. Drill installation hole using 1/4" drill bit. Apply a small amount of silicone sealant to the installation hole and insert the wall anchor. Attach magnetic aluminum (1) against the wall with screw 1-1/4" (4).



8. Install roller (11) on outer door (13), then tighten with spanner. Install threshold gasket (17) at the bottom of outer door (13). Using cutting pliers, trim the top 4-3/4" strip of the water-retaining gasket (18). Be sure to not cut the U-shaped portion of the gasket. Install water-retaining gasket (18) on outer glass (13).

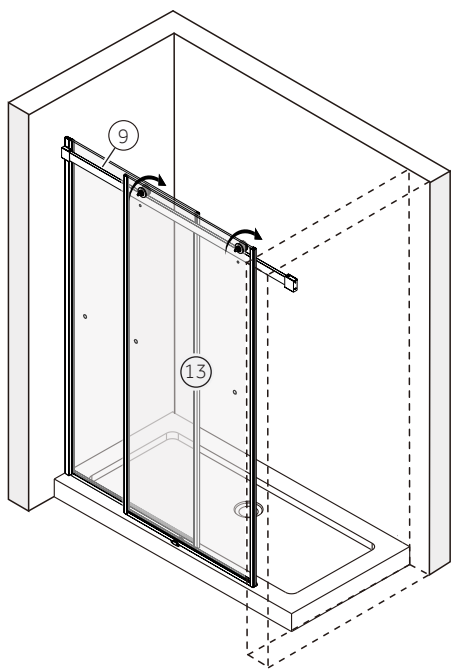


# LIMROCK

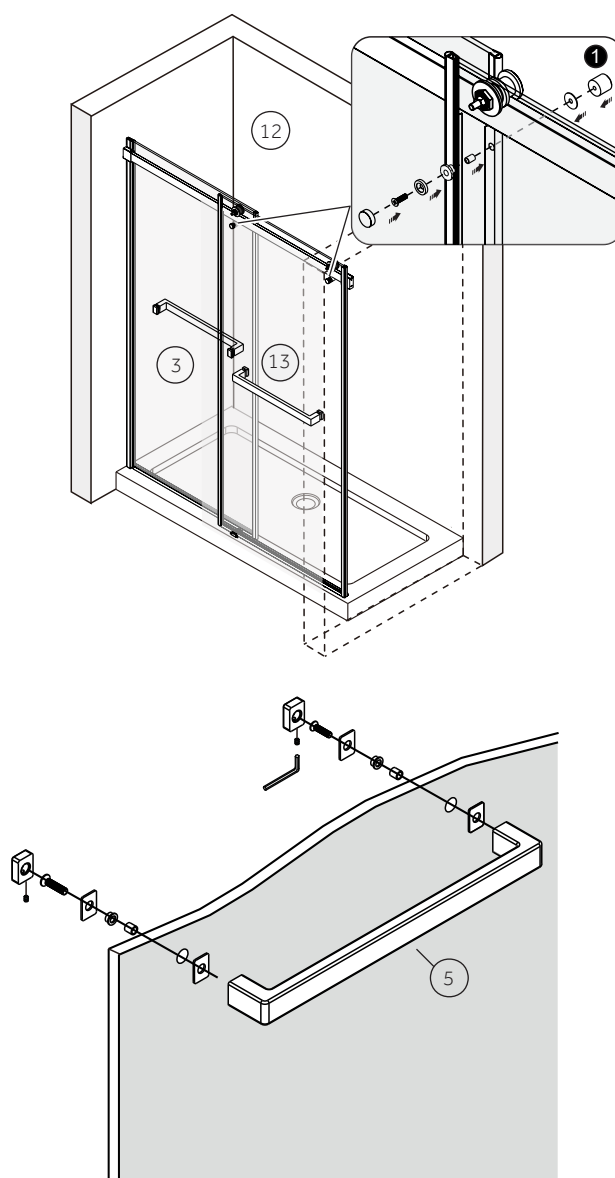
## SLIDING SHOWER DOOR

SKU: 949146

9. Install outer door (13) onto the top rail (9). Using level, ensure outer door (13) is leveled.



10. Install anti-jumper (12) on outer door (13). Install handle (5) on doors (3/13) as shown.



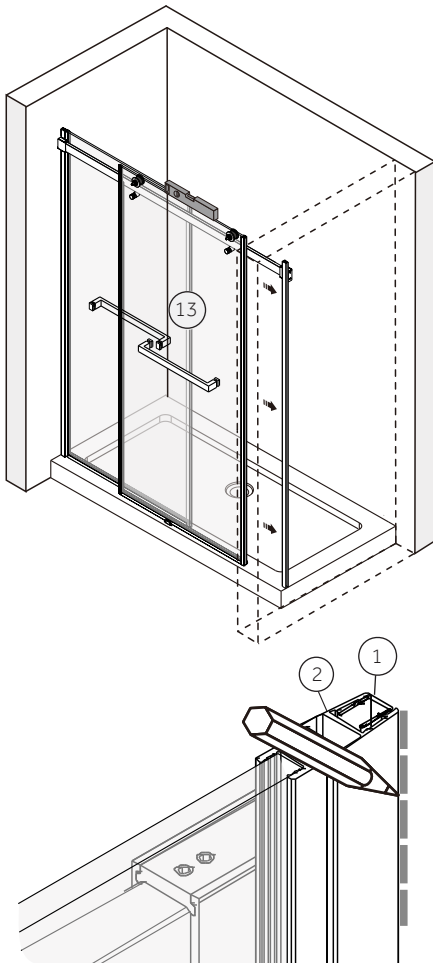


# LIMROCK

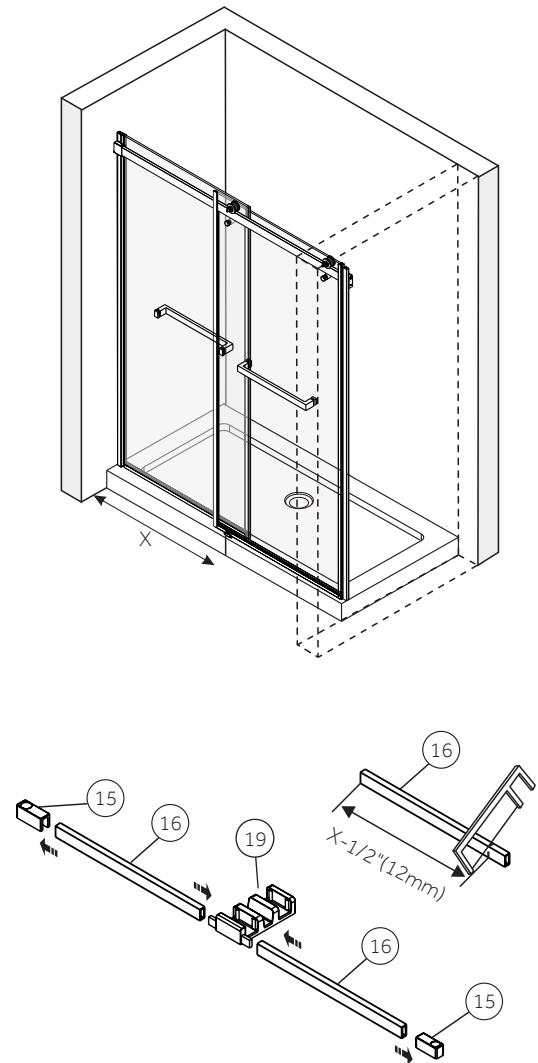
## SLIDING SHOWER DOOR

SKU: 949146

11. Make sure 180° magnet seal short (2) and the magnetic aluminum (1) attract to each other, adjusting the roller if there is any gap. Attach 180° magnet seal short (2) and outer door (13). Mark position of the magnetic aluminum (1) at the position line and mark the mounting hole. Drill installation hole using 1/4" drill bit. Put a small amount of silicone into the installation hole and insert the wall anchor. Attach magnetic aluminum (1) against the wall with screw 1-1/4" (4).



12. Note distance from wall to door guide (19), then cut threshold (16) to your noted distance less 1/2". Mark a hole for the threshold cover (15) for installation. Drill installation hole with 1/8" drill bit. Attach threshold cover (15) to shower tray with 1-1/4" screw (8).



# LIMROCK

## SLIDING SHOWER DOOR

SKU: 949146

13. Apply a continuous bead of silicone sealant to sliding door assembly. Do not open or close for 24 hours while sealant cures.

