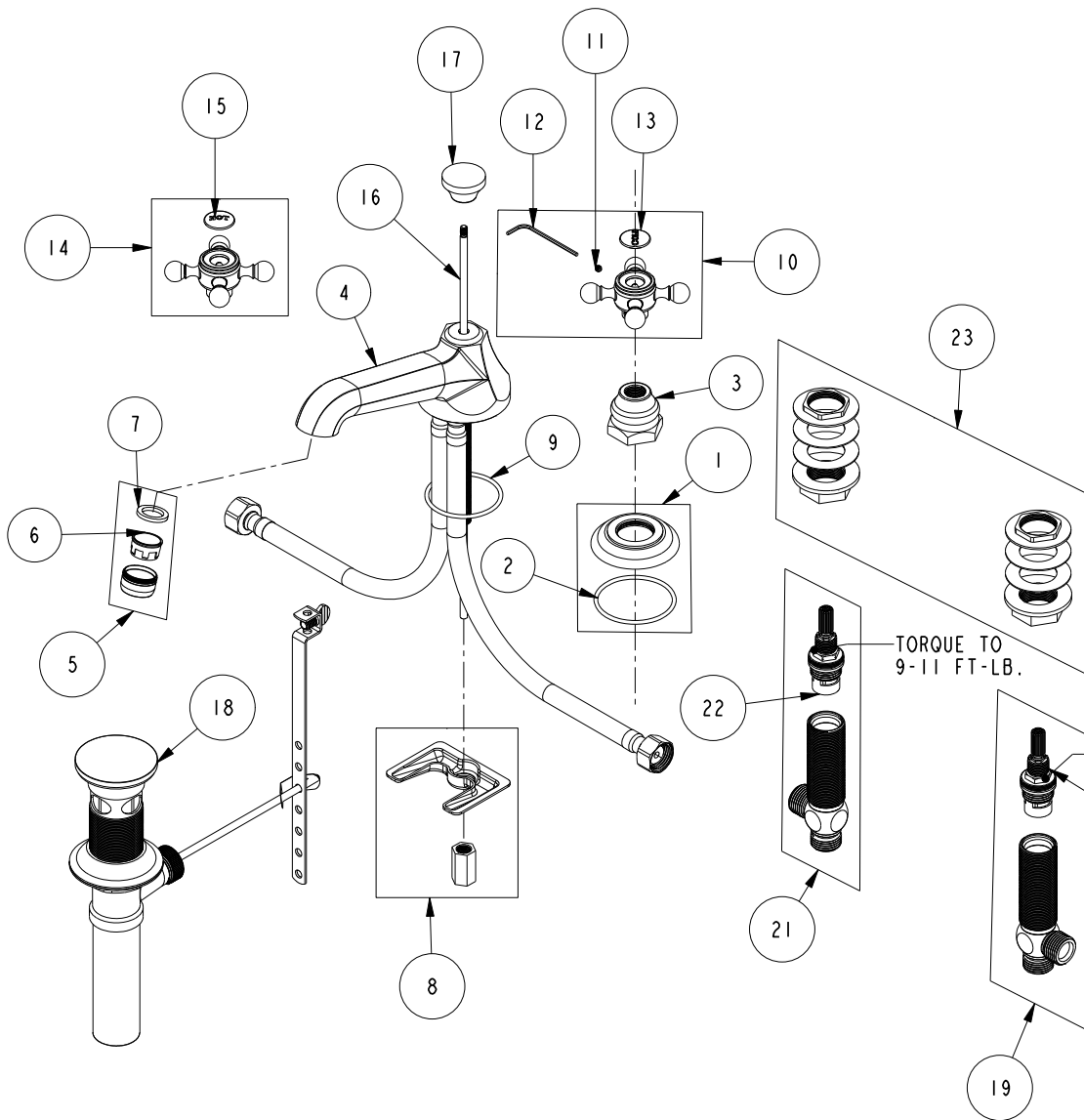


REPLACEMENT PARTS



ITEM	PT/ASSY	SPECIFY FINISH	DESCRIPTION
1	20-681	YES	ESCUTCHEON ASSEMBLY
2	91753		O-RING, # 2-136, EP, 50 DURO - GREY
3	10523	YES	HEX ESCUTCHEON BONNET
4	3-346	YES	ASSY, SPOUT
5	2-627	YES	AERATOR ASM
6	12404		AERATOR INSERT, STD SIZE, 1.2 GPM
7	91014		WSHR, .59 ID X .84 OD X .095 THK, FLT, RUBBER NSF 61
8	1-514		SPOUT MOUNTING KIT ASM
9	91756		O-RING #2-134, EP, 50 DURO - GREY
10	2-142	YES	HANDLE ONLY, COLD
11	92000		SCREW 8 - 32 X 1/8 SS
12	10192		HEX KEY TOOL, #8 5/64
13	1-107		COLD BUTTON ASSEMBLY W/ ADHESIVE
14	2-141	YES	HANDLE ONLY, HOT
15	1-108		HOT BUTTON ASSEMBLY W/ ADHESIVE
16	10288	YES	3/16" POP UP ROD
17	10961	YES	SMOOTH POP - UP KNOB
18	325	YES	POP UP ASSEMBLY
19	1-527		W/S CART/BODY ASM (HOT)
20	1-002		W/S CARTRIDGE - HOT
21	1-526		W/S CART/BODY ASM (COLD)
22	1-001		W/S CARTRIDGE - COLD
23	1-027		WIDE SPREAD MOUNTING HARDWARE

TORQUE TO
9-11 FT-LB.

TORQUE TO
9-11 FT-LB.

TOP ASSY, FAUCET, WIDESPREAD
920

REV J EN-4728 11/02/23 APPROVED RS

NEWPORT BRASS.

t: 949.417.5207 | www.newportbrass.com