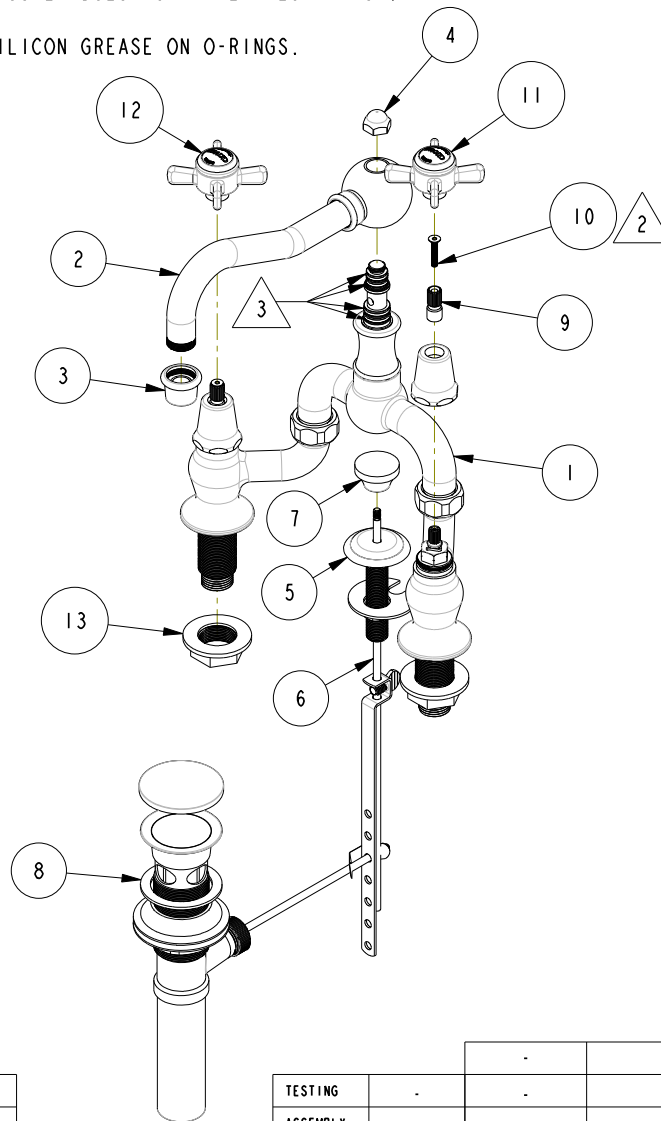


NOTES:

1. FIT / FORM / FUNCTION SHALL FOLLOW PS-E.008.

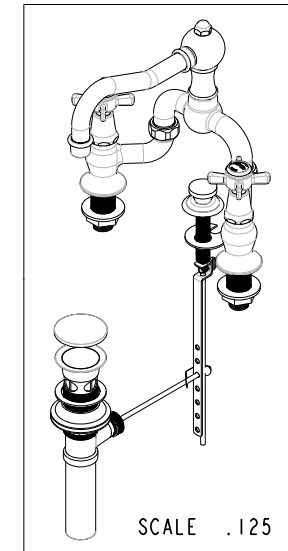
2 APPLY LOCTITE 242 IF SCREW DOES NOT HAVE NYLON PATCH.

3 APPLY THIN COAT OF SILICON GREASE ON O-RINGS.



BILL OF MATERIAL (CURRENT LEVEL)

ITEM	PT/ASSY	DESCRIPTION	TYPE	QTY.
1	3-276	BRIDGE BODY ASM	ASSEMBLY	1
2	2-398	SPT ASM LAV BRIDGE	ASSEMBLY	1
3	2-648	AERATOR ASM	ASSEMBLY	1
4	11066	RISER NUT	PART	1
5	2-400	POP UP GUIDE ASM	ASSEMBLY	1
6	10288	3/16" POP UP ROD	PART	1
7	10961	SMOOTH POP - UP KNOB	PART	1
8	325	POP UP ASSEMBLY	ASSEMBLY	1
9	12062	ADAPTER - 20-T X 16-T	PART	2
10	92539	SCRW, M4X22 FLAT HD SOCKET HD CAP	PART	2
11	2-115	THIN BLADE X - HANDLE COLD	ASSEMBLY	1
12	2-114	THIN BLADE X - HANDLE HOT	ASSEMBLY	1
13	91473	FLANGE NUT 1.006"-20	PART	2



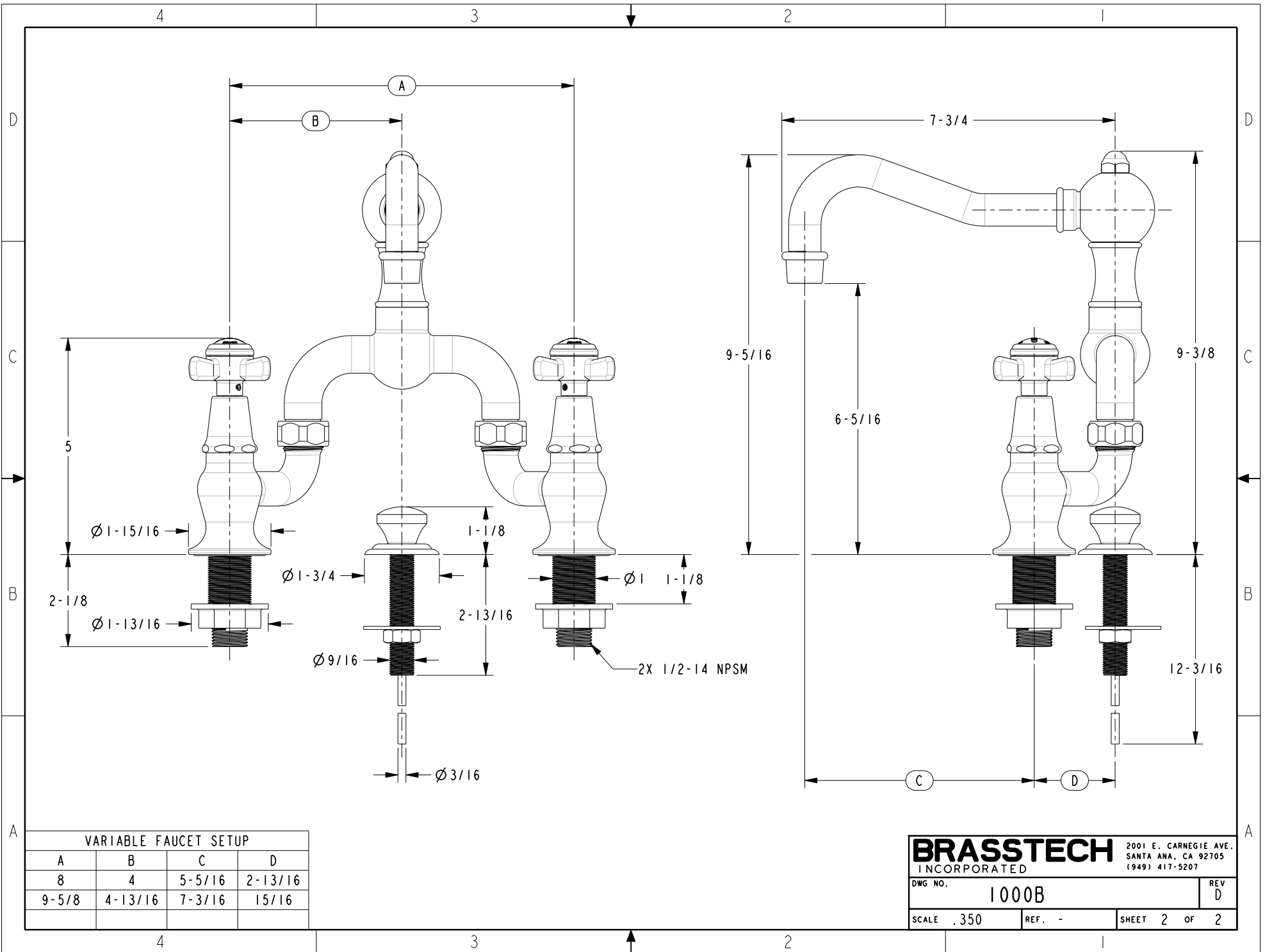
ZONE	REV	DESCRIPTION	DATE	APPROVED
-	D	EN-2909	06/19/17	AN
-	C	EN-1919a	08/12/14	VV
-	B	EN-1358	02/15/10	-
-	A	EO-0447	01/10/05	-
-	-	RELEASED	05/12/03	-

COPYRIGHT 2005 BRASSTECH, INC. THESE DRAWINGS AND THE DESIGNS DEPICTED HEREIN ARE THE PROPRIETARY PROPERTY OF BRASSTECH. ANY USE OR REPRODUCTION IS SUBJECT TO THE EXPRESS APPROVAL OF BRASSTECH. UNAUTHORIZED USE IS STRICTLY PROHIBITED. ALL RIGHTS RESERVED.

TESTING	ASSEMBLY	PLATING	POLISHING	MACHINING	TOOLING FIXTURE #
-	-	-	-	-	-
-	-	-	-	-	-
-	-	-	-	-	-
-	-	-	-	-	-
-	-	-	-	-	-
-	-	-	-	-	-
-	-	-	-	-	-

UNITS ARE:	INCHES	[MM]
TOLERANCES ARE: <td>FRACTIONS</td> <td>DECIMALS</td>	FRACTIONS	DECIMALS
	±1/16"	.X ±.1 (2.5)
		.XX ±.06 (1.5)
(X.XXX) DENOTES CRITICAL DIMS.		
ALL THREADS ARE CRITICAL		
DRAWN	AN	05/15/17
CHECKED	AN	05/15/17
APPROVED	AN	05/15/17

BRASSTECH		2001 CARNEGIE AVE. SANTA ANA, CA 92705 (949) 417-5207	
INCORPORATED			
LAV BRIDGE FAUCET			
DWG. NO.		REV	
1000B		D	
SCALE	REF.	SHEET	OF
.200	-	1	2



VARIABLE FAUCET SETUP

A	B	C	D
8	4	5-5/16	2-13/16
9-5/8	4-13/16	7-3/16	15/16

BRASSTECH 2001 E. CARNEGIE AVE.
 INCORPORATED SANTA ANA, CA 92705
 (949) 417-5207

DWG NO. 1000B REV D

SCALE .350 REF. - SHEET 2 OF 2