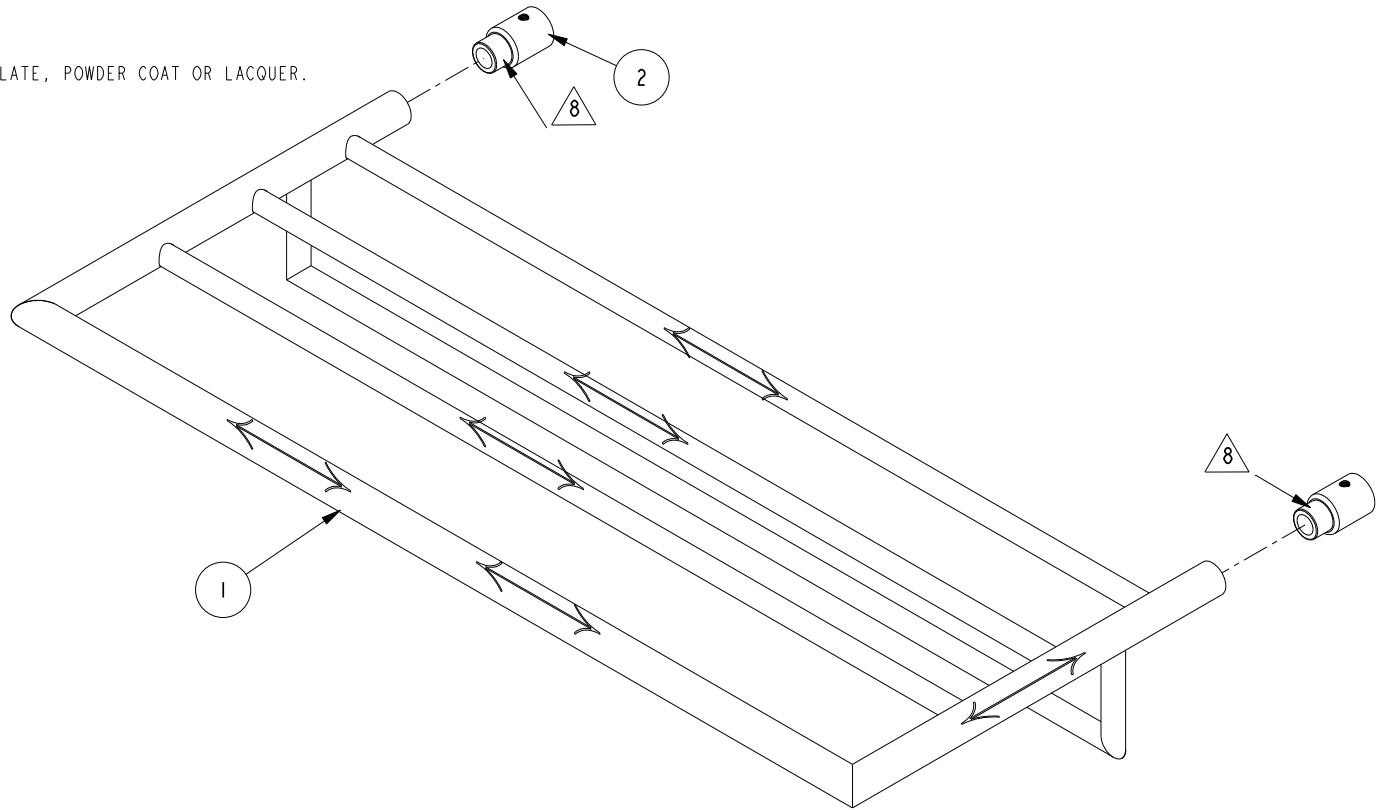


NOTES:

- (N1) 1. RAW METAL PARTS SHALL BE PURCHASED EXTERIOR POLISHED AND BUFFED.  
FOR MATERIAL SPECIFICATIONS SEE PS-E.001.  
FOR FINISH SPECIFICATIONS SEE SOP-Q.001 AND PS-Q.007
- (N2) 2. UNDIMENSIONED PART FEATURES SHALL COMPLY WITH 3D CAD DATA TO MAINTAIN DESIGN INTENT.
- 3. AESTHETIC DIMENSION SHALL COMPLY WITH PS-E.002 TO MAINTAIN DESIGN INTENT.
- (N4) 4. THREAD MASKING SHALL COMPLY WITH SOP-F.002.
- (N5) 5.  $\longleftrightarrow$  INDICATES STROKE DIRECTION FOR SATIN FINISHES ONLY.
- 6. DO NOT POLISH THIS SURFACE.
- 7. MASK THIS SURFACE PRIOR TO COPPERPLATE, POWDER COAT OR LACQUER.
- (N8) 8. BRAZING SHALL FOLLOW PS-E.001.

**BILL OF MATERIAL (CURRENT LEVEL)**

| ITEM | PT/ASSY | DESCRIPTION           | TYPE     | QTY. |
|------|---------|-----------------------|----------|------|
| 1    | 8-226   | 24" TOWEL SHELF FRAME | ASSEMBLY | 1    |
| 2    | 40629   | TOWEL SHELF SLEEVE    | PART     | 2    |



|                   |   |                                  |         |   |
|-------------------|---|----------------------------------|---------|---|
| TESTING           | - | -                                | -       | UNITS ARE: INCHES [MM]<br>TOLERANCES ARE:<br>FRACTIONS DECIMALS ANGLES<br>$\pm 1/16"$ $.X \pm .1$ [2.5] $\pm 1"$<br>$.XX \pm .06$ [1.5] |
| ASSEMBLY          | - | NEXT ASSY                        | USED ON | (X.XXX) DENOTES CRITICAL DIMS.<br>ALL THREADS ARE CRITICAL  |
| PLATING           | - | APPLICATION                      |         | DRAWN   |
| POLISHING         | - | REMOVE ALL BURRS AND SHARP EDGES |         | CHECKED   |
| MACHINING         | - | MATERIAL                         |         | APPROVED  |
| TOOLING FIXTURE # | - | FINISH                           |         | SCALE .250  |

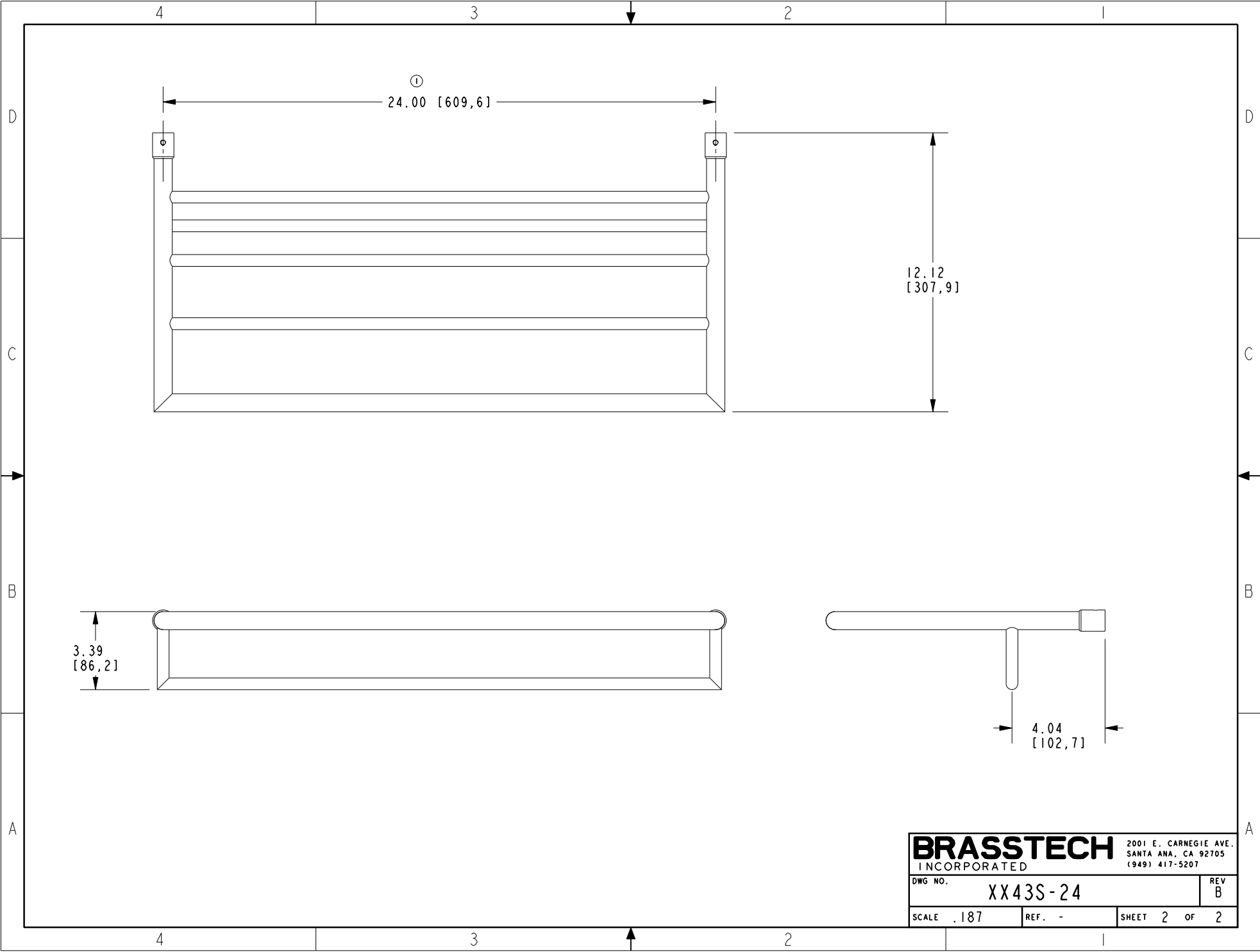
**BRASSTECH** 2001 CARNEGIE AVE.  
INCORPORATED SANTA ANA, CA 92705  
(949) 417-5207

**HOTEL SHELF FRAME**

|         |          |      |   |
|---------|----------|------|---|
| DWG NO. | XX43S-24 | REV  | B |
| SCALE   | .250     | REF. | - |
| SHEET   | 1        | OF   | 2 |

COPYRIGHT 2005 BRASSTECH, INC.  
THESE DRAWINGS AND THE DESIGNS  
DEPICTED HEREIN ARE THE PROPRIETARY  
PROPERTY OF BRASSTECH. ANY USE  
OR REPRODUCTION IS SUBJECT TO  
THE EXPRESS APPROVAL OF BRASSTECH.  
UNAUTHORIZED USE IS STRICTLY  
PROHIBITED. ALL RIGHTS RESERVED.

| -    | B   | EN-2949     | 01/13/16 | J.M.     |
|------|-----|-------------|----------|----------|
| -    | A   | EN-2379     | 12/07/12 | -        |
| -    | -   | EN-1706     | 03/07/11 | -        |
| ZONE | REV | DESCRIPTION | DATE     | APPROVED |



①  
24.00 [609,6]

12.12  
[307,9]

3.39  
[86,2]

4.04  
[102,7]

|                  |          |                       |        |
|------------------|----------|-----------------------|--------|
| <b>BRASSTECH</b> |          | 2001 E. CARNEGIE AVE. |        |
| INCORPORATED     |          | SANTA ANA, CA 92705   |        |
|                  |          | (949) 417-5207        |        |
| DWG NO.          | XX43S-24 | REV                   | B      |
| SCALE            | .187     | REF.                  | -      |
|                  |          | SHEET                 | 2 OF 2 |