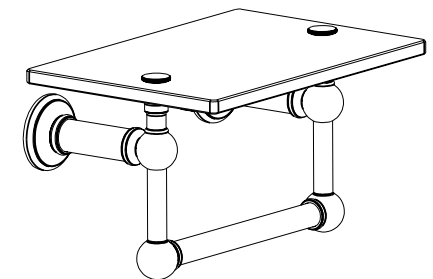


BILL OF MATERIAL

ITEM	PT/ASSY	DESCRIPTION	TYPE	QTY.	DWG.NO.
1	45XX	MOUNTING FLANGE	PART	2	45A-002
2	4500	ROSETTE	PART	2	45A-003
3	SM5-5S	M5 x5 STAINLESS STEEL SET SCREW	PART	2	-
4	8_1_5PFZ	NO.8 x 1-1/2" PHILLIPS FLAT HEAD	PART	4	-
5	GCA	NO. 8 -10 WALL ANCHOR PLASTIC	PART	4	-
6	SSPM	DRYWALL ANCHOR	PART	4	-
7	M2_5HK	2.5MM ALLOY STEEL HEX KEY	PART	1	-
8	4519P	GLASS SHELF POST	PART	2	45A-017
9	4519F	GLASS SHELF FINIAL	PART	2	45A-010
10	4519R	GLASS SHELF RISER	PART	2	45A-016
11	0234W	SHELF WASHER	PART	4	SIN-011
12	4534T_9TSCL	SHELF GLASS	PART	1	45A-015
13	0234S	TOP SCREW	PART	2	SIN-011
14	4519TR	SHELF TOWEL BAR RISER	PART	2	45A-016
15	4550F	POST FLANGE	PART	2	45A-005
16	RM16-1	16mm x 1mm BUNA-N- O-RING	PART	2	-
17	4550	TOWEL BAR TUBE	PART	1	4550



ASSEMBLY NOTES:

1. APPLY PERMANENT THREAD LOCKER (LOCTITE 262).
2. DURING FINAL ASSEMBLY: APPLY THIN LAYER OF (LOCTITE 404) AFTER O-RINGS ARE INSTALLED AND JUST BEFORE THE TOWEL BAR.

FINISHES:AGD- ANTIQUE GOLD, A8- ANTIQUE SILVER 3- POLISHED BRASS, 10B- OIL RUBBED BRONZE,14- POLISHED NICKEL, 15- SATIN NICKEL, 15A- ANTIQUE NICKEL, 28 POLISHED CHROME

MATERIAL: STAINLESS MOUNTING HARDWARE, VARIOUS BRASSES

PART NO. 4519T-9

9" SHELF W/ TOWEL BAR

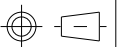
DATE:7.16.07

REV.DATE

REV.A

SCALE 1:4

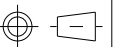
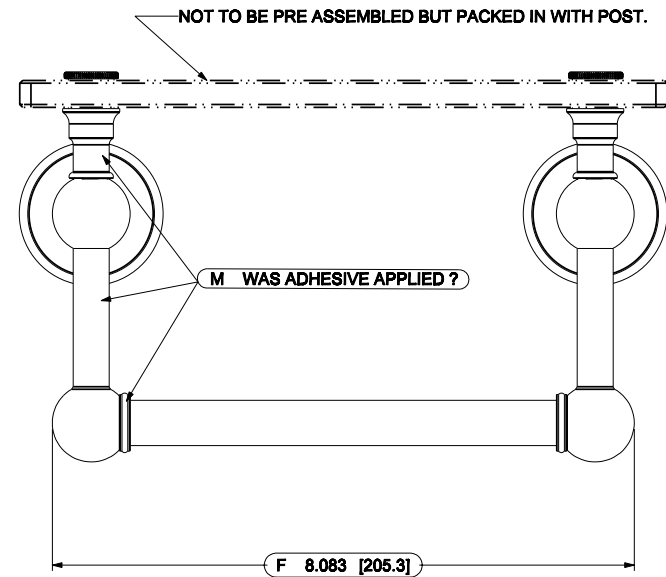
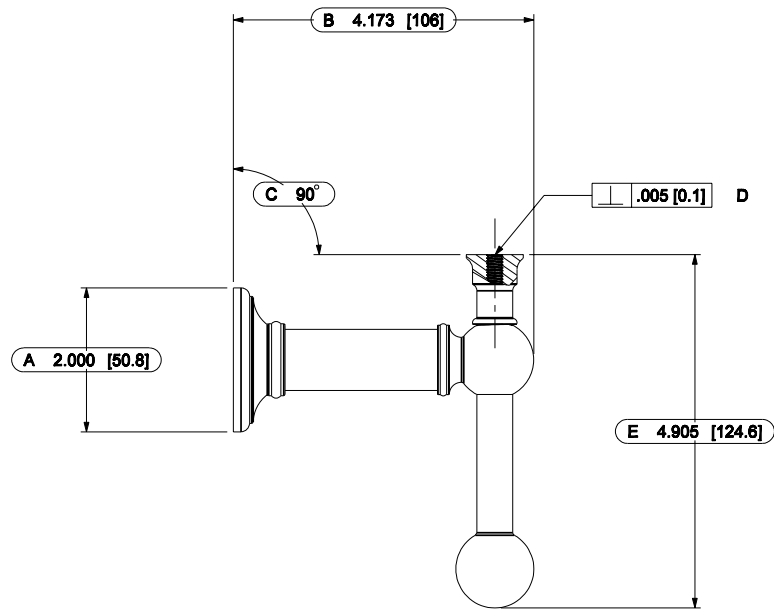
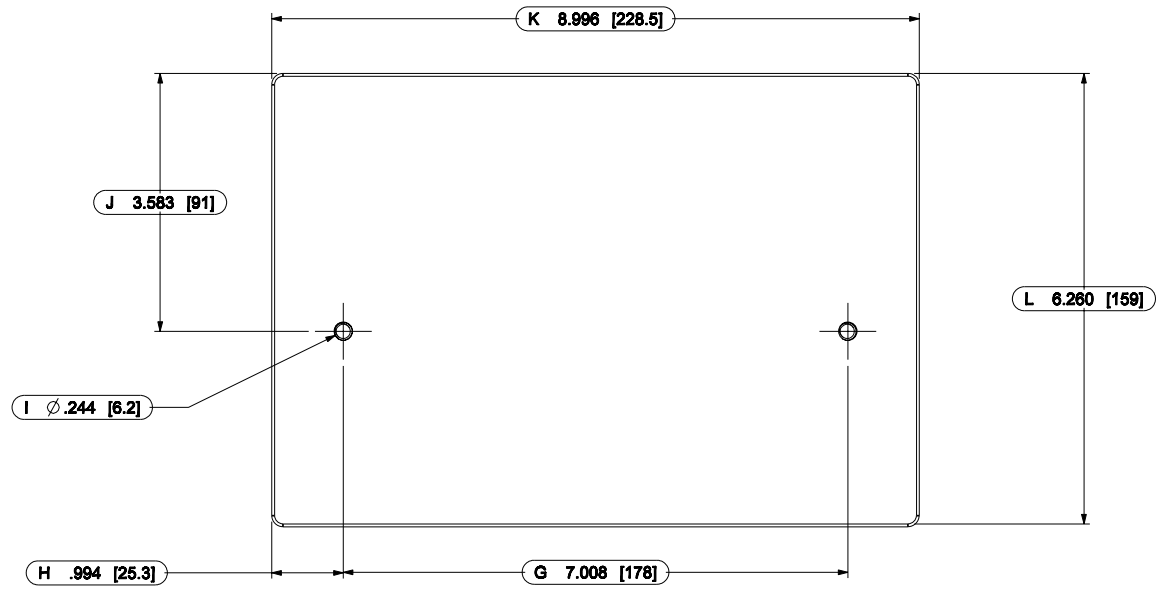
COLUMNAR



GINGER

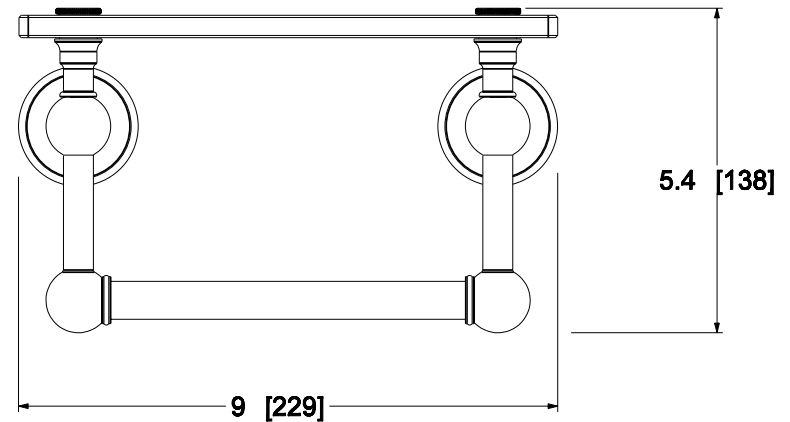
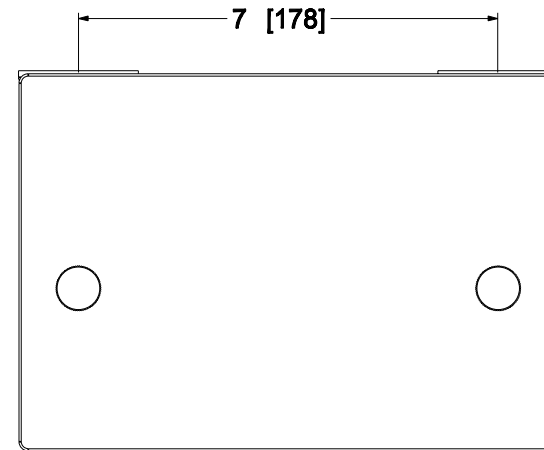
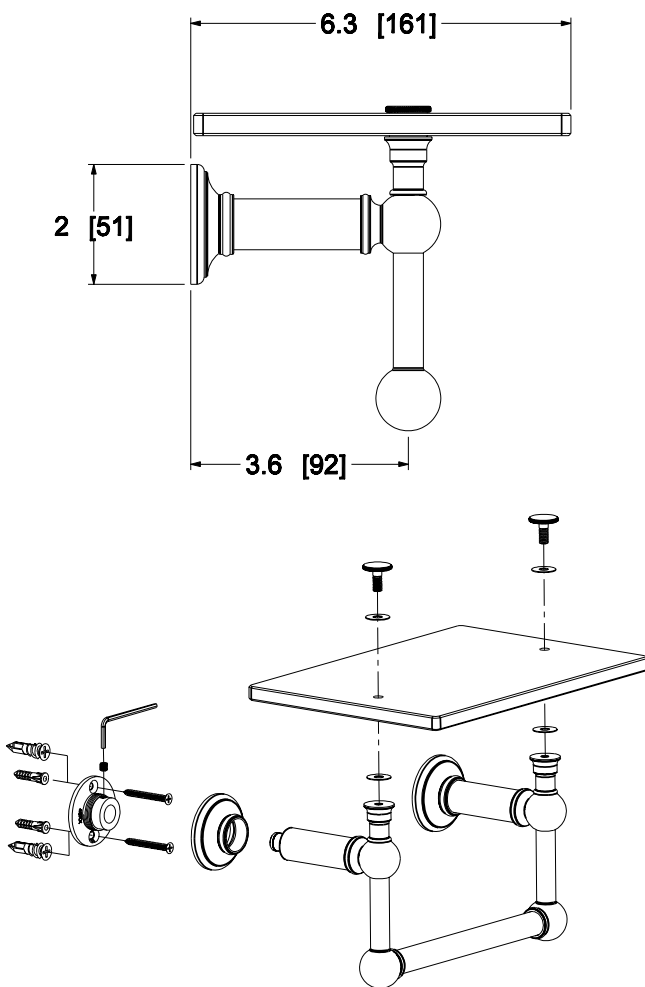
DWG.NO.

4519T-9



FINISHES: AGD- ANTIQUE GOLD, AS- ANTIQUE SILVER, 10B- OIL RUBBED BRONZE, 14- POLISHED NICKEL, 15- SATIN NICKEL, 26 POLISHED CHROME				
MATERIAL: STAINLESS MOUNTING HARDWARE, VARIOUS BRASSES				
PART NO.	4519T-9	9" SHELF W/ TOWEL BAR		
DATE: 7.16.07	REV. DATE	REV. A	SCALE 3:8	COLUMNAR

GINGER
DWG. NO.
4519T-9



FINISHES: 00- ANTIQUE GOLD, 01- ANTIQUE SILVER 5- POLISHED BRASS, 10- OIL RUBBED BRONZE, 14- POLISHED NICKEL, 15- SATIN NICKEL, 16- ANTIQUE NICKEL, 20- POLISHED CHROME		UNIT: INCH [MM]	GINGER DWG. NO. PD-4519T/9
MATERIAL: STAINLESS MOUNTING HARDWARE, VARIOUS BRASSES		WEIGHT: 3 LBS. 12OZ. [1.7KG]	
PART NO.	4519T/9	9" SHELF W / TOWEL BAR	
DATE: 4.16.07	REV. DATE:	SCALE 5:16	
		COLUMNAR	

