



LUNA WIDESPREAD FAUCET INSTALLATION

BEFORE YOU BEGIN

We recommend consulting a professional if you are unfamiliar with installing plumbing fixtures. Signature Hardware accepts no liability for any damage to the faucet, plumbing, sink, counter top, floor, or for personal injury during installation.

Observe all local plumbing and building codes.

Unpack and inspect the items for shipping damage. If any damage is found, contact our Customer Relations team at 1-866-855-2284.

GETTING STARTED

- Ensure that you have gathered all the required materials that are needed for the installation.
- For these instructions, it is assumed that the old faucet has been completely removed and any necessary repairs or modifications to the water supply have been completed.

TOOLS AND MATERIALS:



Plumbers
Tape



Thread
Sealant



Phillips
Screwdriver

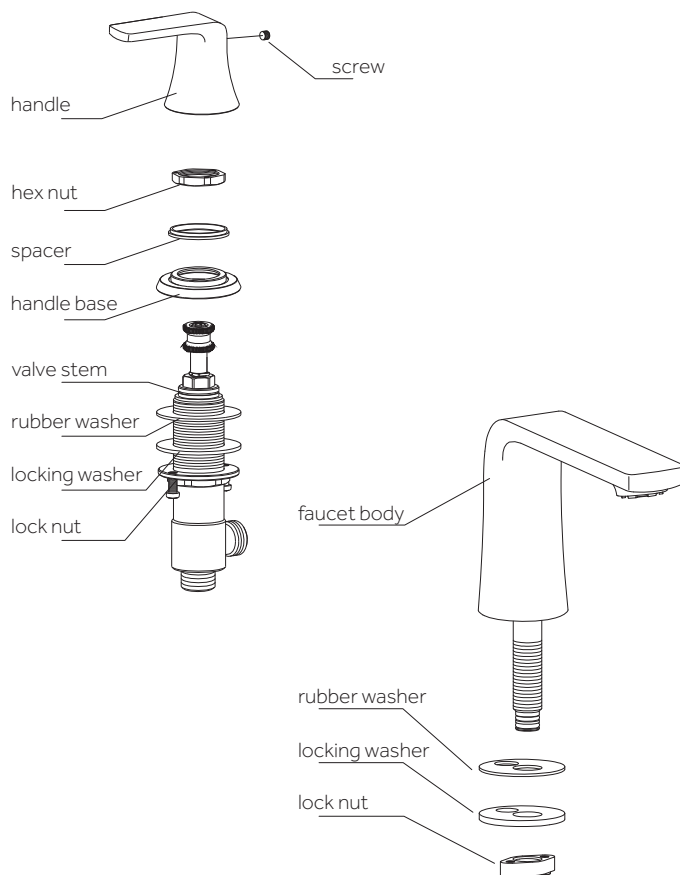


Adjustable
Wrench



Basin
Wrench

PART IDENTIFICATION

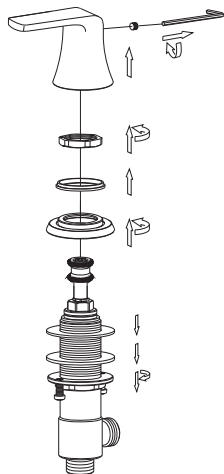




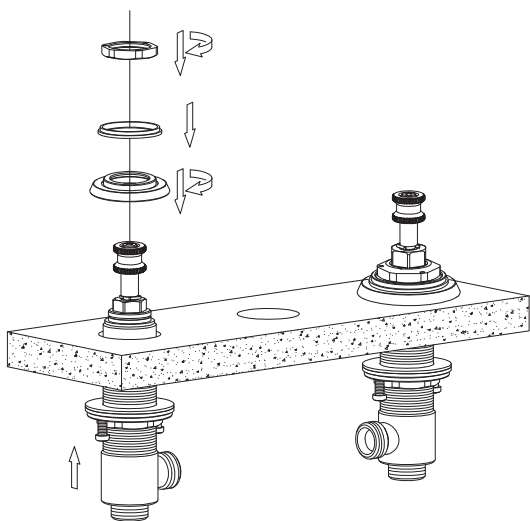
LUNA WIDESPREAD FAUCET INSTALLATION

INSTALLATION

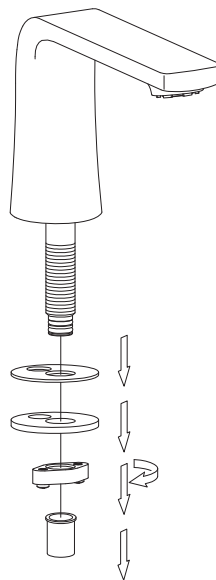
1. Remove the screw cover from the handle, then loosen the screw to remove the handle. Remove the hex nut, spacer, and handle base from the valve stem. Move the lock nut, locking washer, and rubber washer to the base of the valve stem.



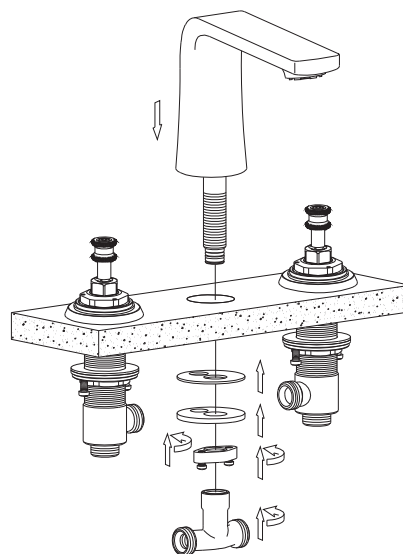
2. From below, insert each of the valve stems into their prepared mounting holes, as shown. Ensure that the hot valve is on the left, and the cold valve is on the right. From above, reassemble the valve stem in the reverse order from which parts were removed in step 1.



3. Remove the protective cap, lock nut, locking washer, and rubber washer from the faucet body, as shown.



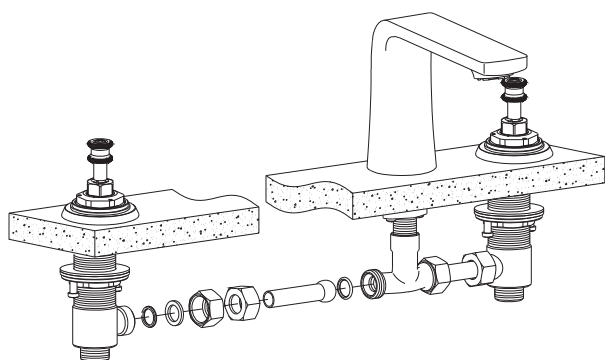
4. Insert the faucet body into the prepared mounting hole. From below, secure the faucet by reattaching the parts that were removed in step three. Tighten the lock nut firmly. Then, attach the T-connector to the end of the threaded shank, as shown..



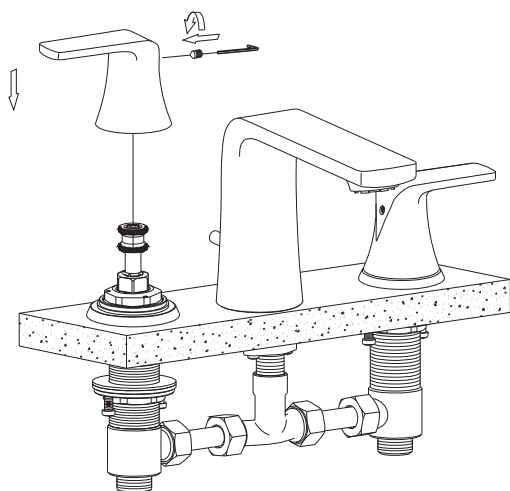


LUNA WIDESPREAD FAUCET INSTALLATION

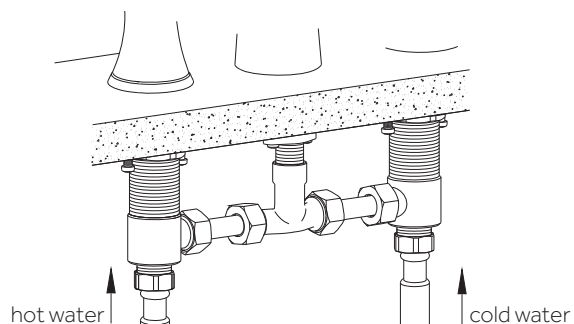
5. Connect each of the valve stems to the faucet body, as shown below using the provided supply tubes. Apply plumber's tape or thread sealant to all threads before connecting. Tighten each nut firmly, but be careful not to overtighten.



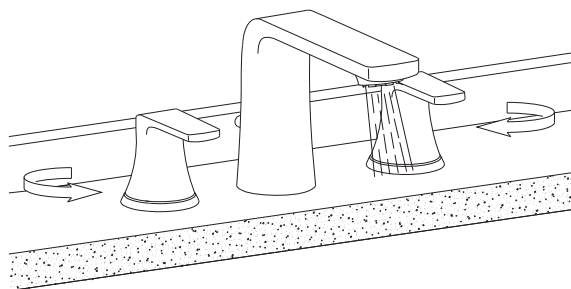
6. Attach the handles to the installed valve stems, as shown. Tighten each set screw to secure.



7. Attach the valve stems to the main water supply.



8. Proceed to sink drain installation. Once complete, turn the faucet on and allow water to flow for approximately 60 seconds to test functionality and check for leaks.



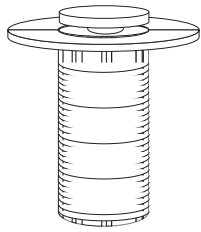


LUNA WIDESPREAD FAUCET INSTALLATION

DRAIN INSTALLATION

1. Dissassemble the drain assembly and lay the parts aside, in the same order they were removed. See the illustration below as a reference if needed.

Pop-Up Drain Flange



Flat Rubber Gasket



Tapered Rubber Gasket



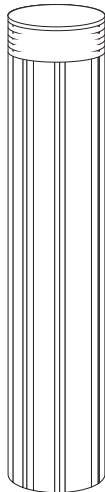
Plastic Friction Washer



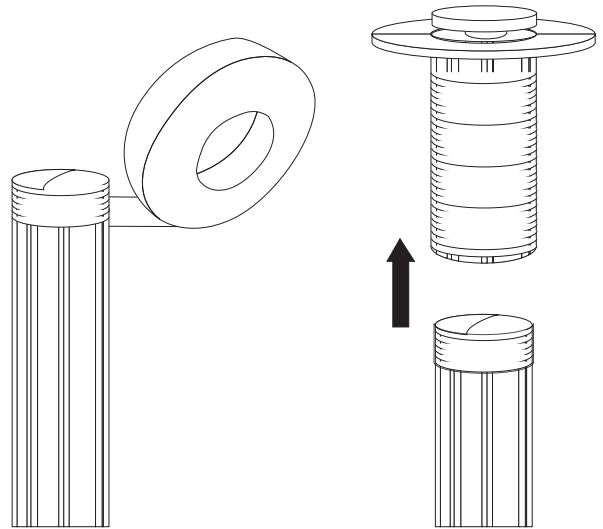
Lock Nut



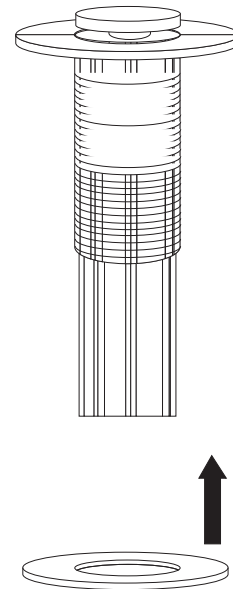
Tailpiece

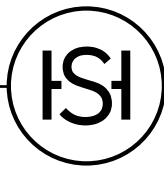


2. Apply plumber's tape to the threading on the tailpiece, then reattach the tail piece to the pop-up drain flange.



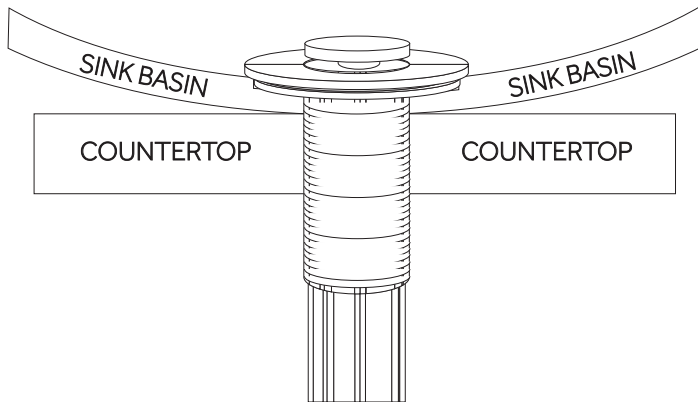
3. Slide the flat rubber gasket up the tailpiece until it meets the lip of the pop-up drain flange.



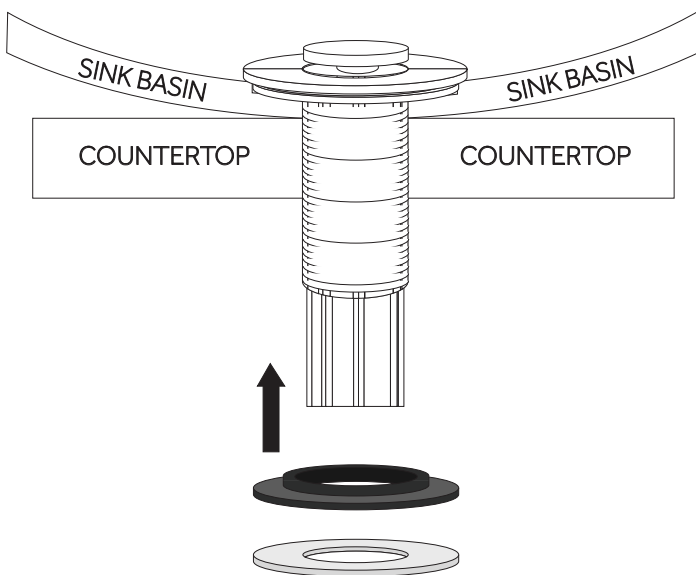


LUNA WIDESPREAD FAUCET INSTALLATION

4. Insert the drain flange and tailpiece through the top of your sink's drain hole.



5. From under your counter, slide the tapered rubber gasket followed by the plastic friction washer onto the tailpiece until they meet your sink or countertop. Be sure that the tapered side of the rubber washer is facing up.



6. Thread the lock nut onto the drain flange. Hand tighten until secure, then finish tightening with a basin wrench once the drain is properly aligned.

Important: Be careful not to overtighten, which could crack a porcelain sink or stone countertop.

