



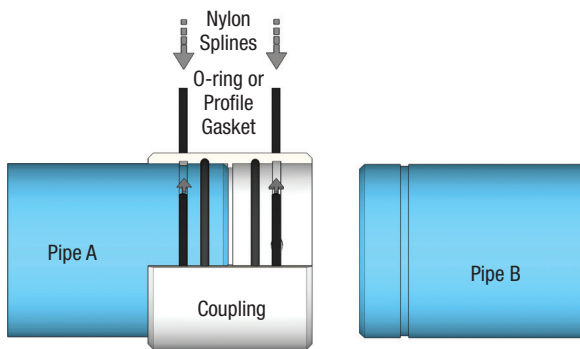
C900/RJ Certa-Lok® PVC Pressure Pipe | Restrained Joint

NAPCO's C900/RJ Certa-Lok PVC Pressure Pipe is manufactured to meet the standards of today's municipal needs for water and wastewater pressure applications. This unique coupled, restrained-joint system is jobsite proven for decades and designed for trenchless applications with robust tensile strength for pulling multiple segments underground. The low profile coupling allows for quick and easy assembly without interrupting the pulling process and provides greater deflection at the joint for leak-free results. The system assembles in minutes and eliminates costly time consuming fusion.

A segmented PVC pipe solution, this product reduces the jobsite footprint and minimizes community disruption with reduced need for jobsite staging area and traffic control. This coupled pipe system is offered in sizes 4" through 24" with two gaskets per coupling for a leak-free joint and greater deflection capability. Gaskets are available in styrene-butadiene rubber (SBR) as a standard as well as acrylonitrile butadiene rubber (NBR) depending on your soil and site conditions.

INSTALLATION METHODS

- Horizontal directional drilling (HDD)
- Static pipe-bursting
- Open-cut
- Carrier pipe through casings



| Applications | Potable Water | Wastewater | Reclaimed Water |
|---|-----------------------------|--------------|-----------------|
| Pipe Color: | Blue | Green | Purple |
| Coupling Color 4" – 12": 4" – 24": | White Tan | White Tan | White Tan |
| Certifications:* | NSF 61 NSF 14 UL 1285 | None | None |

*See Certification Letter for full explanation and list of exceptions.

| Short Form Specification | |
|---|--|
| Pipe Standard: | C900 |
| Diameter Std.: | Cast Iron Outside Diameter (CIOD) |
| Nominal Sizes: | 4", 6", 8", 10", 12", 14", 16", 18", 20", 24" |
| Dimension Ratios & Pressure Ratings: | DR 25 – 165 psi DR 21 – 200 psi DR 18 – 235 psi DR 14 – 305 psi |
| Standard Lay Length:** | 20', 40' |
| Pipe Compound: | ASTM D1784 Cell Class 12454 |
| Coupling Material: | 4"–12": ASTM D1784 Cell Class 12454 14"–24": Fiberglass Composite |
| Pipe Joint Std.: | ASTM D3139 |
| Max. Angular Joint Deflection:‡ | 0.5° per side of coupling 1° total per joint |
| Gasket Standard: | ASTM F477, UL 157 |
| Gasket Material Offering: | Standard – IR/SBR Optional – NBR |
| Installation Std.: | AWWA C605 |

**Only 20' lengths are hydrotested.

‡See Installation Guide for more information.



Only products bearing the NSF Mark are Certified





C900/RJ Certa-Lok PVC Pressure Pipe | Restrained Joint

| C900/RJ CERTA-LOK PIPE & COUPLING DIMENSIONS | | | | | | | | | | | | |
|--|-----------------------|----|-------------------------|------------------------|-------|-------|-------|-------|----------------|----------|--------|----------------|
| Nom. Size | Outside Diameter (OD) | DR | Pipe | | | | | | | Coupling | | |
| | | | Min. Wall Thickness (T) | Internal Diameter (ID) | X | W | D | P | Weight (lb/ft) | BOD | L | Weight (lb/ft) |
| 4" | 4.800 | 18 | 0.267 | 4.266 | 3.000 | 0.375 | 0.135 | 0.302 | 2.5 | 5.964 | 8.250 | 4.0 |
| | | 14 | 0.343 | 4.114 | | | | | 3.1 | | | |
| 6" | 6.900 | 18 | 0.383 | 6.134 | 3.000 | 0.500 | 0.135 | 0.302 | 5.1 | 8.366 | 8.250 | 7.1 |
| | | 14 | 0.493 | 5.914 | | | | | 6.4 | | | |
| 8" | 9.050 | 18 | 0.503 | 8.044 | 3.163 | 0.500 | 0.145 | 0.634 | 8.7 | 10.947 | 10.500 | 15.5 |
| | | 14 | 0.646 | 7.758 | | | | | 11.0 | | | |
| 10" | 11.100 | 18 | 0.617 | 9.866 | 3.625 | 0.750 | 0.215 | 0.634 | 13.2 | 13.361 | 11.125 | 23.9 |
| | | 14 | 0.793 | 9.514 | | | | | 16.6 | | | |
| 12" | 13.200 | 18 | 0.733 | 11.734 | 3.625 | 0.750 | 0.215 | 0.634 | 18.6 | 15.836 | 12.000 | 36.1 |
| | | 14 | 0.943 | 11.314 | | | | | 23.5 | | | |
| 14" | 15.300 | 25 | 0.612 | 14.076 | 3.610 | 0.750 | 0.215 | 0.634 | 18.3 | 16.400 | 12.000 | 26.9 |
| | | 21 | 0.729 | 13.842 | | | | | 21.7 | | | |
| | | 18 | 0.850 | 13.600 | | | | | 25.0 | | | |
| 16" | 17.400 | 25 | 0.696 | 16.008 | 3.610 | 0.750 | 0.215 | 0.634 | 23.7 | 18.875 | 12.000 | 39.8 |
| | | 21 | 0.829 | 15.742 | | | | | 28.0 | | | |
| | | 18 | 0.967 | 15.466 | | | | | 32.4 | | | |
| | | 14 | 1.243 | 14.914 | | | | | 40.9 | | | |
| 18" | 19.500 | 25 | 0.780 | 17.940 | 4.035 | 1.100 | 0.300 | 0.750 | 29.8 | 20.870 | 15.000 | 47.0 |
| | | 21 | 0.929 | 17.642 | | | | | 35.1 | | | |
| | | 18 | 1.083 | 17.334 | | | | | 40.6 | | | |
| 20" | 21.600 | 25 | 0.864 | 19.872 | 4.035 | 1.100 | 0.300 | 0.750 | 36.5 | 23.120 | 15.000 | 55.7 |
| | | 21 | 1.029 | 19.542 | | | | | 43.1 | | | |
| | | 18 | 1.200 | 19.200 | | | | | 49.8 | | | |
| 24" | 25.800 | 25 | 1.032 | 23.736 | 4.035 | 1.100 | 0.300 | 0.750 | 52.1 | 27.620 | 15.000 | 81.3 |
| | | 21 | 1.224 | 23.342 | | | | | 61.5 | | | |
| | | 18 | 1.433 | 22.934 | | | | | 71.1 | | | |

Notes:

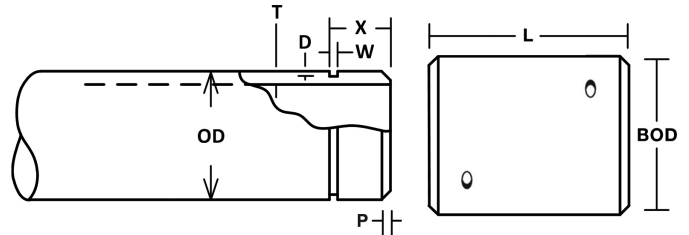
1. These dimensions are for estimating purposes only. All dimensions are in inches unless otherwise specified.
2. DR = Dimension Ratio
3. AWWA Pressure Class @ 73°F and includes 2:1 safety factor.
4. Maximum Pull Force based on actual testing and includes 2:1 safety factor.
5. Internal diameter calculated using nominal outside diameter and minimum wall thickness.



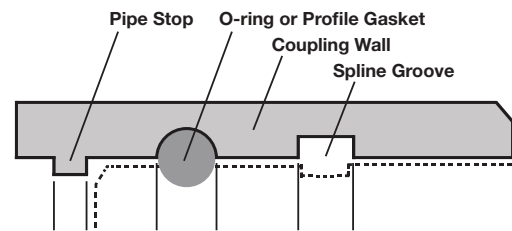


C900/RJ Certa-Lok PVC Pressure Pipe | Restrained Joint

| JOINT PERFORMANCE DATA | | | | |
|------------------------|----|----------------------|-----------------------|-----------------------|
| Nom. Size | DR | Pressure Class (psi) | Min. Bend Radius (ft) | Max. Pull Force (lbf) |
| 4" | 18 | 235 | 100 | 7,800 |
| | 14 | 305 | | 9,800 |
| 6" | 18 | 235 | 144 | 16,000 |
| | 14 | 305 | | 18,900 |
| 8" | 18 | 235 | 188 | 23,100 |
| | 14 | 305 | | 24,300 |
| 10" | 18 | 235 | 232 | 40,500 |
| | 14 | 305 | | 48,700 |
| 12" | 18 | 235 | 275 | 50,500 |
| | 14 | 305 | | 53,800 |
| 14" | 25 | 165 | 319 | 52,500 |
| | 21 | 200 | | 57,000 |
| | 18 | 235 | | 61,500 |
| 16" | 25 | 165 | 363 | 68,500 |
| | 21 | 200 | | 68,500 |
| | 18 | 235 | | 68,500 |
| | 14 | 305 | | 68,500 |
| 18" | 25 | 165 | 406 | 97,000 |
| | 21 | 200 | | 105,000 |
| | 18 | 235 | | 113,000 |
| 20" | 25 | 165 | 450 | 107,500 |
| | 21 | 200 | | 112,500 |
| | 18 | 235 | | 117,500 |
| 24" | 25 | 165 | 538 | 120,000 |
| | 21 | 200 | | 132,500 |
| | 18 | 235 | | 145,000 |



C900/RJ COUPLING DETAIL:





MUNICIPAL PRODUCT SPECIFICATION

C900/RJ Certa-Lok PVC Pressure Pipe | Restrained Joint

| C900/RJ CERTA-LOK ACCESSORIES | | | | | | | | | | | | |
|-------------------------------|----------------------|----------------------|---------------------|--------------|-------------|-------------|----------|-------------|----------|---------------|---------------|-------------|
| Application | Nom. Size | Couplings | | | Splines | | | | Gaskets | | | |
| | | Material | Max. Pressure (psi) | Part Number* | Material | Size | Length | Part Number | Material | Shape | Size | Part Number |
| Standard | 4" | PVC | 305 | 82157292743 | Nylon | 0.250x0.250 | 18 | S0418SN0 | IR/SBR | Round | 0.313 | OR040RJ0I |
| | 6" | PVC | 305 | 82157292309 | Nylon | 0.250x0.375 | 24 | S0624TN0 | IR/SBR | Round | 0.313 | OR060RJ0I |
| | 8" | PVC | 305 | 82157292330 | Nylon | 0.250x0.375 | 32 | S0832TN0 | IR/SBR | Round | 0.400 | OR080RJ0I |
| | 10" | PVC | 305 | 82157292316 | Nylon | 0.375x0.625 | 39 | S1039TN0 | IR/SBR | Round | 0.438 | OR100RJ0I |
| | 12" | PVC | 305 | 82157292323 | Nylon | 0.375x0.625 | 46 | S1246TN0 | IR/SBR | Round | 0.438 | OR120RJ0I |
| | 14" | Fiberglass Composite | 235 | 82157741296 | Nylon | 0.375x0.625 | 51 | S1451TN0 | IR/SBR | Round | 0.438 | OR140RJ0I |
| | 16" | Fiberglass Composite | 235 | 82157741272 | Nylon | 0.375x0.625 | 56 | S1656TN0 | IR/SBR | Round | 0.407 | OR160RJ0I |
| | | | 305 | 82157716310 | Nylon | 0.500x0.750 | 60 | S1660TN0 | IR/SBR | Profile | 0.750 x 0.513 | GSPR001600 |
| | 18" | Fiberglass Composite | 235 | 82157741333 | Nylon | 0.563x0.975 | 68 | S1868TN0 | IR/SBR | Profile | 0.825 x 0.566 | GSPR001800 |
| | 20" | Fiberglass Composite | 235 | 82157716312 | Nylon | 0.563x0.975 | 75 | S2075TN0 | IR/SBR | Profile | 0.825 x 0.566 | GSPR002000 |
| 24" | Fiberglass Composite | 235 | 82157741340 | Nylon | 0.563x0.975 | 88 | S2488TN0 | IR/SBR | Profile | 0.825 x 0.566 | GSPR002400 | |
| Oil-Resistant | 4" | PVC | 305 | 82157292331 | Nylon | 0.250x0.250 | 18 | S0418SN0 | NBR | Round | 0.313 | OR040RION |
| | 6" | PVC | 305 | 82157292332 | Nylon | 0.250x0.375 | 24 | S0624TN0 | NBR | Round | 0.313 | OR060RION |
| | 8" | PVC | 305 | 82157292333 | Nylon | 0.250x0.375 | 32 | S0832TN0 | NBR | Round | 0.400 | OR080RION |
| | 10" | PVC | 305 | 82157292334 | Nylon | 0.375x0.625 | 39 | S1039TN0 | NBR | Round | 0.438 | OR100RION |
| | 12" | PVC | 305 | 82157292335 | Nylon | 0.375x0.625 | 46 | S1246TN0 | NBR | Round | 0.438 | OR120RION |

* = Includes coupling, 2 gaskets, and 2 splines

