

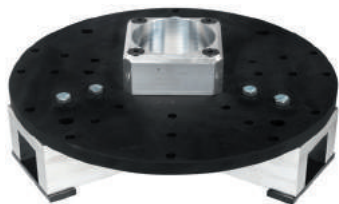


13968 RISING STEM TORQUE ADAPTER

Features:

- Clutch “slips” to keep operator and valve safe while exercising.
- Torque Specs: adjustable 0 – 200 ft.lbs.
- Unique clutch system allows you to set the torque accordingly, to exercise valves without exceeding their limit.
- Clutch can be easily adjusted with any 3/4" wrench. (Not included)
- Control Rods have graduations for approximate ft.lbs. of torque.
- To be used with the 13970 on rising stem valves.
- The 701061 counter assembly can be added to the 68115 and the 13970 for ease of valve revolution counting.
- Clutch is allowed to “slip” and keep correct count when using the 701061 counter assembly.

Weight10 lbs. (4.5kg)



13970 HAND WHEEL ADAPTER

Features:

- Adapts to valves with hand wheels with or without rising stems up to 3" in diameter.
- Series of bolt holes to adapt to many different spoke patterns and styles available.
- Allows you to exercise the valve with ease by using the 68115 with the addition of a 13968 Rising Stem Torque Adapter.
- The 701061 counter assembly can be added to the 68115 and the 13968 for ease of valve revolution counting.

Weight12 lbs. (5.45kg)



10700 HYDRANT NUT

A convenient 1" square drive adapter designed for most hydrants. Use it with a portable power drive or with a T-Handle Key. It reduces worker fatigue when used with the WHEELER-REX 68115 Power Drive. Can also use the WHEELER-REX 8806 or 8808 Telescoping Valve Keys.

Machined and fabricated steel construction, adjustable to a variety of pentagon nut up to a 1-3/4". A 3/4" jam bolt is included.

Weight6 lbs. (2.7kg)

VALVE KEYS

8806 6 FT. TELESCOPING VALVE KEY

Packed into a convenient 24" carrying case. Quick disconnect pull pins make adjustments fast and easy. Both a manual handle and a 1" square power adapter are included. 2" square female drive fits most standard valves. Telescopes to 6 ft.20 lbs. (9kg)

8808 8 FT. TELESCOPING VALVE KEY

Packed into a convenient 24" carrying case. Quick disconnect pull pins make adjustments fast and easy. Both a manual handle and a 1" square power adapter are included. 2" square female drive fits most standard valves. Telescopes to 8 ft.23 lbs. (10.5kg)

88024 2 FT. EXTENSION

To extend your 8806 6' key into an 8808 8' key5.5 lbs. (2.5kg)

