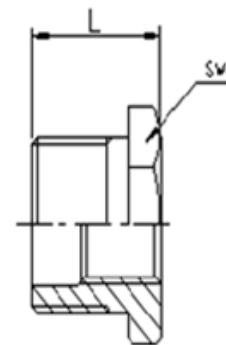
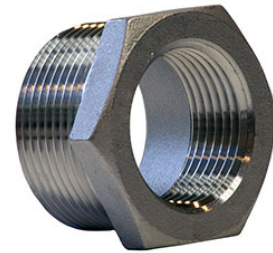


DIMENSIONAL SPECIFICATIONS

STAINLESS STEEL ISO PATTERN FITTINGS 150 LB.

HEX HEAD BUSHING CONTINUED (304)

Part #	Size (IN.)	Approx. Net WT. (LB.)	L	SW
K414-2420	1-1/2 X 1-1/4	0.45	1.22	2.05
K414-3204	2 X 1/4	0.99	1.38	2.48
K414-3206	2 X 3/8	0.95	1.38	2.48
K414-3208	2 X 1/2	0.90	1.38	2.48
K414-3212	2 X 3/4	0.82	1.38	2.48
K414-3216	2 X 1	0.77	1.38	2.48
K414-3220	2 X 1-1/4	0.79	1.38	2.48
K414-3224	2 X 1-1/2	0.66	1.38	2.48
K414-4008	2-1/2 X 1/2	1.73	1.57	3.19
K414-4012	2-1/2 X 3/4	1.66	1.57	3.19
K414-4016	2-1/2 X 1	1.66	1.57	3.19
K414-4020	2-1/2 X 1-1/4	1.51	1.57	3.19
K414-4024	2-1/2 X 1-1/2	1.43	1.57	3.19
K414-4032	2-1/2 X 2	1.20	1.57	3.19
K414-4816	3 X 1	2.76	1.73	3.72
K414-4820	3 X 1-1/4	2.52	1.73	3.72
K414-4824	3 X 1-1/2	2.47	1.73	3.74
K414-4832	3 X 2	2.26	1.73	3.74
K414-4840	3 X 2-1/2	1.85	1.73	3.74
K414-6416	4 X 1	4.25	2.01	4.72
K414-6420	4 X 1-1/4	4.38	2.01	4.72
K414-6424	4 X 1-1/2	4.08	2.01	4.72
K414-6432	4 X 2	4.34	2.01	4.72
K414-6440	4 X 2-1/2	3.59	2.01	4.72
K414-6448	4 X 3	3.29	2.01	4.72



**MERIT
BRASS**

DIRECTING THE FLOW OF *Quality*