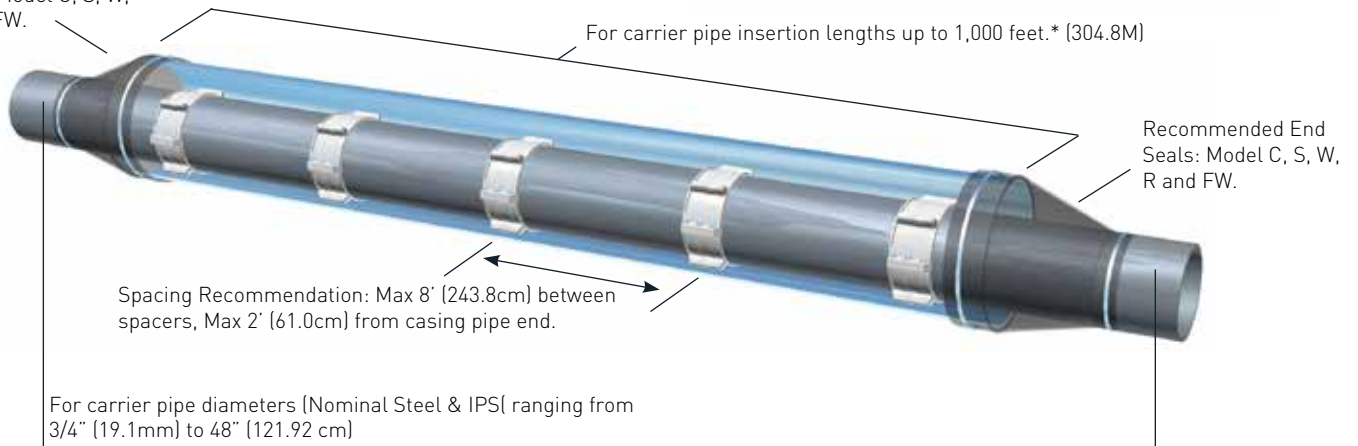


Contact GPT if longer insertions over 1000 ft.

Recommended End Seals: Model C, S, W, R and FW.



FEATURES/BENEFITS

- » Ribbed inner surface prevents slippage & guards against coating damage.
- » Molded from virgin polyethylene material.
- » Lightweight for ease of handling and installation.
- » Screwdriver is only tool needed for installation.
- » Eliminates the need for grout, blown sand or pea gravel.

TARGETED USE - ENERGY

Model PE Casing Spacers are designed for smaller diameter steel or polyethylene carrier pipes (ANSI O.D. pipe without a bell mechanical joint). We do not recommend that they be used on any carrier pipe over 24" (61.0cm) in diameter or for installations over 400 feet (121.9M) long without consulting with GPT. PE Isolators should not be used on concrete carrier pipe.

High density (linear), injection molded virgin Polyethylene casing isolators/spacers provide positive electrical isolation, high abrasion resistance and low coefficient of friction for a wide variety of double containment carrier/casing pipe applications. They are extremely light in weight and easy to handle during installation.

A ribbed inner surface prevents slippage and guards against carrier pipe coating damage while the outer surface may include any one of several molded runners to accommodate 2" (50.8mm) x 4" (101.6mm) or larger carrier/casing differentials. One piece solid molded segments provide for maximum load bearing. Hardware includes cadmium plated steel bolts and nuts. A screwdriver is the only tool needed for installation.

Casing Spacer Models - Non-Metallic, Model PE

MATERIAL SPECIFICATIONS

Specification	ASTM Test	Value
Band/Runner Segments		Injection Molded Virgin Polyethylene
Tensile Strength	D638, D651	3,100 - 5,500 psi [218 - 387 kg/cm ²]
Compressive Strength	D693	3,200 psi [225kg/cm ²]
Water Absorption	D570	0.1%
Temperature		180°F. Max. [82°C]
Impact Strength	D256	1.5-2.0 ft lb/in. [0.8-1.07 newton-meters/cm]
Dielectric Strength	D149	450 Volts/Mil.
Color		White
Liner - None		
Runners - Size and Configurations 3/4" [19mm] through 12" [305mm] = 2-piece with molded-in runners 14" [356mm] and larger = Multiple segments with molded-in runners.		
Hardware Metallic - Bolts and Square Nuts = Plated Steel		

BAND WIDTH AND RUNNER HEIGHT

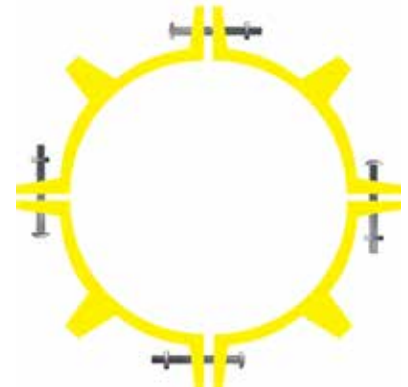
Model Size	Band Width	Runner Height
3/4 x 2	3.0" [76.19mm]	5/16" [7.94mm]
1 x 3	3.0" [76.19mm]	1/2" [12.7mm]
1-1/4 x 3	3.0" [76.19mm]	1/2" [12.7mm]
1-1/2 x 3	3.0" [76.19mm]	1/2" [12.7mm]
2 x 4	4.0" [101.6mm]	5/8" [15.88mm]
2-1/2 x 5	4.0" [101.6mm]	5/8" [15.88mm]
3 x 6	4.0" [101.6mm]	5/8" [15.88mm]
4 x 6	4.0" [101.6mm]	9/16" [14.29mm]
4 x 8	4.0" [101.6mm]	1" [25.4mm]
6 x 8	4.0" [101.6mm]	9/16" [14.29mm]
6 x 10	4.0" [101.6mm]	1" [25.4mm]
8 x 10	4.0" [101.6mm]	9/16" [14.29mm]
8 x 12	5.0" [127.0mm]	1" [25.4mm]
10 x 14	5.0" [127.0mm]	7/8" [22.23mm]
12 x 16	5.0" [127.0mm]	7/8" [22.23mm]
All multiple segments* [4" differential]	6.25" [158.75mm]	1" [25.4mm]
All multiple segments* [6" differential]	6.25" [158.75mm]	1-1/2" [38.1mm]

Note: Model PE sized for nominal steel and IPS pipe

* Download model size information from www.gptindustries.com

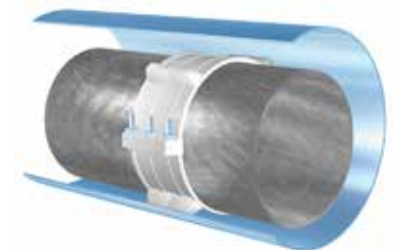


2-Piece
For 3/4" to 12" [1.9 to 30.48cm]



Multi-Segment
For 14" [35.56cm] and above

Position in Casing



Model PE Standard
S= Standard