

4

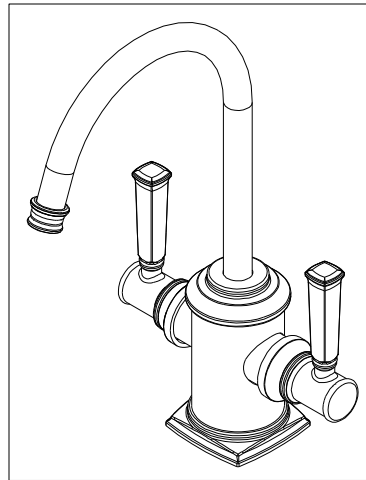
3

2

1

NOTES:

- (N1) 1. FIT / FORM / FUNCTION SHALL FOLLOW PS-E.008.
- 2 APPLY LOCTITE 680.
- 3 CUT AND SHORTEN O-RING BY .13" TO .20" IN LENGTH BEFORE INSTALLING.
- 4 SLIT O-RING BEFORE INSTALLING.
- 5 APPLY LOCTITE 242.
- (N6) 6 CONNECT WHITE AND RED TUBINGS TOGETHER AND WATER TEST WHOLE UNIT.
- 7 BAG 5-035 IN A SEPARATE BAG.
- (N8) 8 REWORK CARTRIDGE ASSY IF THE HANDLE DOES NOT RETURN TO THE 'OFF' POSITION AUTOMATICALLY AFTER WATER TESTING.
- 9 INSTALLATION TORQUE: 8-14 LB-FT.
- 10 INSTALLATION TORQUE: 30 LB-FT.
- 11 LUBRICATE SPRING WITH DOW CORNING III SILICONE COMPOUND.
- 12 PRE-CRIMPED THESE PARTS TOGETHER. SEE INSTALLATION INSTRUCTION.
- 13 APPLY LIGHT FILM OF DOW CORNING III SILICONE COMPOUND.



BILL OF MATERIAL (CURRENT LEVEL)

ITEM	PT/ASSY	DESCRIPTION	TYPE	QTY.
1	1-134	CARTR 3/8 HOT 1/4 TR	PART	1
2	1-393	1-1/8 18 UNEF MOUNTING KIT	ASSEMBLY	1
3	5-035	COUPLING & INSERT ASM	ASSEMBLY	1
4	5-061	ADAPTER/CARTRIDGE ASSY	ASSEMBLY	1
5	20-291	HANDLE HUB ASM	ASSEMBLY	2
6	20-293	ESCUTCHEON ASM	ASSEMBLY	1
7	11733	SHELL, SPOUT, WATER DISP	PART	1
8	12512	BONNET	PART	2
9	12708	BODY CAP	PART	1
10	12750	ADAPTER	PART	1
11	12949	1-1/8-18 UNEF MOUNTING NIPPLE	PART	1
12	50066	COMPRESSION RING, 1/2	PART	3
13	50068	INSERT, HOSE	PART	3
14	50713	SPOUT, WATER DISP. (TRAD.)	PART	1
15	50714	WATER DISP. CAR.T HOLDER	PART	2
16	50717	WATER DISP SPOUT RETAINER	PART	1
17	50745	WATER DISP. BODY H/C (CONT)	PART	1
18	50768	RETAINER PLATE	PART	1
19	91017	O-RING, #2- 012, EPDM, 65-75 DURO, NSF 61	PART	2
20	91023	O-RING, #2- 019, EPDM, 65-75 DURO, NSF 61	PART	1
21	91100	O-RING, #2-006, EPDM, 65-75 DURO	PART	3
22	91376	TUBE, RED, .250 OD X 4 FT	PART	1
23	91377	TUBE, BLUE, .250 OD X 4 FT	PART	1
24	91378	TUBE, HIGH TEMP, .250 OD X 4 FT	PART	1
25	91382	O-RING, #2- 012, TEFLON,	PART	1
26	91383	O-RING, #2- 014, TEFLON, NSF 61	PART	1
27	92016	SCRW, 10-24 X 3/4 SKT HD FLT PT SS	PART	2
28	92862	SCRW, M4 X 18 SKT FLT HD SS	PART	1
29	98043	TAG LABEL, HOT WATER WARNING	PART	1

A

ZONE	REV	DESCRIPTION	DATE	APPROVED
-	B	EN-3558a	01/02/19	V.V.
-	A	EN-3693	08/29/18	J.M
-	-	EN-3229	08/21/17	J.M

COPYRIGHT 2005 BRASSTECH, INC.
THESE DRAWINGS AND THE DESIGNS
DEPICTED HEREIN ARE THE PROPRIETARY
PROPERTY OF BRASSTECH. ANY USE
OR REPRODUCTION IS SUBJECT TO
THE EXPRESS APPROVAL OF BRASSTECH.
UNAUTHORIZED USE IS STRICTLY
PROHIBITED. ALL RIGHTS RESERVED.

TESTING	ASSEMBLY	PLATING	POLISHING	MACHINING	TOOLING FIXTURE #	APPLICATION
-	-	-	-	-		REMOVE ALL BURRS AND SHARP EDGES

UNITS ARE: INCHES [MM]
TOLERANCES ARE:

FRACTIONS DECIMALS ANGLES
±1/16" .X ±.1 [2.5] ±1°
.XX ±.06 [1.5]

(X.XXX) DENOTES CRITICAL DIMS.
ALL THREADS ARE CRITICAL

DRAWN MANJUNATH 01/02/19
CHECKED JINSON 01/02/19
APPROVED V.V. 01/02/19

BRASSTECH
INCORPORATED

2001 CARNEGIE AVE.
SANTA ANA, CA 92705
(949) 417-5207

WATER DISPENSER - HOT &
COLD

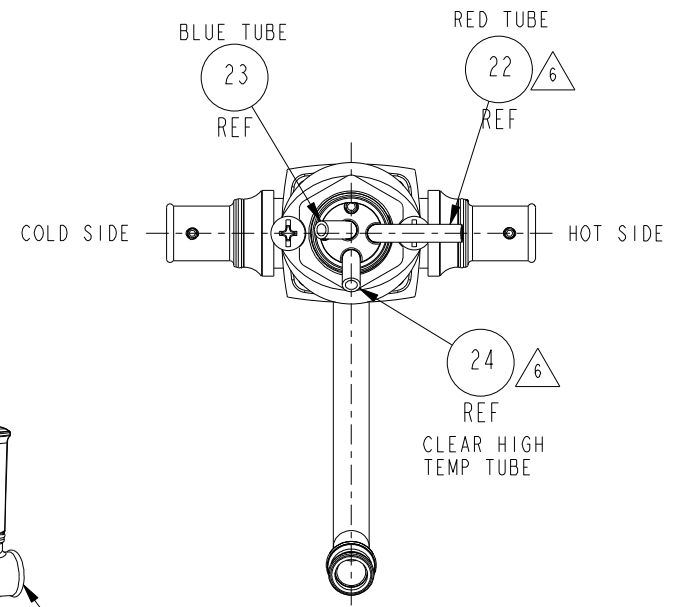
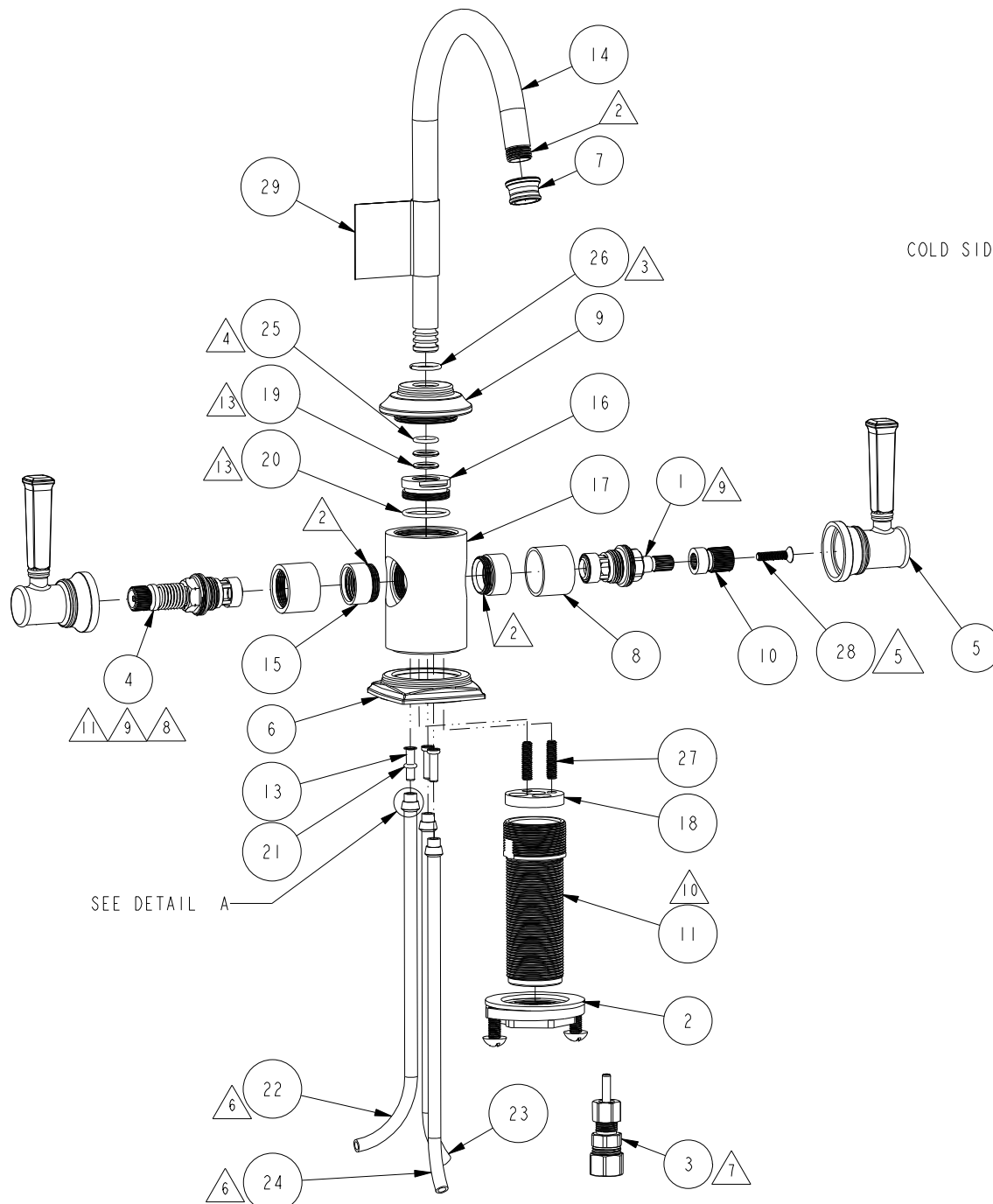
DWG NO. 3160-5603 REV B
SCALE .300 REF. - SHEET 1 OF 3

4

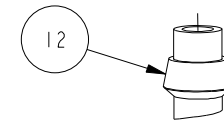
3

2

1



BOTTOM VIEW
SCALE .375



DETAIL A
SCALE 1.000

SEE DETAIL A

BRASSTECH		2001 E. CARNEGIE AVE. SANTA ANA, CA 92705 (949) 417-5207	
DWG NO.	3160-5603	REV	B
SCALE .300	REF. -	SHEET 2	OF 3

