

4

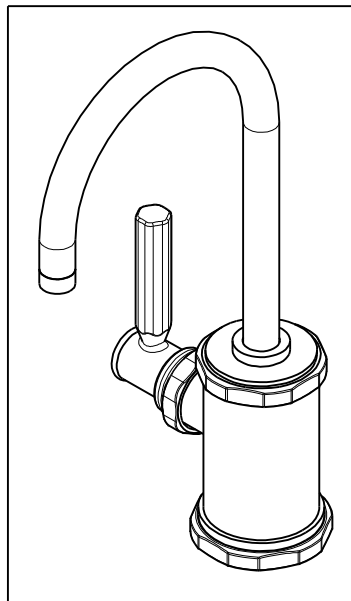
3

2

1

## NOTES:

- (N1) 1. FIT / FORM / FUNCTION SHALL FOLLOW PS-E.008.
- 2 APPLY LOCTITE 680.
- 3 CUT AND SHORTEN O-RING BY .13" TO .20" IN LENGTH BEFORE INSTALLING.
- 4 SLIT O-RING BEFORE INSTALLING.
- 5 APPLY LOCTITE 242.
- (N6) 6 CONNECT WHITE AND RED TUBINGS TOGETHER AND WATER TEST WHOLE UNIT.
- 7 BAG 5-035 IN A SEPARATE BAG.
- (N8) 8 REWORK CARTRIDGE ASSY IF THE HANDLE DOES NOT RETURN TO THE 'OFF' POSITION AUTOMATICALLY AFTER WATER TESTING.
- 9 INSTALLATION TORQUE: 8-14 LB-FT.
- 10 INSTALLATION TORQUE: 30 LB-FT.
- 11 LUBRICATE SPRING WITH DOW CORNING III SILICONE COMPOUND.
- 12 PRE-CRIMPED THESE PARTS TOGETHER. SEE INSTALLATION INSTRUCTION.
- 13 APPLY LIGHT FILM OF DOW CORNING III SILICONE COMPOUND.



## BILL OF MATERIAL (CURRENT LEVEL)

ITEM	PT/ASSY	DESCRIPTION	TYPE	QTY.
1	1-393	1-1/8 18 UNEF MOUNTING KIT	ASSEMBLY	1
2	5-035	COUPLING & INSERT ASM	ASSEMBLY	1
3	5-052	SPOUT ASM	ASSEMBLY	1
4	5-061	ADAPTER/CARTRIDGE ASSY	ASSEMBLY	1
5	20-292	HANDLE HUB ASM	ASSEMBLY	1
6	20-294	ESCUTCHEON ASM	ASSEMBLY	1
7	12512	BONNET	PART	1
8	12695	BODY CAP	PART	1
9	12949	1-1/8-18 UNEF MOUNTING NIPPLE	PART	1
10	50066	COMPRESSION RING, 1/2	PART	3
11	50068	INSERT, HOSE	PART	3
12	50714	WATER DISP. CAR.T HOLDER	PART	1
13	50717	WATER DISP SPOUT RETAINER	PART	1
14	50746	WATER DISP.BODY (HOT)	PART	1
15	50768	RETAINER PLATE	PART	1
16	91017	O-RING, #2- 012, EPDM, 65-75 DURO, NSF 61	PART	2
17	91023	O-RING, #2- 019, EPDM, 65-75 DURO, NSF 61	PART	1
18	91376	TUBE, RED, .250 OD X 4 FT	PART	1
19	91377	TUBE, BLUE, .250 OD X 4 FT	PART	1
20	91378	TUBE, HIGH TEMP, .250 OD X 4 FT	PART	1
21	91100	O-RING, #2-006, EPDM, 65-75 DURO	PART	3
22	91382	O-RING, #2- 012, TEFLON,	PART	1
23	91383	O-RING, #2- 014, TEFLON, NSF 61	PART	1
24	92016	SCRW, 10-24 X 3/4 SKT HD FLT PT SS	PART	2
25	98043	TAG LABEL, HOT WATER WARNING	PART	1

12

12

TESTING	-	-	-
ASSEMBLY	-	-	-
PLATING	-	-	-
POLISHING	-	NEXT ASSY	USED ON
MACHINING	-	APPLICATION	
TOOLING FIXTURE #	REMOVE ALL BURRS AND SHARP EDGES		

UNITS ARE: INCHES [MM]  
TOLERANCES ARE:  
FRACTIONS DECIMALS ANGLES  
 $\pm 1/16"$  .X  $\pm .1$  [2.5]  $\pm 1"$   
.XX  $\pm .06$  [1.5]

(X.XXX) DENOTES CRITICAL DIMS.  
ALL THREADS ARE CRITICAL

DRAWN JINSON 01/01/19  
CHECKED V.V. 01/01/19  
APPROVED V.V. 01/01/19

**BRASSTECH**  
INCORPORATED

2001 CARNEGIE AVE.  
SANTA ANA, CA 92705  
(949) 417-5207

WATER DISPENSER - HOT

DWG NO. 3190-5613

REV B

SCALE .375 REF. - SHEET 1 OF 3

4

3

2

1

A

A

B

B

C

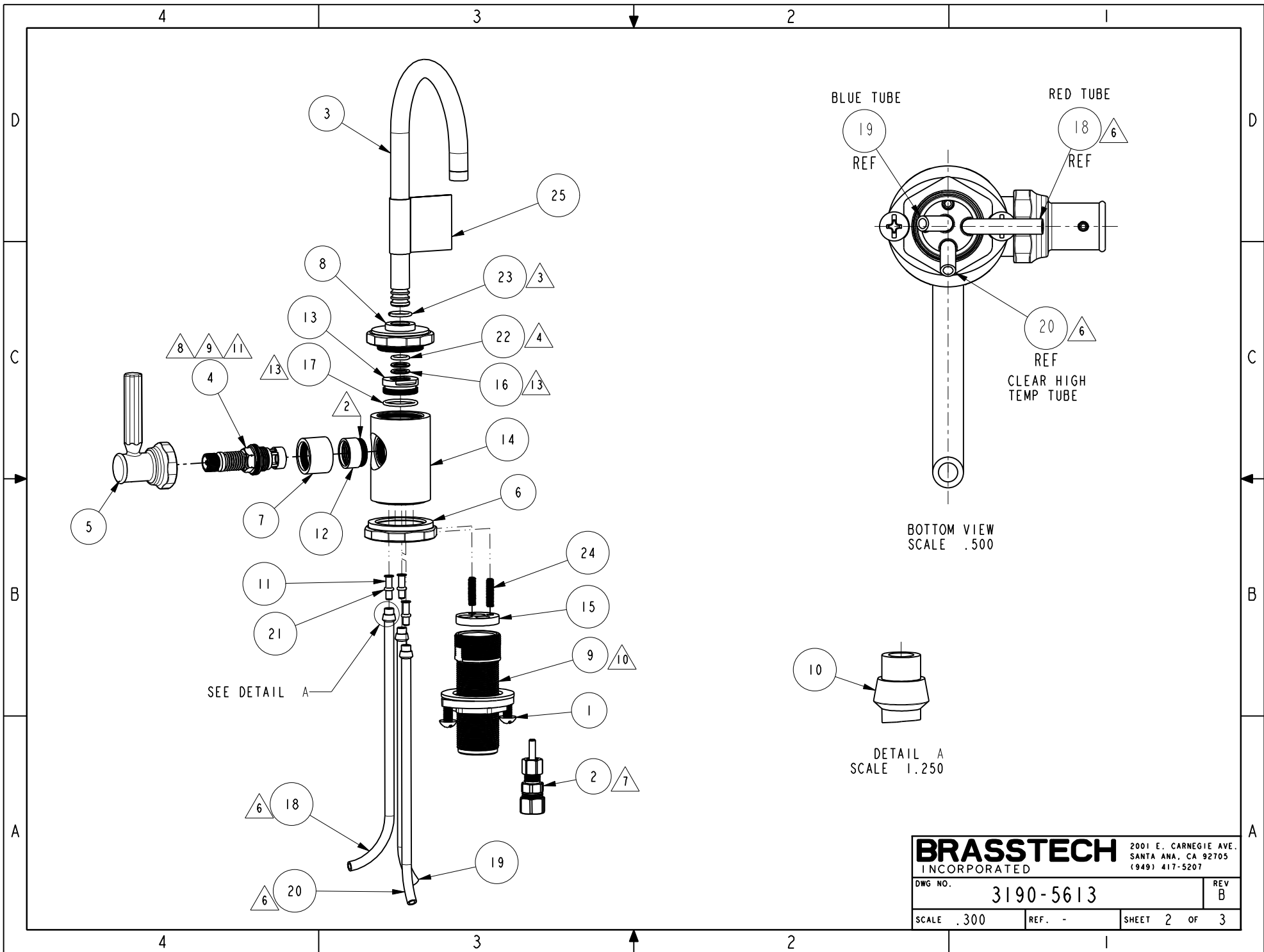
C

D

D

COPYRIGHT 2005 BRASSTECH, INC.  
THESE DRAWINGS AND THE DESIGNS  
DEPICTED HEREIN ARE THE PROPRIETARY  
PROPERTY OF BRASSTECH. ANY USE  
OR REPRODUCTION IS SUBJECT TO  
THE EXPRESS APPROVAL OF BRASSTECH.  
UNAUTHORIZED USE IS STRICTLY  
PROHIBITED. ALL RIGHTS RESERVED.

ZONE	REV	DESCRIPTION	DATE	APPROVED
-	B	EN-3558a	01/01/19	V.V.
-	A	EN-3693	08/29/18	J.M
-	-	EN-3229	08/21/17	J.M



<b>BRASSTECH</b>		2001 E. CARNEGIE AVE. SANTA ANA, CA 92705 (949) 417-5207	
DWG NO.	3190-5613	REV	B
SCALE .300	REF. -	SHEET 2	OF 3

