

## ONLY ONE COMPANY MAKES 10" & 15" INJECTION MOLDED GASKETED SEWER FITTINGS



Multi Fittings is the only manufacturer to offer gasketed 12" and 15" SDR 35 molded sewer fittings in a range of wyes, tees and elbows.

Ideal for wastewater and stormwater applications, as well as the conveyance of industrial wastes, our large diameter molded sewer fittings are designed to exceed all applicable standards and are built to withstand higher impact forces, higher loads and survive the roughest jobsite handling. The impact strength of our sewer fittings exceed the requirements of ASTM F1336 by at least 25%.

For over 50 years, Multi Fittings has been an industry leader in offering the most comprehensively engineered and tested fittings for plastic pipe in North America.

Multi Fittings produces the widest range of injection molded fittings for pressurized watermains and sewer forcemains, gravity flow sewers and drain, waste and vent applications.

### TRENCH TOUGH PLUS™

#### SIZES

4" & 15"

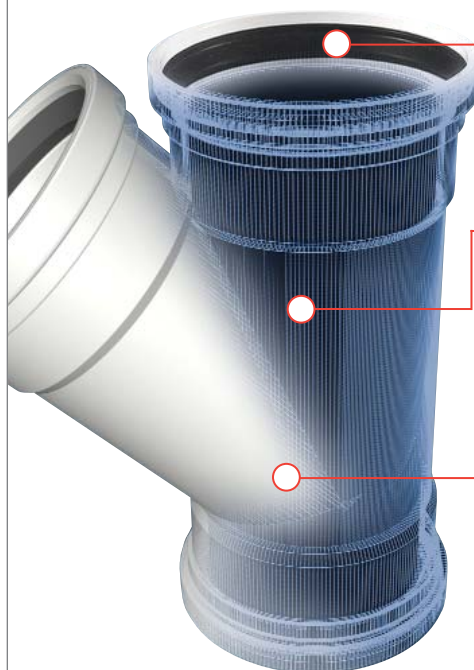


#### MULTI FITTINGS

Telephone: 519 681-2140

Toll Free: 800 265-1815

Fax: 519 681-2156



#### Locked-in Gasket Design

Makes assembling the joints easy, requiring less brute force in the trench, while ensuring leak-proof reliability in the ground.

#### Advanced Material Formulation

Leading crush-resistance, yet our fittings can flex to accommodate the extreme loads that cause rigid fittings to fail.

#### Structural Reinforcements

Reinforced at key intersecting locations where it's needed for added strength without losing flexibility.

*more information on back* ►

## FEATURES & BENEFITS

### Easy to Install

Lightweight and easy to handle; with the patented Trench Tough Plus locked-in gasket design.

### Joint Strength

Manufactured to allow for a high degree of joint deflection, reducing the risks caused by soil settlement or shifting.

### Structural Strength

Leads the industry in crush-resistance and able to handle extreme loads underground.

### Impact Strength

Designed to withstand the rigors of the job site, exceeding ASTM impact standards.



Telephone: 519 681-2140  
Toll Free: 800 265-1815  
Fax: 519 681-2156

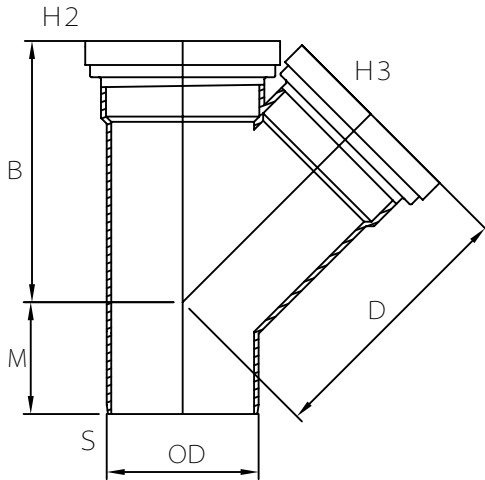


MULTI FITTINGS

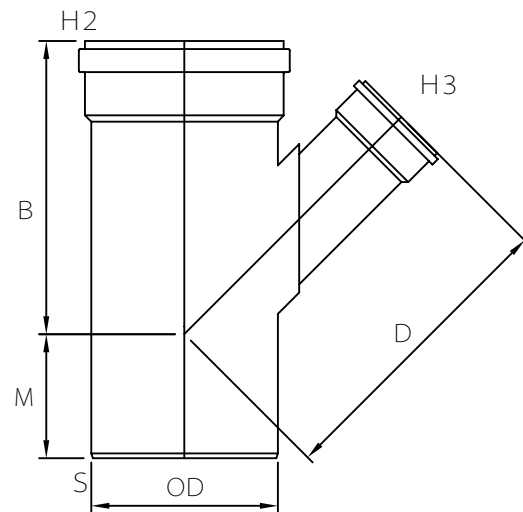
# LAYING LENGTH

ISSUE DATE: OCT 30/17  
SUPERCEDES: MAR 11/05

## 45 ° WYE (SxGxG)



INJECTED MOLDED FITTING (M)



FABRICATED FITTING (F)

	SIZE SxH2xH3	PART NUMBER	B REF	D REF	M REF	OD
M =	4x4x4	063883	7.250	7.500	3.250	4.215
M =	6x6x4	043868	10.500	10.750	3.625	6.275
M =	6x6x6	043869	10.125	10.500	5.000	6.275
M =	8x8x4	043870	12.875	11.000	4.000	8.400
M =	8x8x6	043871	14.750	13.375	5.500	8.400
P	8x8x8	043213	-	-	-	8.400
M =	10x10x4	043698	13.625	12.500	4.625	10.500
M =	10x10x6	043699	13.625	13.875	4.625	10.500
F@	10x10x10	043263	-	-	-	10.500
F@	12x12x12	043339	-	-	-	12.500
F@	12x12x4	043292	-	-	-	12.500
F@	12x12x6	043593	-	-	-	12.500
F@	15x15x4	043733	-	-	-	15.300
F@	15x15x6	043088	-	-	-	15.300
F@	18x18x4	043979	-	-	-	18.701

Note: = Refer to Page G4 for Hub Detail, Type A  
@ Refer to Page G5 for Hub Detail, Fabricated