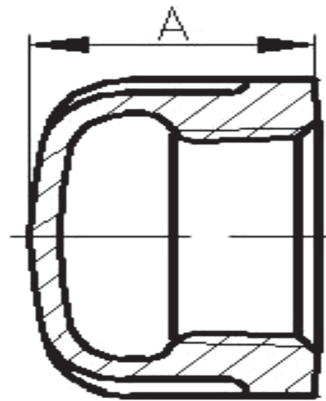


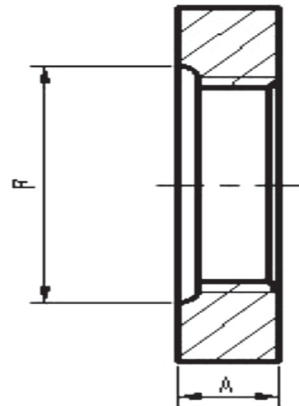
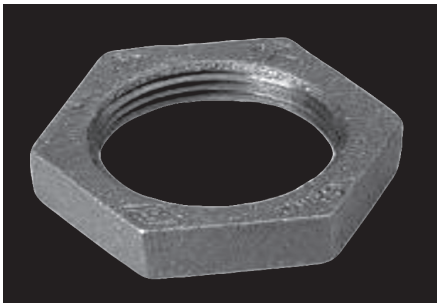
# Malleable Iron Fittings

## Cap



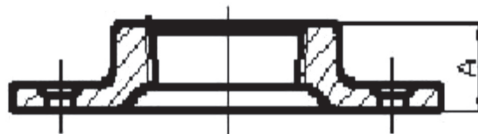
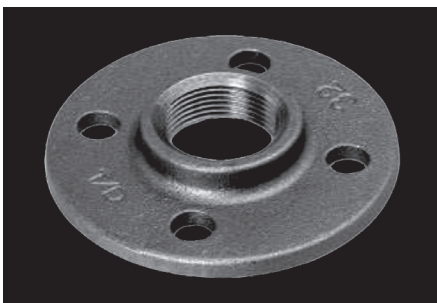
Size (in.)	Part Number	
	Black	Galv
1/8	IBCAPA	IGCAPA
1/4	IBCAPB	IGCAPB
3/8	IBCAPC	IGCAPC
1/2	IBCAPD	IGCAPD
3/4	IBCAPF	IGCAPF
1	IBCAPG	IGCAPG
1-1/4	IBCAPH	IGCAPH
1-1/2	IBCAPJ	IGCAPJ
2	IBCAPK	IGCAPK
2-1/2	IBCAPL	IGCAPL
3	IBCAPM	IGCAPM
4	IBCAPP	IGCAPP
5	IBCAPS	IGCAPS
6	IBCAPU	IGCAPU

## Locknut



Size (in.)	Part Number	
	Black	Galv
1	IBLNG	

## Floor Flange



Size (in.)	Part Number	
	Black	Galv
1/2	IBFFD	IGFFD
3/4	IBFFF	IGFFF
1	IBFFG	IGFFG
1-1/4	IBFFH	IGFFH
1-1/2	IBFFJ	IGFFJ
2	IBFFK	IGFFK