

150# Malleable Fittings • Spec Sheet

THAILAND

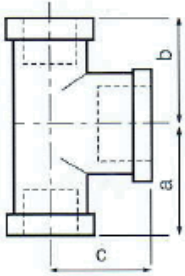


- Black & Galvanized
- Meets or exceeds all applicable ASTM and ANSI standards
- Stocked from 1/8" through 6" diameters
- 100% pressure tested before leaving the factory
- UL and FM approved

150# Malleable Fittings • Spec Sheet

THAILAND

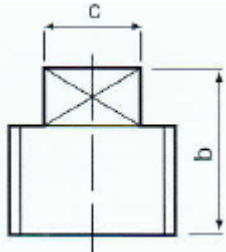
Bull Head Tee



Size	1/2x1/2x3/4	3/4x3/4x1	3/4x3/4x1-1/4	1x1x1-1/4	1x1x1-1/2
A	1.22	1.45	1.62	1.67	1.80
B	1.22	1.45	1.62	1.67	1.80
C	1.20	1.37	1.45	1.58	1.65

Size	1x1x2	1-1/4x1-1/4x1-1/2	1-1/4x1-1/4x2	1-1/2x1-1/2x2	2x2x2-1/2
A	2.02	1.88	2.10	2.16	2.60
B	2.02	1.88	2.10	2.16	2.60
C	1.93	1.82	1.90	2.02	2.39

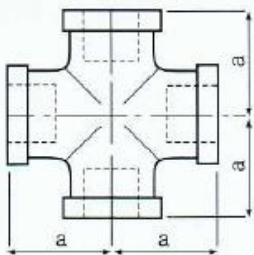
Square Head Plug



Size	1/8	1/4	3/8	1/2	3/4	1	1-1/4
B	0.61	0.72	0.80	0.95	1.07	1.25	1.36
C	0.28	0.37	0.43	0.56	0.62	0.81	0.94

Size	1-1/2	2	2-1/2	3	4	5	6
B	1.42	1.58	1.93	1.93	2.29	2.92	2.88
C	1.13	1.31	1.32	1.69	2.28	2.70	3.01

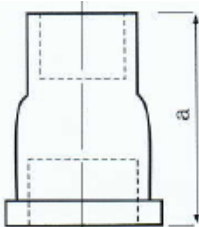
Cross



Size	1/8	1/4	3/8	1/2	3/4	1
A	0.69	0.81	0.95	1.12	1.31	1.50

Size	1-1/4	1-1/2	2	2-1/2	3	4
A	1.75	1.94	2.25	2.70	3.08	3.79

Extension Piece



Size	1/2	3/4	1	1-1/4	1-1/2	2
A	1.69	1.89	2.17	2.36	2.48	2.76