

150# Malleable Fittings • Spec Sheet

CHINESE

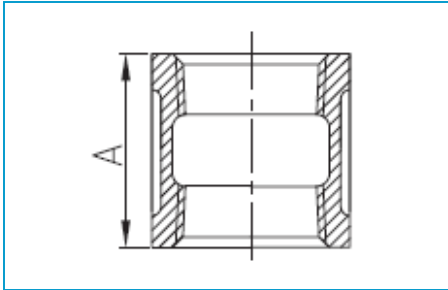


- Black & Galvanized
- Material: ASTM A197/A197M
- Dimensions:
 - ASME B16.3 covering 90° Elbows, 45° Elbows, Couplings, Reducers, 90° Street Elbows, 45° Street Elbows, Caps, Tees
 - ASME B16.39 covering Unions
 - ASME B16.14 covering Bushings, Plugs
- Threads: ASME B1.201
- Available: 1/8" through 6"
- Approvals: UL & FM approved

150# Malleable Fittings • Spec Sheet

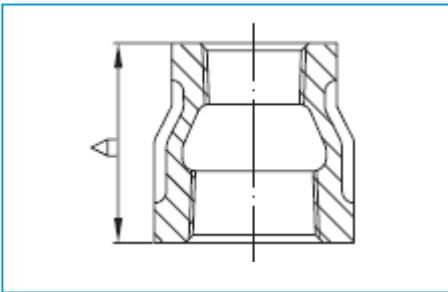
CHINESE

Coupling



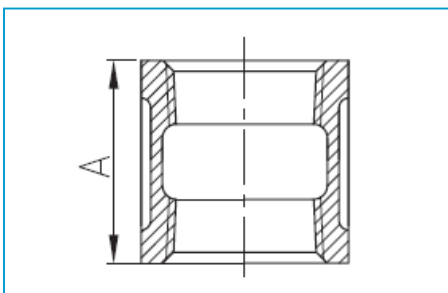
Size	1/8	1/4	3/8	1/2	3/4	1	1-1/4
A	0.95	1.06	1.16	1.34	1.54	1.67	1.93
Size	1-1/2	2	2-1/2	3	4	5	6
A	2.15	2.53	2.88	3.18	3.69	3.74	4.14

Reducing Coupling



Size	1/4x1/8	3/8x1/8	3/8x1/4	1/2x1/8	1/2x1/4	1/2x3/8	3/4x1/8
A	1.00	1.13	1.13	1.25	1.25	1.25	1.44
Size	3/4x1/4	3/4x3/8	3/4x1/2	1x1/4	1x3/8	1x1/2	1x3/4
A	1.44	1.44	1.44	1.69	1.69	1.69	1.69
Size	1-1/4x3/8	1-1/4x1/2	1-1/4x3/4	1-1/4x1	1-1/2x3/8	1-1/2x1/2	1-1/2x3/4
A	2.06	2.06	2.06	2.06	2.31	2.31	2.31
Size	1-1/2x1	1-1/2x1-1/4	2x3/8	2x1/2	2x3/4	2x1	2x1-1/4
A	2.31	2.31	2.81	2.81	2.81	2.81	2.81
Size	2x1-1/2	2-1/2x1/2	2-1/2x3/4	2-1/2x1	2-1/2x1-1/4	2-1/2x1-1/2	
A	2.81	3.25	3.25	3.25	3.25	3.25	
Size	2-1/2x2	3x1/2	3x3/4	3x1	3x1-1/4	3x1-1/2	3x2
A	3.25	3.69	3.69	3.69	3.69	3.69	3.69
Size	3x2-1/2	4x1-1/2	4x2	4x2-1/2	4x3		
A	3.69	4.39	4.39	4.39	4.39		

Right & Left Coupling



Size	1/2	3/4	1	1-1/4	1-1/2	2
A	1.34	1.52	1.67	1.93	2.15	2.53
Size	2-1/2	3	4			
A	2.88	3.18	3.69			