

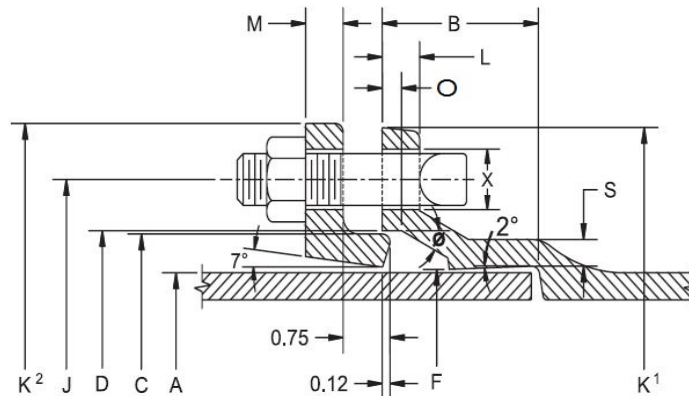
DOMESTIC

NON-DOMESTIC

SUBMITTAL: C110 MECHANICAL JOINT PRODUCT

[\(Current revisions for the noted Standards apply\)](#)

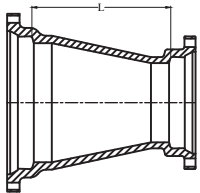
- SIZES:** 2" - 48"
- STANDARDS:** ANSI/AWWA C110/A21.10, NFPA 13/24, 3" - 12" UL listed and approved (File - Tyler Union)
- MATERIAL:** Cast of ASTM A536 qualified ductile iron. Date code is cast on and required for traceability.
- PRESSURE RATING:** *Flanged fittings rated at 250 psi. Mechanical joints 2" - 24" rated at 350 psi and 30" - 48" at 250 psi.
*Note: With rubber annular ring flange gasket, 2" - 24" Flanged fittings can be rated at 350 psi.
Note: Wyes over 12" are not pressure rated. Contact Tyler Union for rating in your application.
- DEFLECTION:** Joint deflection 5° max for 2"- 12" and 3° max for 14"- 48". Reduces by 50% at nominal pipe & fitting diameters
- NSF-61 & NSF372:** Meets all requirements including Annex G, Tyler Union's Underwriters Laboratory listing MH16439.
- ASPHALT COATING:** Per ANSI/AWWA C104/A21.4 and ANSI/AWWA C110/A21.10.
- CEMENT LINING:** Per ANSI/AWWA C104/A21.4, with double cement lining available upon request.
- EPOXY COATING:** Fusion bonded epoxy per ANSI/AWWA C116/A21.16. Additional coatings available upon request.
- BARE FITTINGS:** Available upon request.
- FASTNERS:** High strength low alloy weathering steel per ANSI/AWWA C111/A21.11 and ASTM A242
- INSTALLATION:** Install per AWWA C600/C651 using pipe conforming to ANSI/AWWA C151/A21.51 or AWWA C900/905.



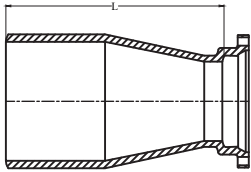
NOMINAL JOINT DIMENSIONS IN INCHES

Size Inches	A Dia. DI Pipe	B Hub Depth	C Dia. GLAND	D Dia.	F Dia.	Ø	X	J Dia. GLAND	K ¹ Dia.	K ² Dia. GLAND	L	M GLAND	O	S	Qty. BOLTS
2	2.51	2.50	3.39	3.50	2.61	28°	3/4	4.75	6.25	6.25	0.73	0.62	0.31	0.44	2
3	3.96	2.50	4.84	4.94	4.06	28°	3/4	6.19	7.69	7.69	0.94	0.62	0.31	0.52	4
4	4.80	2.50	5.92	6.02	4.90	28°	7/8	7.50	9.12	9.12	1.00	0.75	0.31	0.65	4
6	6.90	2.50	8.02	8.12	7.00	28°	7/8	9.50	11.12	11.12	1.06	0.88	0.31	0.70	6
8	9.05	2.50	10.17	10.27	9.15	28°	7/8	11.75	13.37	13.37	1.12	1.00	0.31	0.75	6
10	11.10	2.50	12.22	12.34	11.20	28°	7/8	14.00	15.69	15.62	1.19	1.00	0.31	0.80	8
12	13.20	2.50	14.32	14.44	13.30	28°	7/8	16.25	17.94	17.88	1.25	1.00	0.31	0.85	8
14	15.30	3.50	16.40	16.54	15.44	28°	7/8	18.75	20.31	20.25	1.31	1.25	0.31	0.89	10
16	17.40	3.50	18.50	18.64	17.54	28°	7/8	21.00	22.56	22.50	1.38	1.31	0.31	0.97	12
18	19.50	3.50	20.60	20.74	19.64	28°	7/8	23.25	24.83	24.75	1.44	1.38	0.31	1.05	12
20	21.60	3.50	22.70	22.84	21.74	28°	7/8	25.50	27.08	27.00	1.56	1.44	0.31	1.12	14
24	25.80	3.50	26.90	27.04	25.94	28°	7/8	30.00	31.58	31.50	1.62	1.56	0.31	1.22	16
30	32.00	4.00	33.29	33.46	32.17	20°	1-1/8	36.88	39.12	39.12	1.81	2.00	0.38	1.50	20
36	38.30	4.00	39.59	39.76	38.47	20°	1-1/8	43.75	46.00	46.00	2.00	2.00	0.38	1.80	24
42	44.50	4.00	45.79	45.96	44.67	20°	1-3/8	50.62	53.12	53.12	2.00	2.00	0.38	1.95	28
48	50.80	4.00	52.09	52.26	50.97	20°	1-3/8	57.50	60.00	60.00	2.00	2.00	0.38	2.20	32

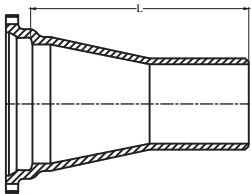
C110 DUCTILE IRON FULL BODY FITTINGS



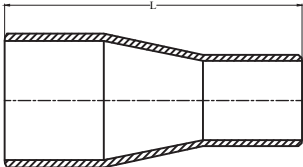
MJ x MJ



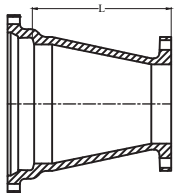
PE x MJ-SEB



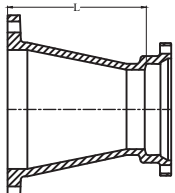
MJ-LEB x PE



PE x PE



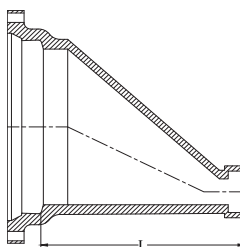
MJ x FE



FE x MJ

REDUCERS												
Size	Laying Length (L)						Weight					
	MJ	SEB	MJ-LEB	PE x PE	FE x MJ	MJ x FE	MJ	MJ-SEB	MJ-LEB	PE x PE	FE x MJ	MJ x FE
* 3x2	6	14	14	—	—	—	24	24	24	—	—	—
* 4x2	7	15	15	—	—	—	31	30	31	—	—	—
4x3	7	15	15	23	7	7	37	38	37	34	34	35
* 6x2	9	17	17	—	—	—	46	43	47	—	—	—
6x3	9	17	17	25	—	9	55	50	55	—	—	50
6x4	9	17	17	25	9	9	56	60	59	57	53	62
8x3	11	19	19	27	—	—	84	77	70	—	—	—
8x4	11	19	19	27	11	11	84	82	84	—	73	75
8x6	11	19	19	27	11	11	94	90	93	96	84	80
10x6	12	20	20	28	12	12	115	116	117	—	100	105
10x8	12	20	20	28	12	12	142	135	130	135	130	130
12x4	14	22	22	30	—	—	139	131	—	—	—	—
12x6	14	22	22	30	14	12	148	150	153	...	145	130
12x8	14	22	22	30	14	12	173	168	165	168	170	175
12x10	14	22	22	30	14	12	194	190	178	185	188	190
14x6	16	24	24	32	—	16	—	—	—	—	—	195
14x8	16	24	24	32	—	16	—	—	—	—	—	215
14x12	16	24	24	32	—	16	—	—	—	—	—	270
16x6	18	26	26	34	—	—	250	...	—	—	—	—
16x8	18	26	26	34	—	—	288	248	—	—	—	—
16x10	18	26	26	34	—	—	300	...	—	—	—	—
16x12	18	26	26	34	18	18	330	304	325	—	305	325
16x14	18	26	26	34	—	—	370	—	—	—	—	—
18x8	19	27	27	35	—	19	320	—	—	—	—	300
18x10	19	27	27	35	—	—	388	—	—	—	—	—
18x12	19	27	27	35	—	19	380	355	—	—	—	405
18x14	19	27	27	35	—	—	450	...	—	—	—	—
18x16	19	27	27	35	—	19	476	...	—	—	—	445
20x10	20	28	28	36	—	—	410	...	—	—	—	—
20x12	20	28	28	36	—	—	515	420	—	—	—	—
20x16	20	28	28	36	—	20	578	525	510	—	—	510
20x18	20	28	28	36	—	...	575	...	—	—	—	—
24x12	24	32	32	40	—	24	610	570	—	—	—	455
24x16	24	32	32	40	—	—	705	665	753	—	—	—
24x18	24	32	32	40	—	—	789	720	—	—	—	—
24x20	24	32	32	40	—	—	815	775	804	—	—	—
*30x16	30	38	38	46	—	—	1150	1040	—	1015	—	—
30x18	30	38	38	46	—	—	1160	1050	—	1025	—	—
30x20	30	38	38	46	—	—	1225	1120	—	1090	—	—
30x24	30	38	38	46	—	—	1360	1255	1320	1215	—	—
36x20	36	44	44	52	—	—	1495	—	1466	—	—	—
36x24	36	44	44	52	—	—	1580	—	1535	1389	—	—
36x30	36	44	44	52	—	—	1919	1721	...	1585	—	—
42x24	42	50	50	58	—	—	2060	—	—	—	—	—
42x30	42	50	50	58	—	—	2370	—	—	—	—	—
42x36	42	50	50	58	—	—	2695	—	—	—	—	—
48x30	48	56	56	64	—	—	3005	—	—	—	—	—
48x36	48	56	56	64	—	—	3370	—	—	—	—	—
48x42	48	56	56	64	—	—	3750	—	—	—	—	—

Tyler Union does not recommend the use of wedge action restraints on plain end fittings



MJxFIPT Eccentric Reducer		
Size	L	Weight
6x2	13	51
8x2	15	71