



Ductile Iron Flanged Fittings
ANSI/AWWA C110/A21.10

GENERAL SPECIFICATIONS

- MATERIAL: Ductile iron per ASTM A536
PRESSURE: 250 PSI rating for 1" - 48" sizes and 150 PSI rating for 54" - 64"
TESTING: In accordance with ANSI/AWWA C110/A21.10, UL and FM requirements
LAYING LENGTH: 2" - 48" sizes in accordance with ANSI/AWWA C110/A21.10 and ANSI B16.1 and 54" - 64" sizes in accordance with ANSI/AWWA C153/A21.53
WEIGHTS: Are in pounds, unless noted otherwise and do not include accessories, cement lining and coatings
DRILLING: In accordance with ANSI/AWWA C110/A21.10, ANSI/AWWA C153/A21.53 and ANSI B16.1 Class 125 Flanges
CEMENT LINING: In accordance with ANSI/AWWA C104/A21.4 -- sizes 1" - 3" single thickness and sizes 4" - 64" double thickness
COATING: Asphaltic seal coat inside in accordance with ANSI/AWWA C104/A21.4 and prime coat outside
APPROVALS: 2" - 12" Underwriters Laboratories and ULC Listed and Factory Mutual approved for 300 PSI rating. Please consult factory for detail listing and approvals.
DIMENSIONS: All dimensions are in inches unless noted otherwise.
INSTALLATION: Per ANSI/AWWA C110 and C111



SUBMITTAL INFORMATION
PROJECT NAME:
ENGINEER:
CONTRACTOR:
SPEC. SECTION:

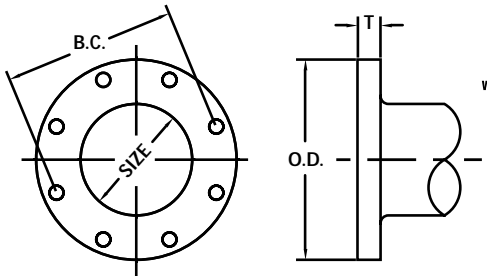


Table with 7 columns: NOM. SIZE, O.D., B.C., T, BOLT HOLE DIA., SIZE, NO. It lists specifications for various pipe sizes from 1 inch to 64 inches.

SIZE RANGE (Please specify):

Size Range _____

LINING OPTIONS (Please check one):

- Standard: Cement-lined and asphalt seal coat per ANSI/AWWA C104/A21.4 and UL/NSF-61
Optional: FBE (Fusion Bonded Epoxy) per ANSI/AWWA C116/A21.15 and UL/NSF-61 - ID & OD Only
Optional: P401 (Protecto 401) Ceramic Epoxy - sewer applications only. Not NSF-61
Optional: Other (specify) _____

COATING OPTIONS (Please check one):

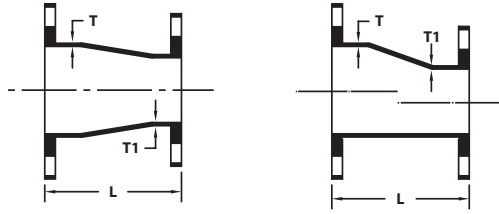
- Standard: Red Prime Coat
Optional: Asphaltic seal coat per ANSI/AWWA C104/A21.4
Optional: FBE (Fusion Bonded Epoxy) per ANSI/AWWA C116/A21.15 and UL/NSF-61 - ID & OD Only
Optional: Other (specify) _____





Flanged Fittings

ANSI/AWWA C110/A21.10



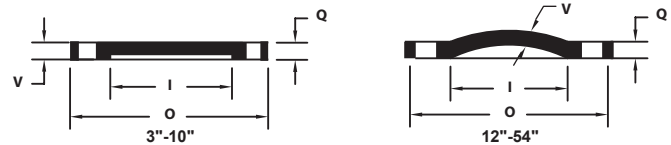
FE CONCENTRIC & ECCENTRIC REDUCERS

NOM. SIZE	T	T1	L	WT (LBS.)
2 x 1 1/2	0.31	0.31	5.50	10
2 1/2 x 2	0.31	0.31	5.50	14
3 x 2	0.48	0.31	6.00	16
3 x 2 1/2	0.48	0.31	6.00	21
4 x 2	0.52	0.31	7.00	25
4 x 2 1/2	0.52	0.31	7.00	28
4 x 3	0.52	0.48	7.00	30
5 x 2	0.50	0.31	8.00	34
5 x 2 1/2	0.50	0.31	8.00	35
5 x 3	0.50	0.48	8.00	37
5 x 4	0.50	0.50	8.00	41
6 x 1 1/2	0.55	0.31	9.00	33
6 x 2	0.55	0.31	9.00	35
6 x 2 1/2	0.55	0.31	9.00	38
6 x 3	0.55	0.48	9.00	40
6 x 4	0.55	0.52	9.00	45
6 x 5	0.55	0.52	9.00	52
8 x 3	0.60	0.48	11.00	60
8 x 4	0.60	0.52	11.00	65
8 x 5	0.60	0.52	11.00	70
8 x 6	0.60	0.55	11.00	75
10 x 3	0.68	0.48	12.00	81
10 x 4	0.68	0.52	12.00	85
10 x 6	0.68	0.55	12.00	90
10 x 8	0.68	0.60	12.00	110
12 x 4	0.75	0.52	14.00	120
12 x 5	0.75	0.50	14.00	126
12 x 6	0.75	0.55	14.00	130
12 x 8	0.75	0.60	14.00	145
12 x 10	0.75	0.68	14.00	170
14 x 6	0.66	0.55	16.00	155
14 x 8	0.66	0.60	16.00	175
14 x 10	0.66	0.68	16.00	190
14 x 12	0.66	0.75	16.00	220
16 x 6	0.70	0.55	18.00	190
16 x 8	0.70	0.60	18.00	210
16 x 10	0.70	0.68	18.00	235
16 x 12	0.70	0.75	18.00	265
16 x 14	0.70	0.66	18.00	280
18 x 8	0.75	0.60	19.00	240
18 x 10	0.75	0.68	19.00	265
18 x 12	0.75	0.75	19.00	295
18 x 14	0.75	0.66	19.00	310
18 x 16	0.75	0.70	19.00	340
20 x 8	0.80	0.60	20.00	290
20 x 10	0.80	0.68	20.00	310
20 x 12	0.80	0.75	20.00	345
20 x 14	0.80	0.66	20.00	355
20 x 16	0.80	0.70	20.00	390

(Con't)➔

FE CONCENTRIC & ECCENTRIC REDUCERS (Con't)

NOM. SIZE	T	T1	L	WT (LBS.)
20 x 18	0.80	0.75	20.00	410
24 x 10	0.89	0.68	24.00	450
24 x 12	0.89	0.75	24.00	480
24 x 14	0.89	0.66	24.00	490
24 x 16	0.89	0.70	24.00	525
24 x 18	0.89	0.75	24.00	550
24 x 20	0.89	0.80	24.00	590
30 x 8	1.03	0.60	30.00	700
30 x 12	1.03	0.75	30.00	730
30 x 14	1.03	0.66	30.00	752
30 x 16	1.03	0.70	30.00	770
30 x 18	1.03	0.75	30.00	810
30 x 20	1.03	0.80	30.00	870
30 x 24	1.03	0.89	30.00	970
36 x 16	1.15	0.70	36.00	1105
36 x 20	1.15	0.80	36.00	1230
36 x 24	1.15	0.89	36.00	1345
36 x 30	1.15	1.03	36.00	1555
42 x 20	1.28	0.80	42.00	1712
42 x 24	1.28	0.89	42.00	1820
42 x 30	1.28	1.03	42.00	2060
42 x 36	1.28	1.15	42.00	2345
48 x 30	1.42	1.03	48.00	2625
48 x 36	1.42	1.15	48.00	2950
48 x 42	1.42	1.28	48.00	3320
54 x 24	0.90	0.89	32.00	1820
54 x 30	0.90	0.61	32.00	1625
54 x 36	0.90	0.66	28.00	1680
54 x 42	0.90	0.76	25.00	1800
54 x 48	0.90	0.80	18.00	1695
60 x 54	0.94	0.90	15.00	2055



BLIND FLANGES (SOLID OR TAPPED)

NOM. SIZE	O	Q	V	I	WT (LBS.)
3	7.50	0.75	0.69	3.00	9
4	9.00	0.94	0.88	4.00	16
6	11.00	1.00	0.94	6.00	25
8	13.50	1.12	1.06	8.00	42
10	16.00	1.19	1.12	10.00	63
12	19.00	1.25	0.81	12.00	85
14	21.00	1.38	0.88	14.00	120
16	23.50	1.44	1.00	16.00	145
18	25.00	1.56	1.06	18.00	164
20	27.50	1.69	1.12	20.00	245
24	32.00	1.88	1.25	24.00	318
30	38.75	2.12	1.44	30.00	500
36	46.00	2.38	1.62	36.00	960
42	53.00	2.62	1.81	42.00	1300
48	59.50	2.75	2.00	48.00	1740
54	66.25	3.00	2.25	54.00	2233
60	73.00	3.12	2.38	60.00	2845
64	80.00	3.38	2.56	64.00	3744

STAR[®] PIPE PRODUCTS