

EQUAL
TEE

MOLDED
FOR YOUR
INDUSTRY

IntegriFuseTM



 **INTEGRITY**
Fusion Products, Inc.

TOLL FREE 1-888-770-6330

INTEGRITYFUSION.COM

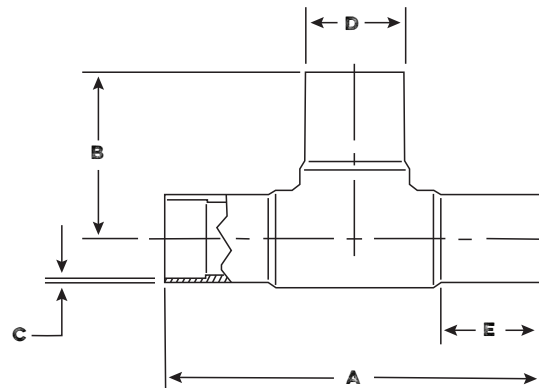
The difference MOLDED Makes

Integrity Fusion continues to be the market leader in electrofusion fittings, by offering innovative solutions to all of your fusible needs. Our IntegriFuse brand EF Equal Tees are molded in sizes up through 8" IPS and fully pressure rated to SDR 11. The EF Tees are manufactured with electrofusion outlets on the mainline, and butt fusion on the outlet, allowing the installer several options when connecting the lateral line. Electrofusion Tees offer a convenient alternative to traditional butt fusion when dealing with tight spaces, repairs, vertical applications, or any project when difficult to utilize butt fusion equipment.

IntegriFuse EF Fittings are manufactured from the highest quality black high density bimodal polyethylene copolymer resin designed for use in, but not limited to, potable water, natural gas, industrial, landfill, oil & gas, and mining applications.

All IntegriFuse fittings meet ASTM –D2513 & ASTM D3261 (where applicable).
FM Approved.

Integrity Fusion Products, Inc.
270 Parkade Court
Peachtree City, GA 30269
P: 1-888-770-6330 • P: 770-632-7530
F: 770-632-7540
E: Info@IntegrityFusion.com



IPS-SDR 17 - 125 PSI (Working Pressure at 73.4° F)

Nominal Size	A	B	C	D	E	Weight	Item Code
3" IPS	11.81"	5.91"	0.206"	3.500"	3.54"	1.5 lbs.	100709
4" IPS	13.78"	6.89"	0.264"	4.500"	3.94"	2.8 lbs.	100713
6" IPS	18.11"	9.06"	0.390"	6.625"	4.72"	7.5 lbs.	100717
8" IPS	23.62"	11.81"	0.507"	8.625"	5.71"	17.5 lbs.	100721
10" IPS	27.56"	13.78"	0.632"	10.750"	6.30"	28.3 lbs.	100725
12" IPS	31.57"	15.97"	0.750"	12.750"	7.52"	47.5 lbs.	100727
14" IPS	25.50"	14.70"	0.923"	14.26"	4.52"	48.0 lbs.	100751
16" IPS	29.80"	15.29"	1.070"	16.25"	5.25"	66.0 lbs.	100753

IPS-SDR 11 - 200 PSI (Working Pressure at 73.4° F)

Nominal Size	A	B	C	D	E	Weight	Item Code	Notes
¾" IPS	6.38"	3.19"	0.095"	1.050"	2.14"	0.2 lbs.	100700	-
1" IPS	6.62"	3.31"	0.120"	1.315"	2.18"	0.2 lbs.	100701	-
1 ¼" IPS	6.97"	3.48"	0.151"	1.660"	2.15"	0.4 lbs.	100702	-
1 ½" IPS	7.84"	3.92"	0.173"	1.900"	2.37"	0.6 lbs.	100704	-
2" IPS	8.66"	4.33"	0.216"	2.375"	2.48"	1.0 lbs.	100705	FM 200
3" IPS	11.81"	5.91"	0.318"	3.500"	3.54"	1.5 lbs.	100708	FM 200
4" IPS	13.78"	6.89"	0.409"	4.500"	3.94"	3.9 lbs.	100712	FM 200
6" IPS	18.11"	9.06"	0.602"	6.625"	4.72"	10.5 lbs.	100716	FM 200
8" IPS	23.62"	11.81"	0.784"	8.625"	5.71"	23.2 lbs.	100720	FM 200
10" IPS	27.56"	13.78"	0.977"	10.750"	6.30"	39.4 lbs.	100724	FM 200
12" IPS	31.57"	15.97"	1.159"	12.750"	7.52"	66.3 lbs.	100726	FM 200
14" IPS	31.75"	14.56"	1.300"	14.020"	6.50"	70.0 lbs.	100750	-
16" IPS	29.90"	15.30"	1.072"	16.270"	5.14"	94.0 lbs.	100752	-

