



## Certa-Lok® Yelomine® Specifications & Dimensions Restrained Joint PVC Pressure Piping System

### GENERAL INFORMATION

The Certa-Lok Restrained Joint System provides a noncorrosive restrained joint by utilizing precision-machined grooves on the pipe and in the bell/coupling that, when aligned, allow a spline to be inserted, locking the pipe and bell/coupling together. A flexible elastomeric seal (O-ring) in the coupling provides a hydraulic seal.

Certa-Lok Yelomine pipe and couplings are manufactured from our specially formulated Yelomine PVC compound that contains impact modifiers and ultraviolet inhibitors to give higher impact strength over an extended period of time. Our Yelomine PVC compound meets or exceeds cell classification 12454 per ASTM D1784.

#### Short Form Specifications

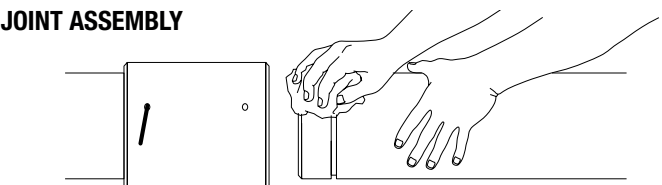
<b>Pipe Standard:</b>	ASTM D2241
<b>Diameter Standard:</b>	Iron Pipe Size (IPS)
<b>Standard Lay Length:</b>	20'
<b>Pipe Compound:</b>	ASTM D1784 Class 12454 with Yelomine Technology
<b>Pipe Joint Std.:</b>	ASTM D3139
<b>Gasket Standard:</b>	ASMT F477
<b>Installation Std.:</b>	ASTM D2774

Applications	Potable Water	Waste-water	Reclaimed Water
<b>Color:</b>	Yellow	Green	Purple
<b>Certifications:</b>	NSF 61	None	None

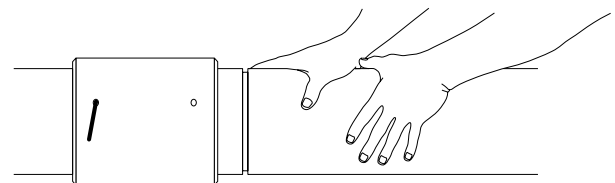
#### Table of Contents

Bending .....	2
Restrained Joint Integral Bell (RJIB).....	4
Restrained Joint (RJ).....	5
Nipples .....	7
Fluid-Tite, High-Deflection, Stop & Repair Couplings.....	9
Expansion & Tapped Couplings.....	10
Transition Fittings.....	12
Wyes & Tees .....	16
Elbows.....	17
Sweeps.....	18

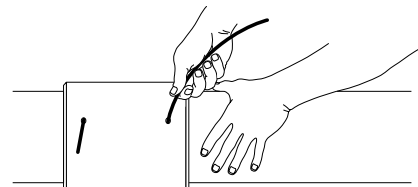
### JOINT ASSEMBLY



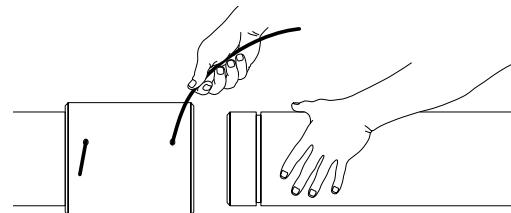
- 1**  
Clean and adequately lubricate pipe spigot and O-ring gasket sealing surface.



- 2**  
Arrange pipe and coupling such that they are in straight alignment. Insert pipe into Certa-Lok bell/coupling by applying evenly distributed, continuous pressure across the joint. Pipe and bell/coupling should be protected from damage during joint assembly.



- 3**  
The spline is then inserted through the insertion hole in the bell/coupling, until it is fully seated. This securely locks the joint. The gasket provides a hydraulic seal.



- 4**  
When needed, the joint can be disassembled and reused.  
Note: Disassembly of permanent joints may require substantial force. O-rings and splines should be inspected upon disassembly and replaced if damaged for both non-permanent and permanent style joints.



# Certa-Lok® Yelomine® Specifications & Dimensions

## Restrained Joint PVC Pressure Piping System

### DEFINITIONS & ABBREVIATIONS

C/L	Certa-Lok
C/LM	Certa-Lok Grooved (male) Pipe End
FIPT	IPS (female) Pipe Thread (NPT)
SW	Solvent Weld
C/LF	Certa-Lok Gasketed (female)
MIPT	IPS (male) Pipe Thread (NPT)
SWBE	Solvent Weld Bell End
PE	Plain End
HP	High Pressure
DT	Double Tapped
IB	Integral Bell
SMG	Standard Metal Groove

### FLEXIBILITY

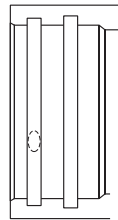
Certa-Lok Yelomine can bend easily around many obstructions, typically reducing the number of fittings required. The pipe should not be bent to a lesser (tighter) radius than shown.

Pipe Diameter	Minimum Bend Radius (ft.)	Offset/20 ft. (in.)
2"	40	59
3"	58	41
4"	75	32
6"	110	22
8"	144	17
10"	179	13
12"	213	11
14"	233	10
16"	267	9

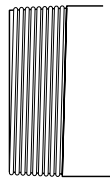
**C/LM (male)**



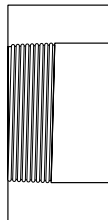
**C/LF (female)**



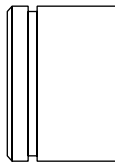
**MIPT**



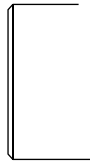
**FIPT**



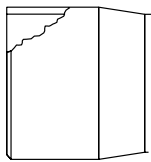
**SMG**



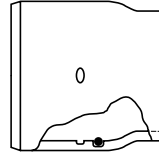
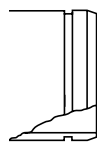
**PE**



**SWBE**



**IB**





## Certa-Lok® Yelomine® Specifications & Dimensions

### Restrained Joint PVC Pressure Piping System

CERTA-LOK NIPPLE C/L MALE x PLAIN END					
Size (in.)	PSI	WT./PC (lbs.)	OD (in.)	L (in.)	Part No.
2"	250	0.60	2.375	7.0	705847
3"	250	1.40	3.500	9.0	705854
4"	250	2.30	4.500	10.0	705861
4" HP	315	3.10	4.500	10.0	706646
6"	250	5.20	6.625	12.0	705878
6" HP	315	7.20	6.625	12.0	706653
8"	250	9.70	8.625	13.0	705885
8" HP	315	13.80	8.625	13.0	706660
10"	200	11.07	10.750	16.0	706325
12"	200	15.50	12.750	16.0	706806
14"	160	20.25	14.000	18.0	706349
16"	200	25.00	16.000	18.0	706356

CERTA-LOK NIPPLE C/L MALE x MIPT					
Size (in.)	PSI	WT./PC (lbs.)	OD (in.)	L (in.)	Part No.
2"	200	0.60	2.375	7.00	705991
3"	190	1.30	3.500	9.00	706004
4"	160	2.40	4.500	10.00	706011
6"	140	5.20	6.625	12.00	706028
8"	120	9.00	8.625	13.00	706035

