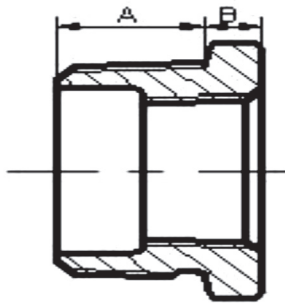


# Malleable Iron Fittings

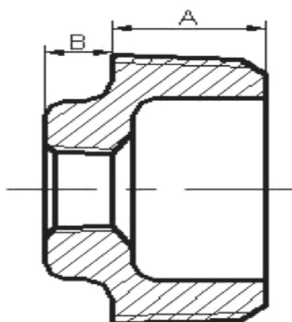
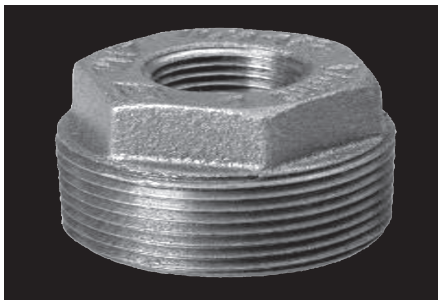
## Bushing - Outside Head



Size (in.)	Part Number	
	Black	Galv
1/4X1/8	IBBBA	IGBBA
3/8X1/8	IBBCA	IGBCA
3/8X1/4	IBBCB	IGBCB
1/2X3/8	IBBDC	IGBDC
1/2X1/8	IBBDA	IGBDA
1/2X1/4	IBBDB	IGBDB
3/4X3/8	IBBFC	IGBFC
3/4X1/2	IBBFD	IGBFD
3/4X1/8	IBBFA	IGBFA
3/4X1/4	IBBFB	IGBFB
1X1/2	IBBGD	IGBGD
1X3/4	IBBGF	IGBGF

Size (in.)	Part Number	
	Black	Galv
1-1/4X3/4	IBBHF	IGBHF
1-1/4X1	IBBHG	IGBHG
1-1/2X1	IBBJG	IGBJG
1-1/2X1-1/4	IBBJH	IGBJH
2X1-1/4	IBBKH	IGBKH
2X1-1/2	IBBKJ	IGBKJ
2-1/2X1-1/2	IBBLJ	IGBLJ
2-1/2X2	IBBLK	IGBLK
3X2	IBBMK	IGBMK
3X2-1/2	IBBML	IGBML
4X3	IBBPM	IGBPM
5X4	IBBSP	

## Bushing - Inside Head



Size (in.)	Part Number	
	Black	Galv
1X1/8	IBBGA	
1X1/4	IBBIB	IGBIB
1X3/8	IBBGC	IGBGC
1-1/4X1/4	IBBHB	IGBHB
1-1/4X3/8	IBBHC	
1-1/4X1/2	IBBHD	IGBHD
1-1/2X1/4	IBBJB	
1-1/2X3/8	IBBJC	
1-1/2X1/2	IBBJD	IGBJD
1-1/2X3/4	IBBJF	IGBJF
2X3/8	IBBKC	IGBKC
2X1/2	IBBKD	IGBKD
2X3/4	IBBKF	IGBKF
2X1	IBBKG	IGBKG

Size (in.)	Part Number	
	Black	Galv
2X1/4	IBBKB	
2-1/2X3/4	IBBLF	IGBLF
2-1/2X1	IBBLG	IGBLG
2-1/2X1-1/4	IBBLH	IGBLH
3X3/4	IBBMF	
3X1	IBBMG	IGBMG
3X1-1/4	IBBMH	
3X1-1/2	IBBMJ	IGBMJ
4X1-1/2	IBBPJ	IGBPJ
4X2	IBBPK	IGBPK
4X2-1/2	IBBPL	IGBPL
6X4	IBBUP	IGBUP
6X3	IBBUM	