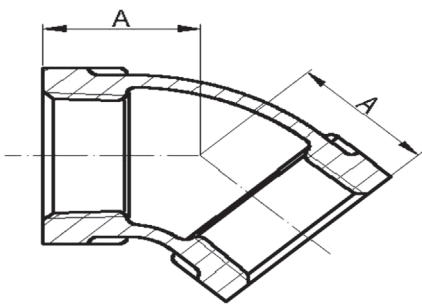


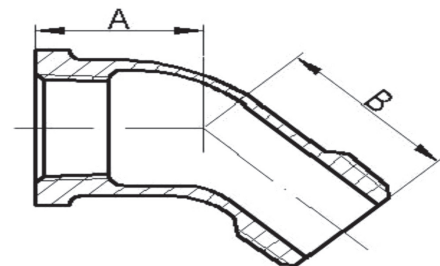
Malleable Iron Fittings

45° Elbow



Size (in.)	Part Number		A in Inches
	Black	Galv	
1/8	IB4A	IG4A	0.6
1/4	IB4B	IG4B	0.73
3/8	IB4C	IG4C	0.80
1/2	IB4D	IG4D	0.88
3/4	IB4F	IG4F	0.98
1	IB4G	IG4G	1.12
1-1/4	IB4H	IG4H	1.29
1-1/2	IB4J	IG4J	1.43
2	IB4K	IG4K	1.68
2-1/2	IB4L	IG4L	1.95
3	IB4M	IG4M	2.17
4	IB4P	IG4P	3.05
6	IB4U		3.46

45° Street Elbow



Size (in.)	Part Number		A in Inches	B in Inches
	Black	Galv		
1/8	IBS4A	IGS4A	0.65	0.85
1/4	IBS4B	IGS4B	0.73	0.94
3/8	IBS4C	IGS4C	0.80	1.03
1/2	IBS4D	IGS4D	0.88	1.15
3/4	IBS4F	IGS4F	0.98	1.29
1	IBS4G	IGS4G	1.12	1.47
1-1/4	IBS4H	IGS4H	1.29	1.71
1-1/2	IBS4J	IGS4J	1.43	1.88
2	IBS4K	IGS4K	1.68	2.22
2-1/2	IBS4L		1.95	2.57