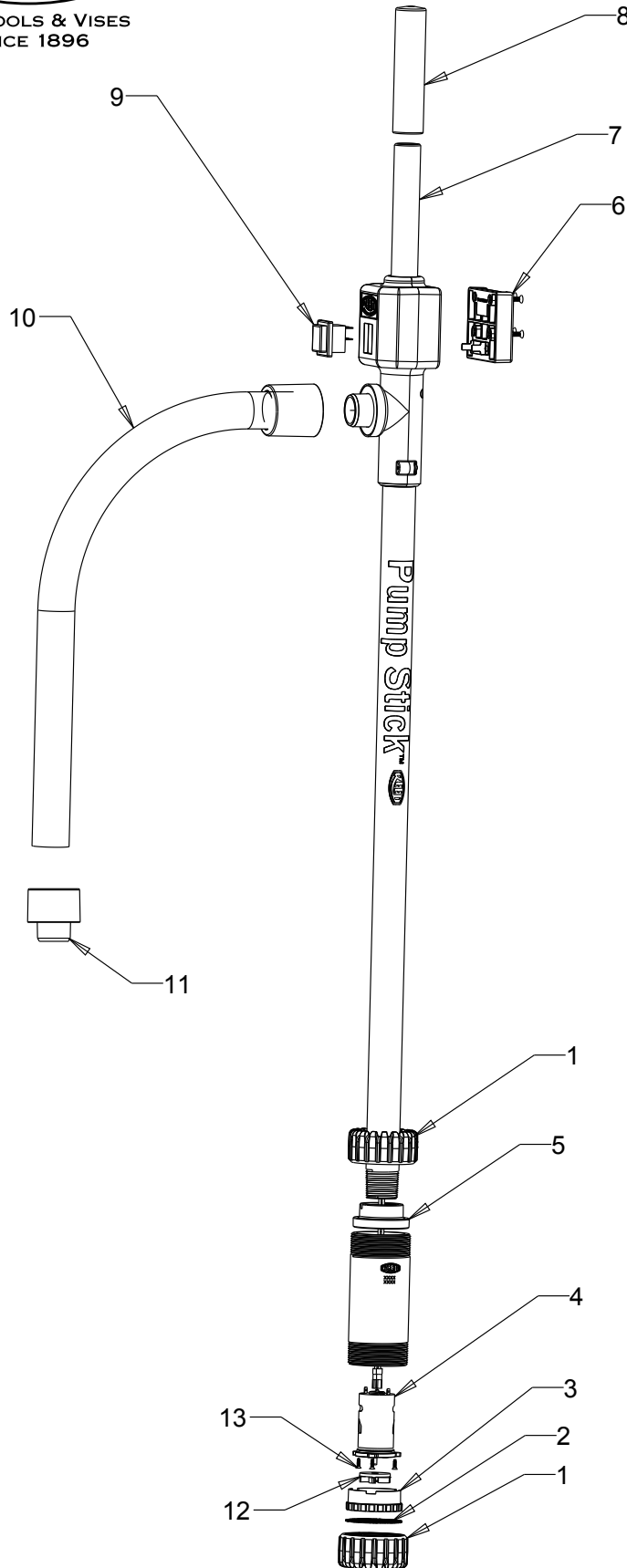




PIPE TOOLS & VISES
SINCE 1896

Pump Stick™ Cordless Power Water Pump

Replacement Parts



Parts List

| Ref. No. | Part Number | Description |
|----------|-------------|------------------------------|
| 1 | 48106 | END CAP (2) |
| 2 | 98166 | STANDARD MEDIUM SCREEN |
| | 98167* | FINE SCREEN |
| | 98168* | FELT FILTER 100 MICRON |
| | 98188* | MARINE STRAINER |
| | 98189* | RECESSED CENTER STRAINER |
| 3 | 48109 | SPACER |
| 4 | 08142 | CP15 MOTOR ASSEMBLY** |
| 5 | 48105 | UNION |
| 6 | 98139 | STANDARD BOSCH ADAPTER PLATE |
| | 98140* | DEWALT ADAPTER PLATE |
| | 98141* | MILWAUKEE ADAPTER PLATE |
| | 98149* | MAKITA ADAPTER PLATE |
| 7 | 98132 | STANDARD HANDLE 6 INCH |
| | 98184* | HANDLE 24 INCH W/GRIP |
| 8 | 40095 | HANDLE GRIP |
| 9 | 48118 | SWITCH |
| 10 | 98143 | STANDARD HOSE ASSEMBLY 2FT |
| | 98144* | HOSE ASSEMBLY 4FT |
| | 98145* | HOSE ASSEMBLY 7FT |
| 11 | 98147* | HOSE COUPLING |
| 12 | 48108 | IMPELLER |
| 13 | 48127 | MOTOR MOUNTING SCREWS (3) |

* Optional Parts

** Motor Assembly includes motor, motor mount (with screws), and impeller.