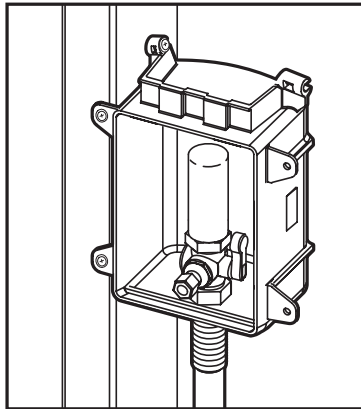


Fire-rated OxBox™

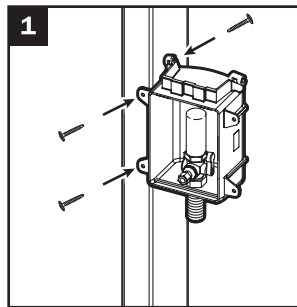
Ice Maker Outlet Box

Installation on Stud | Instalación en Montante de Madera | Installation au Montant

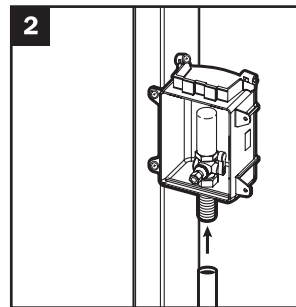


Conforms to ASTM E-814
 - 2 hrs. (F) , 1.5 hrs. (T)
 Conforms to ASTM E-119
 Package includes factory-installed
 intumescent pads.

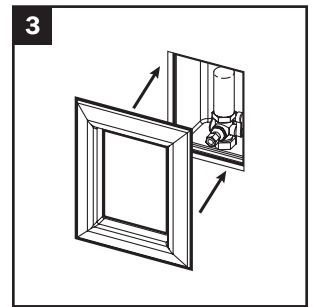
Ajuste a ASTM E-814
 - 2 hrs. (F) , 1.5 hrs. (T)
 Ajuste a ASTM E-119
 El paquete incluye almohadilla intumescentes instaladas por la fabrica.



1
 Secure assembly to stud
 Asegure la asamblea al puntal
 Fixer l'assemblage au montant

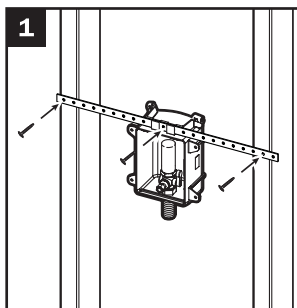


2
 Connect supply line according to industry standards. Open valves before any soldering
 Conecte línea de alimentación de acuerdo a los estándares de industria. Abra la válvula antes de soldar
 Raccorder le conduite d'alimentation selon les normes de l'industrie. Ouvrir le robinet avant toute soudure

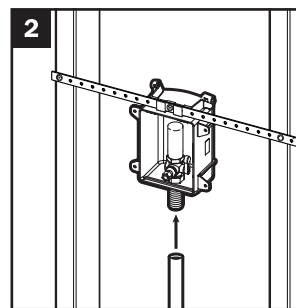


3
 Install frame after wall finish
 Instale marco después de acabado de pared
 Installer le cadre après la finition du mur

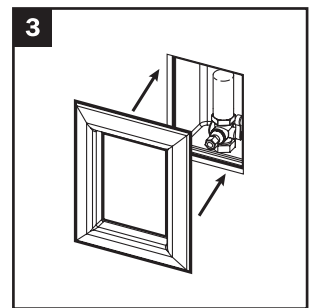
Installation Between Studs | Instalación Entre de los Maderas | Installation Entre les Montants



1
 Slide bracket into top track and secure bracket to studs
 Deslice soporte hacia riel de arriba y asegure la soporte a los maderas
 Faites glisser le support dans la partie supérieure et fixer l'assemblage au montant

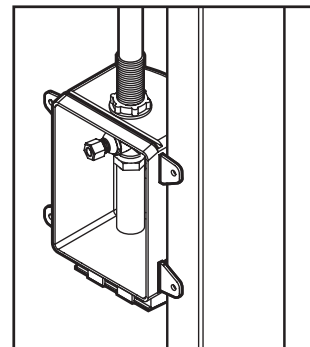
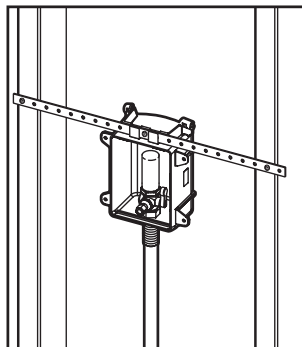
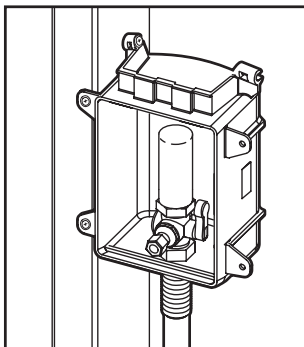


2
 Connect supply line according to industry standards. Open valves before any soldering
 Conecte línea de alimentación de acuerdo a los estándares de industria. Abra la válvula antes de soldar
 Raccorder le conduite d'alimentation selon les normes de l'industrie. Ouvrir le robinet avant toute soudure



3
 Install frame after wall finish
 Instale marco después de acabado de pared
 Installer le cadre après la finition du mur

Multiple Installation Options | Opciones Múltiples de Instalación | Plusieurs options d'installation



Supply

Drainage

Support

www.siouxchief.com

TAKE THE FIELD.



Fire-rated OxBox™

Design Specification

1. WALL CONSTRUCTION

- Wood or metal stud construction, max 100 in.² of penetrations per 100 ft² of wall.
- 16" or 24" on-center stud construction.
- Can be installed with a gap between front and back wall assemblies (UL Design # U341) (Figure 2).
- Single-layer 5/8" gypsum construction with 1-hour fire rating.
- Double-layer 5/8" gypsum construction with 2-hour fire rating. Frame extensions can be used.
- Boxes cannot be installed back to back.

2. PIPE/BOX SUPPORT

- Each outlet box shall be installed in a separate stud bay and attached to the stud (Figure 3 & 4). Fire rating does not apply to installations of two or more boxes in the same stud bay.
- Supplied support bar.
- Supply lines to be installed using ordinary methods.
- Drain line to be supported using ordinary methods.

3. PIPE MATERIAL

- 2" or larger metallic, PVC, or ABS DWV pipe.
- Metallic or plastic water supply pipe.

4. FIRESTOP DEVICE

Sioux Chief fire-rated OxBox uses fire-rated resin. Boxes have 4" x 4" intumescent adhesive pads factory installed on the back of boxes.

NOTE: Gaps up to 1/2" around box can be sealed with drywall plaster. Larger gaps require firestop sealant applied to opening spanning entire drywall depth

"over stud" installation

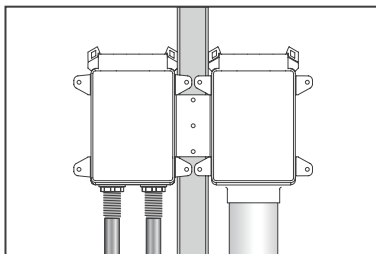


FIGURE 3

"separate stud bay" installation

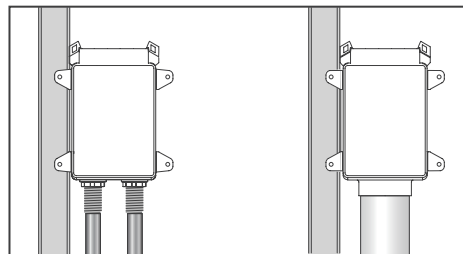


FIGURE 4

THE FIRE-RATED OXBOX IS CERTIFIED BY INTERTEK/WARNOCK HERSEY TO THE FOLLOWING FIRE RATING STANDARDS:

ASTM E-814

2 hours (F), 1½" hours (T)
for 2-hour design
1 hour (F), 31 mins (T)
for 1-hour design

ASTM E119

CAN/ULC S115

2 hours (F), 1½" hours (T)
for 2-hour design
1 hour (F), 31 mins (T)
for 1-hour design

UL 1479



FIGURE 1

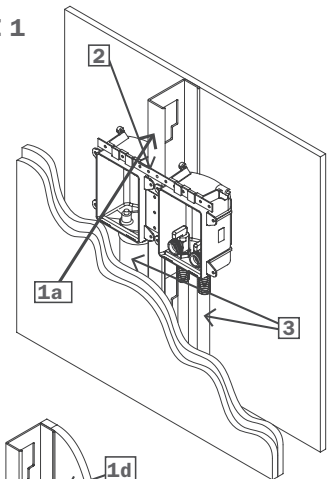
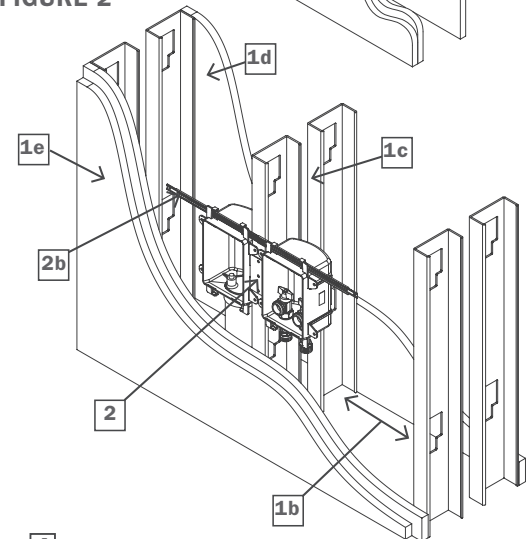


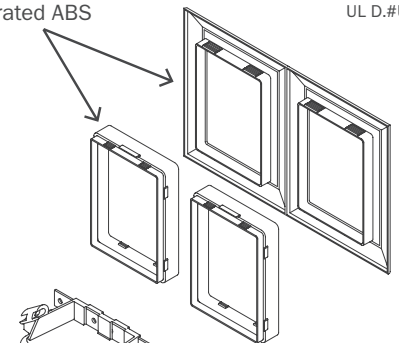
FIGURE 2



4

Fire-rated ABS

UL D.#U341



Intumescent pads

Patent 7,360,553 and 7,735,551

Supply

Drainage

Support

www.siouxchief.com

14940 Thunderbird Road
Kansas City, Missouri 64147
P 1.800.821.3944
F 1.800.758.5950

