

Installation Instructions

» 821 Series Shower Pan Drain

Before installation, the subfloor MUST be properly prepared for the installation, meet local code requirements, and Tile Council of North America (TCNA) guidelines.

Determine the location of the drain. For a wood subfloor installation cut a 4" diameter hole where the drain body will be positioned. Disassemble the shower drain. Secure the shower drain base in the opening so that the flange is supported by the subfloor. Be sure the drain base is level and any fasteners used will not damage the waterproof pan liner. Solvent weld the drain pipe into the drain base using the appropriate solvent cement.

A preformed sloped base material can be used in place of a primary mortar bed. If a pre-sloped base is used, be sure to follow manufacturer's instructions for installation. If installing a primary mortar bed, cover the drain base to protect it from mortar/debris. Apply primary mortar bed over the subfloor at 1/4" per foot slope from the wall framing down to the top edge, but not over the flange of the drain base. The sloped mortar bed should be flush with the top of the drain base as shown. Take care not to damage the surface of the drain base. Remove mortar and do not let any mortar harden in any area on the surface of the drain base.

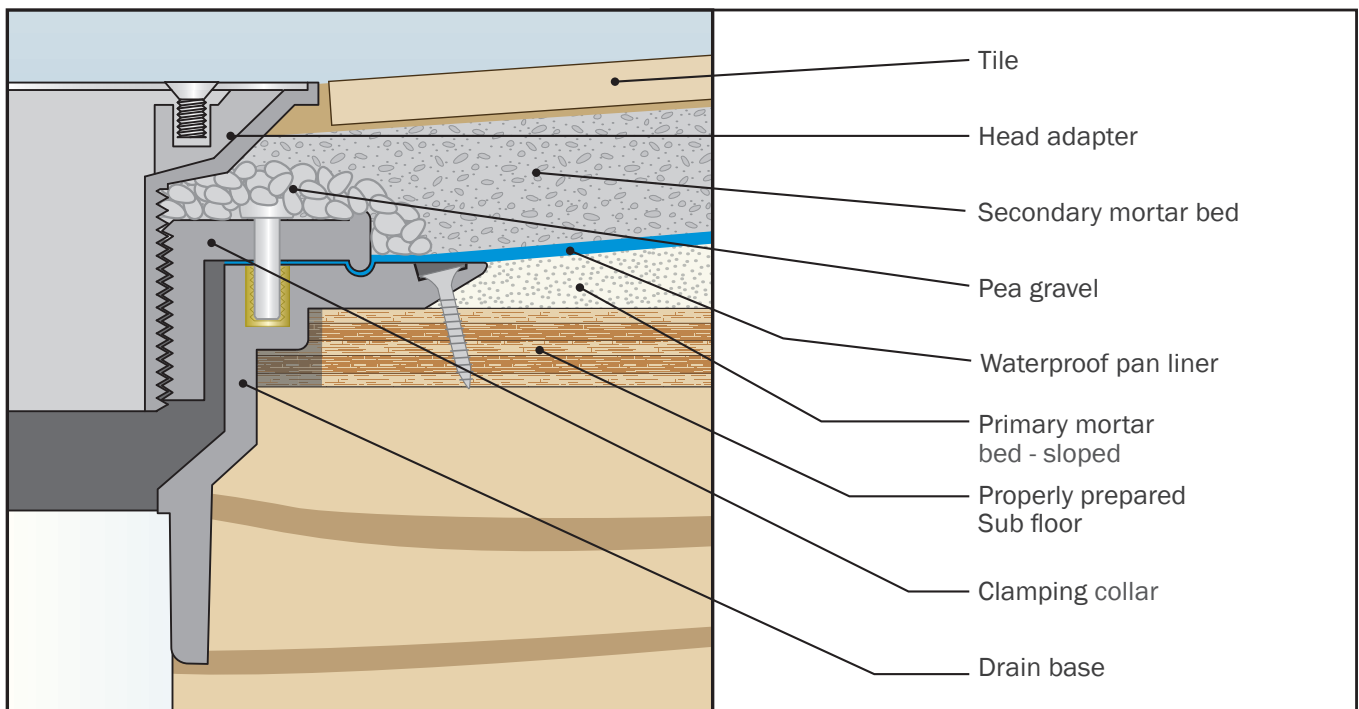
When the primary mortar bed has cured, remove the cover from the drain base and be sure the top surface is clean and free of debris. Install the waterproof pan liner in the shower area according to the pan liner manufacturer's recommendations and local plumbing code.

Carefully cut an opening in the pan liner that matches the size and position of the opening in the drain base. Carefully cut closely around the four bolt holes on the drain base to allow for insertion of the bolts. DO NOT cut close to the groove in the top of the drain base. Screw the four collar bolts into the bolt holes approximately 2-3 threads deep. Install clamping collar, turning to lock under the four bolt heads. Note: The clamping collar can be inverted if additional height is needed for the drain head. Make sure the waterproof pan liner makes clean, even contact with the drain body and clamping collar. The clamping collar and flange are designed to work together to form the seal with the pan liner - no adhesive is necessary. Tighten the four clamping collar bolts.

Finish installing pan liner according to manufacturer's recommendations. Perform a flood test of the pan liner according to plumbing codes and TCNA guidelines. The DoubleDuty™ Test Plug can be used to seal the drain body during this test. Make sure the drain is connected to the plumbing system. After a successful flood test, drain the water from the shower pan.

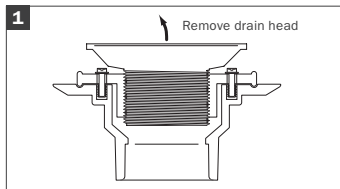
Screw the head adapter (includes the strainer) of the drain into the clamping collar to the desired height. NOTE: Consider the thickness of the floor tile, and set height of the head adapter so there will be at least 3/4" of mortar around the head adapter per TCNA guidelines. Before installing the secondary mortar bed, place some pea gravel over clamping collar to prevent weep holes from clogging.

After the secondary mortar bed has set, proceed with installation of shower floor tile.



»» DoubleDuty™ Test Plug Installation

To Perform DWV Pressure Test:

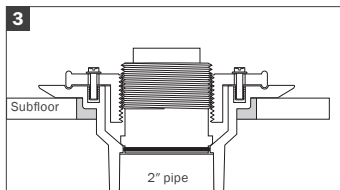


1. Unscrew and remove drain head. Keep head for later installation.

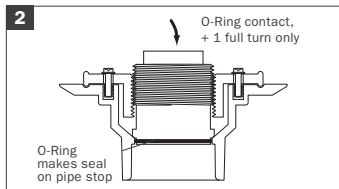
Note: Be sure to check with and follow all local plumbing codes during installation and testing of drain.

Lubricate O-Ring

Use silicone stem lube, lip balm, liquid soap, etc.

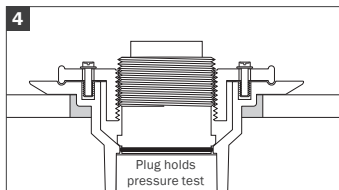


3. Set drain body to subfloor and solvent weld to drain piping per typical installation procedures.



2. Align lugs on test plug (just above O-Ring) with slots in clamping collar. Push plug through collar.

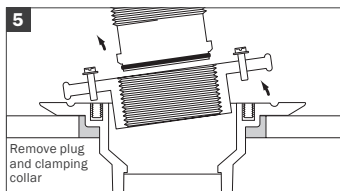
Thread plug into collar until O-Ring contacts pipe stop, Then give 1 Full turn only. Do not over-tighten.



4. Perform DWV pressure test. Plug can remain in place, to prevent loss or damage to drain head and to keep debris out of the drain line.

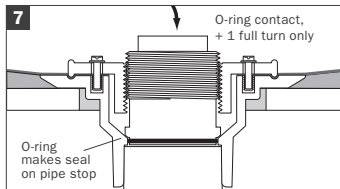
»» DoubleDuty™ Test Plug Installation

To Perform Shower Pan Test:



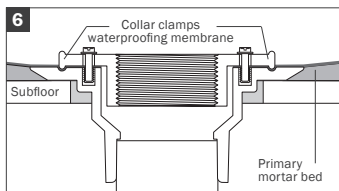
5. Remove test plug from collar and remove clamping collar and bolts.

Note: Be sure to check with and follow all local plumbing codes during installation and testing of drain.



7. Align lugs on test plug (just above O-Ring) with slots in clamping collar. Push plug through collar.

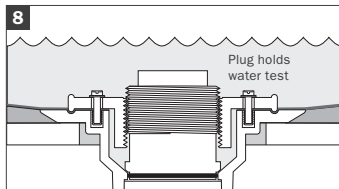
Thread plug into collar until O-Ring contacts pipe stop, then give 1 full turn only. Do not over-tighten.



6. Install waterproofing membrane under clamping collar per typical installation procedures.

Lubricate O-Ring

Use silicone stem lube, lip balm, liquid soap, etc.



8. Fill shower pan and perform shower pan test. When test is complete, replace test plug with drain head or plug can remain in place until tile installation.

14940 Thunderbird Road
Kansas City, Missouri 64147
P 1.800.821.3944
F 1.800.758.5950

#IS-821-TP DOUBLEDUTY INSTRUCTION SHEET - 7/17