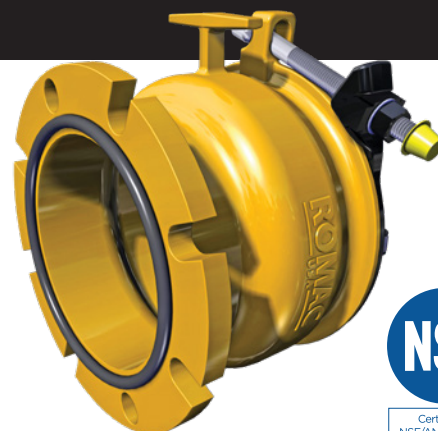


# ALPHA™ RESTRAINED JOINT RESTRAINED FLANGED COUPLING

## SUBMITTAL INFORMATION



## USE

Provides a Restrained Joint for multi-purpose use from IPS PVC through Cast iron to flanged fittings. The ALPHA FC can accommodate up to 4 degrees of deflection. The XL may have limited deflection at the top of the range (2 degrees max.).

## FLANGE

Compatible with ANSI Class 125 and 150 bolt circles.

## MATERIALS

### CASTINGS

All cast components (end rings, center ring, and bolt guides) are ductile iron, meeting or exceeding the requirements of ASTM A 536, grade 65-45-12.

### GRIPPERS

Ductile (nodular) iron, meeting or exceeding ASTM A 536, Grade 65-45-12. Machine sharpened and heat treated. Xylan 1424 coated for superior corrosion resistance.

### GASKETS

SBR compounded for water and sewer service per ASTM D2000, classified by UL to meet NSF61 or NBR compounded for water and sewer service per ASTM D2000, NSF61 Certified. O-Ring style flange gasket is NBR in accordance with ASTM D2000, NSF61 Certified. Other compounds available upon request.

### DRAW HOOKS

Uncoated 304 stainless steel.

### RAMP RUNNERS

Nylon 66, Black, 14% Glass filled

### BOLTS AND NUTS

5/8-11 bolts with heavy hex nuts. E-coated nuts, 304 stainless steel. Fasteners provided with anti-galling protection. 316 stainless steel available by request.

### COATINGS

Flanged coupling body is Romacote fusion bonded epoxy, NSF 61 Certified. End rings are Romabond polyester.

## PRESSURE

When properly installed, the Romac ALPHA coupling can be used at a working pressures equal to the rating of the installed pipe up to 350 psi.

## PIPE MATERIALS

The Romac ALPHA series couplings can be used on DI, Oversized Cast Iron, PVC (IPS, C900, C909), and HDPE (SDRs 9, 11, 13.5 and 17). Stiffener not required.

## SIZES & RANGES

See catalog.

*This information is based on the best data available at the date printed above. Please check with Romac for any updates or changes.*

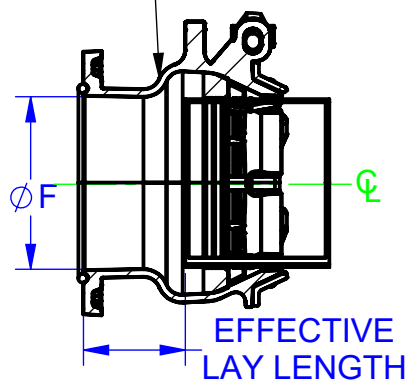


www.romac.com  
21919 20th Avenue SE • Suite 100 • Bothell, WA 98021  
Phone (425) 951-6200 • 1-800-426-9341 • Fax (425) 951-6201

SIZE	PIPE OD RANGE	BODY OD	HEIGHT	LENGTH	FLANGE OD	FLANGE THICKNESS	FLANGE ID	MAX DEFLECTION (DEGREES)	WEIGHT (LBS)	EFFECTIVE LAY LENGTH
		ØA	B	C	ØD	E	ØF			
4	4.50-4.90	7.84	10.13	8.38	10.13	0.75	5.19	4	29	4.17
6	6.60-7.00	9.88	12.22	8.46	12.22	0.75	7.26	4	40	4.26
8	8.60-9.10	13.32	14.81	10.14	14.81	0.75	9.29	4	57	3.97
10	10.75-11.20	15.44	17.15	10.37	17.15	0.75	11.54	4	82	4.20
12	12.75-13.30	17.49	19.68	10.87	19.68	0.81	13.69	4	105	4.70

REVISIONS				
REV.	DESCRIPTION	SHEET #	DATE	EDITOR
R0	INITIAL RELEASE	1	7/8/19	TM

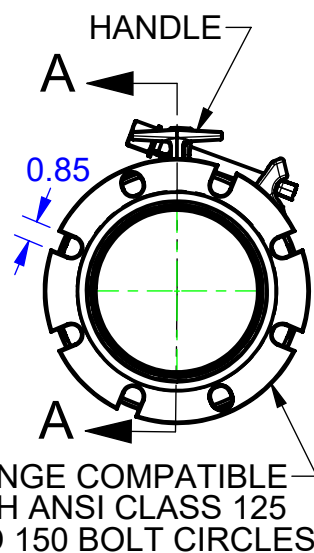
BODY, NSF 61  
FUSION BONDED  
EPOXY



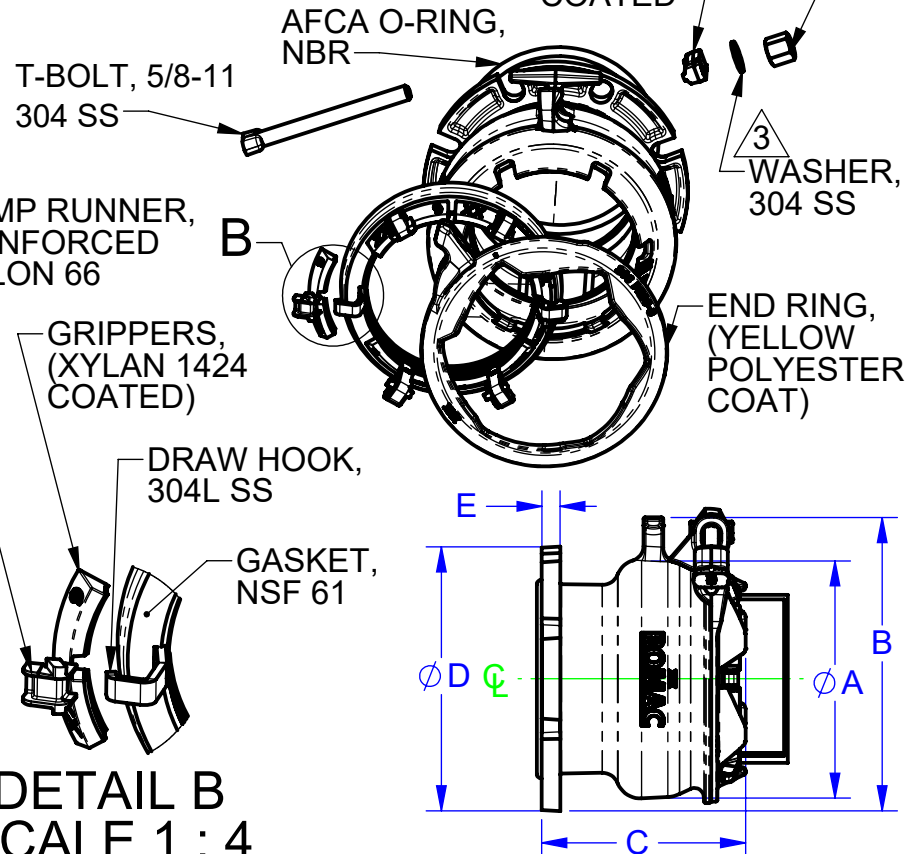
## SECTION A-A

### NOTES:

1. ALL MATERIALS ASTM A536 GRADE 65-45-12 DUCTILE IRON UNLESS OTHERWISE SPECIFIED
2. GASKET MATERIAL: NSF 61 SBR PER ASTM D2000 OR NSF NBR UPON REQUEST
3. FASTENER MATERIAL: TYPE 304 STAINLESS STEEL, 316 AVAILABLE UPON REQUEST
4. BOLT GUIDE COATED BLACK XYLAN 1212. E-COAT UPON REQUEST
5. 4-12 SIZES PRESSURE RATING IS 350 PSI



FLANGE COMPATIBLE  
WITH ANSI CLASS 125  
AND 150 BOLT CIRCLES



## DETAIL B SCALE 1 : 4

### PROPRIETARY NOTICE

THIS DRAWING CONTAINS CONFIDENTIAL PROPRIETARY INFORMATION AND IS THE PROPERTY OF ROMAC IND., INC. IT IS TO BE USED ONLY FOR THE PURPOSE FOR WHICH IT WAS SUBMITTED AND SHALL NOT HAVE ITS INFORMATION DISCLOSED OR REPRODUCED IN WHOLE OR IN PART FOR ANY PURPOSE WITHOUT PRIOR WRITTEN PERMISSION OF ROMAC IND., INC.

### UNLESS OTHERWISE SPECIFIED

- DIMENSIONS ARE IN INCHES
- DRAWING NOT PERFECTLY TO SCALE
- DIMENSIONS IN ( ) ARE FOR REFERENCE ONLY

### SIGNATURES

DRAWN  
Tyler Matthews

APPROVED  
James Protzeller

### DATE

7/8/2019

7/12/2019



ROMAC INDUSTRIES INC.

TITLE  
ALPHA  
FLANGE COUPLING ADAPTER, 4-12 INCH,  
STANDARD

DWG. NO.

CAD-045789

SIZE  
A

REV. NO.  
R0

SCALE  
1:8

SHEET  
1 OF 1

MODEL NAME: ALPHA, FLANGE COUPLING ADAPTER, ASSEMBLY, 4 INCH, STD  
MODEL CAD #: CAD-045791

CONFIGURATION NAME: Default

THIRD ANGLE  
PROJECTION



LEGACY DRAWING #:  
DRAWING FILE NAME:  
ALPHA, FLANGE COUPLING ADAPTER, 4-12 INCH, STANDARD

AUTHOR: Tyler Matthews