

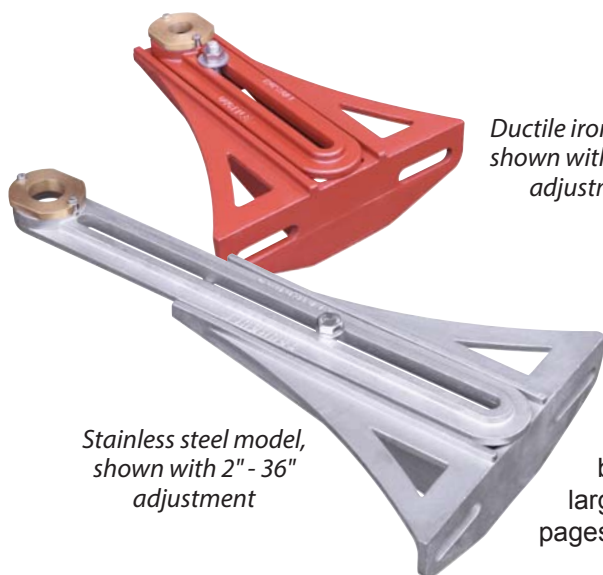
## Adjustable Stem Guides

Ductile Iron or Stainless Steel

**TRUMBULL STEM GUIDES** are designed for installation in treatment plants and pump stations to provide support for valve extension stems. These Stem Guides are adjustable for stems as close to the wall as 2", or as far away as either 26", 36" or 48". All ductile iron castings coated with Themec N140-1211 epoxy (complies with NSF 61). See reverse side for drawing.

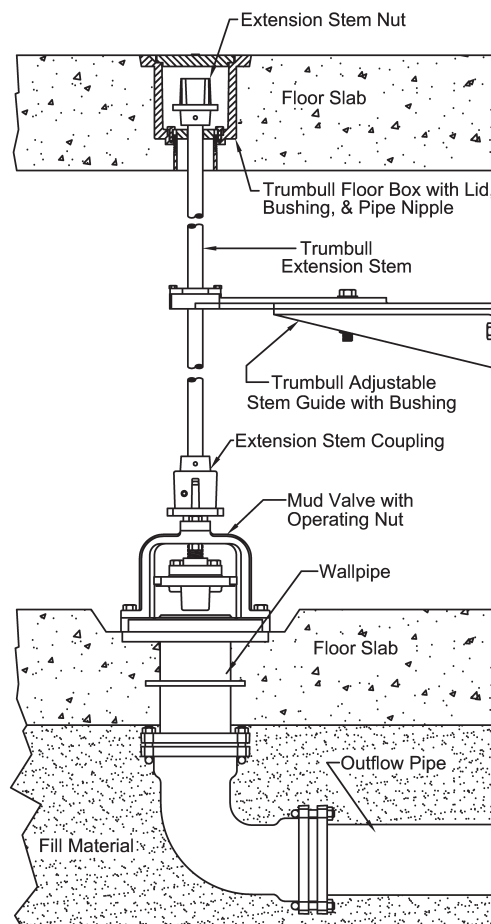
| Adjustment Range | Ductile Iron      |            | 316 Stainless Steel |            |
|------------------|-------------------|------------|---------------------|------------|
|                  | Trumbull Item No. | Weight     | Trumbull Item No.   | Weight     |
| 2" to 26"        | <b>367-4960</b>   | 24.35 lbs. | <b>367-5960</b>     | 24.80 lbs. |
| 2" to 36"        | <b>367-4970</b>   | 27.90 lbs. | <b>367-5970</b>     | 28.70 lbs. |
| 36" to 48"       | <b>367-4974*</b>  | 38.00 lbs. | <b>367-5974*</b>    | 37.00 lbs. |

\* Adjustable arm for 36" to 48" range will be fabricated. Stem Guides for stems up to 72" away from wall can be fabricated from either carbon steel or stainless steel, please inquire.



Ductile iron model, shown with 2" - 26" adjustment

Stainless steel model, shown with 2" - 36" adjustment



Typical Stem Guide installation

Stem Guides are generally recommended at 6' to 8' intervals. Bronze bushings can be drilled up to a 2-1/8" bore diameter for 2" O.D. stems. By removing the bushing larger stems can be accommodated, up to 2-3/8" O.D. See pages G-19 and G-20 for Stem Guides for larger diameter stems.

### Ordering Instructions

1. Quantity required
2. Provide the Trumbull item number for the model you require (shown above)
3. O.D. of stem being used, or desired bushing material (see note on right) & hole size

Bushings are also available in:

- No-lead brass, per C89833
- Ultra High Molecular Weight Polyethylene (UHMWPE)
- NSF 61 approved polymer (Ryton® R-4)